



269 E. CONCORD FARM LANE
DRAPER, UTAH



CONCORD
LANE

LOT 4 | PUTNAM



5 Bedrooms



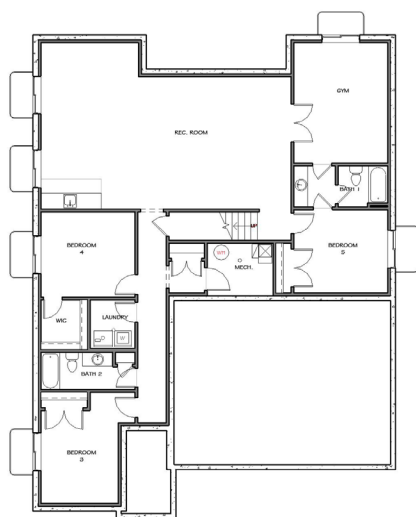
4 Bathroom



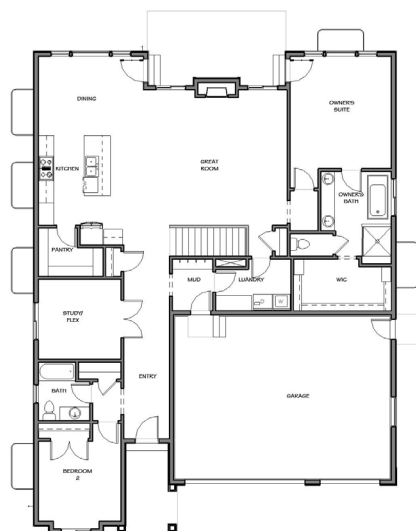
3 Car Garage



3818 SF Total



Basement



Main Floor

EXTERIOR COLOR PACKAGE



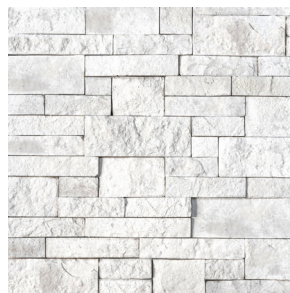
ROOFING

Owens Corning:
Black Walnut



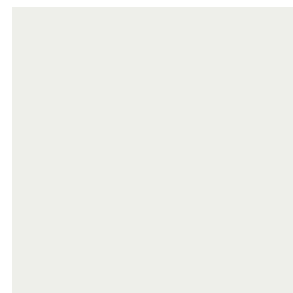
SOFFIT/FASCIA

Ply Gem Mastic:
Dark Bronze



STONE COLOR

HARRISTONE
White Sand Divino
ledge dry stack



STUCCO COLOR

SW7006:
Extra White



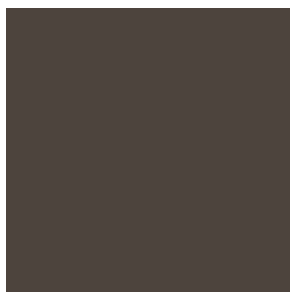
LAP SIDING, BOARD & BATTEN COLOR

SW6208:
Pewter Green



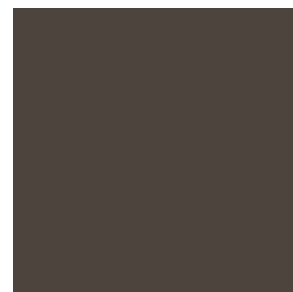
FRONT DOOR

SW7048:
Urbane Bronze



RAIN GUTTERS

Dark Bronze



GARAGE DOOR COLOR

Flat Panel:
Dark Bronze

For details on the interior package, please request an Interior Package booklet from the agents.

The information provided is for illustrative purposes only and may not be exact. All prices, materials, measurements, images, and renderings are subject to change without notice.

primed^{RE}
REAL ESTATE

134 W. 13100 S., Suite 200
Draper, Utah 84020

www.primedre.com

Call our preferred lender for details on incentives,
rate, and borrower specific qualifications.
Jordan Duckett: (801) 636-9069 with Security National Mortgage.



SANDY EWING

ASSOCIATE BROKER/
SALES CONSULTANT

(801) 652-4424
sandyewing@primedre.com



DESI EDDY

NEW HOME
SALES CONSULTANT

(801) 574-9050
desieddy@primedre.com