

Belmont



Prairie



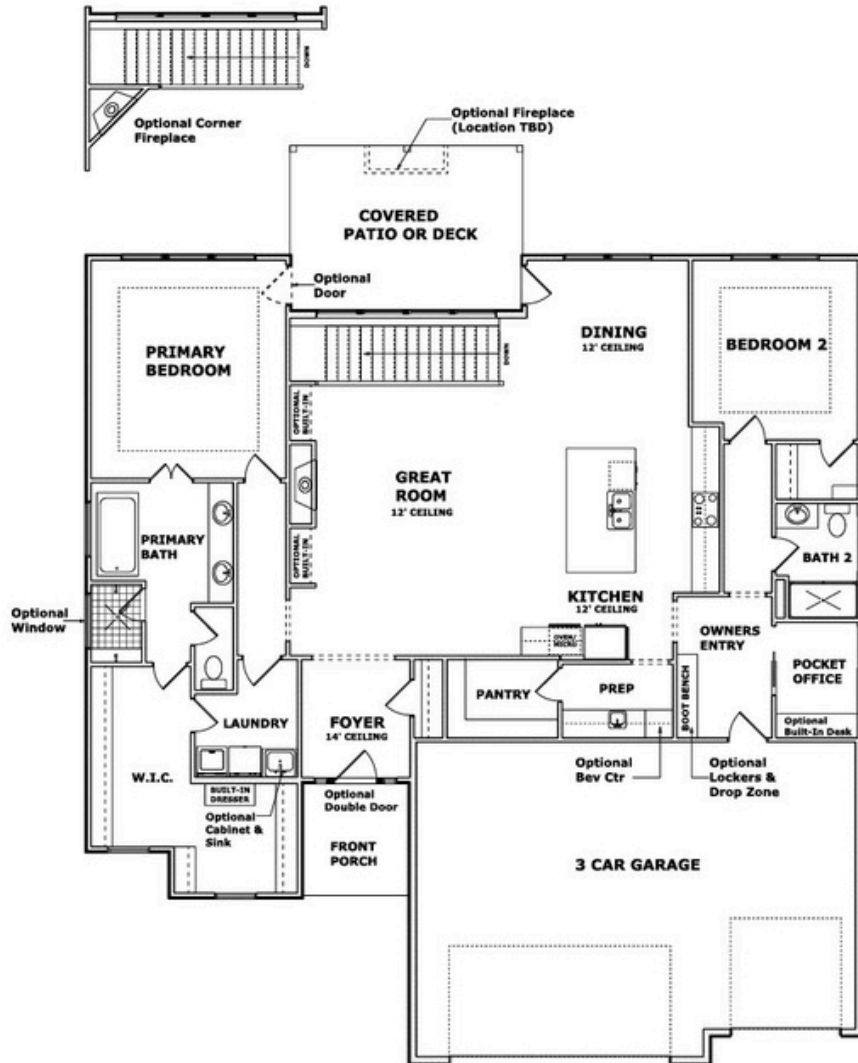
Modern Euro



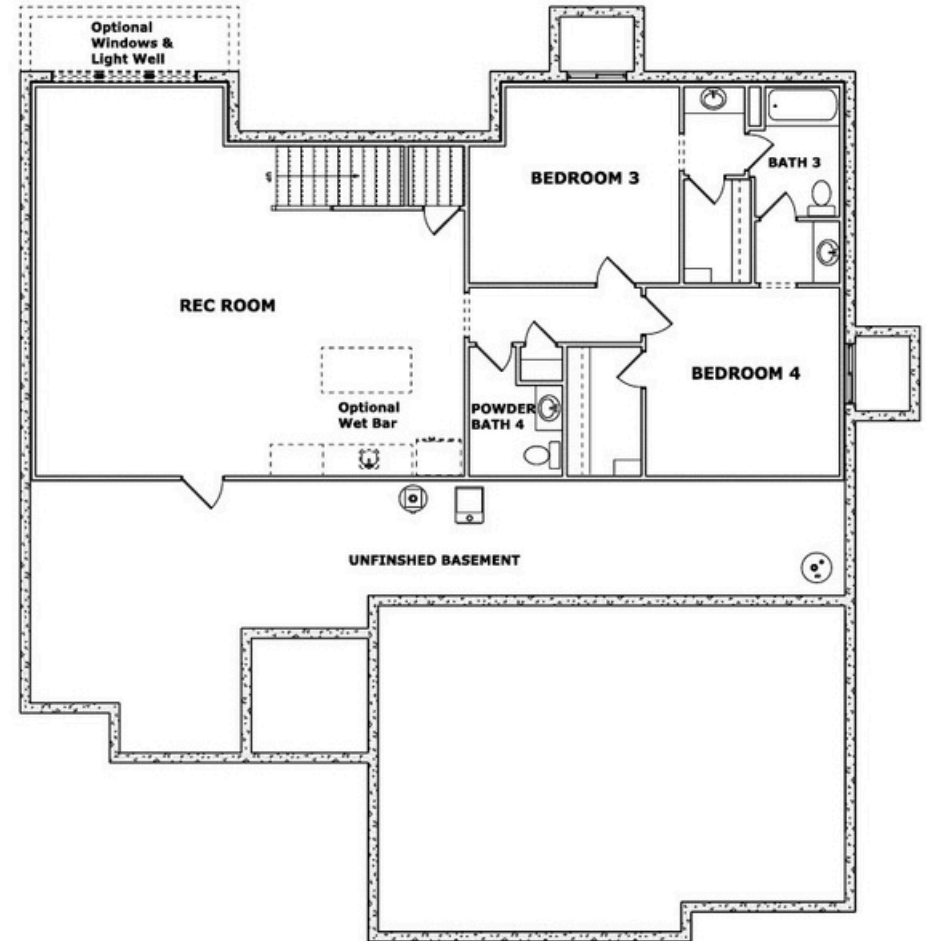
Contemporary

Belmont

MAIN LEVEL

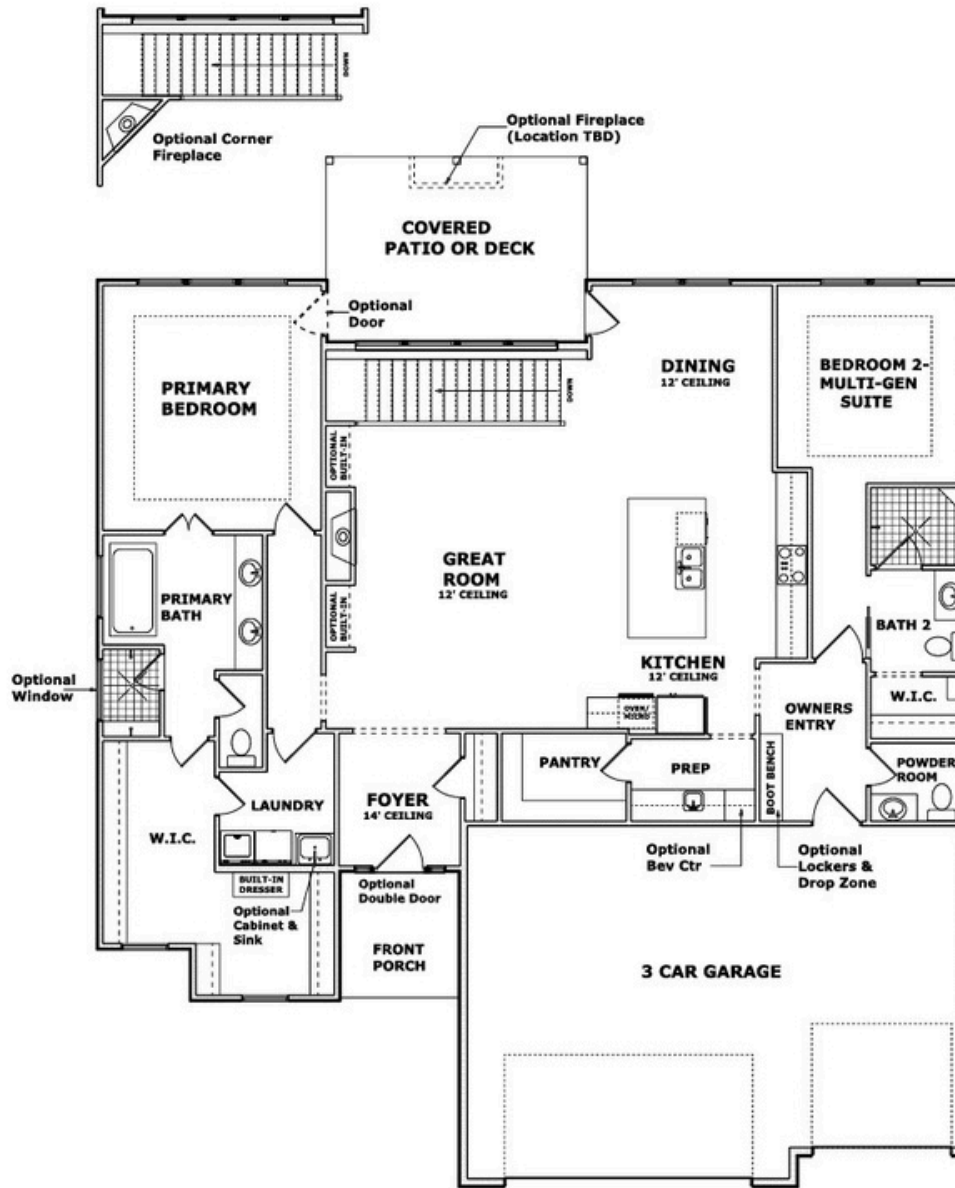


LOWER LEVEL



Belmont

MAIN LEVEL (Option 2)
Multi-Gen Suite



Belmont

includes the following:

STANDARD FEATURES

INTERIOR FEATURES

- 8' "Level 1" interior doors (main floor)
- Boot bench with open cubbies and hooks
- Wide plank premium laminate flooring on main level traffic areas
- Gas fireplace with blower and battery back-up
- Approx. 10' ceilings on first floor (12' in Great Room)
- Quartz countertops
- Tray ceiling in foyer, dining, primary bedroom, and bedroom 2
- TV HDMI chase at fireplace
- Built-in dresser and pull-down rods in primary closet
- Two shower heads in primary bathroom shower
- Face framed pantry and primary closet
- Wood trimmed mirror frames in primary bathroom and bath 2
- Tiled primary bath floor and shower
- Tile floors in all bathrooms
- Wood shelving in all closets & pantry
- Ceiling fans in great room and primary bedroom
- Ceiling fan pre-wire and switch in all bedrooms
- Laundry room upper cabinet & hanging rod
- High traffic stair carpet
- 8 lb. carpet pad
- Sherwin-Williams® interior/exterior paint
- Straight black iron spindles on staircase
- Plumbing stub for future wet bar
- CAT 6 outlet at GR Fireplace, Primary Bedroom, Finished LL Rec Room
- Approx. 9' basement walls

KITCHEN

- Built-in GE® stainless steel appliances:
 - Gas cooktop, built-in oven and microwave, upgraded dishwasher with SS interior
- Custom site-finished wood cabinetry with soft close drawers/doors
- Choice of enameled or stained cabinetry
- Under cabinet LED lighting with switch
- Tile backsplash
- Trash/recycle pull-out with bins
- Composite undermount sink
- Oversized island
- USB outlet

EXTERIOR FEATURES

- 8' tall entry door
- 3 car garage - Painted SW Pure White with base trim
- 8' tall garage doors (non-insulated)
- Wi-Fi enabled garage door openers with (1) keypad
- Fully sodded yard with front landscaping
- Irrigation system with shrub zone
- Recessed soffit lighting
- Covered rear patio with fan & light
- 8' Tall Sliding Glass Door - Walkout Lots

ENERGY EFFICIENCY

- 95% high efficiency gas furnace
- 13.4 SEER2 air conditioner
- Programmable thermostat
- Pella® vinyl Low-E thermal windows
- Passive radon mitigation system
- LED light bulbs throughout
- Whole house humidifier

WARRANTY

Your new home will be enrolled in the 2-10 Home Buyers Warranty, a nationwide program. This includes:

- 1 Year workmanship
- 2 Year systems
- 10 Year structural



BE INSPIRED. BUILD INSPIRED. LIVE INSPIRED.

**Standard Features are subject to change without notice and could vary by floor plan, lot, and community.