

# 6814 Cork Drive

**TODD**  
Homes  
llc.com  
Affordable Luxury

WEST RIDGE | WEST CHESTER, OHIO



## THE WILSHIRE FEATURES:



Introducing a stunning Custom Craftsman spanning 3683 SF, featuring 5BR's & 4.5BA's! Step inside to discover an open-concept layout, enhanced by soaring ceilings that create a sense of connectivity throughout the living spaces. Enjoy the expansive great room with a fireplace that opens to a covered patio with breathtaking wooded views. Culinary enthusiasts will adore the upscale chef's kitchen with granite countertops, island, soft-close shaker cabinetry with crown molding, ambient lighting & stainless steel appliances, including a gas stove with vented hood. Retreat to the private primary suite, boasting a raised tray ceiling, massive walk-in closet and a spa-like bath featuring a luxurious walk-in shower with exotic tile, a bathing bench & a double vanity. Second floor includes a versatile open loft and a nanny/guest suite with a full bath. The finished lower level features 9ft ceilings, bedroom, full bath, recreation room & lots of storage space. Experience luxurious living at its finest in this extraordinary home!

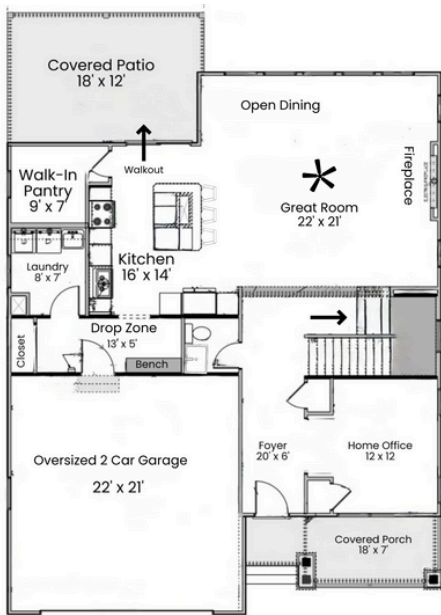
 **5**  
Bedrooms

 **4.5**  
Bathrooms

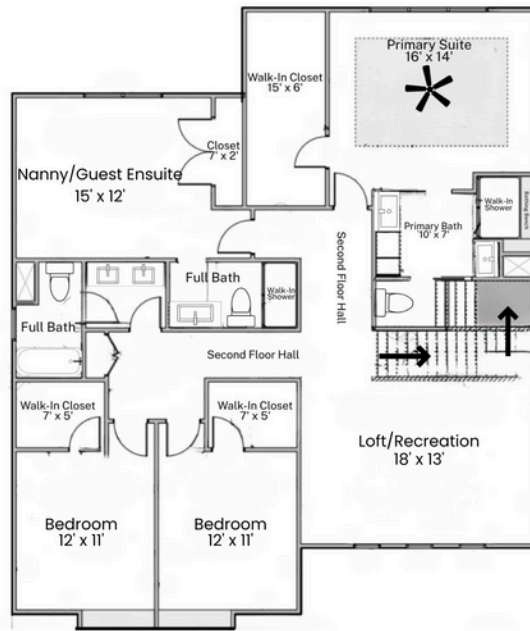
 **2**  
Garage

 **3683**  
Square Feet

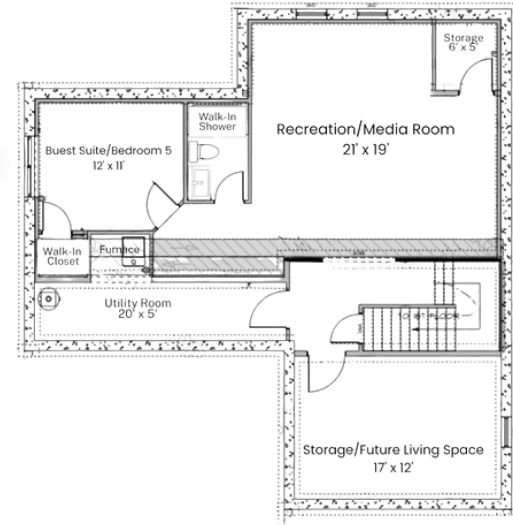




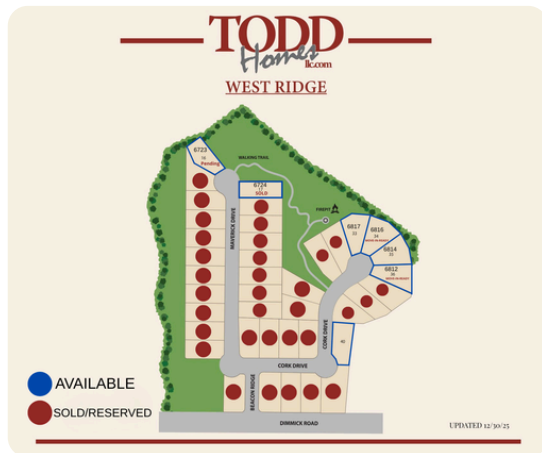
First Floor



Second Floor



Lower Level



Explore The Wilshire



West Ridge by Todd Homes LLC

Copyright 2025-2026 Todd Homes LLC. All rights reserved. Please be aware that, in line with our dedication to ongoing product enhancement, we reserve the right to alter our home pricing, availability, features, choice of product brands, dimensions, architectural details, and design specifications. This brochure serves solely for illustrative purposes and does not form any part of a legally binding contract. Room sizes approximate.

CONTACT US 513.823.3774



VISIT US: [www.toddhomesllc.com](http://www.toddhomesllc.com)