

 IRONING

IMPERIAL LINE SERIES

IMPERIAL

224/232

TWO ROLL DUAL
FINISH IRONER



CHICAGO®





HOW IT WORKS

Chicago's two roll Imperial series features high production gas or steam heated flatwork cylinder ironers with two vertically mounted rolls that provide dependability, economical operation, high quality finish, and serviceability. Our streamlined compression roll drive system improves linen stretch and contact to produce a superior finish and can meet any production requirements with rates comparable to costlier chest steam and thermal fluid ironers.



LASER LINE MODELS

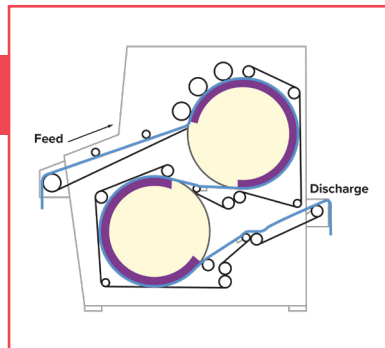
MODEL	ROLL DIAMETER	OUTPUT SPEEDS
IMPERIAL 224	24" (600 mm)	25 to 120 FPM (7.6 to 36.0 m/min)
IMPERIAL 232	32" (800 mm)	30 to 130 FPM (9.0 to 40.0 m/min)



KEY CHICAGO® ADVANTAGES

DOUBLE THE POWER

This breakthrough two roll design uses an innovative ironing method that applies heat and pressure to both sides of the linen for more efficient moisture removal and a superior ironed finish, while using one third less floor space. The increased linen-to-roll contact also means that ironing temperatures for linen with higher moisture retention can be reduced resulting in additional energy savings and longer useful linen life.



EAGLE EYE®

Chicago's gas heated ironers feature our patented Eagle Eye touchless temperature control system to constantly monitor digital temperature signals from a wide band of the ironing surface to ensure the most accurate control possible, as well as overall higher operational efficiency. This electronic technology eliminates mechanical contact shoes, high temperature limit switches, and temperature fluctuations due to excessive mechanical wear, wax/lint build-up, or lack of maintenance.



IMPERIAL 224/232 COMPACT



Based on our popular Imperial two roll ironers, Chicago offers a slimmer model for larger laundries who wish to process two lanes of pillowcases or napkins, or one lane of table linen in less than half the floor space of a full width ironer. This compact version offers exclusive two-sided ironing quality from two 24" (600 mm) or 32" (800 mm) diameter, and a compact 60" (1500 mm) wide heated rolls mounted vertically to provide high production and quality in less floor space. Pairing an Imperial Compact with a Skyline SP-2 small piece folder, DrawBridge two-lane linen transition conveyor, and LinenStream advancing conveyor, creates a high volume high quality, ironing/folding system in the smallest footprint in the industry.

WHY CHICAGO

RELIABILITY

- Heavy-duty drive with hardened sprockets and high temperature bearings
- Chicago's Exclusive Hi-Lyfe ribbons are durable and designed to leave little to no textile marks on the linen
- Steam Ironers are ASME certified
- Soft start gradually brings ironer to desirable speed so as not to stress components
- Low maintenance jog forward/reverse
- Rugged industrial steel frame

POWER PRODUCTION

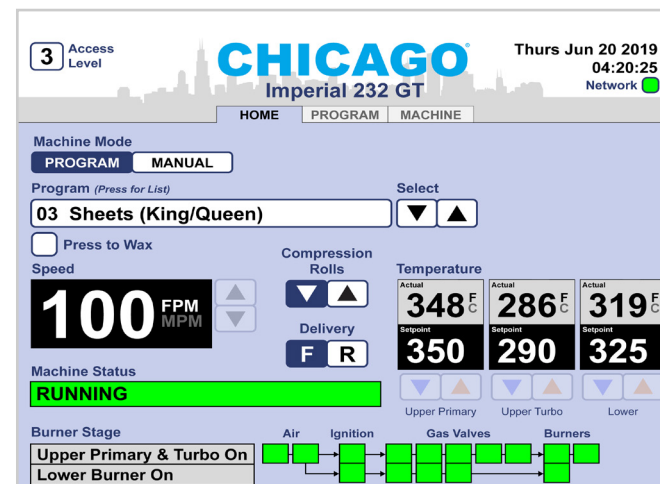
- Turbo burner dual zone sectionalized burner system allows the ironing temperature of the heated cylinder to be controlled independently as needed, increasing energy efficiency—especially useful during small piece processing
- Premixed quantities of air and gas are injected to create a flame that delivers more effective BTU's across the entire ironing surface
- Powerful moisture evaporation systems creates effective and efficient moisture removal, allowing the ironer to run at faster speeds
- Extra-wide range touch-control AC frequency inverter variable speed drive assures high quality at all speeds
- Multiple pneumatically controlled compression rolls for a higher quality finish
- Heat-Lock system featuring full exhaust canopy with two blowers and motors to hold heat within the ironing area and exhaust any excess by products for increase efficiency



CHI•Touch is the most advanced PC-based touchscreen control on the market. It is an intuitive, easy-to-learn interface that's effortlessly customizable to your needs. It gives you enhanced control over your Chicago equipment and is flexible enough to record, store, and export virtually any production parameter you want to monitor.

New Standard in Ironing Control (Q4 2019)

Chicago now offers an updated CHI•Touch system on its Imperial Series ironers, bringing unprecedented control and insight to your finishing department. This new system gives you password protected access to create custom programs for different item types allowing you to process each type to its maximum quality while taking the guess work out of your operators' hands. To keep your ironer producing consistent premium quality results, it also provides a complete visualization of all burner operational functions, built-in diagnostics, fault display with text and pictorial indicators, and programmable wax schedule reminders to make service and maintenance hassle-free.



Please visit our website for direct access to other product brochures, detailed floor plans and specifications, as well as videos of Chicago equipment in action. Call our factory sales office for additional assistance and help finding your local distributor.

Designed and manufactured in the U.S. for quality control and prompt availability of replacement parts.



773-235-4430



www.chidry.com



sales@chidry.com

CHICAGO DRYER COMPANY

2200 N PULASKI ROAD, CHICAGO, IL 60639 USA

Brochure #7614

Building on our industry-leading 130 years of experience, we continuously evolve and innovate to meet the changing needs of our customers—that is the unbeatable Chicago Advantage!

