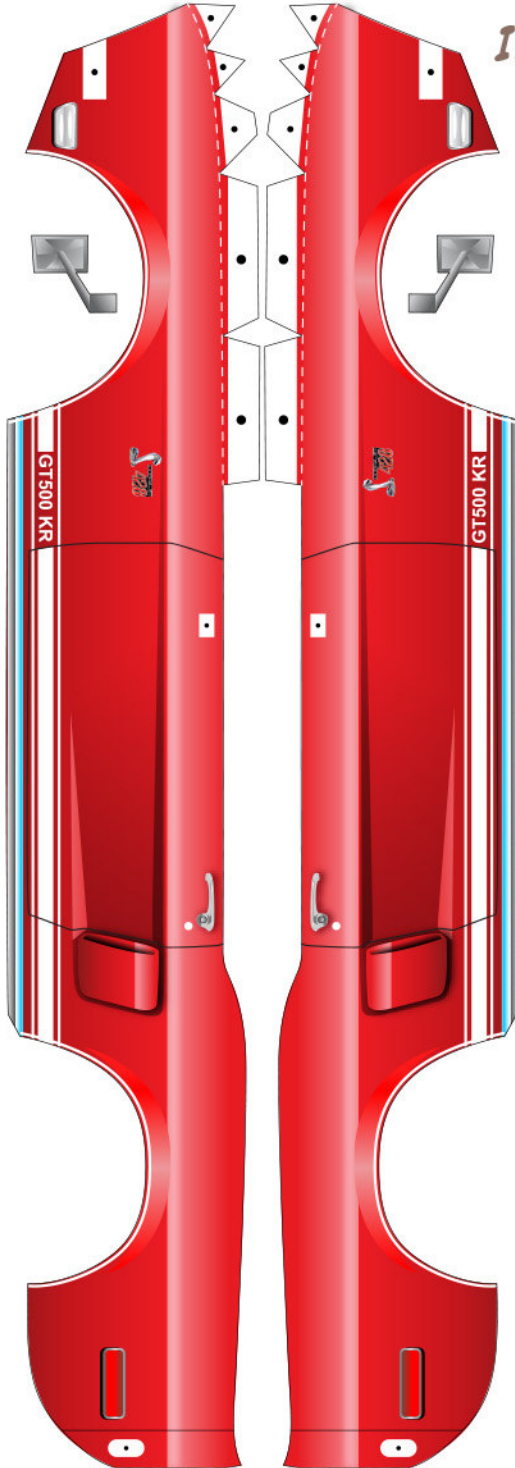


'68 Shelby Mustang GT500 KR brought to you by
BlueSpringsFordParts.com

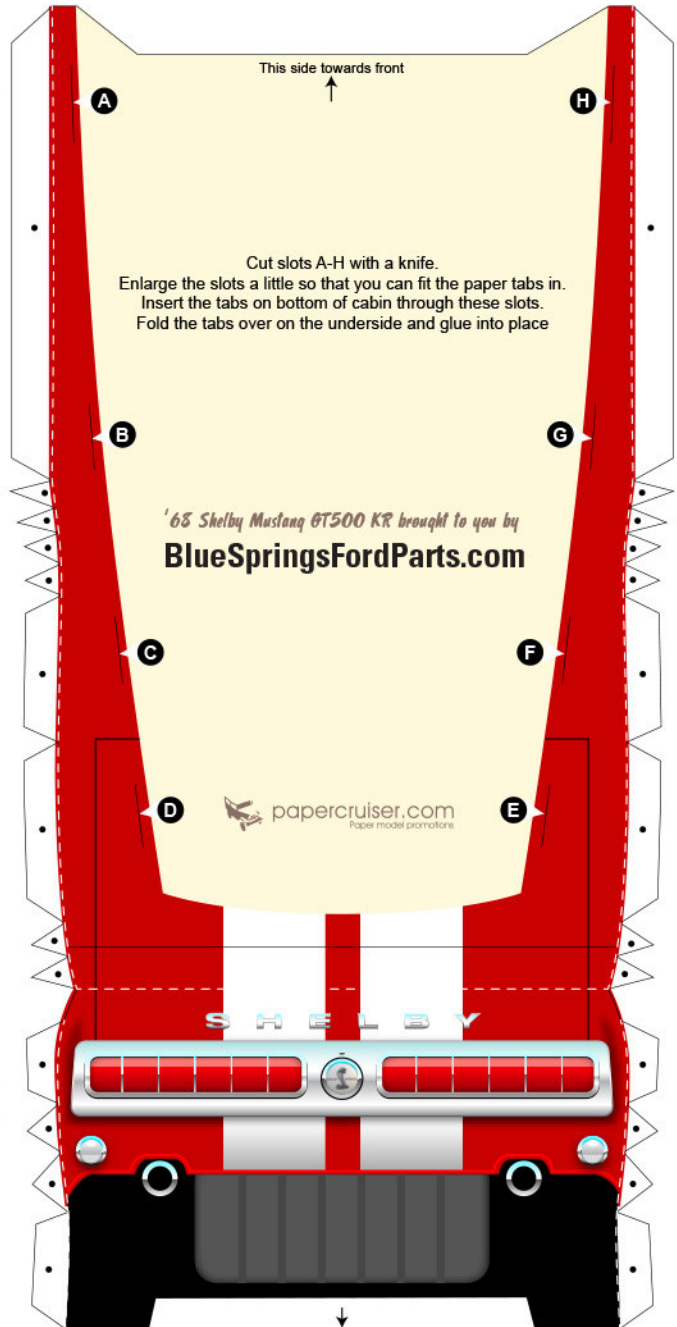
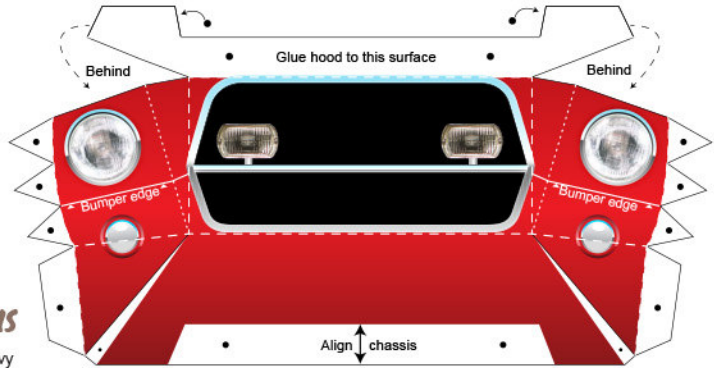
Valley Fold 

Peak Fold 

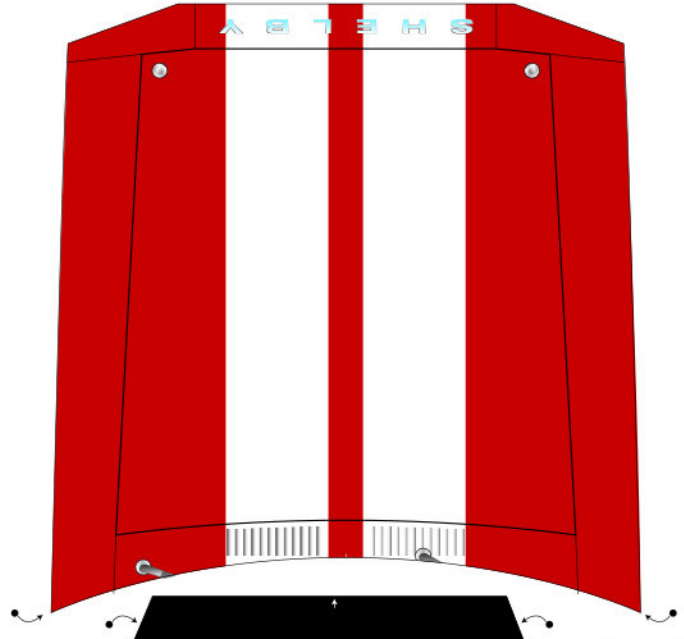


Instructions

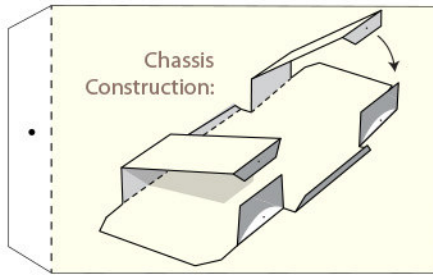
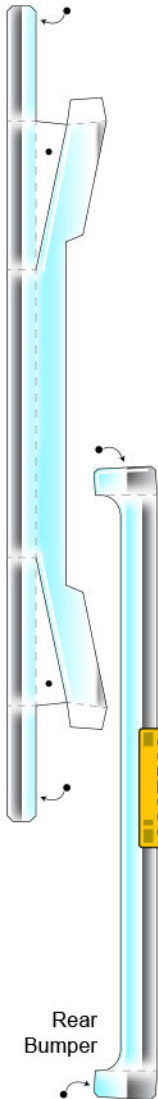
1. Print onto heavy paper (also called "card stock")
2. IN GENERAL: Score all fold lines and pre-fold all folds before gluing. Use common white glue, spread thinly, and pinch until it sticks. All tabs are assumed to be normal peak fold (unless shown otherwise.)
3. Cut out all of the parts. It is helpful to use a hobby knife and cutting mat (or other hard surface) for the small parts.
4. Build body (parts on this page)
5. Build cabin, attach to body with tabs.
6. Build hood, attach to windshield, then attach to grille.
7. Build chassis, attach to body, use alignment arrows.
8. Build wheels. Attach wheels to chassis.
9. Build bumpers, Attach to body
10. Cut out and attach mirrors and other small parts
11. With a matching-color marker, color the fold and cut lines for an improved appearance.



'68 Shelby Mustang GT500 KR brought to you by
BlueSpringsFordParts.com

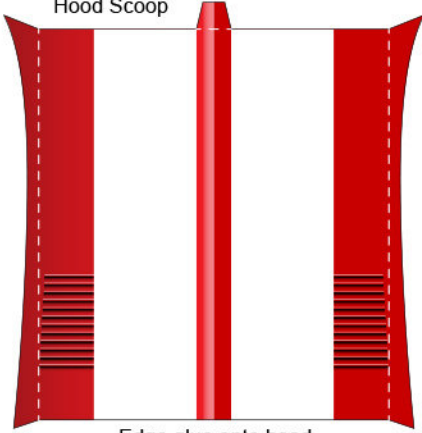


Front Bumper



Chassis Construction:

Hood Scoop



Edge glue onto hood



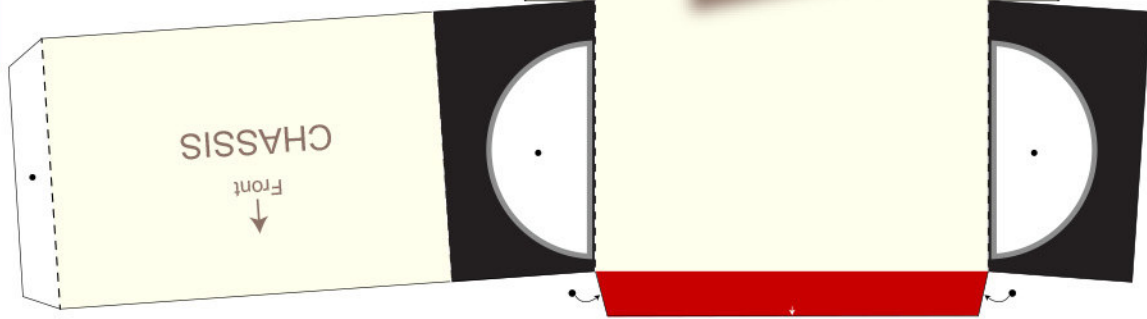
'68 Shelby Mustang GT500 KR brought to you by
BlueSpringsFordParts.com

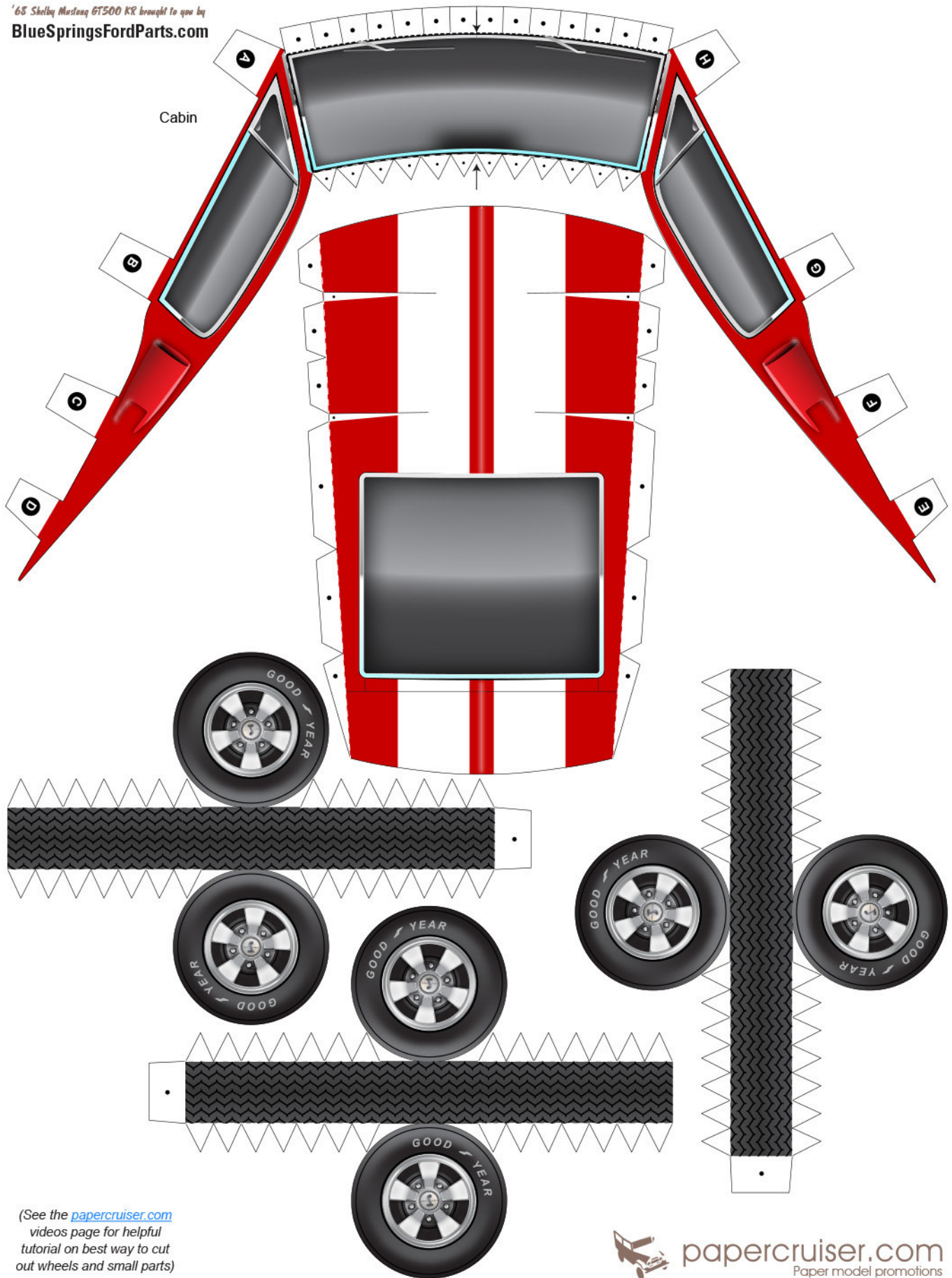
FORD
1968 Shelby Cobra GT500 KR

Paper model created by Jesse Smith
www.papercruiser.com
papercruiser@gmail.com
www.facebook.com/papercruiser
twitter.com/papercruiser

AUG 2013

papercruiser.com
Paper model promotions



(See the papercruiser.com
videos page for helpful
tutorial on best way to cut
out wheels and small parts)

