



Custom Brace Measurement Protocol Scanning System





Position the Patient

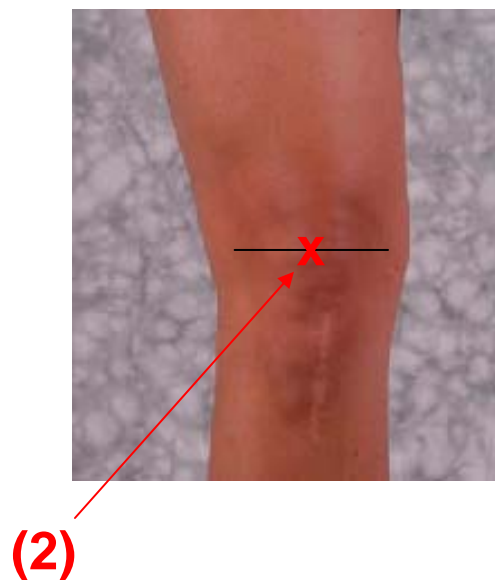
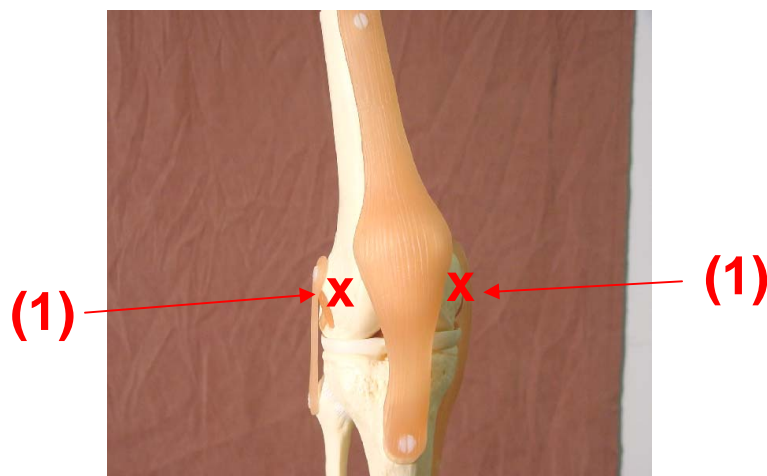
- Before performing any measurements, make sure the patient is standing with feet shoulder width apart weight-bearing evenly on both feet (slight flex at knee i.e. 5 degrees).
- Patient should be looking forward.





Identify Landmarks

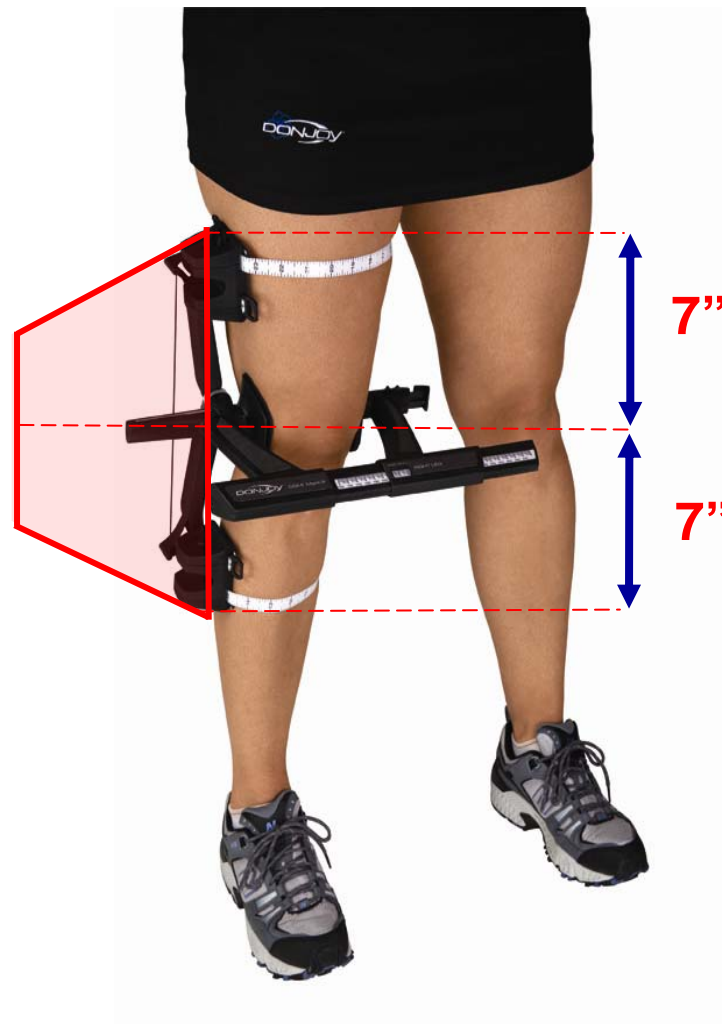
- Identify femoral condyles while patient is weight-bearing with feet shoulder width apart.
- Use Stylus marking feature to locate:
 - (1) Mid-condyle on Medial & Lateral sides of leg.
 - (2) Top Center of Patella





Scanning

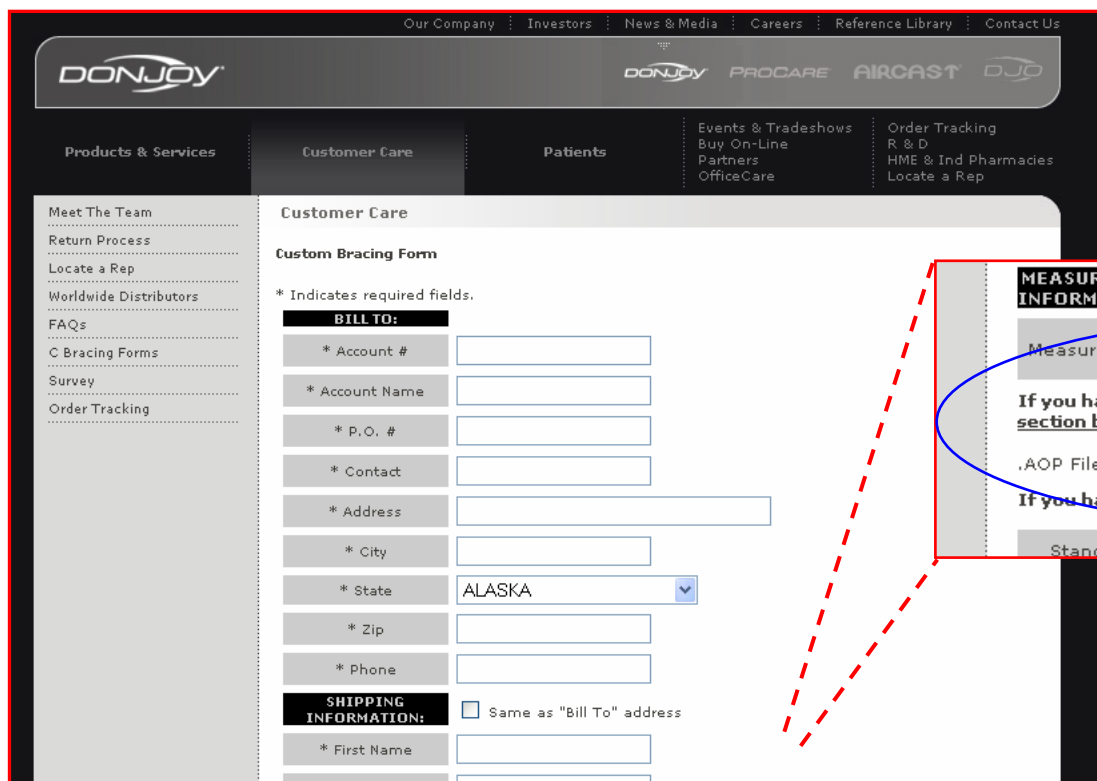
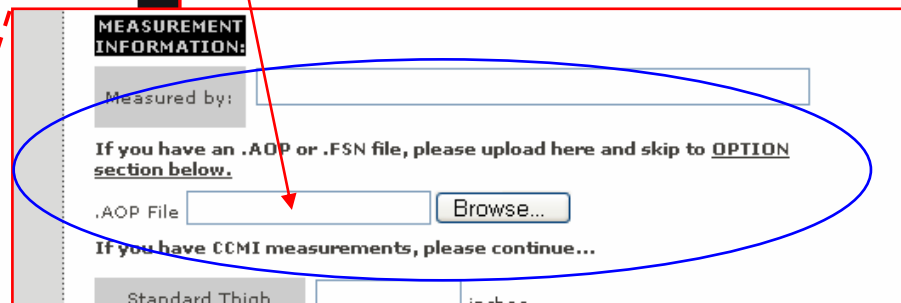
- Special Considerations
 - For heavier patients (more fleshy)
 - Use stockinet to contain tissue
 - Take M/L measurement w/ gauge
 - The reference receiver should be fastened 2" proximal to the Patella with a BLACK 1" elastic Velcro strap
 - The patient should be asked not to move while scanning.
 - The scan should be done in 5 to 6 sweeps maximum
- Minimum Scan area:
 - 7" below to 7" above Top of patella





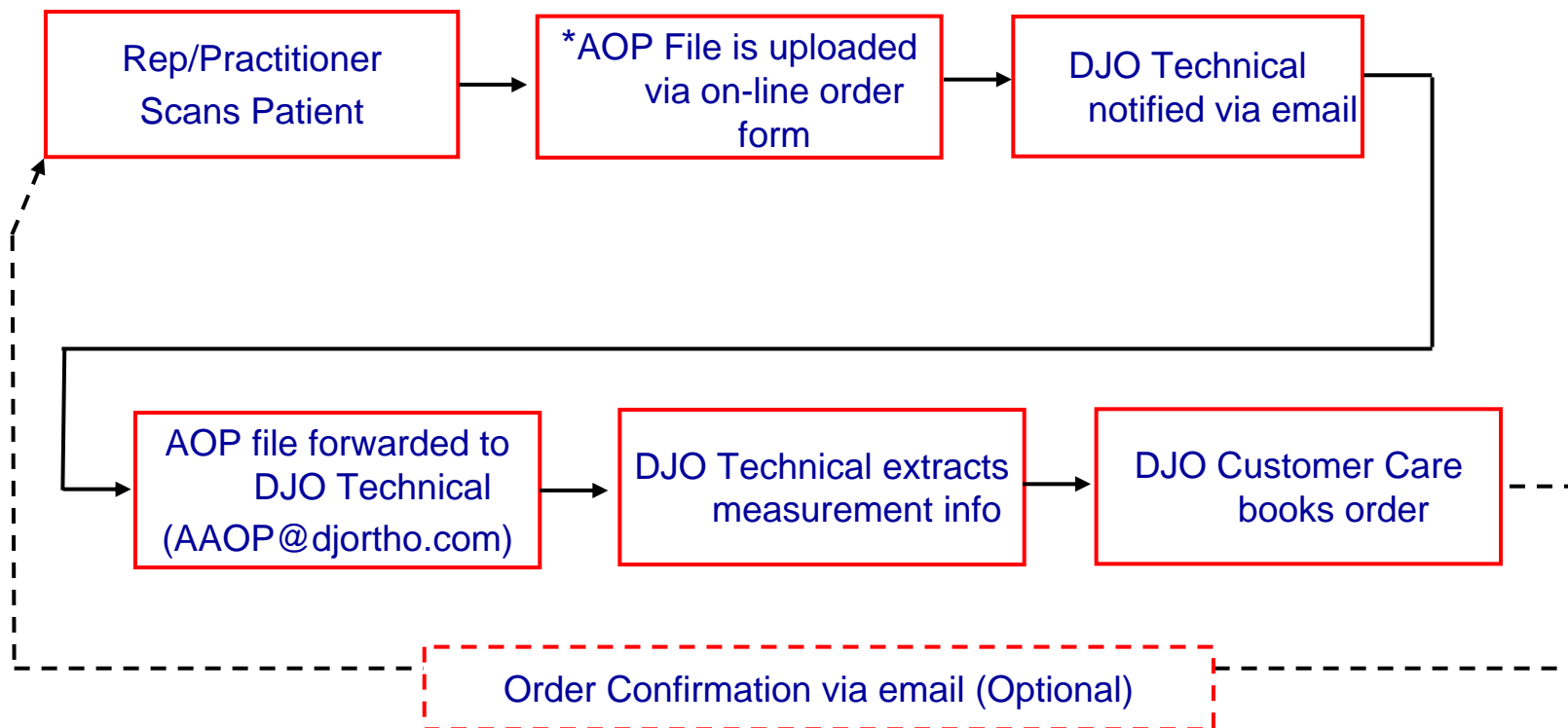
Entering Orders for Custom Brace – AOP file transfer

- Go to DJO Custom Order form on our website:
 - <http://www.donjoy.com/index.asp/fuseaction/customer.cbracingForm>
- Enter info & upload *.AOP file
 - Use PO# for File-name (e.g. 1234.AOP)



Process Flow Summary





Questions?

- DJO Technical Assistance # 888.405.3251