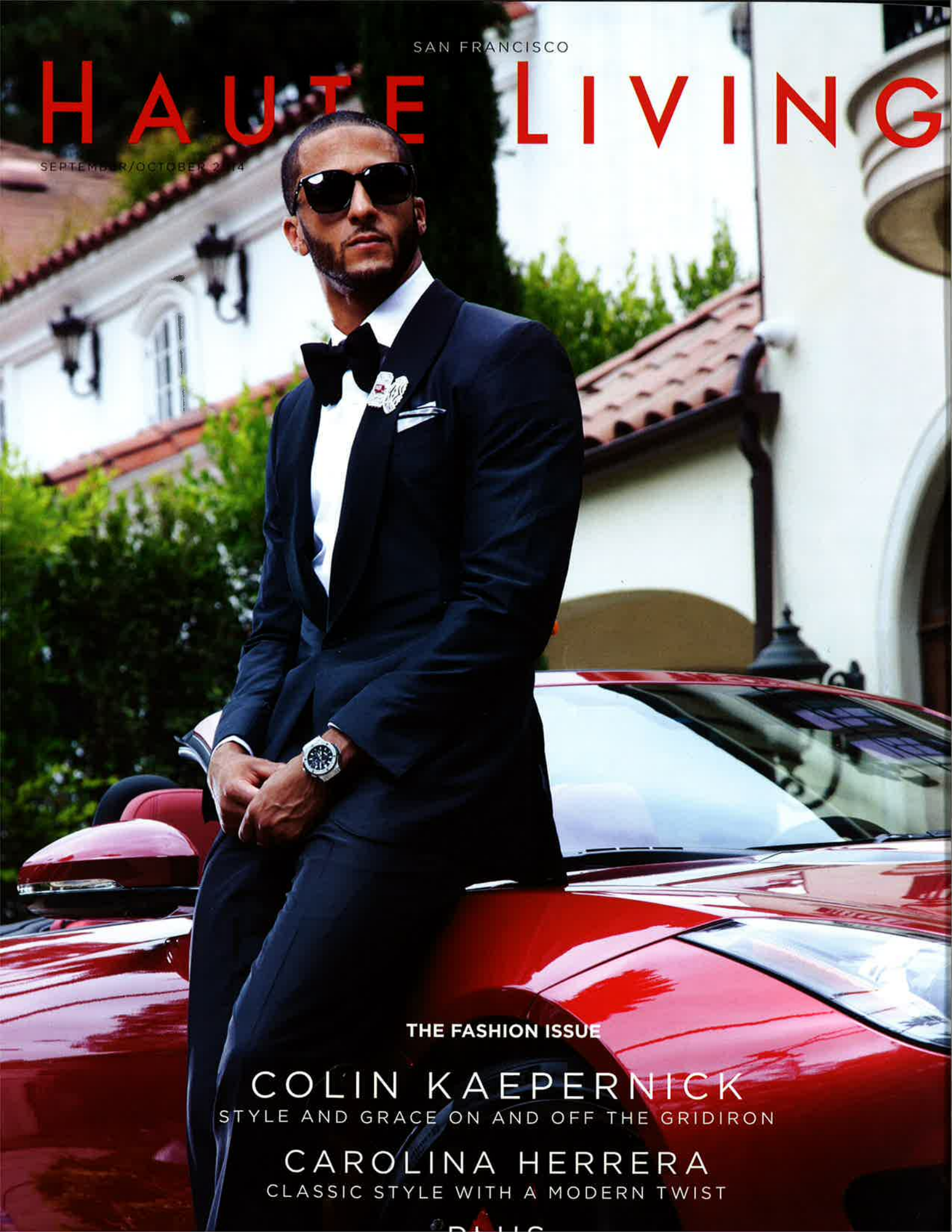


SAN FRANCISCO

HAUTE LIVING

SEPTEMBER/OCTOBER 2014



THE FASHION ISSUE

COLIN KAEPERNICK

STYLE AND GRACE ON AND OFF THE GRIDIRON

CAROLINA HERRERA

CLASSIC STYLE WITH A MODERN TWIST

PLUS

BY KELLY E. CARTER

THE SAN FRANCISCO SYMPHONY'S OPENING NIGHT GALA

Music director Michael Tilson Thomas kicked off his 20th season leading the San Francisco Symphony as the cultural institution's 103rd season commenced on Sept. 3rd at Davies Symphony Hall. After a scrumptious patrons' dinner inside a tented pavilion, the fashionable guests glided down a red carpet before being treated to pianist Yuja Wang's ferocious performance of George Gershwin's "Rhapsody in Blue." Singer-songwriter Bonnie Raitt, Thomas' longtime friend, belted out selected works from the American songbook of her late father, John. The gala, which benefited the Orchestra's myriad community outreach and education programs, concluded with a lively outdoor after-party, highlighted by a DJ, food and live entertainment.



- A** Michael and Leticia Kim
- B** Allison Speer and Vanessa Getty
- C** Dede Wilsey and Kathy Hilton
- D** Marissa Mayer and Nicky Hilton
- E** Bonnie Raitt, Michael Tilson Thomas and the San Francisco Symphony
- F** Gina Gallo and Jean-Charles Boisset
- G** Nancy and Paul Pelosi
- H** Sako Fisher and Mayor Ed Lee