

2019 BMW i8 Coupe

MSRP 147,500 plus \$995 D&H

STANDARD FEATURES

Performance and efficiency

- BMW TwinPower Turbo 3-cylinder 228-hp and 236 lb-ft torque engine with high-precision direct injection
- eDrive 141-hp and 184 lb-ft torque electric motor
- Hybrid sports car all-wheel-drive system with a total system output of 369-hp and 420 lb-ft torque
- Driving Dynamics Control with eDRIVE, ECO PRO, COMFORT and SPORT settings
- 2-speed front automatic transmission (electric motor)
- 6-speed rear automatic transmission
- 11.6 kW high-voltage lithium-ion battery pack with advanced active thermal management

Handling, ride and braking

- Hybrid-specific Dynamic Stability Control (DSC), including all-wheel drive functionality for independent drive sources, Brake Fade Compensation, Start-off Assistant, Brake Drying and Brake Stand-by features; with Dynamic Traction Control (DTC)
- LifeDrive vehicle architecture with lightweight aluminum Drive Module components and carbon-fiber-reinforced plastic (CFRP) passenger cell Life Module

Exterior

- BMW i 20" Radial Spoke Bi-Color wheels
- Scissor door design with lifting and turning function upwards towards the front
- LED Headlights and LED accent lights with BMW i U-shaped LED Daytime Running Lights
- BMW i U-shaped LED Brakelights
- Stream Flow aerodynamics with .27 coefficient of drag
- Carbon-fiber-reinforced plastic roof with UV protection and tinted clear vision coating

Seating and interior features

- Giga World (Includes full perforated Leather upholstery in Black or Ivory White)
- 6-way power front seats w/ driver memory
- Storage Compartment behind seats

Instrumentation and controls

- BMW Navigation Professional with Voice command and Advanced Real Time Traffic Information
- iDrive system with high-resolution 8.8" full-color touch-screen display, touchpad controller and 8 programmable memory buttons
- Full-color Head-up Display (HUD) with shift lights
- Bluetooth wireless technology

Comfort and convenience

- Comfort Access keyless entry
- Interior and exterior mirrors with automatic-dimming function
- Rain-sensing windshield wipers and Automatic headlight control
- Electric flow heater with auxiliary water heater
- Dynamic Cruise Control with braking function
- Park Distance Control (PDC)
- BMW Ambiance lighting with LED lights package

Audio system

- Harman Kardon Surround Sound Audio System
- HD Radio with "multicast" FM station reception
- Satellite radio with 1-year subscription
- Apple CarPlay

Safety and security

- Active Driving Assistant with Surround View
- Front and rear Head Protection System (HPS)
- Driver's and passenger's front airbag supplemental restraint system (SRS) with advanced technology
- Seat-mounted front side-impact airbags
- Front and rear safety belts with Automatic-locking retractors (ALR), automatic pretensioners and belt force limiter

GIGA WORLD (Standard Equipment)



Crafted lightweight Spheric leather for the seat covers, including perforated accents, with black leather on the instrument panel and the inner lining of the doors.

- Giga Amido Black Full Perforated Leather
- Giga Ivory White Full Perforated Leather
- Leather steering wheel with accents in Pearl-Gloss Chrome and Satin Silver

TERA WORLD DARK¹



Leather in Dalbergia Brown tanned with plant extracts has accents in Carum Grey, BMW i Black accents on stitching, seat belts and the leather steering wheel.

- Tera Dark Dalbergia Brown Full Natural Leather/Carum Spice Grey Cloth contrast
- Ceramic Controls
- BMW i Blue Seat Belt
- Black Brake Calipers
- Leather Engine Cover
- Anthracite Headliner

TERA WORLD COPPER¹



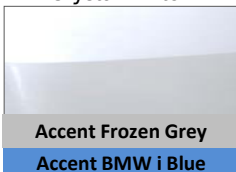
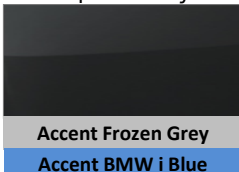
Leather in E-Copper with accents in Black Amido Leather, contrast stitching on the instrument panel, seat belts, and the leather steering wheel.

- Tera Copper Full Natural Leather/Black Amido Cloth contrast
- Ceramic Controls
- Black Brake Calipers
- Leather Engine Cover
- Anthracite Headliner

Paint Colors

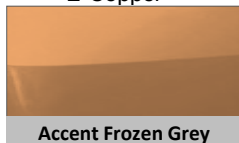
Sophisto Grey

Crystal White



E-Copper

Donington Grey



BMW Laserlight



Wheels



20" BMW i Radial Spoke wheels with staggered tires Available in **Bi-color or Jet Black Standard**



20" BMW i Light Alloy W-spoke wheels with staggered tires **No Cost Option**

*MSRP, including destination & handling charges. Pricing for vehicles shown may not include any or all options listed above in determining MSRP. Price excludes license, registration, taxes & options. Actual price determined by authorized BMW center. Certain option and package restrictions may apply. Prices & specifications subject to change without notice. 1 - Contact your authorized BMW center for more information.

2019 BMW i8 Roadster

ICON OF A NEW ERA.

STANDARD FEATURES

Performance and efficiency

- BMW TwinPower Turbo 3-cylinder 228-hp and 236 lb-ft torque engine with high-precision direct injection
- eDrive 141-hp and 184 lb-ft torque electric motor
- Hybrid sports car all-wheel-drive system with a total system output of 369-hp and 420 lb-ft torque
- Driving Dynamics Control with eDRIVE, ECO PRO, COMFORT and SPORT settings
- 2-speed front automatic transmission (electric motor)
- 6-speed rear automatic transmission
- 11.6 kW high-voltage lithium-ion battery pack and advanced active thermal management

Handling, ride and braking

- Hybrid-specific Dynamic Stability Control (DSC), including all-wheel drive functionality for independent drive sources, Brake Fade Compensation, Start-off Assistant, Brake Drying and Brake Stand-by features; with Dynamic Traction Control (DTC)
- LifeDrive vehicle architecture with lightweight aluminum Drive Module components and carbon-fiber-reinforced plastic (CFRP) passenger cell Life Module

Exterior

- BMW i 20" Radial Spoke Bi-Color Light Alloy wheels
- Scissor door design with lifting and turning function upwards towards the front
- LED Headlights and LED accent lights with BMW i U-shaped LED Daytime Running Lights
- BMW i U-shaped LED Brakelights
- Stream Flow aerodynamics with .28 coefficient of drag
- Carbon-fiber-reinforced plastic roof with UV protection and tinted clear vision coating

Seating and interior features

- Giga World (Includes full perforated Leather upholstery in Black or Ivory White/Black)
- 6-way power front seats w/ driver memory
- Storage Compartment behind seats

Instrumentation and controls

- BMW Navigation Professional with Voice command and Advanced Real Time Traffic Information
- iDrive system with high-resolution 8.8" full-color touch-screen display, touchpad controller and 8 programmable memory buttons
- Full-color Head-up Display (HUD) with shift lights
- Bluetooth wireless technology

Comfort and convenience

- Comfort Access keyless entry
- Interior and exterior mirrors with automatic-dimming function
- Rain-sensing windshield wipers and Automatic headlight control
- Electric flow heater with auxiliary water heater
- Dynamic Cruise Control with braking function
- Park Distance Control (PDC)
- BMW Ambiance lighting with LED lights package

Audio system

- Harman Kardon Surround Sound Audio System
- HD Radio with "multicast" FM station reception
- Satellite radio with 1-year subscription
- Apple CarPlay Compatibility

Safety and security

- Active Driving Assistant with Surround View
- Front and rear Head Protection System (HPS)
- Driver's and passenger's front airbag supplemental restraint system (SRS) with advanced technology
- Seat-mounted front side-impact airbags
- Front and rear safety belts with Automatic-locking retractors (ALR), automatic pretensioners and belt force limiter

GIGA WORLD (Standard Equipment)



Crafted lightweight Spheric leather for the seat covers, including perforated accents, with black leather on the instrument panel and the inner lining of the doors.

- Giga Amido Black Full Perforated Leather
- Giga Ivory White Full Perforated Leather with Black contrast
- Leather steering wheel with accents in Pearl-Gloss Chrome and Satin Silver

TERA WORLD DARK¹



Leather in Dalbergia Brown tanned with plant extracts has accents in Carum Grey, BMW i Blue accents on stitching, seat belts and the leather steering wheel.

- Tera Dark Dalbergia Brown Full Natural Leather/Carum Spice Grey Cloth contrast
- Ceramic Controls
- BMW i Blue Seat Belt
- Black Brake Calipers

TERA WORLD COPPER¹

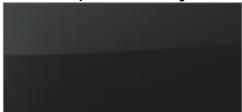


Leather in E-Copper with accents in Black Amido Leather, contrast stitching on the instrument panel, seat belts, and the leather steering wheel.

- Tera Copper Full Natural Leather/Black Amido Cloth contrast
- Ceramic Controls
- Black Brake Calipers

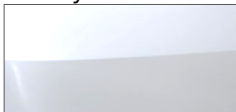
Paint Colors

Sophisto Grey



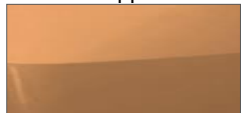
Accent Frozen Grey
Accent BMW i Blue

Crystal White



Accent Frozen Grey
Accent BMW i Blue

E-Copper



Accent Frozen Grey

Donnington Grey



Accent Frozen Grey

BMW Laserlight



Wheels



20" BMW i Light Alloy Y-Spoke wheels with mixed tires
Available in **Bi-color** or **Jet Black Standard**



20" BMW i Light Alloy W-spoke wheels with mixed tires
No Cost Option

*MSRP, including destination & handling charges. Pricing for vehicles shown may not include any or all options listed above in determining MSRP. Price excludes license, registration, taxes & options. Actual price determined by authorized BMW center. Certain option and package restrictions may apply. Prices & specifications subject to change without notice. 1 – Contact your authorized BMW center for more information.