

STEP 1 Your New blind

THANK YOU for purchasing our products. Your new blinds have been custom-crafted to your exact window dimensions from the highest quality materials. Once in your windows, they will provide you with a lifetime of beauty and trouble-free use.

INSTALLING your new blind is easy. Simply follow our step-by-step instructions. We recommend that you read through all the instructions before you start.

GETTING STARTED

REMOVE the blind from the packaging. Do not dispose of packaging until the blind is operating to you satisfaction. Check the diagram to make sure you have all the parts indicated for the appropriate type of installation.

Do not lower the blind yet.

TOOLS you may need to install your shades: pencil, screwdriver, 1/4 " nut driver, level, pliers and a drill with 7/64" drill bit.

Your brackets must be securely attached to the mounting surface. When screwing into a surface, the included screws must hit wood studs. Otherwise, use a secure fastener as illustrated (not included)

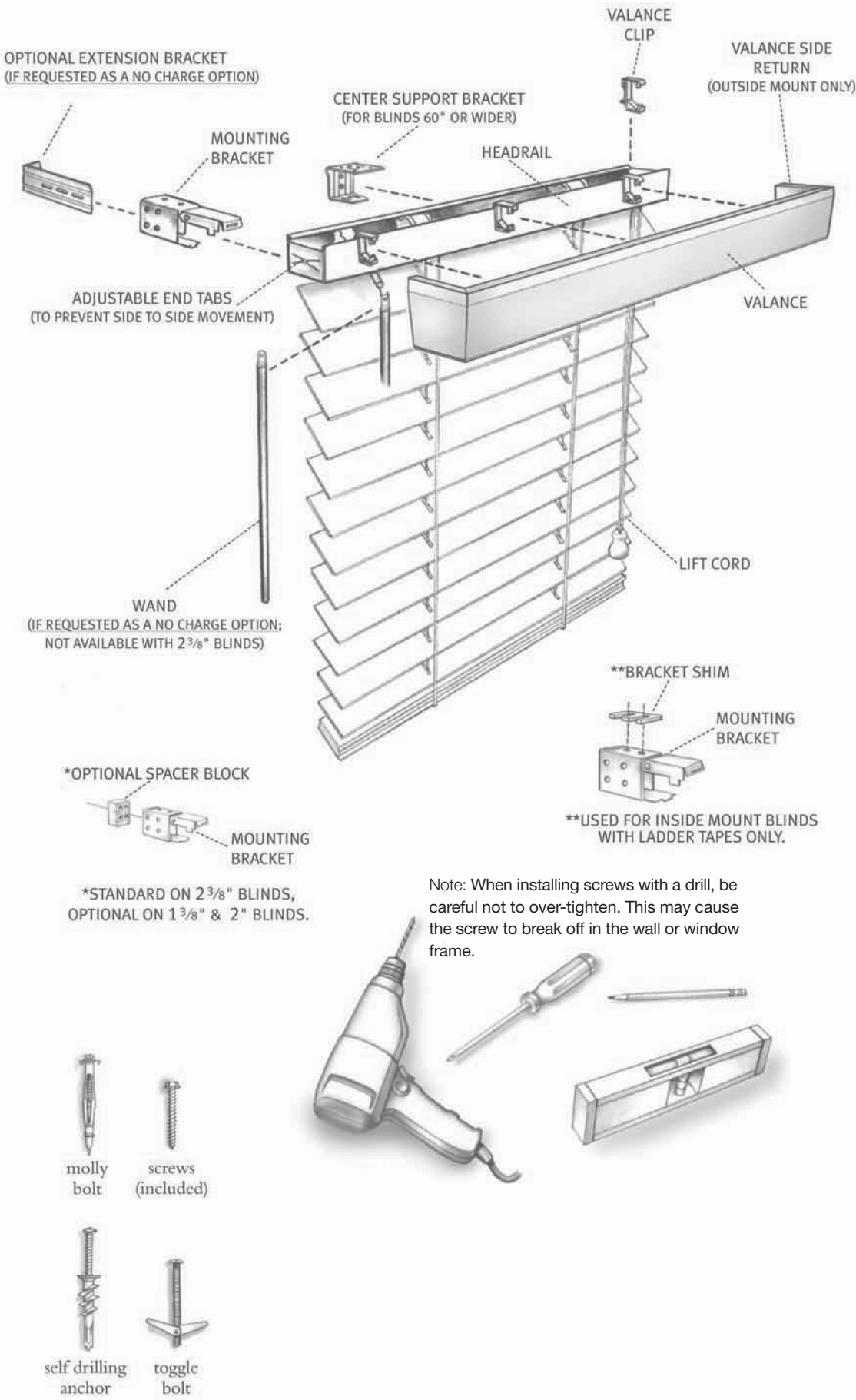
WALLBOARD OR PLASTER:

Use a secure fastener designed for hollow wall applications.

METAL: Pre-drill holes and use the included screws.

CONCRETE, STONE, BRICK OR TILE: Use a masonry drill and appropriate plugs, anchors or screws.

* When selecting a fastener, make sure it is designed to support the weight of the blind being installed. Follow the fastener manufacturer's instructions for proper installation of the fastener.



STEP 2 Attaching your brackets

Step 2A - INSIDE MOUNT

Place mounting brackets level and flush with window frame. Screw into the window frame through the holes on the inside of the bracket. If using the center support brackets, proceed to STEP 2D. Otherwise, proceed to STEP 3.

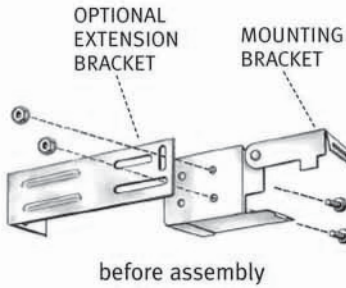
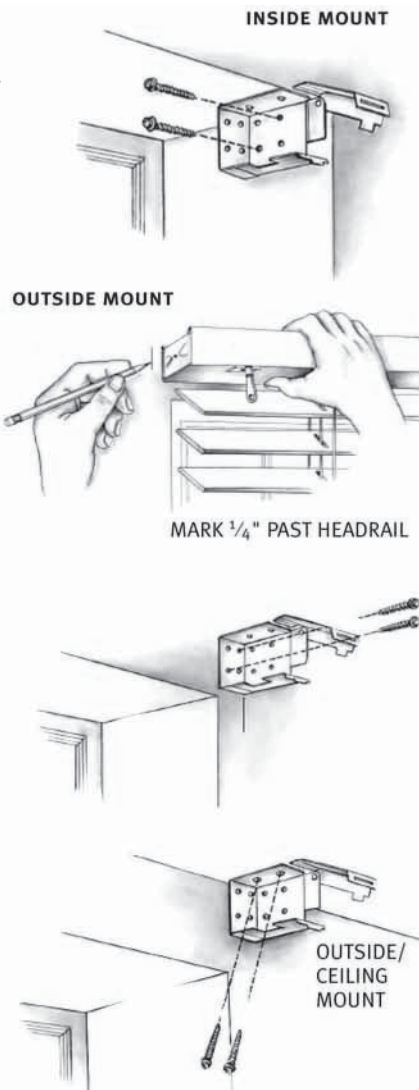
STEP 2B - OUTSIDE OR CEILING MOUNT:

Hold the blind in desired position and mark the window frame or ceiling 1/4" past each end of the headrail with a pencil. Remove blind and place mounting brackets level on pencil marks. Be certain that the mounting brackets are aligned with screws. If using extension brackets proceed to STEP 2C. If using center support brackets proceed to STEP 2D. Otherwise, proceed to STEP 3.

STEP 2C - ATTACHING OPTIONAL EXTENSION BRACKETS FOR OUTSIDE MOUNTS: Extension brackets are used to project the blind out from the mounting surface to clear obstructions such as window cranks and door knobs. Place extension brackets level on pencil marks. Be certain that the extension brackets are aligned with each other. Secure extension brackets to the wall with the screws supplied. Using the supplied nuts and short bolts, attach mounting bracket as shown. If using center support brackets proceed to STEP 2D. Otherwise, proceed to STEP 3.

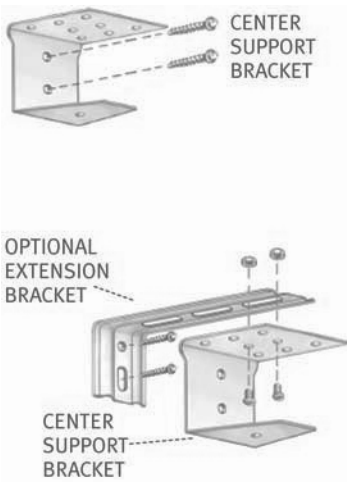
TIP: If mounting your brackets to a wooden window casing, pre-drill the mounting screw holes at least 1/4" from the edge of the wood to prevent the screws from splitting the casing.

PLEASE NOTE: Blinds with ladder tapes may require brackets installed 1/4" lower to ensure proper blind operation. Use the bracket shims provided.



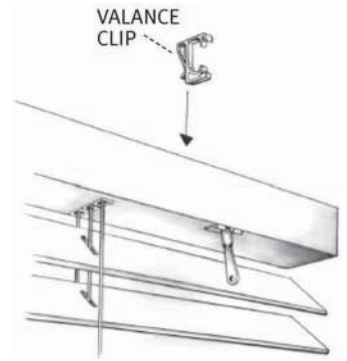
STEP 2D- ATTACHING CENTER SUPPORT BRACKETS:

For wider blinds you will need to install center support brackets. Center support brackets should be spaced evenly along the width of the blind, aligned with tops and backs of end brackets. If needed center support brackets can be attached to an extension bracket as illustrated. Make sure the brackets are positioned so they do not interfere with the operation of blind. Proceed to STEP 3.



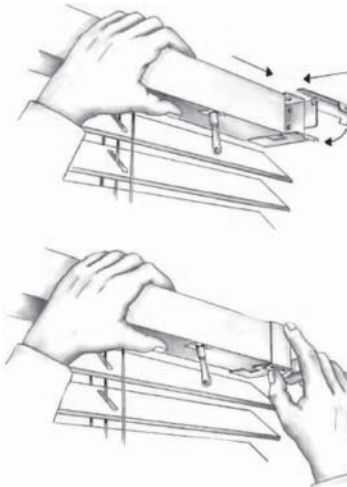
STEP 3 Attaching the valance clips

Snap the plastic valance clips on to the front of the headrail. Make sure the clips are in alignment with the mounting strips on the back of the valance. Proceed to STEP 4.

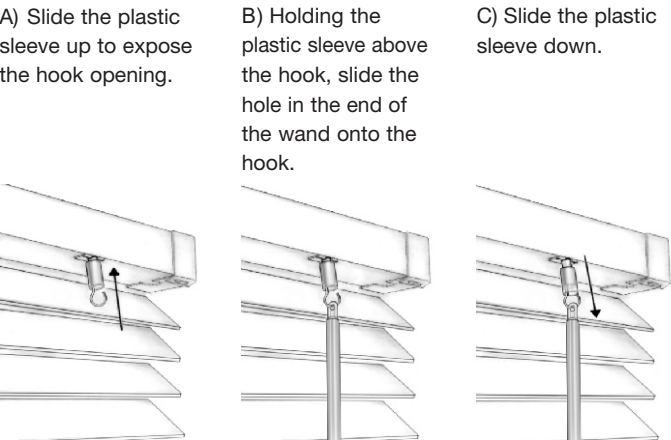


STEP 4 Inserting the headrail

Check blind to ensure that all cords and ladders hang freely. Open the bracket door latches by pushing up on bottom of bracket while lifting the bottom of bracket door up. Slide the headrail into the mounting brackets. Close bracket door latches into locked position. For blinds with wand control proceed to STEP 5. All others proceed to STEP 6.



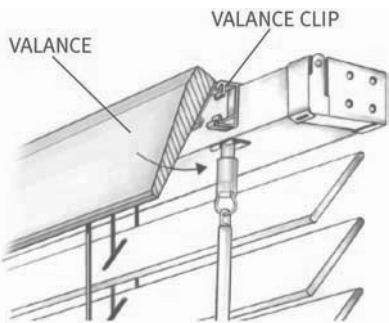
STEP 5 Attaching the wand



Proceed to STEP 6.

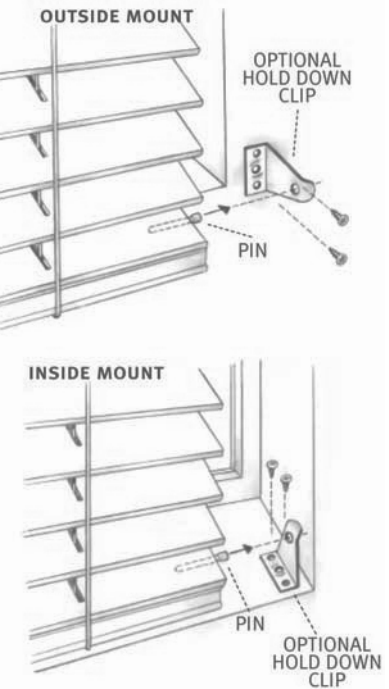
STEP 6 Attaching the valance

Snap the valance into the plastic valance clips, starting from the center of blind headrail and finishing one side at time. For outside mounts, if side returns are too long, they can be trimmed to size with a finetooth saw.



STEP 7 Attaching optional hold-down clips

Hold-down clips are used to secure the bottomrail of the blind in situations where excessive movement may be a problem. To install, place the hold-dow pins in the bottomrail end holes. Lower bottom rail and close slats. Position the hold down clips so that they will align with the pins to secure the bottomrail. Secure hold-down clips with screws. To unhook your hold-down clips once mounted, move the bottomrail in the appropriate direction to disengage the pins from the clip.



Operating your blind

To raise or lower blind, tilt slats so that they are in the "open" position, then pull cord toward the middle and down to release the cord lock. When the blind is at desired height, return cord to the vertical position to engage the cord lock.

Removing your blind

First, remove the balance from the blind. Start at one end of the of the blind and insert a flat blade screwdriver into the spot on the top, front of each mounting bracket. Push the screwdriver in toward the blind, The groove on the front of the headrail will disengage from the bracket allowing the blind to be removed.

Troubleshooting

MY BLIND DOESN'T LIFT.
Check to make sure cord is not caught in headrail. If hold down clips were used, make sure they have been released.

MY BLIND WILL RAISE AND LOWER BUT WILL NOT TILT.
Your brackets may be mounted too close to the top of the window casement, causing the tilt mechanism to bind. If your blind has decorative cloth tapes use the shims provided to lower the blind.
OR
Check inside the headrail for obstructions. Make sure all of the slats are laying properly on the ladders.

MY BLIND RAISES UNEVENLY.
Raise blind to the "up" position, pull each cord until the blind is all up. Pull the blind down.

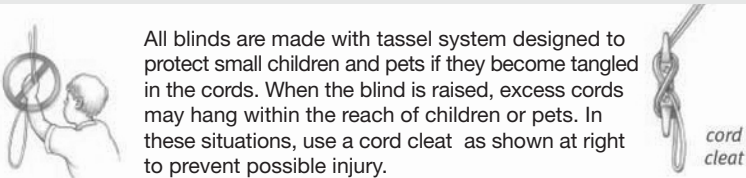
MY SLATS ARE HANGING OUT OF ALIGNMENT.
Lower the blind completely. While firmly holding the bottom rail, gently tug on the lift cords until the slats are even.

MY INSIDE MOUNTED BLIND SLIDES BACK AND FORTH BETWEEN THE BRACKETS WHEN OPERATED.
Using a screwdriver, bend out the adjustable end tabs on the sides of the headrail. See illustration under STEP 1.

Care and cleaning

Minimal care and cleaning is needed to maintain the beauty of your blinds.
TO VACUUM: Use brush or dust head attachment.
TO DUST: Use soft, clean cloth.

Safety



Wood Blinds
&
Alterwood Blinds

Wood Blinds

&

Alterwood Blinds

- Step by Step Installation
- Troubleshooting Tips
- Easy Care Instructions

