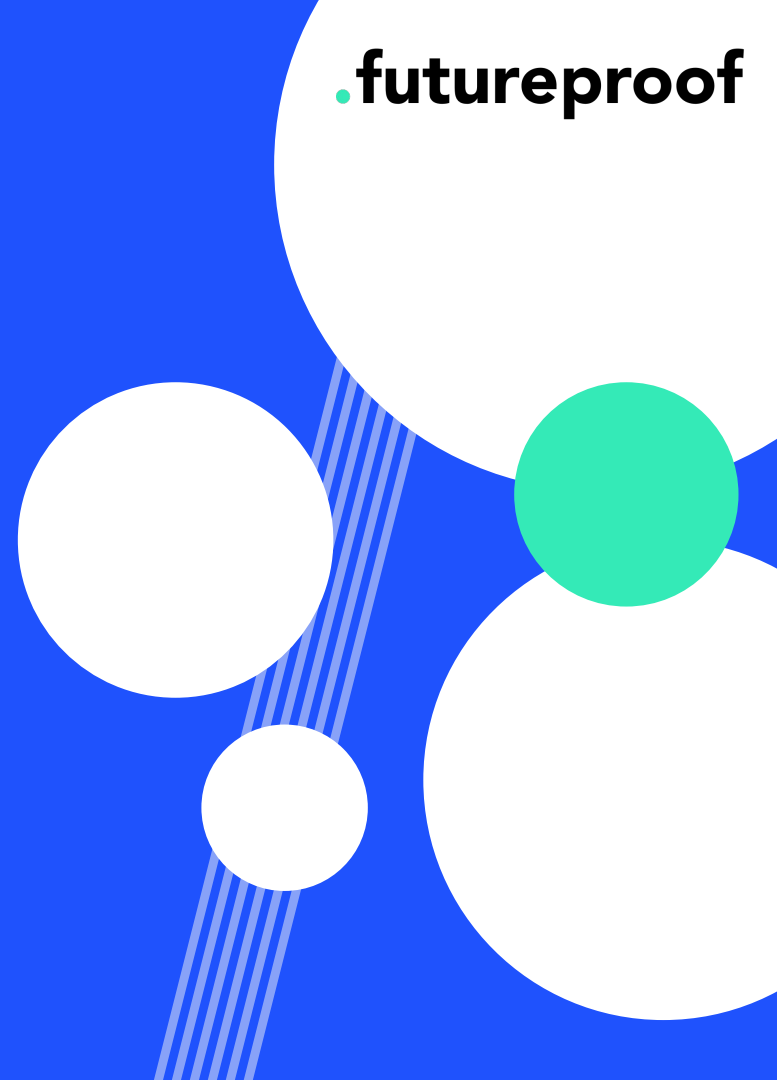


Our Carbon Report

2022



Contents

About this Carbon Report [page 3](#)

GHG Inventory Report [page 4](#)

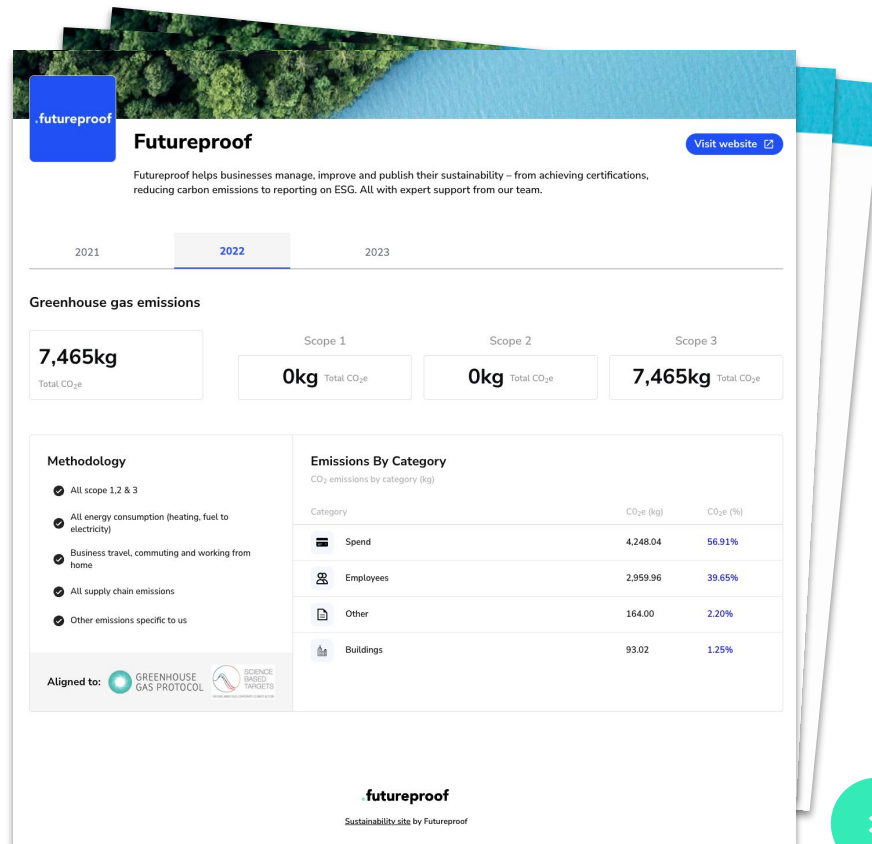
Offsetting [page 6](#)

Methodology [page 7](#)

About this Carbon Report

Throughout this report, we display our own Carbon Footprint across their Scopes 1, 2 and 3. You can view our live Carbon Report [here](#).

We have looked back across 2022 to understand our impact, and going forward we will be capturing this data on a quarterly basis. We have utilised our own Emission Manager which aligns to the Greenhouse Gas protocol. More information regarding the methodology can be found on [page 6](#).



GHG Inventory Report

This export report is a download of our emissions from Jan 2022 → Dec 2022

2022 emission data	Tonnes of CO2e
Scope 1: Direct emissions from owned/controlled operations	0.00
Scope 2: Indirect emissions from the use of purchased electricity, steam, heating, and cooling	0.00
Scope 3 // Category 1: Purchased goods and services	2.80
Scope 3 // Category 2: Capital goods	1.45
Scope 3 // Category 3: Fuel and energy related activities	0.09
Scope 3 // Category 6: Business travel	2.52
Scope 3 // Category 7: Employee commuting	0.45
Scope 3 // Category 11: Use of Sold Product	0.16
Scope 3 Total	7.47
Total Emissions	7.47

List of Scope 3 activities excluded

Within Scope 3, we have excluded the following categories:

Category 4: Upstream Transportation and Distribution - N/A - no distribution or transportation used

Category 5: Waste Generated in Operations - N/A - waste related activities will be identified under Category 7 (telecommuting)

Category 8: Upstream leased assets - N/A - we do not lease assets

Category 9: Downstream Transportation and Distribution - N/A - no distribution or transportation used

Category 10: Processing of sold products - N/A, our product is ready for clients to use requiring no further processing

Category 12: End of life treatment of sold products - N/A - we have a SAAS offering so the product is not disposed of


Category 13: Downstream leased assets - N/A, we do not currently lease anything out (playing the role of a lessor)

Category 14: Franchises - N/A, we do not own or operate a franchise model or anything similar to this

Category 15: Investments - N/A, we do not act as an Investor, nor provide financial services to customers

Offsetting

Acknowledging the volume of emissions that occurred during 2022, **we have purchased carbon removal credits via Patch.io to account for there 7.47 tonnes of CO2e emissions.** Proof of purchase is visible via this certification [here](#) and the project details are showcased below.

Project Name	Volume of Credits	Cost per Tonne	Registry ID	Description
 Ras Ghareb Wind	7.5 tonnes CO2e	£4.76	GS11557	<p>The Ras Ghareb Wind Energy (RGWE) project in Egypt is a 262.5 MW renewable energy plant situated in Ras Ghareb on the Gulf of Suez. As an independent power producer (IPP), it will supply all its electricity to the Egyptian Electricity Transmission Company (EETC) through a Power Purchase Agreement (PPA).</p> <p>The project aims to reduce greenhouse gas emissions by displacing electricity generation from fossil fuel-based power plants. With the capacity to power 150,000 households, RGWE contributes to Egypt's goal of achieving 30% non-conventional renewable energy (NCRE) generation by 2035, aligning with the government's energy policies.</p>
Total	7.5 tonnes CO2e	£4.76	<i>In 2022 we purchased Carbon Credits to account for all of our measured emissions.</i>	

Methodology

Methodology (part 1)

Introduction

The Futureproof Emission Manager follows the Greenhouse Gas Protocol, the widely-used international protocol for carbon accounting.

The engine uses science-based emissions data and a combination of spend-based and activity-based methods to calculate your company's greenhouse gas emissions.

Methodology (part 2)

Methodology

Each business activity that is input into Futureproof is paired with a corresponding emissions factor, which generates the calculation of its total carbon footprint: $\sum (\text{Business activity} \times \text{Emission factor}) = \text{Company Carbon Footprint}$.

The Business activity is the input into Futureproof from your company – for example, the km of distance travelled, kWh recorded, money spent, etc. There are built-in assumptions around the business activities that will be listed below.

Emission factors indicate the amount of greenhouse gasses emitted for each activity per unit – e.g. the kilograms of carbon dioxide equivalent (kg CO₂-eq) per litre, kWh, currency unit, etc.

Futureproof's Carbon Manager uses emission data from The UK Government Department for Business, Energy & Industrial Strategy (BEIS), company reports and industry-spend calculations. These are regularly updated by Futureproof.

Methodology (part 3)

Scope 1 (direct emissions)

Description

Scope 1 emissions are direct emissions from company-owned and controlled resources. In other words, emissions are released into the atmosphere as a direct result of a set of activities, at a firm level.

Business activity data input into Futureproof

km distance travelled (to measure company owned vehicles)

kWh recorded (to measure company owned and controlled fuels or heating sources)

Methodology (part 4)

Scope 2 (indirect emissions - owned)

Description

Scope 2 emissions are indirect emissions from the generation of purchased energy, from a utility provider. In other words, all GHG emissions released in the atmosphere, from the consumption of purchased electricity, steam, heat and cooling.

Business activity data input into Futureproof

kWh recorded (to measure purchased energy from a utility provider)

Methodology (part 5)

Scope 3 (indirect emissions - not owned)

Description

Scope 3 emissions are all indirect emissions - not included in scope 2 - that occur in the value chain of the reporting company, including both upstream and downstream emissions. In other words, emissions are linked to the company's operations. There are 15 categories of scope 3 emissions, as published by the Greenhouse Gas Protocol.

Business activity data input into Futureproof

- kWh recorded (to measure employee work from home energy usage)
- kg recorded (to measure company waste produced)
- km distance travelled (to measure employee commuting)
- km distance travelled (to measure company business travel)
- £ spent on expenses (to measure to upstream emissions)

