

CSRD & EU TAXONOMY REPORTING, SIMPLIFY COMPLIANCE WITH GREENOMY



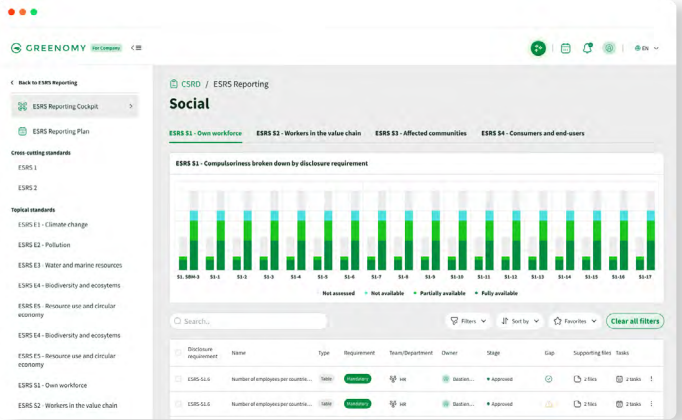
Greenomy's AI-powered ESG reporting solution and supporting Sustainability Advisory Services help companies collect and manage sustainability data and make it easy to meet reporting requirements of the **CSRD (Corporate Sustainability Reporting Directive)** and **EU Taxonomy**.

Begin your journey towards enhanced ESG reporting with Greenomy and fast-track your organisation's transition towards sustainability.

80% SAVINGS
ON AN IN-HOUSE BUILD

7x FASTER
REPORTING PROCESS

ALWAYS UP TO DATE
WITH LATEST LEGISLATION



WHY CHOOSE US?

EXPERTISE
Customised guidance to secure ESG compliance

SIMPLIFICATION
Streamlined reporting requirements for all stakeholders

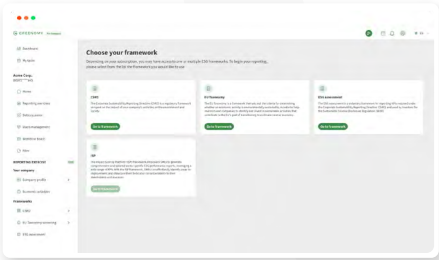
EFFICIENCY
An AI-enabled platform that leads to cost & time savings

AUTONOMY
Master your ESG Reporting, drive strategic change

HOW WE SIMPLIFY ESG REPORTING

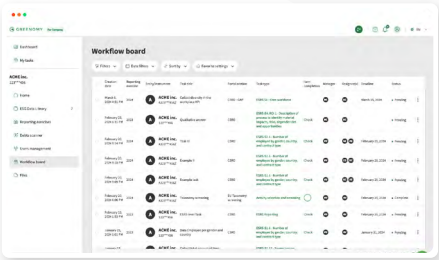
DIGITISED FRAMEWORKS

Simplified legislations ESG frameworks (CSRD, EU Taxonomy), drilled down into specific data points.



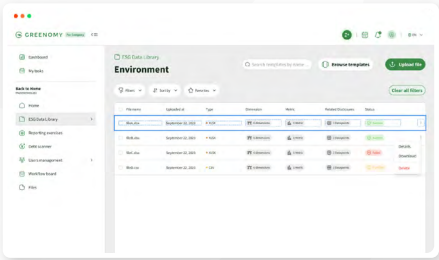
BUILT-IN WORKFLOWS

Coordinate tasks and deadlines across teams and legal entities and create approval workflows.



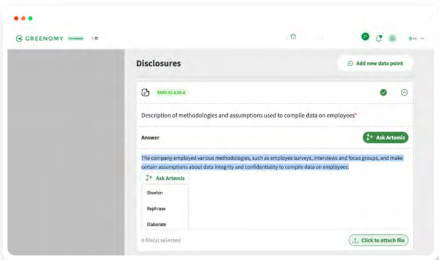
DATA INTEGRATIONS

Easy upload of company data via our ESG Data Library and connectors.



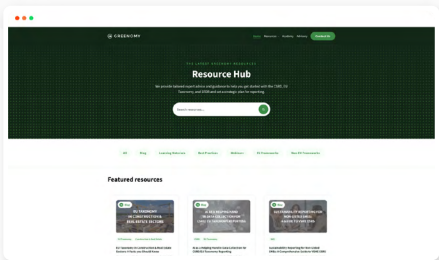
AI & AUTOMATIONS

Custom Generative AI tailored to ESG & integrated into reporting journey.



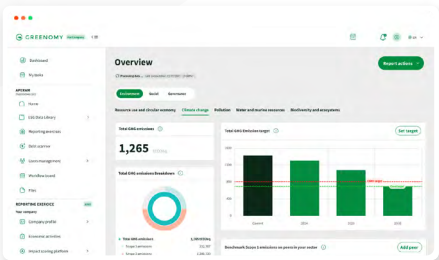
CAPACITY BUILDING

Greenomy Academy, Resource Hub & Guidance GPTs continuously updated with latest legislative changes.



ADVISORY SERVICES

Sustainability Advisory tailored to your needs including Double Materiality & Gap Assessments and audit review.



FOR MORE INFORMATION: GREENOMY.IO

