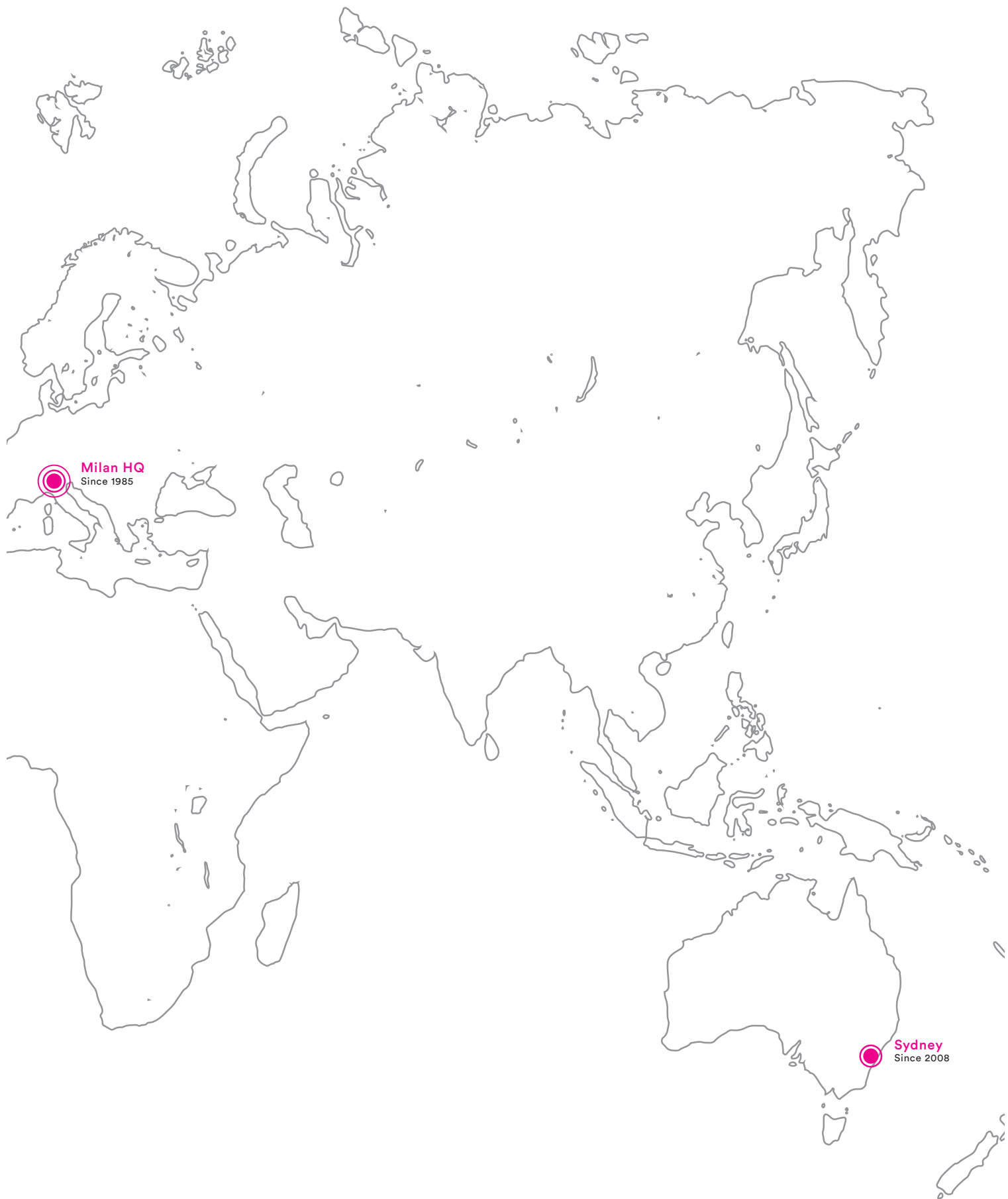




London
Since 2015

New York
Since 2011

A GLOBAL
PRODUCER OF
HIGH-END
ARCHITECTURAL
FABRICATIONS



Milan HQ
Since 1985

Sydney
Since 2008

A global presence

+

3750

projects realized

+

Over

30

Years of activity

+

100%

Made in Italy

=

TRUSTED BY THE FINEST
ARCHITECTS IN THE WORLD

© Copyright Extravega

Antonio Rilloso - CEO
Jolyne Marcato - Expansion & Strategy

Graphic Design
Design Group Italia

Texts
Extravega

English Texts
Marco Zangari

Printed in Italy
2018

CONTENTS

IDENTITY	8
THE EXTRAVEGA APPROACH	11
MATERIALS & INNOVATION	13
PROJECTS	
SPIRAL GLASS STAIRCASE	16
HAUTE HORLOGERIE SHOW	28
LUXURY WELLNESS CENTER	38
ENCLOSING THE RIVER	48
JAPANESE RESTAURANT INTERIOR	58
BUSINESS & FASHION MEMBERSHIP CLUB	68
GLASS STAIRCASE AND LIFT TOWER	80
PRIVATE RESIDENCE INTERIOR	90
INTERIOR FASHION RETAIL	100

WE OFFER TURNKEY SERVICE FOR THE MOST COMPLEX PROJECTS

Extravega operates internationally. With headquarters in Milan, and branches in New York, Sydney and London, Extravega specializes in the design, manufacture, and installation of custom design projects.

Founded in 1985, Extravega continually evolves to meet the demands of design communities. Our long history of collaboration with world renowned architects and designers situates us at the forefront of onsite installation, furniture production, artwork, and design.

Extravega works closely with general contractors and suppliers. Trusted partners are earned. We understand that suppliers and contractors are core team members to complete the most exacting design visions.

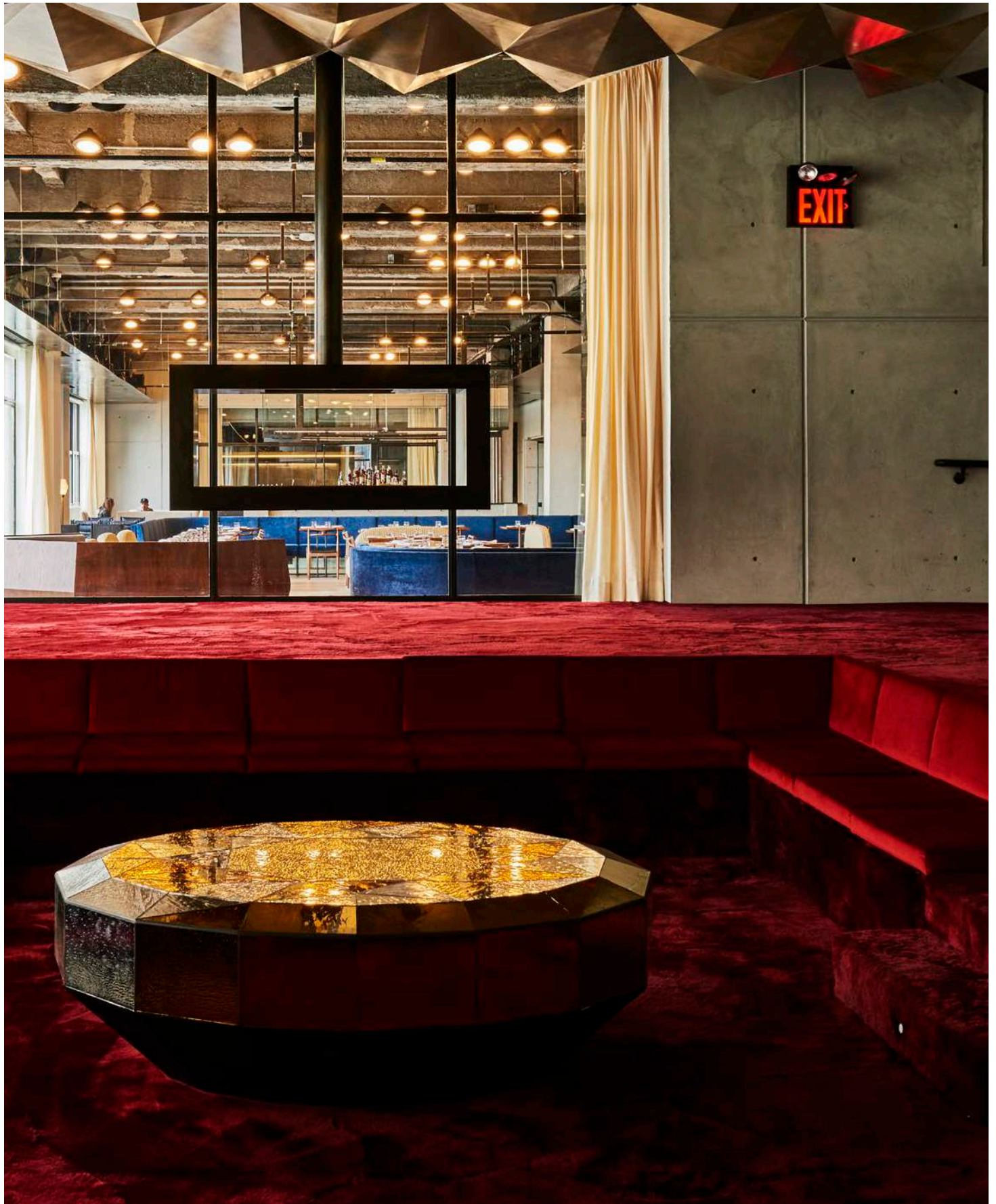
Extravega's projects are varied and diverse. Showrooms, luxury branded shops, offices, exhibition displays to hotel renovations, buildings, and residences are a mere selection.

Extravega thrives in complicated design environments because precise coordination is always paramount.

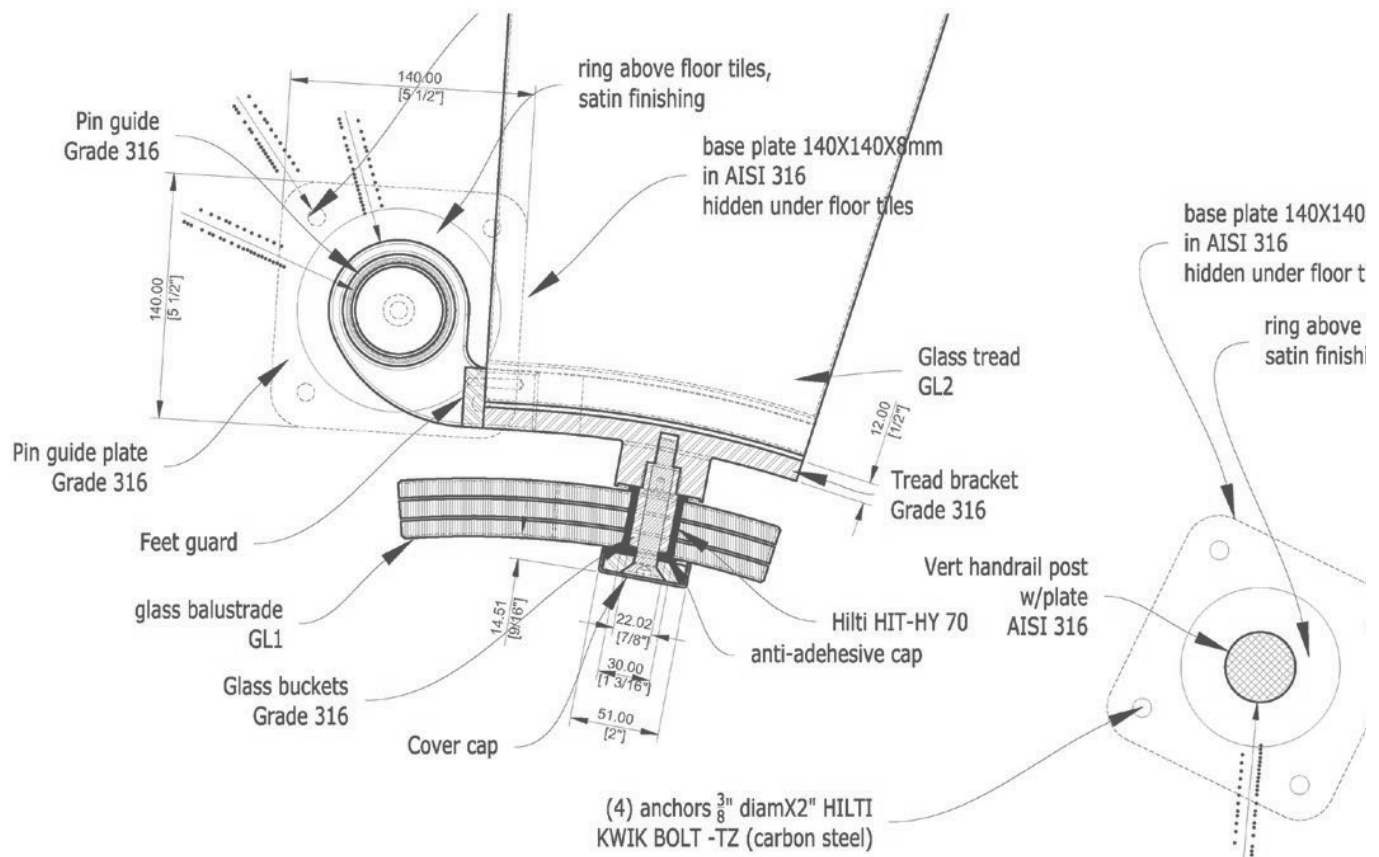
Customers see their ideas become reality. We follow from concept to realization the clients' needs, budgets, and deadlines.

To our customers, our promise and our ethos, for over thirty years, has been to deliver their dreams.

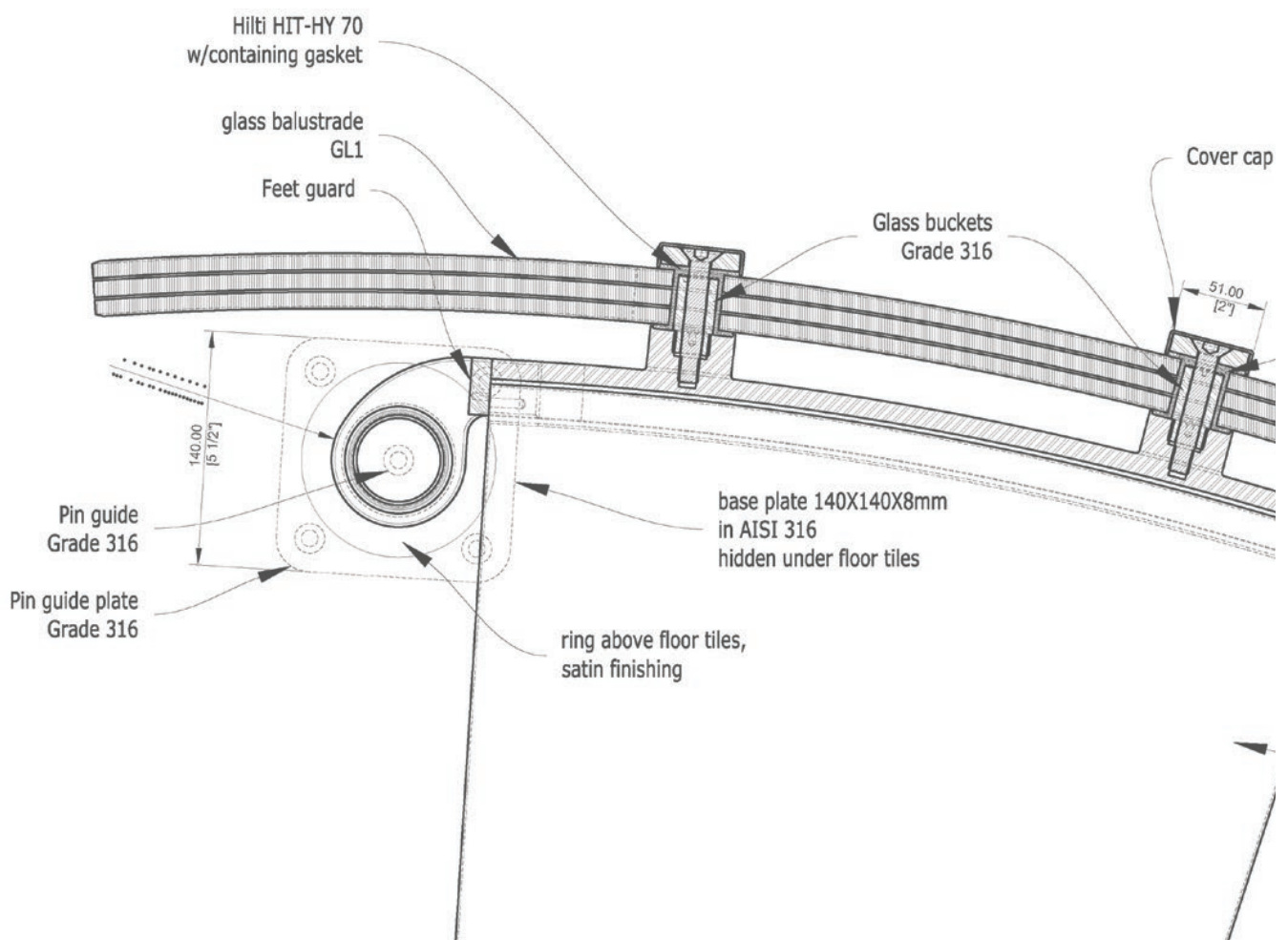




Spring Place, New York, USA



S1-E16 Front view of the return balustrade and bolt connection



S2-E16 Front view of the return balustrade and bolt connection

8mm
les
floor tiles,
ng

THE EXTRAVEGA APPROACH

EXPERIENCE, KNOWLEDGE, PASSION AND RELENTLESS TECHNOLOGICAL INNOVATION

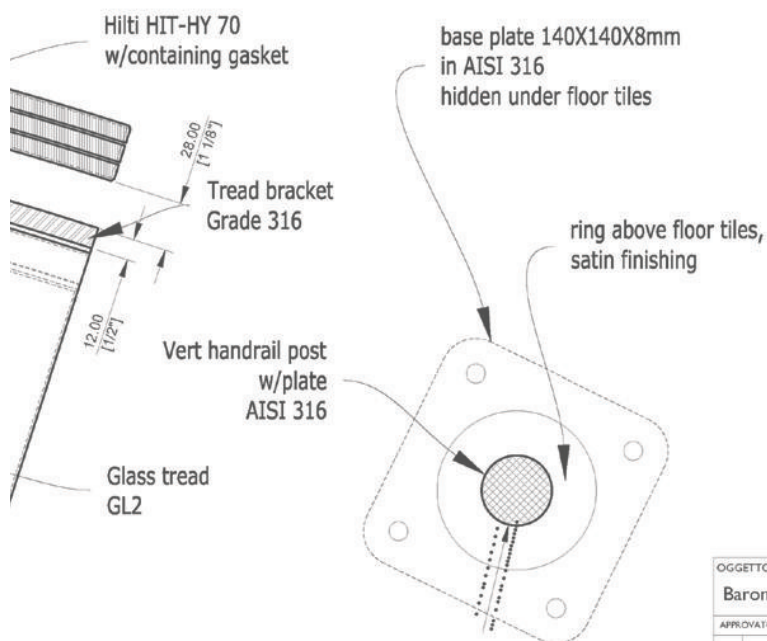
Extravega's team of engineers and architects solves problems. Our experience produces technical solutions optimized for time and budget without ever losing sight of the project's original intent.

Our team's working knowledge extends to the finer tectonic qualities of: metals, glass, plastics, woods, resins, liquid metals, and composites. Our expertise is vast and it continues to grow through research.

Quality control is a passion. Our internal technical department oversees a rigorous adherence to protocols and systems. The client's needs are always at the forefront; our quality control team's mission is to respond to those needs.

Extravega's collective experience, knowledge, research, and passion are distilled to serve the customer's wishes: a beautiful project to exacting standards.

Through hard work and communication, we build together with our customers.



OGGETTO - Object Baron Capital Stair		COMMESSA - Job n° 3273	DESCRIZIONE - Description Glass Stair
APPROVATO DA - Approved by		DISEGNO N° - Drawing n° 3273-E16	
		SCALA - Scale VARIES	
00	12/12/14	UNITA' DI MIS - Units mm/in	
Rev.	DISEGNO DA - Design by	DATA - Date	
		TOLL. GEN - Tolerance	UNI EN 12278 1-2

EXTRAVEGA SRL
VIA P. NERVI 9 - 08037 PADERNO S. GEMINO (NO) - Italy
WWW.EXTRAVEGA.COM





MATERIALS & INNOVATION

Extravega offers designers several solutions in their choice of wood, metals, glass, and liquid metals.

Our continuous research yields new technologies and innovations. One such breakthrough has been with liquid metals. The customization in art, architectural and design projects through this medium is near limitless.

This revolutionary and unique product covers surfaces and materials such as wood, MDF, plasterboards, glass, cement, paper, plastic, polyester, fabrics.

The proposed finishes, incredibly varied in number, add a distinct aesthetic impact to any final product.

“In the last years many companies have tried to imitate these exclusive and elegant finishes, but the absolute superiority of our liquid metals and the real feeling of preciousness, the same sensation you have when you hold a jewel in your hand, will be evident for whoever will have the fortune to touch our original pieces”.

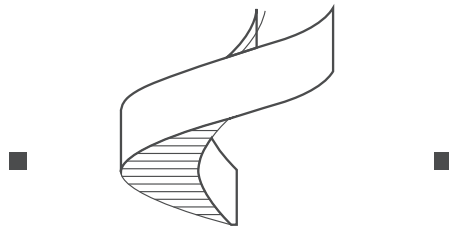
Antonio Rillosi
Founder and CEO



PROJECTS







SPIRAL GLASS STAIRCASE

BARON CAPITAL
DESIGN BY GENSLER

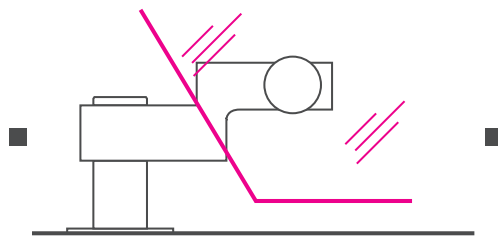
NEW YORK, USA - 2016



General Motors Building, 49th floor. Spiral glass staircase, suspended from ceiling. In collaboration with Gensler, the clients sought a stunning centerpiece for their new office, forty-nine floors above Manhattan's streets. A glass staircase. The design was a challenge. Less support. More details. And suspended a half inch off the floor. We have never seen nor fabricated a staircase more technically difficult to execute.



BY EXTRAVEGA
Site Survey & 3D Scan
Material & Tech Briefing
Engineering
Supervising & Installation
Products Certifications
International & Local Logistics
On Site Management
Maintenance Service



THE DETAIL

40,000 pounds hung up to the 50th floor with only 7 rods but seemingly weightless, the staircase hovers a half inch from the floor. Its full support rests from the system above.



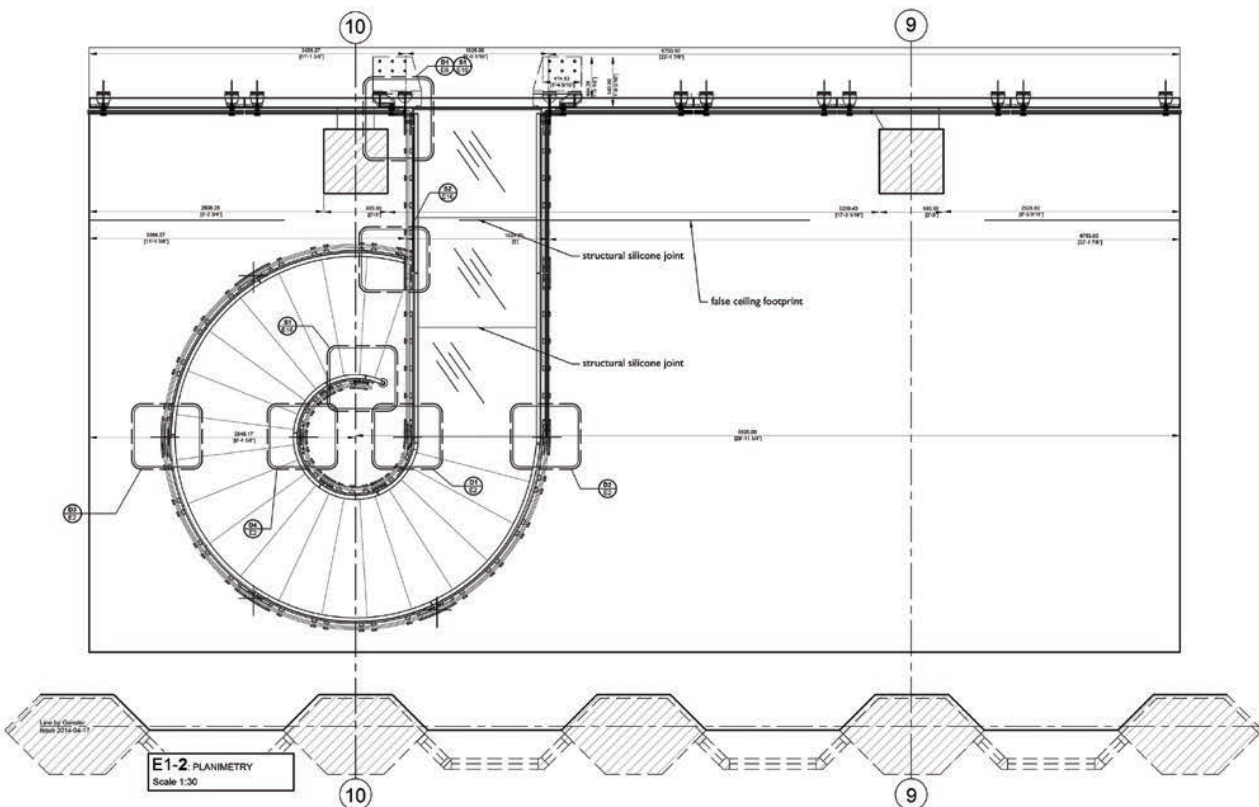
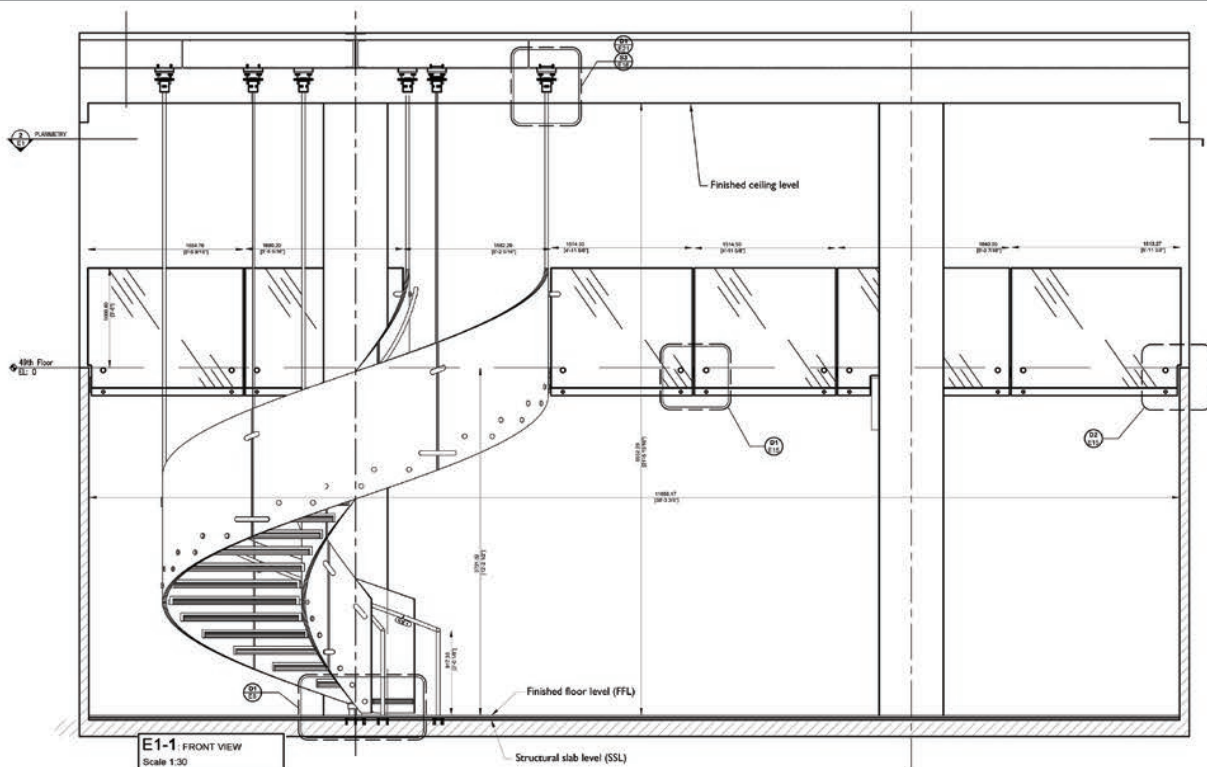
Spiral staircase of structural glass
without base support.

Below:
twenty steps with a bridge 18 feet long.

Opposite page, from top:
accessories and hardware in brushed duplex
stainless steel, the strongest stainless steel
in the world; staircase supported by seven
steel tie rods fixed to the beams of the
fiftieth floor.



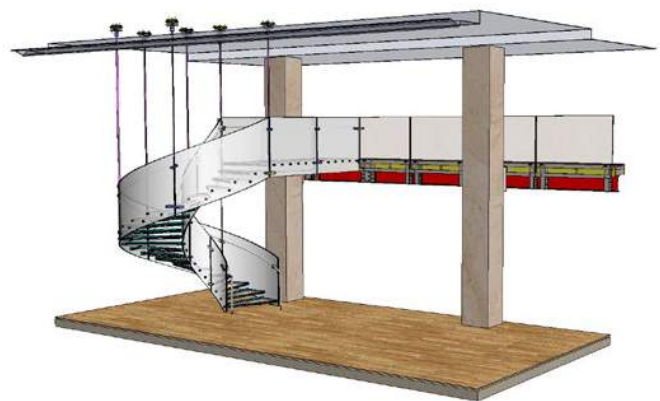
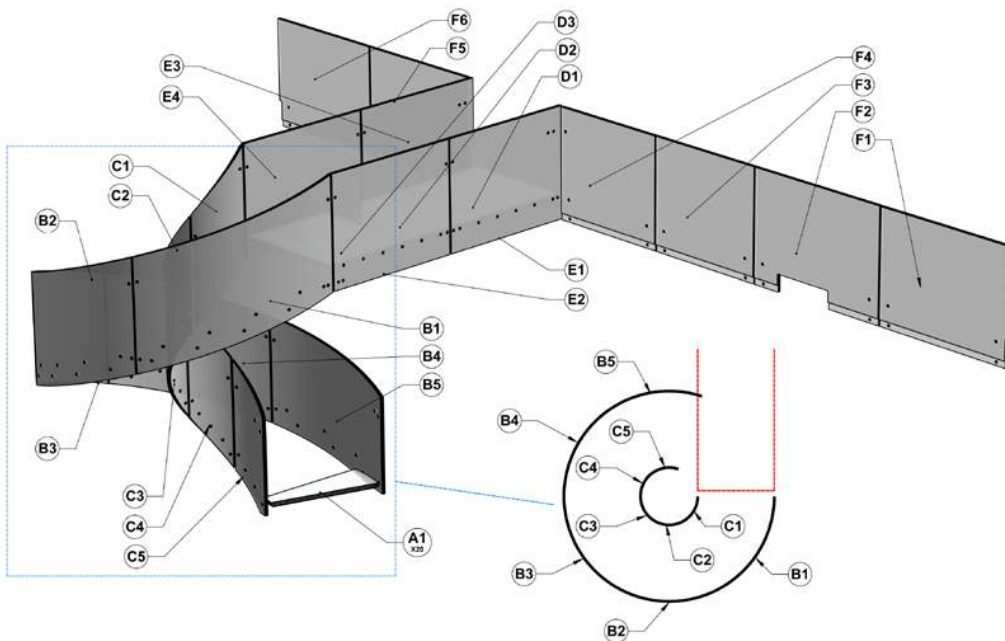
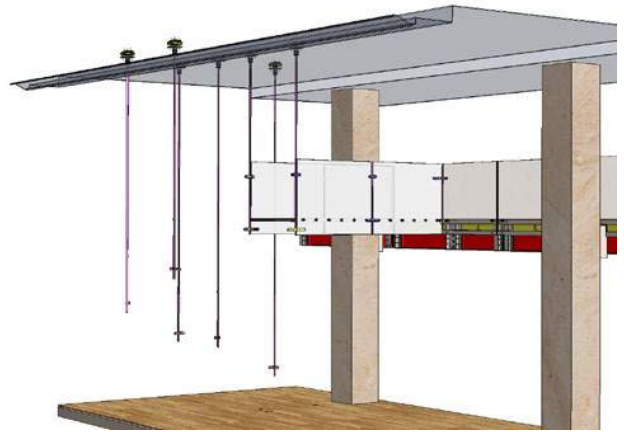




OGGETTO - Object	CORPRESSA - Job n°	DESCRIZIONE - Description
Baron Capital Stair	3273	Glass Stair
APPROVATO DA - Approved by	DISEGNO N° - Drawing n°	
	3273-EI	
	SCALA - Scale	
	LIVELLO DI PREL. - Units	
01		

EXTRA VEGA
ARCHITECTURAL FABRICATIONS

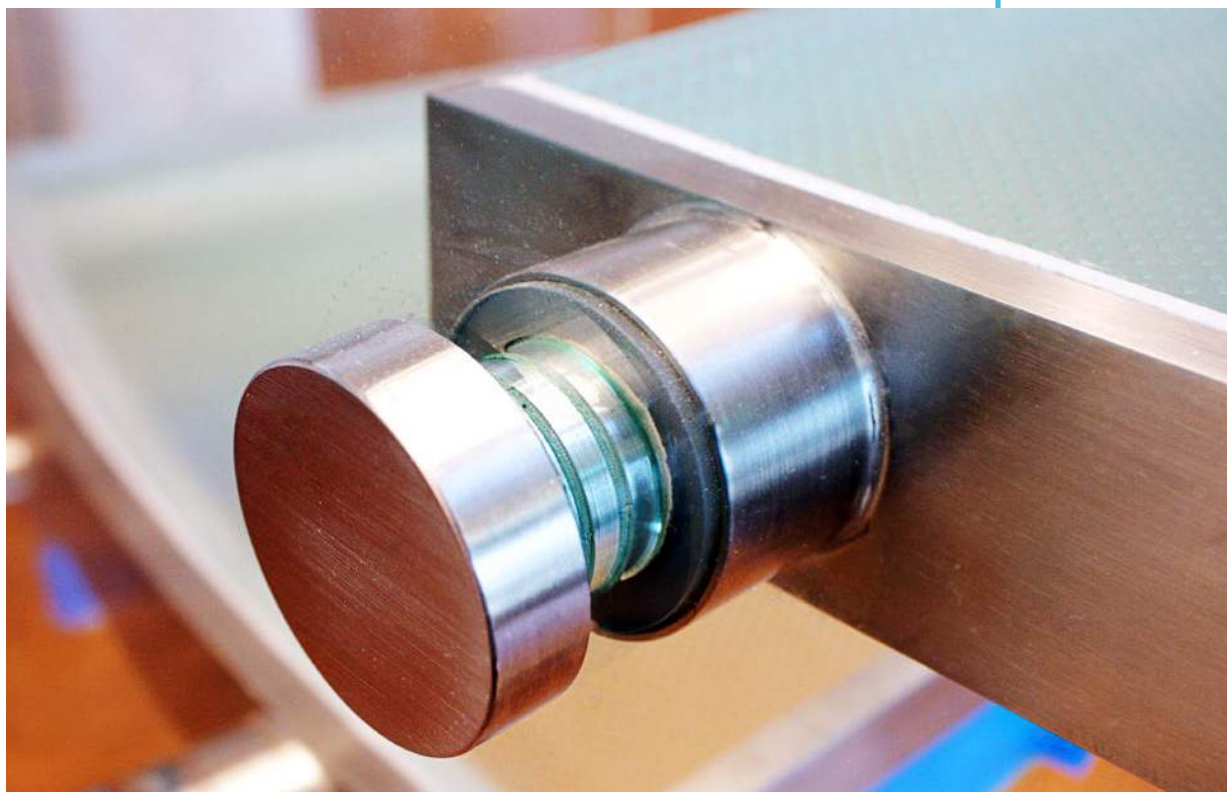




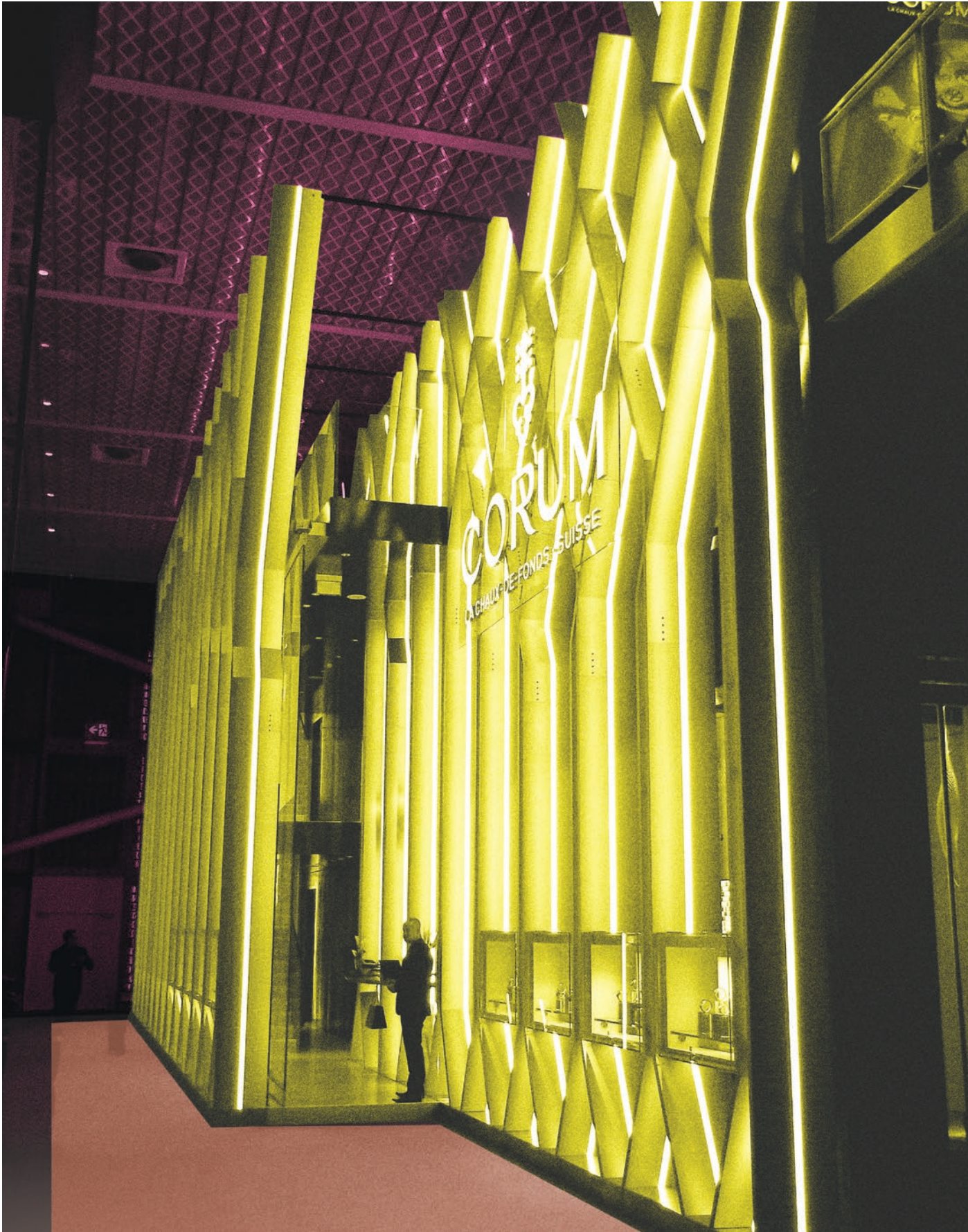
Technical details for stairs support system suspended and anchored to the ceiling.

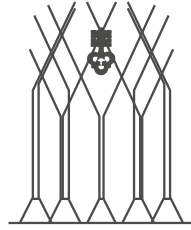


Custom made accessories in
brushed duplex stainless steel,
the strongest stainless steel in
the world.









HAUTE HORLOGERIE SHOW

MONTRES CORUM STAND
DESIGN BY PIERRE STUDER

BASELWORLD, SWITZERLAND - 2013



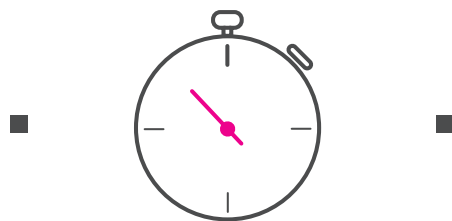
Montres Corum, in 2013, completely reimagined their presence at Baselworld. Their stand at this most prestigious and renowned luxury watch exhibit was a complete breakthrough in innovation and design.

With 25 illuminated columns of 34 feet high, three floors, an inside restaurant, bar and private meeting rooms, the new space will be mounted and dismantled until 2023.



BY EXTRAVEGA

Material & Tech Briefing
Site Survey & 3D Scan
Engineering
Supervising & Installation
Products Certifications
International & Local Logistics
On Site Management
Maintenance Service



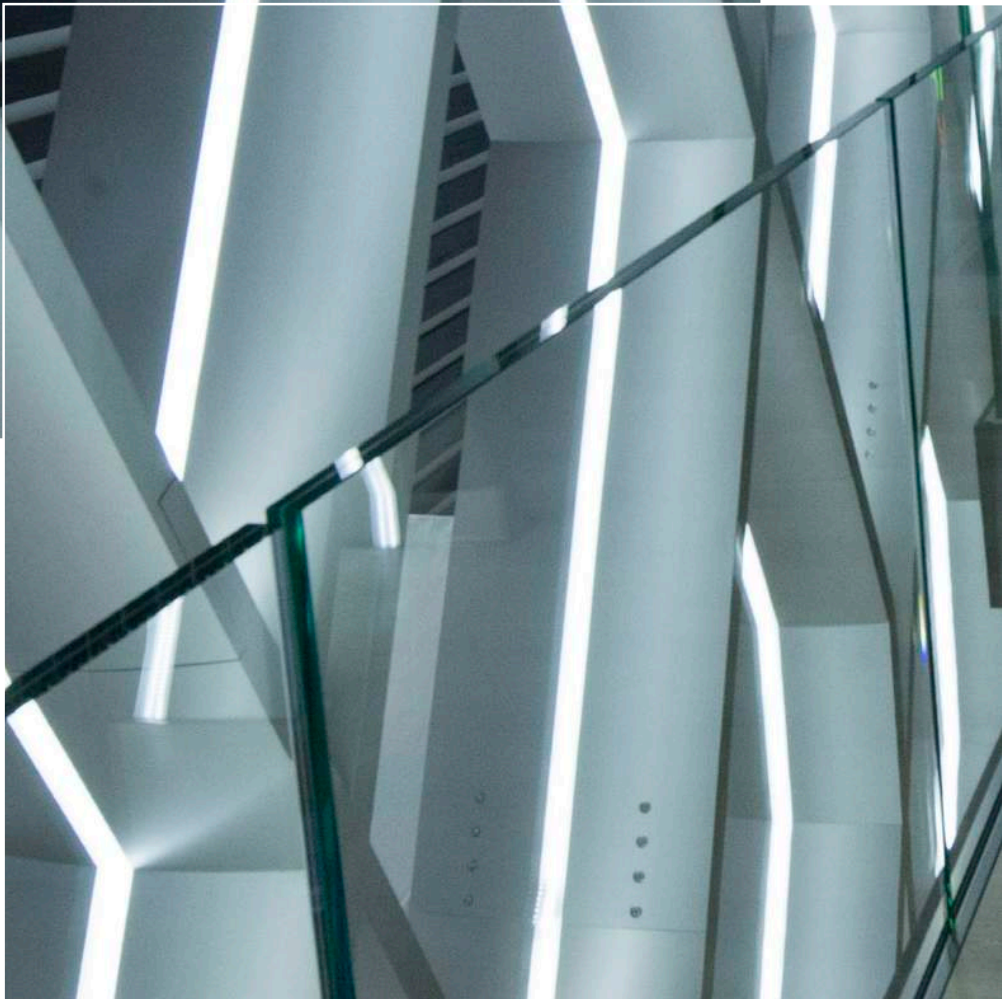
THE CHALLENGE OF TIME

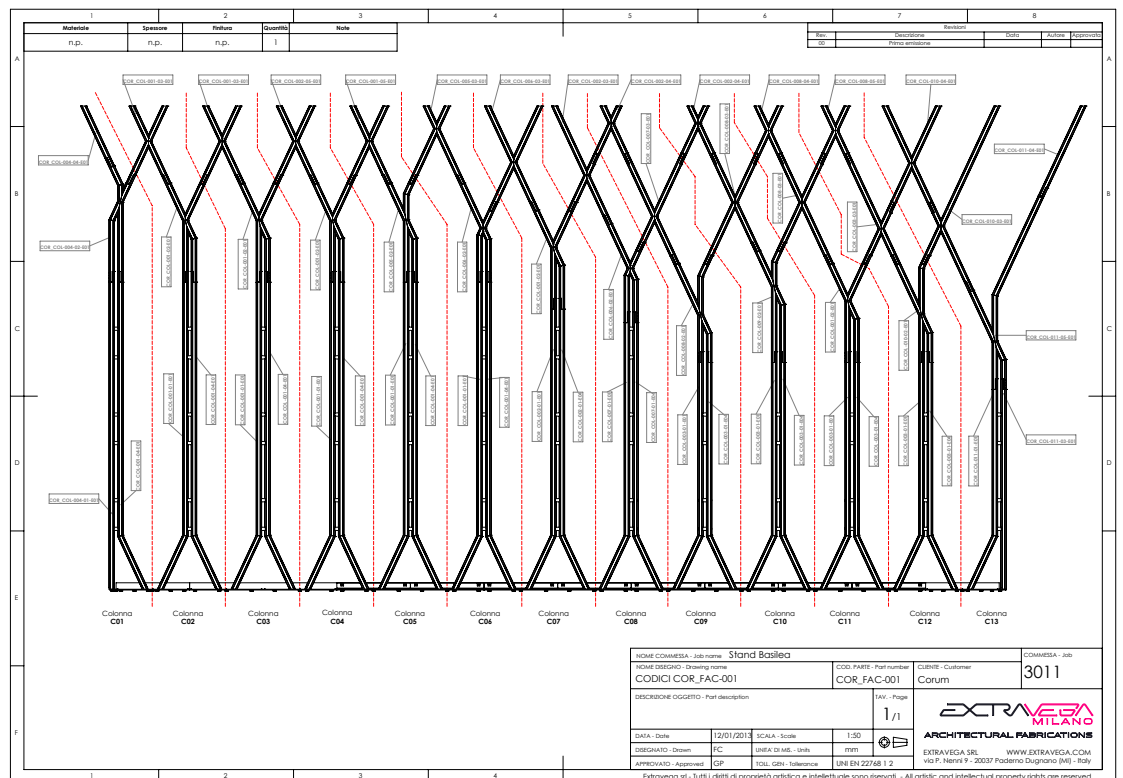
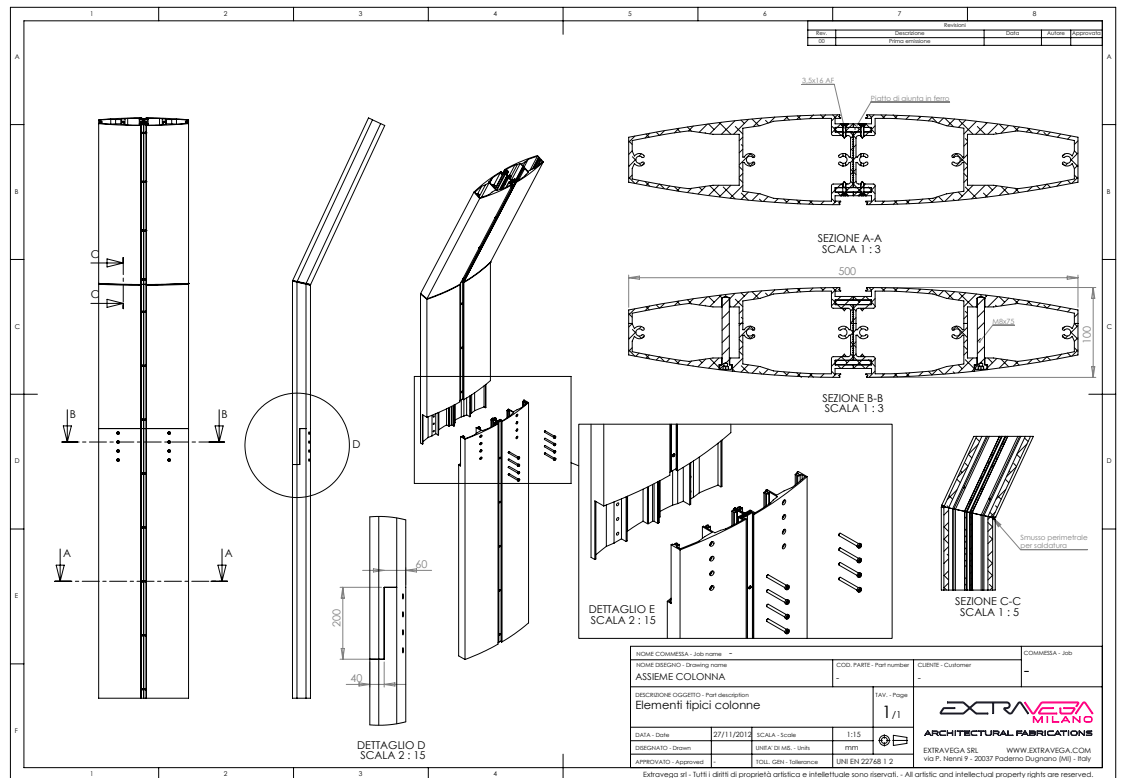
The Corum stand needed to be ready for the fair. Period. The team worked tirelessly for 14 weeks to complete the complex – and elegant - job on an aggressive timeline.



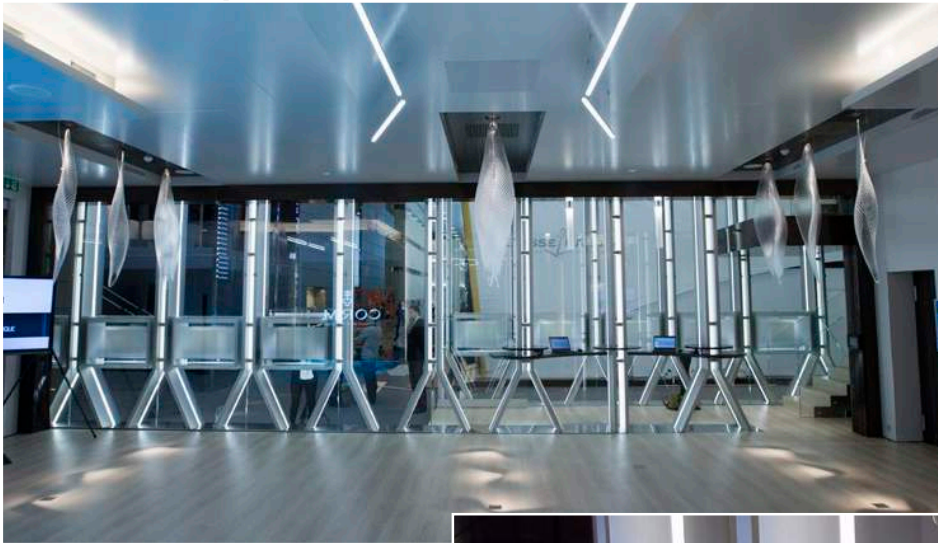








Produced with two massive iron staircases, each staircase is realized in one entire piece, covered with wood, and glass railings.



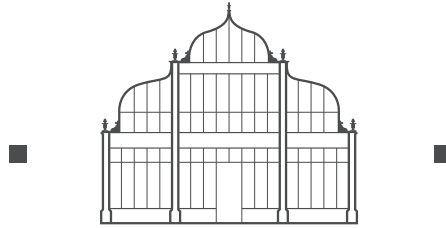
From top:
modular façade, 34 feet high with 2
custom glass doors.

The façades' 25 columns are illuminated
by about 3,200 linear feet of LED lights;
9 glass displays located between the
columns, including custom made locks
and keys.









LUXURY WELLNESS CENTER

ASHFORD CASTLE
DESIGN BY PHILIPPE BONINO

CONG, IRELAND - 2015



Philippe Bonino, project designer, interprets the wellness center as an accessory perfectly matched to the design of the Irish stronghold.

Elegant gothic style arches, bronzed aluminum profiles and insulating glass are in harmony with the wellness center's luxurious care for its guests.



BY EXTRAVEGA
Material & Tech Briefing
Site Survey & 3D Scan
Engineering
Supervising & Installation
Products Certifications
International & Local Logistics
On Site Management



THE CHALLENGE OF THE ENVIRONMENT

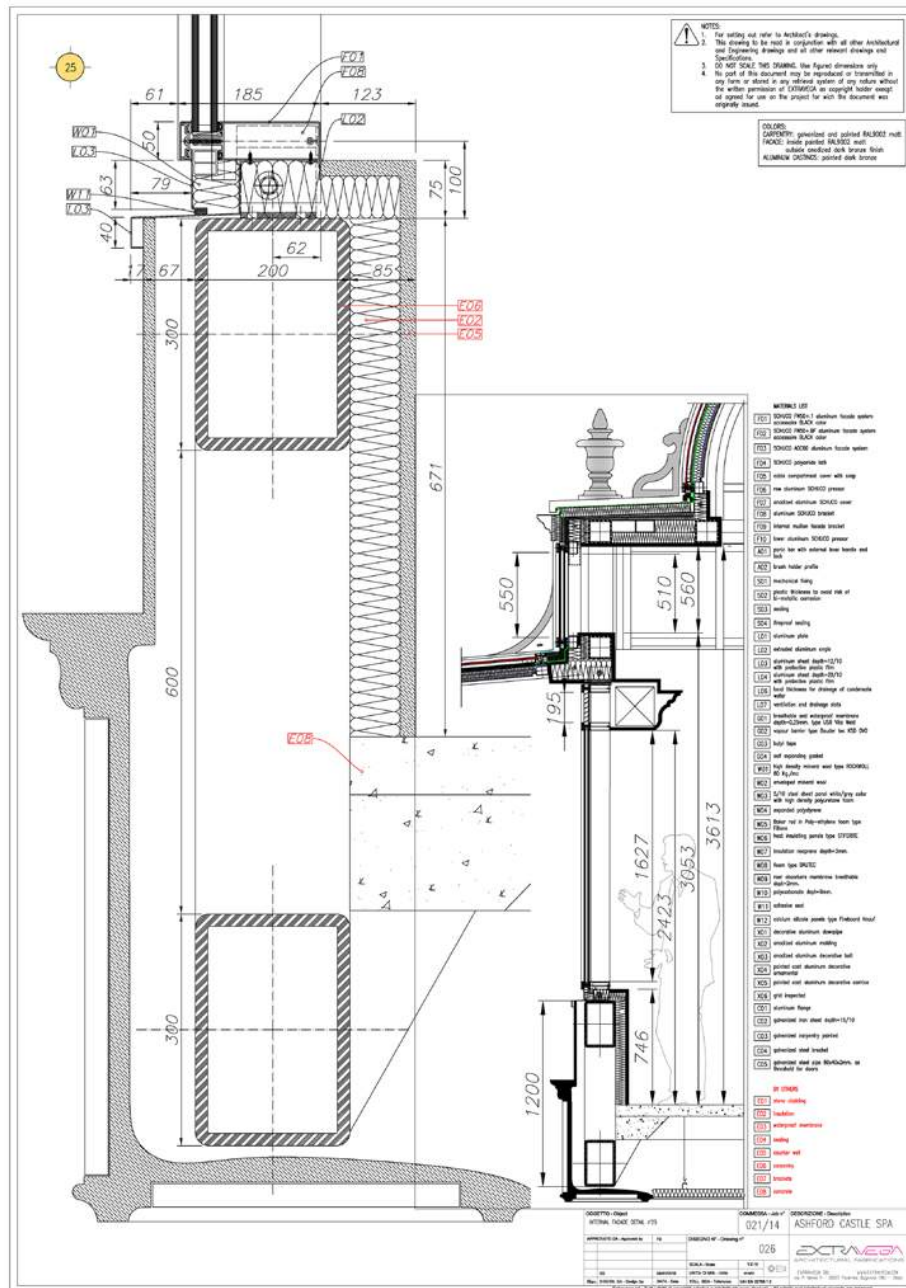
Wet, rainy and ever-changing weather fronts in the Irish countryside present opportunities for creative planning. For our hotel client, our team worked day and night, to mitigate the weather conditions and meet the deadline for the center's opening.



Production and installation of bronzed aluminum profiles; structure with Gothic style arches and Gothic elements made in bronze.

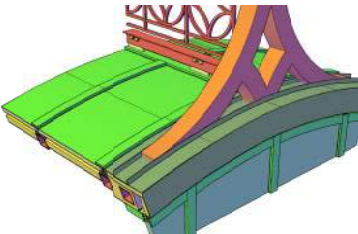
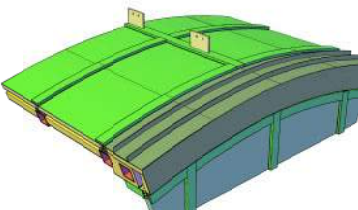
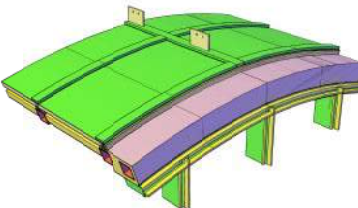
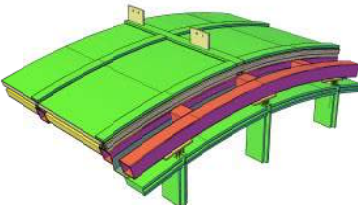
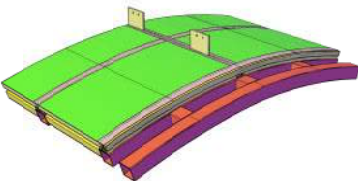
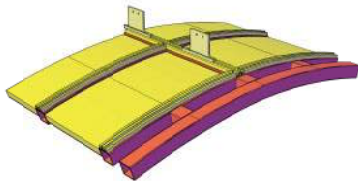




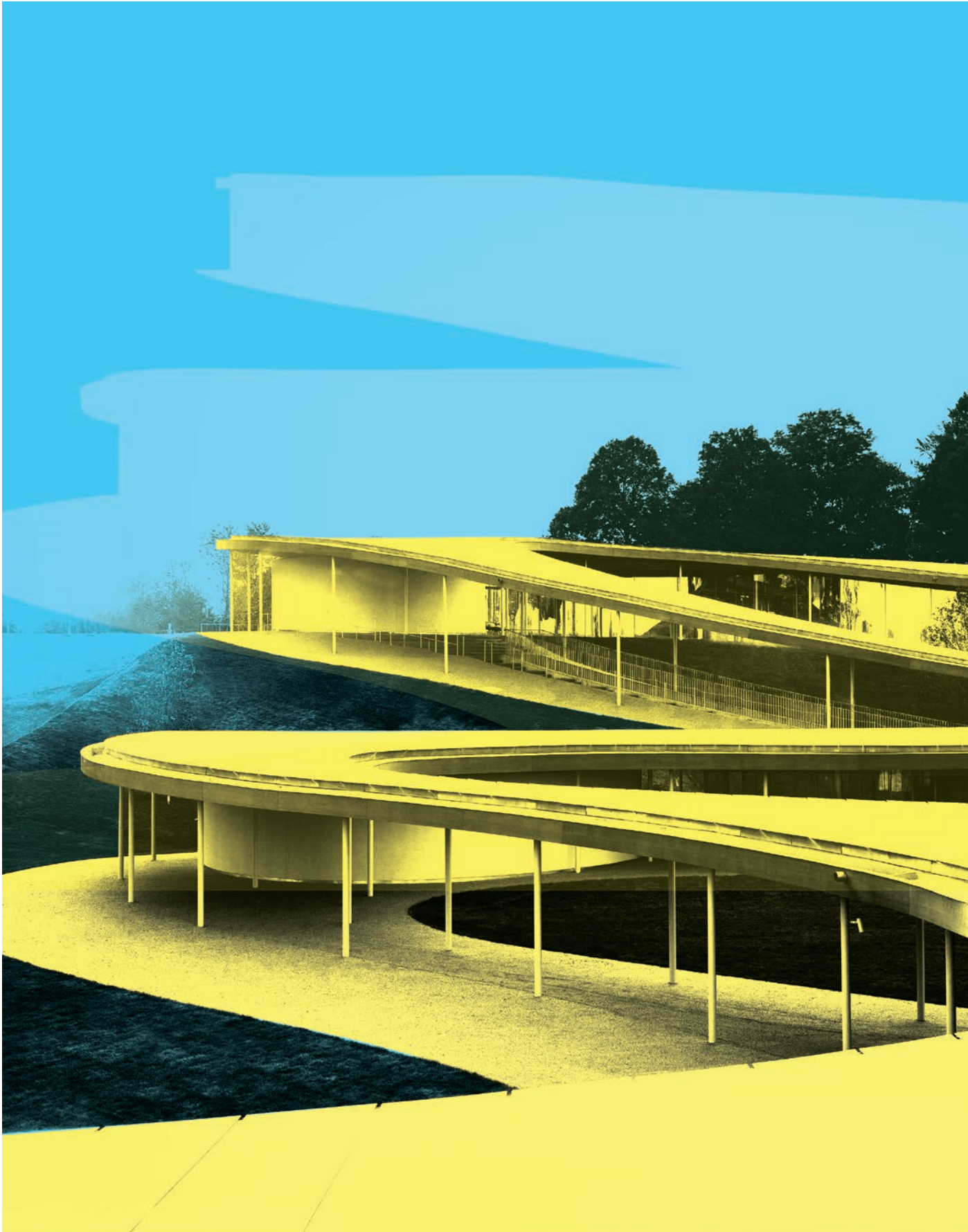


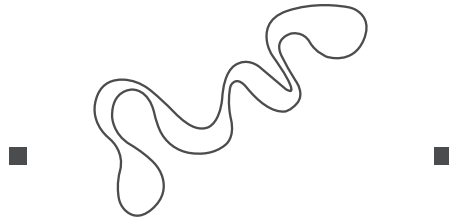


Production sequence



Aluminum structure for wellness center
with bespoke insulating windows and
entrance door with special privacy glass.





ENCLOSING THE RIVER

GRACE FARMS
DESIGN BY SANAA

NEW CANAAN, USA - 2015



Sanaa, a Japanese architecture studio, designed “River Building”, a multipurpose facility. Conceived as an idealized river, the intervention puts the viewer in direct contact with nature.

The structure snakes along the hill’s slope with a series of loops and curves. To install the 40 custom curved glazed doors and glass entrance lobbies was the brief for Extravega.

Each door with a different radius tested the team’s full experience, knowledge and passion.



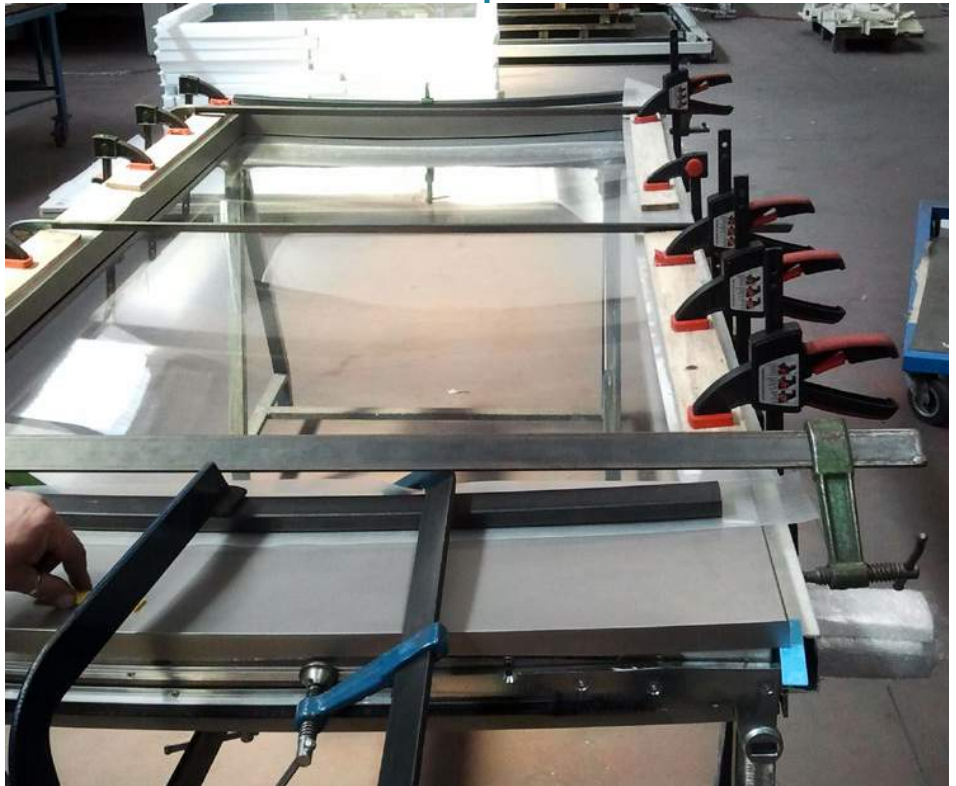
BY EXTRAVEGA

Material & Tech Briefing
Site Survey & 3D Scan
Engineering
Supervising & Installation
Products Certifications
International & Local Logistics
On Site Management
Maintenance Service



NOT ONE ALIKE

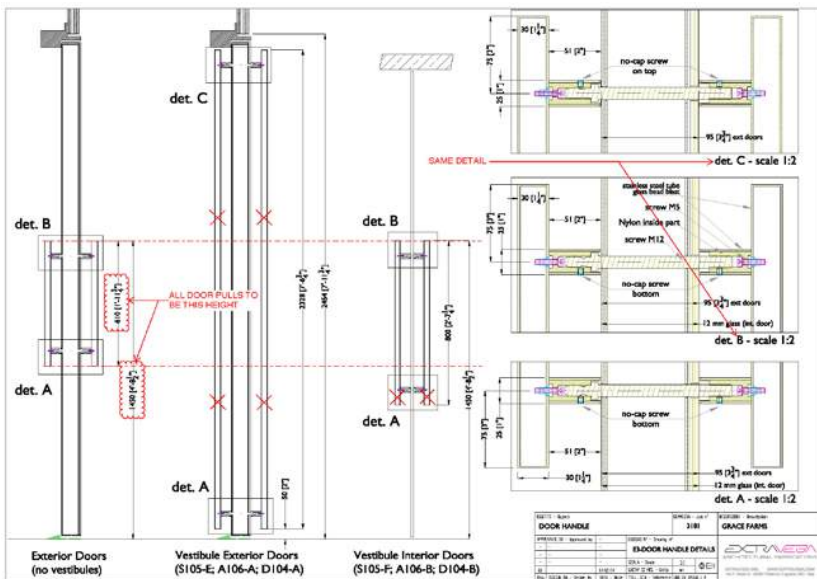
Each one of the 40 entrances is one of a kind. Each window, vestibule and door unit is unique with its own curvature and radius.



A view into the workshop where each piece of glass was crafted.







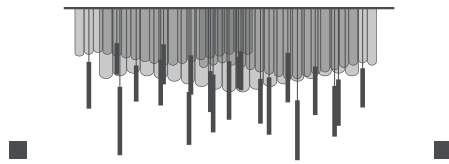
Grace Farms counts 40 curved glazed doors with glass vestibules. Each door has a different radius and glass vestibules.

All the doors close automatically. The hardware is custom. The accessories custom too, all to support an effortless transition between indoor and outdoor states.









JAPANESE RESTAURANT INTERIOR

NISHIKI RESTAURANT
DESIGN BY NAOS DESIGN

MILAN, ITALY - 2017



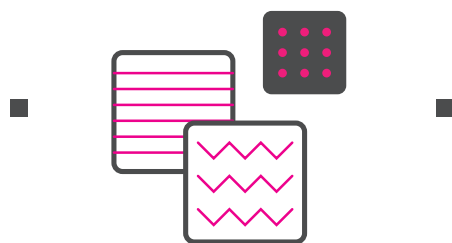
Naos Design Architectural Studio re-examines modern and deco styles with their renovation of a Japanese restaurant.

Nishiki reopens with an intimate and exclusive dining experience. The custom light installation beckons diners into the restaurant's halls to a relative space between New York and Shanghai. All details were realized with exacting care.



BY EXTRAVEGA

Material & Tech Briefing
Site Survey & 3D Scan
Engineering
Supervising & Installation
Products Certifications
International & Local Logistics
On Site Management
Maintenance Service



PRECIOUS MATERIALS

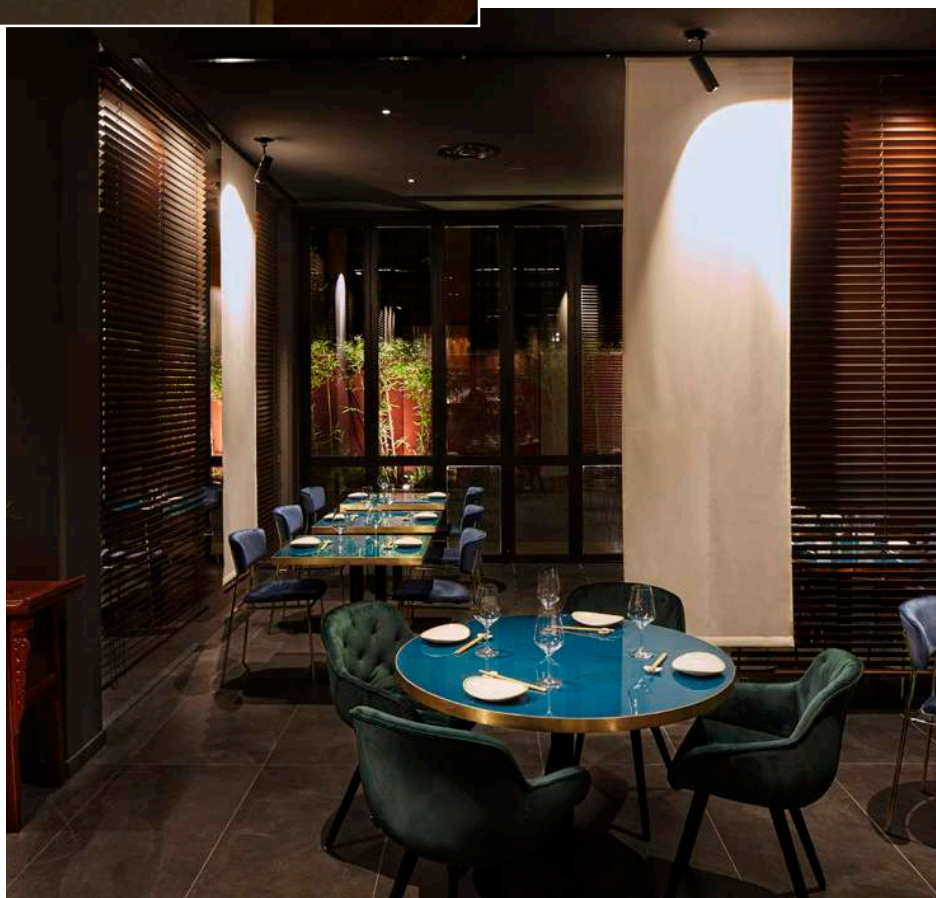
In design, the team flexed many different types of applications for varied material types: resin, parquet wood, glass-linen blends, velvet, brass, aluminum and metallic curtains.



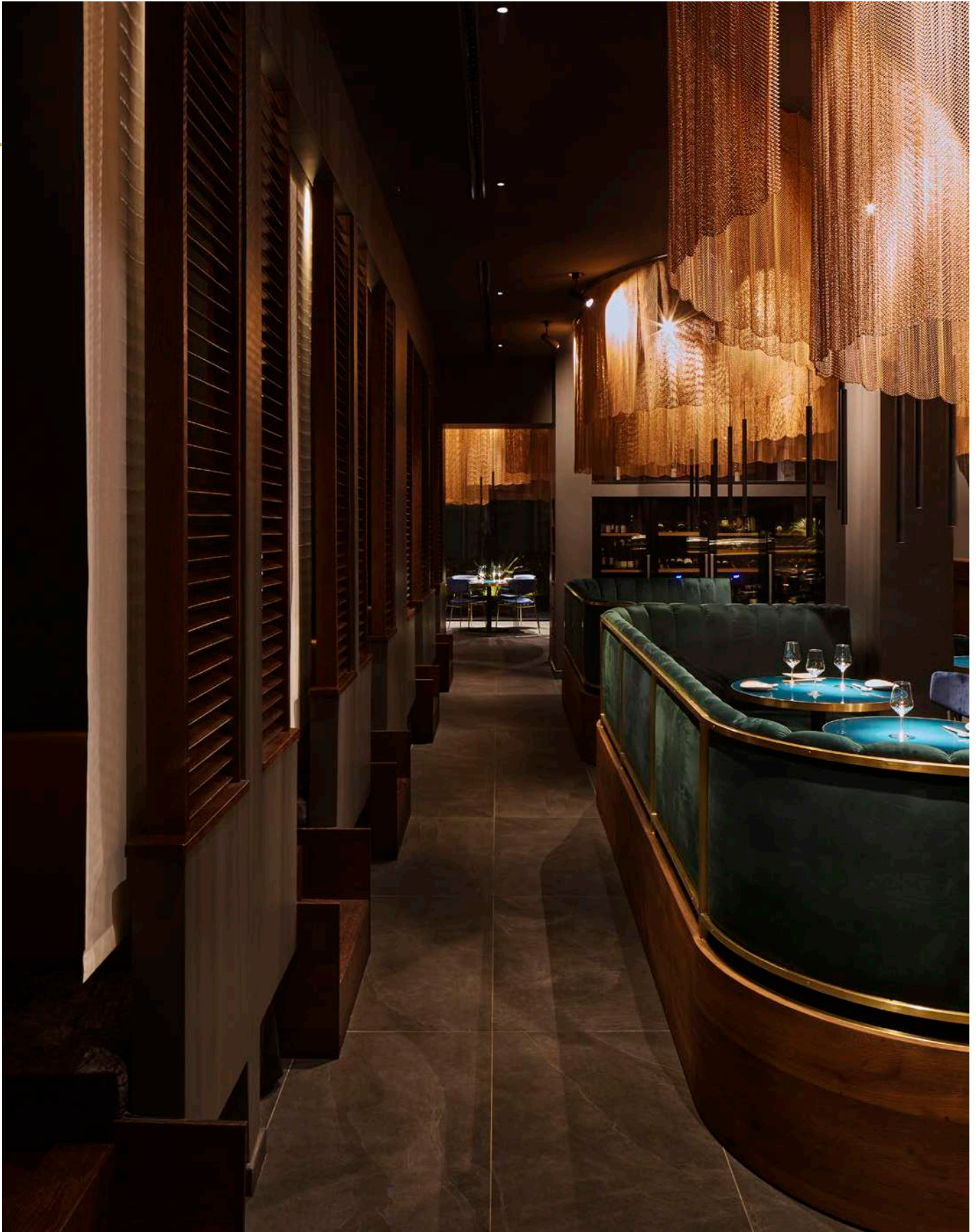




Bespoke tables and sofas with tubular brass structures. Venetian blinds for the privé, interior and entrance doors, and windows.

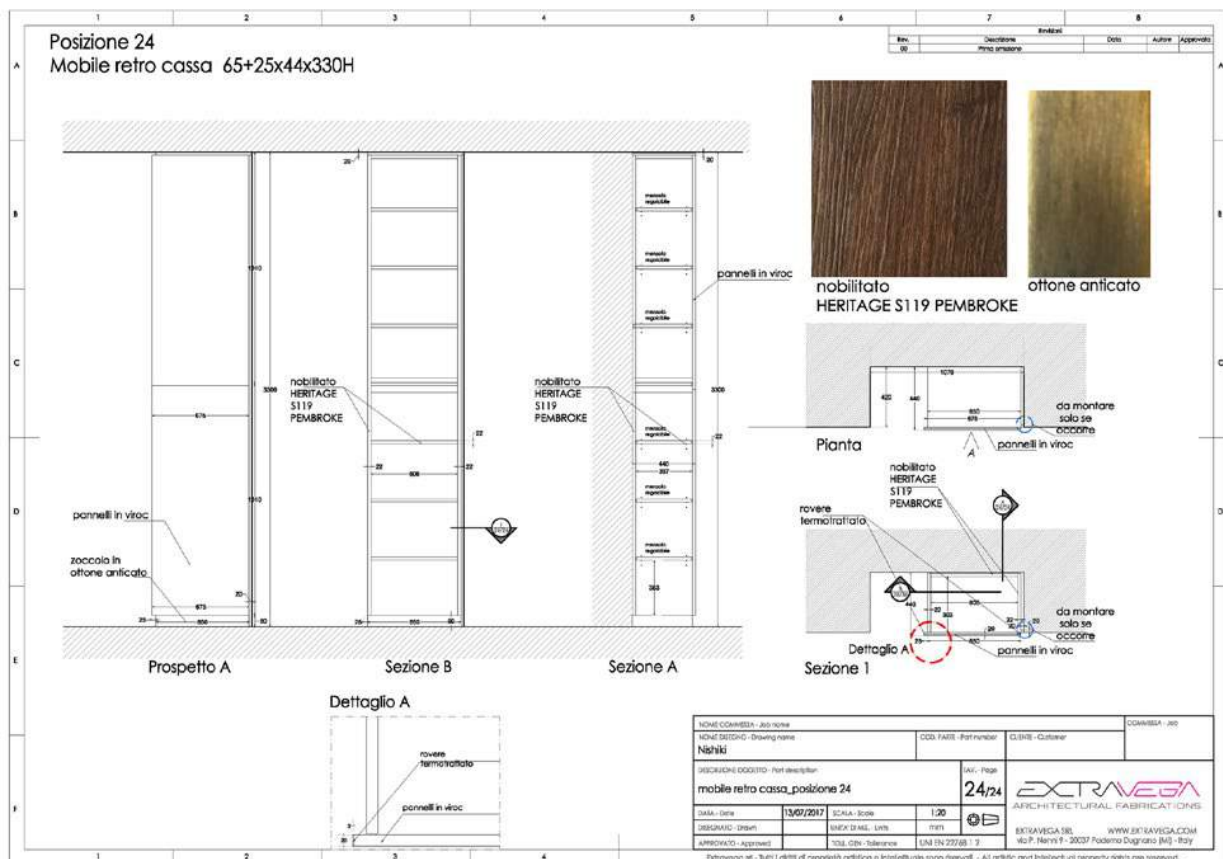
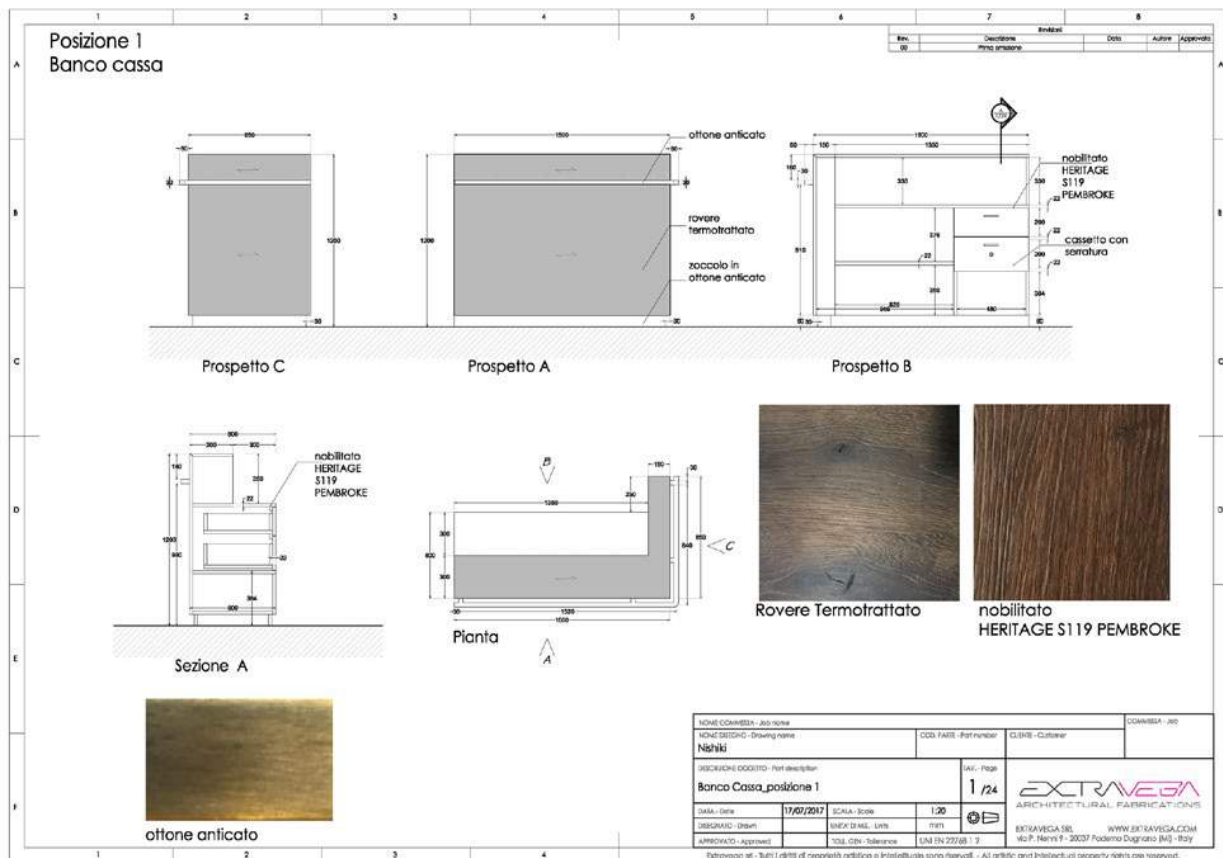




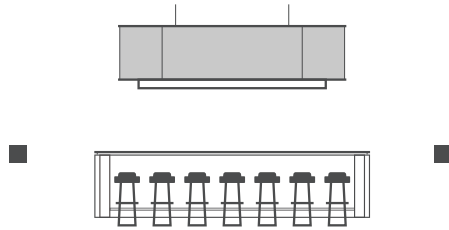




Metallic curtains made of metal mesh, bronzed finish, and fixed to a calendered profile.







BUSINESS & FASHION MEMBERSHIP CLUB

SPRING PLACE
DESIGN BY BLUARCH ARCHITECTURE

NEW YORK, USA - 2015



Spring Place is more than a posh, members-only club. It's an architecturally flexible, high-end space, spread over 140,000 sq-feet (13,000 sq metres).

Along with dedicated concierges, its facilities boast conference rooms, restaurant, bar and lounge area, music room and a lush, all-red private screening room. "A hangout space for young high-rolling creative elites, particularly those in the top tier of the art, fashion, film and design worlds" said Spring Place founders, Alessandro Cajarati Crivelli, Francesco Costa and Imad Izemrane.



BY EXTRAVEGA
Material & Tech Briefing
Site Survey & 3D Scan
Engineering
Supervising & Installation
Products Certifications
International & Local Logistics
On Site Management

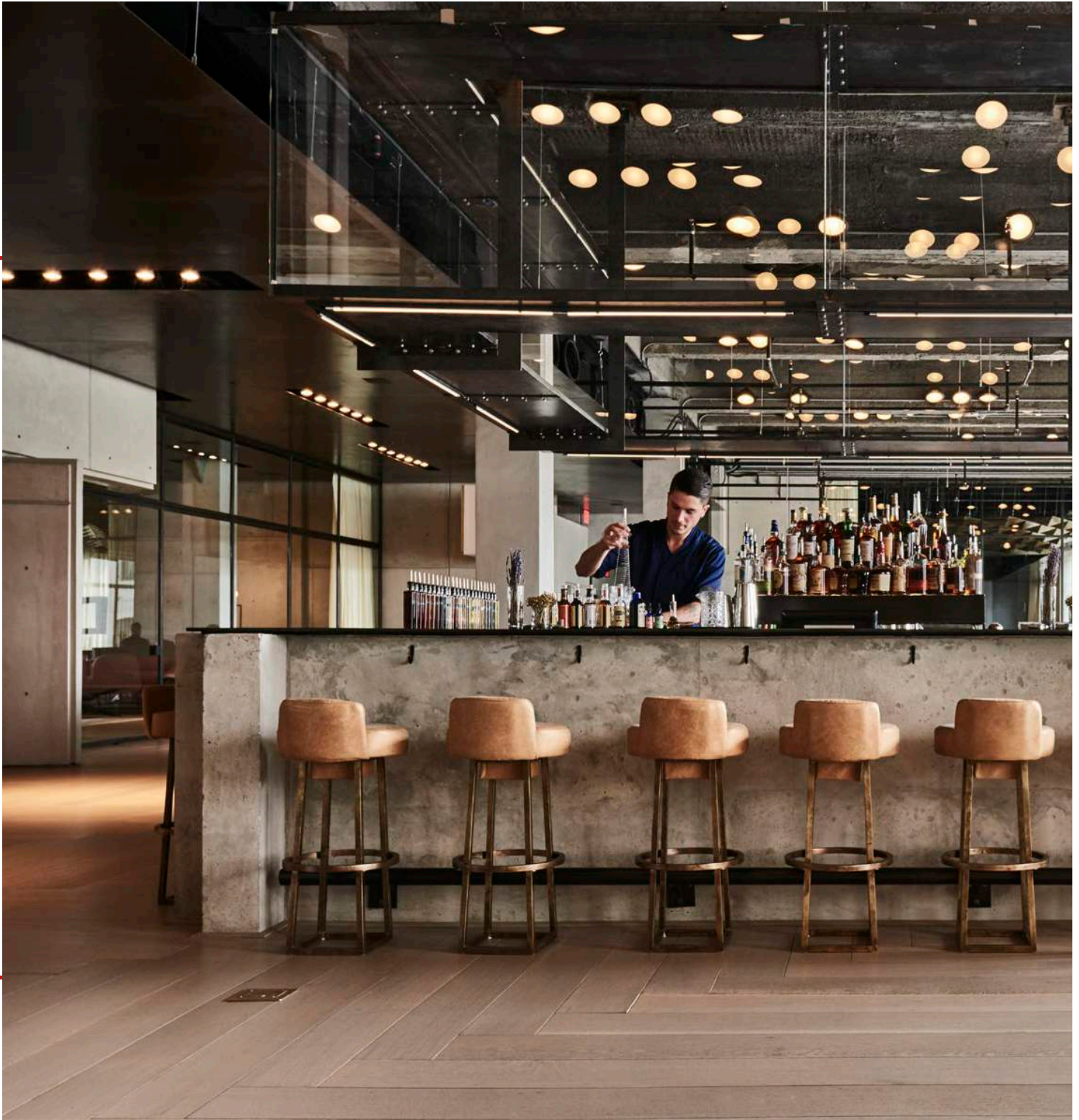


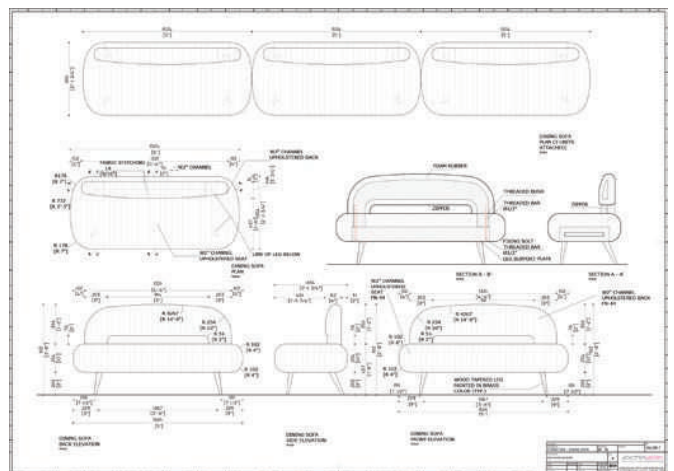
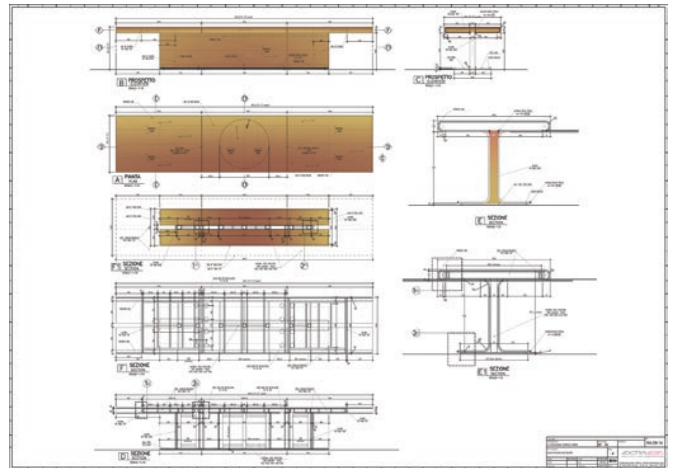
THE SHAPE

Extravega perfected a stunning oak wood table to match the intensity of the brutalist concrete shell that envelopes the club. The wood is pushed to its thinnest and finest self. A plasticity to complement the weightier concrete walls. Brass accents finish two barely visible edges set beneath its top and base.

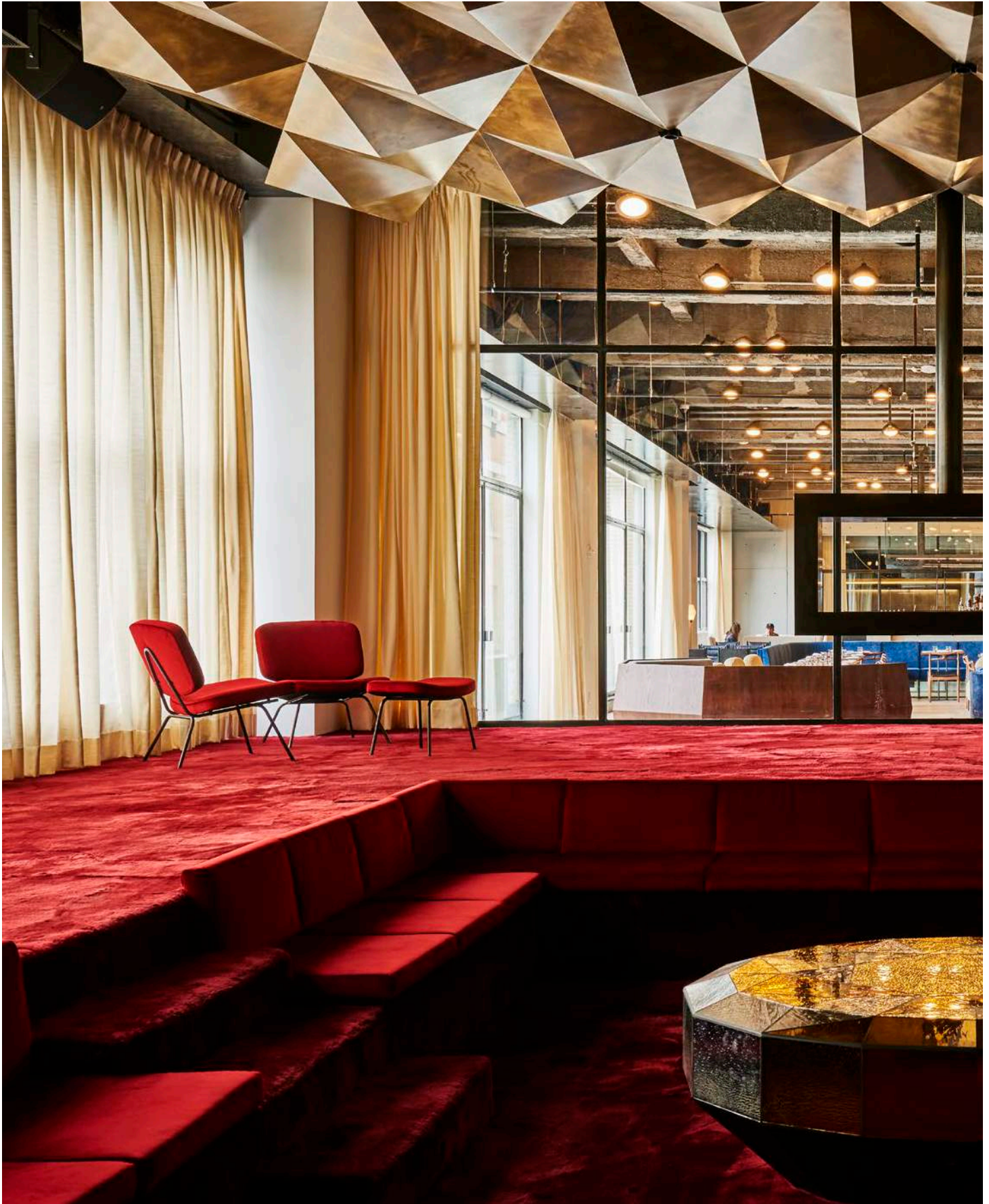


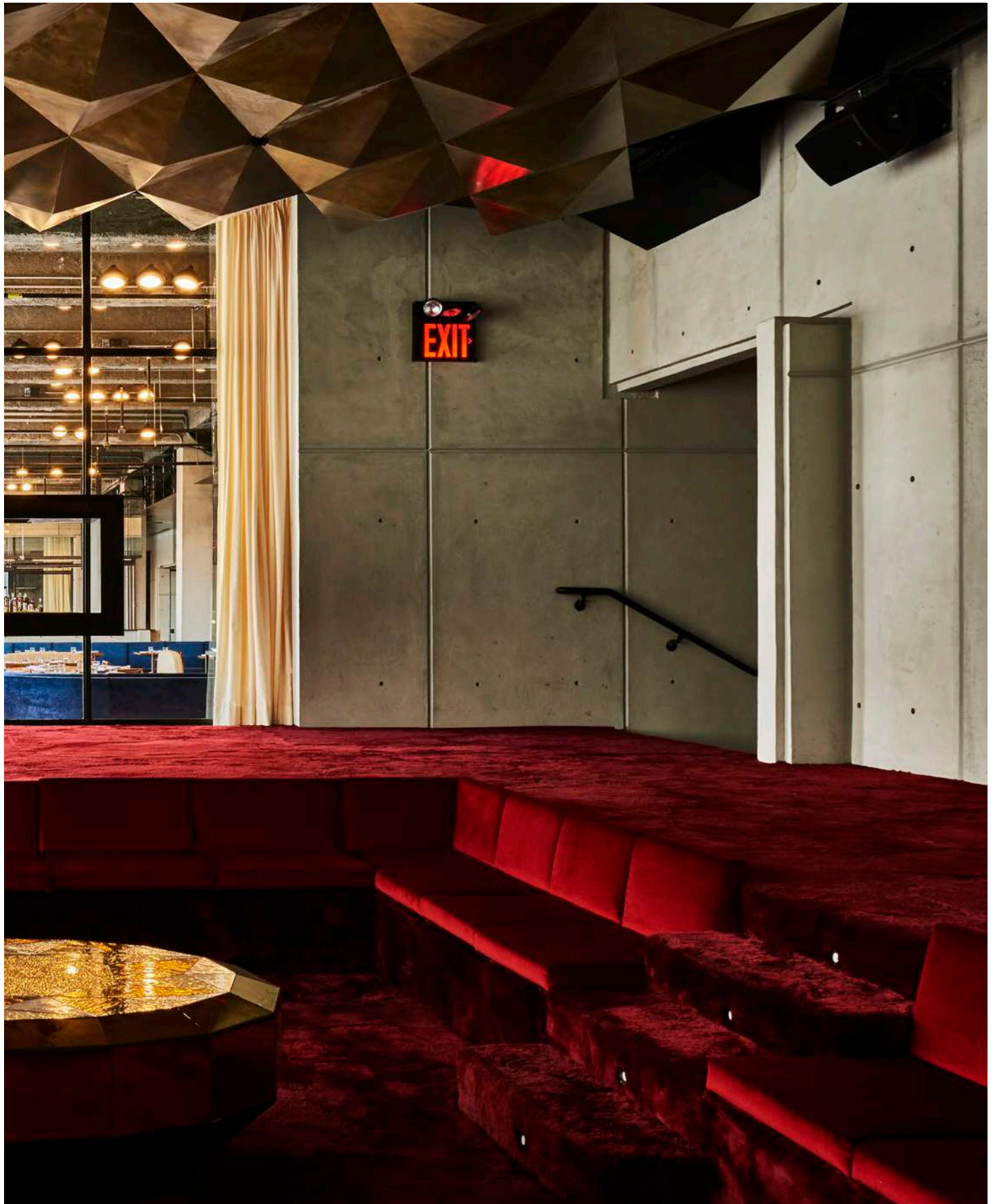
Custom meeting table design.





The whole restaurant area along with oak furniture, dining couches, leather bar stools, and bar was custom built for Spring Place.

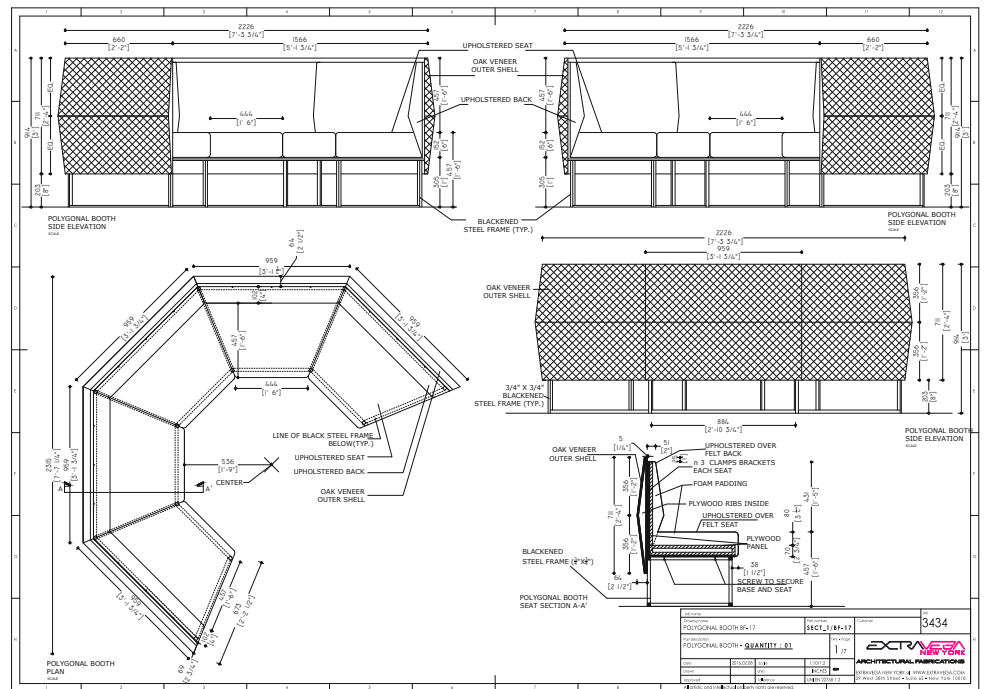






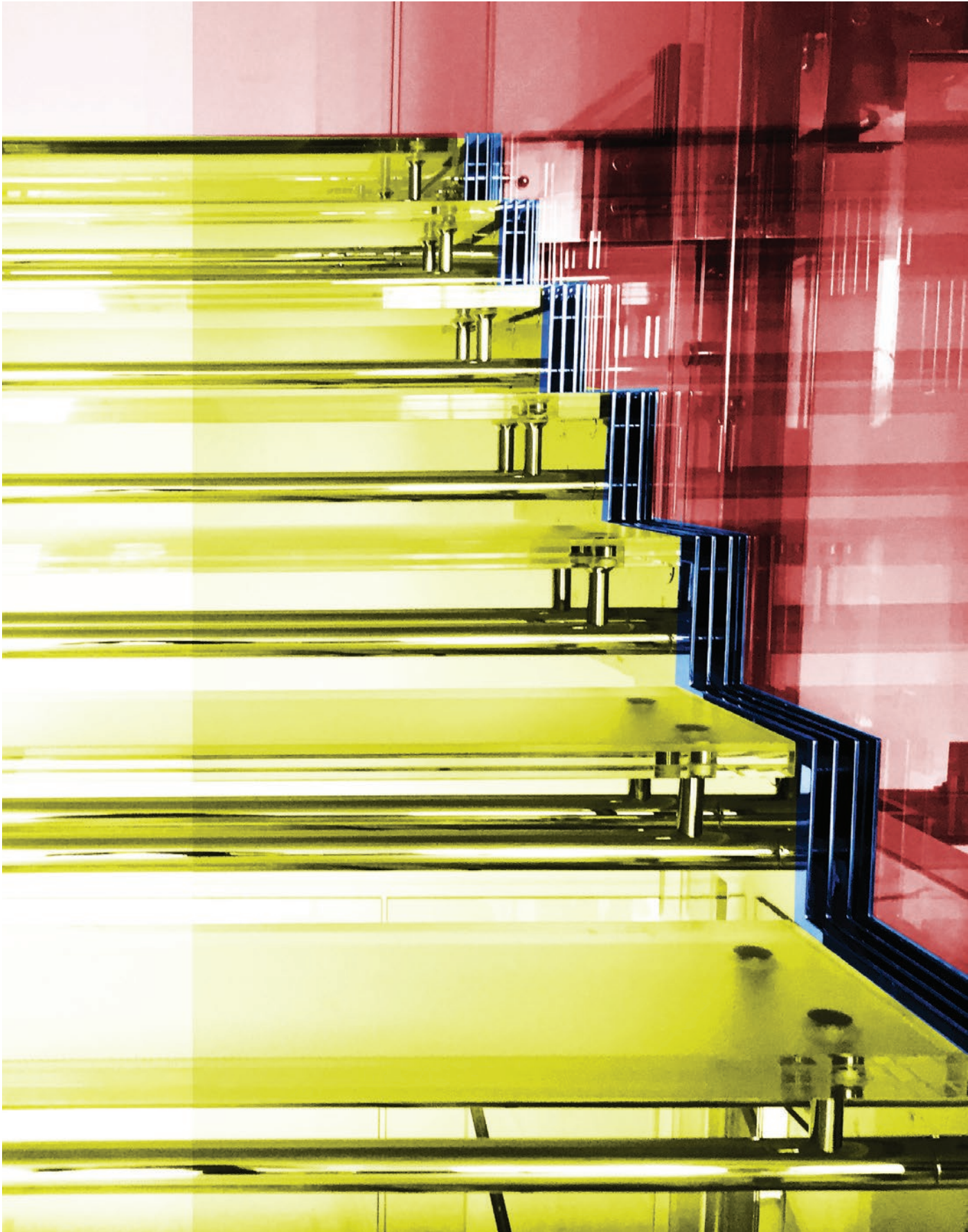
The architect's renders were faithfully followed to create exactly what they had envisioned.

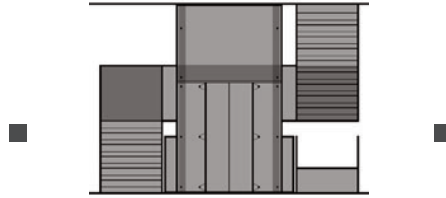












GLASS STAIRCASE AND LIFT TOWER

LAMBORGHINI
DESIGN BY MARCARCH DESIGN

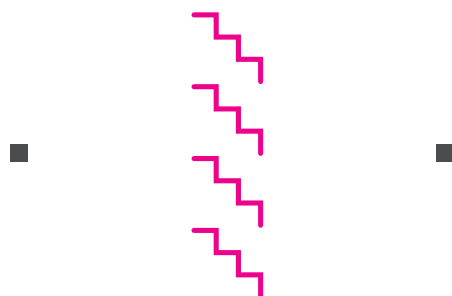
DUBAI, UAE - 2016



Lamborghini designed a custom four-story stair and lift tower for their largest showroom in the world. From extra clear glass and highly polished stainless steel, the stair achieves a technical mastery and impressive scale to match this iconic Italian brand's identity.

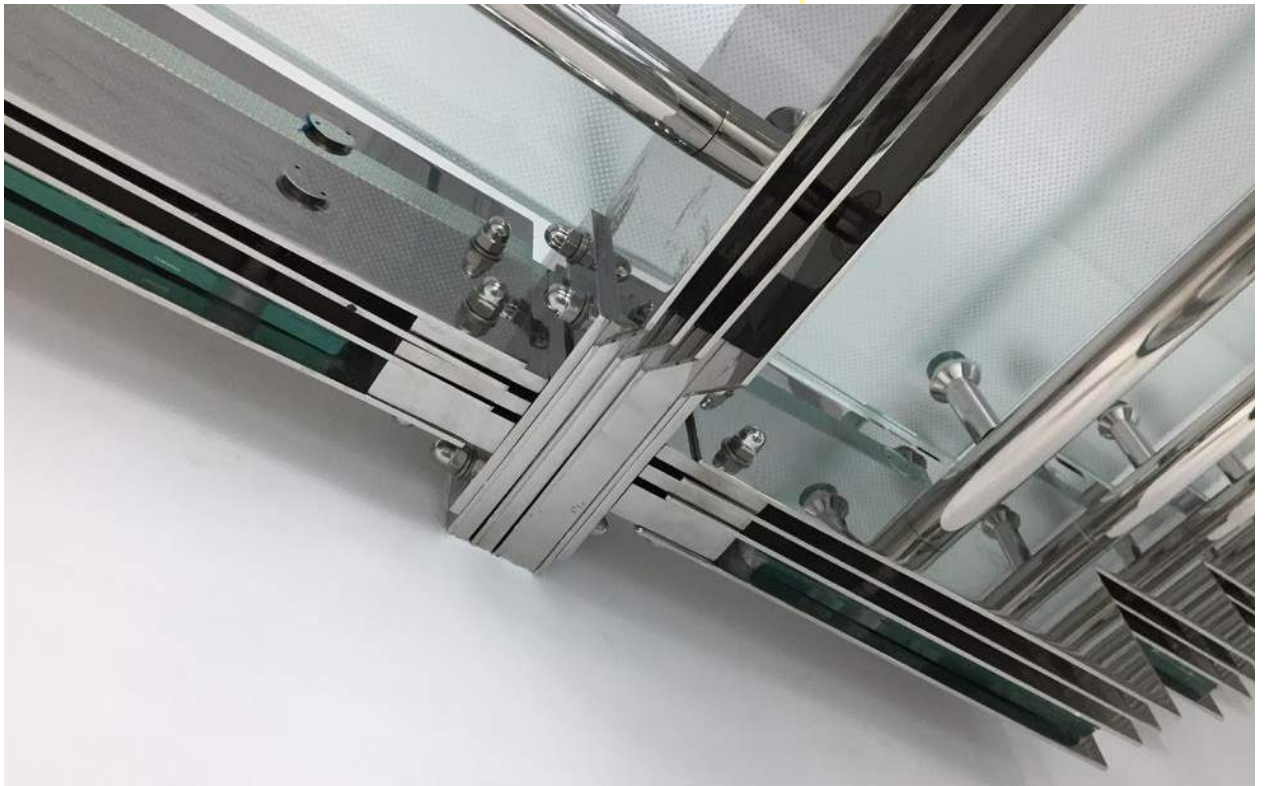


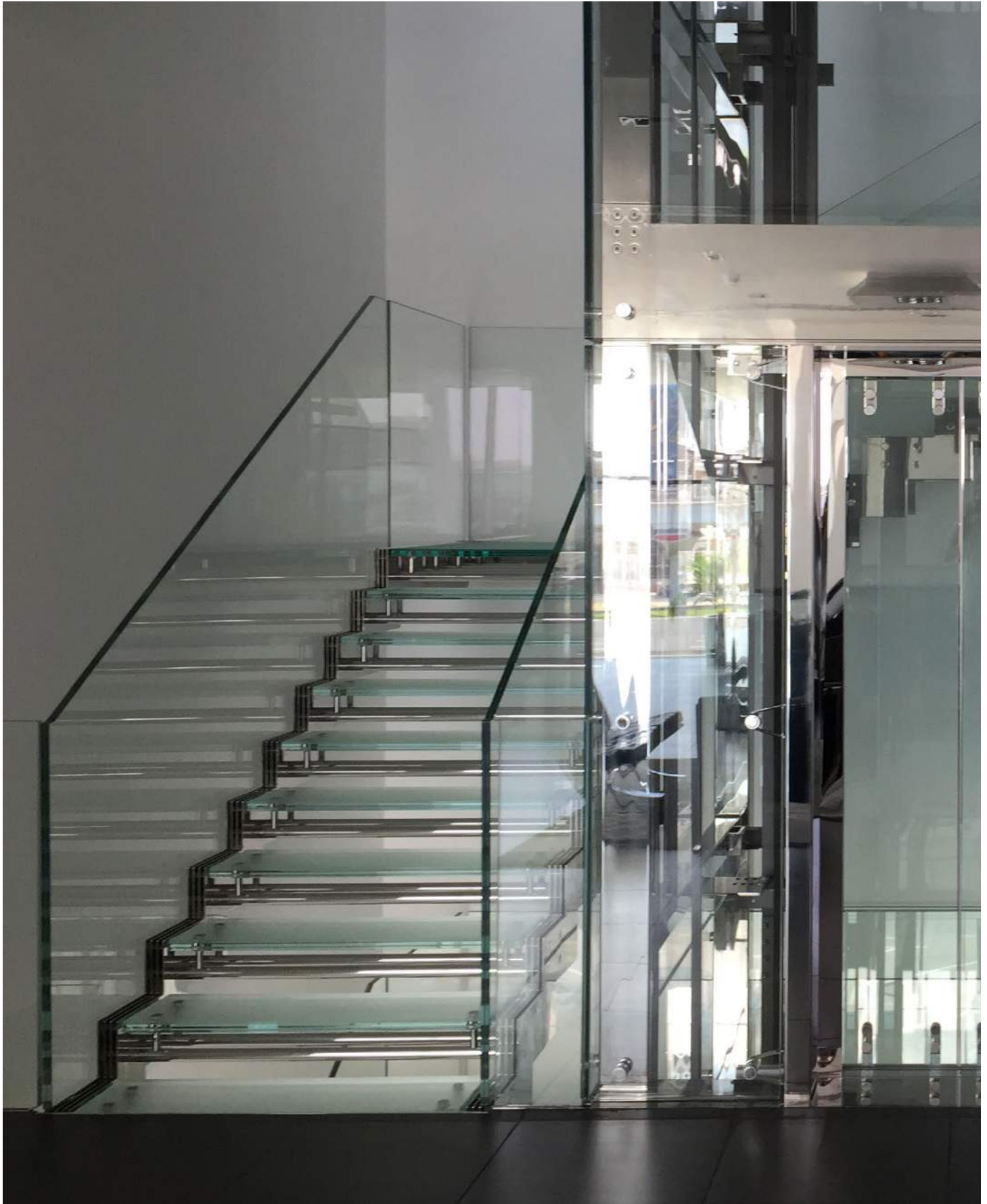
BY EXTRAVEGA
Material & Tech Briefing
Site Survey & 3D Scan
Engineering
Supervising & Installation
International & Local Logistics
On Site Management



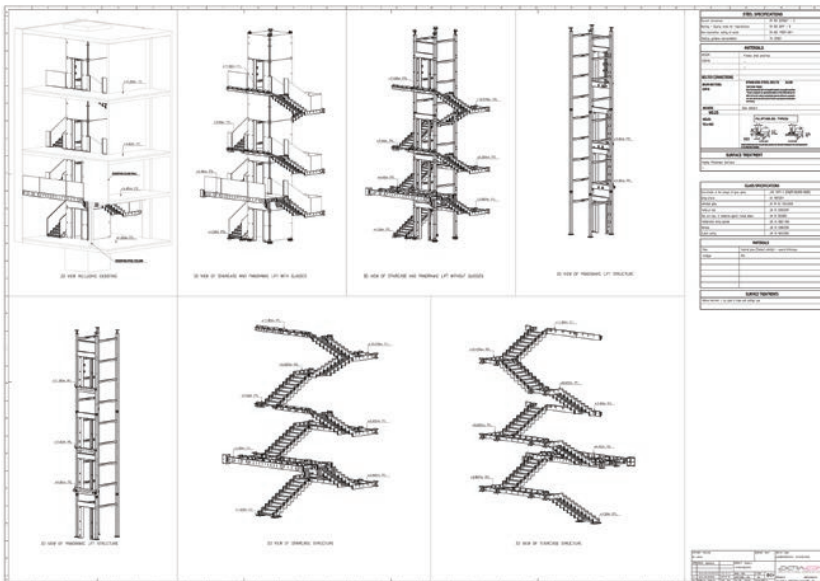
THE STRUCTURE

Structural stringers, divided in 4 single beams, in synchronicity with the staircase that spans four stories in the showroom.





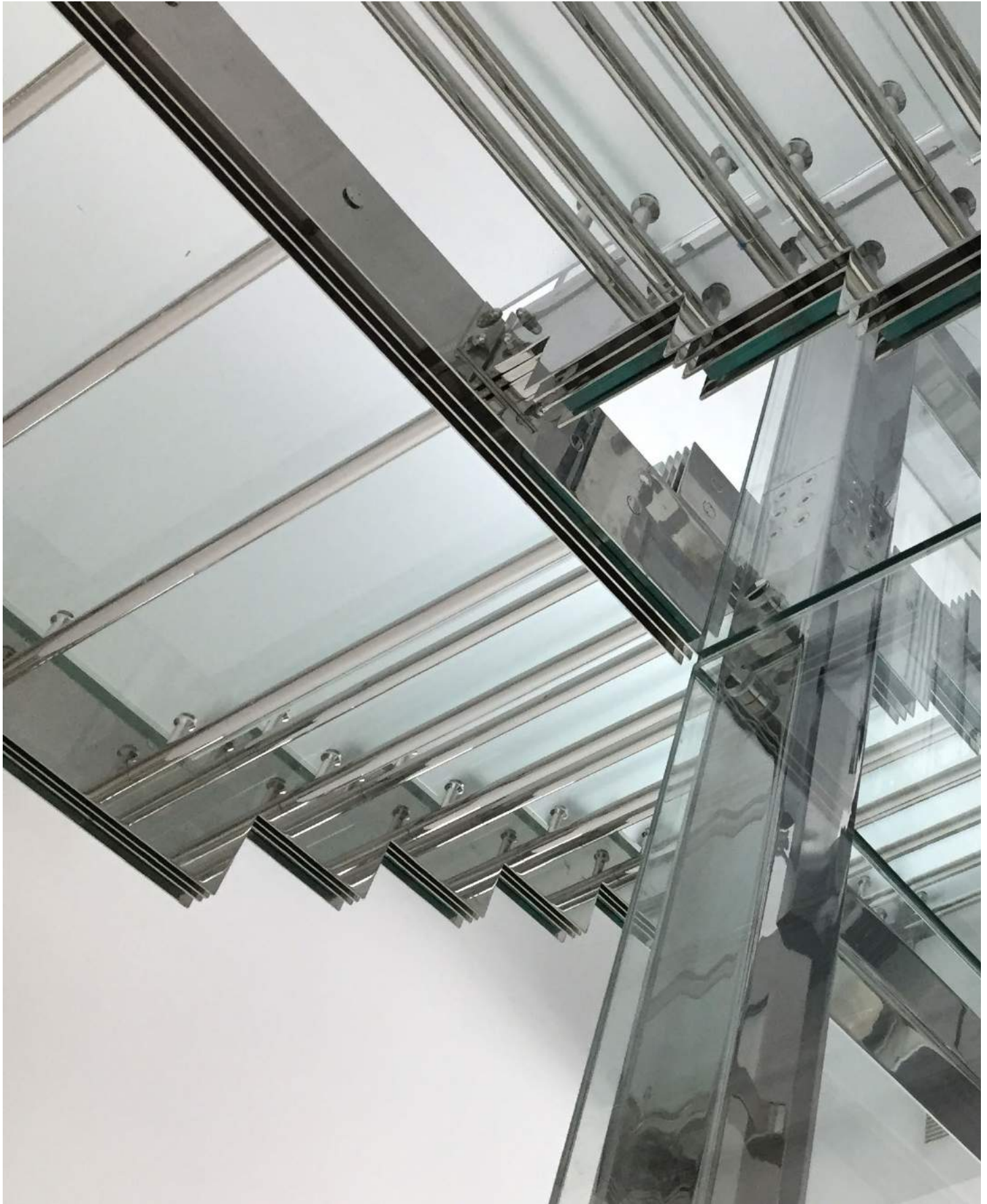


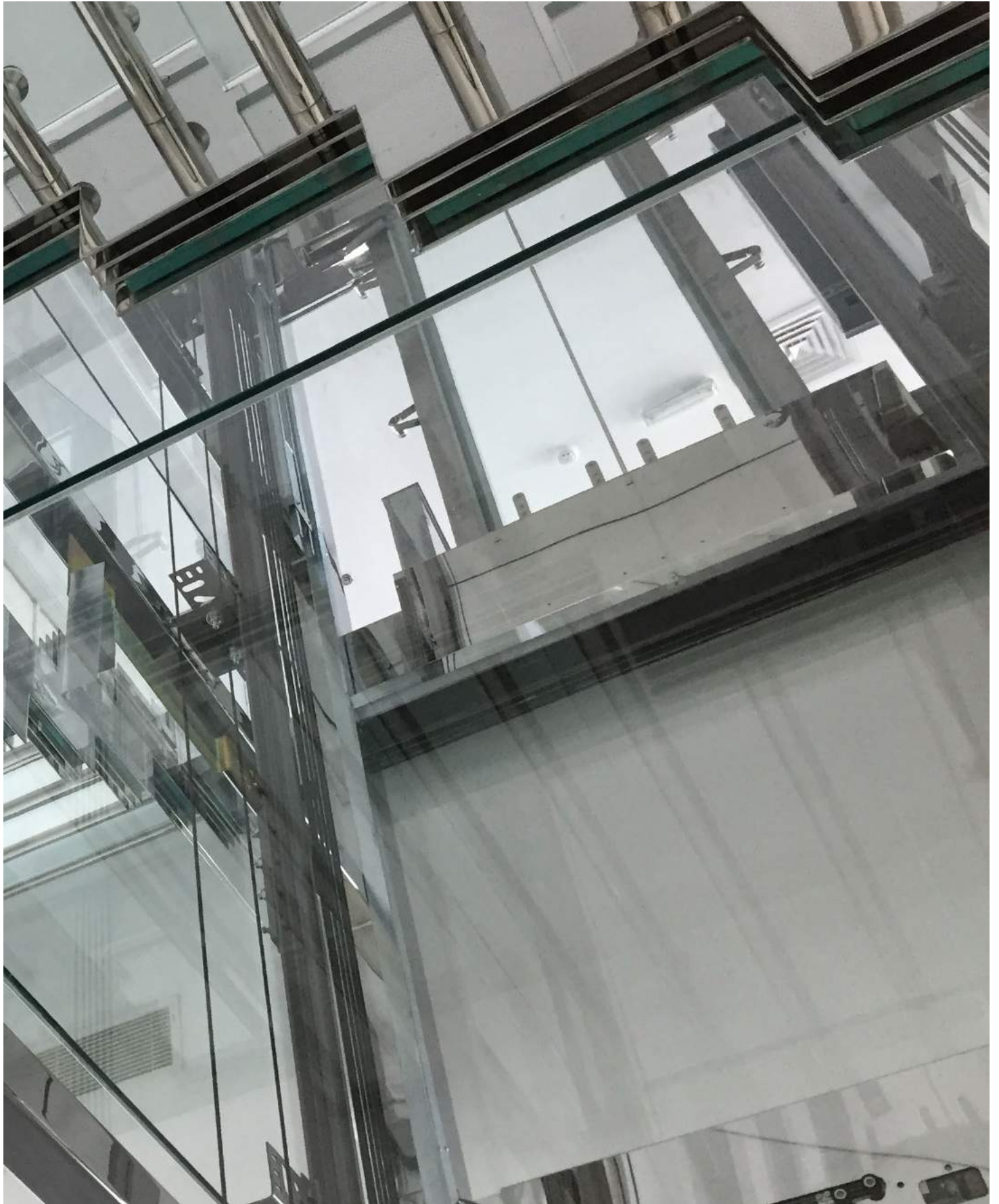


All hardware and accessories are made in mirror stainless steel; non-slip glass steps with mirror stainless steel substructure.

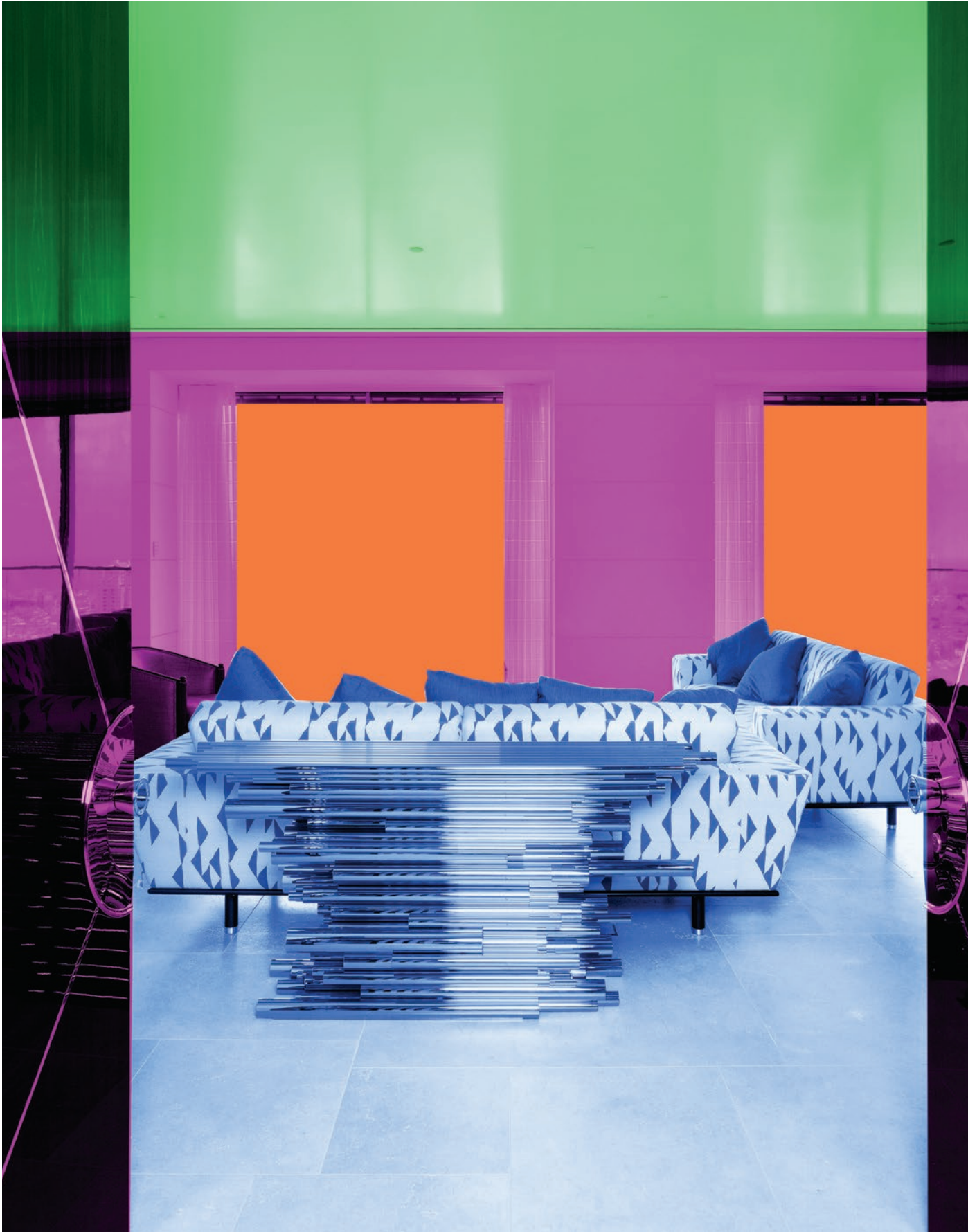
Bespoke four-story stair and tower lift for the largest official Lamborghini showroom in the world.

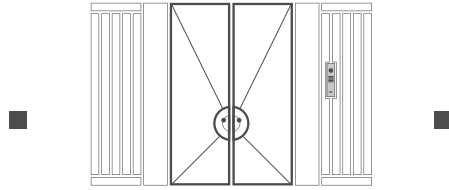






Mirrored stainless steel gallery with glass parapets.





PRIVATE RESIDENCE INTERIOR

DESIGN BY CICOGNANI KALLA ARCHITECTS

MIDDLE EAST - 2015



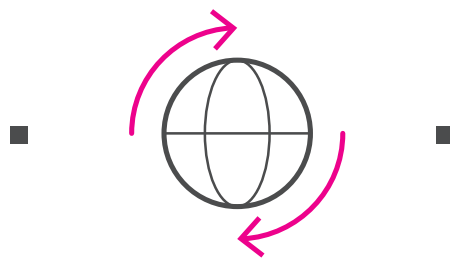
Located in a newly built high-rise in the Middle East, the residence occupies a full-floor. The mood, to reflect the character of the owner, is distinctly cosmopolitan.

A formal lobby and public areas seamlessly interact with smart home technology, luxury amenities and quality materials.



BY EXTRAVEGA

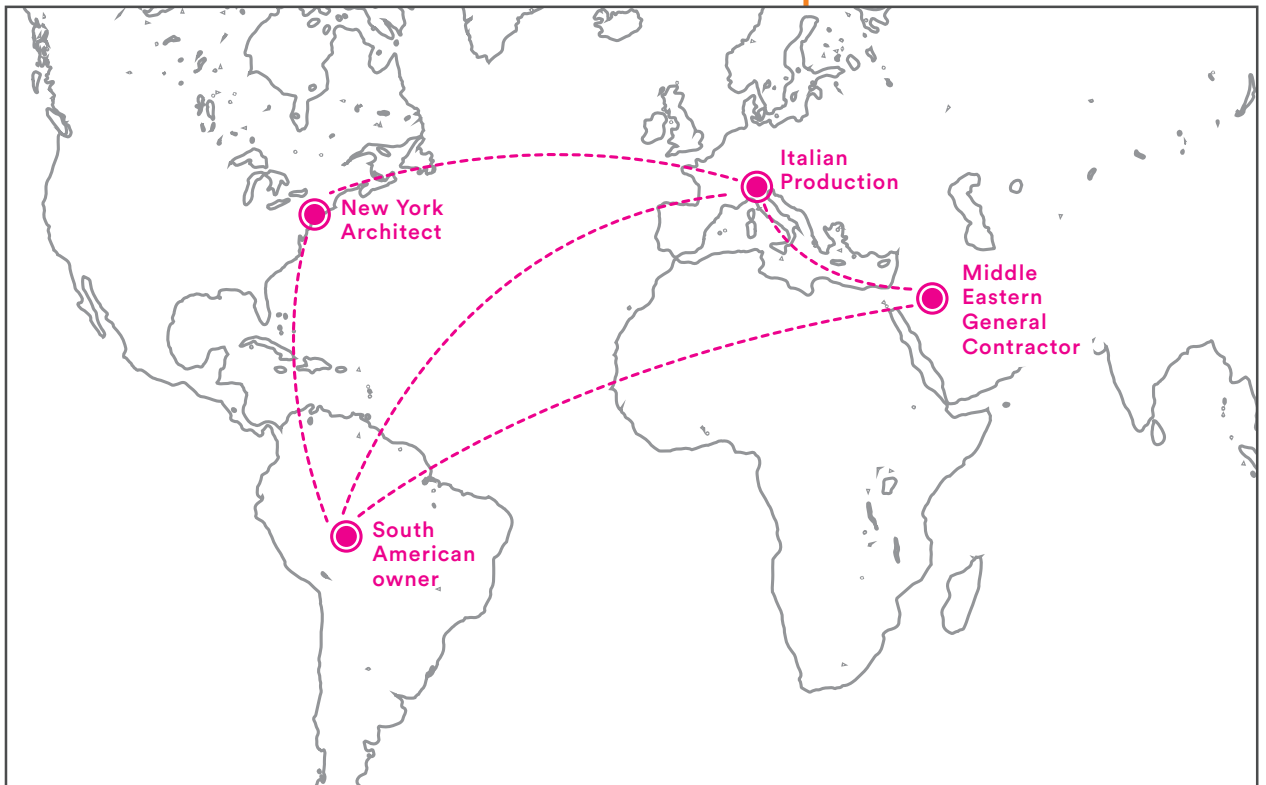
Material & Tech Briefing
Site Survey & 3D Scan
Engineering
Supervising & Installation
Products Certifications
International & Local Logistics
On Site Management



WORLDWIDE LOGISTICS

Working closely with the New York architect, the general contractor in the Middle East and the owners in South America, all the while deftly manufacturing everything in Italy, was the kind of geographical and logistical hopscotch Extravega uniquely relishes.

Our experience and knowledge delivered the singular vision of our partners within a highly complex, global choreography.



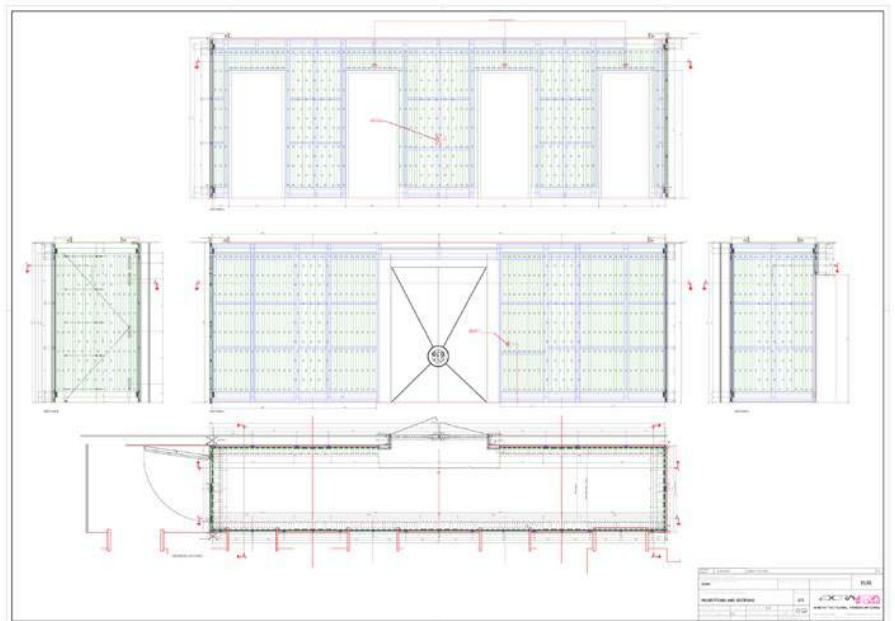












Lobby with vertical high gloss lacquered slats, door with custom polished nickel.





INTERIOR FASHION RETAIL

VINICIO BOUTIQUE
DESIGN BY PARISOTTO + FORMENTON

NOVARA, ITALY - 2015

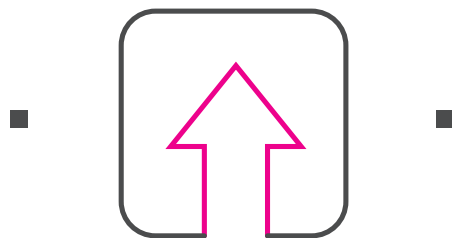


Important fashion brands known all over the world define themselves with boutiques where you will only find style and elegance.

Comfortable leather poufs, special engraving desks, and astonishing natural hot rolled black steel wall displays underline the finest aspects of clothes and accessories. The experience is unique and brand centric, leaving a lasting impression on its visitors.



BY EXTRAVEGA
Material & Tech Briefing
Site Survey & 3D Scan
Engineering
Supervising & Installation
Products Certifications
International & Local Logistics
On Site Management



UPGRADING THROUGH FABRICATION

For luxury brand retailer Vinicio, the team delivered a full service experience. On the exterior, crafted metal frames, expansive plate windows and a completely re-engineered entrance.

Inside, new coverings for walls and an elevator. Elegant wood, metal and glass counters. Shelves of glass and metal. Display cases were custom designed and installed. Discrete fitting rooms, lounges and lightboxed illumination heighten the drama. A project shepherded from start to finish. Turnkey in every way.





From top:
bespoke leather pouf, wooden
black lacquered sales desks with
special engraving; smoked glass
bookcase, pouf.

The black metal displays have
polished stainless steel shelves
and incorporated lighting.







Bespoke black steel metal lift covering, black metal steel displays.

#HighEndProjects

#CustomMade

#NewYork

#Milan

#Sydney

#Artwork

#QualityControl

#Installations

#Worldwide

#MadeInItaly

#SkilledWorkers

#LiquidMetal

#BudgetingControl

#24HourAssistance

#SurveyOnsite

#ArchitecturalFabrications

#SiteSurvey

#Paperwork

#BespokeFurniture

#Wood

#Glass

#SiteSupervising

#Engineering

#Know-How

#HandcraftedTradition

#LuxuryFinishes

#GeneralContractor

#NoFilters

#FuarisaloneMilano

#OurItalianWorkshop

#TechnicalOffice

#Team

#InteriorDesign

#ExtravegaPeople



#London

#LogisticsManagement

#100Employees

#OnSiteSupervision

#Extravega

#5ManufacturingPlants

#Metal

#3Dscan

#CNCEquipment

#ExtravegaMaterials

#AdvancedTechnology

#WeLoveOurJob

#Samples

#Production

#Training

#Innovation

“THE GREATEST IS SPACE,
FOR IT HOLDS ALL THINGS.”

Μέγιστον τόπος· ἅπαντα γὰρ χωρεῖ.

Thales of Miletus
Philosopher, mathematician, engineer

MILANO | ITALY
Via Pietro Nenni 9, 20037
Paderno Dugnano (Milano)
phone: +39 02 99 043 444

NEW YORK | USA
39 West 38th Street, Suite 6E
New York, NY 10018
phone: +1 347 706 1823

SYDNEY | AUSTRALIA
8 Jackson Crescent
Pennant Hills NSW 2120
phone: +61 2 80 05 5855

LONDON | UK
2 Eastbourne Terrace
W2 6LG London
phone: +44 20 3286 8564

www.extravega.com