

## PDC Corp Public Profile

Headquarters: Arlington, Texas (United States)

Certified Since: December 2023

Industry: Business Process Management, with an emphasis on improving workflows and outcomes related to environmental, health, and safety (EH&S) compliance.

Sectors: Manufacturing, Primary Metals, Oil Refining, Tire and Rubber Production, Semi-conductor and Electronics, Mining, Aerospace, and Metals Recycling

Operates In: United States, Canada, and Singapore

Website: [www.pdccorp.com](http://www.pdccorp.com)

### PDC Corp

Process Data Control (PDC) Corp is a Texas Corporation that provides its software products and professional services to some of the world's largest industrial firms. Since its inception, PDC's primary focus has been business process management, with an emphasis on improving workflows and outcomes related to environmental, health, and safety (EH&S) compliance.

PDC serves clients in a wide range of industrial sectors, from chemicals manufacturing to primary metals, oil refining, tire and rubber production, semi-conductor and electronics, mining, aerospace, and metals recycling. For more than three decades, our clients have relied on PDC's technology and services to assure continuous and cost-effective compliance with state, local and federal regulations.

PDC Corp is a wholly owned subsidiary of TenForce, a dynamic company that focuses on Operational Risk Management, EHSQ and the management of distributed infrastructure. TenForce applies modern technologies like machine learning, artificial intelligence and IoT to increase customer intelligence and efficiency by a factor (or force) of ten.

Based in Leuven, Belgium – close to the heart of Europe – TenForce serves customers around the world with a multidisciplinary team that includes the Elisa IndustriIQ family, an international industrial software business of Elisa Corporation. For more information, visit [www.tenforce.com](http://www.tenforce.com).

Most Recent PDC Corp B Impact Assessment Results						
IMPACT AREA:	Governance		SCORE:	19.8		QUESTIONS ANSWERED: All (28/28)
IMPACT AREA:	Workers		SCORE:	34.1		QUESTIONS ANSWERED: All (46/46)
IMPACT AREA:	Community		SCORE:	15.8		QUESTIONS ANSWERED: All (35/35)
IMPACT AREA:	Environment		SCORE:	19.7		QUESTIONS ANSWERED: All (30/30)
IMPACT AREA:	Governance		SCORE:	19.8		QUESTIONS ANSWERED: All (28/28)
IMPACT AREA:	Disclosure Questionnaire		SCORE:	n/a		QUESTIONS ANSWERED: All (51/51)
<b>OVERALL IMPACT</b> (Ave. Score = 50.9):			<b>SCORE:</b>	<b>92.9</b>		<b>COMPLETION:</b> <b>100%</b>

Note 1: The content in the " Most Recent PDC Corp B Impact Assessment Results" Table (above) was based on scoring that is published on B Lab's website, as shown below:

## B Impact Assessment

 PRINT PDF

 DOWNLOAD



This management tool, used by over 50,000 businesses worldwide, including over 3,000 Certified B Corporations, helps companies assess their impact on various stakeholders, including their workers, community, customers, and the environment.

OVERALL SCORE

92.9

COMPLETION

100%

OPERATIONS SCORE

67.9

IBM SCORE

20.8

N/A SCORE

4.0

### Impact Areas



IMPACT AREA

**Governance**

SCORE

**19.8**

Learn what your company can do to enhance policies and practices pertaining to its mission, ethics, accountability and transparency.

QUESTIONS ANSWERED

28/28

[VIEW](#)



IMPACT AREA

**Workers**

SCORE

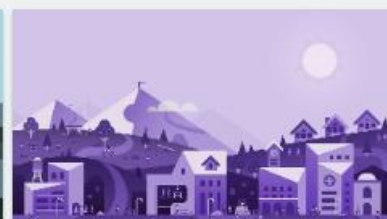
**34.1**

Learn what your company can do to contribute to your employees' financial, physical, professional, and social well-being.

QUESTIONS ANSWERED

46/46

[VIEW](#)



IMPACT AREA

**Community**

SCORE

**15.8**

Learn what your company can do to contribute to the economic and social well-being of the communities in which it operates.

QUESTIONS ANSWERED

35/35

[VIEW](#)



IMPACT AREA

**Environment**

SCORE

**19.7**

Learn what your company can do to improve its overall environmental stewardship.

QUESTIONS ANSWERED

30/30

[VIEW](#)



IMPACT AREA

**Customers**

SCORE

**3.2**

Learn what your company can do to improve the value that you create for your direct customers and the consumers of your products or services.

QUESTIONS ANSWERED

5/5

[VIEW](#)



IMPACT AREA

**Disclosure  
Questionnaire**

SCORE

**0.0**

Identify any potentially sensitive industries, practices, outcomes or fines/sanctions of your company that are not explicitly called out in the rest of the assessment.

QUESTIONS ANSWERED

51/51

[VIEW](#)