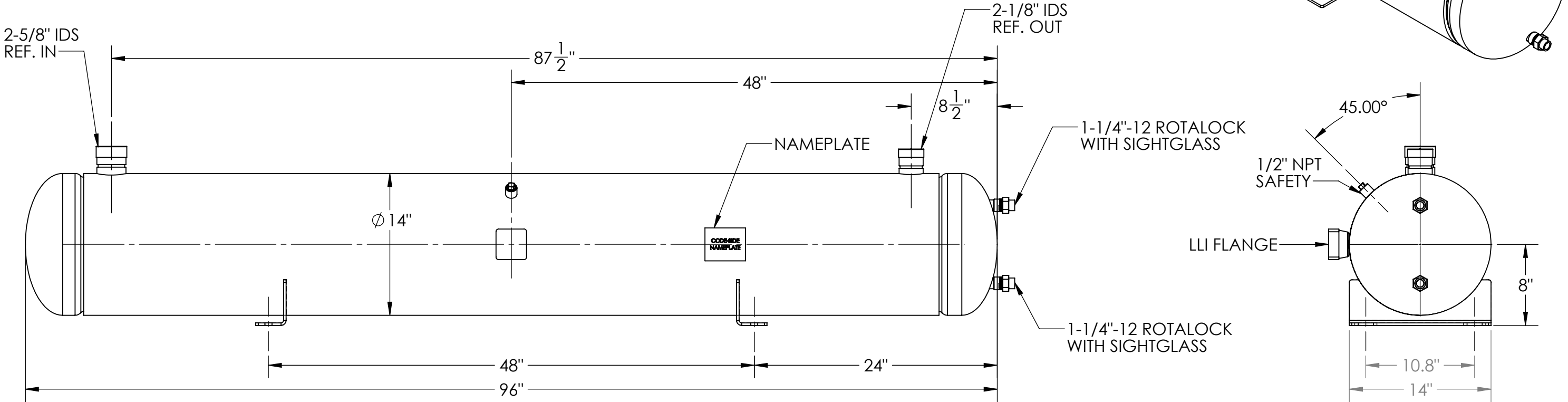


Approval: _____
Customer Signature Required Upon Order

Customer Company Name: _____

1. Shell Side:
- Max. Allowable Work Pressure: 675psi @ 250F
 - Min. Design Metal Temp.: -20F @ 675psi
 - Capacity: 7.43 ft³
 - Type of Fluid (Non-lethal): CFC, HFC, HCFC, OIL
 - Physical State of Fluid: LIQUID / VAPOR
 - Vessel Stamp: U
 - Corrosion Allowance: 0
2. Manufacture vessel in accordance with ASME Sec VIII Div. 1 (Latest Version)
3. Pressure boundary parts are carbon steel.
4. All connections will be shipped with caps and plugs.
5. Vessel will be painted black.



NO		REVISIONS (INDICATED BY Δ)		BY	DATE	JOB#	
0		ORIGINAL		C	10/03/2016		
1		REPLACED NAMEPLATE & FEET		ED	11/14/2019	MATERIAL	
2							
3						NAME	DATE
4						DRAWN	C 10/03/2016
5						CHECK	
6						APVD	

TITLE: APPROVAL DRAWING		
SIZE B	VESSEL NO. BH0211NK-XDX	REV 01
SCALE: 1:10		SHIPPING WEIGHT: 465.66 lbs

PROPRIETARY AND CONFIDENTIAL
THE INFORMATION CONTAINED IN THIS DRAWING IS THE SOLE PROPERTY OF BITZER US. ANY REPRODUCTION IN PART OR AS WHOLE WITHOUT THE WRITTEN PERMISSION OF BITZER US IS PROHIBITED.

VIEW CONVENTION
THIRD ANGLE

ANGULAR TOL ± 2°
FRAC TOL ± 1/4
1 INCH = 25.400000 MM

BREAK SHARP EDGES
THREADS TO BE CLASS 2
DIM & TOL PER ANSI Y14.5M

INCHES	METRIC (MM)
X ± .125	X.X ± 0.5
.XX ± .063	.XX ± 0.25
.XXX ± .005	.XXX ± 0.13