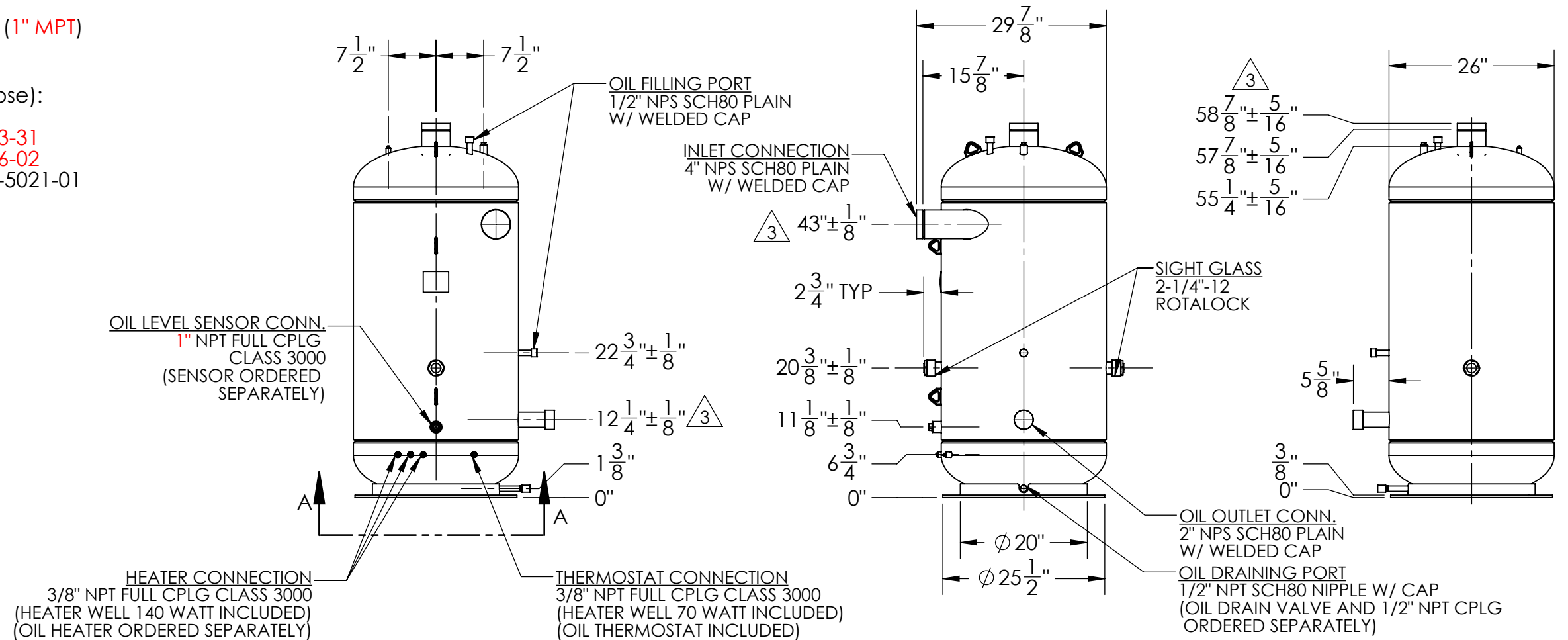
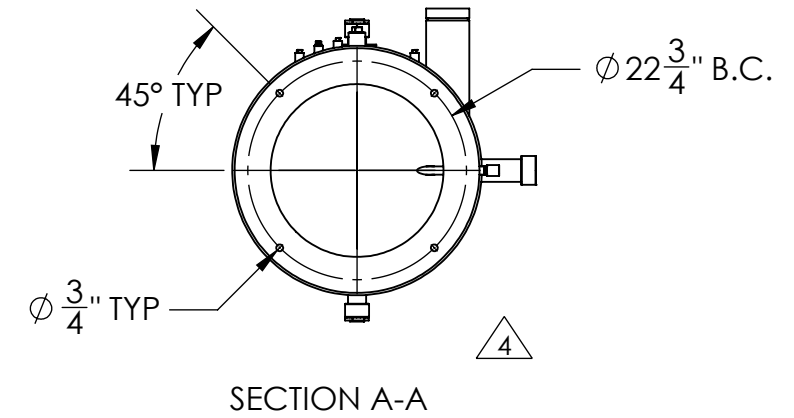
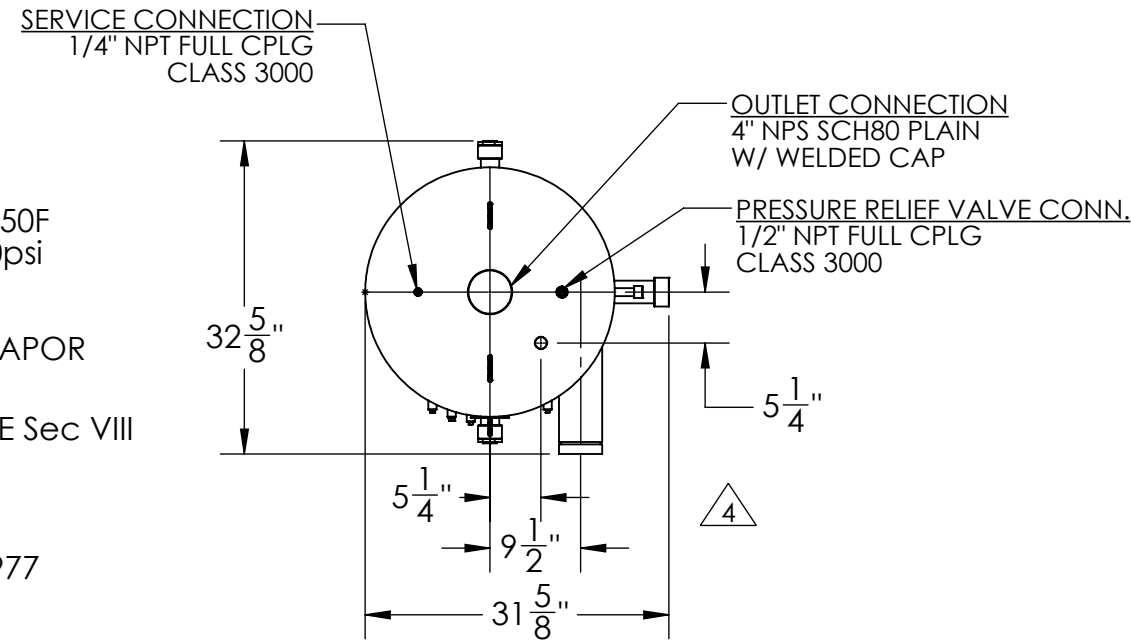


Approval: _____
 Customer Signature Required Upon Order

Customer Company Name: _____

- Shell Side:
 - Max. Allowable Work Pressure: 450psi @ 250F
 - Min. Design Metal Temp.: -20F @ 450psi
 - Capacity: 14.52 ft³
 - Type of Fluid (Non-lethal): R717 / OIL
 - Physical State of Fluid: LIQUID / VAPOR
 - Vessel Stamp: U
- Manufacture vessel in accordance with ASME Sec VIII Div. 1 (Latest Version)
- Parts to be ordered separately:
 - OIL DRAIN VALVE (OPT) - 263012000
 - 1/2" NPT FULL COUPLING (OPT) - P000001977
 - OIL HEATER 140 WATT (3 REQ)
 - 120V - 892-1140-01
 - 230V - 892-1140-02
 - OIL LEVEL SWITCH RELAY STYLE (1" MPT)
 - 115V - 791-9907-15
 - 230V - 791-9907-23
- Parts that are included (shipped loose):
 - HEATER WELL
 - 70 WATT (QTY. 1) - 345903-31
 - 140 WATT (QTY. 3) - 345906-02
 - OIL THERMOSTAT (QTY. 1) - 860-5021-01



NO	REVISIONS (INDICATED BY Δ)	BY	DATE	JOB#	NAME	DATE
0	ORIGINAL	FHO	04/03/2014			
1	UPDATE FORMAT AND NOTES	QKT	9/18/2014	MATERIAL		
2	Update 70W heater well part#; update dimensions	AC	2/3/2017			
3	Update dimensions	CT	5/24/2017			
4	MOVE AND LABEL VIEWS	DE	6/1/2017		DRAWN	04/03/2014
5					CHECK	
6					APVD	

		APPROVAL DRAWING	
SIZE	VESSEL NO.	REV	
B	OA14111US-NH3	04	
SCALE: 1:20	SHIPPING WEIGHT: 678.65 lbs		

PROPRIETARY AND CONFIDENTIAL
 THE INFORMATION CONTAINED IN THIS DRAWING IS THE SOLE PROPERTY OF BITZER US. ANY REPRODUCTION IN PART OR AS WHOLE WITHOUT THE WRITTEN PERMISSION OF BITZER US IS PROHIBITED.

VIEW CONVENTION
THIRD ANGLE

ANGULAR TOL ± 2°
 FRAC TOL ± 1/4
 1 INCH = 25.400000 MM

BREAK SHARP EDGES
 THREADS TO BE CLASS 2
 DIM & TOL PER ANSI Y14.5M

INCHES	METRIC (MM)	X	±
.X	.125	X.X	± 0.5
.XX	± .063	X.XX	± 0.25
.XXX	± .005	X.XXX	± 0.13