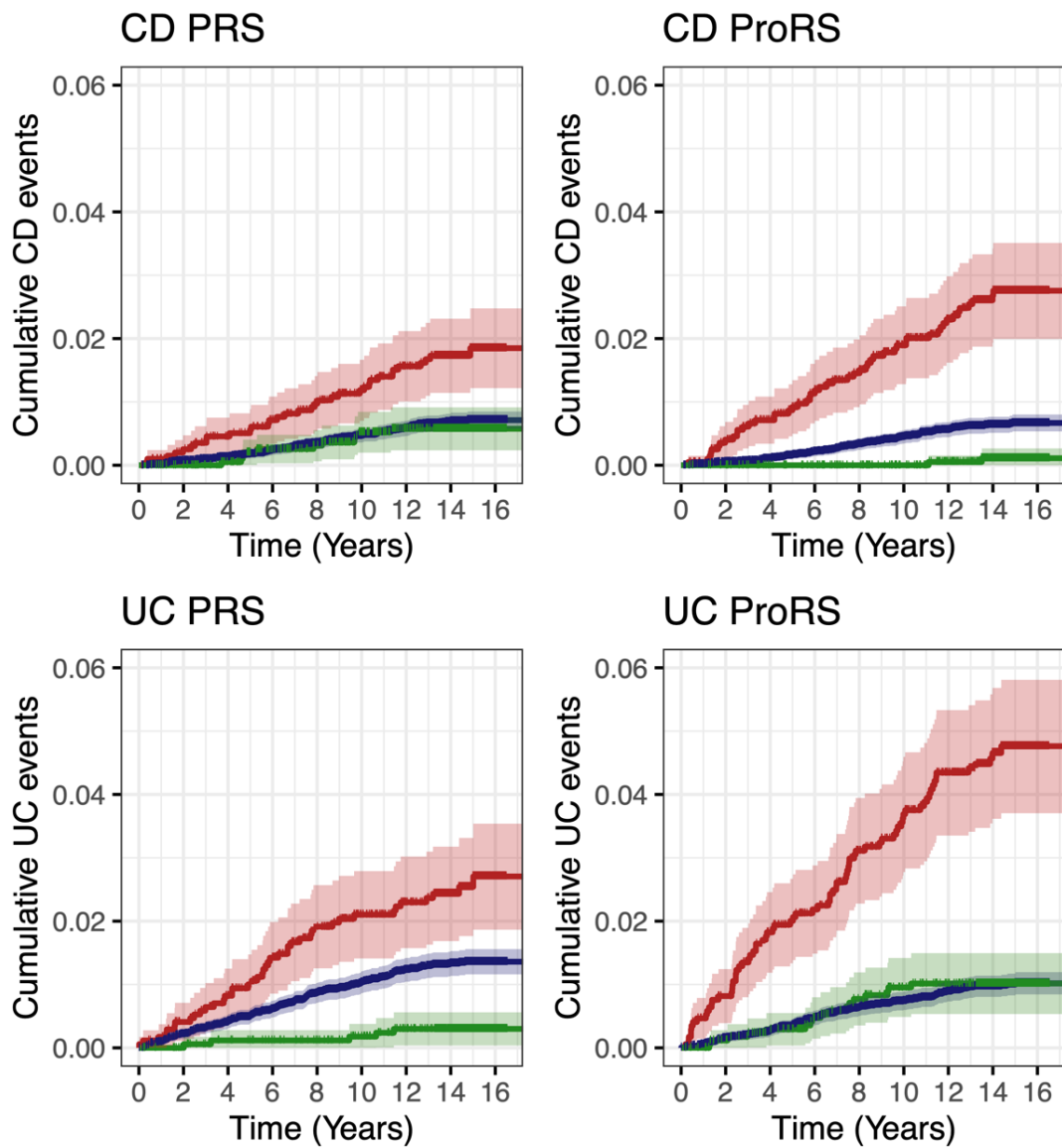


— High risk (>90%) — Medium risk (10–90%) — Low Risk (<10%)



**Supplemental Figure 1. Kaplan Meier curves for PRS and ProRS in Crohn's disease and ulcerative colitis.**

**Supplemental Table 1. Top 20 predictors for each LASSO model.** All predictors are either a protein name or the disease-specific “PRS” from Thompson et al.<sup>30</sup> The predictors are in descending order of the absolute value of their model coefficient with blue and red representing positive and negative coefficients respectively.

CD ProRS	CD combined	UC ProRS	UC combined
GUCA2A	PRS	PTGDS	PTGDS
IL15	GUCA2A	GZMB	PRS
PTGDS	IL15	INSL5	GZMB
FGF19	PTGDS	CCL11	INSL5
FABP6	FGF19	REG4	REG4
REG3A	FABP6	NOS2	NOS2
IL1R2	REG3A	GZMA	MMP10
CEACAM20	CEACAM20	MMP10	GZMA
ANGPTL3	IL1R2	PLA2G1B	PLA2G1B
AMOT	ANGPTL3	IL15	IL15
FGFBP1	AMOT	CXCL8	CCL11
MEP1A	MEP1A	FABP1	PARP1
IDS	FGFBP1	RGMA	GUCA2A
NT5E	IDS	EIF4EBP1	PCDH9
SSC4D	LRIG1	PCDH9	FABP1
ISM1	NT5E	GUCA2A	TNFRSF13B
LPA	FCN1	TNFRSF13B	CXCL8
LRIG1	LPA	L1CAM	RGMA
BGLAP	BGLAP	CA14	L1CAM
NXPH3	ISM1	PARP1	TFPI