

FINAL SCORE



Indiana

51



Maryland

66

Big Ten Women's Basketball Tournament

March 07, 2020 • Bankers Life Fieldhouse - Indianapolis, IN



BIG
WOMEN'S BASKETBALL
TOURNAMENT

FINAL STATISTICS

Official Box Score
Indiana vs Maryland
Game Totals -- Final Statistics
March 07, 2020 at Bankers Life Fieldhouse - Indianapolis, IN



Indiana 51

No.	Player	S	Pts	FG	3FG	FT	OR	DR	TR	PF	A	TO	Blk	Stl	Min	+/-
10	GULBE, ALEKSA	F	6	2-5	0-1	2-2	2	1	3	3	3	2	0	0	28	-13
13	PENN, JAELYN	G	2	1-5	0-3	0-0	0	4	4	0	1	2	0	0	26	-15
14	PATBERG, ALI	G	16	6-21	3-6	1-2	0	1	1	3	3	2	1	3	38	-16
34	BERGER, GRACE	G	10	3-12	0-3	4-4	0	6	6	2	7	4	0	1	39	-15
50	WISE, BRENN	F	7	2-8	1-6	2-4	3	3	6	0	1	0	0	1	32	-7
03	WAGGONER, GRACE	G	0	0-0	0-0	0-0	0	0	0	1	0	0	0	0	7	1
11	WILSON, CHANEL	G	0	0-0	0-0	0-0	0	0	0	0	0	0	0	0	2	1
33	ALLEN, JORIE	F	0	0-0	0-0	0-0	0	0	0	0	0	0	0	0	2	-3
54	HOLMES, MACKENZIE	F	10	5-7	0-0	0-0	2	3	5	4	0	1	0	1	26	-8
TEAM							2	4	6	0		1				
TOTALS			51	19-58	4-19	9-12	9	22	31	13	15	12	1	6	200	

Shooting By Period

Period	FG	FG%	3FG	3FG%	FT	FT%
1st Qtr	6-16	38%	1-4	25%	0-0	0%
2nd Qtr	4-14	29%	1-3	33%	2-4	50%
3rd Qtr	2-11	18%	0-5	00%	5-6	83%
4th Qtr	7-17	41%	2-7	29%	2-2	100%
1st Half	10-30	33%	2-7	29%	2-4	50%
2nd Half	9-28	32%	2-12	17%	7-8	88%
Game	19-58	32.8%	4-19	21.1%	9-12	75.0%

Deadball Rebounds: 2,2

Last FG: 4th-01:24

Biggest Run: 6-0

Largest lead: By 2 at 1st-07:27

Technical Fouls: None.

Maryland 66

No.	Player	S	Pts	FG	3FG	FT	OR	DR	TR	PF	A	TO	Blk	Stl	Min	+/-
01	AUSTIN, SHAKIRA	F	7	3-9	0-0	1-1	1	5	6	3	1	2	0	2	23	1
05	CHARLES, KAILA	G	11	5-10	0-0	1-1	2	6	8	4	4	3	0	0	35	16
11	MIKESELL, TAYLOR	G	5	2-10	1-7	0-0	0	1	1	1	0	3	0	0	28	10
22	WATSON, BLAIR	G	3	1-4	1-4	0-0	0	5	5	3	1	0	0	1	22	17
24	JONES, STEPHANIE	F	9	4-8	0-0	1-1	6	6	12	4	1	2	0	0	30	16
13	MASONIUS, FAITH	F	0	0-0	0-0	0-0	0	1	1	0	1	1	0	1	7	-3
14	MILLER, DIAMOND	G	15	6-12	3-5	0-0	1	1	2	1	1	1	1	1	29	8
15	OWUSU, ASHLEY	G	14	4-8	0-1	6-7	1	4	5	4	3	3	1	1	24	10
32	VUJACIC, SARA	G	2	1-2	0-1	0-0	0	0	0	0	0	0	0	0	1	0
TEAM							2	2	4	0		0				
TOTALS			66	26-63	5-18	9-10	13	31	44	20	12	15	2	6	200	

Shooting By Period

Period	FG	FG%	3FG	3FG%	FT	FT%
1st Qtr	7-17	41%	1-4	25%	1-2	50%
2nd Qtr	4-13	31%	1-5	20%	3-3	100%
3rd Qtr	10-18	56%	1-5	20%	1-1	100%
4th Qtr	5-15	33%	2-4	50%	4-4	100%
1st Half	11-30	37%	2-9	22%	4-5	80%
2nd Half	15-33	45%	3-9	33%	5-5	100%
Game	26-63	41.3%	5-18	27.8%	9-10	90.0%

Deadball Rebounds: 1,0

Last FG: 4th-00:53

Biggest Run: 17-0

Largest lead: By 19 at 4th-02:32

Technical Fouls: None.

Game Notes:

Officials: Michael McConnell, Kevin Pethtel, Julie Krommenhoek

Start Time: 06:35 PM ET

End Time: 08:20 PM ET

Game Duration: 1:45

Neutral Court;

Score	1st	2nd	3rd	4th	TOT
IND	13	11	9	18	51
mar	16	12	22	16	66

IND led for 4:22. mar led for 34:17.

Game was tied for 1:19.

Times tied: 3 Lead Changes: 6

Points from	IND	mar
In the Paint	24	28
Off Turns	19	14
2nd Chance	11	6
Fast Break	0	15
Bench	10	31

Official Box Score
Indiana vs Maryland
First Half Statistics Only
March 07, 2020 at Bankers Life Fieldhouse - Indianapolis, IN



Indiana 24

No.	Player	S	Pts	FG	3FG	FT	OR	DR	TR	PF	A	TO	Blk	Stl	Min	+/-
03	WAGGONER, GRACE	G	0	0-0	0-0	0-0	0	0	0	1	0	0	0	0	3	-2
10	GULBE, ALEKSA	F	2	1-2	0-0	0-0	1	1	2	2	1	2	0	0	11	-4
11	WILSON, CHANEL	G	0	0-0	0-0	0-0	0	0	0	0	0	0	0	0	1	-2
13	PENN, JAELYN	G	2	1-4	0-2	0-0	0	3	3	0	0	1	0	0	18	-2
14	PATBERG, ALI	G	11	4-12	2-2	1-2	0	1	1	0	3	1	1	1	19	-2
33	ALLEN, JORIE	F	0	0-0	0-0	0-0	0	0	0	0	0	0	0	0	2	-3
34	BERGER, GRACE	G	4	2-8	0-2	0-0	0	4	4	1	4	1	0	0	19	-4
50	WISE, BRENN	F	3	1-2	0-1	1-2	3	2	5	0	0	0	0	1	16	1
54	HOLMES, MACKENZIE	F	2	1-2	0-0	0-0	0	2	2	1	0	1	0	0	11	-2
	TEAM		0	0-0	0-0	0-0	1	2	3	0	0	0	0	0	0	
TOTALS			24	10-30	2-7	2-4	5	15	20	5	8	6	1	2	100	

Shooting By Period

Period	FG	FG%	3FG	3FG%	FT	FT%
1st Qtr	6-16	38%	1-4	25%	0-0	0%
2nd Qtr	4-14	29%	1-3	33%	2-4	50%
1st Half	10-30	33%	2-7	29%	2-4	50%
Game	19-58	32.8%	4-19	21.1%	9-12	75.0%

Deadball Rebounds: 2,2

Last FG Half: IND 2nd-00:06

Maryland 28

No.	Player	S	Pts	FG	3FG	FT	OR	DR	TR	PF	A	TO	Blk	Stl	Min	+/-
01	AUSTIN, SHAKIRA	F	5	2-6	0-0	1-1	1	3	4	0	1	1	0	1	14	1
05	CHARLES, KAILA	G	2	1-4	0-0	0-0	0	4	4	1	3	3	0	0	20	4
11	MIKESELL, TAYLOR	G	2	1-7	0-4	0-0	0	1	1	1	0	1	0	0	19	4
13	MASONIUS, FAITH	F	0	0-0	0-0	0-0	0	0	0	0	0	0	0	0	4	-1
14	MILLER, DIAMOND	G	5	2-4	1-2	0-0	0	1	1	0	0	1	1	1	13	-2
15	OWUSU, ASHLEY	G	8	3-5	0-1	2-3	0	1	1	2	1	1	0	1	11	7
22	WATSON, BLAIR	G	3	1-2	1-2	0-0	0	0	0	2	1	0	0	0	5	4
24	JONES, STEPHANIE	F	3	1-2	0-0	1-1	3	3	6	2	0	1	0	0	14	3
32	VUJACIC, SARA	G	0	0-0	0-0	0-0	0	0	0	0	0	0	0	0	0	0
	TEAM		0	0-0	0-0	0-0	1	2	3	0	0	0	0	0	0	
TOTALS			28	11-30	2-9	4-5	5	15	20	8	6	8	1	3	100	

Shooting By Period

Period	FG	FG%	3FG	3FG%	FT	FT%
1st Qtr	7-17	41%	1-4	25%	1-2	50%
2nd Qtr	4-13	31%	1-5	20%	3-3	100%
1st Half	11-30	37%	2-9	22%	4-5	80%
Game	26-63	41.3%	5-18	27.8%	9-10	90.0%

Deadball Rebounds: 1,0

Last FG Half: mar 2nd-04:50

Game Notes:

Officials: Michael McConnell, Kevin Pethtel, Julie Krommenhoek

Start Time: 06:35 PM ET

End Time: 08:20 PM ET

Game Duration: 1:45

Neutral Court;

Score	1st	2nd	3rd	4th	TOT
IND	13	11	9	18	51
mar	16	12	22	16	66

Points from (This Period)	IND	mar
In the Paint	10	12
Off Turns	10	6
2nd Chance	4	0
Fast Break	0	12
Bench	2	13

Official Box Score
Indiana vs Maryland
First Quarter Statistics Only
March 07, 2020 at Bankers Life Fieldhouse - Indianapolis, IN



Indiana 13

No.	Player	S	Pts	FG	3FG	FT	OR	DR	TR	PF	A	TO	Blk	Stl	Min	+/-
10	GULBE, ALEKSA	F	2	1-2	0-0	0-0	1	0	1	1	1	1	0	0	7	-2
13	PENN, JAELYNN	G	2	1-2	0-1	0-0	0	2	2	0	0	1	0	0	8	-1
14	PATBERG, ALI	G	5	2-4	1-1	0-0	0	1	1	0	2	1	1	0	9	-1
34	BERGER, GRACE	G	2	1-5	0-1	0-0	0	3	3	1	1	1	0	0	9	-3
50	WISE, BRENNAN	F	0	0-1	0-1	0-0	2	1	3	0	0	0	0	0	8	-1
03	WAGGONER, GRACE	G	0	0-0	0-0	0-0	0	0	0	1	0	0	0	0	3	-2
11	WILSON, CHANEL	G	0	0-0	0-0	0-0	0	0	0	0	0	0	0	0	1	-2
33	ALLEN, JORIE	F	0	0-0	0-0	0-0	0	0	0	0	0	0	0	0	0	0
54	HOLMES, MACKENZIE	F	2	1-2	0-0	0-0	0	1	1	0	0	0	0	0	5	-3
	TEAM						0	0	0	0		0				
TOTALS			13	6-16	1-4	0-0	3	8	11	3	4	4	1	0	50	

Shooting By Period

Period	FG	FG%	3FG	3FG%	FT	FT%
1st Qtr	6-16	38%	1-4	25%	0-0	0%
2nd Qtr	4-14	29%	1-3	33%	2-4	50%
1st Half	6-16	38%	1-4	25%	0-0	0%
1st Half	10-30	33%	2-7	29%	2-4	50%
Game	19-58	32.8%	4-19	21.1%	9-12	75.0%

Deadball Rebounds: 2,2

Maryland 16

No.	Player	S	Pts	FG	3FG	FT	OR	DR	TR	PF	A	TO	Blk	Stl	Min	+/-
01	AUSTIN, SHAKIRA	F	2	1-4	0-0	0-0	0	2	2	0	0	1	0	1	8	1
05	CHARLES, KAILA	G	2	1-2	0-0	0-0	0	2	2	0	2	1	0	0	10	3
11	MIKESELL, TAYLOR	G	2	1-4	0-2	0-0	0	1	1	0	0	0	0	0	10	3
22	WATSON, BLAIR	G	0	0-0	0-0	0-0	0	0	0	1	1	0	0	0	3	3
24	JONES, STEPHANIE	F	3	1-1	0-0	1-1	2	1	3	1	0	1	0	0	6	-1
13	MASONIUS, FAITH	F	0	0-0	0-0	0-0	0	0	0	0	0	0	0	0	2	2
14	MILLER, DIAMOND	G	3	1-2	1-1	0-0	0	0	0	0	0	0	0	1	7	0
15	OWUSU, ASHLEY	G	4	2-4	0-1	0-1	0	0	0	0	0	0	0	1	4	4
32	VUJACIC, SARA	G	0	0-0	0-0	0-0	0	0	0	0	0	0	0	0	0	0
	TEAM						1	1	2	0		0				
TOTALS			16	7-17	1-4	1-2	3	7	10	2	3	3	0	3	50	

Shooting By Period

Period	FG	FG%	3FG	3FG%	FT	FT%
1st Qtr	7-17	41%	1-4	25%	1-2	50%
2nd Qtr	4-13	31%	1-5	20%	3-3	100%
1st Half	7-17	41%	1-4	25%	1-2	50%
1st Half	11-30	37%	2-9	22%	4-5	80%
Game	26-63	41.3%	5-18	27.8%	9-10	90.0%

Deadball Rebounds: 1,0

Game Notes:

Officials: Michael McConnell, Kevin Pethtel, Julie Krommenhoek

Start Time: 06:35 PM ET

End Time: 08:20 PM ET

Game Duration: 1:45

Neutral Court;

Score	1st	2nd	3rd	4th	TOT
IND	13	11	9	18	51
mar	16	12	22	16	66

Points from (This Period)	IND	mar
In the Paint	6	8
Off Turns	5	4
2nd Chance	4	0
Fast Break	0	7
Bench	2	7

**Official Play-By-Play
Indiana vs Maryland
First Quarter**

March 07, 2020 at Bankers Life Fieldhouse - Indianapolis, IN



Period 1

Starters:

Indiana: 10 GULBE,ALEKSA (F); 13 PENN,JAELYN (G); 14 PATBERG,ALI (G); 34 BERGER,GRACE (G); 50 WISE,BRENNA (F);

Maryland: 1 AUSTIN,SHAKIRA (F); 5 CHARLES,KAILA (G); 11 MIKESELL,TAYLOR (G); 22 WATSON,BLAIR (G); 24 JONES,STEPHANIE (F);

Time	VISITORS: Indiana	Score	Margin	HOME: Maryland
09:48		2-0	H 2	GOOD! JUMPER by CHARLES, KAILA
09:31	GOOD! LAYUP by GULBE, ALEKSA	2-2	T	
09:31	ASSIST by BERGER, GRACE			
09:16		4-2	H 2	GOOD! LAYUP by JONES, STEPHANIE
09:16				ASSIST by CHARLES, KAILA
09:16	FOUL (PERSONAL) by BERGER, GRACE			
09:16		5-2	H 3	GOOD! FT by JONES, STEPHANIE
09:13				FOUL (PERSONAL) by WATSON, BLAIR
08:57	GOOD! LAYUP by BERGER, GRACE	5-4	H 1	
08:37				TURNOVER (LOSTBALL) by JONES, STEPHANIE
08:37				SUB OUT: WATSON, BLAIR
08:37				SUB IN: MILLER, DIAMOND
08:23	GOOD! JUMPER by PENN, JAELYN	5-6	V 1	
08:23	ASSIST by PATBERG, ALI			
08:08		7-6	H 1	GOOD! JUMPER by AUSTIN, SHAKIRA [PNT]
07:55	MISSED LAYUP by PATBERG, ALI			
07:52				REBOUND (DEF) by JONES, STEPHANIE
07:38				TURNOVER (TRAVEL) by AUSTIN, SHAKIRA
07:27	GOOD! 3PTR by PATBERG, ALI	7-9	V 2	
07:27	ASSIST by GULBE, ALEKSA			
07:08				MISSED JUMPER by MIKESELL, TAYLOR
07:05	REBOUND (DEF) by PENN, JAELYN			
06:57	MISSED JUMPER by BERGER, GRACE			
06:53				REBOUND (DEF) by CHARLES, KAILA
06:48				MISSED LAYUP by CHARLES, KAILA
06:45				REBOUND (OFF) by JONES, STEPHANIE
06:42				MISSED LAYUP by AUSTIN, SHAKIRA
06:42	BLOCK by PATBERG, ALI			
06:42	REBOUND (DEF) by PATBERG, ALI			
06:23	TURNOVER (LOSTBALL) by PATBERG, ALI			
06:23				STEAL by MILLER, DIAMOND
06:20				TURNOVER (DRIBBLING) by CHARLES, KAILA
06:20	SUB OUT: GULBE, ALEKSA			
06:20	SUB IN: HOLMES, MACKENZIE			
06:06	MISSED 3PTR by PENN, JAELYN			
06:01				REBOUND (DEF) by AUSTIN, SHAKIRA
05:58		9-9	T	GOOD! JUMPER by MIKESELL, TAYLOR [FB]
05:31	MISSED JUMPER by HOLMES, MACKENZIE			
05:28				REBOUND (DEF) by CHARLES, KAILA
05:24		12-9	H 3	GOOD! 3PTR by MILLER, DIAMOND [FB]
05:24				ASSIST by CHARLES, KAILA
04:54	MISSED JUMPER by BERGER, GRACE			
04:51	REBOUND (OFF) by WISE, BRENNA			
04:45	GOOD! JUMPER by PATBERG, ALI	12-11	H 1	
04:29				MISSED JUMPER by AUSTIN, SHAKIRA
04:24	REBOUND (DEF) by BERGER, GRACE			
04:22	MISSED LAYUP by PATBERG, ALI			
04:19	REBOUND (OFF) by WISE, BRENNA			
04:15	GOOD! LAYUP by HOLMES, MACKENZIE	12-13	V 1	
04:15	ASSIST by PATBERG, ALI			
03:55				MISSED 3PTR by MIKESELL, TAYLOR
03:51				REBOUND (OFF) by JONES, STEPHANIE
03:48				MISSED 3PTR by MIKESELL, TAYLOR
03:46	REBOUND (DEF) by WISE, BRENNA			
03:46				FOUL (PERSONAL) by JONES, STEPHANIE
03:46				
03:46				SUB OUT: JONES, STEPHANIE
03:46				SUB IN: OWUSU, ASHLEY
03:46	SUB OUT: PENN, JAELYN			
03:46	SUB OUT: WISE, BRENNA			
03:46	SUB IN: WAGGONER, GRACE			
03:46	SUB IN: GULBE, ALEKSA			
03:31	MISSED JUMPER by GULBE, ALEKSA			
03:28				REBOUND (DEF) by AUSTIN, SHAKIRA
03:13				MISSED JUMPER by MILLER, DIAMOND
03:10	REBOUND (DEF) by HOLMES, MACKENZIE			
02:43	MISSED JUMPER by BERGER, GRACE			
02:40	REBOUND (OFF) by GULBE, ALEKSA			
02:33	MISSED 3PTR by BERGER, GRACE			
02:27				REBOUND (DEF) by MIKESELL, TAYLOR

Time	VISITORS: Indiana	Score	Margin	HOME: Maryland
02:11				MISSED JUMPER by AUSTIN, SHAKIRA
02:08	REBOUND (DEF) by BERGER, GRACE			
01:54	TURNOVER (BADPASS) by BERGER, GRACE			
01:54				STEAL by AUSTIN, SHAKIRA
01:38		14-13	H 1	GOOD! LAYUP by OWUSU, ASHLEY
01:38	FOUL (PERSONAL) by WAGGONER, GRACE			
01:38				SUB OUT: AUSTIN, SHAKIRA
01:38				SUB OUT: MILLER, DIAMOND
01:38				SUB IN: MASONIUS, FAITH
01:38				SUB IN: WATSON, BLAIR
01:38	SUB OUT: WAGGONER, GRACE			
01:38	SUB OUT: PATBERG, ALI			
01:38	SUB OUT: HOLMES, MACKENZIE			
01:38	SUB IN: WILSON, CHANEL			
01:38	SUB IN: PENN, JAELYNN			
01:38	SUB IN: WISE, BRENNNA			
01:38				MISSED FT by OWUSU, ASHLEY
01:37	REBOUND (DEF) by BERGER, GRACE			
01:15	TURNOVER (BADPASS) by PENN, JAELYNN			
01:15				STEAL by OWUSU, ASHLEY
01:11		16-13	H 3	GOOD! LAYUP by OWUSU, ASHLEY [FB]
01:11				ASSIST by WATSON, BLAIR
00:45	FOUL (OFF) by GULBE, ALEKSA			
00:45	TURNOVER (OFFENSIVE) by GULBE, ALEKSA			
00:45	SUB OUT: WILSON, CHANEL			
00:45	SUB OUT: BERGER, GRACE			
00:45	SUB IN: WAGGONER, GRACE			
00:45	SUB IN: PATBERG, ALI			
00:36				MISSED 3PTR by OWUSU, ASHLEY
00:32	REBOUND (DEF) by PENN, JAELYNN			
00:18	MISSED 3PTR by WISE, BRENNNA			
00:17				REBOUND (DEF) by TEAM
00:01				MISSED JUMPER by OWUSU, ASHLEY
00:00				REBOUND (OFF) by TEAM

Indiana 13, Maryland 16

Points from (This Period)	IND	mar
In the Paint	6	8
Off Turns	5	4
2nd Chance	4	0
Fast Break	0	7
Bench	2	7

Official Box Score
Indiana vs Maryland
Second Quarter Statistics Only
March 07, 2020 at Bankers Life Fieldhouse - Indianapolis, IN



Indiana 11

No.	Player	S	Pts	FG	3FG	FT	OR	DR	TR	PF	A	TO	Blk	Stl	Min	+/-
10	GULBE, ALEKSA	F	0	0-0	0-0	0-0	0	1	1	1	0	1	0	0	4	-2
13	PENN, JAELYNN	G	0	0-2	0-1	0-0	0	1	1	0	0	0	0	0	10	-1
14	PATBERG, ALI	G	6	2-8	1-1	1-2	0	0	0	0	1	0	0	1	10	-1
34	BERGER, GRACE	G	2	1-3	0-1	0-0	0	1	1	0	3	0	0	0	10	-1
50	WISE, BRENNAN	F	3	1-1	0-0	1-2	1	1	2	0	0	0	0	1	8	2
03	WAGGONER, GRACE	G	0	0-0	0-0	0-0	0	0	0	0	0	0	0	0	0	0
11	WILSON, CHANEL	G	0	0-0	0-0	0-0	0	0	0	0	0	0	0	0	0	0
33	ALLEN, JORIE	F	0	0-0	0-0	0-0	0	0	0	0	0	0	0	0	2	-3
54	HOLMES, MACKENZIE	F	0	0-0	0-0	0-0	0	1	1	1	0	1	0	0	6	1
	TEAM						1	2	3	0		0				
TOTALS			11	4-14	1-3	2-4	2	7	9	2	4	2	0	2	50	

Shooting By Period

Period	FG	FG%	3FG	3FG%	FT	FT%
3rd Qtr	2-11	18%	0-5	00%	5-6	83%
4th Qtr	7-17	41%	2-7	29%	2-2	100%
2nd Half	4-14	29%	1-3	33%	2-4	50%
2nd Half	9-28	32%	2-12	17%	7-8	88%
Game	19-58	32.8%	4-19	21.1%	9-12	75.0%

Deadball Rebounds: 2,2

Maryland 12

No.	Player	S	Pts	FG	3FG	FT	OR	DR	TR	PF	A	TO	Blk	Stl	Min	+/-
01	AUSTIN, SHAKIRA	F	3	1-2	0-0	1-1	1	1	2	0	1	0	0	0	6	0
05	CHARLES, KAILA	G	0	0-2	0-0	0-0	0	2	2	1	1	2	0	0	10	1
11	MIKESELL, TAYLOR	G	0	0-3	0-2	0-0	0	0	0	1	0	1	0	0	9	1
22	WATSON, BLAIR	G	3	1-2	1-2	0-0	0	0	0	1	0	0	0	0	2	1
24	JONES, STEPHANIE	F	0	0-1	0-0	0-0	1	2	3	1	0	0	0	0	8	4
13	MASONIUS, FAITH	F	0	0-0	0-0	0-0	0	0	0	0	0	0	0	0	2	-3
14	MILLER, DIAMOND	G	2	1-2	0-1	0-0	0	1	1	0	0	1	1	0	6	-2
15	OWUSU, ASHLEY	G	4	1-1	0-0	2-2	0	1	1	2	1	1	0	0	7	3
32	VUJACIC, SARA	G	0	0-0	0-0	0-0	0	0	0	0	0	0	0	0	0	0
	TEAM						0	1	1	0		0				
TOTALS			12	4-13	1-5	3-3	2	8	10	6	3	5	1	0	50	

Shooting By Period

Period	FG	FG%	3FG	3FG%	FT	FT%
3rd Qtr	10-18	56%	1-5	20%	1-1	100%
4th Qtr	5-15	33%	2-4	50%	4-4	100%
2nd Half	4-13	31%	1-5	20%	3-3	100%
2nd Half	15-33	45%	3-9	33%	5-5	100%
Game	26-63	41.3%	5-18	27.8%	9-10	90.0%

Deadball Rebounds: 1,0

Game Notes:

Officials: Michael McConnell, Kevin Pethtel, Julie Krommenhoek

Start Time: 06:35 PM ET

End Time: 08:20 PM ET

Game Duration: 1:45

Neutral Court;

Score	1st	2nd	3rd	4th	TOT
IND	13	11	9	18	51
mar	16	12	22	16	66

Points from (This Period)	IND	mar
In the Paint	4	4
Off Turns	5	2
2nd Chance	0	0
Fast Break	0	5
Bench	0	6

Official Play-By-Play
Indiana vs Maryland
Second Quarter
March 07, 2020 at Bankers Life Fieldhouse - Indianapolis, IN



Period 2

Starters:

Indiana: 10 GULBE,ALEKSA (F); 13 PENN,JAELYNN (G); 14 PATBERG,ALI (G); 34 BERGER,GRACE (G); 50 WISE,BRENNA (F);

Maryland: 1 AUSTIN,SHAKIRA (F); 5 CHARLES,KAILA (G); 11 MIKESELL,TAYLOR (G); 22 WATSON,BLAIR (G); 24 JONES,STEPHANIE (F);

Time	VISITORS: Indiana	Score	Margin	HOME: Maryland
10:00				SUB OUT: MASONIUS, FAITH
10:00				SUB IN: JONES, STEPHANIE
10:00	SUB OUT: WAGGONER, GRACE			
10:00	SUB IN: BERGER, GRACE			
09:54				MISSED JUMPER by CHARLES, KAILA
09:49	REBOUND (DEF) by WISE, BRENNA			
09:25	MISSED JUMPER by PATBERG, ALI			
09:23	REBOUND (OFF) by TEAM			
09:12	MISSED JUMPER by PENN, JAELYNN			
09:09				REBOUND (DEF) by TEAM
08:47		19-13	H 6	GOOD! 3PTR by WATSON, BLAIR
08:47				ASSIST by OWUSU, ASHLEY
08:15	GOOD! JUMPER by BERGER, GRACE	19-15	H 4	
08:15	ASSIST by PATBERG, ALI			
08:07	FOUL (PERSONAL) by GULBE, ALEKSA			
08:07				SUB OUT: CHARLES, KAILA
08:07				SUB IN: AUSTIN, SHAKIRA
08:07	SUB OUT: GULBE, ALEKSA			
08:07	SUB IN: HOLMES, MACKENZIE			
08:07				SUB OUT: MIKESELL, TAYLOR
08:07				SUB IN: MILLER, DIAMOND
08:07		20-15	H 5	GOOD! FT by OWUSU, ASHLEY [FB]
08:07		21-15	H 6	GOOD! FT by OWUSU, ASHLEY [FB]
07:54	GOOD! LAYUP by PATBERG, ALI	21-17	H 4	
07:54	ASSIST by BERGER, GRACE			
07:43				MISSED 3PTR by WATSON, BLAIR
07:40				REBOUND (OFF) by JONES, STEPHANIE
07:40				MISSED JUMPER by JONES, STEPHANIE
07:39	REBOUND (DEF) by BERGER, GRACE			
07:37				FOUL (PERSONAL) by WATSON, BLAIR
07:37				SUB OUT: WATSON, BLAIR
07:37				SUB IN: CHARLES, KAILA
07:28	MISSED LAYUP by PATBERG, ALI			
07:25				REBOUND (DEF) by MILLER, DIAMOND
07:14				MISSED LAYUP by CHARLES, KAILA
07:12	REBOUND (DEF) by TEAM			
06:51				FOUL (PERSONAL) by OWUSU, ASHLEY
06:51				SUB OUT: OWUSU, ASHLEY
06:51				SUB IN: MIKESELL, TAYLOR
06:51	MISSED FT by PATBERG, ALI			
06:51	REBOUND (OFF) by TEAM			
06:51	GOOD! FT by PATBERG, ALI	21-18	H 3	
06:38				TURNOVER (BADPASS) by CHARLES, KAILA
06:38	STEAL by WISE, BRENNA			
06:37				FOUL (PERSONAL) by CHARLES, KAILA
06:14	GOOD! 3PTR by PATBERG, ALI	21-21	T	
06:14	ASSIST by BERGER, GRACE			
05:56		23-21	H 2	GOOD! LAYUP by MILLER, DIAMOND
05:31	MISSED JUMPER by PATBERG, ALI			
05:28				REBOUND (DEF) by CHARLES, KAILA
05:24		25-21	H 4	GOOD! LAYUP by AUSTIN, SHAKIRA [FB/PNT]
05:24				ASSIST by CHARLES, KAILA
05:24	FOUL (PERSONAL) by HOLMES, MACKENZIE			
05:24				SUB OUT: MILLER, DIAMOND
05:24				SUB IN: OWUSU, ASHLEY
05:24	SUB OUT: WISE, BRENNA			
05:24	SUB OUT: HOLMES, MACKENZIE			
05:24	SUB IN: GULBE, ALEKSA			
05:24	SUB IN: ALLEN, JORIE			
05:24		26-21	H 5	GOOD! FT by AUSTIN, SHAKIRA [FB]
05:03	TURNOVER (TRAVEL) by GULBE, ALEKSA			
05:03	SUB OUT: GULBE, ALEKSA			
05:03	SUB IN: HOLMES, MACKENZIE			
04:50		28-21	H 7	GOOD! JUMPER by OWUSU, ASHLEY
04:50				ASSIST by AUSTIN, SHAKIRA
04:33	MISSED 3PTR by PENN, JAELYNN			
04:29				REBOUND (DEF) by CHARLES, KAILA
04:14				MISSED LAYUP by AUSTIN, SHAKIRA
04:10	REBOUND (DEF) by PENN, JAELYNN			
04:03	MISSED JUMPER by PATBERG, ALI			

Time	VISITORS: Indiana	Score	Margin	HOME: Maryland
04:01				REBOUND (DEF) by AUSTIN, SHAKIRA
03:53				MISSED 3PTR by MIKESELL, TAYLOR
03:50	REBOUND (DEF) by HOLMES, MACKENZIE			
03:45				
03:45				SUB OUT: AUSTIN, SHAKIRA
03:45				SUB IN: MILLER, DIAMOND
03:45	SUB OUT: ALLEN, JORIE			
03:45	SUB OUT: HOLMES, MACKENZIE			
03:45	SUB IN: GULBE, ALEKSA			
03:45	SUB IN: WISE, BRENNNA			
03:43	MISSED 3PTR by BERGER, GRACE			
03:40	REBOUND (OFF) by WISE, BRENNNA			
03:36	MISSED JUMPER by PATBERG, ALI			
03:36				BLOCK by MILLER, DIAMOND
03:28				REBOUND (DEF) by JONES, STEPHANIE
03:14				TURNOVER (TRAVEL) by MILLER, DIAMOND
02:50	MISSED JUMPER by PATBERG, ALI			
02:46				REBOUND (DEF) by JONES, STEPHANIE
02:39				MISSED 3PTR by MILLER, DIAMOND
02:37	REBOUND (DEF) by TEAM			
02:08	MISSED JUMPER by BERGER, GRACE			
02:05				REBOUND (DEF) by OWUSU, ASHLEY
02:03				MISSED JUMPER by MIKESELL, TAYLOR
01:59	REBOUND (DEF) by GULBE, ALEKSA			
01:52				FOUL (PERSONAL) by JONES, STEPHANIE
01:52				SUB OUT: MILLER, DIAMOND
01:52				SUB OUT: JONES, STEPHANIE
01:52				SUB IN: AUSTIN, SHAKIRA
01:52				SUB IN: MASONIUS, FAITH
01:52	SUB OUT: GULBE, ALEKSA			
01:52	SUB IN: HOLMES, MACKENZIE			
01:52	MISSED FT by WISE, BRENNNA			
01:52	REBOUND (OFF) by TEAM			
01:52	GOOD! FT by WISE, BRENNNA	28-22	H 6	
01:30				MISSED 3PTR by MIKESELL, TAYLOR
01:26				REBOUND (OFF) by AUSTIN, SHAKIRA
01:13				FOUL (OFF) by OWUSU, ASHLEY
01:13				TURNOVER (OFFENSIVE) by OWUSU, ASHLEY
01:13				SUB OUT: OWUSU, ASHLEY
01:13				SUB IN: MILLER, DIAMOND
00:47	TURNOVER (OTHER) by HOLMES, MACKENZIE			
00:34				TURNOVER (LOSTBALL) by CHARLES, KAILA
00:34	STEAL by PATBERG, ALI			
00:06	GOOD! LAYUP by WISE, BRENNNA [PNT]	28-24	H 4	
00:06	ASSIST by BERGER, GRACE			
00:01				FOUL (OFF) by MIKESELL, TAYLOR
00:01				TURNOVER (OFFENSIVE) by MIKESELL, TAYLOR

Indiana 24, Maryland 28

Points from (This Period)	IND	mar
In the Paint	4	4
Off Turns	5	2
2nd Chance	0	0
Fast Break	0	5
Bench	0	6

Official Box Score
Indiana vs Maryland
Second Half Statistics Only
March 07, 2020 at Bankers Life Fieldhouse - Indianapolis, IN



Indiana 27

No.	Player	S	Pts	FG	3FG	FT	OR	DR	TR	PF	A	TO	Blk	Stl	Min	+/-
03	WAGGONER, GRACE	G	0	0-0	0-0	0-0	0	0	0	0	0	0	0	0	4	3
10	GULBE, ALEKSA	F	4	1-3	0-1	2-2	1	0	1	1	2	0	0	0	17	-9
11	WILSON, CHANEL	G	0	0-0	0-0	0-0	0	0	0	0	0	0	0	0	1	3
13	PENN, JAELYNN	G	0	0-1	0-1	0-0	0	1	1	0	1	1	0	0	8	-13
14	PATBERG, ALI	G	5	2-9	1-4	0-0	0	0	0	3	0	1	0	2	19	-14
33	ALLEN, JORIE	F	0	0-0	0-0	0-0	0	0	0	0	0	0	0	0	0	0
34	BERGER, GRACE	G	6	1-4	0-1	4-4	0	2	2	1	3	3	0	1	20	-11
50	WISE, BRENNNA	F	4	1-6	1-5	1-2	0	1	1	0	1	0	0	0	16	-8
54	HOLMES, MACKENZIE	F	8	4-5	0-0	0-0	2	1	3	3	0	0	0	1	15	-6
	TEAM		0	0-0	0-0	0-0	1	2	3	0	0	1	0	0	0	
TOTALS			27	9-28	2-12	7-8	4	7	11	8	7	6	0	4	100	

Shooting By Period

Period	FG	FG%	3FG	3FG%	FT	FT%
3rd Qtr	2-11	18%	0-5	00%	5-6	83%
4th Qtr	7-17	41%	2-7	29%	2-2	100%
2nd Half	9-28	32%	2-12	17%	7-8	88%
Game	19-58	32.8%	4-19	21.1%	9-12	75.0%

Deadball Rebounds: 2,2
Last FG Half: IND 4th-01:24

Maryland 38

No.	Player	S	Pts	FG	3FG	FT	OR	DR	TR	PF	A	TO	Blk	Stl	Min	+/-
01	AUSTIN, SHAKIRA	F	2	1-3	0-0	0-0	0	2	2	3	0	1	0	1	9	0
05	CHARLES, KAILA	G	9	4-6	0-0	1-1	2	2	4	3	1	0	0	0	16	12
11	MIKESELL, TAYLOR	G	3	1-3	1-3	0-0	0	0	0	0	0	2	0	0	10	6
13	MASONIUS, FAITH	F	0	0-0	0-0	0-0	0	1	1	0	1	1	0	1	3	-2
14	MILLER, DIAMOND	G	10	4-8	2-3	0-0	1	0	1	1	1	0	0	0	16	10
15	OWUSU, ASHLEY	G	6	1-3	0-0	4-4	1	3	4	2	2	2	1	0	13	3
22	WATSON, BLAIR	G	0	0-2	0-2	0-0	0	5	5	1	0	0	0	1	17	13
24	JONES, STEPHANIE	F	6	3-6	0-0	0-0	3	3	6	2	1	1	0	0	16	13
32	VUJACIC, SARA	G	2	1-2	0-1	0-0	0	0	0	0	0	0	0	0	1	0
	TEAM		0	0-0	0-0	0-0	1	0	1	0	0	0	0	0	0	
TOTALS			38	15-33	3-9	5-5	8	16	24	12	6	7	1	3	100	

Shooting By Period

Period	FG	FG%	3FG	3FG%	FT	FT%
3rd Qtr	10-18	56%	1-5	20%	1-1	100%
4th Qtr	5-15	33%	2-4	50%	4-4	100%
2nd Half	15-33	45%	3-9	33%	5-5	100%
Game	26-63	41.3%	5-18	27.8%	9-10	90.0%

Deadball Rebounds: 1,0
Last FG Half: mar 4th-00:53

Game Notes:

Officials: Michael McConnell, Kevin Pethtel, Julie Krommenhoek

Start Time: 06:35 PM ET

End Time: 08:20 PM ET

Game Duration: 1:45

Neutral Court;

Score	1st	2nd	3rd	4th	TOT
IND	13	11	9	18	51
mar	16	12	22	16	66

Points from (This Period)	IND	mar
In the Paint	14	16
Off Turns	9	8
2nd Chance	7	6
Fast Break	0	3
Bench	8	18

Official Box Score
Indiana vs Maryland
Third Quarter Statistics Only
March 07, 2020 at Bankers Life Fieldhouse - Indianapolis, IN



Indiana 27

No.	Player	S	Pts	FG	3FG	FT	OR	DR	TR	PF	A	TO	Blk	Stl	Min	+/-
10	GULBE, ALEKSA	F	2	0-0	0-0	2-2	0	0	0	0	0	0	0	0	7	-11
13	PENN, JAELYNN	G	0	0-0	0-0	0-0	0	1	1	0	0	1	0	0	7	-13
14	PATBERG, ALI	G	2	1-4	0-2	0-0	0	0	0	2	0	1	0	2	10	-14
34	BERGER, GRACE	G	2	0-1	0-0	2-2	0	1	1	0	1	2	0	0	10	-13
50	WISE, BRENNAN	F	1	0-4	0-3	1-2	0	0	0	0	0	0	0	0	8	-7
03	WAGGONER, GRACE	G	0	0-0	0-0	0-0	0	0	0	0	0	0	0	0	3	1
11	WILSON, CHANEL	G	0	0-0	0-0	0-0	0	0	0	0	0	0	0	0	0	0
33	ALLEN, JORIE	F	0	0-0	0-0	0-0	0	0	0	0	0	0	0	0	0	0
54	HOLMES, MACKENZIE	F	2	1-2	0-0	0-0	1	0	1	1	0	0	0	0	5	-8
TEAM							1	1	2	0		1				
TOTALS			9	2-11	0-5	5-6	2	3	5	3	1	5	0	2	50	

Shooting By Period

Period	FG	FG%	3FG	3FG%	FT	FT%
2nd Half	0-0	0%	0-0	0%	0-0	0%
Game	19-58	32.8%	4-19	21.1%	9-12	75.0%

Deadball Rebounds: 2,2

Maryland 38

No.	Player	S	Pts	FG	3FG	FT	OR	DR	TR	PF	A	TO	Blk	Stl	Min	+/-
01	AUSTIN, SHAKIRA	F	2	1-2	0-0	0-0	0	2	2	3	0	1	0	1	7	5
05	CHARLES, KAILA	G	9	4-5	0-0	1-1	0	0	0	1	1	0	0	0	8	9
11	MIKESSELL, TAYLOR	G	3	1-3	1-3	0-0	0	0	0	0	0	1	0	0	8	6
22	WATSON, BLAIR	G	0	0-1	0-1	0-0	0	2	2	1	0	0	0	1	8	15
24	JONES, STEPHANIE	F	6	3-3	0-0	0-0	2	2	4	1	1	0	0	0	7	15
13	MASONIUS, FAITH	F	0	0-0	0-0	0-0	0	0	0	0	1	0	0	0	2	-2
14	MILLER, DIAMOND	G	2	1-4	0-1	0-0	1	0	1	0	1	0	0	0	6	12
15	OWUSU, ASHLEY	G	0	0-0	0-0	0-0	1	2	3	0	1	1	1	0	5	5
32	VUJACIC, SARA	G	0	0-0	0-0	0-0	0	0	0	0	0	0	0	0	0	0
TEAM							1	0	1	0		0				
TOTALS			22	10-18	1-5	1-1	5	8	13	6	5	3	1	2	50	

Shooting By Period

Period	FG	FG%	3FG	3FG%	FT	FT%
2nd Half	0-0	0%	0-0	0%	0-0	0%
Game	26-63	41.3%	5-18	27.8%	9-10	90.0%

Deadball Rebounds: 1,0

Game Notes:

Officials: Michael McConnell, Kevin Pethel, Julie Krommenhoek

Start Time: 06:35 PM ET

End Time: 08:20 PM ET

Game Duration: 1:45

Neutral Court;

Score	1st	2nd	3rd	4th	TOT
IND	13	11	9	18	51
mar	16	12	22	16	66

Points from (This Period)	IND	mar
In the Paint	4	14
Off Turns	2	8
2nd Chance	3	6
Fast Break	0	3
Bench	2	2

Official Play-By-Play
Indiana vs Maryland
Third Quarter
March 07, 2020 at Bankers Life Fieldhouse - Indianapolis, IN



Period 3

Starters:

Indiana: 10 GULBE,ALEKSA (F); 13 PENN,JAELYN (G); 14 PATBERG,ALI (G); 34 BERGER,GRACE (G); 50 WISE,BRENNA (F);

Maryland: 1 AUSTIN,SHAKIRA (F); 5 CHARLES,KAILA (G); 11 MIKESSELL,TAYLOR (G); 22 WATSON,BLAIR (G); 24 JONES,STEPHANIE (F);

Time	VISITORS: Indiana	Score	Margin	HOME: Maryland
10:00				SUB OUT: MASONIUS, FAITH
10:00				SUB OUT: MILLER, DIAMOND
10:00				SUB IN: WATSON, BLAIR
10:00				SUB IN: JONES, STEPHANIE
10:00	SUB OUT: HOLMES, MACKENZIE			
10:00	SUB IN: GULBE, ALEKSA			
09:49	GOOD! LAYUP by PATBERG, ALI	28-26	H 2	
09:49	ASSIST by BERGER, GRACE			
09:29		30-26	H 4	GOOD! JUMPER by AUSTIN, SHAKIRA
09:19	MISSED 3PTR by PATBERG, ALI			
09:15				REBOUND (DEF) by AUSTIN, SHAKIRA
09:10				MISSED 3PTR by WATSON, BLAIR
09:06	REBOUND (DEF) by PENN, JAELYN			
08:54	TURNOVER (LOSTBALL) by BERGER, GRACE			
08:54				STEAL by AUSTIN, SHAKIRA
08:38		32-26	H 6	GOOD! JUMPER by CHARLES, KAILA
08:38				ASSIST by JONES, STEPHANIE
08:23	TURNOVER (BADPASS) by BERGER, GRACE			
08:23				STEAL by WATSON, BLAIR
08:18				TURNOVER (BADPASS) by MIKESSELL, TAYLOR
08:18	STEAL by PATBERG, ALI			
08:11	MISSED LAYUP by BERGER, GRACE			
08:09				REBOUND (DEF) by AUSTIN, SHAKIRA
07:53				TURNOVER (LOSTBALL) by AUSTIN, SHAKIRA
07:53				SUB OUT: CHARLES, KAILA
07:53				SUB IN: MILLER, DIAMOND
07:26	MISSED LAYUP by WISE, BRENNA			
07:24				REBOUND (DEF) by JONES, STEPHANIE
07:08				MISSED JUMPER by AUSTIN, SHAKIRA
07:05				REBOUND (OFF) by JONES, STEPHANIE
07:05		34-26	H 8	GOOD! LAYUP by JONES, STEPHANIE
06:49	MISSED 3PTR by WISE, BRENNA			
06:47				REBOUND (DEF) by WATSON, BLAIR
06:38				MISSED LAYUP by MILLER, DIAMOND
06:35	REBOUND (DEF) by TEAM			
06:35	SUB OUT: GULBE, ALEKSA			
06:35	SUB IN: HOLMES, MACKENZIE			
06:25	FOUL (OFF) by PATBERG, ALI			
06:25	TURNOVER (OFFENSIVE) by PATBERG, ALI			
06:06				MISSED LAYUP by MILLER, DIAMOND
06:03				REBOUND (OFF) by JONES, STEPHANIE
06:03		36-26	H 10	GOOD! LAYUP by JONES, STEPHANIE
05:47				FOUL (PERSONAL) by AUSTIN, SHAKIRA
05:47				SUB OUT: AUSTIN, SHAKIRA
05:47				SUB IN: CHARLES, KAILA
05:31	MISSED JUMPER by PATBERG, ALI			
05:28				REBOUND (DEF) by JONES, STEPHANIE
05:19		38-26	H 12	GOOD! LAYUP by JONES, STEPHANIE
05:19				ASSIST by CHARLES, KAILA
05:10	TIMEOUT 30SEC			
05:10				
05:10	SUB OUT: WISE, BRENNA			
05:10	SUB IN: GULBE, ALEKSA			
04:45	TURNOVER (SHOTCLOCK) by TEAM			
04:45				
04:45				SUB OUT: MIKESSELL, TAYLOR
04:45				SUB IN: OWUSU, ASHLEY
04:29		40-26	H 14	GOOD! LAYUP by CHARLES, KAILA [PNT]
04:14	TURNOVER (OTHER) by PENN, JAELYN			
04:06				MISSED JUMPER by CHARLES, KAILA
04:03				REBOUND (OFF) by MILLER, DIAMOND
04:00				MISSED 3PTR by MILLER, DIAMOND
03:58				REBOUND (OFF) by OWUSU, ASHLEY
03:46		42-26	H 16	GOOD! LAYUP by MILLER, DIAMOND [PNT]
03:24	MISSED 3PTR by PATBERG, ALI			
03:20				REBOUND (DEF) by WATSON, BLAIR
03:15		44-26	H 18	GOOD! LAYUP by CHARLES, KAILA [FB]
03:15				ASSIST by OWUSU, ASHLEY
03:15	FOUL (PERSONAL) by HOLMES, MACKENZIE			
03:15	SUB OUT: PENN, JAELYN			

Time	VISITORS: Indiana	Score	Margin	HOME: Maryland
03:15	SUB OUT: HOLMES, MACKENZIE			
03:15	SUB IN: WAGGONER, GRACE			
03:15	SUB IN: WISE, BRENNNA			
03:15		45-26	H 19	GOOD! FT by CHARLES, KAILA [FB]
02:51				FOUL (PERSONAL) by JONES, STEPHANIE
02:51				SUB OUT: JONES, STEPHANIE
02:51				SUB IN: AUSTIN, SHAKIRA
02:51	GOOD! FT by GULBE, ALEKSA	45-27	H 18	
02:51	GOOD! FT by GULBE, ALEKSA	45-28	H 17	
02:43		47-28	H 19	GOOD! JUMPER by CHARLES, KAILA [PNT]
02:43				ASSIST by MILLER, DIAMOND
02:28				FOUL (PERSONAL) by WATSON, BLAIR
02:28				SUB OUT: WATSON, BLAIR
02:28				SUB IN: MIKESELL, TAYLOR
02:09	MISSED 3PTR by WISE, BRENNNA			
02:06				REBOUND (DEF) by OWUSU, ASHLEY
02:02				TURNOVER (BADPASS) by OWUSU, ASHLEY
02:02	STEAL by PATBERG, ALI			
01:54				FOUL (PERSONAL) by AUSTIN, SHAKIRA
01:54				SUB OUT: MILLER, DIAMOND
01:54				SUB IN: MASONIUS, FAITH
01:54	SUB OUT: GULBE, ALEKSA			
01:54	SUB IN: HOLMES, MACKENZIE			
01:41				FOUL (PERSONAL) by CHARLES, KAILA
01:41	GOOD! FT by BERGER, GRACE	47-29	H 18	
01:41	GOOD! FT by BERGER, GRACE	47-30	H 17	
01:28	FOUL (PERSONAL) by PATBERG, ALI			
01:22				MISSED 3PTR by MIKESELL, TAYLOR
01:19	REBOUND (DEF) by BERGER, GRACE			
01:13	MISSED LAYUP by HOLMES, MACKENZIE			
01:11	REBOUND (OFF) by HOLMES, MACKENZIE			
01:11	GOOD! LAYUP by HOLMES, MACKENZIE	47-32	H 15	
00:44		50-32	H 18	GOOD! 3PTR by MIKESELL, TAYLOR
00:44				ASSIST by MASONIUS, FAITH
00:31	MISSED 3PTR by WISE, BRENNNA			
00:31				BLOCK by OWUSU, ASHLEY
00:30	REBOUND (OFF) by TEAM			
00:26	SUB OUT: WAGGONER, GRACE			
00:26	SUB IN: PENN, JAELYNN			
00:26				FOUL (PERSONAL) by AUSTIN, SHAKIRA
00:26				SUB OUT: AUSTIN, SHAKIRA
00:26				SUB IN: MILLER, DIAMOND
00:26	SUB OUT: PATBERG, ALI			
00:26	SUB IN: WAGGONER, GRACE			
00:26	GOOD! FT by WISE, BRENNNA	50-33	H 17	
00:26	MISSED FT by WISE, BRENNNA			
00:25				REBOUND (DEF) by OWUSU, ASHLEY
00:01				MISSED 3PTR by MIKESELL, TAYLOR
00:00				REBOUND (OFF) by TEAM

Indiana 33, Maryland 50

Points from (This Period)	IND	mar
In the Paint	4	14
Off Turns	2	8
2nd Chance	3	6
Fast Break	0	3
Bench	2	2

Official Box Score
Indiana vs Maryland
Fourth Quarter Statistics Only
March 07, 2020 at Bankers Life Fieldhouse - Indianapolis, IN



Indiana 18

No.	Player	S	Pts	FG	3FG	FT	OR	DR	TR	PF	A	TO	Blk	Stl	Min	+/-
10	GULBE, ALEKSA	F	2	1-3	0-1	0-0	1	0	1	1	2	0	0	0	10	2
13	PENN, JAELYNN	G	0	0-1	0-1	0-0	0	0	0	0	1	0	0	0	1	0
14	PATBERG, ALI	G	3	1-5	1-2	0-0	0	0	0	1	0	0	0	0	9	0
34	BERGER, GRACE	G	4	1-3	0-1	2-2	0	1	1	1	2	1	0	1	10	2
50	WISE, BRENNIA	F	3	1-2	1-2	0-0	0	1	1	0	1	0	0	0	8	-1
03	WAGGONER, GRACE	G	0	0-0	0-0	0-0	0	0	0	0	0	0	0	0	1	2
11	WILSON, CHANEL	G	0	0-0	0-0	0-0	0	0	0	0	0	0	0	0	1	3
33	ALLEN, JORIE	F	0	0-0	0-0	0-0	0	0	0	0	0	0	0	0	0	0
54	HOLMES, MACKENZIE	F	6	3-3	0-0	0-0	1	1	2	2	0	0	0	1	10	2
TEAM							0	1	1	0		0				
TOTALS			18	7-17	2-7	2-2	2	4	6	5	6	1	0	2	50	

Shooting By Period

Period	FG	FG%	3FG	3FG%	FT	FT%
Game	19-58	32.8%	4-19	21.1%	9-12	75.0%

Deadball Rebounds: 2,2

Maryland 16

No.	Player	S	Pts	FG	3FG	FT	OR	DR	TR	PF	A	TO	Blk	Stl	Min	+/-
01	AUSTIN, SHAKIRA	F	0	0-1	0-0	0-0	0	0	0	0	0	0	0	0	2	-5
05	CHARLES, KAILA	G	0	0-1	0-0	0-0	2	2	4	2	0	0	0	0	8	3
11	MIKESELL, TAYLOR	G	0	0-0	0-0	0-0	0	0	0	0	0	1	0	0	2	0
22	WATSON, BLAIR	G	0	0-1	0-1	0-0	0	3	3	0	0	0	0	0	9	-2
24	JONES, STEPHANIE	F	0	0-3	0-0	0-0	1	1	2	1	0	1	0	0	9	-2
13	MASONIUS, FAITH	F	0	0-0	0-0	0-0	0	1	1	0	0	1	0	1	1	0
14	MILLER, DIAMOND	G	8	3-4	2-2	0-0	0	0	0	1	0	0	0	0	10	-2
15	OWUSU, ASHLEY	G	6	1-3	0-0	4-4	0	1	1	2	1	1	0	0	8	-2
32	VUJACIC, SARA	G	2	1-2	0-1	0-0	0	0	0	0	0	0	0	0	1	0
TEAM							0	0	0	0		0				
TOTALS			16	5-15	2-4	4-4	3	8	11	6	1	4	0	1	50	

Shooting By Period

Period	FG	FG%	3FG	3FG%	FT	FT%
Game	26-63	41.3%	5-18	27.8%	9-10	90.0%

Deadball Rebounds: 1,0

Game Notes:

Officials: Michael McConnell, Kevin Pethtel, Julie Krommenhoek

Start Time: 06:35 PM ET

End Time: 08:20 PM ET

Game Duration: 1:45

Neutral Court;

Score	1st	2nd	3rd	4th	TOT
IND	13	11	9	18	51
mar	16	12	22	16	66

Points from (This Period)	IND	mar
In the Paint	10	2
Off Turns	7	0
2nd Chance	4	0
Fast Break	0	0
Bench	6	16

Official Play-By-Play
Indiana vs Maryland
Fourth Quarter
March 07, 2020 at Bankers Life Fieldhouse - Indianapolis, IN



Period 4

Starters:

Indiana: 10 GULBE,ALEKSA (F); 13 PENN,JAELYNN (G); 14 PATBERG,ALI (G); 34 BERGER,GRACE (G); 50 WISE,BRENNA (F);

Maryland: 1 AUSTIN,SHAKIRA (F); 5 CHARLES,KAILA (G); 11 MIKESELL,TAYLOR (G); 22 WATSON,BLAIR (G); 24 JONES,STEPHANIE (F);

Time	VISITORS: Indiana	Score	Margin	HOME: Maryland
10:00				SUB OUT: MIKESELL, TAYLOR
10:00				SUB OUT: MASONIUS, FAITH
10:00				SUB IN: WATSON, BLAIR
10:00				SUB IN: JONES, STEPHANIE
10:00	SUB OUT: WAGGONER, GRACE			
10:00	SUB OUT: WISE, BRENNNA			
10:00	SUB IN: GULBE, ALEKSA			
10:00	SUB IN: PATBERG, ALI			
09:53		52-33	H 19	GOOD! JUMPER by OWUSU, ASHLEY
09:32	MISSED 3PTR by PENN, JAELYNN			
09:27	REBOUND (OFF) by GULBE, ALEKSA			
09:25	GOOD! LAYUP by HOLMES, MACKENZIE	52-35	H 17	
09:25	ASSIST by PENN, JAELYNN			
09:08				MISSED JUMPER by OWUSU, ASHLEY
09:06				REBOUND (OFF) by TEAM
09:06	FOUL (PERSONAL) by HOLMES, MACKENZIE			
09:04				MISSED LAYUP by JONES, STEPHANIE
09:01				REBOUND (OFF) by JONES, STEPHANIE
09:01				MISSED LAYUP by JONES, STEPHANIE
09:01	REBOUND (DEF) by TEAM			
08:53	MISSED 3PTR by GULBE, ALEKSA			
08:48				REBOUND (DEF) by WATSON, BLAIR
08:42				MISSED 3PTR by WATSON, BLAIR
08:41	REBOUND (DEF) by TEAM			
08:41				FOUL (PERSONAL) by CHARLES, KAILA
08:41	SUB OUT: PENN, JAELYNN			
08:41	SUB IN: WILSON, CHANEL			
08:19	GOOD! 3PTR by PATBERG, ALI	52-38	H 14	
08:19	ASSIST by BERGER, GRACE			
08:03	FOUL (PERSONAL) by PATBERG, ALI			
08:03	SUB OUT: WILSON, CHANEL			
08:03	SUB IN: WISE, BRENNNA			
08:03		53-38	H 15	GOOD! FT by OWUSU, ASHLEY
08:03		54-38	H 16	GOOD! FT by OWUSU, ASHLEY
07:49	MISSED 3PTR by WISE, BRENNNA			
07:47				REBOUND (DEF) by OWUSU, ASHLEY
07:46	FOUL (PERSONAL) by GULBE, ALEKSA			
07:28				MISSED LAYUP by OWUSU, ASHLEY
07:26				REBOUND (OFF) by CHARLES, KAILA
07:14				MISSED JUMPER by MILLER, DIAMOND
07:12	REBOUND (DEF) by TEAM			
07:12				FOUL (PERSONAL) by CHARLES, KAILA
07:12				SUB OUT: CHARLES, KAILA
07:12				SUB IN: AUSTIN, SHAKIRA
06:55	GOOD! JUMPER by HOLMES, MACKENZIE	54-40	H 14	
06:55	ASSIST by WISE, BRENNNA			
06:47				FOUL (OFF) by OWUSU, ASHLEY
06:47				TURNOVER (OFFENSIVE) by OWUSU, ASHLEY
06:31	GOOD! 3PTR by WISE, BRENNNA	54-43	H 11	
06:31	ASSIST by GULBE, ALEKSA			
06:24				TIMEOUT 30SEC
06:24				
06:24				SUB OUT: OWUSU, ASHLEY
06:24				SUB IN: MIKESELL, TAYLOR
06:12				MISSED LAYUP by AUSTIN, SHAKIRA
06:10	REBOUND (DEF) by BERGER, GRACE			
05:44	MISSED LAYUP by GULBE, ALEKSA			
05:41				REBOUND (DEF) by WATSON, BLAIR
05:18				SUB OUT: AUSTIN, SHAKIRA
05:18				SUB IN: CHARLES, KAILA
05:16				TURNOVER (BADPASS) by MIKESELL, TAYLOR
05:16	STEAL by HOLMES, MACKENZIE			
05:05	MISSED JUMPER by PATBERG, ALI			
05:01				REBOUND (DEF) by CHARLES, KAILA
04:47	FOUL (PERSONAL) by HOLMES, MACKENZIE			
04:47				SUB OUT: MIKESELL, TAYLOR
04:47				SUB IN: OWUSU, ASHLEY
04:42				MISSED JUMPER by JONES, STEPHANIE
04:39				REBOUND (OFF) by CHARLES, KAILA
04:38				MISSED LAYUP by CHARLES, KAILA

Time	VISITORS: Indiana	Score	Margin	HOME: Maryland
04:35	REBOUND (DEF) by HOLMES, MACKENZIE			
04:23	MISSED 3PTR by BERGER, GRACE			
04:17				REBOUND (DEF) by JONES, STEPHANIE
03:59		57-43	H 14	GOOD! 3PTR by MILLER, DIAMOND
03:39	MISSED LAYUP by PATBERG, ALI			
03:37				REBOUND (DEF) by WATSON, BLAIR
03:23		60-43	H 17	GOOD! 3PTR by MILLER, DIAMOND
03:11				FOUL (PERSONAL) by OWUSU, ASHLEY
02:56	MISSED 3PTR by PATBERG, ALI			
02:51				REBOUND (DEF) by CHARLES, KAILA
02:32		62-43	H 19	GOOD! LAYUP by MILLER, DIAMOND [PNT]
02:22	MISSED LAYUP by BERGER, GRACE			
02:20	REBOUND (OFF) by HOLMES, MACKENZIE			
02:19	GOOD! LAYUP by HOLMES, MACKENZIE	62-45	H 17	
02:19	TIMEOUT TEAM			
01:59				FOUL (OFF) by JONES, STEPHANIE
01:59				TURNOVER (OFFENSIVE) by JONES, STEPHANIE
01:43	GOOD! LAYUP by GULBE, ALEKSA	62-47	H 15	
01:43	ASSIST by BERGER, GRACE			
01:32	FOUL (PERSONAL) by BERGER, GRACE			
01:32		63-47	H 16	GOOD! FT by OWUSU, ASHLEY
01:32		64-47	H 17	GOOD! FT by OWUSU, ASHLEY
01:24	GOOD! LAYUP by BERGER, GRACE	64-49	H 15	
01:24	ASSIST by GULBE, ALEKSA			
01:12				TIMEOUT 30SEC
01:12				SUB OUT: WATSON, BLAIR
01:12				SUB OUT: JONES, STEPHANIE
01:12				SUB IN: MASONIUS, FAITH
01:12				SUB IN: VUJACIC, SARA
00:53		66-49	H 17	GOOD! JUMPER by VUJACIC, SARA
00:53				ASSIST by OWUSU, ASHLEY
00:47	MISSED LAYUP by PATBERG, ALI			
00:47				REBOUND (DEF) by MASONIUS, FAITH
00:44				TURNOVER (LOSTBALL) by MASONIUS, FAITH
00:44	STEAL by BERGER, GRACE			
00:36				FOUL (PERSONAL) by MILLER, DIAMOND
00:36	SUB OUT: PATBERG, ALI			
00:36	SUB IN: WAGGONER, GRACE			
00:36	GOOD! FT by BERGER, GRACE	66-50	H 16	
00:36	GOOD! FT by BERGER, GRACE	66-51	H 15	
00:19				MISSED 3PTR by VUJACIC, SARA
00:15	REBOUND (DEF) by WISE, BRENNA			
00:06	TURNOVER (BADPASS) by BERGER, GRACE			
00:06				STEAL by MASONIUS, FAITH

Indiana 51, Maryland 66

Points from (This Period)	IND	mar
In the Paint	10	2
Off Turns	7	0
2nd Chance	4	0
Fast Break	0	0
Bench	6	16

Official Scoring/Possession Reference Chart
Indiana vs Maryland
Period 1
March 07, 2020 at Bankers Life Fieldhouse - Indianapolis, IN



Period 1

Starters:

Indiana: 10 GULBE,ALEKSA (F); 13 PENN,JAELYNN (G); 14 PATBERG,ALI (G); 34 BERGER,GRACE (G); 50 WISE,BRENNA (F);

Maryland: 1 AUSTIN,SHAKIRA (F); 5 CHARLES,KAILA (G); 11 MIKESELL,TAYLOR (G); 22 WATSON,BLAIR (G); 24 JONES,STEPHANIE (F);

Time	VISITORS: Indiana	Score	Margin	HOME: Maryland
09:48		2-0	H 2	GOOD! JUMPER by CHARLES, KAILA
09:31	GOOD! LAYUP by GULBE, ALEKSA	2-2	T	
09:16		4-2	H 2	GOOD! LAYUP by JONES, STEPHANIE
09:16		5-2	H 3	GOOD! FT by JONES, STEPHANIE
08:57	GOOD! LAYUP by BERGER, GRACE	5-4	H 1	
08:23	GOOD! JUMPER by PENN, JAELYNN	5-6	V 1	
08:08		7-6	H 1	GOOD! JUMPER by AUSTIN, SHAKIRA [PNT]
07:27	GOOD! 3PTR by PATBERG, ALI	7-9	V 2	
05:58		9-9	T	GOOD! JUMPER by MIKESELL, TAYLOR [FB]
05:24		12-9	H 3	GOOD! 3PTR by MILLER, DIAMOND [FB]
04:45	GOOD! JUMPER by PATBERG, ALI	12-11	H 1	
04:15	GOOD! LAYUP by HOLMES, MACKENZIE	12-13	V 1	
01:38		14-13	H 1	GOOD! LAYUP by OWUSU, ASHLEY
01:11		16-13	H 3	GOOD! LAYUP by OWUSU, ASHLEY [FB]

Indiana 13, Maryland 16

Official Scoring/Possession Reference Chart
Indiana vs Maryland
Period 2
March 07, 2020 at Bankers Life Fieldhouse - Indianapolis, IN



Period 2

Starters:

Indiana: 10 GULBE,ALEKSA (F); 13 PENN,JAELYNN (G); 14 PATBERG,ALI (G); 34 BERGER,GRACE (G); 50 WISE,BRENNA (F);

Maryland: 1 AUSTIN,SHAKIRA (F); 5 CHARLES,KAILA (G); 11 MIKESSELL,TAYLOR (G); 22 WATSON,BLAIR (G); 24 JONES,STEPHANIE (F);

Time	VISITORS: Indiana	Score	Margin	HOME: Maryland
08:47		19-13	H 6	GOOD! 3PTR by WATSON, BLAIR
08:15	GOOD! JUMPER by BERGER, GRACE	19-15	H 4	
08:07		20-15	H 5	GOOD! FT by OWUSU, ASHLEY [FB]
08:07		21-15	H 6	GOOD! FT by OWUSU, ASHLEY [FB]
07:54	GOOD! LAYUP by PATBERG, ALI	21-17	H 4	
06:51	GOOD! FT by PATBERG, ALI	21-18	H 3	
06:14	GOOD! 3PTR by PATBERG, ALI	21-21	T	
05:56		23-21	H 2	GOOD! LAYUP by MILLER, DIAMOND
05:24		25-21	H 4	GOOD! LAYUP by AUSTIN, SHAKIRA [FB/PNT]
05:24		26-21	H 5	GOOD! FT by AUSTIN, SHAKIRA [FB]
04:50		28-21	H 7	GOOD! JUMPER by OWUSU, ASHLEY
01:52	GOOD! FT by WISE, BRENNA	28-22	H 6	
00:06	GOOD! LAYUP by WISE, BRENNA [PNT]	28-24	H 4	

Indiana 24, Maryland 28

Official Scoring/Possession Reference Chart
Indiana vs Maryland
Period 3
March 07, 2020 at Bankers Life Fieldhouse - Indianapolis, IN



Period 3

Starters:

Indiana: 10 GULBE,ALEKSA (F); 13 PENN,JAELYN (G); 14 PATBERG,ALI (G); 34 BERGER,GRACE (G); 50 WISE,BRENNA (F);

Maryland: 1 AUSTIN,SHAKIRA (F); 5 CHARLES,KAILA (G); 11 MIKESELL,TAYLOR (G); 22 WATSON,BLAIR (G); 24 JONES,STEPHANIE (F);

Time	VISITORS: Indiana	Score	Margin	HOME: Maryland
09:49	GOOD! LAYUP by PATBERG, ALI	28-26	H 2	
09:29		30-26	H 4	GOOD! JUMPER by AUSTIN, SHAKIRA
08:38		32-26	H 6	GOOD! JUMPER by CHARLES, KAILA
07:05		34-26	H 8	GOOD! LAYUP by JONES, STEPHANIE
06:03		36-26	H 10	GOOD! LAYUP by JONES, STEPHANIE
05:19		38-26	H 12	GOOD! LAYUP by JONES, STEPHANIE
04:29		40-26	H 14	GOOD! LAYUP by CHARLES, KAILA [PNT]
03:46		42-26	H 16	GOOD! LAYUP by MILLER, DIAMOND [PNT]
03:15		44-26	H 18	GOOD! LAYUP by CHARLES, KAILA [FB]
03:15		45-26	H 19	GOOD! FT by CHARLES, KAILA [FB]
02:51	GOOD! FT by GULBE, ALEKSA	45-27	H 18	
02:51	GOOD! FT by GULBE, ALEKSA	45-28	H 17	
02:43		47-28	H 19	GOOD! JUMPER by CHARLES, KAILA [PNT]
01:41	GOOD! FT by BERGER, GRACE	47-29	H 18	
01:41	GOOD! FT by BERGER, GRACE	47-30	H 17	
01:11	GOOD! LAYUP by HOLMES, MACKENZIE	47-32	H 15	
00:44		50-32	H 18	GOOD! 3PTR by MIKESELL, TAYLOR
00:26	GOOD! FT by WISE, BRENNA	50-33	H 17	

Indiana 33, Maryland 50

Official Scoring/Possession Reference Chart
Indiana vs Maryland
Period 4
March 07, 2020 at Bankers Life Fieldhouse - Indianapolis, IN



Period 4

Starters:

Indiana: 10 GULBE,ALEKSA (F); 13 PENN,JAELYN (G); 14 PATBERG,ALI (G); 34 BERGER,GRACE (G); 50 WISE,BRENNA (F);

Maryland: 1 AUSTIN,SHAKIRA (F); 5 CHARLES,KAILA (G); 11 MIKESSELL,TAYLOR (G); 22 WATSON,BLAIR (G); 24 JONES,STEPHANIE (F);

Time	VISITORS: Indiana	Score	Margin	HOME: Maryland
09:53		52-33	H 19	GOOD! JUMPER by OWUSU, ASHLEY
09:25	GOOD! LAYUP by HOLMES, MACKENZIE	52-35	H 17	
08:19	GOOD! 3PTR by PATBERG, ALI	52-38	H 14	
08:03		53-38	H 15	GOOD! FT by OWUSU, ASHLEY
08:03		54-38	H 16	GOOD! FT by OWUSU, ASHLEY
06:55	GOOD! JUMPER by HOLMES, MACKENZIE	54-40	H 14	
06:31	GOOD! 3PTR by WISE, BRENNA	54-43	H 11	
03:59		57-43	H 14	GOOD! 3PTR by MILLER, DIAMOND
03:23		60-43	H 17	GOOD! 3PTR by MILLER, DIAMOND
02:32		62-43	H 19	GOOD! LAYUP by MILLER, DIAMOND [PNT]
02:19	GOOD! LAYUP by HOLMES, MACKENZIE	62-45	H 17	
01:43	GOOD! LAYUP by GULBE, ALEKSA	62-47	H 15	
01:32		63-47	H 16	GOOD! FT by OWUSU, ASHLEY
01:32		64-47	H 17	GOOD! FT by OWUSU, ASHLEY
01:24	GOOD! LAYUP by BERGER, GRACE	64-49	H 15	
00:53		66-49	H 17	GOOD! JUMPER by VUJACIC, SARA
00:36	GOOD! FT by BERGER, GRACE	66-50	H 16	
00:36	GOOD! FT by BERGER, GRACE	66-51	H 15	

Indiana 51, Maryland 66

Official Substitutions Log
Indiana vs Maryland
Period 1
March 07, 2020 at Bankers Life Fieldhouse - Indianapolis, IN



VISITORS: Indiana	Time	Score	HOME: Maryland
10 GULBE,ALEKSA			1 AUSTIN,SHAKIRA
13 PENN,JAELYNN			5 CHARLES,KAILA
14 PATBERG,ALI			11 MIKESELL,TAYLOR
34 BERGER,GRACE			22 WATSON,BLAIR
50 WISE,BRENNA			24 JONES,STEPHANIE
	08:37	4-5	SUB OUT: WATSON,BLAIR
	08:37		SUB IN: MILLER,DIAMOND
SUB OUT: 10 GULBE,ALEKSA	06:20	9-7	
SUB IN: 54 HOLMES,MACKENZIE	06:20		
	03:46	13-12	SUB OUT: JONES,STEPHANIE
	03:46		SUB IN: OWUSU,ASHLEY
SUB OUT: 13 PENN,JAELYNN	03:46		
SUB OUT: 50 WISE,BRENNA	03:46		
SUB IN: 3 WAGGONER,GRACE	03:46		
SUB IN: 10 GULBE,ALEKSA	03:46		
	01:38	13-14	SUB OUT: AUSTIN,SHAKIRA
	01:38		SUB OUT: MILLER,DIAMOND
	01:38		SUB IN: MASONIUS,FAITH
	01:38		SUB IN: WATSON,BLAIR
SUB OUT: 3 WAGGONER,GRACE	01:38		
SUB OUT: 14 PATBERG,ALI	01:38		
SUB OUT: 54 HOLMES,MACKENZIE	01:38		
SUB IN: 11 WILSON,CHANEL	01:38		
SUB IN: 13 PENN,JAELYNN	01:38		
SUB IN: 50 WISE,BRENNA	01:38		
SUB OUT: 11 WILSON,CHANEL	00:45	13-16	
SUB OUT: 34 BERGER,GRACE	00:45		
SUB IN: 3 WAGGONER,GRACE	00:45		
SUB IN: 14 PATBERG,ALI	00:45		

Indiana 13, Maryland 16

Official Substitutions Log
Indiana vs Maryland
Period 2
March 07, 2020 at Bankers Life Fieldhouse - Indianapolis, IN



VISITORS: Indiana	Time	Score	HOME: Maryland
10 GULBE,ALEKSA			1 AUSTIN,SHAKIRA
13 PENN,JAELYNN			5 CHARLES,KAILA
14 PATBERG,ALI			11 MIKESELL,TAYLOR
34 BERGER,GRACE			22 WATSON,BLAIR
50 WISE,BRENNA			24 JONES,STEPHANIE
	10:00	-	SUB OUT: MASONIUS,FAITH
	10:00		SUB IN: JONES,STEPHANIE
SUB OUT: 3 WAGGONER,GRACE	10:00		
SUB IN: 34 BERGER,GRACE	10:00		
	08:07	15-19	SUB OUT: CHARLES,KAILA
	08:07		SUB IN: AUSTIN,SHAKIRA
SUB OUT: 10 GULBE,ALEKSA	08:07		
SUB IN: 54 HOLMES,MACKENZIE	08:07		
	08:07		SUB OUT: MIKESELL,TAYLOR
	08:07		SUB IN: MILLER,DIAMOND
	07:37	17-21	SUB OUT: WATSON,BLAIR
	07:37		SUB IN: CHARLES,KAILA
	06:51	17-21	SUB OUT: OWUSU,ASHLEY
	06:51		SUB IN: MIKESELL,TAYLOR
	05:24	21-25	SUB OUT: MILLER,DIAMOND
	05:24		SUB IN: OWUSU,ASHLEY
SUB OUT: 50 WISE,BRENNA	05:24		
SUB OUT: 54 HOLMES,MACKENZIE	05:24		
SUB IN: 10 GULBE,ALEKSA	05:24		
SUB IN: 33 ALLEN,JORIE	05:24		
SUB OUT: 10 GULBE,ALEKSA	05:03	21-26	
SUB IN: 54 HOLMES,MACKENZIE	05:03		
	03:45	21-28	SUB OUT: AUSTIN,SHAKIRA
	03:45		SUB IN: MILLER,DIAMOND
SUB OUT: 33 ALLEN,JORIE	03:45		
SUB OUT: 54 HOLMES,MACKENZIE	03:45		
SUB IN: 10 GULBE,ALEKSA	03:45		
SUB IN: 50 WISE,BRENNA	03:45		
	01:52	21-28	SUB OUT: MILLER,DIAMOND
	01:52		SUB OUT: JONES,STEPHANIE
	01:52		SUB IN: AUSTIN,SHAKIRA
	01:52		SUB IN: MASONIUS,FAITH
SUB OUT: 10 GULBE,ALEKSA	01:52		
SUB IN: 54 HOLMES,MACKENZIE	01:52		
	01:13	22-28	SUB OUT: OWUSU,ASHLEY
	01:13		SUB IN: MILLER,DIAMOND

Indiana 24, Maryland 28

Official Substitutions Log
Indiana vs Maryland
Period 3
March 07, 2020 at Bankers Life Fieldhouse - Indianapolis, IN



VISITORS: Indiana	Time	Score	HOME: Maryland
10 GULBE,ALEKSA			1 AUSTIN,SHAKIRA
13 PENN,JAELYNN			5 CHARLES,KAILA
14 PATBERG,ALI			11 MIKESELL,TAYLOR
34 BERGER,GRACE			22 WATSON,BLAIR
50 WISE,BRENNA			24 JONES,STEPHANIE
	10:00	-	SUB OUT: MASONIUS,FAITH
	10:00		SUB OUT: MILLER,DIAMOND
	10:00		SUB IN: WATSON,BLAIR
	10:00		SUB IN: JONES,STEPHANIE
SUB OUT: 54 HOLMES,MACKENZIE	10:00		
SUB IN: 10 GULBE,ALEKSA	10:00		
	07:53	26-32	SUB OUT: CHARLES,KAILA
	07:53		SUB IN: MILLER,DIAMOND
SUB OUT: 10 GULBE,ALEKSA	06:35	26-34	
SUB IN: 54 HOLMES,MACKENZIE	06:35		
	05:47	26-36	SUB OUT: AUSTIN,SHAKIRA
	05:47		SUB IN: CHARLES,KAILA
SUB OUT: 50 WISE,BRENNA	05:10	26-38	
SUB IN: 10 GULBE,ALEKSA	05:10		
	04:45	26-38	SUB OUT: MIKESELL,TAYLOR
	04:45		SUB IN: OWUSU,ASHLEY
SUB OUT: 13 PENN,JAELYNN	03:15	26-44	
SUB OUT: 54 HOLMES,MACKENZIE	03:15		
SUB IN: 3 WAGGONER,GRACE	03:15		
SUB IN: 50 WISE,BRENNA	03:15		
	02:51	26-45	SUB OUT: JONES,STEPHANIE
	02:51		SUB IN: AUSTIN,SHAKIRA
	02:28	28-47	SUB OUT: WATSON,BLAIR
	02:28		SUB IN: MIKESELL,TAYLOR
	01:54	28-47	SUB OUT: MILLER,DIAMOND
	01:54		SUB IN: MASONIUS,FAITH
SUB OUT: 10 GULBE,ALEKSA	01:54		
SUB IN: 54 HOLMES,MACKENZIE	01:54		
SUB OUT: 3 WAGGONER,GRACE	00:26	32-50	
SUB IN: 13 PENN,JAELYNN	00:26		
	00:26		SUB OUT: AUSTIN,SHAKIRA
	00:26		SUB IN: MILLER,DIAMOND
SUB OUT: 14 PATBERG,ALI	00:26		
SUB IN: 3 WAGGONER,GRACE	00:26		

Indiana 33, Maryland 50

Official Substitutions Log
Indiana vs Maryland
Period 4
March 07, 2020 at Bankers Life Fieldhouse - Indianapolis, IN



VISITORS: Indiana	Time	Score	HOME: Maryland
10 GULBE,ALEKSA			1 AUSTIN,SHAKIRA
13 PENN,JAELYNN			5 CHARLES,KAILA
14 PATBERG,ALI			11 MIKESELL,TAYLOR
34 BERGER,GRACE			22 WATSON,BLAIR
50 WISE,BRENNA			24 JONES,STEPHANIE
	10:00	-	SUB OUT: MIKESELL,TAYLOR
	10:00		SUB OUT: MASONIUS,FAITH
	10:00		SUB IN: WATSON,BLAIR
	10:00		SUB IN: JONES,STEPHANIE
SUB OUT: 3 WAGGONER,GRACE	10:00		
SUB OUT: 50 WISE,BRENNA	10:00		
SUB IN: 10 GULBE,ALEKSA	10:00		
SUB IN: 14 PATBERG,ALI	10:00		
SUB OUT: 13 PENN,JAELYNN	08:41	35-52	
SUB IN: 11 WILSON,CHANEL	08:41		
SUB OUT: 11 WILSON,CHANEL	08:03	38-52	
SUB IN: 50 WISE,BRENNA	08:03		
	07:12	38-54	SUB OUT: CHARLES,KAILA
	07:12		SUB IN: AUSTIN,SHAKIRA
	06:24	43-54	SUB OUT: OWUSU,ASHLEY
	06:24		SUB IN: MIKESELL,TAYLOR
	05:18	43-54	SUB OUT: AUSTIN,SHAKIRA
	05:18		SUB IN: CHARLES,KAILA
	04:47	43-54	SUB OUT: MIKESELL,TAYLOR
	04:47		SUB IN: OWUSU,ASHLEY
	01:12	49-64	SUB OUT: WATSON,BLAIR
	01:12		SUB OUT: JONES,STEPHANIE
	01:12		SUB IN: MASONIUS,FAITH
	01:12		SUB IN: VUJACIC,SARA
SUB OUT: 14 PATBERG,ALI	00:36	49-66	
SUB IN: 3 WAGGONER,GRACE	00:36		

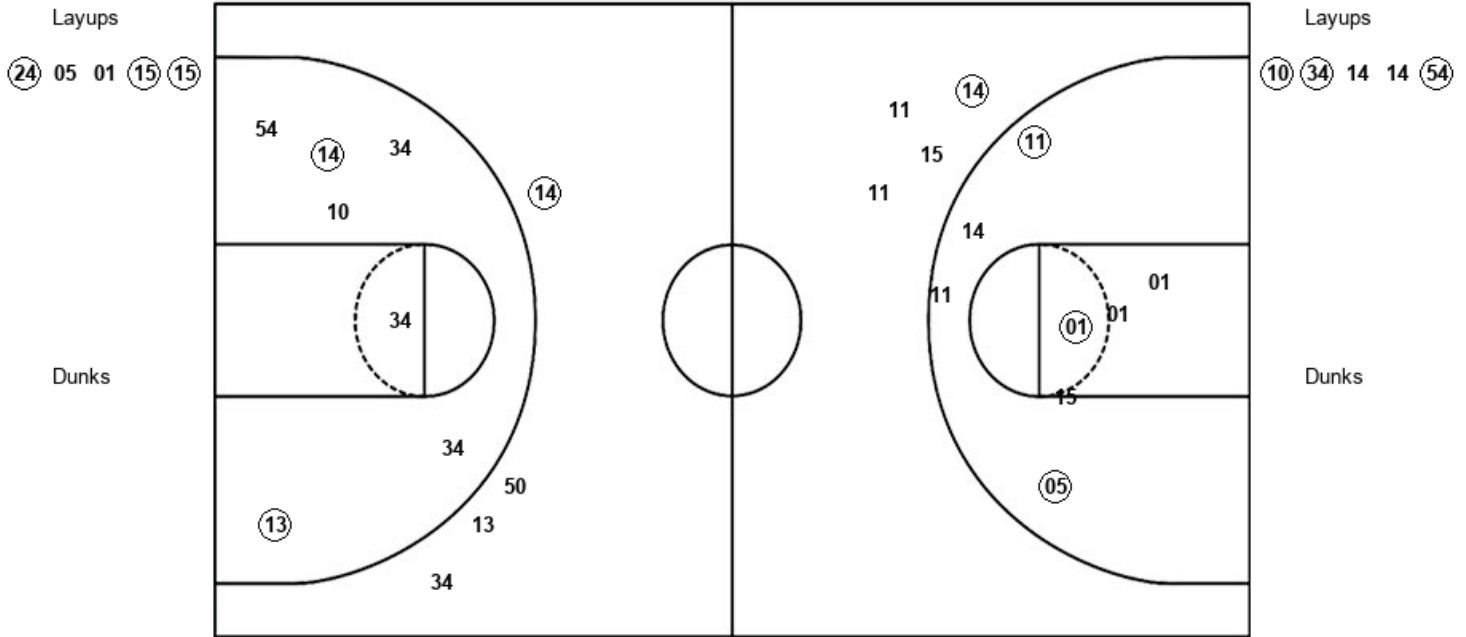
Indiana 51, Maryland 66

Official Shot Chart
Indiana vs Maryland
 PERIOD 1 Shots
 March 07, 2020 at Bankers Life Fieldhouse - Indianapolis, IN



Maryland

Indiana



mar : Period 1	Made	Att	Pct
Layups	3	5	60.0
Dunks	0	0	0
2PT Field Goals	6	13	46.2
3PT Field Goals	1	4	25.0
Total Field Goals	7	17	41.2

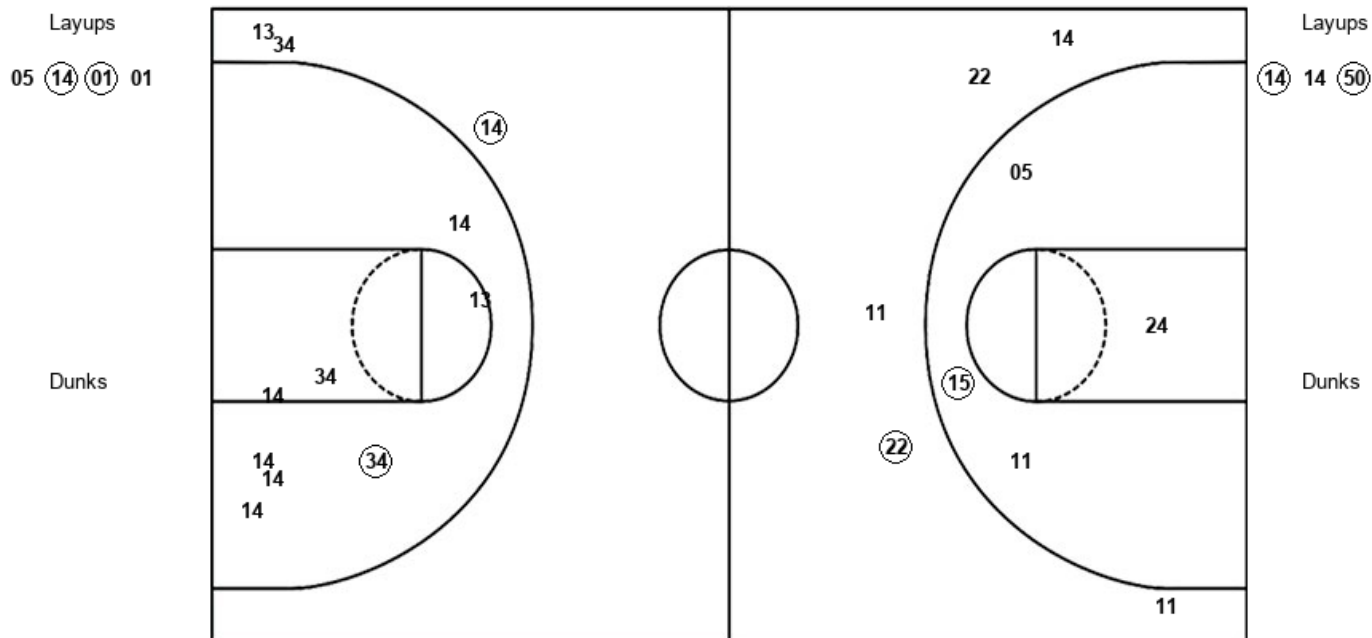
IND : Period 1	Made	Att	Pct
Layups	3	5	60.0
Dunks	0	0	0
2PT Field Goals	5	12	41.7
3PT Field Goals	1	4	25.0
Total Field Goals	6	16	37.5

Official Shot Chart
Indiana vs Maryland
 PERIOD 2 Shots
 March 07, 2020 at Bankers Life Fieldhouse - Indianapolis, IN



Maryland

Indiana



mar : Period 2	Made	Att	Pct
Layups	2	4	50.0
Dunks	0	0	0
2PT Field Goals	3	8	37.5
3PT Field Goals	1	5	20.0
Total Field Goals	4	13	30.8

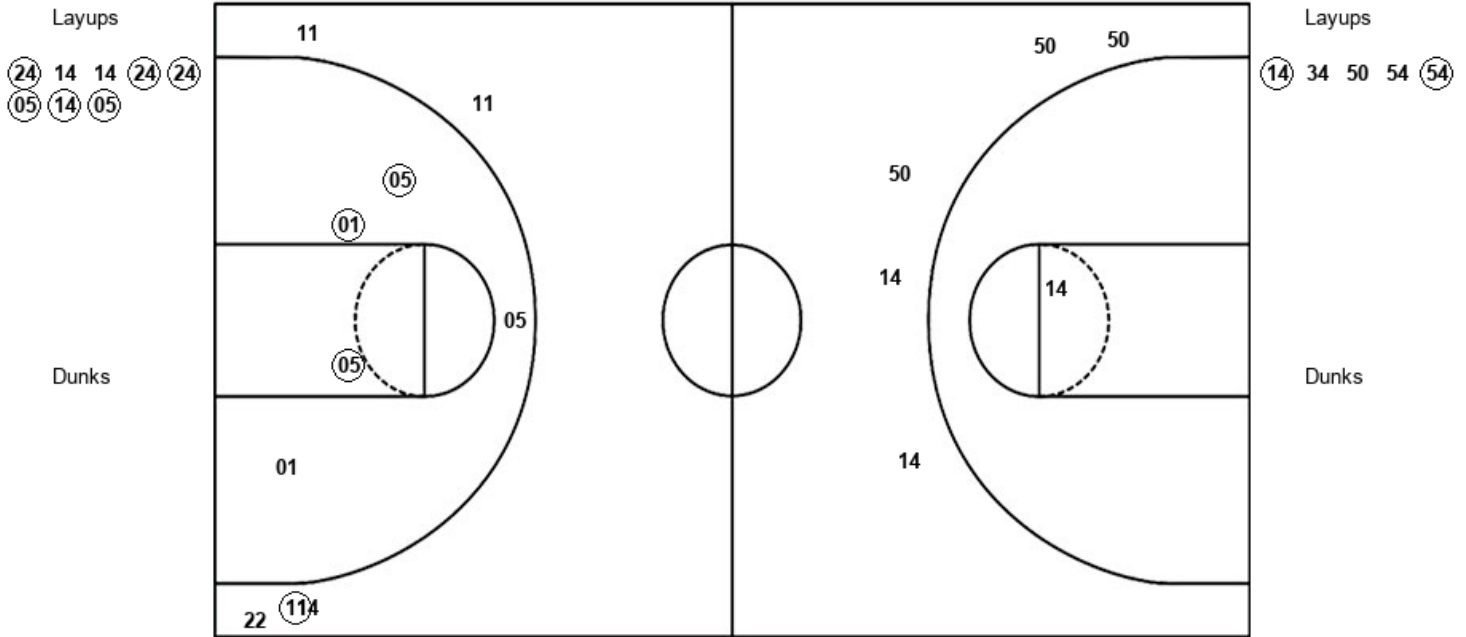
IND : Period 2	Made	Att	Pct
Layups	2	3	66.7
Dunks	0	0	0
2PT Field Goals	3	11	27.3
3PT Field Goals	1	3	33.3
Total Field Goals	4	14	28.6

Official Shot Chart
Indiana vs Maryland
 PERIOD 3 Shots
 March 07, 2020 at Bankers Life Fieldhouse - Indianapolis, IN



Maryland

Indiana



mar : Period 3	Made	Att	Pct
Layups	6	8	75.0
Dunks	0	0	0
2PT Field Goals	9	13	69.2
3PT Field Goals	1	5	20.0
Total Field Goals	10	18	55.6

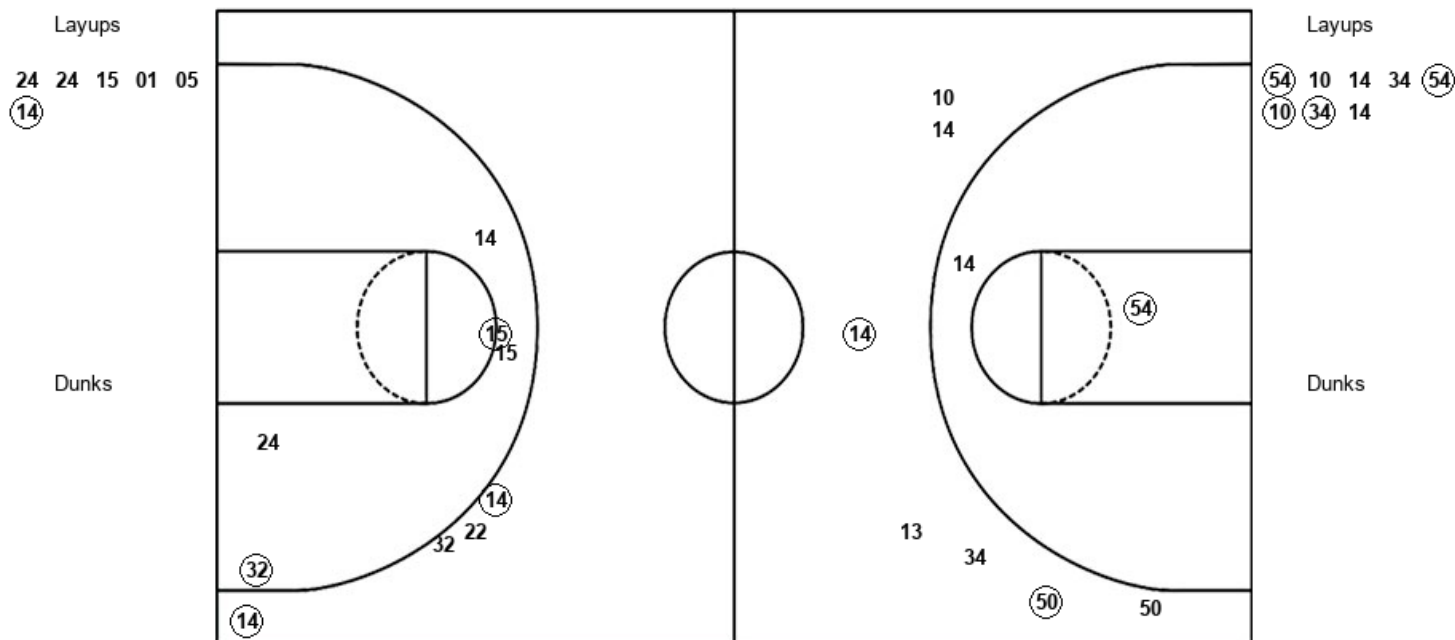
IND : Period 3	Made	Att	Pct
Layups	2	5	40.0
Dunks	0	0	0
2PT Field Goals	2	6	33.3
3PT Field Goals	0	5	00.0
Total Field Goals	2	11	18.2

Official Shot Chart
Indiana vs Maryland
 PERIOD 4 Shots
 March 07, 2020 at Bankers Life Fieldhouse - Indianapolis, IN



Maryland

Indiana



mar : Period 4	Made	Att	Pct
Layups	1	6	16.7
Dunks	0	0	0
2PT Field Goals	3	11	27.3
3PT Field Goals	2	4	50.0
Total Field Goals	5	15	33.3

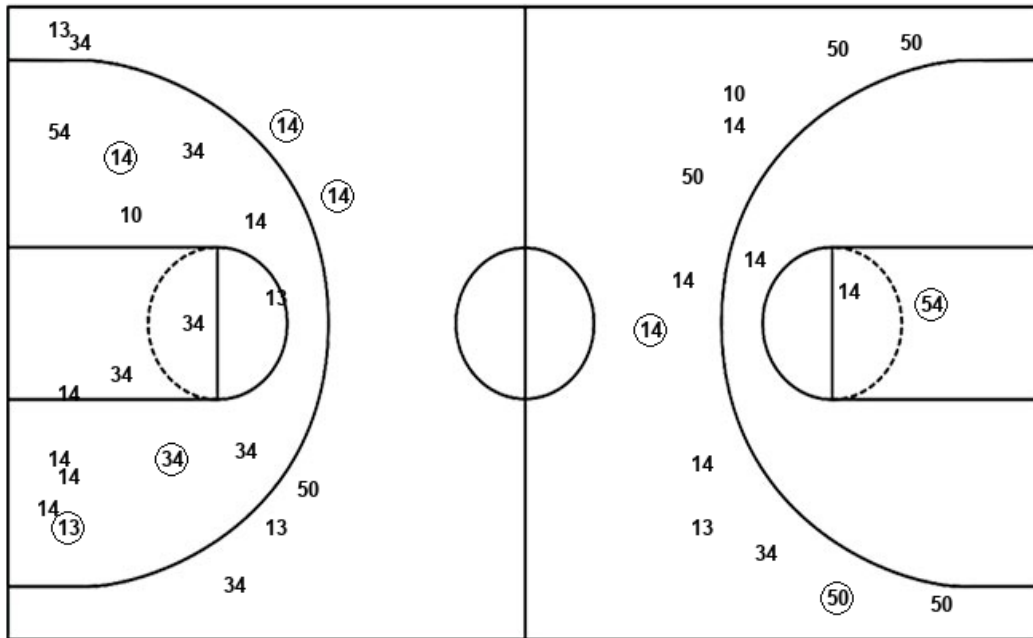
IND : Period 4	Made	Att	Pct
Layups	4	8	50.0
Dunks	0	0	0
2PT Field Goals	5	10	50.0
3PT Field Goals	2	7	28.6
Total Field Goals	7	17	41.2

Official Shot Chart
Indiana vs Maryland
Indiana Team Shots
March 07, 2020 at Bankers Life Fieldhouse - Indianapolis, IN



Layups

Dunks



Layups

Dunks

IND : Period 1	Made	Att	Pct
Layups	3	5	60.0
Dunks	0	0	0
2PT Field Goals	5	12	41.7
3PT Field Goals	1	4	25.0
Total Field Goals	6	16	37.5

IND : Period 3	Made	Att	Pct
Layups	2	5	40.0
Dunks	0	0	0
2PT Field Goals	2	6	33.3
3PT Field Goals	0	5	00.0
Total Field Goals	2	11	18.2

IND : Period 2	Made	Att	Pct
Layups	2	3	66.7
Dunks	0	0	0
2PT Field Goals	3	11	27.3
3PT Field Goals	1	3	33.3
Total Field Goals	4	14	28.6

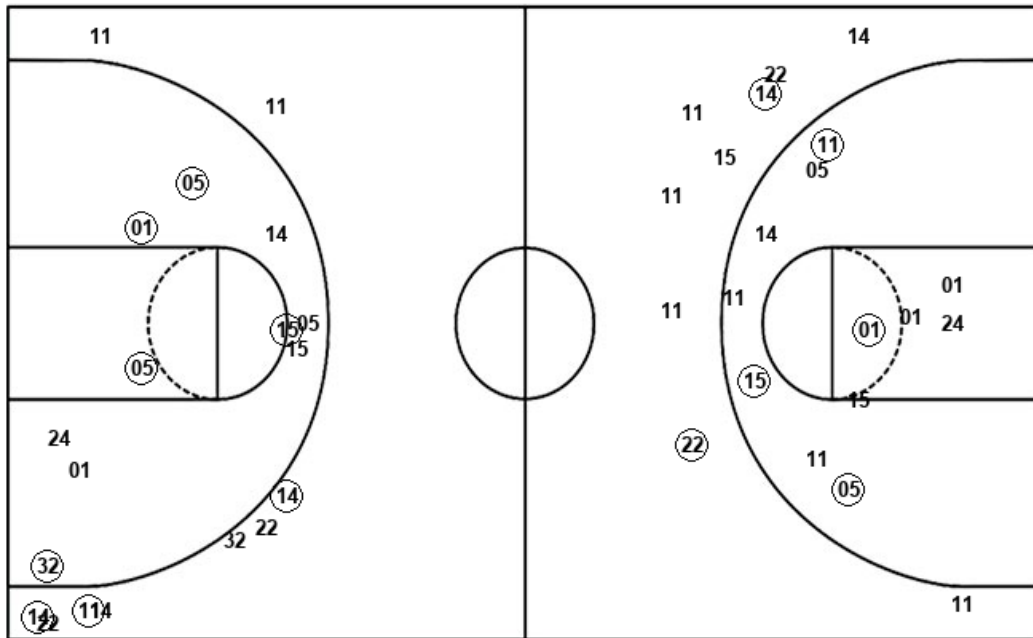
IND : Period 4	Made	Att	Pct
Layups	4	8	50.0
Dunks	0	0	0
2PT Field Goals	5	10	50.0
3PT Field Goals	2	7	28.6
Total Field Goals	7	17	41.2

Official Shot Chart
Indiana vs Maryland
Maryland Team Shots
March 07, 2020 at Bankers Life Fieldhouse - Indianapolis, IN



Layups

Dunks



Layups

Dunks

(24) 05 01 (15) (15)
 05 (14) (01) 01 (24)
 14 14 (24) (24) (05)
 (14) (05) 24 24 15
 01 05 (14)

mar : Period 1	Made	Att	Pct
Layups	3	5	60.0
Dunks	0	0	0
2PT Field Goals	6	13	46.2
3PT Field Goals	1	4	25.0
Total Field Goals	7	17	41.2

mar : Period 3	Made	Att	Pct
Layups	6	8	75.0
Dunks	0	0	0
2PT Field Goals	9	13	69.2
3PT Field Goals	1	5	20.0
Total Field Goals	10	18	55.6

mar : Period 2	Made	Att	Pct
Layups	2	4	50.0
Dunks	0	0	0
2PT Field Goals	3	8	37.5
3PT Field Goals	1	5	20.0
Total Field Goals	4	13	30.8

mar : Period 4	Made	Att	Pct
Layups	1	6	16.7
Dunks	0	0	0
2PT Field Goals	3	11	27.3
3PT Field Goals	2	4	50.0
Total Field Goals	5	15	33.3