



### BIG 12 CONFERENCE

400 East John Carpenter Freeway  
Irving, TX 75062  
469/524-1000  
469/524-1045 - Fax  
www.big12sports.com

Commissioner	Dan Beebe
Deputy Commissioner	Tim Weiser
Senior Associate Commissioner	Tim Allen
Senior Associate Commissioner	Dru Hancock
Associate Commissioner -	
Men's Basketball & Game Management	John Underwood
Chief Financial Officer	Steve Pace
Assistant Commissioner - Communications	Bob Burda
Assistant Commissioner - Events & Human Resources	Brad Clements
Assistant Commissioner -	
Governance, Compliance & Academics	Lori Ebihara
Assistant Commissioner - Championships	Dayna Scherf
Assistant Commissioner - Football & Student Services	Edward T. Stewart
Director of Compliance	Keri Boyce
Director of Communications	Rob Carolla
Director of Football Championship	Donnie Duncan
Director of Marketing	Maark Keith
Coordinator of Football Officials	Walt Anderson
Associate Director of Communications	Joni Lehmann
Assistant Director of Communications	Carmen Branch
Assistant Director of Video Services	Sean Hollister
Internet Services Coordinator	Kiron Andersen
Championships Manager	Blair Beneke
Business and Ticket Manager	Tim Frick
Executive Assistant to the Commissioner/	
Manager of Executive Affairs	Melanie Ellis
Administrative Assistant	Regina Everett
Administrative Assistant	Tracy Hunt
Administrative Assistant	Valerie Rocha
Administrative Assistant	Brad Simmons
Receptionist/Administrative Assistant	Michelle Peterson
Will Hancock Communications Assistant	Felicia Michael
Will Hancock Communications Assistant	Bonnie Ryan
Internet Services Assistant	Melanie Weiser

### CREDITS

The 2009 Big 12 Baseball Media Guide is a publication of the Big 12 communications staff using InDesign CS2, Photoshop CS2 and Microsoft Word.

<b>Editor:</b>	Carmen Branch
<b>Layout &amp; Design:</b>	Carmen Branch and Bonnie Ryan
<b>Page Design Assistance:</b>	Felicia Michael
<b>Editorial Assistance:</b>	Bob Burda, Rob Carolla, Joni Lehmann, Felicia Michael and Bonnie Ryan
<b>Cover photos:</b>	Richard T. Clifton, Oklahoma All Sports Association.
<b>Additional Photos:</b>	Oklahoma All Sports Association, © Brett Wilhelm / NCAA Photos and courtesy of school media relations offices.
<b>Cover layouts/designs:</b>	Summit Athletic Media - Charlotte, N.C.
<b>Printing:</b>	MultiAd, Peoria, Illinois
<b>Special Thanks:</b>	The Big 12 would like to thank the school media relations offices for their valuable assistance in producing this publication.

### TABLE OF CONTENTS

#### Big 12 Information

Big 12 Media Services	2-3
Big 12 Conference Information	4-5
Big 12 & Special Olympics	6
Academic Programs	7-9
Athletes/Sportspersons of the Year & Sportsmanship Statement	10
National & Conference Championships	11-12
Big 12 Notebook	13-15
2009 Composite Schedule	16-23
Corporate Partners	24
Commissioner Dan Beebe	25
Conference Staff	26-28

#### Big 12 Teams

Baylor Bears	30-33
Quick Facts/Schedule	30
Alphabetical/Numerical Rosters	31
Coaching Information/2008 Results	32
2008 Statistics	33
Kansas Jayhawks	34-37
Kansas State Wildcats	38-41
Missouri Tigers	42-45
Nebraska Cornhuskers	46-49
Oklahoma Sooners	50-53
Oklahoma State Cowboys	54-57
Texas Longhorns	58-61
Texas A&M Aggies	62-65
Texas Tech Red Raiders	66-69

#### 2008 Season Review

Standings/Overall Statistics	70
Overall Statistics	71-72
Game Highs	73
Conference Only Statistics	74-76

#### Record Book & History

Game and Season Records	78-80
Career Records	81-82
Coaching Records	83
Year-By-Year Review	84-94
Phillips 66 Big 12 Championship	95-96
Annual Statistical Leaders	97-99
Attendance Leaders/National Polls	100-101
All-Big 12 Honors	102-105
Academic All-Big 12 Teams	106-108
Weekly Awards	109-110
National Awards	111
All-America Honors	112-113
NCAA Championship Records	114
Big 12 in the Major League Baseball Draft	115-119



**BIG 12 COMMUNICATIONS STAFF****Bob Burda, Assistant Commissioner - Communications**

Office Direct \_\_\_\_\_ 469/524-1007  
 Cell \_\_\_\_\_ 719/440-0216  
 E-mail \_\_\_\_\_ bob@big12sports.com

**Rob Carolla, Director of Communications**

Office Direct \_\_\_\_\_ 469/524-1011  
 Cell \_\_\_\_\_ 214/208-1876  
 E-mail \_\_\_\_\_ rcarolla@big12sports.com

**Joni Lehmann, Associate Director of Communications**

Office Direct \_\_\_\_\_ 469/524-1022  
 Cell \_\_\_\_\_ 214/263-7749  
 E-mail \_\_\_\_\_ joni@big12sports.com

**Carmen Branch, Assistant Director of Communications**

Office Direct \_\_\_\_\_ 469/524-1009  
 Cell \_\_\_\_\_ 214/418-6969  
 E-mail \_\_\_\_\_ carmen@big12sports.com

**Felicia Michael, Will Hancock Communications Assistant**

Office Direct \_\_\_\_\_ 469/524-1039  
 Cell \_\_\_\_\_ 806/252-0948  
 E-mail \_\_\_\_\_ fmichael@big12sports.com

**Bonnie Ryan, Will Hancock Communications Assistant**

Office Direct \_\_\_\_\_ 469/524-1040  
 Cell \_\_\_\_\_ 402/679-2912  
 E-mail \_\_\_\_\_ bryan@big12sports.com

**BOB BURDA****ROB CAROLLA****JONI LEHMANN****CARMEN BRANCH****FELICIA MICHAEL****BONNIE RYAN****THE INTERNET -- www.big12sports.com**

The Big 12 maintains its web site at www.big12sports.com. Complete information on the league and the member schools is available.

In Big 12 baseball, scores throughout the league and standings are updated on a daily basis. Conference statistics are available daily, with weekly award winners posted each Monday.

Media can access Acrobat PDF files of the conference release, statistics and the league media guide on the web site.

**CONFERENCE RELEASE**

The Big 12 will update a media release, including team notes, results and more daily during the season. Complete league statistics will be updated via the conference web site as well.

**PHILLIPS 66 WEEKLY AWARDS**

A Big 12 Player and Pitcher of the Week will be chosen beginning in late February. Nominations are submitted by the school media relations offices and the winners are selected by a panel of media voters who cover the league on a regular basis. This year marks the 13th year for Phillips 66 as a sponsor of the Big 12 Conference.

**COACHES' TELECONFERENCE**

The Big 12 Conference baseball coaches will participate in media-only teleconferences during the 2009 season. The calls begin with a preseason call in February, followed by bi-weekly teleconferences beginning in April. Each teleconference will start at 10 a.m. Central Time, and can also be heard live and on replay via the Big 12 web site at big12sports.com. Please contact the Big 12 communications staff for the call-in and replay phone numbers.

**Dates:** Feb. 18; April 13, 27; May 11

**Schedule:**

10:00 a.m. - Tim Jamieson, Missouri  
 10:10 a.m. - Dan Spencer, Texas Tech  
 10:20 a.m. - Mike Anderson, Nebraska  
 10:30 a.m. - Ritch Price, Kansas  
 10:40 a.m. - Steve Smith, Baylor  
 10:50 a.m. - Brad Hill, Kansas State  
 11:00 a.m. - Rob Childress, Texas A&M  
 11:10 a.m. - Sunny Golloway, Oklahoma  
 11:20 a.m. - Frank Anderson, Oklahoma State  
 11:30 a.m. - Augie Garrido, Texas

**POSTSEASON AWARDS**

The Big 12 presents the official all-conference awards at the end of the regular season. Major award winners are chosen, along with the All-Big 12 teams. Each head coach votes on the squads and is not permitted to vote for his own players. The awards will be announced prior to the Phillips 66 Big 12 Baseball Championship.

Academic All-Big 12 teams are also chosen in baseball and will be announced prior to the postseason. Further information on academic honors presented by the conference is available on page six.





### BIG 12 WEEKLY SHOWS

For the first time this season, the Big 12 boasts of two separate weekly magazine-style shows. Each program is a 30-minute promotion of the league, with features on student-athletes, coaches, teams and conference championships.



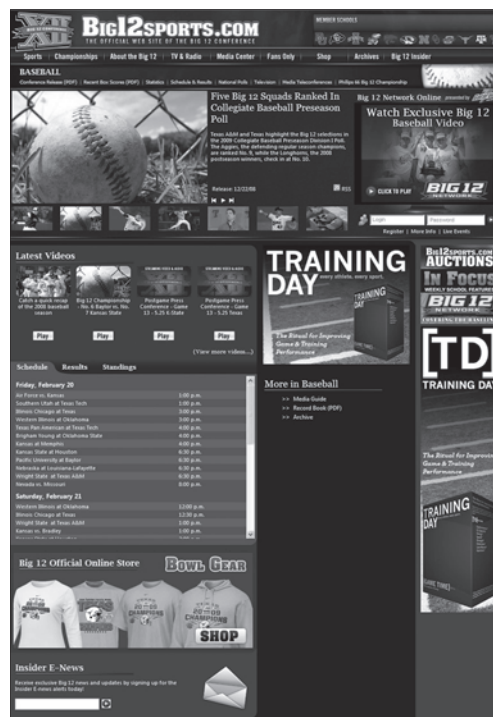
Big 12 Showcase returns for its 13th season on FSN and has been produced by Keith Fletcher each of those years. Emily Jones handles hosting duties. Big 12 This Week is televised weekly by ESPNU, with Melissa Knowles as the host. Segments of both programs are available online via the Big 12 web site.

### CHAMPIONSHIP CREDENTIALS

Media credentials for the 2009 Phillips 66 Big 12 Baseball Championship are authorized and issued by the Conference office. An online credential system, provided through an agreement with Sports Systems Services, Inc., is the only method to submit requests. The credential system will be made available during the month of April.

### TRADEMARKS

Big 12, Big 12 Conference and the Big 12 logo are registered trademarks and use of these trademarks without prior approval of the Big 12 is prohibited. All requests for use of the Big 12 logo - except standard and customary media uses - must be made through Collegiate Licensing Company (Nate Klein, 770-956-0520). For Big 12 marketing and sponsorship opportunities, please contact Director of Marketing Maark Keith (469-524-1024) or ESPN Regional's Ami Annett (469-524-1030).



Visit the  
Big 12 Web Site at  
[www.big12sports.com](http://www.big12sports.com)

### BIG 12 ... AS EASY AS 1 - 2

When referring to the Big 12 Conference, please remember the conference name should be written as follows:

Big 12  
Big 12 Conference

The following should NOT be used when referencing the Big 12:

Big XII  
Big Twelve

### BIG 12 BASEBALL MEDIA RELATIONS CONTACTS

	MEDIA CONTACT	OFFICE PHONE	CELL PHONE	E-MAIL
Big 12	Carmen Branch	469/524-1009	214/418-6969	carmen@big12sports.com
Baylor	Larry Little	254/710-4389	254/709-5147	Larry_Little@baylor.edu
Kansas	Mike Cummings	785/864-3575	785/331-6307	mtc@ku.edu
Kansas State	Ryan Lackey	785/532-7708	785/587-7865	rlackey@ksu.edu
Missouri	Josh Murray	573/882-0711	573/268-8606	murrayjos@missouri.edu
Nebraska	Shamus McKnight	402/472-7772	402/540-0268	smcknight@huskers.com
Oklahoma	Craig Moran	405/325-8231	405/249-8264	cmoran@ou.edu
Oklahoma State	Wade McWhorter	405/744-7853	405/612-5240	wade.mcwhorter@okstate.edu
Texas	Thomas Dick	512/471-6039	512/748-9314	thomas.dick@athletics.utexas.edu
Texas A&M	Matt Simon	979/845-3239	979/255-0469	matts@athletics.tamu.edu
Texas Tech	Blayne Beal	806/742-2770 (x270)	806/790-7924	blayne.beal@ttu.edu







www.big12sports.com

# BIG 12 CONFERENCE

## 2009 Big 12 Baseball Media Guide

BIG 12

TEAMS

2008 REVIEW

RECORD BOOK

HISTORY

### THE BIG 12 CONFERENCE – OUTSTANDING SUCCESS



The Big 12 Conference has established a consistent level of national success on the field and in the classroom in its 13th season in 2008-09.

Since it began play in 1996-97, the Conference can boast of 31 team crowns and over 385 individual NCAA Championships. The success continued through the fall of 2008 as the league placed two teams in the Bowl Championship Series for the fifth time and had a team play for the BCS National Championship for the sixth season. In addition, two volleyball teams advanced to the semifinals of the NCAA Championship. Sally Kipyego (Texas Tech) became the first NCAA Division I female or male runner to win three consecutive cross country national championships. For the fourth time in its 13-year history a Big 12 student-athlete won the Heisman Trophy. The Big 12 also established a high-water mark, as for the first time in the 74-year history of the Heisman Trophy four of the top five vote-getters hailed from the same conference, including award winner Sam Bradford (Oklahoma).

Over the past four seasons a total of 12 NCAA trophies have been hoisted by Big 12 institutions, with at least one national crown won in all but one year for the Conference, including each of the past 11 seasons. In 2007-08, Kansas captured the Big 12's first national title in men's basketball, while the league added 31 individual crowns.

The Big 12 leads all conferences with its six appearances in BCS title games. League squads have played for the football national championship six times in the last nine years with berths in 16 BCS games overall, including two in 2007 and 2008. The Big 12 led all conferences with five teams ranked in the final 2008 BCS Standings. In addition, an all-time high nine league players earned consensus All-America recognition this past season, more than any other conference.

In basketball, nine men's and women's teams have advanced to their respective Final Fours in the past seven seasons as the Big 12 continues its place among the elite intercollegiate athletic conferences. The six men's Final Four participants since 2002 are more than any conference. Numerous national honors have been won by basketball student-athletes during the league's history, with Michael Beasley (Kansas State), D.J. Augustin (Texas) and Courtney Paris (Oklahoma) the most recent to garner accolades as consensus All-America in 2007-08.

The Big 12 and its member institutions are committed to a competitive environment where sportsmanship and fair play take center stage. Whether on the field, in the classroom, or within the community the student-athletes, administrators, coaches and game officials of the Big 12 support the highest ideals in sportsmanship.

Big 12 student-athletes also do well in garnering national academic recognition. Sarah Pavan (Nebraska) was named Academic All-America of the Year in volleyball the past two seasons by ESPN The Magazine and College Sports Information Directors of America with a 4.0 grade-point average in Biochemistry. She also won the national academic honor presented for all sports in 2006-07 and was named recipient of the prestigious 2006-07 Honda-Broderick Award as Collegiate Woman Athlete of the Year. She is the first athlete since the Big 12 was formed to earn the accolade. In addition to his athletic accomplishments, Augustin was an Academic All-America First Team choice. In its history, the conference has over 300 academic honorees, averaging more than 25 each season.

The Big 12 can boast of other stories that combine on and off the field success. Patience Knight (Texas Tech) was the recipient of the Honda Inspiration Award in 2008, given to an outstanding female college athlete who overcomes adversity to excel in her sport. She was diagnosed with a cancerous tumor in 2007, but rebounded to win All-America honors at the 2008 NCAA Indoor Track & Field Championships.

Competitive excellence, scholarship and sportsmanship are all equal components of the Big 12 philosophy. All-Big 12 teams and Academic All-Big 12 squads are recognized for each sport at the end of their respective seasons.

At the end of each academic year, the Conference honors its top male and female student-athletes with the Big 12 Athlete of the Year and Big 12 Sportsman of the Year awards.

Institutions can also nominate student-athletes for the prestigious Dr. Prentice Gautt Postgraduate Scholarships at the end of each academic year. A total of 201 scholars have received over \$1.2 million in postgraduate financial aid through the first 12 years of the program.

The Big 12 sponsors 21 sports. Men's squads include baseball, basketball, cross country, football, golf, indoor track & field, outdoor track & field, swimming & diving, tennis and wrestling. Women's teams are fielded in basketball, cross country, golf, gymnastics, indoor track & field, outdoor track & field, soccer, softball, swimming, tennis and volleyball.

The conference is made up of 12 institutions that have shared many traditional rivalries throughout their histories. Member schools include - Baylor University, University of Colorado, Iowa State University, University of Kansas, Kansas State University, University of Missouri, University of Nebraska, University of Oklahoma, Oklahoma State University, University of Texas, Texas A&M University and Texas Tech University.

The institutions created a league that encompasses seven states, over 45 million people and television households in 18 of the top 100 markets within its geographic footprint.

The conference conducts championships for 20 of its 21 sports. Each championship helps to determine teams and/or individuals that will represent the Conference in national postseason competition. The winner of the Big 12 football championship game earns the league's berth into the prestigious Bowl Championship Series.

In the last several years the Big 12 has increased its bowl agreements and expanded television opportunities for all sports through contracts with ABC/ESPN and FSN. Most recently, the league renewed and expanded its multi-year arrangement with ABC/ESPN, Inc. The new contract began in 2008-09.

In its first 12 years, the Conference has distributed more than \$1 billion to its 12 member institutions.

The Big 12 staff administers to over 4,600 student-athletes in 21 sports. The conference office is headquartered in Irving, Texas.



Kansas celebrates its 2008 NCAA Championship.





### BIG 12 QUICK FACTS

(All statistics from 1996 through January 2009)

**Founded:** February 25, 1994

**Area:** Seven states with combined populations of more than 45 million people

**Television Markets:** 18 of the Top 100 nationally

**Commissioner's Honor Roll Students:**  
55,000-plus named in first 24 semesters

**Academic All-Big 12 First Team Members:**  
Approximately 10,120

**Student-Athletes with a 4.0 grade-point average on Academic All-Big 12 Teams:** 649

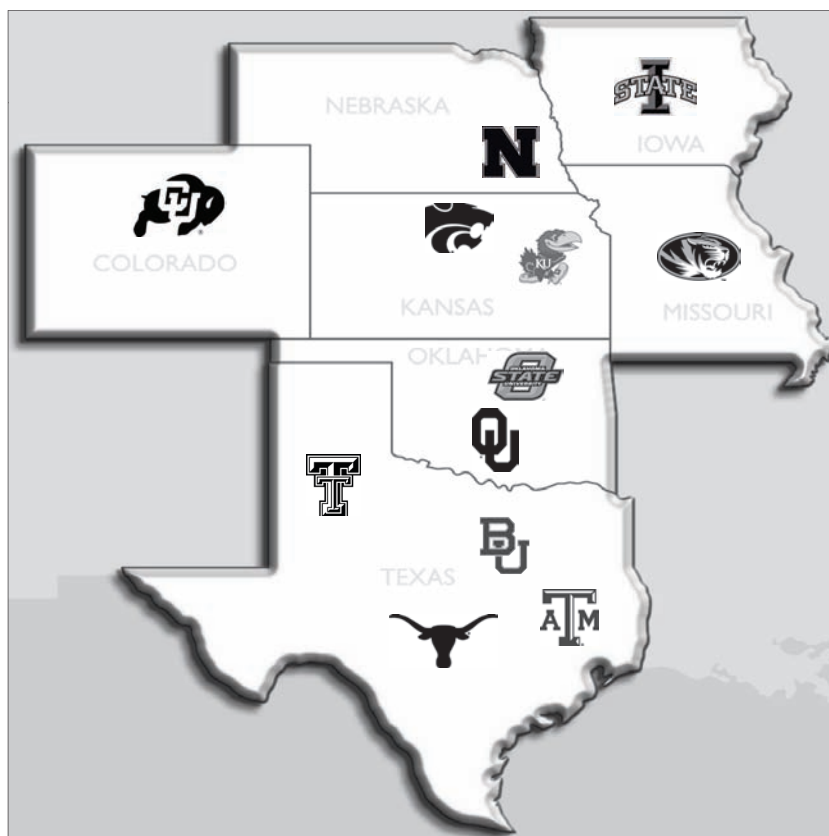
**Dr. Prentice Gautt Scholarships:**  
201 with over \$1,205,600 in financial aid

**Team National Championships:** 31

**Individual National Championships:** 387

**All-America First Team Selections:** 2,752

**Big 12 Postseason Championship Attendance:**  
More Than 4 million fans



### RICH FETCHIET

Coordinator of Baseball Umpires

Rich Fetchiet was named Big 12 Conference Coordinator of Baseball Umpires in August 2005. He has over 30 years of collegiate, national and international umpiring and umpire-related administrative experience.

Fetchiet is also currently the coordinator for Conference USA, the Big East, Big Ten and Mid-American conferences, and the Horizon League. He is a member of the NCAA National Umpire Program Advisory Committee in addition to the NCAA Baseball Rules Editorial Committee. Fetchiet has served as the Baseball Secretary-Rules Editor for the NCAA and Chair of the ABCA Rules Committee. He is active in numerous officiating organizations and is a teacher and instructor at umpire camps and clinics across the country.

Fetchiet retired from active umpiring after the 2000 season. Prior to that he umpired numerous Division I conference tournaments and made three College World Series appearances, including serving as the plate umpire for the 1999 national championship game. Included among Rich's international tournaments are the Pan Am Games, World Cup Qualifier, Intercontinental Cup, World Championships and the Olympic Games. In 1997 he was named Umpire of the Year by the International Baseball Association.

Fetchiet is a higher education administrator at the University of Michigan School of Dentistry. He and his wife, Kay, and two children currently reside in Ann Arbor, Mich.







www.big12sports.com

# SPECIAL OLYMPICS

## 2009 Big 12 Baseball Media Guide

BIG 12

TEAMS

2008 REVIEW

RECORD BOOK

HISTORY

The Big 12 recently announced plans to enhance its partnership with the Special Olympics organizations in each of the seven conference member states. The partnership currently includes:

- Sports clinics for Special Olympics athletes and coaches in conjunction with various Big 12 Championships
- Sport demonstrations during Big 12 events
- Public service announcements
- Inclusion in various Big 12 publications and an active interaction with institutions' Student-Athlete Advisory Committee (SAAC)

In the coming years, the conference will focus on providing additional activities, events and exposure opportunities. The league will focus on building a stronger relationship between Special Olympics and the SAAC with internship opportunities for Big 12 student-athletes at the various Special Olympics state offices.

Throughout the seven conference member states, more than 73,000 athletes participate in a total of 28 Special Olympics sports ranging from track and field to power lifting to team handball.

Special Olympics provide year-round sports training and competition for children and adults with intellectual disabilities. Through sports, Special Olympics' athletes have opportunities to develop physical fitness, demonstrate courage, learn new skills, gain self-confidence, set goals and reach expectations.

Get involved with Special Olympics by contacting your local office.

Colorado .....	800-777-5767 ...specialolympicsco.org
Iowa .....	877-267-0134 .....soiowa.org
Kansas.....	800-444-9803 .....kssso.org
Missouri.....	800-846-2682 .....somo.org
Nebraska .....	800-247-0105 .....sone.org
Oklahoma .....	918-481-1234 .....sook.org
Texas .....	800-876-5646 .....sotx.org



# Special Olympics





Performance in the classroom is just as important as accolades on the field when looking at the student-athlete. The Big 12 Conference recognizes student-athletes in four areas for academic achievement. Those areas include the Commissioner's Honor Roll, Academic All-Big 12 teams, the Phillips 66 Big 12 Classroom Champions, and the Big 12 Dr. Prentice Gautt Postgraduate Scholarship.

### ACADEMIC ALL-BIG 12 TEAMS

Recognizing those student-athletes who excel in the classroom and on the field and court, the Big 12 has academic all-conference teams for all sports.

Nominated by the Directors of Student-Athlete Support Services and the Athletic Media Relations Directors, members of the all-academic teams have posted at least a 3.00 grade point average either cumulative or the previous two semesters and are regulars (i.e. letterwinners) on his or her respective team. First-team honorees are regulars who have at least a 3.20 GPA.

Last year, a few academic teams in the Big 12 exceeded 100 student-athletes recognized by the conference. In addition, student-athletes have gained recognition by being named to ESPN The Magazine/CoSIDA Academic All-America teams.

### COMMISSIONER'S HONOR ROLL

Acknowledging all participants, the Big 12 Commissioner's Honor Roll is an inclusive honor for all sports sponsored by the membership of the league. The Honor Roll is recorded and released each semester and recognizes those student-athletes who registered a 3.0 or better grade point average the previous semester.

Submitted through the Directors of Student-Athlete Support Services at each institution, those honored are not necessarily the stars on the field and court but those who participate on the team. They include the letterwinners and non-letterwinners and recognize every student-athlete who has excelled in the classroom.

More than 2,000 Big 12 student-athletes are named to the Commissioner's Honor Rolls at the end of each of semester.

### PHILLIPS 66 CLASSROOM CHAMPIONS

As Phillips 66 Big 12 Classroom Champions, the conference recognizes 30 student-athletes per school who have excelled in competition and in the classroom. Chosen through the Big 12 membership, those honored are recognized throughout the year on the Big 12 Network in conjunction with ESPN Regional and FSN.

### DR. PRENTICE GAUTT SCHOLARSHIP PROGRAM

With 120 student-athletes from all Big 12 schools honored over the last five years, the Dr. Prentice Gautt Postgraduate Scholarships' list has grown to 201 recipients since the 1996-97 academic year.

Additional funding prior to the 2002-03 selection process allowed each school to name two outstanding scholars to the annual list of honorees. Conference officers also voted to name the postgraduate scholarship program awards after longtime Big 12 and Big Eight Conference Associate Commissioner and student services' pioneer Dr. Prentice Gautt in 2004. Dr. Gautt passed away on March 17, 2005.

The all-time group has solid representation of scholars throughout the 21 sponsored Big 12 sports and has provided \$1,205,600 through the 2007-08 academic year for much-needed financial aid. Three faculty representatives, one senior woman administrator and one director of athletics form the selection group for the prestigious awards, which help the students to continue their formal education. Since its inception the Dr. Prentice Gautt Postgraduate Scholarship program has produced over a dozen physicians, several attorneys for the underprivileged, college professors, Peace Corps volunteers and positions of national prominence.

Criteria for these awards include a cumulative grade point average of 3.500 on a 4.0 scale, participation in at least two years of intercollegiate athletics at the scholar-athlete's respective institution, and completion of athletics' eligibility. The scholar-athletes also must graduate from their respective member institutions within 15 months of their selection as postgraduate scholarship recipients and are expected to enroll in graduate/professional schools within 15 months after they graduate.

The \$2,500 individual annual grants began in 1996-97, were raised to \$5,000 in 1999 and increased to \$6,900 prior to the 2003-04 term. In 2006-07, the awards climbed to \$7,500. Most honorees in recent years have also been named to Academic All-Big 12 Conference teams as well as the Big 12 Commissioner's Honor Roll.

### CHICK-FIL-A COMMUNITY OF CHAMPIONS

The Big 12 Conference, in conjunction with Chick-fil-A, recognizes numerous student-athletes during the academic year with the Community of Champions program. In order to be eligible for consideration, student-athletes must meet the following criteria:

- **Academics** ~ An academic standard of a 3.0 grade-point average or higher must be maintained.
- **Community Service** ~ The designated student-athlete should be involved with at least one community service program. The program(s) could be a student organization on campus or within the athletic department. For example, the Student Athlete Advisory Committee or Big Brothers/Big Sisters.
- **Leadership/Sportsmanship** ~ The student-athlete should demonstrate leadership and sportsmanship on and off the field. Examples would include being team captain, maintaining a leadership role within the athletic department or leadership roles in a campus student organization(s).

#### Institutional Awards

In the separate, institutional part of the program, all athletic departments will receive \$3,000 from Chick-fil-A. One institution will receive an additional \$2,000 (\$5,000 total) for outstanding activities in its community. The Community of Champion rules state that the grand prize "will be awarded based on the winning institution's overall positive impact on its community." When multiple institutions are engaged in the similar community activities, the winning institution will be selected by Chick-fil-A with input provided by the Big 12 and ESPN Regional Television.





## DR. PRENTICE GAUTT POSTGRADUATE SCHOLARSHIP WINNERS

## 2007-08

Kristen Schramek	Baylor	Volleyball	Kim Shubert	Nebraska	Track & Field
Tim Jackson	Baylor	Baseball	Stephen Tetrault	Nebraska	Gymnastics
Lucie Zikova	Colorado	Skiing	Christina Baxley	Oklahoma	Tennis
Byron Ellis	Colorado	Football	Josh Weitzel	Oklahoma	Wrestling
Christine Derouin	Iowa State	Tennis	Brittany Myers	Oklahoma State	Equestrian
Bryce Braaksma	Iowa State	Football	Brian Ehlis	Oklahoma State	Track & Field
Kara Boston	Kansas	Rowing	Danielle Bartz	Texas	Rowing
Jeff Foster	Kansas	Football	Hubert Chodkiewicz	Texas	Tennis
Carolyn McCullough	Kansas State	Basketball	Jessica Wingfield	Texas A&M	Track & Field
Bradley Hutt	Kansas State	Baseball	Terry Dike	Texas A&M	Track & Field
Elizabeth Robe	Missouri	Track & Field	Sarah Losleben	Texas Tech	Softball
Tyler McCormick	Missouri	Wrestling	Dimitrio Martinez	Texas Tech	Tennis

## 2006-07

Chelsi Lake	Baylor	Softball
Irwin Price	Baylor	Cross Country
Kristin Taylor	Colorado	Skiing
Benjamin Carpenter	Colorado	Football
Nicole Lorenzen	Iowa State	Volleyball
Shawn Moorehead	Iowa State	Football
Lindsey Miles	Kansas	Rowing
Jonathan Lamb	Kansas	Football
Jessica Simosa	Kansas State	Tennis
Wally Walstrom	Kansas State	Track & Field
Jessica Vander Kooi	Missouri	Volleyball
Michael Unger	Missouri	Golf
Lauren Bailey	Nebraska	Swimming & Diving
Dane Todd	Nebraska	Football
Brittney Schumann	Oklahoma	Gymnastics
Carl Pendleton	Oklahoma	Football
Lauren Simmons	Oklahoma State	Tennis
Darnell Smith	Oklahoma State	Football
Petra Dizdar	Texas	Tennis
Poston Pritchett	Texas	Swimming & Diving
Chandler Rainey	Texas A&M	Cross Country/Track & Field
Thomas Sanders	Texas A&M	Football
Lindsey Walesheck	Texas Tech	Track & Field
T.J. McLarty	Texas Tech	Track & Field

## 2004-05

Stephen Sepulveda	Baylor	Football
Lori Viggiano	Baylor	Soccer
Andrew Miller	Colorado	Track & Field
Liza Negriff	Colorado	Track & Field
Daniel Zelik	Iowa State	Track & Field
Kelly Burke	Iowa State	Soccer
John Nielsen	Kansas	Football
Kimberlee Clark	Kansas	Track & Field
Erik Sproll	Kansas State	Track & Field
Stephanie Limoges	Kansas State	Golf
Jacob Thomas	Missouri	Swimming & Diving
Karen Bauer	Missouri	Soccer
Daniel Bruce	Nebraska	Baseball
Richelle Simpson	Nebraska	Gymnastics
Joshua Gore	Oklahoma	Gymnastics
Emily Milberger	Oklahoma	Golf
James Lake	Oklahoma State	Track & Field
Megan Carey	Oklahoma State	Softball
Trey Bates	Texas	Football
Jamie Carey	Texas	Basketball
Anthony Alfier	Texas A&M	Track & Field
Lauren Walker	Texas A&M	Tennis
Michael Innerebner	Texas Tech	Tennis
Daneen Grisham	Texas Tech	Volleyball

## 2005-06

Sarah Hausner	Baylor	Softball
Phil Tran	Baylor	Football
Maria Persson Gulda	Colorado	Golf
Michael Ernemann	Colorado	Skiing
Deb Benakis	Iowa State	Soccer
Seth Zehr	Iowa State	Football
Caroline Smith	Kansas	Soccer
Christian Moody	Kansas	Basketball
Joy Hamlin Vetter	Kansas State	Volleyball
Christian Smith	Kansas State	Track & Field
Jodie Heinicka	Missouri	Gymnastics
Neville Miller	Missouri	Cross Country
Jessica Yoachim	Nebraska	Softball
Bronsen Schliep	Nebraska	Basketball
Amparo Gala Marco	Oklahoma	Golf
Thomas Garrison	Oklahoma	Tennis
Lauren Colwell	Oklahoma State	Soccer
Zack Robinson	Oklahoma State	Golf
Catherine Osterman	Texas	Softball
Karim Meijer	Texas	Football
Laura Probst	Texas A&M	Soccer
Matthew LaFon	Texas A&M	Football
Erin Grant	Texas Tech	Basketball
Sage Thames	Texas Tech	Track & Field

## 2003-04

John Martin	Baylor	Football
Megan McCain	Baylor	Cross Country/Track & Field
Michael Read	Colorado	Skiing
Kim Taskey	Colorado	Volleyball
Bob Montgomery	Iowa State	Football
Elizabeth Chapman	Iowa State	Soccer
Zach Dyer	Kansas	Football
Elizabeth Olson	Kansas	Rowing
Craig Smith	Kansas State	Track & Field
Cari Jensen	Kansas State	Volleyball
Kenny Burleson	Missouri	Wrestling
Molly Christensen	Missouri	Swimming
Judd Davies	Nebraska	Football
Anna Schrad	Nebraska	Volleyball
Renaldo Works	Oklahoma	Football
Caton Hill	Oklahoma	Women's Basketball
Jason Woolhouse	Oklahoma State	Cross Country/Track & Field
Jade Lindly	Oklahoma State	Softball
Brett Robin	Texas	Football
Katharine Scarlett	Texas	Cross Country/Track & Field
Jonathan Peschel	Texas A&M	Track & Field
Rebecca Wynalda	Texas A&M	Volleyball
Taylor Jobe	Texas Tech	Football
Tracie Akerheim	Texas Tech	Cross Country/Track & Field





### DR. PRENTICE GAUTT POSTGRADUATE SCHOLARSHIP WINNERS

#### 2002-03

Ross Bennett	Baylor	Baseball
Whitney Barrett	Baylor	Soccer
Stephen Carroll	Colorado	Golf
Dominique Lemperle	Colorado	Tennis
Tara Goedjen	Iowa State	Tennis
Cody Stafford	Iowa State	Football
Case Collard	Kansas	Football
Gwen Haley	Kansas	Swimming
Tim Doty	Kansas State	Baseball
Amy Mortimer	Kansas State	Track & Field
Radu Miclaus	Missouri	Swimming & Diving
Tiffany Bohon	Missouri	Swimming & Diving
Laura Pilakowski	Nebraska	Volleyball/ Women's Basketball
Ryan Sneed	Nebraska	Gymnastics
Chris Mitchell	Oklahoma	Tennis
Stephanie Simon	Oklahoma	Women's Basketball
Kyle Eaton	Oklahoma State	Football
Linda Faltynkova	Oklahoma State	Tennis
Erin Sims	Texas	Track & Field
Sean Foley	Texas	Swimming & Diving
Ben Hooker	Texas A&M	Track & Field
Jamie Mishler	Texas A&M	Equestrian
Stacey Poole	Texas Tech	Volleyball
John Walker	Texas Tech	Tennis

#### 2001-02

Tim Hartshorn	Baylor	Baseball
Lanie Millar	Baylor	Cross Country/Track & Field
Aaron Blondeau	Colorado	Cross Country
Erin Endres	Iowa State	Swimming & Diving
Catherine Voorhees	Iowa State	Swimming & Diving
Ann Marie Brooks	Missouri	Cross Country/Track & Field
Rachel Spiry	Nebraska	Rifle
Betsy Berry	Oklahoma	Golf
Fran Krepelka	Oklahoma State	Tennis
Vladka Uhlírova	Texas	Tennis
Jesse Even	Texas A&M	Swimming & Diving
Beth Weynand	Texas A&M	Volleyball
Royce Ramey	Texas Tech	Tennis

#### 2000-01

Kerry O'Bric	Baylor	Track & Field
Mark Williams	Baylor	Tennis
Nicole Cavarra	Colorado	Golf
Gina Curtis	Iowa State	Track & Field
Paul Shirley	Iowa State	Basketball
Brice Libel	Kansas State	Football
Sunny Gilbert	Missouri	Cross Country/Track & Field
Ashley Wysong	Missouri	Track & Field
Amie Finker-Jorgensen	Nebraska	Cross Country/Track & Field
Stephanie Webb	Oklahoma	Cross Country/Track & Field
Sara Wells	Oklahoma State	Track & Field
Kris Stockton	Texas	Football
Alfred Mansour	Texas A&M	Swimming

#### 1999-00

Kelly Campbell	Colorado	Volleyball
Cody Sanderson	Iowa State	Wrestling
Isabelle Morneau	Nebraska	Soccer
Brian Shaw	Nebraska	Football
Virginia Russell	Oklahoma	Gymnastics
Jennifer Crow	Oklahoma State	Basketball
Keely Franks	Texas	Softball
Kera Alexander	Texas A&M	Women's Basketball
Keith Cockrum	Texas Tech	Football
Jamie Vannoy	Texas Tech	Golf
Paula Workman	Texas Tech	Softball

#### 1998-99

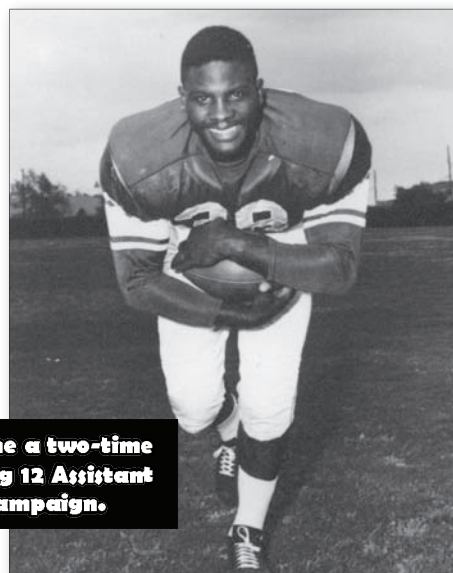
Heather Burroughs	Colorado	Cross Country
Xan Courville	Colorado	Skiing
Emily Diederich	Kansas State	Track & Field
Nikki Webber	Missouri	Track & Field
Kate Benson	Nebraska	Basketball
Kourtney Bower	Oklahoma State	Basketball
Mark Naftanel	Texas A&M	Diving
Bobbi Crill	Texas Tech	Track & Field

#### 1997-98

Douglas Maziur	Baylor	Track & Field
Kelly Smith	Colorado	Track & Field
Jayne Olsen	Iowa State	Basketball
Maria Abatjoglou	Kansas	Tennis
Xavier Avila	Kansas	Tennis
Lisa Beran	Kansas	Track & Field
Josh Dimmick	Kansas	Baseball
Elena Pilipchak	Kansas State	Tennis
Roxanne Long	Oklahoma	Women's Basketball

#### 1996-97

Kim Mazza	Iowa State	Gymnastics
Jerod Haase	Kansas	Basketball
Angie Halbleib	Kansas	Basketball
Shelly Bartlett	Nebraska	Gymnastics
Ted Harris	Nebraska	Gymnastics
Jenny Bramer	Oklahoma	Basketball/Track & Field
Mark Branch	Oklahoma State	Wrestling
Chris Eckerman	Texas	Swimming & Diving
Jennifer Guillory	Texas A&M	Swimming & Diving
Jimmy Frush	Texas Tech	Baseball



**Prentice Gautt was the first black football player at Oklahoma. He became a two-time All-Big Eight selection and was the 1959 Orange Bowl MVP. The former Big 12 Assistant Commissioner was also named to the Academic All-America Team his senior campaign.**





The Big 12 annually recognizes its top male and female athlete and sportsperson. The Athlete of the Year Awards are selected based on athletic performance, academic achievement and citizenship within the academic year of nomination. The Sportspersons of the Year Award was started prior to the 2000-01 academic year to recognize student-athletes who displayed an extraordinary degree of sportsmanship and/or community service from within the conference. Honorees are selected by a media panel.

In 2007-08, the Big 12 Athletes of the Year were Chase Daniel (Missouri) and Sarah Pavan (Nebraska). The Sportsperson of the Year winners were Mamadou Diene (Baylor) and Katie Martincich (Kansas).

Daniel finished fourth in the Heisman Trophy balloting in 2007 while leading Missouri to a share of its first Big 12 North division title and first appearance in the Dr Pepper Big 12 Football Championship Game. The junior quarterback was a finalist for the O'Brien, Walter Camp and Manning awards. He also excelled in the classroom, earning Academic All-Big 12 First Team honors.

Pavan, honored for the second consecutive year, is the most decorated volleyball student-athlete in Big 12 history. For the 2007 season she was named Volleyball Magazine National Player of the Year, AVCA All-America First Team and Big 12 Player of the Year. She graduated with a 4.00 grade point average in biochemistry and was selected a 2008 NCAA Today's Top VIII Recipient.

Since his arrival from the Senegal, Diene has been active in the Baylor community participating in service projects such as the Waco Independent School District's Raise Your Game, South Bosque Elementary School and the Hillcrest Professional School Health Fair. He is a member of BU's Student-Athlete Advisory Council, has been selected as the 2008 Wilma Rudolph Award winner and participated in the 2006 NCAA Leadership Conference. To help minimize his expenses, the 7-0 center does not own a car or cell phone so that he can send money back to the Senegal to help support his family.

Martincich has been involved in KU student-athletes' community outreach projects, including Habitat for Humanity, the Susan G. Komen Foundation and National Girls & Women in Sports Field Day celebration. She also assisted with providing and wrapping gifts for underprivileged children at Christmas. After learning of the Big 12's initiative to grow its relationship with Special Olympics, Martincich organized a meeting with fellow student-athletes and Chris Hahn, the CEO of Special Olympics Kansas. This resulted in the inaugural Jayhawk SAAC sponsored Special Olympics Bowling Challenge, held in May.

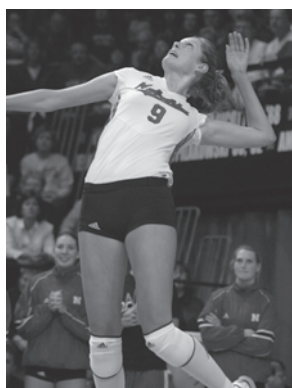
## BIG 12 ATHLETES &amp; SPORTSPERSONS OF THE YEAR

Athletes of the Year

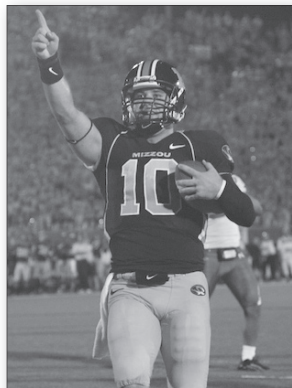
2007-08	Chase Daniel, Missouri Football (Male)
	Sarah Pavan, Nebraska Volleyball (Female)
2006-07	Ben Askren, Missouri Wrestling (Male)
	Sarah Pavan, Nebraska Volleyball (Female)
2005-06	Cat Osterman, Texas Softball (Female)
	Vince Young, Texas Football (Male)
2004-05	Cat Osterman, Texas Softball (Female)
	Derrick Johnson, Texas Football (Male)
2003-04	Nicole Ohlde, Kansas State Basketball (Female)
	Jason White, Oklahoma Football (Male)
2002-03	Cat Osterman, Texas Softball (Female)
	Nick Collison, Kansas Basketball (Male)
2001-02	Stacey Dales, Oklahoma Basketball (Female)
	Cael Sanderson, Iowa State Wrestling (Male)
2000-01	Greichaly Cepero, Nebraska Volleyball/Basketball (Female)
	Josh Heupel, Oklahoma Football (Male)
1999-00	Erin Aldrich, Texas Volleyball/Track & Field (Female)
	Charles Howell, Oklahoma State Golf (Male)
1998-99	Suziann Reid, Texas Track (Female)
	Ricky Williams, Texas Football (Male)
1997-98	Vera Ilyina, Texas Diving (Female)
	Grant Wistrom, Nebraska Football (Male)
1996-97	Nanceen Perry, Texas Track (Female)
	Jacque Vaughn, Kansas Basketball (Male)

Sportspersons of the Year

Mamadou Diene, Baylor Basketball (Male)
Katie Martincich, Kansas Volleyball (Female)
Carl Pendleton, Oklahoma Football (Male)
Amanda Costner, Kansas Golf (Female)
Jodie Heinicka, Missouri Gymnastics (Female)
Parker Dalton, Texas A&M Baseball (Male)
Richelle Simpson, Nebraska Gymnastics (Female)
Ahmad Hall, Texas Football (Male)
Jessika Stratton, Baylor Basketball (Female)
Mark Clayton, Lynn McGruder, Oklahoma Football (Male)
Laura Pilakowski, Nebraska Volleyball (Female)
Jeff Leise, Nebraska Baseball (Male)
Natalie Ritchie, Texas Tech Basketball (Female)
Cael Sanderson, Iowa State Wrestling (Male)
Kim Woodlee, Kansas State Basketball (Female)
Dan Alexander, Nebraska Football (Male)



**Sarah Pavan**  
University of Nebraska



**Chase Daniel**  
University of Missouri



**Katie Martincich**  
University of Kansas



**Mamadou Diene**  
Baylor University

## BIG 12 CONFERENCE SPORTSMANSHIP STATEMENT

The member institutions of the Big 12 Conference are committed to competition in an arena where sportsmanship and the sense of fair play take center stage. Whether on the field, within the community or in the classroom, those who make up the Big 12—its administrators, coaches, game officials and student-athletes—support the highest ideals in sportsmanship.

At the heart of sportsmanship is the commitment of the institutions towards respect for the opposition and those officiating contests in the 21 sports sponsored by the Big 12. It is with a sense of fair play that a true sporting demeanor in the spirit of intercollegiate competition can be created and maintained with a total regard for the welfare of student-athletes, coaches, support personnel and spectators.

Sportsmanship on the field of play is governed by Conference rules and guidelines, as well as those established under the NCAA and amateur organizations. It is the responsibility of game officials and administrators to see to strict adherence to these guidelines.

The behavior of spectators is managed by event personnel, who are encouraged to deal with interference or abuse of appropriate sporting behavior in the strictest of methods.

The Big 12 Conference and its member institutions appreciate the support of the majority of fans who wish to create an atmosphere of competition that allows the participants to showcase the game and their respective skills.





### BIG 12 TEAM NATIONAL CHAMPIONS (31)

#### Baseball (2)

2005 Texas  
2002 Texas

#### Men's Basketball (1)

2008 Kansas

#### Women's Basketball (1)

2005 Baylor

#### Men's Cross Country (3)

2006 Colorado  
2004 Colorado  
2001 Colorado

#### Women's Cross Country (2)

2004 Colorado  
2000 Colorado

#### Football (3)

2005 Texas  
2000 Oklahoma  
1997 Nebraska

#### Men's Golf (2)

2006 Oklahoma State  
2000 Oklahoma State

#### Women's Indoor Track & Field (3)

2006 Texas  
1999 Texas  
1998 Texas

#### Women's Outdoor Track & Field (3)

2005 Texas  
1999 Texas  
1998 Texas

#### Softball (1)

2000 Oklahoma

#### Men's Swimming (3)

2002 Texas  
2001 Texas  
2000 Texas

#### Men's Tennis (1)

2004 Baylor

#### Women's Volleyball (2)

2006 Nebraska  
2000 Nebraska

#### Wrestling (4)

2006 Oklahoma State  
2005 Oklahoma State  
2004 Oklahoma State  
2003 Oklahoma State

### BIG 12 INDIVIDUAL NATIONAL CHAMPIONS (2008-09 and 2007-08 Only)

#### 2008-09

**Women's Cross Country**  
Sally Kipyego, Texas Tech

#### 2007-08

**Women's Cross Country**  
Sally Kipyego, Texas Tech

#### Wrestling

Coleman Scott, Oklahoma State -  
133 pounds

#### Men's Indoor Track & Field

Leonel Manzano, Texas - Mile Run  
Egor Agafonov, Kansas - Weight Throw  
Baylor 4x400-meter relay  
[Trey Harts, Marcus Boyd, Justin Boyd,  
LeJerald Betters]  
Dusty Jonas, Nebraska - High Jump  
Texas Distance Medley Relay  
[Jacob Hernandez, Danzell Fortson,  
Tevan Everett, Leonel Manzano]

#### Women's Indoor Track & Field

Sally Kipyego, Texas Tech - 5,000 meter run  
Bianca Knight, Texas - 200 meter dash

#### Men's Swimming & Diving

Dave Walters, Texas - 200 freestyle

#### Men's Outdoor Track & Field

Baylor 4x400-meter relay  
[Marcus Boyd, Justin Boyd,  
LeJerald Betters, Quetin-Iglehart-Summers]  
Jacob Hernandez, Texas - 800 meter dash  
Leonel Manzano, Texas - 1500 meter run  
Maston Wallace, Texas - Pole Vault

#### Women's Outdoor Track & Field

Jenny Barringer, Colorado - 3,000  
Steeplechase  
Sally Kipyego, Texas Tech - 5,000 meter run  
Lisa Koll, Iowa State - 10,000 meter run  
Simone Facey, Texas A&M - 200 meter dash  
Texas A&M 4x100-meter relay  
[Elizabeth Adeoti, Porscha Lucas,  
Simone Facey, Allison George]

### ALL-TIME TEAM NCAA CHAMPIONSHIPS BY BIG 12 INSTITUTIONS (All Sports Played)

Oklahoma State	48
Texas	45
Oklahoma	24
Colorado	23
Nebraska	20
Iowa State	13
Kansas	10
Texas A&M	4
Baylor	2
Missouri	2
Texas Tech	1
<b>Total</b>	<b>192</b>



**Texas Tech's Sally Kipyego has won eight career NCAA titles in cross country, indoor track and outdoor track, most recently the 2008 national cross country crown.**

Only championships won as members of the Big 12 (since 1996-97) in conference-sponsored sports are included.







www.big12sports.com

# BIG 12 CHAMPIONSHIPS

2009 Big 12 Baseball Media Guide

BIG 12

TEAMS

2008 REVIEW

RECORD BOOK

HISTORY

## 2008-09 POSTSEASON SCHEDULE

Date	Sport	Venue	Location
November 1	Cross Country	ISU Cross Country Course	Ames, Iowa
November 5, 7, 9	Soccer	Blossom Soccer Stadium	San Antonio, Texas
December 6	Football	Arrowhead Stadium	Kansas City, Mo.
February 25-28	Swimming & Diving	Mizzou Aquatics Center	Columbia, Mo.
February 27-28	Indoor Track & Field	McFerrin Athletic Center	College Station, Texas
March 7	Wrestling	NU Coliseum	Lincoln, Neb.
March 11-14	Men's Basketball	Ford Center	Oklahoma City, Okla.
March 12-15	Women's Basketball	Cox Convention Center	Oklahoma City, Okla.
March 21	Gymnastics	Hilton Coliseum	Ames, Iowa
April 23-26	Tennis	Headington Family Tennis Center	Norman, Okla.
April 24-26	Women's Golf	Rawls Course	Lubbock, Texas
April 27-29	Men's Golf	Prairie Dunes	Hutchinson, Kan.
May 8-10	Softball	ASA Hall of Fame Stadium	Oklahoma City, Okla.
May 15-17	Outdoor Track & Field	R.P. Fuller Track	Lubbock, Texas
May 20-24	Baseball	AT&T Bricktown Ballpark	Oklahoma City, Okla.

For additional event and ticket information, visit the Big 12 web site at [www.big12sports.com](http://www.big12sports.com)

## ALL-TIME CHAMPIONSHIPS



### REGULAR SEASON

Baseball	2	0	0	0	0	0	3	0	0	4	3	1
Men's Basketball	0	0	2	8	0	0	0	1	1	3	0	0
Women's Basketball	1	0	1	1	2	0	0	5	0	2	1	3
Football	0	4	1	1	3	2	4	7	0	6	2	1
Men's Tennis	8	0	0	0	0	0	0	0	0	5	1	0
Women's Tennis	5	0	0	0	0	0	0	0	1	8	1	0
Soccer	1	1	0	1	0	0	3	0	1	1	6	0
Softball	1	0	0	0	0	1	3	2	0	3	2	0
Volleyball	0	0	0	0	1	0	11	0	0	3	0	0
<b>TOTALS</b>	<b>18</b>	<b>5</b>	<b>4</b>	<b>11</b>	<b>6</b>	<b>3</b>	<b>24</b>	<b>15</b>	<b>3</b>	<b>35</b>	<b>16</b>	<b>5</b>

Co-Championships and division titles are included above.



### POSTSEASON

Baseball	0	0	0	1	0	0	4	1	1	3	1	1
Men's Basketball	0	0	1	6	0	0	0	3	2	0	0	0
Women's Basketball	1	1	2	0	0	0	0	4	0	1	1	2
Men's Cross Country	0	12	0	0	0	0	0	0	1	0	0	0
Women's Cross Country	0	11	0	0	1	0	0	0	0	0	0	1
Football	0	1	0	0	1	0	2	6	0	2	1	0
Men's Golf	1	0	0	1	0	0	0	1	6	3	0	0
Women's Golf	0	0	0	0	0	0	0	1	6	2	3	0
Gymnastics	0	0	2	0	0	0	8	2	0	0	0	0
Soccer	0	0	0	0	0	1	5	0	1	2	4	0
Softball**	0	0	0	1	0	1	3	3	0	4	1	0
Men's Swimming & Diving	0	0	0	0	0	0	0	0	0	12	0	0
Women's Swimming & Diving	0	0	0	0	0	0	2	0	0	8	2	0
Men's Tennis	6	0	0	0	0	0	0	0	0	3	3	0
Women's Tennis	3	0	0	0	0	0	0	0	1	7	1	0
Men's Indoor Track & Field	0	0	0	0	0	0	9	0	0	4	0	0
Women's Indoor Track & Field	0	0	0	0	0	0	5	0	0	5	2	0
Men's Outdoor Track & Field	0	1	0	0	0	0	4	1	0	4	1	1
Women's Outdoor Track & Field	0	0	0	0	2	0	2	0	0	6	2	0
Wrestling	0	0	2	0	0	0	0	2	8	0	0	0
<b>TOTALS</b>	<b>11</b>	<b>26</b>	<b>7</b>	<b>9</b>	<b>4</b>	<b>2</b>	<b>44</b>	<b>23</b>	<b>26</b>	<b>66</b>	<b>22</b>	<b>5</b>

### OVERALL

29	31	11	20	10	5	68	38	29	101	38	10
----	----	----	----	----	---	----	----	----	-----	----	----

\*\* - Oklahoma won the 1996 Big 12 softball postseason title prior to the first academic year of Big 12 competition (1996-97)

Volleyball does not sponsor a postseason championship.

Big 12 titles for sports without round-robin conference play are determined by the postseason championship (Cross country, golf, gymnastics, swimming & diving, indoor/outdoor track & field, wrestling).





### ALL-BIG 12 SELECTIONS, STATISTICAL LEADERS RETURN IN 2009

Ten All-Big 12 picks are back this season -- six first-team honorees and four from the second team. Sophomore RHP Chance Ruffin (Texas), the 2008 Big 12 Freshman of the Year, also returns and was a second-team selection last season. The Austin, Texas, native posted a league-best 2.06 earned run average overall, which ranked 11th nationally, and compiled a 1.96 ERA in conference action during his freshman campaign. Ruffin also was the opponent batting average leader, holding opposing teams to .191 in all games and .186 in league contests. He earned Baseball America All-America third team honors for his efforts in '08.

In addition to Ruffin, the following all-conference team members will compete this season (years listed are for 2009):

#### First Team

Aaron Senne, Missouri, OF, Jr.  
Neil Medchill, Oklahoma State, OF, Jr.  
Andrew Oliver, Oklahoma State, SP, Jr.  
Luke Anders, Texas A&M, 1B, Sr.  
Kyle Colligan, Texas A&M, OF, Sr.  
Travis Starling, Texas A&M, RP, Jr.

#### Second Team

Trevor Coleman, Missouri, C, Jr.  
Tom Belza, Oklahoma State, 2B, So.  
Tyler Lyons, Oklahoma State, SP, Jr.  
Chance Ruffin, Texas, SP, So.

Kyle Thebeau (Texas A&M) and Oliver will also return to the mound in '09 after finishing No. 2 and 3, respectively, in the individual pitching category behind Ruffin in 2008.

Offensively, Belza paced the Big 12 with a .386 batting average in 50 games a year ago. Four of last season's top 10 hitters return, including Belza, Texas Tech's Willie Rueda (6th) and UT's Russell Moldenhauer (9th) and Michael Torres (10th). In conference play, Senne, Moldenhauer, Jamie Johnson (Oklahoma) and Medchill occupied the second through fifth spots in individual batting average.

Other returning all-conference selections who led in statistical categories in 2008 include: Anders (on-base percentage: .486, slugging percentage: .660), Colligan (runs scored - conference: 32), Lyons (innings pitched: 108.2 - overall, 69.1 - conference; complete games: 4 - conference), and Senne (on-base percentage: .500 - conference).

### A NEW FACE ON BASE

The Big 12 welcomes a new coach for the first time in three years, Texas Tech's Dan Spencer. He succeeds Larry Hays who spent the last 22 seasons as the head coach of the Red Raiders and ranks fourth in NCAA career victories (1,508). Spencer, who earned three varsity letters at TTU (1985-87), becomes just the eighth head coach in school history.



Dan Spencer

The Red Raider skipper rejoined the Texas Tech baseball family in July 2007 when he was named associate head coach. Spencer spent the 2008 season in that role where he coached the pitchers and catchers and headed Tech's recruiting efforts. His 2008 pitching staff produced two top 10 round MLB draft picks in juniors Zach Stewart and James Leverton -- both of which had never been drafted.

Prior to his return to Lubbock, Spencer spent 11 seasons at Oregon State and the last three as associate head coach where he served as pitching/catching coach and recruiting coordinator. The Beavers won consecutive national titles during Spencer's last two years in Corvallis (2006 and '07).

### BIG 12 HAS THE WINNINGEST ACTIVE COACH

Augie Garrido (Texas) is the all-time winningest active Division I coach (by victories) with 1,668 career wins in 40 years. He claimed his 1,428th victory on June 9, 2003 against No. 1 Florida State to move into first place. Garrido is also the first coach to record 1,500 wins, and one of only six coaches to surpass 1,400 victories in the history of Division I baseball.

In addition, Garrido (14th) is joined by Kansas State's Brad Hill (6th) Nebraska's Mike Anderson (12th), Oklahoma's Sunny Golloway (25th), Oklahoma State's Frank Anderson (28th) and Baylor's Steve Smith (48th) in the Top 50 active coaches by winning percentage.

### BIG 12 PLAYERS EARN PRESEASON ACCOLADES

Nineteen student-athletes from the Big 12 Conference were named to the 2009 Preseason Brooks Wallace Award Watch List, the College Baseball Foundation announced.

The award, which is dedicated to the memory of late Texas Tech shortstop and assistant coach Brooks Wallace, is given annually to the nation's top collegiate baseball player.

Former Nebraska third baseman Alex Gordon is the only Big 12 player to win the accolade (2005) since the inaugural award was presented in 2004.

### 2009 Preseason Brooks Wallace Award Watch List

Aaron Miller, Baylor  
Kendal Volz, Baylor  
Paul Smyth, Kansas  
Kyle Gibson, Missouri  
Aaron Senne, Missouri  
Aaron Baker, Oklahoma  
Andrew Doyle, Oklahoma  
Tyler Lyons, Oklahoma State  
Neil Medchill, Oklahoma State  
Andrew Oliver, Oklahoma State  
Brandon Belt, Texas  
Chance Ruffin, Texas  
Cameron Rupp, Texas  
Brandon Workman, Texas  
Luke Anders, Texas A&M  
Kyle Colligan, Texas A&M  
Travis Starling, Texas A&M  
Kyle Thebeau, Texas A&M  
Willie Rueda, Texas Tech

### AGGIES HEADLINE NATIONAL PRESEASON RANKINGS

Defending regular season champion Texas A&M highlights the Big 12 selections in three preseason polls released at press time. The Aggies top the Baseball America Top 25, are ranked fourth in the NCBWA poll and ninth in the Collegiate Baseball Fabulous 40 preseason picks. Texas joins A&M in the top 10, tabbed fourth by Baseball America, eighth by the NCBWA and 10th by Collegiate Baseball. Baylor (8/15/19) and Missouri (10/20/22) were recognized by all three entities as well. Oklahoma checked in at No. 16 in the BA rankings and No. 28 in the NCBWA poll, while instate rival Oklahoma State was rated by Collegiate Baseball and the NCBWA (14/16).

Individually, LHP Tyler Lyons (Oklahoma State) was named to the NCBWA Pro-Line Athletics Preseason All-America First Team, while OF Aaron Senne (Missouri) and RHP Chance Ruffin (Texas) earned third-team honors.

Four from the Conference were tabbed for the Louisville Slugger Preseason All-America baseball teams, selected by Collegiate Baseball. Missouri's RHP Kyle Gibson and Oklahoma State's LHP Andrew Oliver made the second team, and Lyons and Ruffin landed spots on the third team.



**BIG 12 VERSUS NON-CONFERENCE OPPONENTS**

Eight of the 10 Big 12 squads recorded a .500 winning percentage or higher during the 2008 season. The league compiled a 212-85 (.714) non-conference record, including 15 victories over ranked opponents (No. 1 UCLA, No. 3 Arizona State, No. 5 Wichita State - four, No. 6 Arizona - two, No. 11 UC Irvine, No. 15 Rice, No. 19 Houston, No. 18 TCU, No. 22 San Diego State, No. 22 Vanderbilt - two).

Overall, the conference has compiled a 2,565-1,115-7 mark and .697 winning percentage outside of league play. In '05, the squads produced the most non-conference victories (256) and highest winning percentage (.758) in Big 12 history.

**Non-Conference Results**

Year	Record	Pct.
1997:	196-83-0	.703
1998:	190-93-2	.673
1999:	214-95-0	.693
2000:	194-105-0	.649
2001:	201-107-2	.654
2002:	214-89-0	.706
2003:	211-98-0	.683
2004:	229-98-2	.701
2005:	256-82-1	.758
2006:	225-91-0	.713
2007:	223-89-0	.715
2008:	212-85-0	.714
<b>TOTAL:</b>	<b>2,565-1,115-7</b>	<b>.697</b>

**SEVEN BIG 12 SQUADS RANK AMONG NATIONAL ATTENDANCE LEADERS**

Texas and Texas A&M headlined the Big 12's seven teams listed in the top 50 of the NCAA attendance rankings. UT and TAMU are ranked fourth and fifth, respectively, in total home attendance. The Longhorns also pace the league in average home attendance at No. 4 in addition to Nebraska holding the No. 10 spot. The Big 12 has had four or more teams place in the national top 20 every season since 1999.

UT recorded 179,282 fans during the '08 campaign, averaging 5,976 spectators. The Aggies had 176,723 enter the turnstiles last season while drawing an average of 4,208 for their 42 home games.

Baylor, Texas and Texas A&M are three of eight schools who have averaged at least 2,700 fans each season since 2000.

**NCAA DIVISION I TOTAL HOME ATTENDANCE**

Rank	Team	Dates	Attendance	Average
4.	Texas	30	179,282	5,976
5.	Texas A&M	42	176,723	4,208
12.	Nebraska	31	136,120	4,391
21.	Baylor	30	92,152	3,072
30.	Texas Tech	25	56,556	2,262
32.	Oklahoma State	31	50,400	1,626
50.	Missouri	26	30,348	1,167

**NCAA DIVISION I AVERAGE HOME ATTENDANCE**

Rank	Team	Dates	Attendance	Average
4.	Texas	30	179,282	5,976
10.	Nebraska	31	136,120	4,391
11.	Texas A&M	42	176,723	4,208
18.	Baylor	30	92,152	3,072
24.	Texas Tech	25	56,556	2,262
36.	Oklahoma State	31	50,400	1,626
48.	Missouri	26	30,348	1,167

**THE BIG 12 IN NCAA CHAMPIONSHIP PLAY**

For the fourth time in conference history in 2008, six league teams -- Missouri, Nebraska, Oklahoma, Oklahoma State, Texas, and Texas A&M -- were selected to the NCAA Championship field. The Big 12 tied the Atlantic Coast Conference for the second-most selections by any league.

The Aggies, the Big 12 regular season champions, advanced to Super Regional action for the second straight season and the fifth time overall. It also marked the first time that the Aggies won consecutive NCAA Regional titles. At least one Big 12 squad has participated in a Super Regional in each of the last 10 years.

Five different Big 12 teams have earned College World Series bids in 12 seasons, including Texas' 2002 and '05 national title runs. Baylor (2005), Nebraska (2001-'02, '05), Oklahoma State (1999), Texas (2000, '02-'05) and Texas A&M (1999) have represented the league a total of 11 times at the event. The Big 12 had an all-time high three teams in the '05 CWS field, while sending two squads in 1999 and 2002.

**Big 12 NCAA Championship Selections**

Year	Selections
1997	4
1998	5
1999	6
2000	5
2001	5
2002	5
2003	5
2004	6
2005	5
2006	7
2007	6
2008	6
<b>TOTAL</b>	<b>65</b>

**BAYLOR'S VOLZ LEADS USA BASEBALL NATIONAL TEAM TO FISU TITLE**

Kendal Volz caught the game-ending groundout with the potential tying run at third base to help the USA Baseball National Team defeat Japan, 1-0, on July 27 in the gold medal game of the FISU World Championships at Mestsky Stadium in Brno, Czech Republic. It was Team USA's third consecutive FISU title.

The U.S. squad completed its 2008 tour 24-0 and established a national team record for lowest staff ERA at 0.88. Fellow Big 12 pitchers Kyle Gibson (Missouri), Tyler Lyons and Andrew Oliver (Oklahoma State) along with Volz were apart of the Team USA bullpen, which did not allow more than two earned runs in any game and tossed its sixth shutout of the summer in the FISU title contest.

Kansas head coach Ritch Price served as an assistant coach for the squad.





### BIG 12 ON THE TELEVISION

Big 12 baseball will be aired on FSN Southwest, FSN Midwest, FSN Rocky Mountain, and other FSN regional outlets during the 2009 season (check local listings for live airings and replays).

In addition, ESPNU, ESPN, ESPN2, Fox College Sports and CBS College Sports may also televise games. ESPN and its affiliates will carry most NCAA Regional contests as well as all NCAA Super Regional and College World Series games live from Omaha, Neb.

The FSN/Big 12 baseball television package is in its 13th year. FSN Southwest is scheduled to air the championship game of the 2009 Phillips 66 Big 12 Baseball Championship from Oklahoma City for the sixth consecutive season. Additional telecasts from the championship may be announced at a later date.

### BIG 12 ON THE RADIO

Big 12 baseball is carried live on 10 flagship stations and a number of other outlets in addition to satellite radio for selected contests.

School	Flagship Station(s)	Dial
Baylor	KRZI (ESPN Radio)	1660
Kansas	KLWN	1320
Kansas State	KMAN	1350
Missouri	KTGR	1580
Nebraska	KLIN – Lincoln KFAB – Omaha	1400 1110
Oklahoma	KOKC - Oklahoma City	1520
Oklahoma State	KSPI-AM/FM	780, 93.7
Texas	KVET-AM/FM	1300, 98.1
Texas A&M	WTAW-AM	1620
Texas Tech	KKAM	1340

Several Big 12 outlets are affiliated with larger networks. Check the Big 12 web site and member schools' links at [www.big12sports.com](http://www.big12sports.com) for the latest broadcast information.



### PHILLIPS 66 BIG 12 BASEBALL CHAMPIONSHIP FORMAT

The eight teams with the best conference records (based on winning percentage) in regular season competition will qualify for the Phillips Big 12 Baseball Championship. The event is in a two-division, pool play format, in which each of the squads competing is guaranteed a minimum of three games.

Results from the league's 27-game round-robin conference schedule will determine the eight seeds for the Championship. Seeds 1, 4, 5 and 8 will compete in pool play on one side of the bracket, while teams seeded No. 2, 3, 6 and 7 will play in the other. The two teams with the best record within their bracket will advance to the Championship game, with the winner earning the Big 12's automatic berth into the NCAA Championship. Head-to-head competition will break ties within each bracket. In the event of more than two teams being tied for the top spot within a bracket, the highest-seeded team will advance to Sunday's winner-take-all Championship game.

### Rainout Policy:

In the event divisional play cannot be completed to determine a divisional champion (due to weather-related or other circumstances) the following tiebreaking procedures will take place to determine which two teams shall play in the championship:

- 1) Team with the best record in each division by winning percentage.
- 2) If two or more teams are still tied, the highest seeded team amongst the tied moves on as the Division Champion.



### CHAMPIONSHIP SCHEDULE

#### Wed., May 20

Game 1:	Teams To Be Determined	9:00 a.m.
Game 2:	Teams To Be Determined	12:30 p.m.
Game 3:	Teams To Be Determined	4:00 p.m.
Game 4:	Teams To Be Determined	7:30 p.m.

#### Thu., May 21

Game 5:	Teams To Be Determined	3:00 p.m.
Game 6:	Teams To Be Determined	7:30 p.m.

#### Fri., May 22

Game 7:	Teams To Be Determined	3:00 p.m.
Game 8:	Teams To Be Determined	7:30 p.m.

#### Sat., May 23

Game 9:	Teams To Be Determined	9:00 a.m.
Game 10:	Teams To Be Determined	12:30 p.m.
Game 11:	Teams To Be Determined	4:00 p.m.
Game 12:	Teams To Be Determined	7:30 p.m.

#### Sun., May 24

Game 13:	Division 1 Champion vs. Division 2 Champion {FSN}	1:00 p.m.
----------	--	-----------





DAY	DATE	GAME	BALLPARK	TIME (CT)
Fri.	Feb. 20	Service Academy Classic; Millington, Tenn. Kansas vs. Air Force Southern Utah at Texas Tech Western Illinois at Oklahoma Illinois-Chicago at Texas BYU at Oklahoma State Service Academy Classic; Millington, Tenn. Kansas vs. Memphis UT-Pan American at Texas Tech Pacific at Baylor Kansas State at Houston Nebraska at UL-Lafayette Wright State at Texas A&M Phoenix Tournament; Phoenix, Ariz. Missouri vs. Nevada	USA  DLF DMP DFF ARS USA  DLF BBP CF MOF OF BRS	 1:00 p.m. 1:00 p.m. 3:00 p.m. 3:00 p.m. 4:00 p.m.  4:00 p.m. 4:00 p.m. 6:30 p.m. 6:30 p.m. 6:30 p.m. 6:35 p.m. 8:00 p.m.
Sat.	Feb. 21	Western Illinois at Oklahoma (DH) Illinois-Chicago at Texas Service Academy Classic; Millington, Tenn. Kansas vs. Bradley Wright State at Texas A&M (DH) Kansas State at Houston Nebraska at UL-Lafayette Pacific at Baylor Manhattan at Oklahoma State Southern Utah at Texas Tech Phoenix Tournament; Phoenix, Ariz. Missouri vs. Gonzaga BYU at Oklahoma State	DMP DFF USA  OF CF MOF BBP ARS DLF BRS  ARS	Noon 12:30 p.m.  1:00 p.m. 1:05 p.m. 2:00 p.m. 2:00 p.m. 3:00 p.m. 3:00 p.m. 3:00 p.m.  4:00 p.m. 6:30 p.m.
Sun.	Feb. 22	Service Academy Classic; Millington, Tenn. Kansas vs. Bradley Phoenix Tournament; Phoenix, Ariz. Missouri vs. Nevada Pacific at Baylor Nebraska at UL-Lafayette Kansas State at Houston Wright State at Texas A&M Western Illinois at Oklahoma Manhattan at Oklahoma State Illinois-Chicago at Texas Phoenix Tournament; Phoenix, Ariz. Missouri vs. Gonzaga UT-Pan American at Texas Tech	USA  BRS  BBP MOF CF OF DMP ARS DFF BRS  DLF	10:00 a.m.  11:00 a.m. Noon Noon Noon 12:05 p.m. 1:00 p.m. 1:00 p.m. 1:00 p.m.  3:00 p.m. 3:00 p.m.
Mon.	Feb. 23	BYU at Baylor	BBP	6:30 p.m.
Tue.	Feb. 24	Kansas at Arkansas UT-Arlington at Texas Oklahoma at San Diego New Mexico at Texas Tech Centenary at Texas A&M Missouri at Arizona State	BS DFF CS DLF OF PS	3:00 p.m. 3:00 p.m. 4:00 p.m. 4:00 p.m. 6:35 p.m. 7:30 p.m.
Wed.	Feb. 25	New Mexico at Texas Tech Kansas at Arkansas Centenary at Texas A&M Oklahoma at San Diego Houston Baptist at Baylor	DLF BS OF CS BBP	2:00 p.m. 3:00 p.m. 3:05 p.m. 4:00 p.m. 6:30 p.m.
Thu.	Feb. 26	San Diego Tournament; San Diego, Calif. Kansas State vs. Pacific Keith LeClair Classic; Greenville, N.C. Oklahoma State vs. East Carolina Missouri at Arizona State	CS  CLS  PS	3:00 p.m.  4:00 p.m. 7:30 p.m.
Fri.	Feb. 27	San Diego Tournament; San Diego, Calif. Kansas State vs. Nevada Keith LeClair Classic; Greenville, N.C. Oklahoma State vs. College of Charleston Houston College Classic; Houston, Texas Texas A&M vs. UC Irvine	CS  CLS  MMP	Noon  Noon  Noon



# COMPOSITE SCHEDULE

2009 Big 12 Baseball Media Guide

www.big12sports.com



BIG 12

TEAMS

2008 REVIEW

RECORD BOOK

HISTORY

		Arizona State Tournament; Tempe, Ariz. Missouri vs. Oregon State Hillcrest Ford Bearkat Classic, Huntsville, Texas Nebraska vs. Missouri State Penn State at Texas Houston College Classic; Houston, Texas Baylor vs. Houston Texas Tech at Cal State Northridge Oklahoma at Washington State	PS BBS DFF MMP MATF BBF	2:00 p.m. 2:00 p.m. 3:00 p.m. 3:30 p.m. 4:00 p.m. 7:30 p.m.
Sat.	Feb. 28	San Diego Tournament; San Diego, Calif. Kansas State at San Diego Penn State at Texas (DH) Nebraska vs. Saint Mary's Keith LeClair Classic; Greenville, N.C. Oklahoma State vs. East Carolina Arizona State Tournament; Tempe, Ariz. Missouri vs. Northern Illinois Texas Tech at Cal State Northridge Houston College Classic; Houston, Texas Baylor vs. UCLA Oklahoma at Washington State (DH) Hillcrest Ford Bearkat Classic, Huntsville, Texas Nebraska at Sam Houston State Houston College Classic; Houston, Texas Texas A&M vs. Rice	CS DFF BBS CLS PS MATF MMP BBF BBS MMP	Noon 12:30 p.m. 1:30 p.m. 2:00 p.m. 2:00 p.m. 3:00 p.m. 3:30 p.m. 4:00 p.m. 5:00 p.m. 7:00 p.m.
Sun.	March 1	Keith LeClair Classic; Greenville, N.C. Oklahoma State vs. St. John's Hillcrest Ford Bearkat Classic, Huntsville, Texas Nebraska vs. Missouri State San Diego Tournament; San Diego, Calif. Kansas State at San Diego State Penn State at Texas Houston College Classic, Houston, Texas Baylor vs. Rice Arizona State Tournament; Tempe, Ariz. Missouri at Arizona State Oklahoma at Washington State Texas Tech at Cal State Northridge Houston College Classic; Houston, Texas Texas A&M vs. Houston	CLS BBS TGS DFF MMP PS BBF MATF MMP	9:00 a.m. 10:00 a.m. 1:00 p.m. 1:00 p.m. 2:30 p.m. 2:30 p.m. 3:00 p.m. 3:00 p.m. 6:00 p.m.
Tue.	March 3	Arkansas-Little Rock at Oklahoma (DH) South Dakota State at Nebraska North Dakota at Kansas Creighton at Kansas State Texas at Texas State Stephen F. Austin at Texas A&M Texas Tech at UC Riverside	DMP HF HBP TFS BF OF RS	1:00 p.m. 1:35 p.m. 3:00 p.m. 3:00 p.m. 6:00 p.m. 6:35 p.m. 8:00 p.m.
Wed.	March 4	North Dakota at Kansas Stephen F. Austin at Texas A&M Western Illinois at Missouri Baylor at TCU	HBP OF TS LS	3:00 p.m. 3:05 p.m. 4:00 p.m. 6:30 p.m.
Thu.	March 5	Palm Springs Baseball Invitational; Palm Springs, Calif. Texas Tech vs. UC Riverside Palm Springs Baseball Invitational; Palm Springs, Calif. Oklahoma State vs. Gonzaga	PSS PSS	Noon 8:00 p.m.
Fri.	March 6	Cal State Northridge at Nebraska Northwestern at Kansas Niagra at Kansas State UCLA at Oklahoma Palm Springs Baseball Invitational; Palm Springs, Calif. Oklahoma State vs. Oregon State South Alabama at Baylor Ball State at Missouri Utah at Texas A&M Texas at Stanford	HF HBP TFS DMP PSS BBP TS OF SD	1:05 p.m. 3:00 p.m. 3:00 p.m. 3:00 p.m. 4:00 p.m. 6:30 p.m. 6:30 p.m. 6:35 p.m. 7:00 p.m.







		<i>Palm Springs Invitational; Palm Springs, Calif.</i> Texas Tech vs. San Francisco Oklahoma State vs. Oregon State	PSS PSS	8:00 p.m. 9:00 p.m.
Sat.	March 7	Northwestern at Kansas (DH) Niagra at Kansas State (DH) UCLA at Oklahoma <i>Palm Springs Invitational; Palm Springs, Calif.</i> Texas Tech vs. Gonzaga Cal State Northridge at Nebraska (DH) Ball State at Missouri (DH) Texas at Stanford UC Irvine at Baylor Utah at Texas A&M <i>Palm Springs; Palm Springs, Calif.</i> Oklahoma State vs. San Francisco	HBP TFS DMP PSS  HF TS SD BBP OF PSS	Noon Noon Noon  Noon 1:05 p.m. 2:00 p.m. 3:00 p.m. 6:30 p.m. 6:35 p.m. 8:00 p.m.
Sun.	March 8	Niagara at Kansas State <i>Palm Springs; Palm Springs, Calif.</i> Texas Tech vs. Oregon State Northwestern at Kansas Ball State at Missouri UCLA at Oklahoma Cal State Northridge at Nebraska Utah at Texas A&M Texas at Stanford UAB at Baylor <i>Palm Springs; Palm Springs, Calif.</i> Oklahoma State vs. UC Riverside	TFS PSS  HBP TS DMP HF OF SD BBP PSS	11:00 a.m.  Noon 1:00 p.m. 1:00 p.m. 1:00 p.m. 1:05 p.m. 1:05 p.m. 2:00 p.m. 3:00 p.m. 8:00 p.m.
Mon.	March 9	California at Oklahoma	DMP	1:00 p.m.
Tue.	March 10	Houston Baptist at Oklahoma Kansas State vs. Arizona State Western Illinois at Missouri Cal State Fullerton at Texas A&M Oklahoma State at Arizona	DMP SS TS OF KF	1:00 p.m. 6:30 p.m. 6:30 p.m. 6:35 p.m. 8:00 p.m.
Wed.	March 11	Houston Baptist at Oklahoma Dallas Baptist at Texas Tech Baylor at Texas Wichita State at Kansas Kansas State vs. Arizona State Northwestern State at Texas A&M Oklahoma State at Arizona	DMP DLF DFF HBP SS OF KF	3:00 p.m. 3:00 p.m. 6:00 p.m. 6:00 p.m. 6:30 p.m. 6:35 p.m. 8:00 p.m.
Fri.	March 13	<i>Bulls Baseball Classic; Tampa, Fla.</i> Oklahoma vs. Bethune-Cookman Butler at Kansas State Missouri at Texas* Texas A&M at Baylor* Cal State Fullerton at Oklahoma State Nebraska at Texas Tech* Kansas vs. Arizona State	RMF  TFS DFF BBP ARS DLF SS	2:00 p.m. 3:00 p.m. 6:00 p.m. 6:30 p.m. 6:30 p.m. 6:30 p.m. 8:00 p.m.
Sat.	March 14	Butler at Kansas State (DH) Missouri at Texas* Rhode Island at Oklahoma State Nebraska at Texas Tech* <i>Bulls Classic; Tampa, Fla.</i> Oklahoma at South Florida Cal State Fullerton at Oklahoma State Baylor at Texas A&M* Kansas vs. Arizona State	TFS DFF ARS DLF RMF  ARS OF SS	Noon 2:00 p.m. 2:30 p.m. 5:00 p.m.  6:00 p.m. 6:30 p.m. 6:35 p.m. 8:00 p.m.
Sun.	March 15	<i>Bulls Classic; Tampa, Fla.</i> Oklahoma vs. Eastern Illinois Butler at Kansas State Missouri at Texas* Nebraska at Texas Tech*	RMF  TFS DFF DLF	11:00 a.m. 1:00 p.m. 1:00 p.m. 1:00 p.m.



# COMPOSITE SCHEDULE

2009 Big 12 Baseball Media Guide

www.big12sports.com



BIG 12

TEAMS

2008 REVIEW

RECORD BOOK

HISTORY

		Baylor at Texas A&M*	OF	1:05 p.m.
		Rhode Island at Oklahoma State	ARS	4:00 p.m.
		Kansas vs. Arizona State	SS	5:00 p.m.
Tue.	March 17	UT-San Antonio at Kansas State	TFS	6:30 p.m.
		Oklahoma at TCU	LS	6:30 p.m.
		Western Illinois at Oklahoma State	ARS	6:30 p.m.
		Texas Tech at Texas A&M-Corpus Christi	WBF	6:30 p.m.
		Nebraska at Arkansas	BS	6:35 p.m.
		New Mexico at Texas A&M	OF	6:35 p.m.
		Texas at Rice	DFF	7:00 p.m.
		Kansas at San Diego State	TGS	8:00 p.m.
Wed.	March 18	New Mexico at Texas A&M	OF	1:05 p.m.
		Nebraska at Arkansas	BS	3:05 p.m.
		UT-San Antonio at Kansas State	TFS	6:30 p.m.
		SIU-Edwardsville at Missouri	TS	6:30 p.m.
		Texas Tech at Texas A&M-Corpus Christi	WBF	6:30 p.m.
		Kansas at San Diego State	TGS	8:00 p.m.
		Western Illinois at Oklahoma State	ARS	TBA
Fri.	March 20	Oklahoma State at Nebraska*	HF	2:05 p.m.
		Texas at Kansas*	HBP	3:00 p.m.
		Texas Tech at Baylor*	BBP	6:30 p.m.
		Oklahoma at Kansas State*	TFS	6:30 p.m.
		Texas A&M at Missouri*	TS	6:30 p.m.
Sat.	March 21	Texas at Kansas*	HBP	1:00 p.m.
		Oklahoma at Kansas State*	TFS	2:00 p.m.
		Texas A&M at Missouri*	TS	2:00 p.m.
		Oklahoma State at Nebraska*	HF	2:05 p.m.
		Texas Tech at Baylor*	BBP	6:30 p.m.
Sun.	March 22	Texas Tech at Baylor*	BBP	1:00 p.m.
		Texas at Kansas*	HBP	1:00 p.m.
		Oklahoma at Kansas State*	TFS	1:00 p.m.
		Texas A&M at Missouri*	TS	1:00 p.m.
		Oklahoma State at Nebraska*	HF	1:05 p.m.
Mon.	March 23	Lubbock Christian at Texas Tech	DLF	6:30 p.m.
Tue.	March 24	Western Illinois at Kansas	HBP	3:00 p.m.
		Northern Colorado at Nebraska	HF	6:05 p.m.
		Baylor at Sam Houston State	BBS	6:30 p.m.
		Northwestern at Kansas State	TFS	6:30 p.m.
		Illinois-Chicago at Missouri	TS	6:30 p.m.
		UNLV at Oklahoma State	ARS	6:30 p.m.
		UT-Arlington at Texas A&M	OF	6:35 p.m.
		Central Arkansas at Oklahoma	DMP	7:00 p.m.
Wed.	March 25	Northern Colorado at Nebraska	HF	1:35 p.m.
		Western Illinois at Kansas	HBP	3:00 p.m.
		Illinois-Chicago at Missouri	TS	3:00 p.m.
		Dallas Baptist at Texas	DFF	6:00 p.m.
		TCU at Baylor	BBP	6:30 p.m.
		Northwestern at Kansas State	TFS	6:30 p.m.
		UNLV at Oklahoma State	ARS	6:30 p.m.
		Texas Tech at Texas State	BF	6:30 p.m.
Fri.	March 27	Texas Tech at Texas*	DFF	6:00 p.m.
		Kansas State at Baylor*	BBP	6:30 p.m.
		Nebraska at Oklahoma*	DMP	6:30 p.m.
		Missouri at Oklahoma State*	ARS	6:30 p.m.
		Kansas at Texas A&M*	OF	6:35 p.m.
Sat.	March 28	Nebraska at Oklahoma*	DMP	2:00 p.m.
		Missouri at Oklahoma State*	ARS	2:00 p.m.
		Texas Tech at Texas*	DFF	2:00 p.m.
		Kansas at Texas A&M*	OF	2:05 p.m.
		Kansas State at Baylor*	BBP	6:30 p.m.





www.big12sports.com

# COMPOSITE SCHEDULE

## 2009 Big 12 Baseball Media Guide

BIG 12

TEAMS

2008 REVIEW

RECORD BOOK

HISTORY

Sun.	March 29	Nebraska at Oklahoma* Missouri at Oklahoma State* Texas Tech at Texas* Kansas at Texas A&M* Kansas State at Baylor*	DMP ARS DFF OF BBP	1:00 p.m. 1:00 p.m. 1:00 p.m. 1:05 p.m. 1:30 p.m.
Tue.	March 31	Northern Colorado at Kansas Oral Roberts at Texas Texas State at Baylor UT-San Antonio at Texas A&M Nebraska at Wichita State Texas Tech at New Mexico	HBP DFF BBP OF ES IP	3:00 p.m. 6:00 p.m. 6:30 p.m. 6:35 p.m. 7:00 p.m. 7:00 p.m.
Wed.	April 1	Northern Colorado at Kansas Texas Tech at New Mexico Kansas State at Creighton Prairie View A&M at Baylor Missouri vs. Saint Louis	HBP IP RBS BBP BUS	3:00 p.m. 3:00 p.m. 6:00 p.m. 6:30 p.m. 7:15 p.m.
Fri.	April 3	Texas at Oklahoma State* Baylor at Kansas* Kansas State at Nebraska* Oklahoma at Missouri* Texas A&M at Texas Tech*	ARS HBP HF TS DLF	2:00 p.m. 6:00 p.m. 6:05 p.m. 6:30 p.m. 6:30 p.m.
Sat.	April 4	Baylor at Kansas* Oklahoma at Missouri* Texas at Oklahoma State* Kansas State at Nebraska* Texas A&M at Texas Tech*	HBP TS ARS HF DLF	2:00 p.m. 2:00 p.m. 2:00 p.m. 2:05 p.m. 5:00 p.m.
Sun.	April 5	Baylor at Kansas* Oklahoma at Missouri* Texas A&M at Texas Tech* Texas at Oklahoma State* Kansas State at Nebraska*	HBP TS DLF ARS HF	1:00 p.m. 1:00 p.m. 1:00 p.m. 1:00 p.m. 1:05 p.m.
Tue.	April 7	Texas Tech vs. UT-San Antonio (DH) Kansas at Iowa TCU at Texas Creighton at Nebraska Northwestern State at Baylor Minnesota at Missouri Houston at Texas A&M	CB HBP DFF HF BBP TS OF	3:30 p.m. 6:00 p.m. 6:00 p.m. 6:05 p.m. 6:30 p.m. 6:30 p.m. 6:35 p.m.
Wed.	April 8	Minnesota at Missouri Dallas Baptist at Baylor Oklahoma State at Missouri State Oklahoma at Wichita State UT-San Antonio vs. Texas Tech	TS BBP HMF ES CB	4:00 p.m. 6:30 p.m. 6:30 p.m. 7:00 p.m. 6:00 p.m.
Thu.	April 9	Kansas at Iowa Texas A&M at Kansas State* Texas at Nebraska*	HBP TFS HF	4:00 p.m. 6:30 p.m. 6:05 p.m.
Fri.	April 10	Texas at Nebraska* Missouri at Baylor* Texas A&M at Kansas State* Texas Tech at Oklahoma*	HF BBP TFS DMP	6:05 p.m. 6:30 p.m. 6:30 p.m. 6:30 p.m.
Sat.	April 11	Texas at Nebraska* Texas A&M at Kansas State* Texas Tech at Oklahoma* Oklahoma State at Kansas* Missouri at Baylor*	HF TFS DMP HBP BBP	1:05 p.m. 2:00 p.m. 2:00 p.m. 6:00 p.m. 6:30 p.m.
Sun.	April 12	Oklahoma State at Kansas* Texas Tech at Oklahoma* Missouri at Baylor*	HBP DMP BBP	1:00 p.m. 1:00 p.m. 1:30 p.m.





# COMPOSITE SCHEDULE

## 2009 Big 12 Baseball Media Guide

www.big12sports.com



Tue.	April 14	Arkansas-Pine Bluff at Oklahoma State (DH) Texas A&M-Corpus Christi at Texas Iowa at Nebraska Baylor at UT-Arlington Kansas at Creighton Wichita State at Kansas State Indiana State at Missouri Alabama A&M at Texas Tech TCU at Oklahoma Texas A&M at Rice	ARS DFF HF CGB RBS TFS TS DLF DMP RP	3:00 p.m. 6:00 p.m. 6:05 p.m. 6:30 p.m. 6:30 p.m. 6:30 p.m. 6:30 p.m. 6:30 p.m. 7:00 p.m. 7:00 p.m.
Wed.	April 15	Alabama A&M at Texas Tech Indiana State at Missouri Texas A&M-Corpus Christi at Texas UT-Arlington at Baylor Wichita State at Kansas State Arkansas-Pine Bluff at Oklahoma State	DLF TS DFF BBP TFS ARS	3:00 p.m. 4:00 p.m. 6:00 p.m. 6:30 p.m. 7:00 p.m. TBA
Fri.	April 17	Oklahoma at Texas* Missouri at Kansas State* Baylor at Oklahoma State* Kansas at Texas Tech* Nebraska at Texas A&M*	DFF TFS ARS DLF OF	6:00 p.m. 6:30 p.m. 6:30 p.m. 6:30 p.m. 6:35 p.m.
Sat.	April 18	Missouri at Kansas State* Baylor at Oklahoma State* Oklahoma at Texas* Nebraska at Texas A&M* Kansas at Texas Tech*	TFS ARS DFF OF DLF	2:00 p.m. 2:00 p.m. 2:00 p.m. 2:05 p.m. 5:00 p.m.
Sun.	April 19	Missouri at Kansas State* Baylor at Oklahoma State* Oklahoma at Texas* Kansas at Texas Tech* Nebraska at Texas A&M*	TFS ARS DFF DLF OF	1:00 p.m. 1:00 p.m. 1:00 p.m. 1:00 p.m. 1:05 p.m.
Tue.	April 21	Rice at Texas Texas State at Baylor Nebraska at Creighton Oklahoma State at Wichita State UNLV at Texas Tech	DFF BBP RBS ES DLF	6:00 p.m. 6:30 p.m. 6:30 p.m. 7:00 p.m. 7:00 p.m.
Wed.	April 22	UNLV at Texas Tech Missouri State at Oklahoma State Prairie View A&M at Texas A&M Kansas vs. Missouri Wichita State at Oklahoma	DLF ARS OF KS DMP	Noon 6:30 p.m. 6:35 p.m. 7:00 p.m. 7:00 p.m.
Fri.	April 24	Nebraska at Kansas* Kansas State at Texas* Oklahoma at Baylor* Texas Tech at Missouri* Oklahoma State at Texas A&M*	HBP DFF BBP TS OF	6:00 p.m. 6:00 p.m. 6:30 p.m. 6:30 p.m. 6:35 p.m.
Sat.	April 25	Texas Tech at Missouri* Kansas State at Texas* Oklahoma State at Texas A&M* Nebraska at Kansas* Oklahoma at Baylor*	TS DFF OF HBP BBP	2:00 p.m. 2:00 p.m. 2:05 p.m. 6:00 p.m. 6:30 p.m.
Sun.	April 26	Nebraska at Kansas* Texas Tech at Missouri* Kansas State at Texas* Oklahoma State at Texas A&M* Oklahoma at Baylor*	HBP TS DFF OF BBP	1:00 p.m. 1:00 p.m. 1:00 p.m. 1:05 p.m. 1:30 p.m.
Tue.	April 28	Chicago State at Kansas Texas State at Texas New Mexico at Nebraska UT-San Antonio at Baylor	HBP DFF HF BBP	6:00 p.m. 6:00 p.m. 6:05 p.m. 6:30 p.m.

BIG 12

TEAMS

2008 REVIEW

RECORD BOOK

HISTORY





		North Dakota at Kansas State Missouri vs. Eastern Illinois Oklahoma at Arkansas UT-Arlington at Oklahoma State TCU at Texas A&M	TFS HB BS ARS OF	6:30 p.m. 6:30 p.m. 6:30 p.m. 6:30 p.m. 6:35 p.m.
Wed.	April 29	New Mexico at Nebraska Chicago State at Kansas North Dakota at Kansas State Missouri at Missouri State	HF HBP TFS HMF	1:35 p.m. 6:00 p.m. 6:30 p.m. 7:00 p.m.
Thu.	April 30	Dallas Baptist at Texas A&M	OF	6:35 p.m.
Fri.	May 1	Baylor at Texas* Missouri at Nebraska* Kansas at Oklahoma* Kansas State at Oklahoma State* Dallas Baptist at Texas A&M	DFF HF DMP ARS OF	6:00 p.m. 6:05 p.m. 6:30 p.m. 6:30 p.m. 6:35 p.m.
Sat.	May 2	Kansas at Oklahoma* Kansas State at Oklahoma State* Missouri at Nebraska* Dallas Baptist at Texas A&M Texas at Baylor*	DMP ARS HF OF BBP	2:00 p.m. 2:00 p.m. 2:05 p.m. 2:05 p.m. 6:30 p.m.
Sun.	May 3	Kansas at Oklahoma* Kansas State at Oklahoma State* Missouri at Nebraska* Texas at Baylor*	DMP ARS HF BBP	1:00 p.m. 1:00 p.m. 1:05 p.m. 1:30 p.m.
Mon.	May 4	BYU at Kansas State Southern Utah at Oklahoma	TFS DMP	6:30 p.m. 7:00 p.m.
Tue.	May 5	BYU at Kansas State Missouri State at Missouri Oklahoma at UT-Arlington Sam Houston State at Texas A&M	TFS TS CGB OF	6:30 p.m. 6:30 p.m. 6:30 p.m. 6:35 p.m.
Wed.	May 6	Texas Southern at Texas Texas Tech at Dallas Baptist Kansas at Wichita State	DFF PF ES	6:00 p.m. 6:30 p.m. 7:00 p.m.
Fri.	May 8	Cal State Bakersfield at Nebraska Texas Tech at Kansas State* Kansas at Missouri* Texas at Texas A&M* Oklahoma vs. Oklahoma State*	HF TFS TS OF DS	6:05 p.m. 6:30 p.m. 6:30 p.m. 6:35 p.m. 7:35 p.m.
Sat.	May 9	Texas Tech at Kansas State* Kansas at Missouri* Cal State Bakersfield at Nebraska (DH) Texas A&M at Texas* Oklahoma vs. Oklahoma State*	TFS TS HF DFF ABB	2:00 p.m. 2:00 p.m. 2:05 p.m. 4:00 p.m. 7:05 p.m.
Sun.	May 10	Texas Tech at Kansas State* Kansas at Missouri* Texas A&M at Texas* Cal State Bakersfield at Nebraska Oklahoma vs. Oklahoma State*	TFS TS DFF HF ABB	1:00 p.m. 1:00 p.m. 1:00 p.m. 1:05 p.m. 4:05 p.m.
Tue.	May 12	Stephen F. Austin at Baylor Mississippi Valley State at Texas Tech Texas State at Texas A&M Nebraska vs. Creighton	BBP DLF OF RBS	6:30 p.m. 6:30 p.m. 6:35 p.m. 7:00 p.m.
Fri.	May 15	Baylor at Nebraska* Kansas at Kansas State* Texas A&M at Oklahoma* Oklahoma State at Texas Tech* Cal State Bakersfield at Missouri	HF TFS DMP DLF TS	6:05 p.m. 6:30 p.m. 6:30 p.m. 6:30 p.m. 6:30 p.m.



# COMPOSITE SCHEDULE

## 2009 Big 12 Baseball Media Guide

www.big12sports.com



Sat.	May 16	Alabama A&M at Texas (DH) Oklahoma State at Texas Tech* Cal State Bakersfield at Missouri Baylor at Nebraska* Kansas State at Kansas* Texas A&M at Oklahoma*	DFF DLF TS HF HBP DMP	1:00 p.m. 1:00 p.m. 2:00 p.m. 2:05 p.m. 6:00 p.m. 6:30 p.m.
Sun.	May 17	Cal State Bakersfield at Missouri Texas A&M at Oklahoma* Oklahoma State at Texas Tech* Baylor at Nebraska* Kansas State at Kansas*	TS DMP DLF HF HBP	1:00 p.m. 1:00 p.m. 1:00 p.m. 1:05 p.m. 5:00 p.m.
Wed.-Sun.	May 20-24	Phillips 66 Big 12 Championship	ABB	TBA

### BALLPARK KEY

ABB:	AT&T Bricktown Ballpark; Oklahoma City, Okla.
ARS:	Allie P. Reynolds Stadium; Stillwater, Okla.
BF:	Bobcat Field; San Marcos, Texas
BBF:	Bailey-Brayton Field; Pullman, Wash.
BBP:	Baylor Ballpark; Waco, Texas
BBS:	Bearkat Baseball Stadium; Huntsville, Texas
BRS:	Brazell Stadium; Phoenix, Ariz.
BS:	Baum Stadium; Fayetteville, Ark.
BUS:	Busch Stadium; St. Louis, Mo.
CB:	Citibank Ballpark; Midland, Texas
CLS:	Clark-LeClair Stadium; Greenville, N.C.
CF:	Cougar Field; Houston, Texas
CGB:	Clay Gould Ballpark; Arlington, Texas
CS:	Cunningham Stadium; San Diego, Calif.
DLF:	Dan Law Field; Lubbock, Texas
DFF:	UFCU Disch-Falk Field; Austin, Texas
DMP:	L. Dale Mitchell Park; Norman, Okla.
DS:	Drillers Stadium; Tulsa, Okla.
ES:	Eck Stadium; Wichita, Kan.
HB:	Hughes Ballpark; O'Fallon, Mo.
HBP:	Hoglund Ballpark; Lawrence, Kan.
HF:	Hawks Field; Lincoln, Neb.
HMF:	Hammons Field; Springfield, Mo.
IP:	Isotopes Park; Albuquerque, N.M.
KF:	Kindall Field; Tucson, Ariz.
KS:	Kauffman Stadium; Kansas City, Mo.
LS:	Lupton Stadium; Fort Worth, Texas
MATF:	Matador Field; Northridge, Calif.
MMP:	Minute Maid Park; Houston, Texas
MOF:	Moore Field; Lafayette, La.
OF:	Olsen Field; College Station, Texas
PF:	Patriot Field; Dallas, Texas
PS:	Packard Stadium; Tempe, Ariz.
PSS:	Palm Springs Stadium; Palm Springs, Calif.
RBS:	Rosenblatt Stadium; Omaha, Neb.
RMF:	Red McEwen Field; Tampa, Fla.
RP:	Reckling Park; Houston, Texas
RS:	Riverside Stadium; Riverside, Calif.
SD:	Sunken Diamond; Stanford, Calif.
SS:	Surprise Stadium; Surprise, Ariz.
TFS:	Tointon Family Stadium; Manhattan, Kan.
TGS:	Tony Gwynn Stadium; San Diego, Calif.
TS:	Taylor Stadium; Columbia, Mo.
USA:	USA Stadium; Millington, Tenn.

All times Central and subject to change.

(DH) - Doubleheader

\* - Big 12 Conference game

BIG 12

TEAMS

2008 REVIEW

RECORD BOOK

HISTORY







www.big12sports.com

## CORPORATE PARTNERS

2009 Big 12 Baseball Media Guide

The Big 12 Conference would like to thank its corporate partners for their continued support of Big 12 Athletics.

For information on how to become a corporate sponsor, please contact:

Ami Annett  
ESPN Regional  
469/524-1030



The Big 12 Store, operated by the Paradise Shops, sells and promotes merchandise from all 12 member schools at the Will Rogers World Airport in Oklahoma City.

BIG 12

TEAMS

2008 REVIEW

RECORD BOOK

HISTORY





Dan Beebe was named the third commissioner of the Big 12 Conference on September 5, 2007, after serving as senior associate commissioner and chief operating officer for the league since February 2003.

In his first year, Beebe was able to enjoy the Big 12's first national championship in men's basketball, two teams in the Bowl Championship Series and numerous individual NCAA titles. Off the field, he guided the conference schools to a continuation of their revenue sharing model, with a record \$113.5-million going back to the membership. In the area of special projects, he oversaw a continued and expanded Big 12 relationship with Special Olympics in each of the league's seven states.

While in his previous role at the Big 12, Beebe handled issues related to governance, national policy and legal affairs, in addition to coordinating the day-to-day activities of the conference office. He also served as the conference liaison to the Big 12 Board of Directors. Beebe has been involved in site selection for future league championships, extending television contracts and enhancing football bowl opportunities. In addition, he has been active in establishing the conference's sportsmanship policies and procedures.

Prior to joining the Big 12, Beebe was commissioner of the Ohio Valley Conference from 1989-2003. Upon his appointment, he became the youngest leader of a Division I football-playing conference.

During his time, he made the OVC more attractive in areas of television appearances as exposure nearly tripled. He also enhanced championships and revenue generation, ensured sportsmanship and fair play, promoted gender equity, and gained national recognition for the league. He was a strong proponent of providing opportunities for female student-athletes, as the league added three women's championships during his time.

Under his direction, the OVC added five new members. He also placed an emphasis on ethics and sportsmanship within the league, producing a nationally recognized sportsmanship statement and participating in regional and national seminars on the topic.

Over the course of his career, Beebe has built a strong reputation nationally in college athletics and has been selected to some of the NCAA's most significant committees. He was a member of the



prestigious NCAA Management Council, serving as chair of the Council's I-AA Governance Committee. He also chaired the Council's Committee on Fines and Forfeitures and was part of its Subcommittee for Student-Athlete Issues. Beebe was picked to fill the required commissioner's position on the initial NCAA Athletics Certification Committee that formalized and implemented the program adopted by the NCAA membership. He also previously served on the NCAA Nominating, Professional Sports Liaison, Football Issues, I-AA Football and Federal Arbitration Act committees.

Prior to his conference work, Beebe was a Director of Enforcement at the NCAA. He started at the NCAA in 1982 as an enforcement representative and was involved with numerous high-profile cases, including those at Houston, Mississippi and SMU. That tenure was interrupted by a one-year stint as an Assistant Director of Athletics at Wichita State University in 1986 before he returned to the NCAA office where he earned his Director of Enforcement promotion in 1988.

The 51-year old native of Walla Walla, Wash., received a degree from Walla Walla Community College in 1977. From there he moved on to California State Polytechnic University (Cal Poly-Pomona) where he earned his Bachelor of Science degree, cum laude, in social sciences in June 1979. Beebe received his law degree from the University of California Hastings College of the Law in 1982 and is a member of the Washington State Bar Association.

Besides his life's work, Beebe's ability to relate to student-athletes and others directly involved in college sports results from his own experience as a recruited football player. As an offensive lineman, Beebe was a four-year starter and served as captain of the varsity football teams at Walla Walla Community College and Cal Poly-Pomona. He continued his participation in athletics well after his college days, playing rugby, basketball, tennis, golf and other sports.

He was selected as one of the Outstanding Young Men of America in 1989 in recognition of his outstanding professional achievement, superior leadership ability and exceptional service to the community. In 1995, he was named an Institute for International Sport Ethics Fellow. Beebe has also served on various community boards, including the YMCA and Nashville Sports Council.

Born on February 27, 1957, Beebe is married to the former Molly Scanlon and has four children: daughters Jessie and Elaine and sons Matthew and Patrick.

### 2008-09 BIG 12 BOARD OF DIRECTORS OFFICERS

Chair .....	Bill Powers, Texas
Vice-Chair .....	Brady Deaton, Missouri
Treasurer .....	Greg Geoffroy, Iowa State
Secretary .....	Bud Peterson, Colorado
NCAA Representative .....	Harvey Perlman, Nebraska
Commissioner .....	Dan Beebe, Big 12
Assistant Secretary .....	Tim Weiser, Big 12



**Dan Beebe presents Texas' Brandon Belt with the 2008 Phillip; 66 Big 12 Baseball Championship Most Outstanding Player trophy.**





**TIM WEISER**  
*Deputy Commissioner*

**Responsibilities:** Chief Operating Officer; Daily oversight of conference office; Coordinate conference activities in Commissioner's absence; Oversight of Football, Men's Basketball and Financial Affairs; Assist commissioner in coordinating meetings and agendas for the Board of Directors

**Education:**  
Emporia State, 1981 [B.S., Psychology]  
Emporia State, 1982 [M.S., Counseling]

Joined Big 12 Staff: 2008



**TIM ALLEN**  
*Senior Associate Commissioner*

**Responsibilities:** Television; Football & Men's Basketball Scheduling; Corporate Relations, Marketing & Promotions; Men's Basketball Championship Director; Board of Athletics Directors Liaison

**Education:**  
Kansas State, 1977  
[B.S., Journalism & Mass Communication]

Joined Big 12 Staff: 1996



**DRU HANCOCK**  
*Senior Associate Commissioner*

**Responsibilities:** Olympic Sport Administration & Championships; Women's Basketball Operations & Administration; SWA Liaison

**Education:**  
Ohio State, 1974  
[B.A., Speech Communication]  
Ohio State, 1975 [M.A., Journalism]

Joined Big 12 Staff: 1996



**JOHN UNDERWOOD**  
*Associate Commissioner - Men's Basketball & Game Management*

**Responsibilities:** Men's Basketball Operations, Game Management & Officiating; Men's Basketball Championship Manager

**Education:**  
Texas A&M, 1968 [B.B.A., Finance]  
Texas A&M, 1971 [Masters, Education]

Joined Big 12 Staff: 2002



**STEVE PACE**  
*Chief Financial Officer*

**Responsibilities:**  
Conference Financial Activity

**Education:**  
UT Arlington, 1977 [B.B.A., Accounting]

Joined Big 12 Staff: 1996



**BOB BURDA**  
*Assistant Commissioner - Communications*

**Responsibilities:** Management of conference communications and media operations; Big 12 and football media contact

**Education:**  
Oakland, 1985 [B.S., Communications]  
Florida State, 1991  
[M.A., Marketing Communications]

Joined Big 12 Staff: 2004



**BRAD CLEMENTS**  
*Assistant Commissioner - Events & Human Resources*

**Responsibilities:** Football Championship Game; Men's Basketball Championship Support; Spring & General Meetings Coordination

**Education:**  
Texas A&M, 1991 [B.S., Kinesiology]

Joined Big 12 Staff: 1996



**LORI EBIHARA**  
*Assistant Commissioner - Governance, Compliance & Academics*

**Responsibilities:** Compliance; Governance; NCAA Committees

**Education:**  
Ohio State, 1988 [B.A., Journalism]  
Ashland, 1992 [Masters, Education]

Joined Big 12 Staff: 1996



**DAYNA SCHERF**  
*Assistant Commissioner - Championships*

**Responsibilities:** Olympic Sport Administration & Championships; Women's Basketball Championship Manager

**Education:**  
Dayton, 1993  
[B.S., Education - Sport Management]  
Ohio State, 1995  
[M.A., Sport Management]

Joined Big 12 Staff: 1999



**EDWARD T. STEWART**  
*Assistant Commissioner - Football & Student Services*

**Responsibilities:** Football Administration & Operations; Student Services

**Education:**  
Nebraska, 1994 [B.A., Psychology]  
Michigan State, 2000  
[M.A., Adult & Continuing Education]

Joined Big 12 Staff: 2006







**KERI BOYCE**  
*Director of Compliance*

**Responsibilities:** Compliance Services;  
Student-Athlete Advisory Committee

**Education:**  
Kentucky, 2003  
[B.A., Business Administration in Marketing]  
Central Florida, 2005  
[M.A., Business Admin./Sport Business  
Administration]

**Joined Big 12 Staff:** 2007



**ROB CAROLLA**  
*Director of Communications*

**Responsibilities:** Communications & Media  
Relations; Men's Basketball Media  
Contact & Championship Media Director

**Education:**  
Connecticut, 1994  
[B.A., Communication Sciences]

**Joined Big 12 Staff:** 2004



**DONNIE DUNCAN**  
*Director of Football Championship*

**Responsibilities:** Football Championship Game  
Director

**Education:**  
Austin College, 1962 [B.A., History]  
Austin College, 1964  
[M.A., Education Administration]

**Joined Big 12 Staff:** 1996



**MAARK KEITH**  
*Director of Marketing*

**Responsibilities:** Conference marketing  
and licensing efforts

**Education:**  
Howard, 1993 [B.A., Political Science]

**Joined Big 12 Staff:** 2002



**WALT ANDERSON**  
*Coordinator of Football Officials*

**Responsibilities:** Coordinate Football  
Officiating Crews

**Education:**  
Sam Houston State, 1974  
[B.S., Biology/Chemistry]  
Texas, 1978 [Doctorate of Dentistry]

**Joined Big 12 Staff:** 2006



**JONI LEHMANN**  
*Associate Director of Communications*

**Responsibilities:** Communications & Media  
Relations; Football & Women's Basketball  
Media Contact

**Education:**  
Oklahoma, 1990 [B.A., Journalism]

**Joined Big 12 Staff:** 1998



**CARMEN BRANCH**  
*Assistant Director of Communications*

**Responsibilities:** Communications & Media  
Relations; Volleyball & Baseball Media  
Contact; Academic Teams

**Education:**  
Kansas, 2001 [B.S., Journalism]

**Joined Big 12 Staff:** 2001

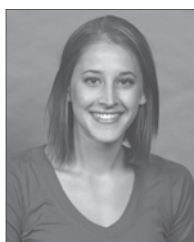


**SEAN HOLLISTER**  
*Assistant Director of Video Services*

**Responsibilities:** Video Support for Conference  
Officiating; New Video Technologies

**Education:**  
UL Monroe, 1987 [B.A., Radio/TV/Film]

**Joined Big 12 Staff:** 2006



**BLAIR BENEKE**  
*Championships Manager*

**Responsibilities:** Olympic Sport &  
Championship Administration

**Education:**  
Texas, 2006  
[B.S., Kinesiology - Sport Management]

**Joined Big 12 Staff:** 2006



**KIRON ANDERSEN**  
*Internet Services Coordinator*

**Responsibilities:** Web Site and Intranet  
Services

**Education:**  
Iowa State, 1998  
[B.A., Exercise & Sport Science - Sport  
Management]

**Joined Big 12 Staff:** 2008





**TIM FRICK**  
*Business and Ticket Manager*

**Responsibilities:** Finances & Accounting

**Education:**  
Oklahoma, 2006  
[B.B.A., Finance and Accounting]

**Joined Big 12 Staff:** 2007



**MELANIE ELLIS**  
*Executive Assistant to the Commissioner/  
Manager of Executive Affairs*

**Responsibilities:** Executive Assistant; Manager  
Executive Affairs; Management of  
Executive Operations

**Joined Big 12 Staff:** 1999



**REGINA EVERETT**  
*Administrative Assistant*

**Responsibilities:**  
Football Regular Season & Championship  
Administration; Basketball Officiating &  
Championship Administration

**Joined Big 12 Staff:** 1997



**TRACY HUNT**  
*Administrative Assistant*

**Responsibilities:**  
Football Officiating & Administration

**Joined Big 12 Staff:** 1996



**VALERIE ROCHA**  
*Administrative Assistant*

**Responsibilities:**  
Assist with Men's Basketball Championships,  
Scheduling, Meetings, Television Special  
Projects & Marketing

**Joined Big 12 Staff:** 1997



**BRAD SIMMONS**  
*Administrative Assistant*

**Responsibilities:**  
Assist with Compliance & Office Operations

**Education:**  
TCU, 2003 [B.A., Radio/TV/Film]

**Joined Big 12 Staff:** 2005



**MICHELLE PETERSON**  
*Receptionist/Administrative Assistant*

**Responsibilities:**  
Switchboard Operations; Administration

**Joined Big 12 Staff:** 2008



**FELICIA MICHAEL**  
*Will Hancock Communications Assistant*

**Responsibilities:**  
Communications & Media Relations

**Education:**  
Texas Tech, 2006  
[B.A., Public Relations & Spanish]  
Texas Tech, 2008  
[M.A., Sports Media Management]

**Joined Big 12 Staff:** 2008



**BONNIE RYAN**  
*Will Hancock Communications Assistant*

**Responsibilities:**  
Communications & Media Relations

**Education:**  
Nebraska, 2008 [B.A., Advertising]

**Joined Big 12 Staff:** 2008



**MELANIE WEISER**  
*Internet Services Assistant*

**Responsibilities:**  
Web Site & Video Support

**Education:**  
Arizona, 2008 [B.A., Communication]

**Joined Big 12 Staff:** 2008

