

LOCATION PLAN
SCALE: 1" = 2000'

FROM U.S.G.S. QUADRANGLE GAULEY BRIDGE, W.V.

GENERAL NOTES

- GENERAL SPECIFICATIONS AS PER A.R.E.A. SPECS.
- LIVE LOAD COOPER E-80 AS PER A.R.E.A. SPECS. WITH DIESEL IMPACT.
- REINFORCING STEEL SHALL BE IN ACCORDANCE WITH R.R. SPECS. C.E. 77, A.S.T.M. SPECS. A-615, GRADE 60.
- STRUCTURAL STEEL AS PER A.S.T.M. SPECS. A-588, EXCEPT AS NOTED, WHICH SHALL CONFORM TO A-36.
- HIGH STRENGTH BOLT, NUT, AND WASHER MATERIAL SHALL CONFORM TO THE REQUIREMENTS OF A.S.T.M. SPECS. A-325, CURRENT ISSUE. INSTALLATION TO BE IN ACCORDANCE WITH A.R.E.A. SPECS. FOR STEEL STRUCTURES. FURNISH HEAVY DUTY HEX NUTS, HIGH STRENGTH BOLTS 7/8" INCH DIA. OPEN HOLES 15/16" INCH DIA., UNLESS OTHERWISE SHOWN. ALL SHOP BOLTS (WHEN REQUIRED) ARE TO BE INCLUDED IN FABRICATION. BOLTS FOR FIELD ERECTION, SHALL BE SUPPLIED BY THE FABRICATOR.
- WELDING TO BE IN ACCORDANCE WITH AMERICAN WELDING SOCIETY STRUCTURAL WELDING CODE D1.1 - 85. ALL WELDS TO BE CONTINUOUS UNLESS OTHERWISE SHOWN. ALL WELDERS TO BE QUALIFIED IN ACCORDANCE WITH A.W.S. STRUCTURAL WELDING CODE OR OTHER REGULATIONS MEETING WITH THE APPROVAL OF THE ENGINEER. ALL FIELD WELDS TO BE MADE WITH E-70XX LOW HYDROGEN ELECTRODE WITH ON-SITE PROTECTION AND USE OF ELECTRODE HEATING UNITS PER CURRENT A.W.S. SPECS.
- PAIN AS PER STEEL STRUCTURES PAINTING COUNCIL.
- ALL STEEL TO BE THOROUGHLY CLEANED AS PER SSPC-SP6 AND SHOP PAINTED WITH ONE (1) COAT OF PLY-MASTIC 101 AS MANUFACTURED BY M.A. BRUDER & SONS, INC., AND COMPLYING WITH THE MANUFACTURER'S MIL THICKNESS REQUIREMENTS. NO PAINT ON CONTACT SURFACES OF STRUCTURALLY BOLTED JOINTS AND ON AREAS WITHIN TWO (2) INCHES OF FIELD WELDS. AFTER ERECTION, ALL UNPAINTED AND DAMAGED PAINT AREAS OF THE STRUCTURAL STEEL SHOULD BE PAINTED. NO SHOP OR FIELD PAINT ON SURFACES OF STEEL DECK PLATES AND SIDE PLATES WHICH ARE TO BE COATED WITH NEOPRENE WATERPROOFING.
- NEOPRENE WATERPROOFING AND ASPHALT SAND PROTECTION AS PER CONRAIL SPECIFICATIONS.
- FILL WILL BE CLEAN GRANULAR MATERIAL. NO GARBAGE, TRASH OR ORGANIC MATERIAL WILL BE PERMITTED.
- FILL TO BE PLACED IN LOOSE 8 INCH LIFTS AND COMPACTED TO 95% OF MAXIMUM DENSITY IN ACCORDANCE WITH CURRENT A.S.T.M. DESIGNATION D1557. (A.A.S.H.T.O. T-180).
- CONCRETE TO BE CLASS 40 AS PER R.R. SPECIFICATION C.E. 77, WITH AN APPROVED AIR ENTRAINING AGENT ADDED AT THE MIXER NOT ENTRAIN NOT LESS THAN 3% NOR MORE THAN 6% AIR. WHERE NEW CONCRETE JOINS OLD MASONRY, ALL LOOSE MATERIALS ARE TO BE CLEANED OFF, THE OLD SURFACES ARE TO BE ROUGHENED, DOWEL HOLES DRILLED AND ALL SURFACES ARE TO BE WETTED FOR AT LEAST FOUR HOURS AND GIVEN A THIN COAT OF 1:2 GROUT MIX PRECEDING THE PLACING OF NEW CONCRETE.
- BACK SURFACES OF ALL NEW CONCRETE SHALL RECEIVE TWO (2) COATS OF AN APPROVED DAMPROOFING MATERIAL AS PER A.R.E.A. SPECS., CHAPTER 29, PART 3. COATING TO BE APPLIED TO WITHIN SIX (6) INCHES FROM TOP.
- ALL FABRICATED STRUCTURAL STEEL MUST BE ASSEMBLED AND MATCH MARKED IN THE SHOP BEFORE SHIPPING.
- MATERIAL ON THIS PLAN IS SUBJECT TO CONRAIL INSPECTION AND TEST BEFORE IT IS PAINTED.
- MILL INSPECTION OF STEEL WILL BE WAIVED PROVIDED THE FABRICATOR FURNISHES CERTIFIED COPIES OF MILL'S REPORT ON PHYSICAL PROPERTIES OF THE STEEL USED. ORIGINAL TRACINGS OR CLEAR REPRODUCTIONS THEREOF ON LINED, MYLAR OR SIMILAR MATERIAL OF ALL SHOP DETAIL DRAWINGS PREPARED FOR THE WORK SHALL BE FORWARDED TO AND REMAIN THE PROPERTY OF CONRAIL. PLANS SHALL BE NOT LARGER THAN 24 INCHES BY 36 INCHES. DRAFTING AND LETTERING TECHNIQUES SHALL BE IN ACCORDANCE WITH THE NATIONAL MICROGRAPHICS ASSOCIATION STANDARDS.
- BEFORE FINAL PAYMENT IS MADE TO THE STEEL FABRICATOR, NOTES NUMBER 17 AND 18 MUST BE COMPLIED WITH. BENCH MARK LOCATION - TOP OF CONCRETE CURB STA 9+25 OFFSET 32 FT WEST - ASSUMED ELEVATION 100.00.

ESTIMATED QUANTITIES

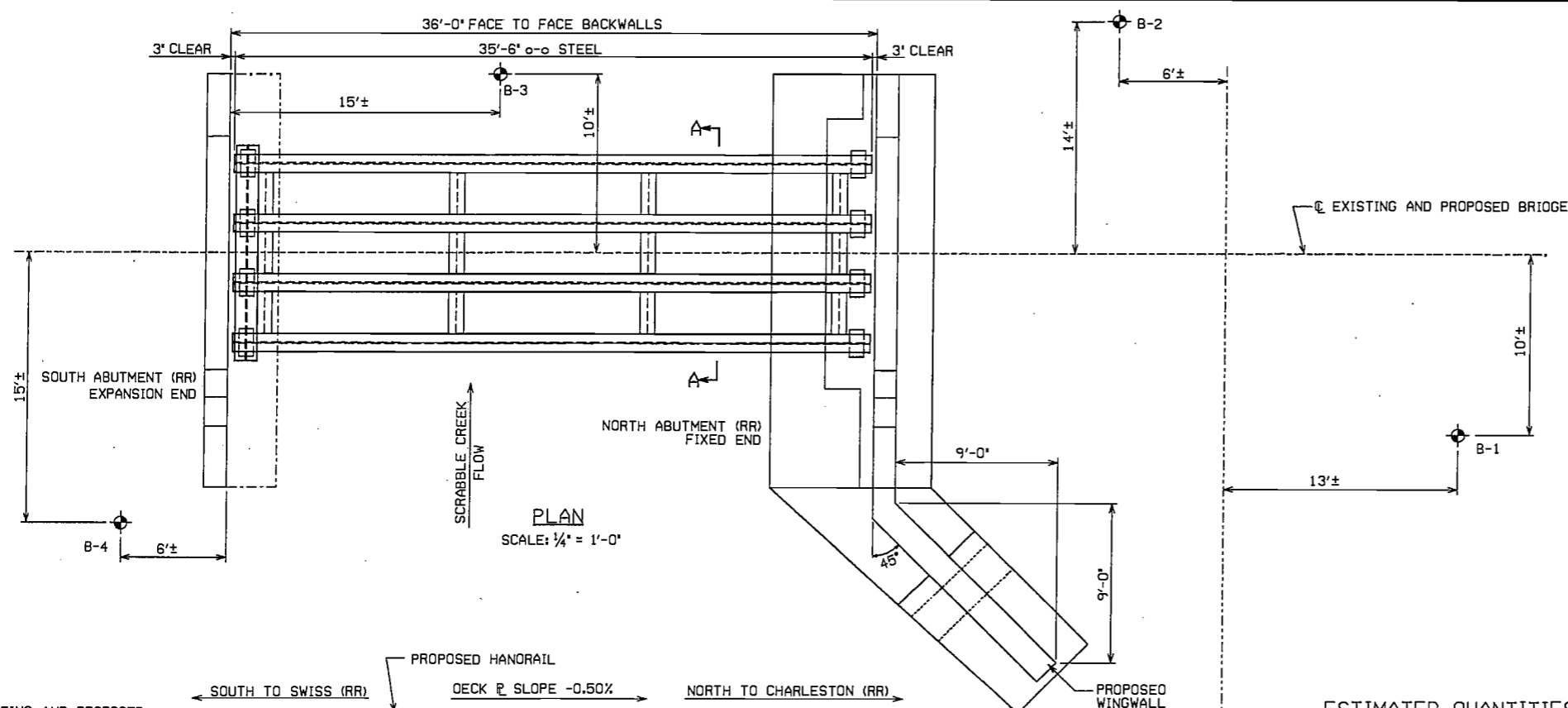
STRUCTURAL STEEL (A-588)	53,000 LB
(A-36)	5400 LB
REINFORCING STEEL	4500 LB
CONCRETE	95 CY
ASPHALT SAND	6 TON
ASPHALT PLANKS	400 SF
FILL	200 CY

CORRECT AS QUOTED
10-26-92

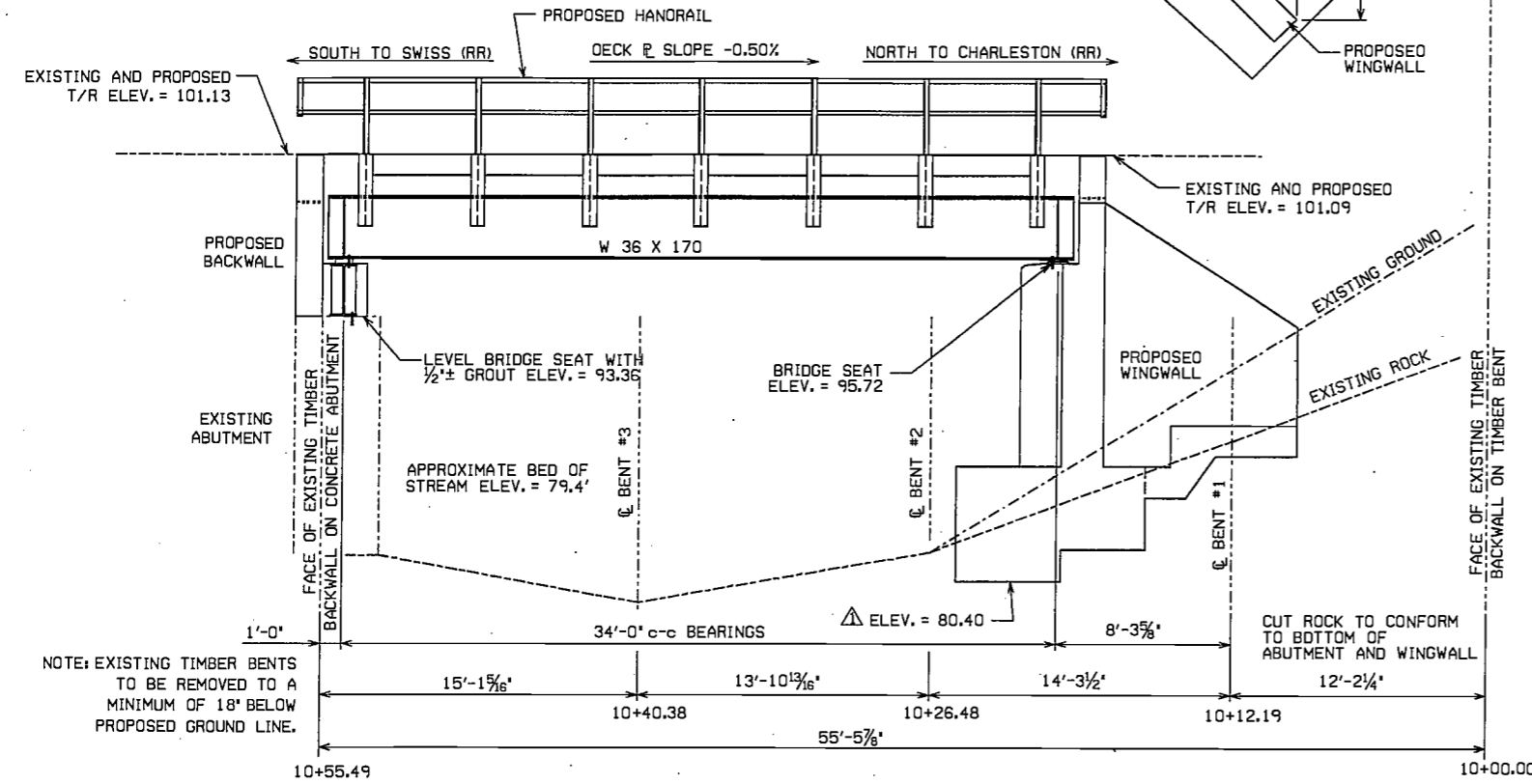
BASE PLATE LEVELING GROUT

DURALCRYL BY DURAL INTERNATIONAL
DEER PARK, N.Y.
(800) 645-5515

WHEN THICKNESS TO BE USED IS LESS THAN 1", DURALCRYL MAY BE USED BY ITSELF. FOR THICKNESSES 1" OR GREATER DURALCRYL SHOULD BE EXTENDED WITH CLEAN, DRY, BAGGED QUARTZ SAND. CONSULT SUPPLIER FOR RECOMMENDED QUANTITY OF SAND WHEN REQUIRED.
SURFACE PREPARATION: CONCRETE MUST BE CLEANED TO REMOVE ANY LOOSE MATERIAL. ALL DUST MUST BE REMOVED, PREFERABLY BY VACUUMING. STEEL SHALL BE UNPAINTED AND CLEANED OF RUST.
INSTALL DURALCRYL AS PER SUPPLIER'S RECOMMENDATIONS. BRIDGE MAY BE LOWERED AND PLACED IN SERVICE AFTER 1 HOUR AT A TEMPERATURE OF 60°F OR HIGHER. AT TEMPERATURES BETWEEN 32°F & 60°F ALLOW 3 HOURS CURE TIME.



PLAN
SCALE: 1/4" = 1'-0"



ELEVATION
SCALE: 1/4" = 1'-0"

A-325 BOLT LIST (SHOP ONLY)

NO.	DIA.	GRIP	LENGTH	DESCRIPTION	REMARKS
84	7/8"	1 1/16"	2 1/4"	W 14 X 48 TO 1/2" P	
96	7/8"	1 1/8"	2 1/2"	W 36 X 170 TO L 5' X 5' X 1/2"	
96	7/8"	1 7/8"	2 3/4"	W 27 X 84 TO 2-L 5' X 5' X 1/2"	
48	7/8"	1 1/16"	3"	W 36 X 170 TO 2-L 5' X 5' X 1/2"	

A-325 BOLT LIST (FIELD ONLY)

NO.	DIA.	GRIP	LENGTH	DESCRIPTION	REMARKS
14	1/2"	7/8"	1 3/4"	1/2" P TO 3/8" P	HANORAIS
48	7/8"	1 7/16"	2 3/4"	W 27 X 84 TO 2-L 5' X 5' X 1/2"	
48	7/8"	1 1/16"	3"	W 36 X 170 TO 2-L 5' X 5' X 1/2"	
8	1 1/8"	5"	6 3/4"	W 36 X 170 TO W 30 X 116	

GRAPHIC SCALE
8
10

PROJECT NORTH

CONRAIL CONSOLIDATED RAIL CORPORATION
PHILA., PA.
CHIEF ENGINEER - DESIGN & CONSTRUCTION
APPROVED: [Signature]
ENR. BRIDGES & BUILDINGS
ASST. CHIEF ENGR. STRUCTURES

NO.	DATE	REMARKS
2-6-87		EXTEND FOOTING

REVISIONS

SEAL:

SIGNATURE

PROJECT TITLE:
CENTRAL REGION COLUMBUS DIVISION
WEST VIRGINIA
SECONDARY TRACK
U.G. BR. 163.49
GAULEY BRIDGE, W.V.
SCRABBLE CREEK
RECONSTRUCTION

DRAWING TITLE:
PLAN & ELEVATION

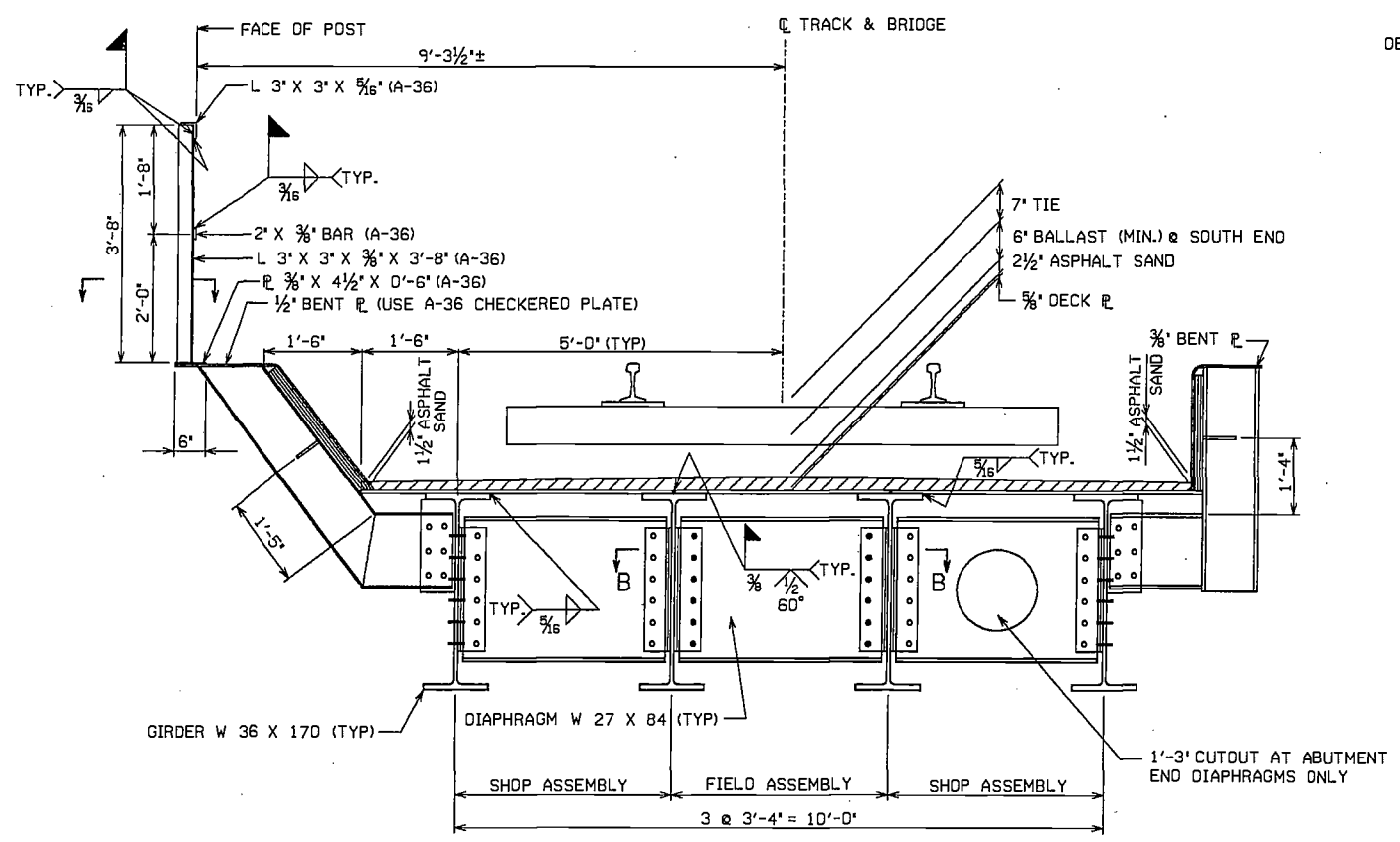
DES: SLS
CK: WKT
DATE: 1-26-87

PLAN NUMBER:
48531

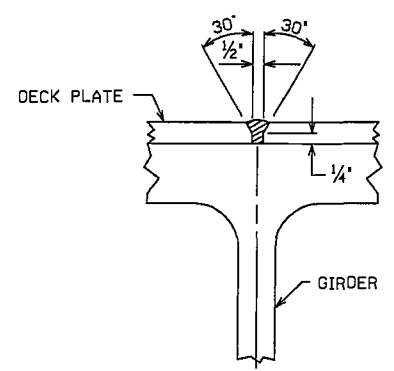
[210,143812416349.DGN]

DRAWING NUMBER:
1 OF 6

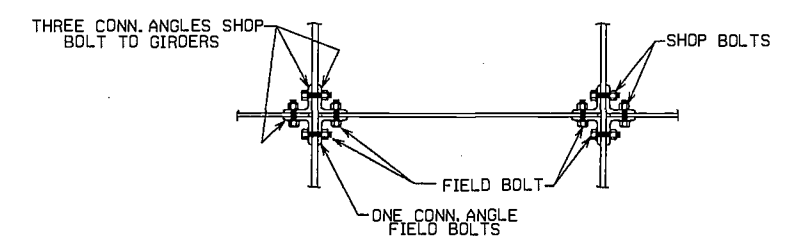
WV-222.49



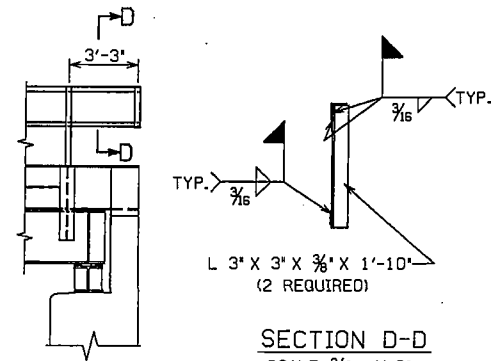
SECTION A-A
SCALE: 3/4" = 1'-0"
LIFTING WEIGHT 35 TONS
(DOES NOT INCLUDE TRACK OR BALLAST)



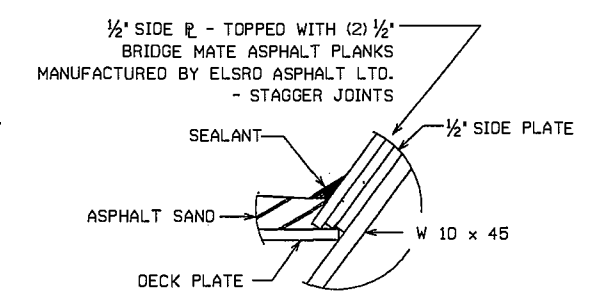
DECK PLATE WELDING DETAIL
SCALE: 6" = 1'-0"
FIELD WELD



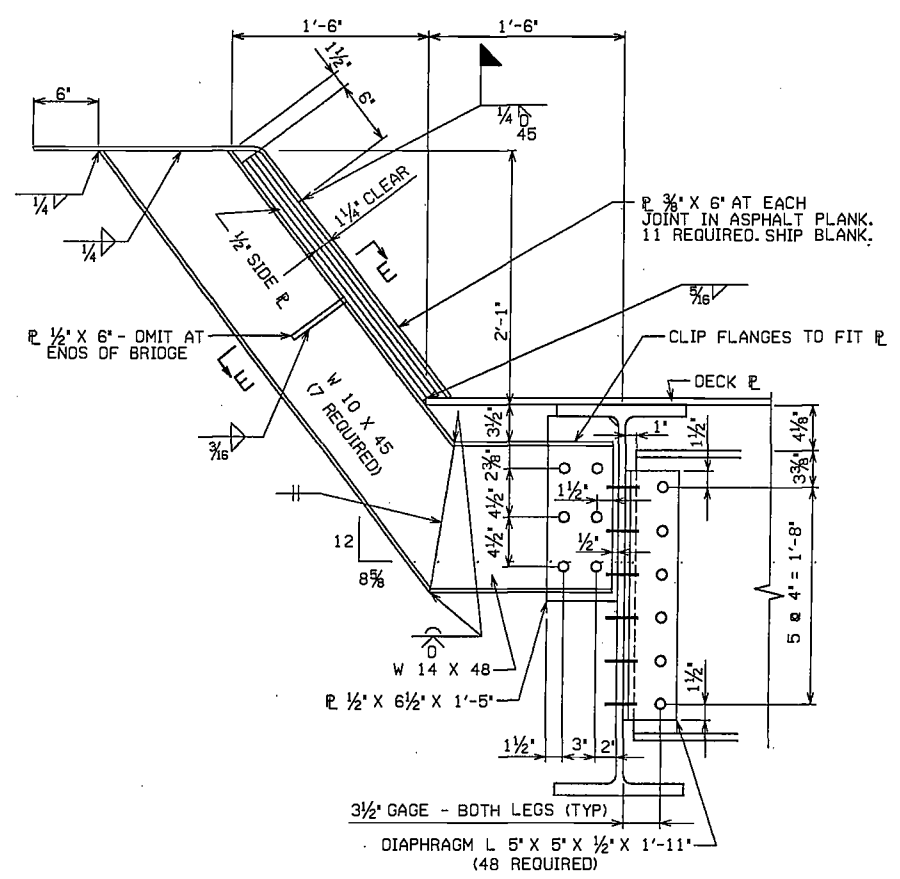
SECTION B-B
(TYPICAL DIAPHRAGM TO GIRDER CONNECTION)
NOT TO SCALE



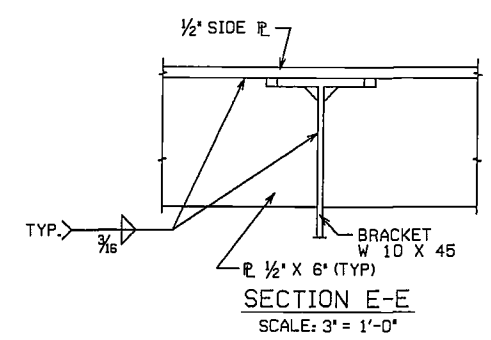
HANDRAIL CLOSURE DETAIL
SCALE: 1/4" = 1'-0"



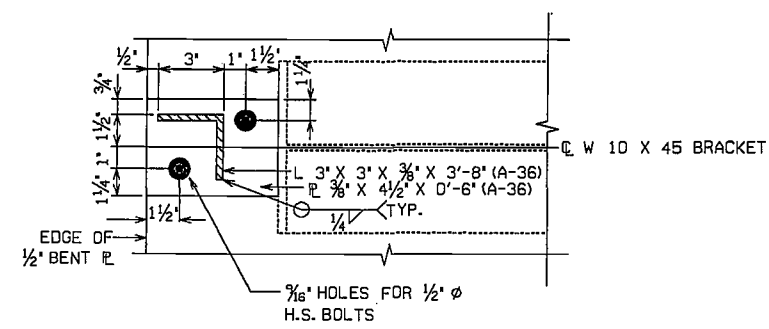
ASPHALT PLANK DETAIL
N.T.S.



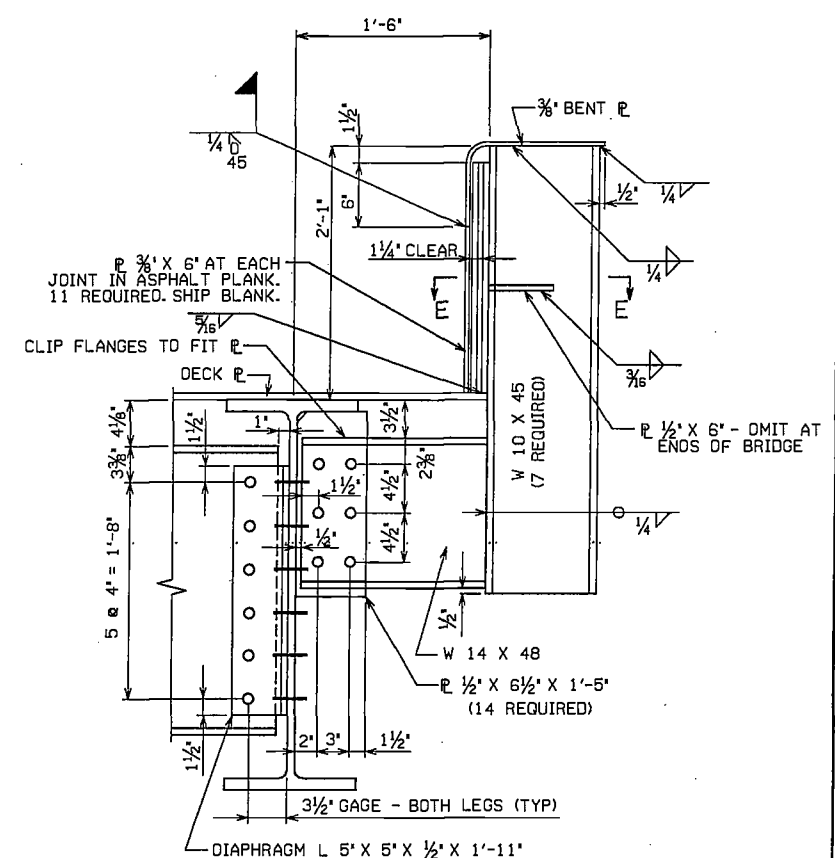
EAST BRACKET DETAIL
SCALE: 1 1/2" = 1'-0"



SECTION E-E
SCALE: 3" = 1'-0"



SECTION C-C
SCALE: 3" = 1'-0"



WEST BRACKET DETAIL
SCALE: 1 1/2" = 1'-0"

GRAPHIC SCALE
8
10

PROJECT NORTH

CONRAIL
CONSOLIDATED RAIL CORPORATION
PHILA., PA.
CHIEF ENGINEER - DESIGN & CONSTRUCTION
ENGR. BRIDGES & BUILDINGS
ASST. CHIEF ENGR. STRUCTURES

NO.	DATE	REMARKS
REVISIONS		

SEAL:

signature

PROJECT TITLE:
CENTRAL REGION
COLUMBUS DIVISION
WEST VIRGINIA
SECONDARY TRACK
U.G. BR. 163.49
GAULEY BRIDGE, W.V.
SCRABBLE CREEK
RECONSTRUCTION

DRAWING TITLE:
STEEL DETAILS

des: SLS dr: SLS
ck: WKT tr:
DATE: 1-26-87

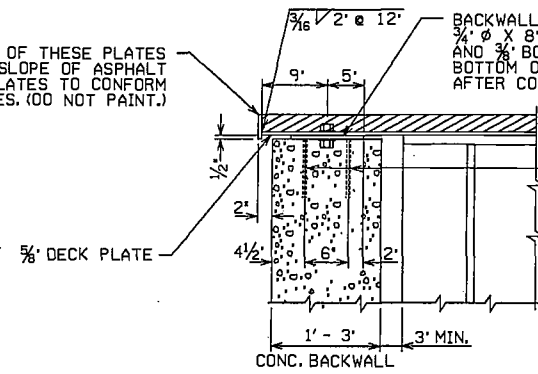
PLAN NUMBER:
48531

[210,143812416349.0GN

DRAWING NUMBER:
2 OF 6

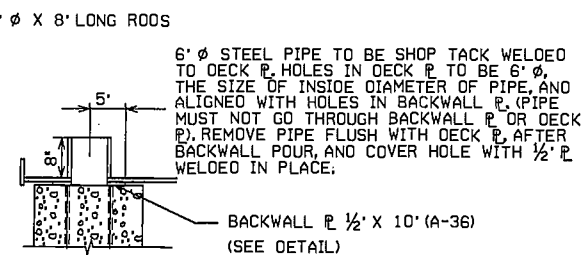
WV-222.49

1/2" END DAM P's (A-36), TOP OF THESE PLATES TO CONFORM WITH SLOPE OF ASPHALT SURFACE, LENGTH OF PLATES TO CONFORM TO WIDTH OF DECK PLATES. (DO NOT PAINT.)

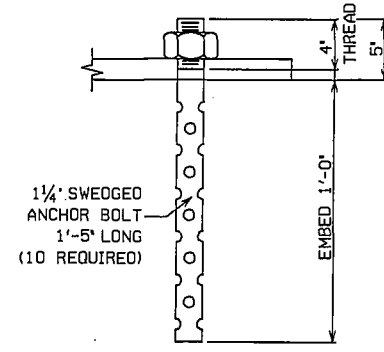


END DAM DETAIL
SCALE: 1" = 1'-0"

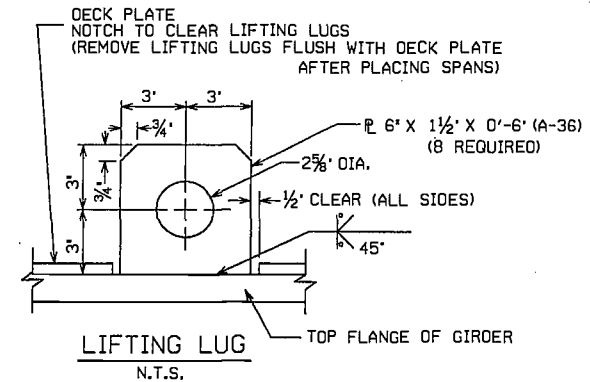
BACKWALL P 1/2" X 10" (SEE DETAIL) WITH 3/4" X 8" LONG RODS WELDED TO PLATE AND 3/8" BOLTS (TACK WELD TO BOTTOM OF PLATE). BOLTS TO BE REMOVED AFTER CONCRETE HAS TAKEN INITIAL SET. (SHOP BOLTED)



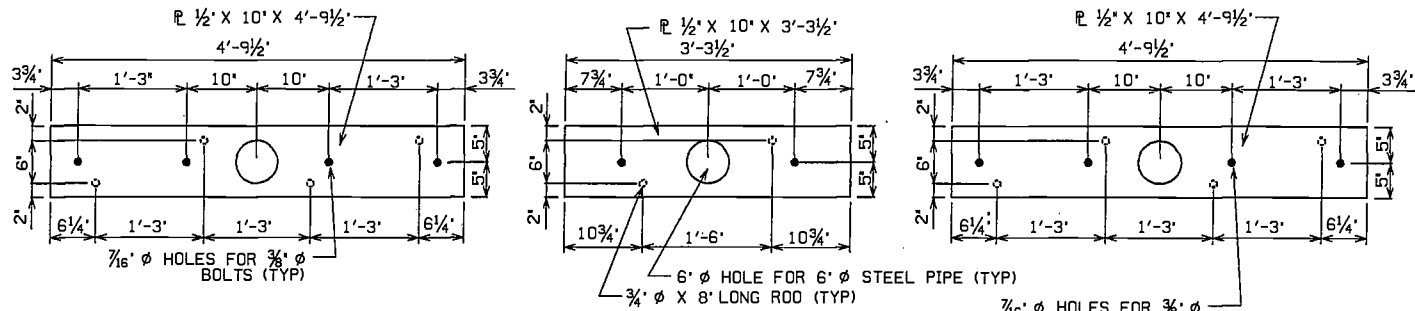
BACKWALL POUR DETAIL
SCALE: 1" = 1'-0"



ANCHOR BOLT DETAIL
SCALE: 3" = 1'-0"

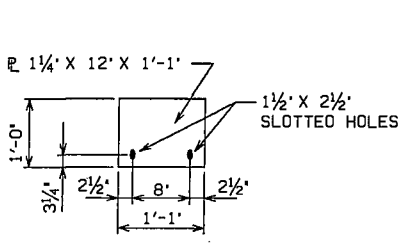
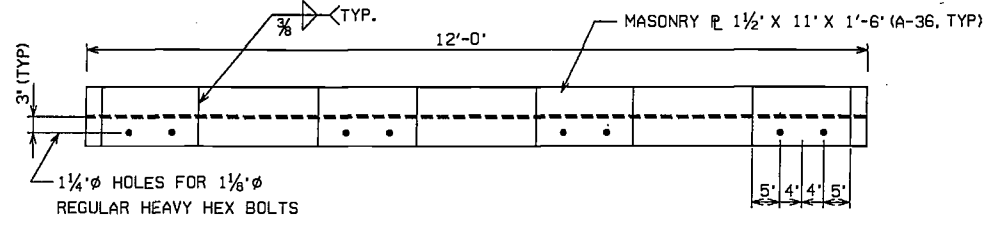


LIFTING LUG
N.T.S.

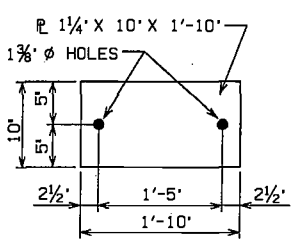


BACKWALL PLATE DETAILS (A-36)
SCALE: 1" = 1'-0"

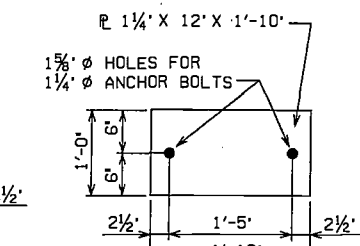
NOTE: BACKWALL PLATES TO BE 1/2" CLEAR OF EACH OTHER.



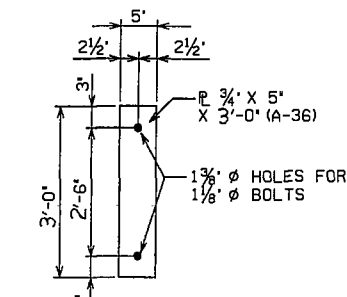
SOLE PLATE DETAILS
SCALE: 1" = 1'-0"



(FIXED END - 4 REQUIRED)

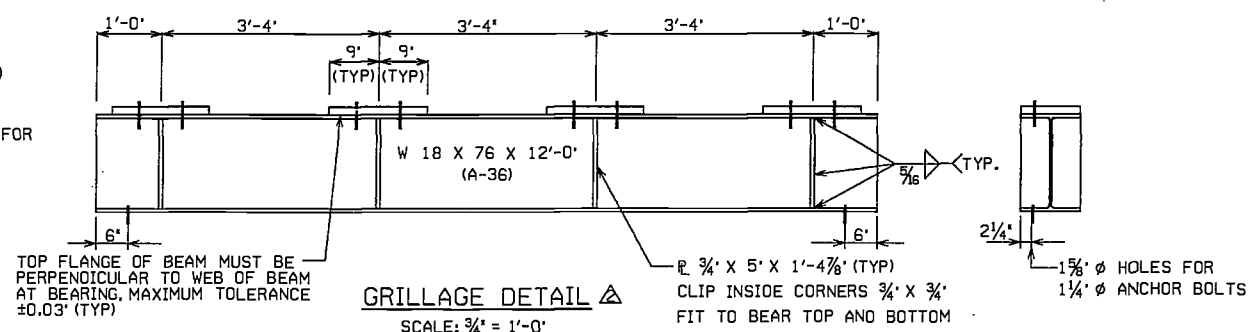


(FIXED END - 4 REQUIRED)



CONNECTION PLATE
SCALE: 1" = 1'-0"

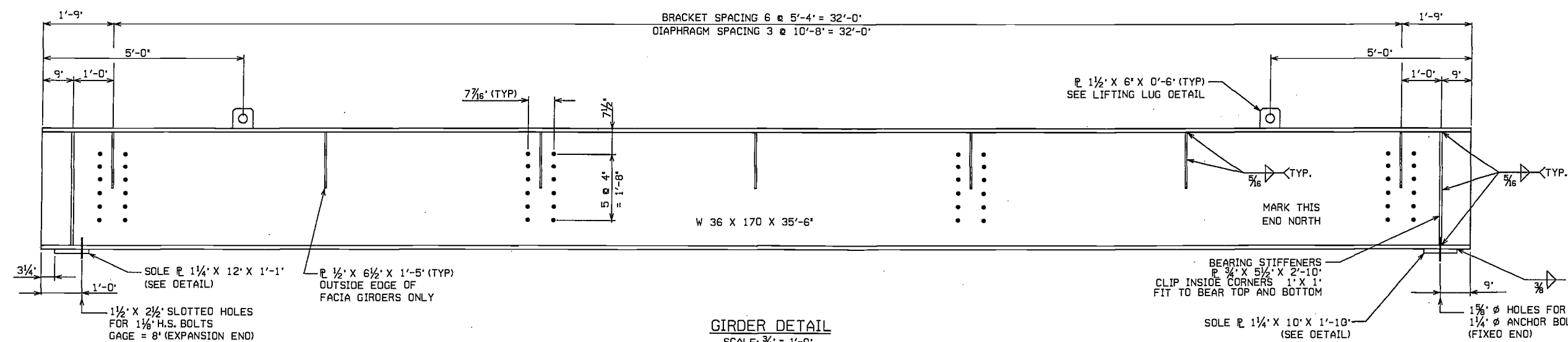
(15 REQUIRED)



GRILLAGE DETAIL
SCALE: 3/4" = 1'-0"

(EXPANSION END)
DO NOT PAINT

CAMBER IN BEAM NOT TO EXCEED 1/32"



GIRDER DETAIL
SCALE: 3/4" = 1'-0"

GRAPHIC SCALE

8	
10	

PROJECT NORTH

CONRAIL
CONSOLIDATED RAIL CORPORATION
DESIGN & CONSTRUCTION
CHIEF ENGINEER - DESIGN & CONSTRUCTION
APPROVED: [Signature]
EST. CHIEF ENGR. STRUCTURES
ENGR. BRIDGES & BUILDINGS

NO.	DATE	REMARKS
3-20-87		SOUTH ABUTMENT
2-6-87		DELETE PAINT

REVISIONS

SEAL:

signature

PROJECT TITLE:
CENTRAL REGION
COLUMBUS DIVISION
WEST VIRGINIA
SECONDARY TRACK
U.G. BR. 163.49
GAULEY BRIDGE, W.V.
SCRABBLE CREEK
RECONSTRUCTION

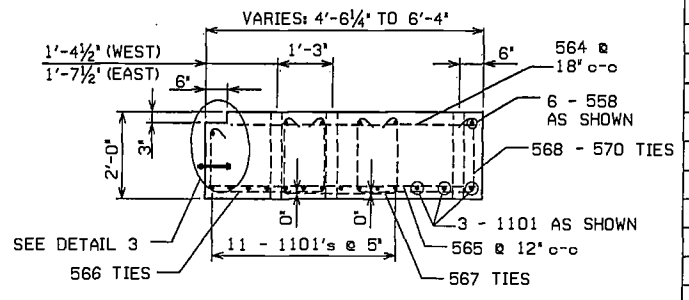
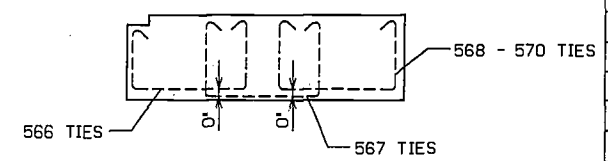
DRAWING TITLE:
**GIRDER & CAP
DETAILS**

des: SLS	dr: SLS
ck: WKT	tr:
DATE: 1-26-87	
PLAN NUMBER: 48531	
[210,14]812416349.06N	
DRAWING NUMBER: 3 OF 6	

WV-222.49

401 TIES @ 12' o-o
LAP 12'
3" CLEAR

9 - 810's
EQUALLY SPACED

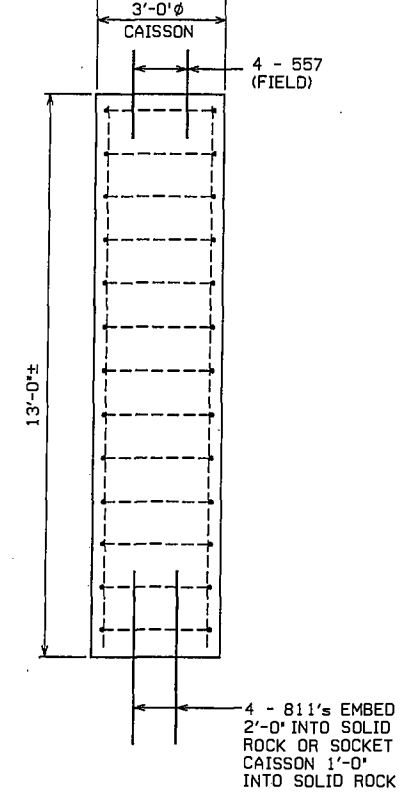


BAR LIST													LOCATION	
MARK	SIZE	LENGTH	QTY.	TYPE	A	B	C	D	E	F	G			
401	4	8'-10"	13	G	2'-6"	1'-0"							CAISSON TIES	
810	8	12'-8"	9	STR									CAISSON VERTICAL	
811	8	4'-0"	8	STR									CAISSON DOWELS	
558	5	21'-6"	6	STR									PRECAST CAP TOP - HORIZONTAL	
564		3'-9"-5'-6"	22	STR									PRECAST CAP INCREMENT 1' EACH	
565		4'-3"-6'-0"	15	STR									PRECAST CAP INCREMENT 1 1/2' EACH	
566		6'-11"	32	F	1'-6"	2'-9"	1'-9"	5 1/2"	3 3/4"				PRECAST CAP TIES	
567		7'-2"	32	F	1'-9"	2'-9"	1'-9"	5 1/2"	3 3/4"				PRECAST CAP TIES	
568		5'-0"-5'-8"	9	F	1'-9"	7'-1'-3"	1'-9"	5 1/2"	3 3/4"				PRECAST CAP INCREMENT 'B' LEG 1' EACH	
569		5'-8"	5	F	1'-9"	1'-3"	1'-9"	5 1/2"	3 3/4"				PRECAST CAP TIES	
570		6'-10"-6'-5"	9	F	1'-9"	1'-5"-2'-1"	1'-9"	5 1/2"	3 3/4"				PRECAST CAP INCREMENT 'B' LEG 1' EACH	
1101	11	21'-6"	14	STR									PRECAST CAP BOTTOM - HORIZONTAL	

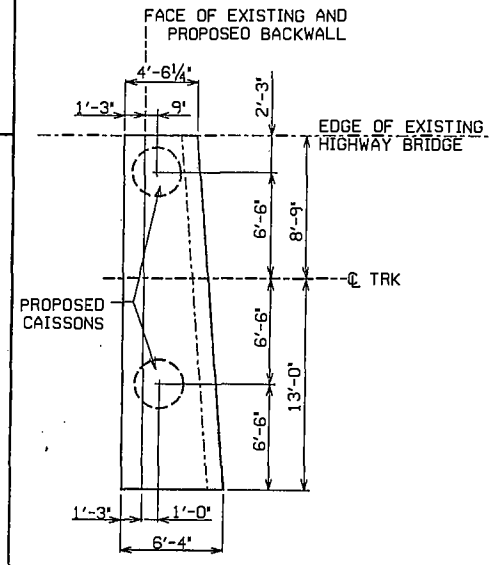
GRAPHIC SCALE
8' |-----|
10' |-----|

PROJECT NORTH

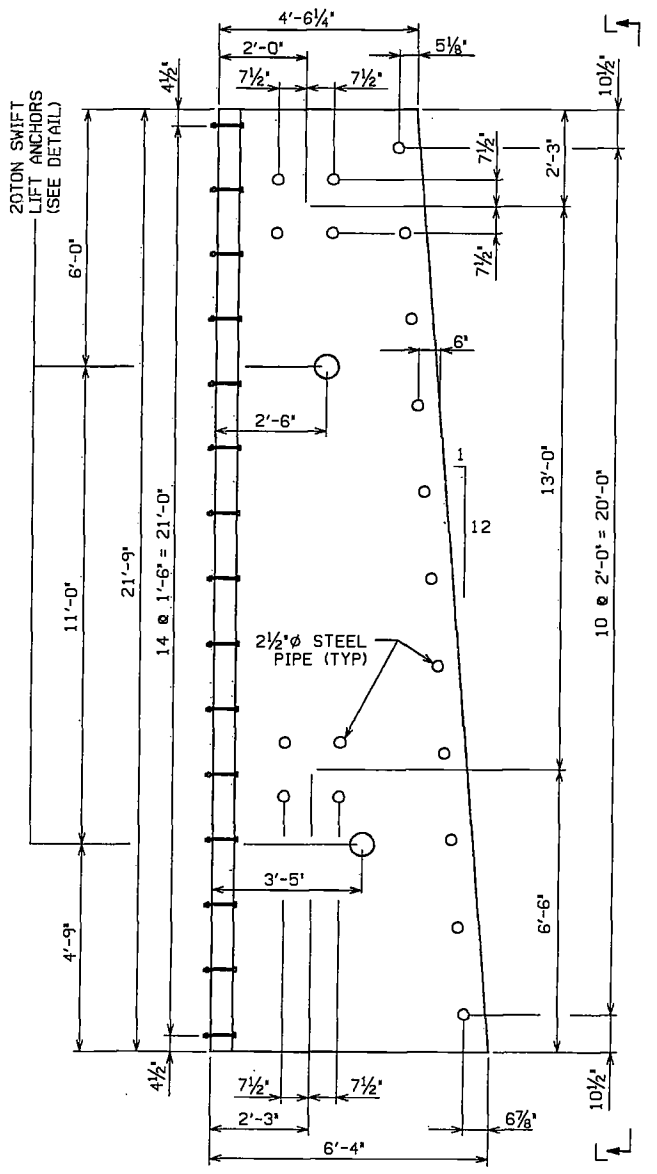
CONRAIL
CONSOLIDATED RAIL CORPORATION
CHIEF ENGINEER - DESIGN & CONSTRUCTION
APPROVED: [Signature]
ENGR. BRIDGES & BUILDINGS



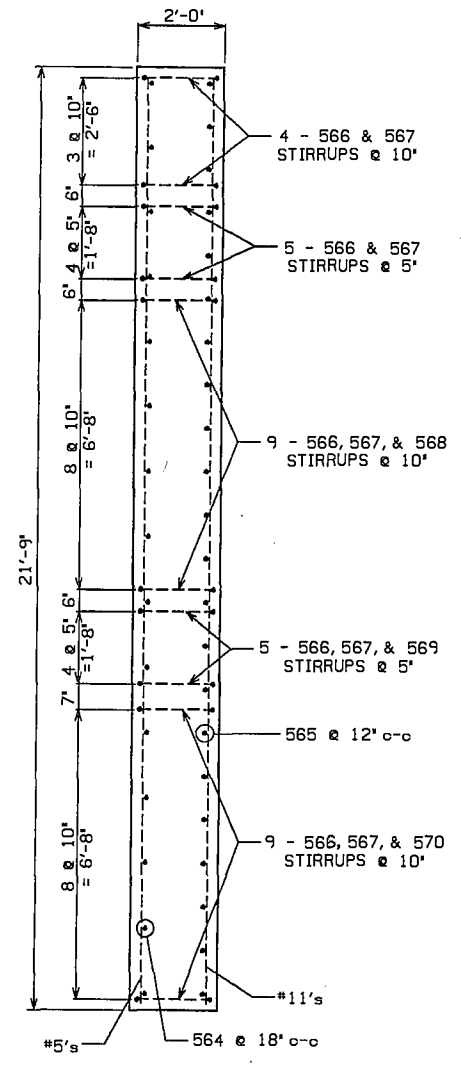
CAISSON DETAIL
SCALE: 1/2" = 1'-0"



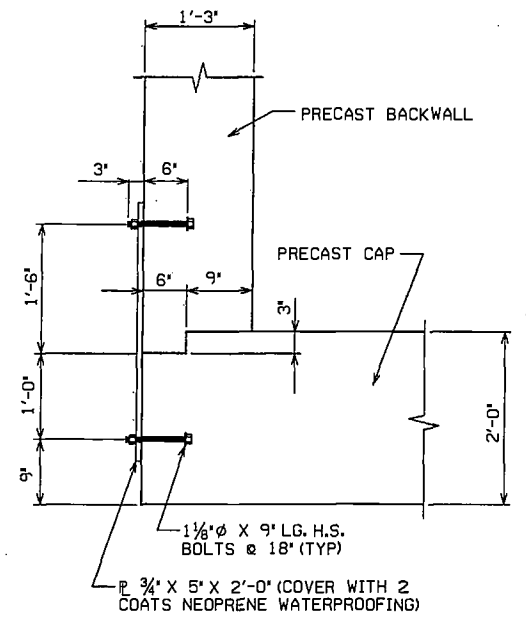
CAISSON LOCATION
SCALE: 3/4" = 1'-0"



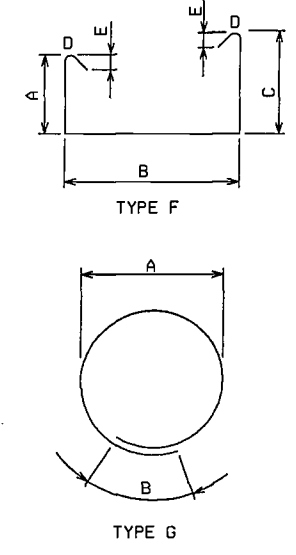
PRECAST CAP
SCALE: 1/2" = 1'-0"
NOTE: PRECAST CONCRETE TO BE GRADE 50
ALL STIRRUPS TO BE 1 1/2" CLEAR



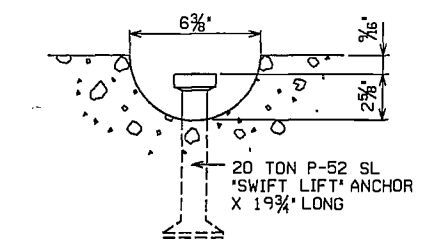
SECTION L-L
SCALE: 1/2" = 1'-0"



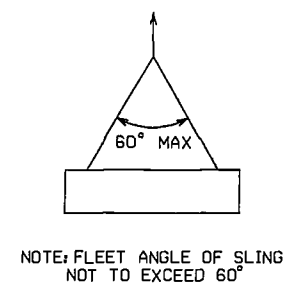
NOTE: SPACING OF BOLTS IN BACKWALL MUST MATCH SPACING OF BOLTS IN CAP.
DETAIL 3
SCALE: 1" = 1'-0"



BENT BAR DETAILS



SWIFT LIFT ANCHOR DETAIL
N.T.S.
LIFTING ANCHOR TO BE DAYTON SUPERIOR OR EQUAL!
DAYTON SUPERIOR CORP.
721 RICHARD ST.
MIAMISBURG, OH. 45432
TELEPHONE (513) 866-0711
TELEX 288274



NOTE: FLEET ANGLE OF SLING NOT TO EXCEED 60°

REVISIONS

NO.	DATE	REMARKS
3-20-87		NEW SHEET

SEAL:

PROJECT TITLE:
CENTRAL REGION COLUMBUS DIVISION
WEST VIRGINIA
SECONDARY TRACK
U.G. BR. 163.49
GAULEY BRIDGE, W.V.
SCRABBLE CREEK
RECONSTRUCTION

DRAWING TITLE:
CAISSON DETAILS

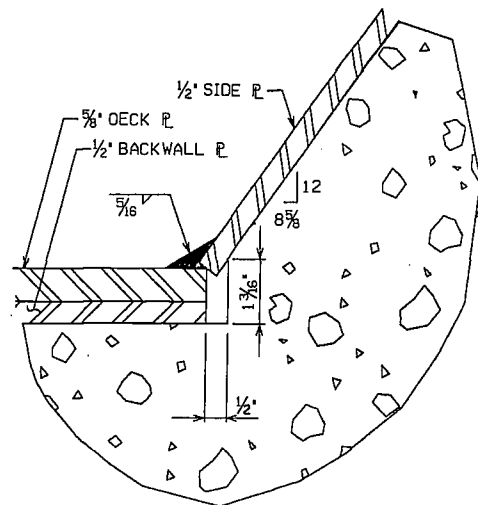
des: SLS dr: SLS
ckt: WKT tr:
DATE: 1-26-87

PLAN NUMBER:
48531

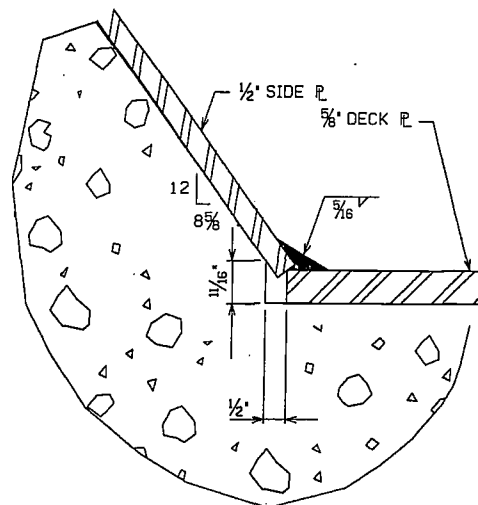
[210,14]812416349.DGN

DRAWING NUMBER:
4A OF 6

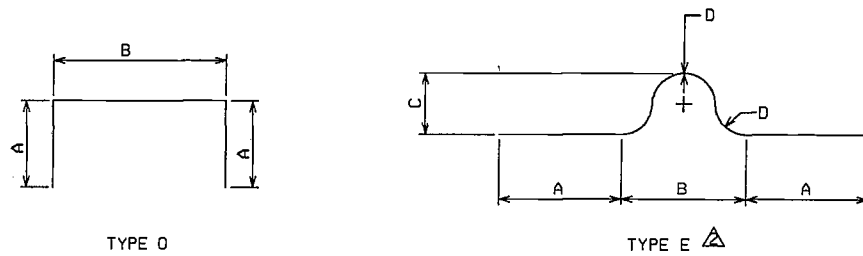
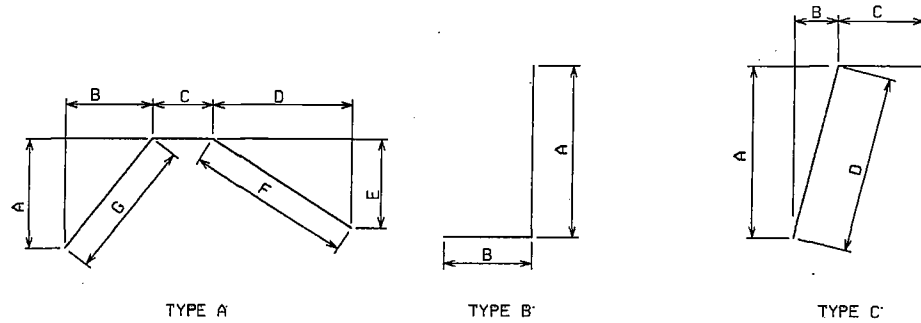
WV-222.49



DETAIL 1
SCALE: 6" = 1'-0"



DETAIL 2
SCALE: 6" = 1'-0"



BENT BAR DETAILS

BAR LIST

MARK	SIZE	LENGTH	QTY.	TYPE	A	B	C	D	E	F	G	LOCATION
501	5	6'-1"	5	STR								NORTH ABUTMENT BACKWALL
502		4'-1"	10	STR								NORTH ABUTMENT BACKWALL
503		4'-11"	1	STR								NORTH ABUTMENT BACKWALL
504		3'-2"	20	STR								NORTH ABUTMENT BACKWALL & FOOTING
505		5'-3"	2	STR								NORTH ABUTMENT BACKWALL
506		7'-9 1/8"	1	A	3'-3 3/4"	2'-2 1/8"	1'-5 1/8"	1'-5 1/4"	1'-10 3/4"	2'-4 1/2"	3'-11 1/2"	NORTH ABUTMENT BACKWALL
507		7'-0"	16	B	4'-6"	2'-6"						NORTH ABUTMENT FOOTING
508		9'-6"	4	STR								NORTH ABUTMENT FRONT FACE
509		5'-0"	8	STR								NORTH ABUTMENT FRONT FACE
510		22'-8"	17	STR								NORTH ABUTMENT BACK FACE & FOOTING
511		13'-0"	12	B	9'-6"	3'-6"						NORTH ABUTMENT FRONT FACE
512		8'-6"	16	STR								NORTH ABUTMENT FOOTING - TOP BAR
513		22'-0"	6	O	2'-6"	17'-0"						NORTH ABUTMENT FRONT FACE
543		17'-0"	3	STR								NORTH ABUTMENT BACKWALL
544		5'-3 3/8"	1	A	1'-3 1/4"	10'	1'-5 1/8"	1'-5 1/4"	1'-10 3/4"	2'-4 1/2"	1'-6 1/4"	NORTH ABUTMENT BACKWALL
809	8	14'-8"	5	STR								NORTH ABUTMENT BACK FACE
810		12'-8"	10	STR								NORTH ABUTMENT BACK FACE
811		13'-6"	1	STR								NORTH ABUTMENT BACK FACE
812		15'-1"	16	B	8'-6"	6'-7"						NORTH ABUTMENT FOOTING - LONG LEG UP
514	5	11'-2"-12'-6"	3	STR								WINGWALL INCREMENT 8' EACH
516		4'-6"-7'-10"	6	STR								WINGWALL INCREMENT 8' EACH
517		5'-0"-11'-8"	3	C	1'-7"	1'-7"	2'-9"-9'-5"	2'-3"				WINGWALL INCREMENT 3'-4' EACH
518		5'-7"-12'-3"	3	C	2'-0"	2'-0"	2'-9"-9'-5"	2'-10"				WINGWALL INCREMENT 3'-4' EACH
520		5'-3"	10	STR								WINGWALL FOOTING - TOP BAR
521		6'-0"-11'-0"	4	STR								WINGWALL INCREMENT 1'-10' EACH
522		8'-8"	8	STR								WINGWALL FOOTING - TOP & BOTTOM
523		8'-7"-15'-1"	4	C	3'-0"	3'-0"	10'-10"-5'-4"	4'-3"				WINGWALL INCREMENT LONG LEG 1'-10'
524		3'-0"	4	STR								WINGWALL DOWEL WINGWALL TO ABUTMENT
525		4'-0"	4	STR								WINGWALL DOWEL WINGWALL TO ABUTMENT
526		5'-0"	2	STR								WINGWALL DOWEL WINGWALL TO ABUTMENT
527		13'-10"	2	STR								WINGWALL TOP OF THE WALL
528		14'-11"	4	C	1'-7"	1'-7"	12'-8"	2'-3"				WINGWALL FRONT FACE - HORIZONTAL
529		15'-6"	4	C	2'-0"	2'-0"	12'-8"	2'-10"				WINGWALL BACK FACE - HORIZONTAL
530		6'-4"	1	C	1'-7"	1'-7"	4'-1"	2'-3"				WINGWALL FRONT FACE - HORIZONTAL
540		6'-11"	1	C	2'-0"	2'-0"	4'-1"	2'-10"				WINGWALL BACK FACE - HORIZONTAL
541		9'-0"	4	B	5'-0"	4'-0"						WINGWALL FOOTING
542		11'-6"	1	B	6'-6"	5'-0"						WINGWALL FOOTING
805	8	11'-2"-12'-6"	3	STR								WINGWALL INCREMENT 'A' LEG 8' EACH
807		4'-6"-7'-10"	6	STR								WINGWALL INCREMENT 'A' LEG 8' EACH
808		8'-0"	9	B	5'-0"	3'-0"						WINGWALL FOOTING
550	5	4'-7"	10	STR								PRECAST SOUTH BACKWALL BACK FACE - VERTICAL
551		5'-7"	1	STR								PRECAST SOUTH BACKWALL BACK FACE - VERTICAL
552		6'-7"	4	STR								PRECAST SOUTH BACKWALL BACK FACE - VERTICAL
553		4'-10"	10	STR								PRECAST SOUTH BACKWALL FRONT FACE - VERTICAL
554		5'-10"	1	STR								PRECAST SOUTH BACKWALL FRONT FACE - VERTICAL
555		6'-10"	4	STR								PRECAST SOUTH BACKWALL FRONT FACE - VERTICAL
556		7'-9 1/8"	2	A	3'-3 3/4"	2'-2 1/8"	1'-5 1/8"	1'-5 1/4"	1'-10 3/4"	2'-4 1/2"	3'-11 1/2"	PRECAST SOUTH BACKWALL BOTH FACES - HORIZONTAL
557		4'-2"	2	STR								PRECAST SOUTH BACKWALL BOTH FACES - HORIZONTAL
558		21'-6"	8	STR								PRECAST SOUTH BACKWALL BOTH FACES - HORIZONTAL
559		1'-10"	4	STR								PRECAST SOUTH BACKWALL BOTH FACES - HORIZONTAL
560		3'-0 1/2"	2	E	1'-0"	10'	3 3/4"	2 1/4"				PRECAST SOUTH BACKWALL SHEAR BAR FOR ANCHOR
557	5	4'-2"	8	STR								SOUTH ABUTMENT DOWEL INTO CAP AND CAISSON
561		2'-10"	11	STR								SOUTH ABUTMENT DOWEL INTO EXISTING WALL
562		1'-8"	10	STR								SOUTH ABUTMENT TOP & BOTTOM - HORIZONTAL
563		24'-3"	2	O	1'-6"	21'-3"						SOUTH ABUTMENT AROUND GRILLAGE

GRAPHIC SCALE
8
10

PROJECT NORTH

CONRAIL
CONSOLIDATED RAIL CORPORATION
PHILA., PA.
CHIEF ENGINEER - DESIGN & CONSTRUCTION
approved: *[Signature]*
ASST. CHIEF ENGR. STRUCTURES
ENGR. BRIDGES & BUILDINGS

3-20-87 SOUTH ABUTMENT
NO. DATE REMARKS

REVISIONS

SEAL:

signature

PROJECT TITLE:
CENTRAL REGION COLUMBUS DIVISION
WEST VIRGINIA
SECONDARY TRACK
U.G. BR. 163.49
GAULEY BRIDGE, W.V.
SCRABBLE CREEK
RECONSTRUCTION

DRAWING TITLE:
BAR LIST & DETAILS

des: SLS dr: SLS
chk: WKT tr:

DATE: 1-26-87

PLAN NUMBER:
48531

[210,14J812416349.DGN

DRAWING NUMBER:
5 OF 6

WV-222.49

