

Chess Improvement Newsletter

Issue : CIN-01

Friday, 30 September 2016

Training Program

Welcome to the first issue of the Chess Improvement Newsletter. This newsletter is a way for me to document my chess improvement journey.

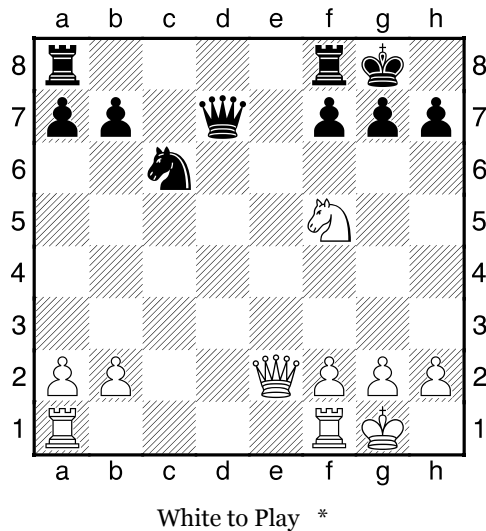
The puzzles will consist of:

- Tactics puzzles
- Positional Puzzles
- Endgame Studies
- Endgame Practical Puzzles

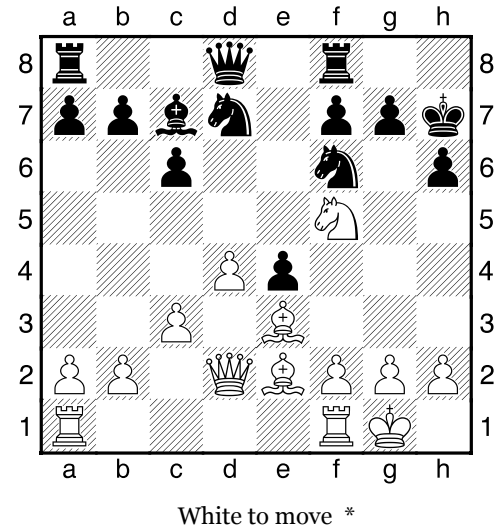
Answers to the puzzles will be in the answer section found at the end of the newsletter.

Tactics Trainer

1.1



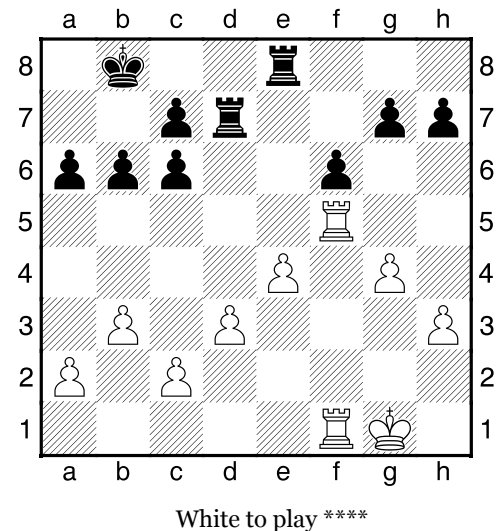
1.2



Positional Trainer

The following positions are of a positional nature. Take your time, to evaluate the position and then find the best plan and move.

1.3



Chess Improvement Newsletter

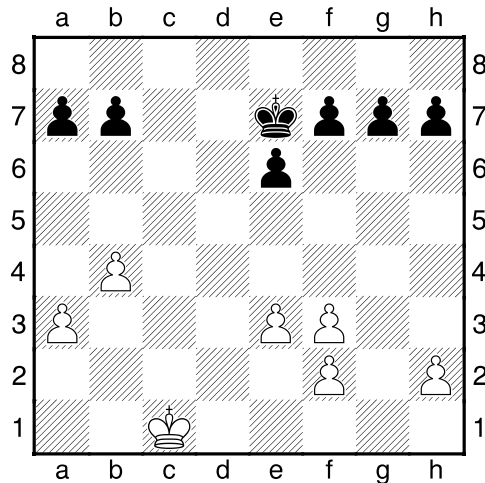
Issue : CIN-01

Friday, 30 September 2016

Endgame Trainer

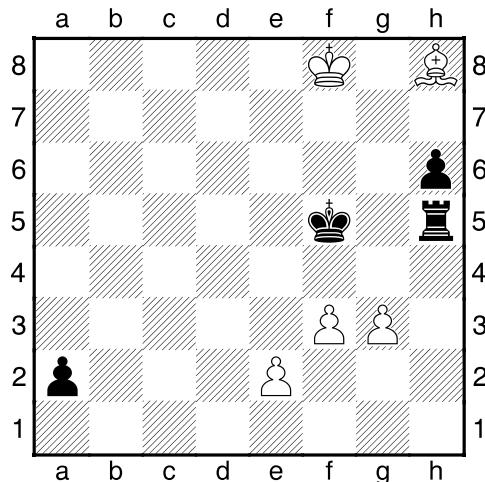
The following are either classic endgame studies to aid in visualization skills or practical endgame positions.

1.4



Black to Play **

1.5



White to play *****

Answers

1.1 Pattern with ♖f5 / ♗g4

1.Qg4! [A double attack. White threatens the immediate checkmate via ♗xg7. Black must defend the mate, but leaves himself open to the discovered attack on the Queen.] **1...g6**
2.Nh6+ Kg7 **3.Qxd7 1-0**

1.2 Pattern with ♖f5

1.Bxh6 [With a knight on f5, the possibility of a bishop sacrifice on h6 is frequently present.] **1...gxh6** **2.Qxh6+ Kg8** **3.Qg7#**

1.3 Restrain, Blockade, Destroy

White stands better here. White has doubled black pawns, and white has the better center. The plan is to carry out a minority attack on the kingside. This will lead to having either a weak f6 pawn or giving white a central passed pawn on e4. But first you need to deprive black of his counterplay on the queenside. Counterplay is eliminated by playing.

1.b4! [Restricting the doubled black pawns.]

1...Kb7 **2.Kf2 b5** **3.a4 Rd4** **4.Rb1 Re5**
5.Ke3 Rd7 **6.a5 Re6** **7.Rbf1 Rde7** **8.g5**
fxg5 **9.Rxg5 Rh6** **10.Rg3 Rhe6** **11.h4 g6**
12.Rg5 h6 **13.Rg4 Rg7** **14.d4 Kc8**
15.Rf8+ Kb7 **16.e5 g5** **17.Ke4 Ree7**
18.hxg5 hxg5 **19.Rf5 Kc8** **20.Rgxg5**
Rh7 **21.Rh5 Kd7** **22.Rxh7 Rxh7** **23.Rf8**
Rh4+ **24.Kd3 Rh3+** **25.Kd2 c5** **26.bxc5**
Ra3 **27.d5** [1-0 (54) Capablanca,J-
 Janowski,D New York 1913]

Chess Improvement Newsletter

Issue : CIN-01

Friday, 30 September 2016

1.4 Attack the weak pawn

1...Kf6!! [The plan in this position is to attack the isolated h-pawn and thereby force the white king to g1. After that some pawns are played forward for exchange so that the black king can then head to the queenside.]

2.Kd2 Kg5 3.Ke2 Kh4 4.Kf1 Kh3 5.Kg1 [The first part of the plan has been carried out.] **5...e5** [Black restrains the doubled white pawns.] **6.Kh1** [6.e4? g5 7.Kh1 h5 8.Kg1 h4] **6...b5 7.Kg1 f5 8.Kh1 g5 9.Kg1 h5 10.Kh1 g4 11.e4 fxe4 12.fxe4 h4 13.Kg1 g3 14.hxg3 hxg3** [0-1 (38) Cohn,E-Rubinstein,A St Petersburg 1909]

1.5 Afansiev, Suizov 1967

1.Kf7! [Now the threat of g4+ is dangerous.]

[1.g4+ The obvious move, but it only leads to a stalemate. 1...Kg6 2.gxh5+ Kh7 3.Bc3 a1Q 4.Bxa1 Draw by stalemate.]

1...Rh1 2.e4+ Kg5 3.Bf6+ Kh5 4.g4# 1-0

Reference

How to Beat your Dad at Chess 22-23

Larsen's Best Move Guide Find the Plan section 1-2

200 Brilliant Endgames Irving Chernev 1