

DESIGN

EUREKA - 3106



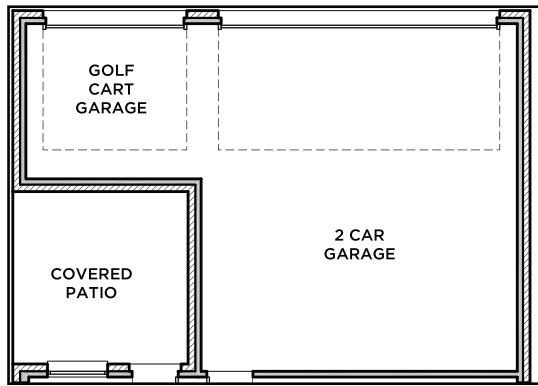
E



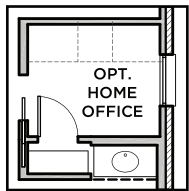
F



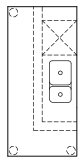
All Product including Architectural Designs, ©2000-2020, Shaddock Homes, LTD., All rights reserved. There may be existing or future design changes made in the floorplans, building products, methods, square footage or designs used in our homes that are not reflected in our information, sales center or in our models. The materials, designs, square footages, features and amenities shown are based upon current development plans, which are subject to change without notice. No guarantee is made that the designs, square footages, materials, features and amenities depicted by artist's renderings or otherwise described will be built, or if built, will be of the same type, size or nature as depicted or described. All cedar, stone and metal roofs are optional and available via change order. Prices and terms subject to change without notice. **REVISION DATE: 2.27.2020**



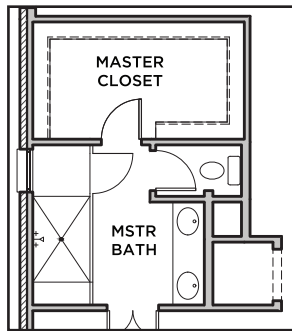
OPT GOLFCART GARAGE



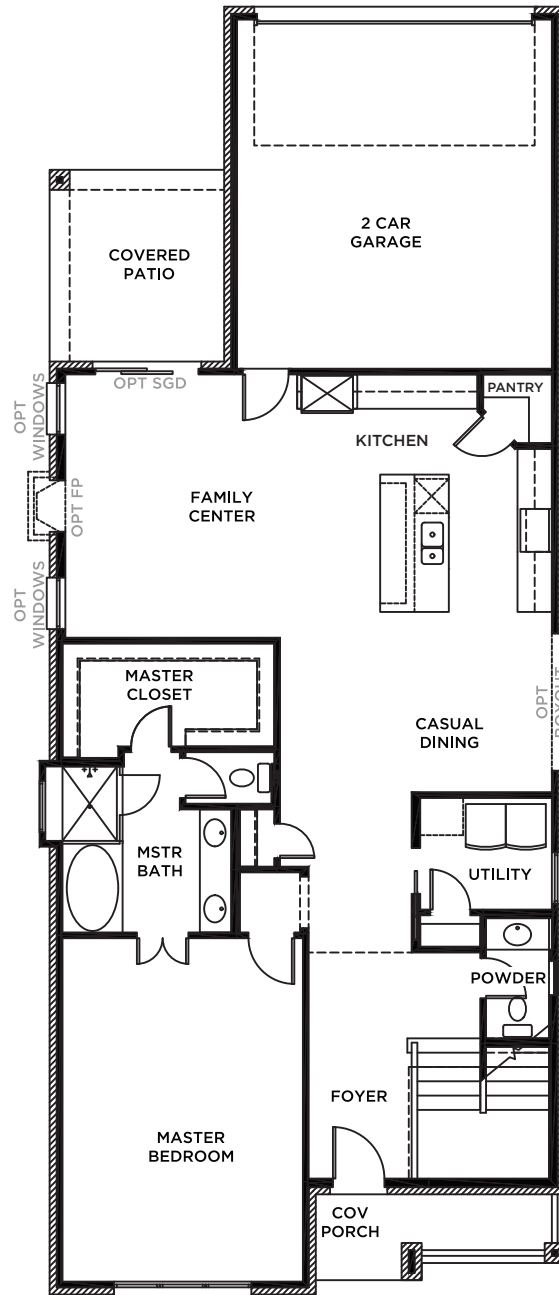
OPTIONAL HOME OFFICE



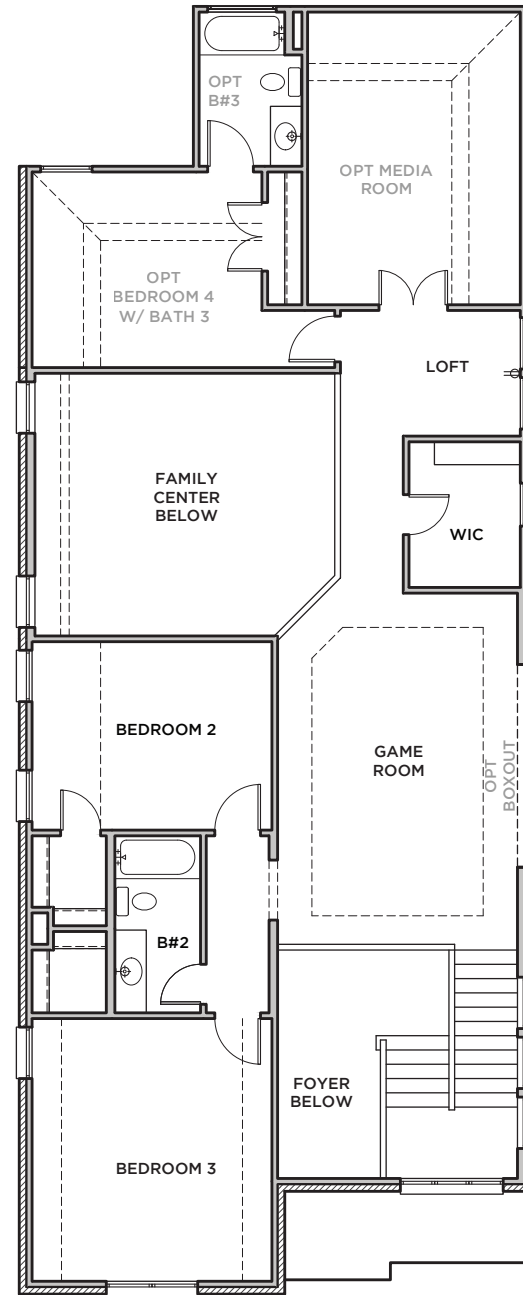
OPTIONAL ISLAND



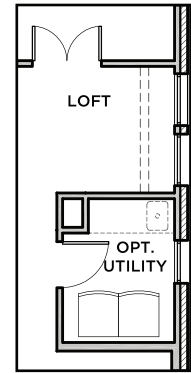
OPT LUXURY SHOWER



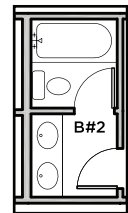
FIRST FLOOR



SECOND FLOOR



OPT. UTILITY
ADVISE THIS OPTION GOES WITH
DOWNSTAIRS HOME OFFICE OPTION



OPT. B#2

**EUREKA
3106** (2.27.20)

	S.FT
First Floor	1539
Second Floor	1048
Total Living Area	2587
2 Car Garage	415
Covered Patio	114
Covered Porch	67
Total Area	3183

Options

Media Room	237
Golf Cart Garage	107
Junior Master	539
Bed 4/Bath 3	277

SHADDOCK HOMES