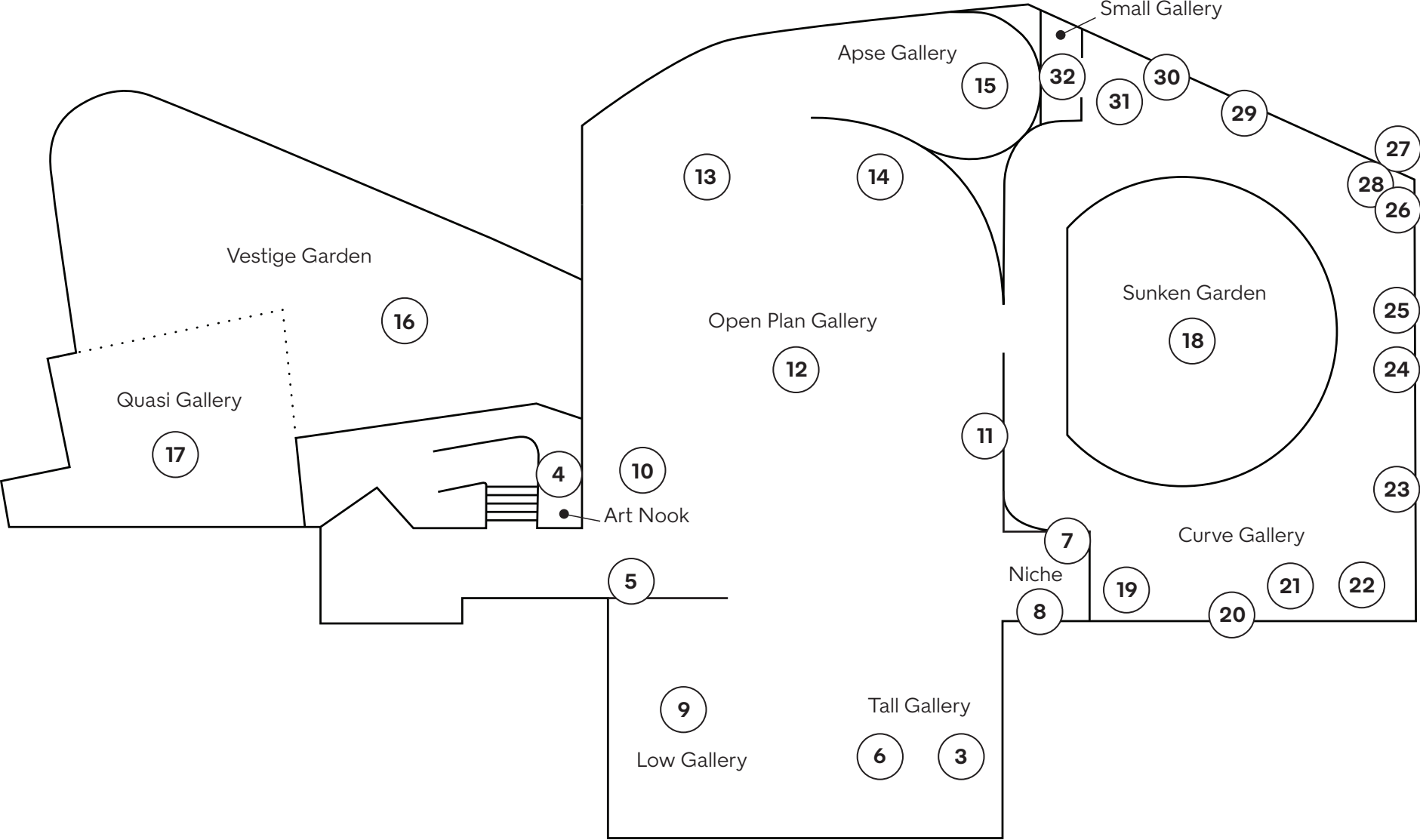
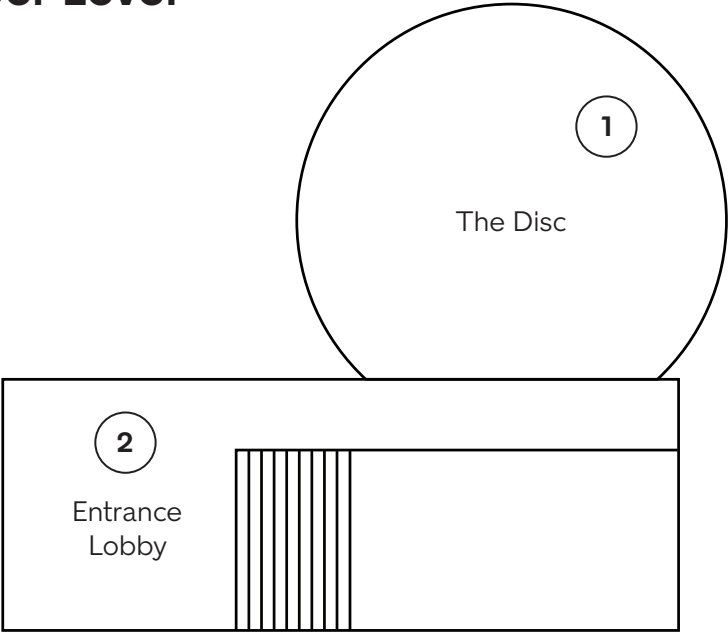


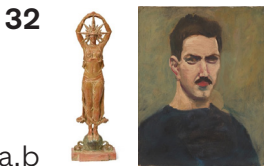
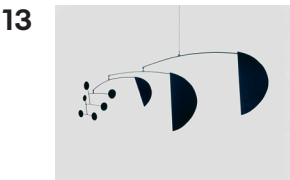
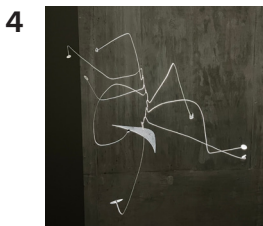
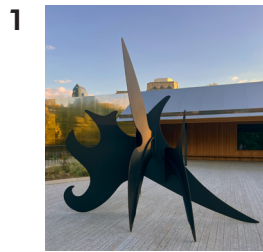
Artwork On View

Lower Level



Upper Level





1. **The Cock's Comb, 1960**

Sheet metal, bolts, and paint. Whitney Museum of American Art, New York; Purchase, with funds from the Friends of the Whitney Museum of American Art (no. 62.18a-e)

2. **Untitled, 1976**

Sheet metal, rod, and paint. Calder Foundation, New York

3. **Black Widow, 1948**

Sheet metal, wire, and paint. Instituto de Arquitetos do Brasil—Departamento de São Paulo; On deposit from the Artist, 1948

4. **Tentacles, 1947**

Sheet metal, wire, and paint. Calder Foundation, New York

5. **The Green Stripe, 1963**

Oil on canvas. Calder Foundation, New York

6. **Black Widow, 1959**

Sheet metal, bolts, and paint. The Museum of Modern Art, New York. Mrs. Simon Guggenheim Fund, 1963

7. **21 feuilles blanches, 1953**

Sheet metal, wire, and paint. YAGEO Foundation Collection, Taiwan

8. **Sword Plant, 1947**

Sheet metal, wire, and paint. Calder Foundation, New York

9. **Myxomatose, 1953**

Sheet metal, wire, and paint. Calder Foundation, New York

10. **Untitled, c. 1952**

Sheet metal, wire, and paint. Calder Foundation, New York

11. **São Paulo, 1955**

Oil on plywood. Calder Foundation, New York

12. **Jerusalem Stabile II, 1976**

Sheet metal, bolts, and paint. Calder Foundation, New York; Gift of the Philip & Muriel Berman Foundation, 2005

13. **3 Segments, 1973**

Sheet metal, rod, wire, and paint. Calder Foundation, New York

14. **29 feuilles blanches, 1960**

Sheet metal, wire, and paint. Private collection

15. **Eucalyptus, 1940**

Sheet metal, wire, and paint. Calder Foundation, New York; Gift of Andréa Davidson, Shawn Davidson, Alexander S. C. Rower & Holton Rower, 2010

16. **Tripes, 1974**

Sheet metal, bolts, and paint. Calder Foundation, New York

17. **Knobs, 1976**

Sheet metal, bolts, and paint. Calder Foundation, New York

18. **Untitled, 1954**

Sheet metal, rod, bolts, and paint. Calder Foundation, New York; Gift of Andréa Davidson, 2007

19. **Thirty-Two Discs, 1951**

Sheet metal, rod, wire, and paint. Calder Foundation, New York

20. **Little Yellow Panel, 1936**

Wood, sheet metal, wire, string, and paint. Calder Foundation, New York

21. **Large Flat Black, 1957**

Sheet metal, wire, and paint. Private collection

22. **Polygons on Triangles, 1963**

Sheet metal, bolts, and paint. Calder Foundation, New York

23. **Untitled, 1946**

Oil on canvas. Calder Foundation, New York

24. **Serpentine, 1932**

Ink on paper. Calder Foundation, New York

25. **The Planet, 1933**

Ink on paper. Calder Foundation, New York

26. **Fetishes, 1944**

Oil on canvas. Calder Foundation, New York

27. **Untitled, 1943**

Wood, wire, and paint. Private collection

28. **Untitled, 1943**

Wood, wire, and paint. Private collection

29. **Untitled, 1962**

Gouache and ink on paper. Calder Foundation, New York; Mary Calder Rower Bequest, 2011

30. **Untitled, c. 1945**

Oil on canvas. Calder Foundation, New York

31. **Untitled, 1948**

Sheet metal, wire, and paint. Calder Foundation, New York

32. **Small Gallery Works**

These works are by various artists.

a. **Star Maiden, 1914**

Alexander Stirling Calder
Painted plastic travertine.
Calder Foundation, New York;
Purchase, 2023

b. **Self-Portrait, c. 1924**

Alexander Calder
Oil on canvas. Calder Foundation,
New York; Purchase, 2016

c. **A. Stirling Calder, c. 1915**

Nanette Lederer Calder
Oil on canvas. Calder Foundation,
New York; Gift of Alexander S. C. Rower,
2022

d. **William Penn, 1888**

Alexander Milne Calder
Bronze. Calder Foundation, New York;
Purchase, 2020

e. **Calder in Scottish Cap and Cape, c. 1904**

Nanette Lederer Calder
Oil on canvas. Private Collection,
New York

f. **Laughing Boy, c. 1905**

Alexander Stirling Calder
Bronze. Private Collection, New York