

THE BARNES FOUNDATION

**Press Images**

1. View from Pennsylvania Avenue. The Barnes Foundation, Philadelphia. (March 2012) © Tom Crane 2012



2. Aerial view from the Benjamin Franklin Parkway and 20<sup>th</sup> Street. The Barnes Foundation, Philadelphia. (March 2012) © Tom Crane 2012

Additional images and hi-resolution images are available online at [press.barnesfoundation.org](http://press.barnesfoundation.org)



3. View from 21st Street. The Barnes Foundation, Philadelphia.  
© The Barnes Foundation



4. View from 21<sup>st</sup> Street. The Barnes Foundation, Philadelphia. (March 2012) © Tom Crane 2012



5. Looking south east. The Barnes Foundation Philadelphia.  
© 2012 Tom Crane



6. View of the Light Court, looking east.  
The Barnes Foundation, Philadelphia. © 2012 Tom Crane



7. View of the Light Court, looking west. The Barnes Foundation, Philadelphia.  
© 2012 The Barnes Foundation

Additional images and hi-resolution images are available online at [press.barnesfoundation.org](http://press.barnesfoundation.org)





8. View of Gallery Garden and Collection Gallery from Court.  
The Barnes Foundation, Philadelphia. (March 2012)  
© Tom Crane 2012



9. View of the Light Court, looking into the Collection Gallery.  
The Barnes Foundation, Philadelphia. © 2012 Tom Crane



10. Looking into the Gallery Garden.  
The Barnes Foundation, Philadelphia. © 2012 Tom Crane



11. View of the Auditorium. The Barnes Foundation, Philadelphia.  
© 2012 Tom Crane



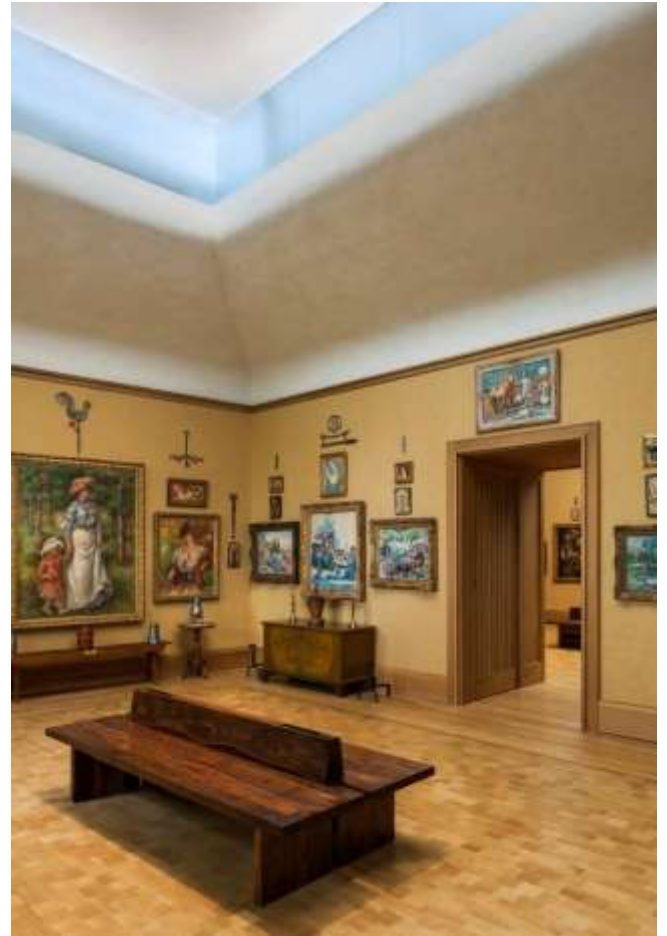
12. Lower Lobby, looking into the Gallery Garden and Library.  
The Barnes Foundation, Philadelphia. © 2012 Tom Crane



13. Looking east through Room 9 to Room 8.  
The Barnes Foundation, Philadelphia.  
© 2012 The Barnes Foundation



14. *Le Bonheur de Vivre* Room. The Barnes Foundation, Philadelphia.  
© 2012 Tom Crane



16. Room 18, north west view.  
The Barnes Foundation, Philadelphia.  
© 2012 Tom Crane



15. Room 6, east wall. The Barnes Foundation, Philadelphia.  
© 2012 Tom Crane





17. Room 23, west wall. The Barnes Foundation, Philadelphia.  
© 2012 The Barnes Foundation



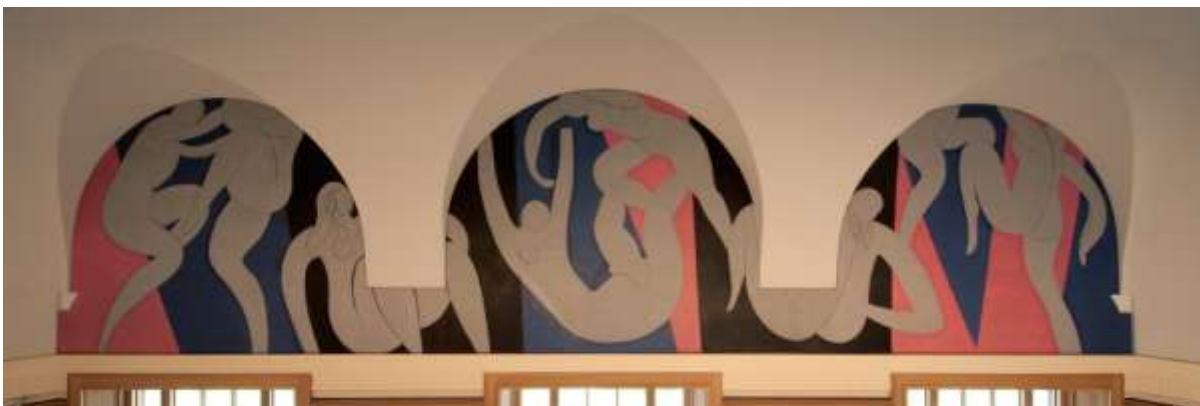
18. Room 18, east wall. The Barnes Foundation, Philadelphia.  
© 2012 The Barnes Foundation



19. Rendering of the entry plaza. The Barnes Foundation, Philadelphia. View of *The Barnes Totem*, 2012 by Ellsworth Kelly. Bead-blasted stainless steel, 40' x 80" x 20". Made possible through the generosity of The Neubauer Family Foundation



20. Dedication Ceremony for *The Barnes Totem* sculpture by Ellsworth Kelly, April 10, 2012, on the grounds of the Barnes Foundation's Philadelphia campus. Left to right: Ellsworth Kelly, Joe Neubauer, Jeanette Neubauer. Photo: © 2012 The Barnes Foundation



21. Henri Matisse, 1869-1954. *The Dance (La Danse)*, 1932-1933. Oil on canvas,  
Left : 133 3/4 x 173 3/4 inches (339.7 x 441.3 cm),  
Center: 140 1/8 x 198 1/8 inches (355.9 x 503.2 cm), Right: 133 3/8 x 173 inches (338.8 x 439.4 cm)  
The Barnes Foundation. Photograph by Rick Echelmeyer, © 2012 Barnes Foundation. 2001.25.50



22. Vincent van Gogh, Dutch, 1853–1890. *The Postman (Joseph-Étienne Roulin)*, 1889. Oil on canvas, 25 7/8 x 21 3/4 in. (65.7 x 55.2 cm). BF37 Photo: © 2012 The Barnes Foundation



23. Paul Cézanne, French, 1839–1906. *The Card Players (Les Joueurs de cartes)*, 1890–1892. Oil on canvas, 53 1/4 x 71 5/8 in. (135.3 x 181.9 cm). BF564 Photo: © 2012 The Barnes Foundation



24. Claude Monet, French, 1840–1926. *The Studio Boat (Le Bateau-atelier)*, 1876. Oil on canvas, 28 5/8 x 23 5/8 in. (72.7 x 60 cm). BF730 Photo: © 2012 The Barnes Foundation



25. Amedeo Modigliani, Italian, 1884–1920. *Redheaded Girl in Evening Dress (Jeune fille rousse en robe de soir)*, 1918. Oil on canvas, 45 3/4 x 28 3/4 in. (116.2 x 73 cm). BF206 Photo: © 2012 The Barnes Foundation



26. Pierre-Auguste Renoir, French, 1841–1919. *The Artist's Family (La Famille de l'artiste)*, 1896. Oil on canvas, 68 1/8 x 54 in. (173 x 137.2 cm). BF819 Photo: © 2012 The Barnes Foundation





27. Edgar Degas, French, 1834–1917.  
*Group of Dancers (Groupe de danseuses)*, c.  
1900. Oil pastel on paper, 22 3/4 x 16 1/8 in.  
(57.8 x 41 cm). BF121.  
Photo: © 2012 The Barnes Foundation



28. William James Glackens, American, 1870–1938.  
*Race Track*, 1908–1909. Oil on canvas, 26 1/8 x 32 1/4 in. (66.4  
x 81.9 cm). BF138.  
Photo: © 2012 The Barnes Foundation



29. Paul Gauguin, French, 1848–1903.  
*Mr. Loulou (Louis Le Ray)*, 1890. Oil on canvas,  
21 3/4 x 18 1/4 in. (55.2 x 46.4 cm). BF589.  
Photo: © 2012 The Barnes Foundation



30. Paul Cézanne, French, 1839–1906.  
*Still Life (Nature morte)*, 1892–1894. Oil on canvas, 28 3/4 x  
36 3/8 in. (73 x 92.4 cm). BF910.  
Photo: © 2012 The Barnes Foundation



31. Pierre-Auguste Renoir, French, 1841–1919. *Young Mother (Jeune mère)*, 1881. Oil on canvas, 47 3/4 x 33 3/4 in. (121.3 x 85.7 cm). BF15.

Photo: © 2012 The Barnes Foundation



32. Paul Cézanne, French, 1839–1906. *Mont Sainte-Victoire (La Montagne Sainte-Victoire)*, 1892–1895. Oil on canvas, 28 3/4 x 36 1/4 in. (73 x 92 cm). BF13. Photo: © 2012 The Barnes Foundation



33. Henri Rousseau, French, 1844–1910. *Woman Walking in an Exotic Forest (Femme se promenant dans un forêt exotique)*, 1905. Oil on canvas, 39 3/8 x 31 3/4 in. (100 x 80.6 cm). BF388. Photo: © 2012 The Barnes Foundation



34. *Seated Couple*, late 19th–early 20th century. Dogon peoples, Mali. Wood, 25 3/8 x 9 3/4 x 9 1/8 in. (64.5 x 24.8 x 23.2 cm). A197. Photo: © 2012 The Barnes Foundation