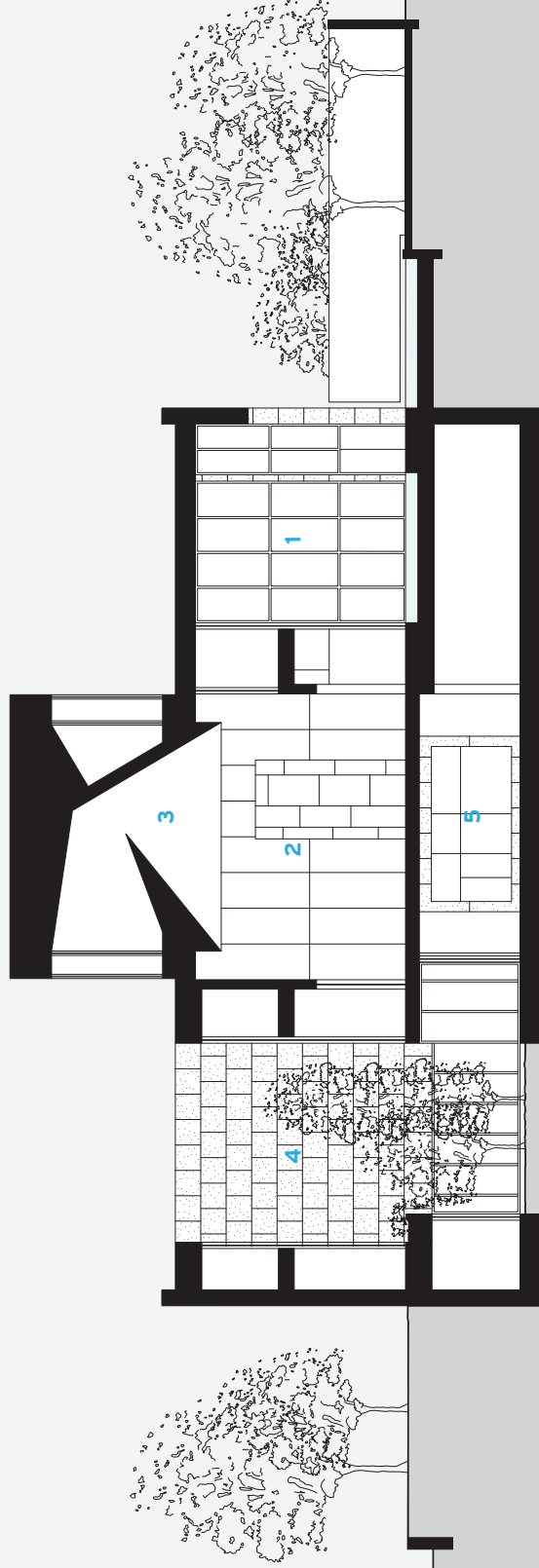


SECTION A-A: NORTH/SOUTH

- 1 ENTRY ALCOVE
- 2 THE LIGHT COURT
- 3 THE LIGHT CANOPY
- 4 GALLERY GARDEN
- 5 LOWER LOBBY



- SECTION B-B : EAST/WEST
- 1 THE LIGHT COURT
  - 2 THE TERRACE
  - 3 THE LIGHT CANOPY
  - 4 ADMINISTRATION
  - 5 EXHIBITION GALLERY
  - 6 AUDITORIUM
  - 7 LOWER LOBBY
  - 8 SEMINAR ROOMS
  - 9 SUPPORT

