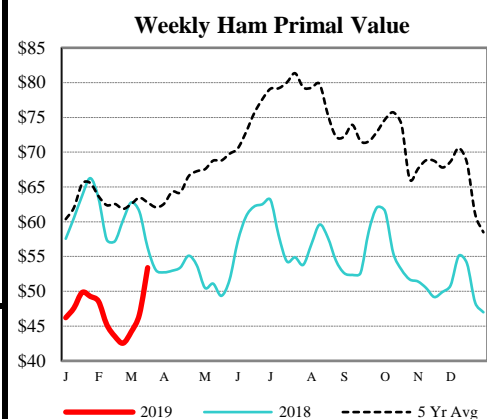
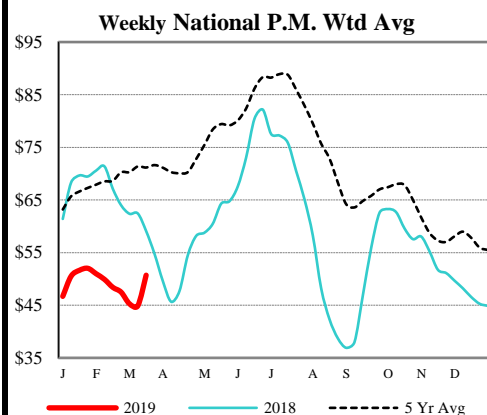


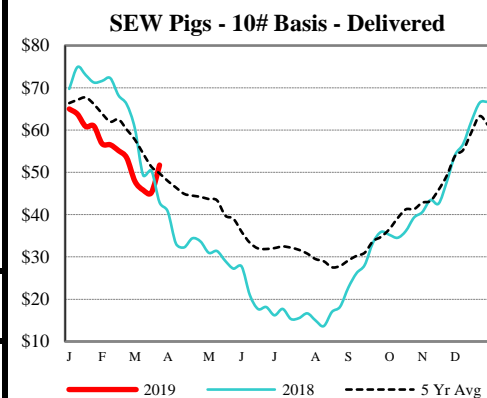
DAILY DIRECT HOGS PLANT DELIVERED as of 1:30 PM

Negotiated Barrow and Gilt:	Carcass Base Price	Live Price
<u>NATIONAL - LM_HG203:</u>		
Range:	\$56.00 - \$71.50	\$36.00 - \$50.50
Weighted Average:	\$66.44	\$46.02
Change from Prior Day:	2.29 higher	2.06 higher
Receipts:	6,234	1,464
<u>IOWA/MINNESOTA - LM_HG206:</u>		
Range:	\$56.00 - \$71.50	N/A - N/A
Weighted Average:	\$70.24	N/A
Change from Prior Day:	4.06 higher	N/A
Receipts:	2,926	381
<u>WESTERN CORNBELT - LM_HG212:</u>		
Range:	\$56.00 - \$71.50	N/A - N/A
Weighted Average:	\$68.79	N/A
Change from Prior Day:	2.98 higher	N/A
Receipts:	3,409	563
<u>EASTERN CORNBELT - LM_HG210:</u>		
Range:	N/A - N/A	N/A - N/A
Weighted Average:	N/A	N/A
Change from Prior Day:	N/A	N/A
Receipts:	2,825	645



NATIONAL DAILY PORK REPORT FOB PLANT- LM_PK602:

Carcass Cutout Values		Change:
Primal Loin	77.79	1.54
Primal Butt	71.59	1.21
Primal Picnic	78.31	3.23
Primal Rib	39.35	(-0.21)
Primal Ham	120.87	2.00
Primal Belly	67.95	2.18
Total Loads	140.14	1.99
Pork Cuts	336.93	
Trim/Process Pork	286.34 Lds	
	50.60 Lds	



Weekly USDA By-Product Drop Value (Hog): 3.33 0.03

DAILY EST. HOG SLAUGHTER UNDER FIS - SJ_LS710

Today (est)	455,000	Saturday:	166,000
Week Ago (est)	434,000		162,000
Year Ago (act)	453,000		112,000
Week to Date (est)	2,342,000		2,508,000
Same Period Last Week (est)	2,285,000		2,447,000
Same Period Last Year (act)	2,299,000		2,410,000

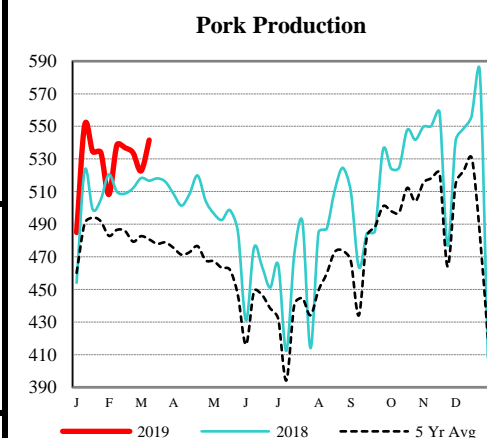
CME Lean Hog Close	High	Low	Settle	Change
APR	80.30	75.88	78.33	UNCH
MAY	89.10	83.50	87.03	0.42
JUN	97.83	91.03	95.68	0.92
JLY	101.53	94.53	98.58	1.00

CME Lean Hog Delayed Futures

US Direct Delivered Feeder Pig Summary for Weekending 22-Mar-19

Formula, Cash, & Composite Wtd Avg Prices

		Formula	Cash	Composite
SEW	10-12 lb Basis	41.78	51.73	46.61
Feeder Pigs	40 lb Basis		79.3	79.3



USDA Livestock, Poultry & Grain Market News

Des Moines, Iowa

Phone: 515-284-4460

Email: Desm.LPGMN@ams.usda.gov

[USDA AMS Livestock, Poultry & Grain Market News Portal](#)