



USDA National Retail Report - Chicken

Advertised Prices for Chicken to Consumers at Major Retail Supermarket Outlets during the period of 03/15 thru 03/21.

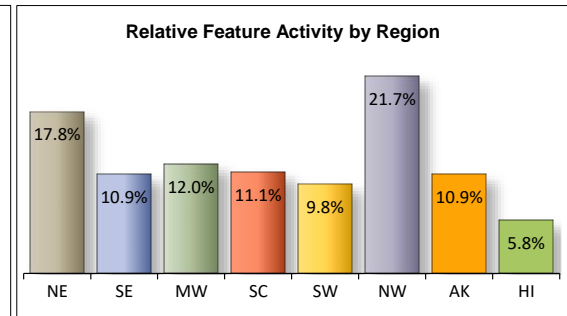
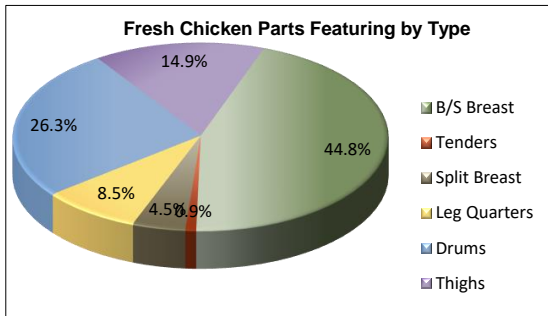
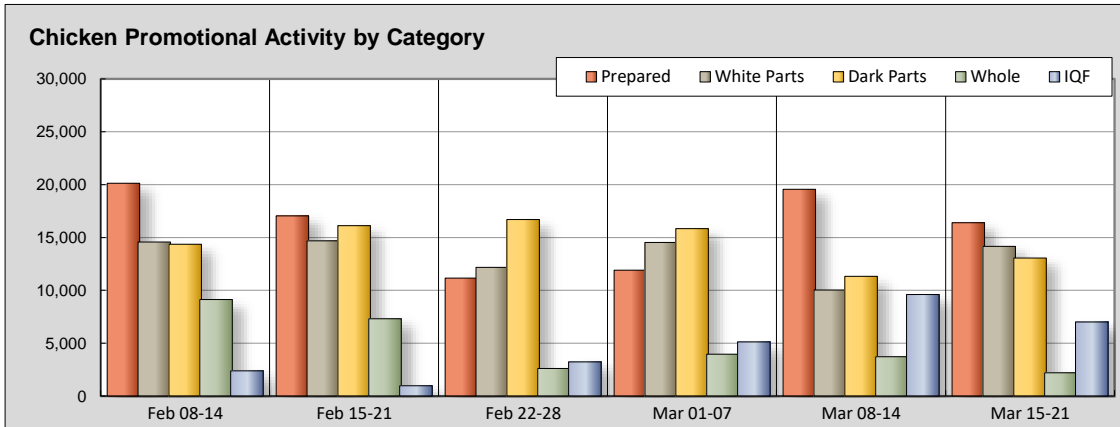
(prices in dollars per pound, fresh tray-pack product unless otherwise noted)

Fri. Mar 15, 2019

NATIONAL SUMMARY						
	THIS WEEK		LAST WEEK		LAST YEAR	
Feature Rate ^{1/}	87.7% of 29,200 outlets		84.4% of 29,200 outlets		74.7% of 29,100 outlets	
Special Rate ^{4/}	14.8%		19.7%		6.9%	
Activity Index ^{2/}	52,831		54,262		59,797	
WHOLE BIRD:	Stores ^{3/} Wtd Avg		Stores /3 Wtd Avg		Stores /3 Wtd Avg	
bagged fryer	1,360	1.07	2,548	1.19	5,025	1.08
cut-up fryer			175	2.52	621	1.21
bagged roaster	726	1.15	710	1.52	1,390	1.14
Cornish (frs/frz)	118	2.59	291	2.78	177	2.84
PARTS:						
Bnls/Sknls Breast						
regular pack	2,404	2.02	1,993	2.18	4,014	2.55
value pack	6,823	2.00	3,004	1.78	6,302	2.11
thin sliced	1,751	3.69	942	3.24	810	3.47
marinated	320	2.86	143	2.55	33	4.17
Breast Tenders						
regular pack	150	2.50	822	3.52	636	3.39
value pack	83	2.56	356	2.96	1,554	3.26
Split, bn-in Breast						
regular pack	389	1.92	381	1.15	575	1.43
value pack	755	1.11	751	0.96	2,570	1.18
Whole Wings	1,487	2.33	1,639	2.96	1,770	2.43
Leg Quarters						
tray pack	1,453	1.01	472	1.03	1,348	1.05
bagged	691	0.48	1,784	0.63	1,016	0.63
Legs	97	2.11	84	2.03	235	1.31
Thighs						
regular pack	661	1.22	836	1.10	643	1.29
value pack	3,102	1.06	1,887	1.08	4,128	1.06
Drumsticks						
regular pack	986	1.03	1,068	1.01	653	1.25
value pack	5,634	1.01	2,203	0.96	4,094	1.03
Bnls/Sknls Thighs						
regular pack	194	2.77	720	2.45	716	2.46
value pack	240	1.97	2,274	1.94	1,238	2.34
9-pc Combos						
drum-thigh-breast						
drum-thigh-wing			12	1.48	45	2.37
IQF						
B/S Breast	1,295	2.31	2,961	2.18	672	2.52
Tenders	165	2.53	1,352	2.29	674	3.24
Wings	4,762	2.58	217	1.99	4,479	2.69
Party Wings	789	2.58	5,077	2.59	164	2.50

This Week's Chicken Feature Highlights

The feature rate increases slightly while the activity index and incentives to purchase drops heading into the second full week of the new month. Competition in the meat case is tough this week, Lenten and St. Patrick's Day items take center stage. Bagged whole chickens, roasters and Cornish offer a break from the higher pricing reported last week. White meat parts increase volume this week led by bulk pack b/s breast which doubles in offerings but you must pay the higher price. Deals are there but you must look. Dark meat parts also increase their footprint slightly, thighs and drums and b/s thighs raise prices. IQF parts have been waiting their turn and get a major push from whole wings which increase volumes significantly; party wings take a break. Activity in the deli case slows but prepared foods of all types are still available. Specialty and organics offers decline.



All report information gathered from publicly available sources including store circulars, newspaper ads, and retailer websites.

^{1/} Feature Rate: the amount of sampled stores advertising any reported chicken item during the current week, expressed as a percentage of the total sample. ^{2/} Activity Index: a measure of the absolute frequency of feature activity equal to the total number of stores for each advertised chicken item (e.g., a retailer with 100 outlets featuring 3 chicken items has an activity index of 300). ^{3/} Stores/Avg: the total number of advertising outlets and the weighted average price weighted by the respective number of outlets. ^{4/} Special Rate: the percentage of sampled stores with a no-price promotion (e.g., buy 1, get 1 free, etc.)



USDA National Retail Report - Chicken

Advertised Prices for Chicken to Consumers at Major Retail Supermarket Outlets during the period of 03/15 thru 03/21.

(prices in dollars per pound, fresh tray-pack product unless otherwise noted)

Fri. Mar 15, 2019

		NORTHEAST U.S. (CT,DE,MA,MD,ME,NH,NJ,NY,PA,RI,VT)				SOUTHEAST U.S. (AL,FL,GA,MS,NC,SC,TN,VA,WV)				MIDWEST U.S. (IA,IL,IN,KY,MI,MN,ND,NE,OH,SD,WI)			
Feature Rate ^{1/} Special Rate ^{4/} Activity Index ^{2/}		89.0% of 5,500 sampled outlets 17.7% of stores w/ no-price promotions Activity Index = 12,776				94.1% of 7,400 sampled outlets 18.8% of stores w/ no-price promotions Activity Index = 7,134				76.0% of 6,100 sampled outlets 7.2% of stores w/ no-price promotions Activity Index = 4,663			
WHOLE BIRD:		Price Range	Stores	Wtd Avg	Price Range	Stores	Wtd Avg	Price Range	Stores	Wtd Avg			
				4/			4/			4/			
bagged fryer		0.69 - 1.69	853	1.06	0.99	87	0.99	0.79 - 1.49	284	1.03			
cut-up fryer													
bagged roaster		0.98 - 1.69	520	1.17	0.99	76	0.99	0.99 - 1.59	130	1.17			
Cornish (frs/frz)		2.79	62	2.79	2.51	40	2.51						
PARTS:		Processor Brand	Store Brand	Stores	Wtd Avg	Processor Brand	Store Brand	Stores	Wtd Avg	Processor Brand	Store Brand	Stores	Wtd Avg
Bnls/Sknls Breast													
regular pack			1.79 - 1.99	245	1.94	1.99	1.78 - 1.99	82	1.91		0.99 - 3.88	281	2.17
value pack		1.77 - 3.69	1.49 - 2.99	2,214	2.35	1.99	1.47 - 2.99	1,759	1.94	1.99	1.29 - 2.79	1,093	1.91
thin sliced		2.99	2.48 - 3.99	468	3.01		3.99	1,160	3.99		3.99 - 4.99	59	4.75
marinated							3.99		3.99		2.99 - 3.99	219	3.39
Breast Tenders													
regular pack											1.99 - 3.99	105	2.61
value pack		2.49		69	2.49						2.79	12	2.79
Split, bn-in Breast													
regular pack			1.69 - 2.79	140	2.29	1.29		17	1.29	1.49	0.89 - 2.99	216	1.77
value pack		1.49	0.99	273	1.00	1.29 - 1.49	0.99 - 1.29	251	1.21				
Whole Wings		2.69	1.99	407	1.94		1.79 - 2.99	619	2.47		1.99 - 2.69	24	2.34
Leg Quarters													
tray pack		0.79	0.59 - 0.99	512	0.80		0.99	2	0.99	0.99	0.69 - 0.99	284	0.96
bagged		0.59 - 0.65	0.49 - 0.59	298	0.54	0.59	0.39	70	0.52		0.49 - 0.69	153	0.54
Legs													
Thighs													
regular pack							0.79 - 0.99	114	0.92		0.99	19	0.99
value pack		0.79 - 1.00	0.79 - 1.49	1,580	1.07	1.19	0.99 - 1.05	299	1.00	0.99	1.29	226	1.28
Drumsticks													
regular pack							0.99	40	0.99		0.79 - 0.89	162	0.89
value pack		0.77 - 1.00	0.69 - 1.49	4,028	1.01	1.19	0.59 - 1.05	292	0.93	0.99	0.69 - 1.29	247	1.24
Bnls/Sknls Thighs													
regular pack			1.69	62	1.69						1.79	43	1.79
value pack			1.99	209	1.99								
9-pc Combos													
drum-thigh-breast													
drum-thigh-wing													
B/S Breast						1.99		459	1.99	2.66	1.20 - 1.89	72	2.32
Tenders							2.37	11	2.37				
Wings		2.56	1.99 - 2.60	619	2.57	2.00 - 2.19	1.99 - 2.72	1,349	2.56	2.19	2.49 - 2.79	924	2.60
Party Wings		2.54	2.22	217	2.37	2.49 - 3.19		407	2.70	2.49 - 3.19		110	2.59



USDA National Retail Report - Chicken

Advertised Prices for Chicken to Consumers at Major Retail Supermarket Outlets during the period of 03/15 thru 03/21.

(prices in dollars per pound, fresh tray-pack product unless otherwise noted)

Fri. Mar 15, 2019

	SOUTH CENTRAL U.S. (AR,CO,KS,LA,MO,NM,OK,TX)				SOUTHWEST U.S. (AZ,CA,NV,UT)				NORTHWEST U.S. (ID,MT,OR,WA,WY)				
Feature Rate ^{1/} Special Rate ^{4/} Activity Index ^{2/}	93.5% of 4,900 sampled outlets 17.5% of stores w/ no-price promotions Activity Index = 5,306				83.2% of 3,800 sampled outlets 11.4% of stores w/ no-price promotions Activity Index = 3,223				92.9% of 1,300 sampled outlets 15.0% of stores w/ no-price promotions Activity Index = 3,118				
WHOLE BIRD:	Price Range	Stores	Wtd Avg		Price Range	Stores	Wtd Avg		Price Range	Stores	Wtd Avg		
bagged fryer	1.17 - 1.58	66	1.34		1.19 - 1.29	31	1.27		1.19 - 1.29	39	1.23		
cut-up fryer													
bagged roaster													
Cornish (frs/frz)	1.99	16	1.99										
PARTS:	Processor Brand	Store Brand	Stores	Wtd Avg	Processor Brand	Store Brand	Stores	Wtd Avg	Processor Brand	Store Brand	Stores	Wtd Avg	
Bnls/Sknls Breast													
regular pack	1.99	1.69 - 3.49	236	2.16		1.69 - 1.99	874	1.97		1.99	682	1.99	
value pack	1.99	1.19 - 2.79	504	1.78		1.59 - 2.49	472	1.80	1.58	1.49 - 2.29	779	1.53	
thin sliced		4.99	4	4.99		1.98	60	1.98					
marinated		1.68 - 2.99	101	1.72									
Breast Tenders													
regular pack		2.49	24	2.49		1.99	7	1.99		1.99	14	1.99	
value pack													
Split, bn-in Breast													
regular pack		0.99 - 2.99	16	1.49									
value pack	0.97 - 1.39	0.79	54	1.17	0.99	0.97 - 1.49	177	1.13					
Whole Wings		1.68 - 3.99	161	2.15		1.59 - 3.49	276	2.69					
Leg Quarters													
tray pack		0.99 - 1.29	538	1.27		0.79 - 0.88	117	0.84					
bagged	0.37	0.39 - 0.49	50	0.38		0.28 - 0.29	120	0.29					
Legs						1.49	37	1.49					
Thighs													
regular pack		1.29	510	1.29						1.38	11	1.38	
value pack	0.99 - 1.19		101	1.08	1.00	0.79	139	0.84	1.69	0.88	697	0.90	
Drumsticks													
regular pack	0.49	0.89 - 1.29	669	1.11		0.59 - 0.99	115	0.76					
value pack	0.99 - 1.19	0.39 - 0.77	147	0.91	1.00 - 1.29	0.79	152	0.87	1.29	0.88 - 0.98	708	0.89	
Bnls/Sknls Thighs													
regular pack					3.99		89	3.99					
value pack		1.79	20	1.79						1.95	11	1.95	
9-pc Combos													
drum-thigh-breast													
drum-thigh-wing													
ID	B/S Breast	1.99 - 2.40	1.99 - 2.31	665	2.05		5.99	89	5.99		1.39	10	1.39
	Tenders		2.37 - 2.80	144	2.63					1.39	10	1.39	
	Wings		2.60 - 2.72	1,225	2.60		2.60	468	2.60	2.60	157	2.60	
	Party Wings	2.54		55	2.54								



USDA National Retail Report - Chicken

Advertised Prices for Chicken to Consumers at Major Retail Supermarket Outlets during the period of 03/15 thru 03/21.

(prices in dollars per pound, fresh tray-pack product unless otherwise noted)

Fri. Mar 15, 2019

		ALASKA (AK)				HAWAII (HI)					
Feature Rate ^{1/}		100.0% of 100 sampled outlets				62.9% of 100 sampled outlets					
Special Rate ^{4/}		14.0% of stores w/ no-price promotions				5.7% of stores w/ no-price promotions					
Activity Index ^{2/}		Activity Index = 25				Activity Index = 190					
WHOLE BIRD:		Price Range	Stores	Wtd Avg	Price Range	Stores	Wtd Avg				
				4/			4/				
bagged fryer											
cut-up fryer											
bagged roaster											
Cornish (frs/frz)											
PARTS:		Processor Brand	Store Brand	Stores	Wtd Avg	Processor Brand	Store Brand	Stores	Wtd Avg		
Bnls/Sknls Breast											
regular pack			2.98	4	2.98						
value pack			2.99	2	2.99						
thin sliced											
marinated											
Breast Tenders											
regular pack											
value pack			3.79	2	3.79						
Split, bn-in Breast											
regular pack											
value pack											
Whole Wings											
Leg Quarters											
tray pack											
bagged											
Legs						2.49		60	2.49		
Thighs											
regular pack			1.39	7	1.39						
value pack						2.49		60	2.49		
Drumsticks											
regular pack											
value pack						2.49		60	2.49		
Bnls/Sknls Thighs											
regular pack											
value pack											
9-pc Combos											
drum-thigh-breast											
drum-thigh-wing											
ID#	B/S Breast										
	Tenders										
	Wings		2.60	10	2.60		2.60	10	2.60		
	Party Wings										



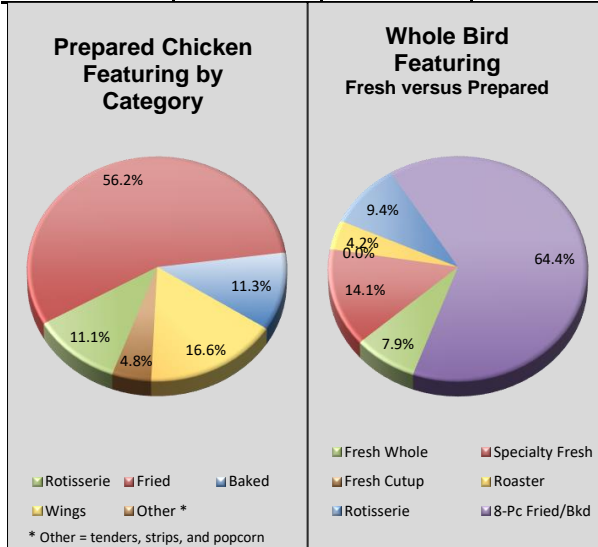
USDA National Retail Report - Chicken

Advertised Prices for Chicken to Consumers at Major Retail Supermarket Outlets during the period of 03/15 thru 03/21.

(prices in dollars per unit or per pound unless otherwise noted)

Fri. Mar 15, 2019

PREPARED FOODS NATIONAL SUMMARY																						
			THIS WEEK	LAST WEEK		LAST YEAR					NORTHEAST U.S.			SOUTHEAST U.S.			MIDWEST U.S.			SOUTH CENTRAL U.S.		
Feature Rate ^{1/}			43.1% of 29,200 outlets	44.8% of 29,200 outlets		24.9% of 29,100 outlets		Feature Rate ^{1/}			43.6% of 5,500 sampled outlets			51.1% of 7,400 sampled outlets			35.9% of 6,100 sampled outlets			39.7% of 4,900 sampled outlets		
Activity Index ^{2/}			16,396	19,560		14,215		Activity Index ^{2/}			Activity Index = 2,837			Activity Index = 4,333			Activity Index = 2,765			Activity Index = 2,184		
			Stores	Wtd Avg	Stores	Wtd Avg	Stores	Wtd Avg	price range stores wtd avg			price range stores wtd avg			price range stores wtd avg			price range stores wtd avg				
ROTISSERIE:																						
Whole Bird																						
< 2 lbs.			1,291	5.68	3,381	6.15	929	6.25	5.99 - 6.99 236 6.25			4.88 - 5.98 619 5.09			4.99 - 6.99 293 5.88			4.99 - 5.99 106 5.02				
2.1-3.0 lbs.			328	7.90	1,557	9.45	1,159	6.86	7.99 237 7.99			7.99 81 7.99			5.00 10 5.00							
Whole Breast			204	3.83	1,272	4.66	180	3.77	4.99 65 4.99			3.29 139 3.29										
Leg Quarter							329	2.14														
FRIED & BAKED:																						
Fried 8-Piece Mix			7,300	6.53	8,761	5.98	4,135	6.50	5.00 - 7.99 1,233 6.59			6.23 - 8.99 1,661 6.47			4.99 - 8.99 1,076 6.28			5.49 - 8.00 1,368 6.35				
Baked 8-Piece Mix			1,846	7.14	2,010	5.44	2,512	6.48	6.99 - 7.99 246 7.56			6.99 - 7.99 246 7.56			6.99 - 8.00 106 7.11							
F/B 8-Piece Dark			470	6.12	89	7.41	353	5.04	6.32 135 6.32			5.99 23 5.99			5.99 258 5.99			6.32 54 6.32				
F/B 12-Piece			84	10.47	286	8.62	166	11.90							10.00 - 10.99 84 10.47							
Bulk Pack (\$/piece)			1,367	0.58	1,255	0.57	646	0.71				0.54 1,133 0.54			0.50 36 0.50			0.69 - 0.70 138 0.70				
Wings: bone-in			1,803	5.70	455	6.51	1,572	6.65	4.00 - 6.99 303 4.75			5.99 211 5.99			3.99 - 7.99 397 5.66			4.99 - 5.99 190 5.93				
boneless			914	6.09	306	6.50	1,237	5.67	6.99 288 6.99			5.99 211 5.99			4.99 - 5.99 248 5.26			4.99 - 5.99 167 5.92				
Tenders			727	6.67	188	5.84	997	6.25	6.99 278 6.99			5.99 9 5.99			2.99 - 6.99 373 6.55			5.99 45 5.99				
Strips																						
Popcorn			62	3.99					3.99 62 3.99													
SOUTHWEST U.S.																						
Feature Rate ^{1/}			35.4% of 3,800 sampled outlets			64.5% of 1,300 sampled outlets			49.0% of 100 sampled outlets			28.6% of 100 sampled outlets										
Activity Index ^{2/}			Activity Index = 1,915			Activity Index = 2,203			Activity Index = 49			Activity Index = 110										
			price range stores wtd avg			price range stores wtd avg			price range stores wtd avg			price range stores wtd avg			price range stores wtd avg			price range stores wtd avg				
ROTISSERIE:																						
Whole Bird																						
< 2 lbs.															11.99 37 11.99							
2.1-3.0 lbs.																						
Whole Breast																						
Leg Quarter																						
FRIED & BAKED:																						
Fried 8-Piece Mix			4.99 - 7.99	1,103	6.76	6.23 - 6.99	839	6.85	6.23 10 6.23			6.23 10 6.23			6.23 10 6.23							
Baked 8-Piece Mix			4.99 - 7.99	812	7.15	6.99	682	6.99														
F/B 8-Piece Dark																						
F/B 12-Piece																						
Bulk Pack (\$/piece)															1.09 60 1.09							
Wings: bone-in									5.99 682 5.99			5.99 20 5.99			5.99 20 5.99							
boneless																						
Tenders												8.99 2 8.99			5.99 20 5.99							
Strips																						
Popcorn																						





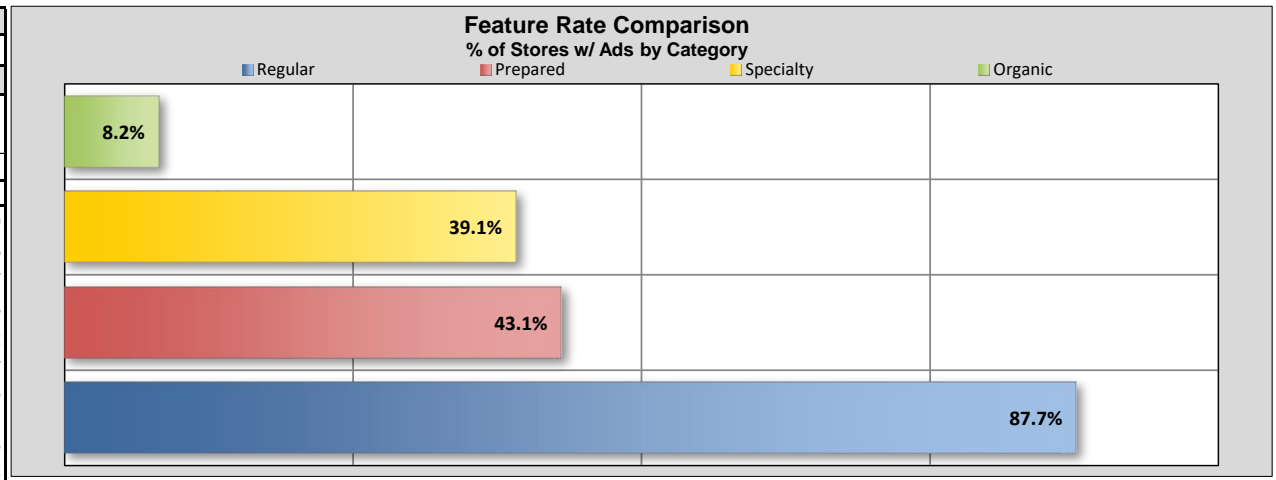
USDA National Retail Report - Chicken

Advertised Prices for Chicken to Consumers at Major Retail Supermarket Outlets during the period of 03/15 thru 03/21.

(prices in dollars per pound, fresh tray-pack product unless otherwise noted)

Fri. Mar 15, 2019

	NATIONAL SUMMARY					
	SPECIALTY CHICKEN					
	THIS WEEK		LAST WEEK		LAST YEAR	
Feature Rate ^{1/}	39.1% of 29,200 outlets		42.4% of 29,200 outlets		21.4% of 29,100 outlets	
Activity Index ^{2/}	16,802		19,344		9,302	
	Stores	Wtd Avg	Stores	Wtd Avg	Stores	Wtd Avg
Whole Fryer	2,424	1.30	1,565	1.53	776	1.79
Bnls/Sknls Breast	8,338	4.69	10,158	4.61	4,033	5.03
Breast Tenders	1,343	4.53	1,525	3.17	676	5.67
Split, bn-in Breast	752	2.20	511	1.41	181	2.53
Whole Wings	648	2.36	605	3.17	310	3.12
Leg Quarters	67	0.68	288	1.63	164	1.37
Legs	288	1.32	65	0.99	45	1.78
Thighs	1,034	1.47	973	1.66	1,124	1.71
Drumsticks	1,124	1.26	1,536	1.52	806	1.58
B/S Thighs	784	2.75	2,118	3.55	1,187	3.72



SPECIALTY	NORTHEAST U.S.			SOUTHEAST U.S.			MIDWEST U.S.			SOUTH CENTRAL U.S.			SOUTHWEST U.S.			NORTHWEST U.S.			
Feature Rate ^{1/}	26.3% of 5,500 sampled outlets			44.7% of 7,400 sampled outlets			34.9% of 6,100 sampled outlets			46.6% of 4,900 sampled outlets			34.8% of 3,800 sampled outlets			69.8% of 1,300 sampled outlets			
Activity Index ^{2/}	Activity Index = 2,976			Activity Index = 4,049			Activity Index = 4,034			Activity Index = 3,128			Activity Index = 1,656			Activity Index = 891			
	price range	stores	wtd avg	price range	stores	wtd avg	price range	stores	wtd avg	price range	stores	wtd avg	price range	stores	wtd avg	price range	stores	wtd avg	
Whole Fryer	1.29 - 1.99	261	1.48	0.99 - 2.79	1,337	1.32	0.99 - 2.79	348	1.52	0.99 - 2.79	50	1.31	0.87 - 2.49	399	0.92	0.99 - 2.79	29	1.49	
Bnls/Sknls Breast	3.99 - 6.49	1,525	4.91	2.99 - 4.84	1,769	4.47	1.66 - 5.99	1,293	4.28	1.99 - 4.99	1,930	4.49	3.99 - 5.99	914	4.70	4.84 - 5.99	839	5.77	
Breast Tenders	4.99 - 5.99	540	5.20	2.98 - 5.99	430	3.65	2.99 - 5.99	213	4.88	2.99 - 5.99	160	4.17							
Split, bn-in Breast	1.89 - 2.99	130	2.44		1.69	14	1.69	1.69 - 3.99	596	2.12							3.99	12	3.99
Whole Wings	1.77 - 2.99	113	1.94		2.99	226	2.99	1.99 - 2.99	298	2.03							2.49	11	2.49
Leg Quarters					0.68	67	0.68												
Legs	0.99 - 1.99	139	1.54					0.99 - 1.59	125	1.16		0.89	24	0.89					
Thighs		77	1.99	0.88 - 1.69	81	1.02	0.99 - 2.49	455	1.70	0.99 - 2.29	397	1.17		1.99	24	1.99			
Drumsticks		77	1.99	0.88 - 1.69	81	1.02	0.99 - 1.59	297	1.27	0.99 - 1.59	375	1.10	1.29 - 1.79	294	1.33				
B/S Thighs	2.99 - 3.69	114	3.40		2.99	44	2.99	1.99 - 2.99	409	2.21	1.97 - 4.99	192	3.18		4.99	25	4.99		
SPECIALTY	ALASKA			HAWAII															
Feature Rate ^{1/}	0.0% of 100 sampled outlets			0.0% of 100 sampled outlets															
Activity Index ^{2/}	Activity Index = 58			Activity Index = 10															
	price range	stores	wtd avg	price range	stores	wtd avg													
Whole Fryer																			
Bnls/Sknls Breast	4.29 - 5.49	58	4.61	4.84	10	4.84													
Breast Tenders																			
Split, bn-in Breast																			
Whole Wings																			
Leg Quarters																			
Legs																			
Thighs																			
Drumsticks																			
B/S Thighs																			

Specialty products are produced from chickens raised on an all vegetable diet without antibiotics and are minimally processed. USDA Certified Organic are products grown and processed according to USDA's national organic standards and certified by USDA-accredited State and private certification organizations. For more information, visit <http://www.ams.usda.gov/nop/>.

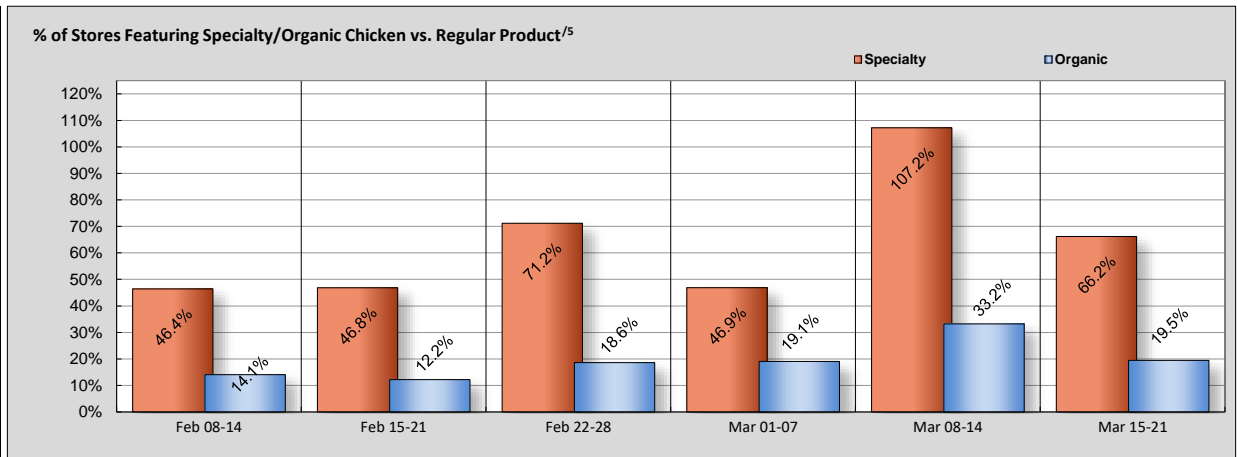


USDA National Retail Report - Chicken

Advertised Prices for Chicken to Consumers at Major Retail Supermarket Outlets during the period of 03/15 thru 03/21.

(prices in dollars per pound, fresh tray-pack product unless otherwise noted)

	NATIONAL SUMMARY					
	USDA ORGANIC CHICKEN					
	THIS WEEK		LAST WEEK		LAST YEAR	
Feature Rate ^{1/}	8.2% of 29,200 outlets		8.1% of 29,200 outlets		13.0% of 29,100 outlets	
Activity Index ^{2/}	5,016		5,806		5,001	
	Stores	Wtd Avg	Stores	Wtd Avg	Stores	Wtd Avg
Whole Fryer	814	2.73	1,067	2.62	483	3.79
Bnls/Sknl's Breast	1,738	6.58	1,589	6.70	1,978	7.10
Breast Tenders	1,077	6.93	1,323	7.74	41	4.79
Split, bn-in Breast			50	4.29	4	3.99
Whole Wings			64	3.99		
Leg Quarters	--	--	--	--	--	--
Legs						
Thighs	218	3.95	299	5.90	328	4.54
Drumsticks	141	3.67	373	2.42	642	2.94
B/S Thighs	1,028	5.65	1,041	5.92	1,525	4.83



⁵ % = total store count for Specialty items/by total store count for the same set of regular items.

ORGANIC	NORTHEAST U.S.			SOUTHEAST U.S.			MIDWEST U.S.			SOUTH CENTRAL U.S.			SOUTHWEST U.S.			NORTHWEST U.S.		
		10.3% of 5,500 sampled outlets Activity Index = 1,123			6.1% of 7,400 sampled outlets Activity Index = 865			5.1% of 6,100 sampled outlets Activity Index = 362			0.6% of 4,900 sampled outlets Activity Index = 31			4.3% of 3,800 sampled outlets Activity Index = 423			63.2% of 1,300 sampled outlets Activity Index = 2,186	
Whole Fryer	2.99	288	2.99	1.25 - 2.99	248	2.01	2.99 - 3.69	64	3.59			2.79 - 3.29	165	2.87	2.89 - 3.59	34	3.26	
Bnls/Sknl's Breast	6.99 - 8.99	362	7.84	5.00 - 5.98	339	5.58	6.49 - 7.99	231	7.29	6.49 - 6.99	7	6.78			5.99 - 7.99	788	6.20	
Breast Tenders	8.99	127	8.99	5.60	139	5.60						5.99	129	5.99	6.99	682	6.99	
Split, bn-in Breast																		
Whole Wings																		
Legs																		
Thighs	2.99 - 4.49	141	3.67				3.99	53	3.99	5.49	24	5.49						
Drumsticks	2.99 - 4.49	141	3.67															
B/S Thighs	5.49	64	5.49	4.00	139	4.00	4.99	14	4.99			5.79	129	5.79	5.99	682	5.99	
	ALASKA			HAWAII														
ORGANIC	26.0% of 100 sampled outlets Activity Index = 26			19.0% of 100 sampled outlets Activity Index = 20														
Whole Fryer	2.98	15	2.98															
Bnls/Sknl's Breast	7.49	11	7.49	7.99	20	7.99												
Breast Tenders																		
Split, bn-in Breast																		
Whole Wings																		
Legs																		
Thighs																		
Drumsticks																		
B/S Thighs																		

Specialty products are produced from chickens raised on an all vegetable diet without antibiotics and are minimally processed. USDA Certified Organic are products grown and processed according to USDA's national organic standards and certified by USDA-accredited State and private certification organizations. For more information, visit <http://www.ams.usda.gov/nop/>.