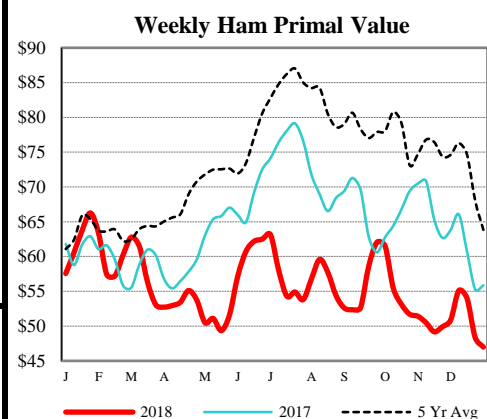
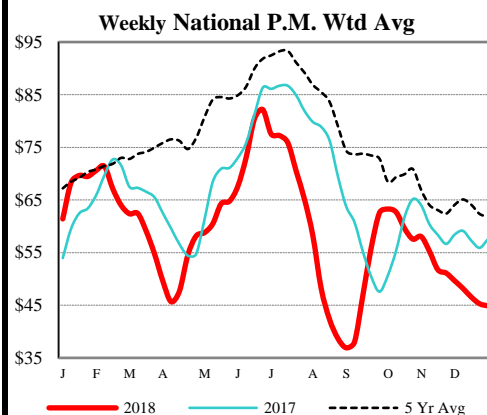


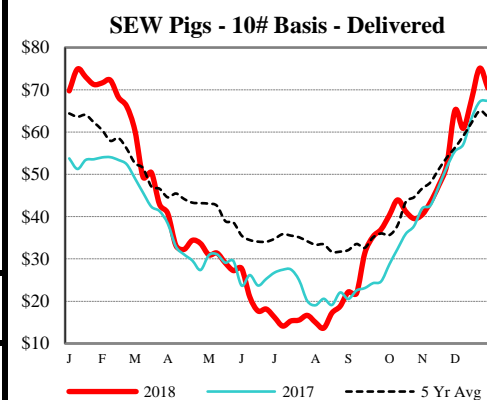
DAILY DIRECT HOGS PLANT DELIVERED as of 1:30 PM

Negotiated Barrow and Gilt:	Carcass Base Price	Live Price
<u>NATIONAL - LM_HG203:</u>		
Range:	\$47.00 - \$53.00	\$31.00 - \$42.00
Weighted Average:	\$50.88	\$38.51
Change from Prior Day:	0.20 lower	0.02 lower
Receipts:	6,386	1,353
<u>IOWA/MINNESOTA - LM_HG206:</u>		
Range:	\$49.00 - \$53.00	\$37.00 - \$42.00
Weighted Average:	\$50.73	\$40.56
Change from Prior Day:	0.27 lower	0.09 lower
Receipts:	2,393	499
<u>WESTERN CORNBELT - LM_HG212:</u>		
Range:	\$47.00 - \$53.00	\$37.00 - \$42.00
Weighted Average:	\$50.59	\$40.01
Change from Prior Day:	0.65 lower	0.93 higher
Receipts:	2,786	634
<u>EASTERN CORNBELT - LM_HG210:</u>		
Range:	N/A - N/A	00 - \$42.00 -
Weighted Average:	N/A	\$40.27
Change from Prior Day:	N/A	no comparison
Receipts:	3,600	467



NATIONAL DAILY PORK REPORT FOB PLANT- LM_PK602:

Carcass Cutout Values		Change:
Primal Loin	70.96	0.50
Primal Butt	62.97	(-1.56)
Primal Picnic	72.60	(-1.57)
Primal Rib	37.87	1.81
Primal Ham	124.33	(-0.06)
Primal Belly	49.34	1.03
Total Loads	142.25	3.60
Pork Cuts	334.13	
Trim/Process Pork	287.21 Lds	
	46.92 Lds	



Weekly USDA By-Product Drop Value (Hog): 3.39 (-0.04)

DAILY EST. HOG SLAUGHTER UNDER FIS - SJ_LS710

Today (est)	475,000	Saturday:	190,000
Week Ago (est)	477,000		427,000
Year Ago (act)	452,000		179,000
Week to Date (est)	2,375,000		2,565,000
Same Period Last Week (est)	1,835,000		2,262,000
Same Period Last Year (act)	2,261,000		2,440,000

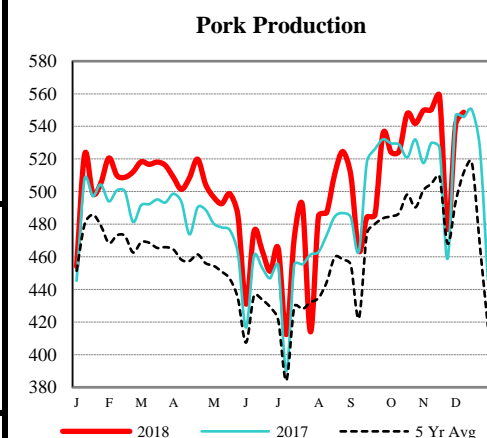
CME Lean Hog Close	High	Low	Settle	Change
FEB	63.70	62.43	62.65	(-1.42)
APR	68.25	66.43	67.35	(-0.50)
MAY	73.90	72.30	72.88	(-1.02)
JUN	81.28	79.35	79.90	(-1.50)

CME Lean Hog Delayed Futures

US Direct Delivered Feeder Pig Summary for Weekending 11-Jan-19

Formula, Cash, & Composite Wtd Avg Prices

		Formula	Cash	Composite
SEW	10-12lb Basis	47.23	63.77	55.78
Feeder Pigs	40 lb Basis	-	71.59	71.59



USDA Livestock, Poultry & Grain Market News

Des Moines, Iowa

Phone: 515-284-4460

Email: Desm.LPGMN@ams.usda.gov

[USDA AMS Livestock, Poultry & Grain Market News Portal](#)