

Daily Direct Steer and Heifer Slaughter Cattle Summary

For Trade on:

Thursday, September 13, 2018

LM CT100	5-AREA	LM CT109
Neg. Cash Volume:	4,876	Dressed Formula Vol: 36,205
Live Steer Avg:	\$107.82	Steer/Heifer Avg: \$172.65
Live Heifer Avg:	\$108.58	Dressed Neg. Grid Vol: 924
Dressed Steer Avg:	\$171.74	Steer/Heifer Avg: \$169.83
Dressed Heifer Avg:	\$172.00	TOTAL VOLUME: 42,005
LM CT106	TOTAL WK TO DATE VOLUME:	198,589
Committed:	27,905	Delivered: 73,422

LM CT118	TX-OK-NM	LM CT109
Neg. Cash Volume:	0	Dressed Formula Vol: 9,567
Live Steer Avg:	N/A	Steer/Heifer Avg: \$169.88
Live Heifer Avg:	N/A	Dressed Neg. Grid Vol: 0
Dressed Steer Avg:	N/A	Steer/Heifer Avg: N/A
Dressed Heifer Avg:	N/A	TOTAL VOLUME: 9,567
LM CT106	TOTAL WK TO DATE VOLUME:	64,256
Committed:	3,859	Delivered: 20,296

LM CT121	KANSAS	LM CT109
Neg. Cash Volume:	0	Dressed Formula Vol: 8,569
Live Steer Avg:	N/A	Steer/Heifer Avg: \$172.15
Live Heifer Avg:	N/A	Dressed Neg. Grid Vol: 0
Dressed Steer Avg:	N/A	Steer/Heifer Avg: N/A
Dressed Heifer Avg:	N/A	TOTAL VOLUME: 8,569
LM CT106	TOTAL WK TO DATE VOLUME:	52,465
Committed:	10,296	Delivered: 17,768

LM CT124	NEBRASKA	LM CT109
Neg. Cash Volume:	80	Dressed Formula Vol: 11,625
Live Steer Avg:	N/A	Steer/Heifer Avg: \$174.47
Live Heifer Avg:	N/A	Dressed Neg. Grid Vol: 0
Dressed Steer Avg:	N/A	Steer/Heifer Avg: N/A
Dressed Heifer Avg:	N/A	TOTAL VOLUME: 11,705
LM CT106	TOTAL WK TO DATE VOLUME:	36,827
Committed:	4,764	Delivered: 17,116

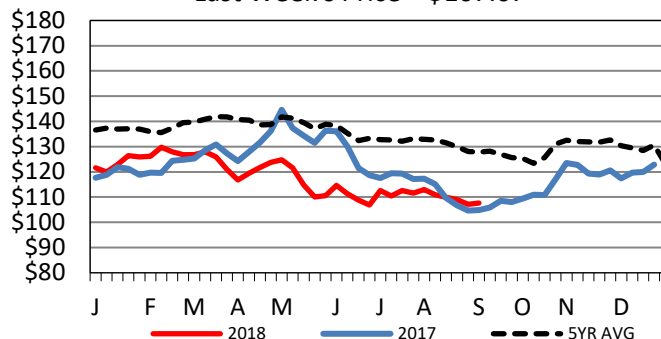
LM CT134	COLORADO	LM CT109
Neg. Cash Volume:	0	Dressed Formula Vol: 4,386
Live Steer Avg:	N/A	Steer/Heifer Avg: \$175.21
Live Heifer Avg:	N/A	Dressed Neg. Grid Vol: 123
Dressed Steer Avg:	N/A	Steer/Heifer Avg: \$166.14
Dressed Heifer Avg:	N/A	TOTAL VOLUME: 4,509
LM CT106	TOTAL WK TO DATE VOLUME:	22,319
Committed:	484	Delivered: 8,512

LM CT137	IA-MN	LM CT109
Neg. Cash Volume:	4,796	Dressed Formula Vol: 2,315
Live Steer Avg:	\$107.82	Steer/Heifer Avg: \$172.14
Live Heifer Avg:	\$108.58	Dressed Neg. Grid Vol: 801
Dressed Steer Avg:	\$171.74	Steer/Heifer Avg: \$170.39
Dressed Heifer Avg:	\$172.00	TOTAL VOLUME: 7,912
LM CT106	TOTAL WK TO DATE VOLUME:	23,592
Committed:	8,502	Delivered: 9,730

Thursday negotiated cash trading was at a standstill in the Southern Plains and Colorado. In Nebraska and the Western Cornbelt negotiated cash trade limited on very light demand. Not enough trades for a market trend. Last week in the Southern Plains and Colorado live cash trades moved at 108.00. Prior week in Nebraska live cash trades moved mostly at 107.00-108.00 and dressed cash trades at 170.00. For the previous week in the Western Cornbelt live cash trades moved at 107.00-108.50 and dressed cash trades mostly at 170.00.

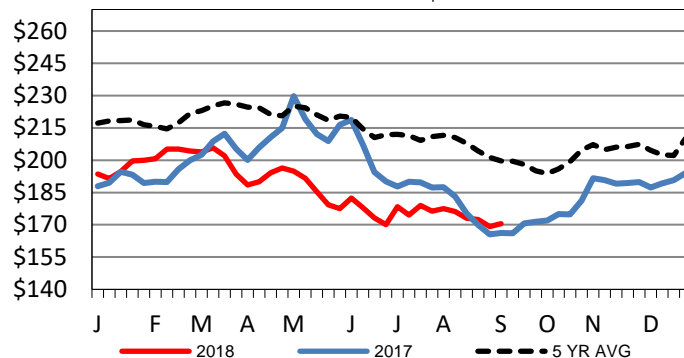
5-Area Live Steer Weighted Average

Last Week's Price = \$107.67



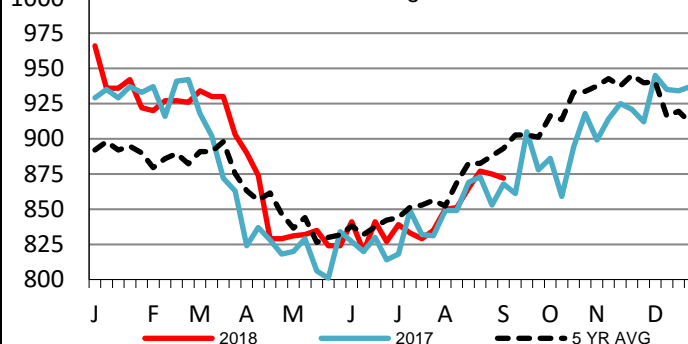
Iowa-Minnesota Wkly Dressed Steer Wtd Avg

Last Week's Price = \$170.58



Iowa-Minnesota Formula Carcass Weights

Last Week's Weight = 872 lbs



USDA Livestock, Poultry and Grain Market News

St. Joseph, Missouri

Phone: 816-676-7000

stjoe.lpgmn@ams.usda.gov