

Receipts:	This Week	Last Week	Year Ago
SJ LS850	462,900	254,400	404,200

Compared to last week, calves and yearlings sold fully steady to 5.00 higher. Last week's higher fed cattle market and continued good demand for calves and yearlings with active bidding have helped to keep the uptrend intact. Several auctions especially in Missouri noted that many calves that normally come to town in the fall are finding their way to the auction earlier as pasture conditions are deteriorating due to draught conditions. The market continues to be very active on loads of yearlings especially in desirable flesh conditions that every cattle feeder loves to buy. The past couple of weeks CME cattle futures have started the week with losses as it seem to be the path of least resistance and then having some recovery later in the week. Cattle futures have been very vulnerable and very fluid in moving one direction or the other; cattle contracts seem to be reflecting caution or wanting to error to the side of caution. Lately the breaks in the cattle futures are happening quicker than the rallies. The grain market over the last couple of weeks was starting to find some stability, with dry areas around the globe. That was until Friday's Crop Production report was released with corn production forecast at 14.6 billion bushel, down less than 1 percent from last year, with yields expected to average 178.4 bpa up 1.8 bpa from last year with estimate of 81.8 million acres to harvest. Soybeans were forecast at 4.59 billion bushels, up 4 percent from last year with yields expected to average 51.6 bpa up 2.5 bpa from last year. This week's crop conditions has corn rated at 71 percent good to excellent, compared to 72 percent last week and 60 percent a year ago. Despite cattle futures whip-sawing back and forth a large corn crop looming ahead ...

[More.....](#)

**REGIONAL WEIGHTED AVERAGE
FEEDER STEER PRICES**

NORTH CENTRAL REGION

Steers:	This Week	Last Week	Last Year
600-700 lbs	\$167.21	\$167.98	\$162.92
700-800 lbs	\$162.05	\$157.71	\$154.70
800-900 lbs	\$154.70	\$151.17	\$151.94

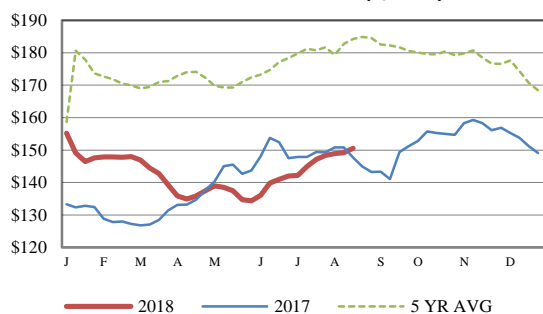
SOUTH CENTRAL REGION

Steers:	This Week	Last Week	Last Year
500-600 lbs	\$167.02	\$162.90	\$161.86
600-700 lbs	\$158.76	\$158.59	\$156.05
700-800 lbs	\$153.01	\$150.82	\$146.71

SOUTHEAST REGION

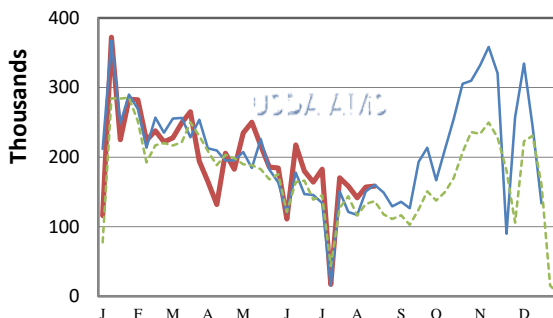
Steers:	This Week	Last Week	Last Year
400-500 lbs	\$158.02	\$158.75	\$154.72
500-600 lbs	\$151.54	\$152.51	\$148.17
600-700 lbs	\$143.09	\$143.77	\$139.79

CME FEEDER CATTLE INDEX (\$/CWT)

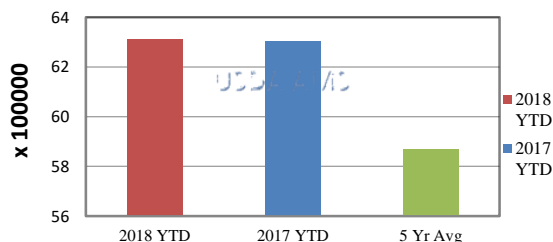


NATIONWIDE REPORTED WEEKLY FEEDER CATTLE AUCTION RECEIPTS

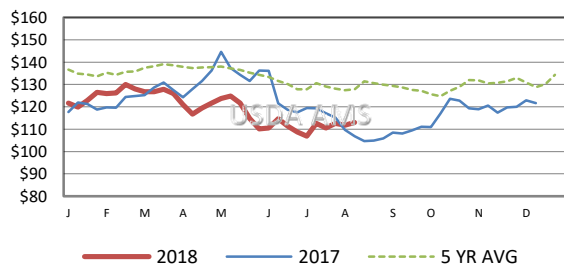
(Receipts vary depending on the number of auctions reported)



YEAR TO DATE



5 AREA WEEKLY WEIGHTED AVERAGE SLTR STEER PRICE (\$/CWT)



USDA Livestock, Poultry, & Grain Market News

St. Joseph, Missouri
Phone: 816-676-7000



For detailed state-by-state feeder cattle quotes:

[National Feeder & Stocker Cattle Summary](#)

<http://www.ams.usda.gov/LSMarketNews>