



# Weekly Cotton Market Review

Agricultural Marketing Service

Cotton and Tobacco Program ♦ Cotton Market News Division ♦ 3275 Appling Road ♦ Memphis, TN 38133 ♦ 901.384.3016

Mp\_cn812

Vol. 107 No. 48  
July 3, 2026

## Inside this Issue

[Market Overview](#)

[Spot Quotations](#)

[ICE Futures](#)

[Southeastern](#)

[Textile Mill Report](#)

[South Central](#)

[Southwestern](#)

[Western](#)

[Planted Acreage](#)

[Forward Contracting](#)

[Pima Quotations](#)

**\*Featured\***  
**Staple Distribution**

[Cotton Market Reports](#)

[Subscribe to this report](#)

[Subscribe to all  
Cotton Market reports](#)

Spot quotations averaged 133 points lower than the previous week, according to the USDA, Agricultural Marketing Services Cotton and Tobacco Program. Quotations for the base quality of cotton (color 41, leaf 4, staple 34, mike 35-36 and 43-49, strength 27.0-28.9, and uniformity 81.0-81.9) in the seven designated markets, averaged 69.51 cents per pound for the week ending Thursday, July 2, 2026. The weekly average was down from 70.84 cents last week but up from 65.19 cents reported in the corresponding period a year ago. Daily average quotations ranged from a low of 68.82 cents on Friday, June 26, to a high of 70.44 cents on Wednesday, July 1. Spot transactions reported in the Daily Spot Cotton Quotations for the week ended July 2 totaled 3,865 bales. This is compared to 592 reported last week and 6,904 bales reported the corresponding week a year ago. Total spot transactions for the season were 1,520,294 bales compared to 981,244 the corresponding week a year ago. The ICE Oct settlement price ended the week at 75.34 cents, compared to 75.17 cents last week.

41-4-34 Prices								
Date	SE	ND	SD	ETX-STX	WTX-KS-OK	DSW	SJV	7-MKT AVG
Jun 26	71.18	70.43	70.43	67.18	66.93	67.68	67.93	68.82
Jun 29	71.52	70.77	70.77	67.52	67.27	68.02	68.27	69.16
Jun 30	71.74	70.99	70.99	67.74	67.49	68.24	68.49	69.38
Jul 1	72.80	72.05	72.05	68.80	68.55	69.30	69.55	70.44
Jul 2	72.09	71.34	71.34	68.09	67.84	68.59	68.84	69.73
31-3-36 Prices								
Date	SE	ND	SD	ETX-STX	WTX-KS-OK	DSW	SJV	7-MKT AVG
Jun 26	76.93	75.18	74.68	73.93	70.68	73.68	80.33	75.06
Jun 29	77.27	75.52	75.02	74.27	71.02	74.02	80.67	75.40
Jun 30	77.49	75.74	75.24	74.49	71.24	74.24	80.89	75.62
Jul 1	78.55	76.80	76.30	75.55	72.30	75.30	81.95	76.68
Jul 2	77.84	76.09	75.59	74.84	71.59	74.59	81.24	75.97
Futures Settlement								Far Eastern A Index I/
Date	Jul-26	Oct-26	Dec-26	Mar-27	May-27	Jul-27	Current	
Jun 26	71.66	74.43	76.38	77.74	78.70	78.64	85.80	
Jun 29	72.00	74.77	76.45	77.80	78.78	78.74	85.30	
Jun 30	72.22	74.99	76.80	78.14	79.13	79.17	85.30	
Jul 1	73.28	76.05	77.84	79.19	80.18	80.20	85.55	
Jul 2	72.57	75.34	77.12	78.52	79.52	79.56	86.55	
Spot Transactions								
Date	SE	ND	SD	ETX-STX	WTX-KS-OK	DSW	SJV	PIMA
Jun 26	0	0	0	0	569	0	0	0
Jun 29	0	0	0	0	180	0	0	0
Jun 30	0	0	0	0	12	0	0	0
Jul 1	0	0	0	0	346	0	0	0
Jul 2	0	0	0	0	2,758	0	0	0
<b>Weekly Totals</b>	<b>0</b>	<b>0</b>	<b>0</b>	<b>0</b>	<b>3,865</b>	<b>0</b>	<b>0</b>	<b>0</b>

Source: USDA, AMS, Cotton and Tobacco Program, 1/ Cotlook

## Southeastern Markets Regional Summary

Danny Pino ♦ Macon, GA ♦ 478.752.3560 ♦ [Danny.Pino@usda.gov](mailto:Danny.Pino@usda.gov)

Spot cotton trading was inactive. Supplies and producer offerings were moderate. Demand was moderate. Average local spot prices were lower. Trading of CCC-loan equities was inactive.

Partly cloudy to overcast conditions prevailed across the lower Southeast with scattered showers and thunderstorms observed over the weekend and early week. Seasonably hot daytime temperatures were in the 90s. Nighttime lows were in the 70s. Light moisture was received across southeast Alabama, the Florida Panhandle, and areas of eastern and coastal Georgia early in the period. Precipitation totals measured from trace amounts to around one-half of an inch of moisture in isolated locales. Minimal moisture was forecast in the days ahead, but additional rainfall is needed to fortify sub-soil moisture, reduce crop stress, and invigorate young plants. According to the National Agricultural Statistics Service's (NASS) Crop Progress report released June 29, squaring advanced to 53 percent in Alabama and 46 percent in Georgia. Boll-setting advanced to 13 percent in Alabama and 8 percent in Georgia. The crop was rated as mostly good in Alabama and Georgia.

Partly cloudy to overcast conditions prevailed across cotton-growing areas of the upper Southeast over the weekend, with sunny, hot, and humid conditions observed as the week progressed. Daytime high temperatures were in the 90s.

Nighttime lows were in the 70s. Widespread scattered showers and thunderstorms brought around one-half of an inch to one inch of moisture to cotton-growing areas of the eastern Carolinas and Virginia. The moisture benefited the crop where severe to extreme drought conditions persisted along Atlantic coastal areas, but additional rainfall will be needed in the near term to invigorate young plants and advance the crop. According to NASS, squaring advanced to 48 percent in North Carolina, 42 in Virginia, and 30 percent in South Carolina. Boll-setting advanced to 3 percent in Virginia and was just getting underway in the Carolinas. The crop was rated mostly fair to good across the region.

### [Textile Mill](#)

Domestic mill buyers inquired for a moderate volume of color 42 and better, leaf 4 and better, and staple 35 and longer for July through December 2026 delivery. No sales and no additional inquiries were reported. Finished product demand was slow to moderate. Mill buyers maintained a cautious undertone as they balanced raw cotton purchases with finished product orders.

Demand through export channels was moderate. Agents throughout the Far East inquired for any discounted styles of cotton.

### [Trading](#)

- No trading activity was reported.

## South Central Markets Regional Summary

Aerielle McDaniel ♦ Memphis, TN ♦ 901.384.3016 ♦ [Aerielle.McDaniel@usda.gov](mailto:Aerielle.McDaniel@usda.gov)

### North Delta

Spot cotton trading was inactive. Supplies and producer offerings were light. Demand was light. Trading of CCC-loan equities were inactive. Average local spot prices were lower. A light volume of forward contracting was reported.

Generally sunny skies prevailed during most of the reporting period. Daytime highs were in the low-to-upper 90s. Occasional afternoon cloudiness helped cool nighttime lows into the 70s. Heat advisories were issued by the National Weather Service in Arkansas, Missouri, and Tennessee locales with heat indexes up to 109 degrees. Hot, humid conditions influenced a more favorable cotton growing environment. Heavy thunderstorms are in the nearby forecast. Accumulated precipitation totals measured from trace amounts to around two inches of rain. Consistent sunshine helped dry saturated stands, which allowed producers to resume field activities. Growers sprayed treatments to diminish weed growth. In Missouri, soaring crop dusters distributed fertilizer in fields. No plant bug activity was reported. According to the U.S. Drought Monitor report released on July 2, drought conditions were unchanged in Arkansas, Missouri, and Tennessee. As reported by the National Agricultural Statistics Service's Crop Progress report released on June 29, cotton squaring is well above the five-year average at 56 percent in Arkansas, 55 in Missouri, and 50 percent in Tennessee. Cotton conditions were mostly fair to good in Arkansas, Missouri, and Tennessee. Cotton setting bolls improved to 7 percent in Arkansas and 19 percent in Tennessee. Tennessee is above the five-year average. Arkansas is equivalent to the five-year average. Industry members prepared to attend virtual and in-person meetings in the upcoming weeks for pre-season preparations.

### South Delta

Spot cotton trading was inactive. Supplies and producer offerings were light. Demand was light. Trading of CCC-loan equities were inactive. Average local spot prices were lower. There was no interest in forward contracting.

Plentiful sunshine persisted during most of the reporting period. Daytime highs were in the 90s. Nighttime lows were in the 70s. Heat advisories were issued for north Mississippi areas by the National Weather Service, with heat indexes up to 111 degrees. Hot, dry climatic weather brought great cotton growing conditions to locales. Scattered thunderstorms were in the nearby forecast. Stray showers periodically accumulated trace amounts to around three-quarters of an inch of rain. Fields firmed enough to resume with limited outdoor activities. Herbicides were applied to stands to regulate weed growth. No plant bug activity was reported. According to the U.S. Drought Monitor Report released on July 2, drought conditions in Louisiana were nearly non-existent, with the same being true in Mississippi. As reported by the National Agricultural Statistics Service's Crop Progress report released on June 29, cotton setting bolls were below the five-year average at 3 percent in Louisiana, but above at 5 percent in Mississippi. Cotton conditions remained mostly fair to good in Louisiana and Mississippi. Industry members prepared to attend virtual and in-person meetings in the upcoming weeks for pre-season preparations.

### Trading

#### *North Delta*

- No trading activity was reported.

#### *South Delta*

- No trading activity was reported.

## Southwestern Markets Regional Summary

Bethany Lindgren ♦ Memphis, TN ♦ 901.384.3016 ♦ [Bethany.Lindgren@usda.gov](mailto:Bethany.Lindgren@usda.gov)  
Jane Byers-Angle ♦ Lubbock, TX ♦ 806.283.9389 ♦ [Jane.Byers-Angle@usda.gov](mailto:Jane.Byers-Angle@usda.gov)

### East Texas-South Texas

Spot cotton trading was inactive. Supplies and producer offerings were very light. Demand was light. Average local spot prices were lower. Trading of CCC-loan equities was inactive. No forward contracting activity was reported. Foreign mill inquiries were light. Interest was best from Bangladesh and Turkey.

In East Texas, sunshine and partly cloudy skies ruled during the week. Daytime high temperatures were in the mid-to-upper 90s, with nighttime lows in the mid-70s. No precipitation was reported. Local experts report that the crop is progressing well in central Texas. Producers applied plant-growth regulators, herbicides, and insecticides after the recent heavy rainfall. Stand progression in the area ranged from squaring up to full bloom in areas of central Texas and the central Blacklands. Sunny and windy conditions were observed in the South Texas region during the period. Daytime high temperatures ranged from the upper 80s to the upper 90s. Overnight lows were in the upper 70s and low 80s. No rainfall was recorded. Stages of development vary by region, in the Upper Gulf Coast, the earliest-planted stands are in their sixth week of bloom, most fields have reached cut-out in the Coastal Bend, and in the lower Rio Grande Valley, bolls were beginning to crack open in the early-planted fields, according to local experts. Pest treatments were ongoing following the prolonged rainfall the region received.

### West Texas-Kansas-Oklahoma

Spot cotton trading was moderate. Supplies and producer offerings were light. Demand was very light. Average local spot prices were lower. Producer interest in forward contracting was moderate. Trading of CCC-loan equities was inactive. Foreign mill inquiries were light. Interest was best from Bangladesh and Turkey.

In Texas, daytime highs ranged from the upper 90s to mid-100s, with overnight lows in the 60s and 70s. Intermittent thunderstorms delivered trace amounts to three inches of rainfall. Windy conditions persisted and Slaton, Texas received winds clocked at 110 miles per hour. Some locations received hail that damaged young plants. Crop adjusters assessed fields and some were released. The crop progressed but needed continued slow soaking rainfall throughout the growing season. Producers applied irrigation where needed. Scouting was ongoing for thrips, fleahoppers, lygus, and disease. The Saharan dust moved across the region.

In Kansas, temperature highs reached the mid-80s to mid-90s, and the lows stayed in the 60s and 70s. Rainfall was beneficial, but high winds hindered progress in some stands. Cotton-growing areas received trace amounts up to roughly four inches of precipitation. Stands advanced, though some struggled. Thrips were present but largely restrained by seed treatments; additional applications were applied as needed.

In Oklahoma, daytime highs ranged from the upper 90s to low 100s, with nighttime lows in the 70s. Intermittent thunderstorms delivered trace amounts to around two and three-quarters inches of much-needed precipitation. The Saharan dust cloud moved into the region. Weed pressure remained high, but stormy and windy conditions limited weed-control applications. Monitoring for thrips and fleahoppers continued.

## Southwestern Markets Regional Summary

Bethany Lindgren ♦ Memphis, TN ♦ 901.384.3016 ♦ [Bethany.Lindgren@usda.gov](mailto:Bethany.Lindgren@usda.gov)

Jane Byers-Angle ♦ Lubbock, TX ♦ 806.698.4648 ♦ [Jane.Byers-Angle@usda.gov](mailto:Jane.Byers-Angle@usda.gov)

### Trading

#### *East Texas/South Texas*

- No trading activity was reported.

#### *West Texas, Kansas, & Oklahoma*

- In Texas, mixed lots containing a light volume of color 33 and better, leaf 4 and better, staple 33-36, mike 36-49, strength 26-33, and uniformity 78-82 sold for 65.25 to 66.00 cents per pound, FOB car/truck, (compression charges not paid).
- In Kansas, a light volume mixed lot containing color 51-44, leaf 7-8, staple 37-39, mike 28-38, strength 29-32, uniformity averaging 80.5, and 100 percent extraneous matter traded for around 25.00 cents, same terms as above.
- In Oklahoma, a 2025-mixed lot containing a light volume of color 22 and better, leaf 4 and better, staple 32-38, mike 42-52, strength 28-31, and uniformity 78-83 sold for around 69.75 cents, same terms as above.
- A light volume of CCC-loan equities traded for 13.00 cents.

## Western Markets Regional Summary

Bethany Lindgren ♦ Memphis, TN ♦ 901.384.3016 ♦ [Bethany.Lindgren@usda.gov](mailto:Bethany.Lindgren@usda.gov)

### [Desert Southwest \(DSW\)](#)

Spot cotton trading was inactive. Supplies and producer offerings were light. Demand was light. Producer interest in forward contracting was light. Average local spot prices were lower. No forward contracting or domestic mill activity was reported. Foreign mill inquiries were light.

The DSW experienced predominately sunny and dry conditions during the period. Daytime highs were in the 90s to the 100s, with nightly lows in the 60s to 70s. Sporadic showers produced from trace amounts up to one-quarter of an inch of rain in the Safford Valley of Arizona. Squaring increased across Arizona, and boll-setting advanced. Overall, the DSW crop made good progress.

### [San Joaquin Valley \(SJV\)](#)

Spot cotton trading was inactive. Supplies and demand were light. No forward contracting or domestic mill activity was reported. Average local spot prices were lower. Foreign mill inquiries were light.

Abundant sunshine and mild weather activity persisted in the SJV this week. Daytime temperatures ranged from the 90s to the 100s. Nighttime lows were in the 50s to the 70s. No rainfall was recorded. The crop continued to progress well, and local sources report that things look good at this point in the season. Light insect pressure was reported, and treatments

were applied where needed for lygus. Fields were irrigated, and producers added fertilizers to rows.

### [American Pima \(AP\)](#)

Spot cotton trading was inactive. Supplies were moderate. Demand was light. No forward contracting or domestic mill activity was reported. Average local spot prices were steady. Foreign mill inquiries were very light.

Sunny and hot conditions continued across the Far West region. Daytime highs were in the 90s to the 100s. Overnight lows were in the 50s to 70s. Spotty rainfall produced from trace amounts up to one-quarter of inch of moisture in parts of Arizona. In Arizona, squaring was expanding. Pest pressures were light. In the SJV, local sources report that the crop made good progress. Irrigation was applied. Pesticides were sprayed for lygus, though pest pressures remain light. Producers supplemented fields with fertilizers. Cotton squaring and boll-setting increased.

**Save the Date:** The Visalia Classing Office will host the annual American Pima Guide Box Matching on July 22, 2026.

### [Trading](#)

#### *Desert Southwest*

- No trading activity was reported.

#### *San Joaquin Valley*

- No trading activity was reported.

#### *American Pima*

- No trading activity was reported.

## USDA, NASS, Crop Progress: Percentage of Upland Cotton Planted and Squaring

The USDA National Agricultural Statistics Service's Crop Progress report released on June 29 estimated that 37 percent of the U.S. upland cotton crop is squaring, 10 percent ahead of the previous week and 1 percent ahead of the five-year average. Additionally, 9 percent of the cotton crop was setting bolls, 4 percent ahead of the previous week, and equal to the five-year average.

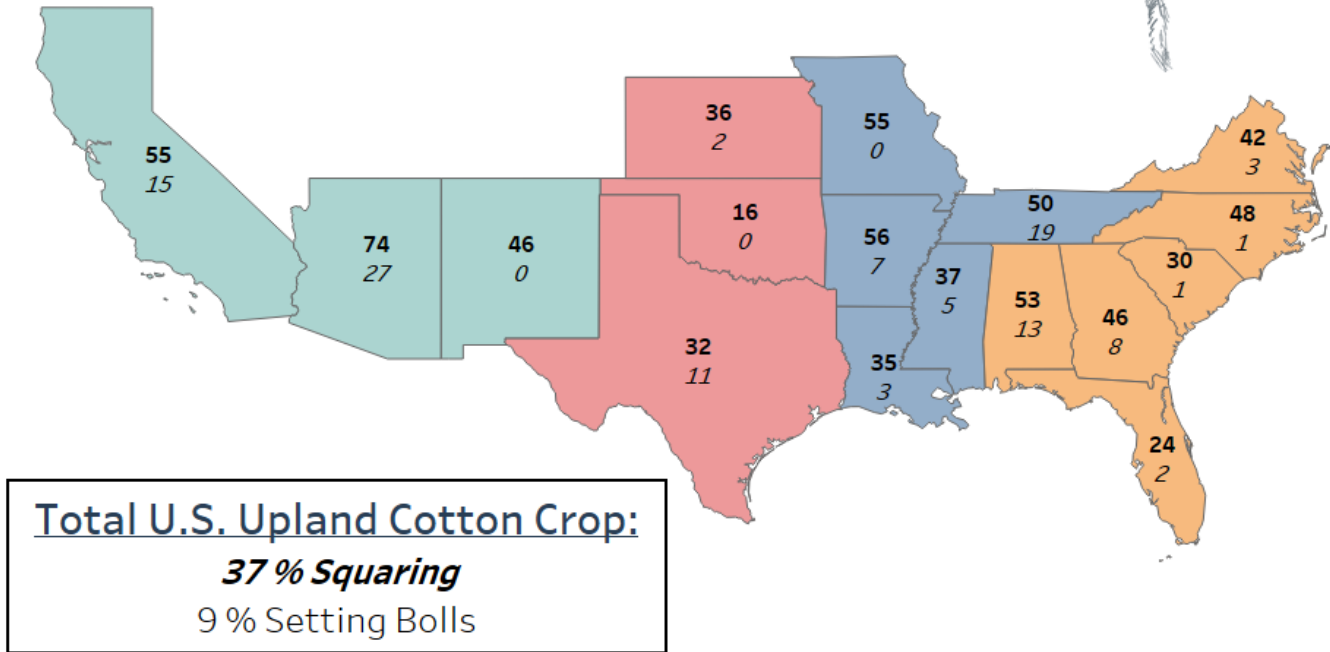
### USDA NASS: Upland Cotton Crop Progress by State, June 29, 2026



#### Values in the Map:

**Top Number = % Squaring**

**Bottom Number = % Setting Bolls**



USDA, AMS, Cotton and Tobacco Program, Market News, *Data Source: USDA, NASS, Crop Progress*

Data Source: <https://esmis.nal.usda.gov/sites/default/release-files/795928/prog2226.pdf>

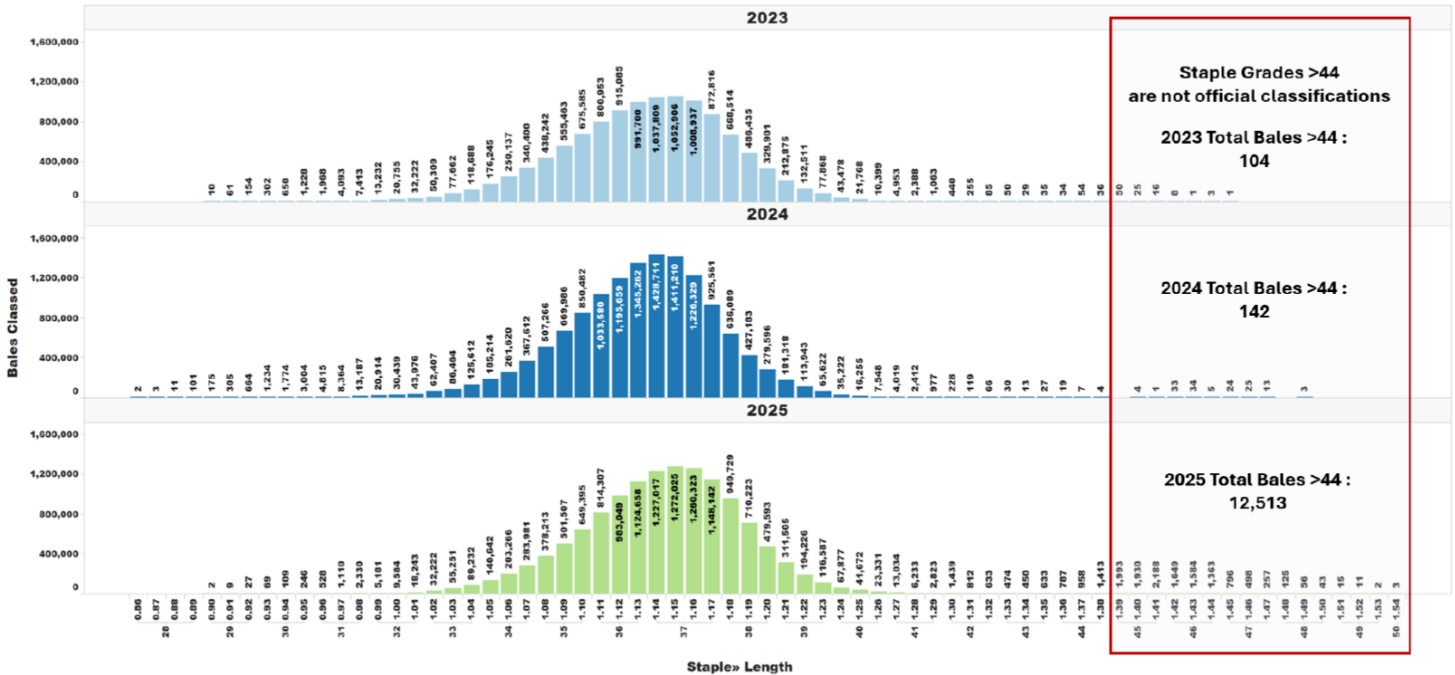
## U.S. Upland Cotton Crop Staple Distribution

The official staple lengths for U.S. Upland Cotton, measured in 32nds of an inch, range from "24" to "44 & +". Currently, the longest staple included in the AMS Cotton Market News' weekly quality reports is the "40 & +" designation. Market News is in the process of updating its weekly reports to include all official staple length designations.

For more detailed information, AMS Cotton Market News posts daily per-bale quality data, which includes the instrument measurement for length in inches. You can find this data by office (<https://mymarketnews.ams.usda.gov/viewReport/3471>) and state (<https://mymarketnews.ams.usda.gov/viewReport/3472>). Using this data, Market News has calculated implied staple designations for lengths exceeding 1.35 inches. The accompanying chart shows the number of bales for each staple designation, with staples greater than "44" represented as implied staple lengths. Implied staple lengths are calculated and provided for informational purposes only and are not official designations.

**Staple Distribution of U.S. Upland Cotton: 2023-2025 Crops**

Official Staple Grade (28-44), Unofficially Assigned Staple Grade (45-48)



## Forward Contracting

Upland cotton growers in the United States had booked 13 percent of their expected acreage by the end of June this season. This was above the 9 percent booked through the same period last year. Contracting has been equally active in South Central and Southwestern states where about 14 percent was under contract, compared to 2 percent and 14 percent respectively a year earlier. Southeastern states contracted about 9 percent by the end of June, compared to 3 percent the previous year. Western states contracted less than 1 percent compared to 1 percent a year earlier. These estimates were based on the National Agricultural Statistics Board's June Planted Acreage report and information collected by the Cotton and Tobacco Program's Market News Division.

<b>Cotton Forward Contracting Report</b>											
Forward contracting of Upland cotton by growers											
As of June 30, crops of 2017-2026 and planted acreage, 2026 crop 1/											
States	Cotton Crops										Planted Acreage 2/
	2017	2018	2019	2020	2021	2022	2023	2024	2025	2026	
	Pct.	Pct.	Pct.	Pct.	Pct.	Pct.	Pct.	Pct.	Pct.	Pct.	1,000 acres
Alabama	6	8	2	-	5	10	1	7	6	9	360
Florida	4	6	-	-	5	15	1	8	3	7	70
Georgia	17	24	3	*	16	14	1	1	*	10	1,000
North Carolina	7	11	9	*	14	13	4	5	7	8	350
South Carolina	7	4	6	-	26	4	8	*	5	6	170
Virginia	18	30	6	1	15	27	1	1	1	6	60
<b>Southeastern States</b>	<b>13</b>	<b>17</b>	<b>4</b>	<b>*</b>	<b>14</b>	<b>12</b>	<b>2</b>	<b>3</b>	<b>3</b>	<b>9</b>	<b>2,010</b>
Arkansas	11	35	10	-	13	47	4	5	1	21	470
Louisiana	35	16	21	-	-	62	-	2	2	13	110
Mississippi	7	12	2	*	6	12	-	*	5	2	430
Missouri	4	5	-	-	*	22	4	5	1	28	330
Tennessee	7	9	2	-	2	25	*	2	2	3	260
<b>South Central States</b>	<b>10</b>	<b>16</b>	<b>6</b>	<b>*</b>	<b>5</b>	<b>30</b>	<b>2</b>	<b>3</b>	<b>2</b>	<b>14</b>	<b>1,600</b>
Kansas	-	-	*	-	-	5	-	1	1	*	120
Oklahoma /3	1	1	*	1	-	1	-	*	2	*	450
Texas	7	3	-	2	4	13	1	2	15	16	5,400
<b>Southwestern States</b>	<b>6</b>	<b>3</b>	<b>*</b>	<b>2</b>	<b>4</b>	<b>12</b>	<b>1</b>	<b>2</b>	<b>14</b>	<b>14</b>	<b>5,970</b>
Arizona	7	8	-	-	31	26	3	-	-	1	70
California	-	-	-	-	-	-	-	-	-	-	20
New Mexico	-	-	-	-	-	6	-	-	3	-	30
<b>Western States</b>	<b>4</b>	<b>4</b>	<b>-</b>	<b>-</b>	<b>20</b>	<b>14</b>	<b>2</b>	<b>-</b>	<b>1</b>	<b>*</b>	<b>120</b>
<b>United States</b>	<b>8</b>	<b>8</b>	<b>2</b>	<b>1</b>	<b>6</b>	<b>15</b>	<b>2</b>	<b>3</b>	<b>9</b>	<b>13</b>	<b>9,700</b>

1/ Contracting estimates do not include cotton consigned to marketing organizations but do include cotton contracted with marketing organizations.

2/ Agricultural Statistics Board, NASS, USDA. 3/ Includes Kansas, 2017-2017 crops. \* Less than 0.5 percent.

## Planted Acreage

All cotton planted area for 2026 is estimated at 9.85 million acres, up 6 percent from last year. Upland area is estimated at 9.70 million acres, up 6 percent from 2025. American Pima area is estimated at 150,000 acres, up 6 percent from 2025.

### Cotton Area Planted and Harvested by Type – States and United States: 2025 and 2026

[Blank data cells indicate estimation period has not yet begun]

Type and State	Area planted		Area harvested	
	2025 (1,000 acres)	2026 (1,000 acres)	2025 (1,000 acres)	2026 <sup>1</sup> (1,000 acres)
<b>Upland</b>				
Alabama .....	290.0	360.0	285.0	
Arizona .....	87.0	70.0	86.0	
Arkansas .....	520.0	470.0	515.0	
California .....	18.0	20.0	17.9	
Florida .....	61.0	70.0	60.0	
Georgia .....	835.0	1,000.0	825.0	
Kansas .....	102.0	120.0	77.0	
Louisiana .....	90.0	110.0	80.0	
Mississippi .....	330.0	430.0	325.0	
Missouri .....	355.0	330.0	340.0	
New Mexico .....	30.0	30.0	24.0	
North Carolina .....	285.0	350.0	275.0	
Oklahoma .....	390.0	450.0	350.0	
South Carolina .....	170.0	170.0	167.0	
Tennessee .....	205.0	260.0	190.0	
Texas .....	5,300.0	5,400.0	4,000.0	
Virginia .....	73.0	60.0	72.0	
United States .....	9,141.0	9,700.0	7,688.9	
<b>American Pima</b>				
Arizona .....	15.5	15.0	15.5	
California .....	92.0	95.0	91.0	
New Mexico .....	13.0	15.0	12.9	
Texas .....	21.0	25.0	19.0	
United States .....	141.5	150.0	138.4	
<b>All</b>				
Alabama .....	290.0	360.0	285.0	
Arizona .....	102.5	85.0	101.5	
Arkansas .....	520.0	470.0	515.0	
California .....	110.0	115.0	108.9	
Florida .....	61.0	70.0	60.0	
Georgia .....	835.0	1,000.0	825.0	
Kansas .....	102.0	120.0	77.0	
Louisiana .....	90.0	110.0	80.0	
Mississippi .....	330.0	430.0	325.0	
Missouri .....	355.0	330.0	340.0	
New Mexico .....	43.0	45.0	36.9	
North Carolina .....	285.0	350.0	275.0	
Oklahoma .....	390.0	450.0	350.0	
South Carolina .....	170.0	170.0	167.0	
Tennessee .....	205.0	260.0	190.0	
Texas .....	5,321.0	5,425.0	4,019.0	
Virginia .....	73.0	60.0	72.0	
United States .....	9,282.5	9,850.0	7,827.3	

<sup>1</sup> Estimates to be released August 2026 in the *Crop Production* report.

[For complete report click here.](#)

## Number of Bales in Certificated Stocks

Delivery Points	Stocks as of 7-2-2026	Awaiting Review	Non-Rain Grown Cotton
Dallas/FT. Worth, TX	125,946	0	0
Galveston, TX	26,834	0	0
Greenville, SC	0	0	0
Houston, TX	32,242	0	0
Memphis, TN	12	0	0
<b>Total</b>	<b>185,034</b>	<b>0</b>	<b>0</b>

World market prices for upland cotton, in cents per pound, in effect from 12:01 a.m., EDT, Friday through midnight, EDT, Thursday

Description	2025-2026					
	May 29	Jun	Jun	Jun	Jun 26	Jul
	Jun 04	5-11	12-18	19-25	Jul 02	3-9
Adjusted world price 1/	63.49	63.20	61.26	62.37	63.88	61.94
Course count adjustment	0.00	0.00	0.00	0.00	0.00	0.00
Loan Deficiency Payment (LDP)	0.00	0.00	0.00	0.00	0.00	0.00
Fine count adjustment 2024	0.00	0.00	0.00	0.00	0.00	0.00
Fine count adjustment 2025	0.00	0.00	0.00	0.00	0.00	0.00

1/ Color 41, leaf 4, staple 34, mike 35-36 & 43-49, strength readings of 26.0-28.9 grams per tex, length uniformity of 80.0-81.9 percent.  
Source: Farm Service Agency, USDA.

Description	2024-2025		2025-2026	
	Through June 26, 2025		Through June 25, 2026	
	Week	Mkt. Year	Week	Mkt. Year
Outstanding sales	-	1,524,000	-	1,897,600
Exports	255,800	10,195,700	218,800	9,952,600
Total export commitments	-	11,719,700	-	11,850,200
New sales	70,400	-	62,100	-
Buy-backs and cancellations	46,800	-	12,900	-
Net sales	23,700	-	49,000	-
Sales next marketing year	106,600	1,818,900	44,100	2,419,700

Net sales of Upland totaling 49,000 RB for 2025/2026 were down 42 percent from the previous week and 70 percent from the prior 4-week average. Increases primarily for Vietnam (23,200 RB, including 1,600 RB switched from South Korea and decreases of 8,700 RB), India (7,400 RB, including 1,700 RB switched from Bangladesh), Pakistan (5,900 RB), China (5,500 RB, including decreases of 200 RB), and Mexico (2,600 RB, including decreases of 100 RB), were offset by reductions for South Korea (1,200 RB), Indonesia (1,200 RB), and Nicaragua (1,100 RB). Net sales of 44,100 RB for 2026/2027 were primarily for Honduras (11,300 RB), Guatemala (9,300 RB), Turkey (6,800 RB), Mexico (5,200 RB), and Peru (4,100 RB). Exports of 218,800 RB were down 27 percent from the previous week and 22 percent from the prior 4-week average. The destinations were primarily to Vietnam (57,300 RB), Turkey (49,800 RB), Pakistan (31,600 RB), Bangladesh (14,000 RB), and Mexico (12,000

RB). Net sales of Pima totaling 700 RB for 2025/2026--a marketing-year low--were down 84 percent from the previous week and 88 percent from the prior 4-week average. Increases were reported for India (200 RB, including decreases of 900 RB), Bangladesh (200 RB, including decreases of 300 RB), South Korea (200 RB), Bahrain (100 RB), and Thailand (100 RB). Net sales of 3,900 RB for 2026/2027 reported for India (2,300 RB) and Pakistan (1,700 RB), were offset by reductions for Egypt (100 RB). Exports of 24,400 RB--a marketing-year high--were up noticeably from the previous week and up 56 percent from the prior 4-week average. The destinations were primarily to India (12,400 RB), Vietnam (5,300 RB), China (1,300 RB), Djibouti (1,300 RB), and Egypt (1,000 RB). Exports for Own Account: For 2025/2026, new exports for own account totaling 1,500 RB were to Vietnam. Decreases of 500 RB were to Vietnam. The current exports for own account outstanding balance of 19,800 RB were to Vietnam (12,600 RB), China (3,200 RB), Bangladesh (2,700 RB), India (800 RB), and Turkey (500 RB).

Source: Export Sales Reporting Division, Foreign Agricultural Service, USDA.

July 2, 2026

NOTE: Data may not add due to rounding.

## American Pima Spot Quotations

American Pima quotations are for cotton equal to the Official Standards, net weight, in mixed lots, UD Free, FOB warehouse. 1/

AMERICAN PIMA SPOT QUOTATIONS					
Color	Leaf	Staple			
		44	46	48	50
1	1	142.75	148.50	153.25	153.25
	2	142.50	148.25	153.00	153.00
	3	135.75	143.50	147.50	147.50
	4				
	5				
	6				
2	1	142.50	148.25	153.00	153.00
	2	142.25	148.00	152.75	152.75
	3	135.50	143.25	147.25	147.25
	4	125.50	133.75	137.75	137.75
	5				
	6				
3	1	134.25	142.00	146.00	146.00
	2	131.75	139.50	143.50	143.50
	3	129.50	137.25	141.25	141.25
	4	120.50	128.25	132.25	132.25
	5	104.50	111.75	115.75	115.75
	6				
4	1	115.50	123.25	128.00	128.00
	2	115.25	123.00	127.25	127.25
	3	114.00	121.75	125.75	125.75
	4	109.00	116.75	120.75	120.75
	5	97.75	105.50	109.50	109.50
	6				
5	1				
	2	92.25	102.25	105.25	105.25
	3	92.25	101.75	105.00	105.00
	4	92.25	96.25	99.25	99.25
	5	92.00	96.00	99.00	99.00
	6				
6	1				
	2	84.50	87.50	90.50	90.50
	3	84.50	87.50	90.50	90.50
	4	84.50	87.50	90.50	90.50
	5	84.25	87.25	90.25	90.25
	6	83.75	86.75	89.75	89.75

**The current Pima spot quotations represent prices from local sales, export sales, and offerings last reported on June 8, 2026.**

### Mike

Range	Diff.
26 & Below	-2000
27-29	-1500
30-32	-1000
33-34	-500
35 & Above	0

### Strength

(Grams per Tex)	
Range	Diff.
34.9 & Below	-1650
35.0 – 35.9	-1400
36.0 – 36.9	-1150
37.0 – 37.9	-800
38.0 – 38.9	0
39.0 – 39.9	0
40.0 & Above	0

### Extraneous Matter

Type - Level	Diff.
Prep - Level 1	-810
Prep - Level 2	-1095
Other - Level 1	-715
Other - Level 2	-1035
Plastic - Level 1	-4000
Plastic - Level 2	-4000

1/ Pima spot quotations for color-leaf-staple combinations not quoted will be included as sales of those qualities which are reported.

July 2, 2026