



National Daily Cow and Boneless Beef Summary

Agricultural Marketing Service
Livestock, Poultry, and Grain Market News

July 2, 2026

Boneless Processing Beef and Beef Trimmings 100% Lean Items

	National		Central			Loads	Wtd Avg	Change
	LM_XB_401							
		Loads		Wtd Avg				
Fresh 92-94%		2.52	480.72	0.0	0.00			
Fresh 90%		5.6	465.43	3.5	469.62			
Fresh 85%		6.9	411.77	5.2	410.70			
Fresh 81%		0.0	0.00	0.0	0.00			
Fresh 65%		2.9	247.63	0.0	0.00			
Fresh 50%		8.3	181.85					
Cutter Cow Carcass Cutout						362.39		1.93
Inside Rounds - Boxed						2.5	490.48	(7.98)
Outside Rounds						0.0	0.00	0.00
Eye of Rounds						2.1	508.16	1.40
Flats and Eyes - Combc						1.6	519.26	1.26
Striploins						3.3	683.39	3.54
S.P.B. - Combo						1.8	523.37	(0.35)

Ground Beef

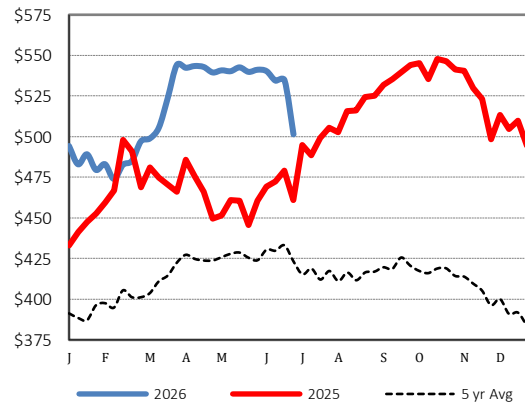
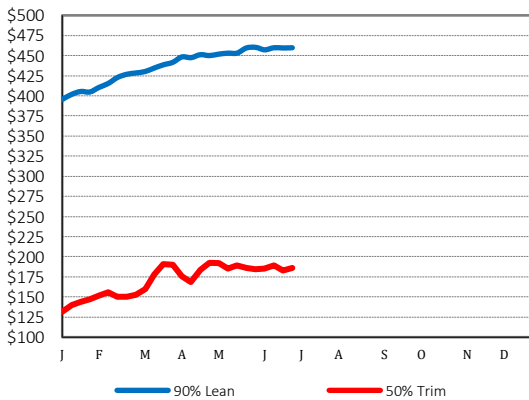
	LM_XB_403	Loads	Wtd Avg	Steer/Heifer/Cow Ground Beef
Fresh 73%		1.1	346.61	
Fresh 81%		2.0	422.60	
Fresh 93%				
Ground Chuck			0.00	
Ground Round				
Ground Sirloin				

	Loads	Wtd Avg
Fresh 81%	0.0	0.00
Fresh 93%		
Ground Chuck		

Daily Estimated Slaughter Daily Cow and Bull Bids

SJ_LS 710			LM_CT 138		
Today (est)		109,000	National	Low	High
Week Ago (est)		109,000	Breaker	276.00	321.00
Year Ago (act)		113,703	Boner	276.00	349.00
Week to Date (est)		433,000	Lean	287.00	358.00
Same Period Last Week (est)		433,000	Bulls	310.00	376.00
Same Period Last Year (act)		472,421			
Previous Day Est	Steer and Heifer	89,000	Northwest	Low	High
	Cow and Bull	21,000	Breaker	293.00	303.00
			Boner	277.00	321.00
			Lean	287.00	340.00
			Bulls	314.00	361.00

2026 90% Lean vs 50% Lean 100% Lean Inside Rounds



Des Moines, Iowa | 515-284-4460 | dsm.lpgmn@ams.usda.gov

www.ams.usda.gov/LPSMarketNewsPage