



Weekly Cotton Market Review

Agricultural Marketing Service

Cotton and Tobacco Program ♦ Cotton Market News Division ♦ 3275 Appling Road ♦ Memphis, TN 38133 ♦ 901.384.3016

Mp_cn812

Vol. 107 No. 45
June 12, 2026

Inside this Issue

[Market Overview](#)

[Spot Quotations](#)

[ICE Futures](#)

[Southeastern](#)

[Textile Mill Report](#)

[South Central](#)

[Southwestern](#)

[Western](#)

[Supply & Demand](#)

[Pima Quotations](#)

Featured
[Staple Distribution](#)

[Cotton Market Reports](#)

[Subscribe to this report](#)

[Subscribe to all
Cotton Market reports](#)

Spot quotations averaged 397 points lower than the previous week, according to the USDA, Agricultural Marketing Services Cotton and Tobacco Program. Quotations for the base quality of cotton (color 41, leaf 4, staple 34, mike 35-36 and 43-49, strength 27.0-28.9, and uniformity 81.0-81.9) in the seven designated markets, averaged 67.44 cents per pound for the week ending Thursday, June 11, 2026. The weekly average was down from 71.41 cents last week, but up from 62.71 cents reported in the corresponding period a year ago. Daily average quotations ranged from a high of 68.79 cents on Friday, June 5, to a low of 66.14 cents on Wednesday, June 10. Spot transactions reported in the Daily Spot Cotton Quotations for the week ended June 11 totaled 3,172 bales. This is compared to 8,583 reported last week and 5,266 bales reported the corresponding week a year ago. Total spot transactions for the season were 1,507,251 bales compared to 967,719 the corresponding week a year ago. The ICE July settlement price ended the week at 72.49 cents, compared to 74.89 cents last week.

41-4-34 Prices								
Date	SE	ND	SD	ETX-STX	WTX-KS-OK	DSW	SJV	7-MKT AVG
Jun 5	71.25	70.75	70.75	67.00	66.50	67.50	67.75	68.79
Jun 8	70.89	70.39	70.39	66.64	66.14	67.14	67.39	68.43
Jun 9	68.76	68.26	68.26	64.51	64.01	65.01	65.26	66.30
Jun 10	68.60	68.10	68.10	64.35	63.85	64.85	65.10	66.14
Jun 11	69.99	69.49	69.49	65.74	65.49	66.24	66.49	67.56
31-3-36 Prices								
Date	SE	ND	SD	ETX-STX	WTX-KS-OK	DSW	SJV	7-MKT AVG
Jun 5	77.00	75.50	75.00	73.75	70.25	73.50	80.15	75.02
Jun 8	76.64	75.14	74.64	73.39	69.89	73.14	79.79	74.66
Jun 9	74.51	73.01	72.51	71.26	67.76	71.01	77.66	72.53
Jun 10	74.35	72.85	72.35	71.10	67.60	70.85	77.50	72.37
Jun 11	75.74	74.24	73.74	72.49	69.24	72.24	78.89	73.80
Futures Settlement							Far Eastern A Index 1/	
Date	Jul-26	Oct-26	Dec-26	Mar-27	May-27	Jul-27	Current	
Jun 5	73.75	75.46	77.48	78.80	79.75	79.70	86.15	
Jun 8	73.39	75.50	77.61	78.87	79.82	79.74	85.50	
Jun 9	71.26	73.23	75.30	76.58	77.56	77.54	85.90	
Jun 10	71.10	73.28	75.30	76.60	77.62	77.62	83.65	
Jun 11	72.49	74.64	76.36	77.60	78.46	78.41	83.65	
Spot Transactions								
Date	SE	ND	SD	ETX-STX	WTX-KS-OK	DSW	SJV	PIMA
Jun 5	0	0	0	0	475	0	0	684
Jun 8	0	0	0	0	1,311	0	0	685
Jun 9	0	0	0	0	0	0	0	1,369
Jun 10	0	0	0	0	0	0	0	0
Jun 11	0	0	0	0	1,386	0	0	0
Weekly Totals	0	0	0	0	3,172	0	0	2,738

Source: USDA, AMS, Cotton and Tobacco Program, 1/ Cotlook

Southeastern Markets Regional Summary

Danny Pino ♦ Macon, GA ♦ 478.752.3560 ♦ Danny.Pino@usda.gov

Spot cotton trading was inactive. Supplies and producer offerings were moderate. Demand was moderate. Average local spot prices were lower. Trading of CCC-loan equities was inactive.

Partly cloudy skies prevailed during most of the period across the lower Southeast. A cooler-than-normal week dominated the weather pattern, with daytime high temperatures in the 80s that warmed into the 90s as the week progressed. Nighttime lows were mostly in the 70s. Precipitation was limited, but pockets of moisture were received in areas throughout Alabama, the Florida Panhandle, and central and north Georgia over the weekend. Precipitation totals measured from trace amounts to around three inches of moisture in north Alabama and northwest Georgia. Heavier accumulations were observed in localized areas. Dry conditions improved across much of the region, according to the U.S. Drought Monitor report. Reservoir and lake levels are recovering at a slower pace. Planting neared completion and squaring was underway in the earliest-planted fields. According to the National Agricultural Statistics Service's (NASS) Crop Progress report released June 8, planting advanced to 91 percent completed in Alabama and 85 percent completed in Georgia.

Mostly sunny conditions prevailed across the upper Southeast during most of the period. Daytime high temperatures were in the 90s. Nighttime lows were in the 60s and 70s. Stray showers brought light localized precipitation to areas of the Carolinas. Heavier accumulations of around one to one and

one-half inches were received along coastal Virginia. Droughty conditions expanded across eastern Virginia and degradations were reported along the Coastal Plain of North Carolina, according to the U.S. Drought Monitor report. Planting advanced in the region and fields were beginning to square. According to NASS, planting advanced to 92 percent completed in South Carolina and 86 percent completed in North Carolina and Virginia.

[Textile Mill](#)

Domestic mill buyers inquired for a moderate volume of color 41, leaf 4, and staple 35 and longer for November/December 2026 delivery. No sales and no additional inquiries were reported. Domestic yarn demand was slow to moderate. The undertone from mill buyers remained cautious.

Demand through export channels was moderate. Representatives for mills in Vietnam inquired for a moderate volume of USDA Green Card class, color 31, leaf 3, and staple 37 for fourth quarter 2026 shipment. Yarn demand into South America was reported as moderate.

[Trading](#)

- No trading activity was reported.

South Central Markets Regional Summary

Aerielle McDaniel ♦ Memphis, TN ♦ 901.384.3016 ♦ Aerielle.McDaniel@usda.gov

North Delta

Trading of spot cotton and CCC-loan equities was inactive. Supplies and producer offerings were light. Demand was light. Average local spot prices were lower. No forward contracting was reported.

Heavy cloudiness covered the region during the reporting period. Scattered thunderstorms over the weekend cooled daytime highs into the low-to-mid-80s. Sunny skies with strong wind gusts ranging from 20 to 30 miles per hour brought hot and humid temperatures, which allowed daytime highs to climb into the 90s. Nighttime lows were in the 70s. Sunshine helped firm topsoil after a period of rainfall. Accumulated precipitation totals measured from trace amounts to around seven inches of rain in isolated locations from occasional downpours throughout the week. As a result of the increased rainfall, an uptick in plant bug activity was noted and producers had begun to monitor the stands closely. No fieldwork was reported. Most of the cotton crop had been planted. Local experts reported observing high levels of growth within cotton fields as the crop continued to square. No replanting was reported. According to the U.S. Drought Monitor report, soil moisture improved in Arkansas, Missouri, and Tennessee with the help of wetter patterns over a period. Wetter conditions had begun to cancel out prolonged drought metrics. As reported by the National Agricultural Statistics Service's Crop Progress report released on June 8, cotton squaring advanced to 20 percent in Arkansas and to 16 percent in Tennessee. No squaring was reported in Missouri. Cotton conditions were rated mostly fair to good in Arkansas, Missouri, and Tennessee. The Annual Universal Cotton Standards Matching was held on June 10, 2026, in Memphis, TN.

South Delta

Spot cotton trading was inactive. Supplies and producer offerings were light. Demand was light. Trading of CCC-loan equities was inactive. Average local spot prices were lower. Industry participants hoped for an increase in cotton prices to influence forward contracting activity.

Mostly cloudy skies prevailed over the weekend, setting the tone for the start of the period. Daytime highs reached the upper 80s. Conditions improved as sunny skies returned, allowing temperatures to warm into the 90s. Overnight lows held in the 70s. Scattered thunderstorms moved through the region. Precipitation totals measured from trace amounts to around three-quarters of an inch of rain. Fieldwork was limited because of wet soils. Producers continued to work diligently between rains to monitor weed growth in fields. Insect pressures on stands were evaluated by local experts to prevent an increase in plant bug activity. According to the U.S. Drought Monitor report, drought conditions improved across Louisiana and Mississippi. Early-planted cotton fields continued to emerge. As reported by the National Agricultural Statistics Service's Crop Progress report released on June 8, cotton conditions were rated mostly fair to good. Cotton squaring in Louisiana and Mississippi were well below the five-year average. Cotton planting was nearing completion in Louisiana and Mississippi. No replanting was reported. Local industry members attended the Annual Universal Cotton Standards Matching that was held on June 10, 2026, in Memphis, TN.

Trading

North Delta

- No trading activity was reported.

South Delta

- No trading activity was reported.

Southwestern Markets Regional Summary

Bethany Lindgren ♦ Memphis, TN ♦ 901.384.3016 ♦ Bethany.Lindgren@usda.gov
Jane Byers-Angle ♦ Lubbock, TX ♦ 806.283.9389 ♦ Jane.Byers-Angle@usda.gov

East Texas-South Texas

Spot cotton trading was inactive. Supplies and producer offerings were light. Demand was light. Average local spot prices were lower. Trading of CCC-loan equities was inactive. No forward contracting activity was reported. Foreign mill inquiries were light to moderate. Interest was best from India, Pakistan, and Vietnam.

In East Texas, rain and cloudy conditions early in the week gave way to sunny skies and increased summertime heat for the remainder of the period. Daytime high temperatures were in the upper 80s and mid-90s. Nighttime lows were in the 70s. Rainfall totals ranged from lighter accumulations of over one-quarter of an inch up to three and one-half inches of precipitation in areas of the Blackland Prairies. The earliest-planted fields in the Brazos River Bottoms were blooming, and other fields were beginning to square. Pesticide applications were ongoing for fleahoppers as they moved into cotton fields from other crops being harvested, according to industry experts. In the lower Rio Grande Valley (RGV) and Upper Coast, sporadic showers and muggy conditions persisted throughout the week, breaking for sunshine and clouds intermittently. Other locations in the South Texas region returned to sunshine and drier conditions for the period. Daytime high temperatures were in the upper 80s to mid-90s, with nighttime lows in the upper 70s to low 80s. Recorded moisture accumulations ranged from one-quarter of an inch up to over three-quarters of an inch. In the Upper Gulf Coast, early-planted fields were setting bolls and flowering. Heavy and continuous rainfall in the last several weeks has resulted in a mixed bag of field conditions. Some fields were in full bloom and have benefitted greatly from recent rainfall, while other fields have remained saturated, leaving plants yellow and in need of a period of sunshine and dry conditions to rebound. Insurance adjusters have been scouting fields to determine whether abandonment is necessary. Local experts noted that some fields required replanting, while others were only recently planted for the first time. In the RGV, increasing pest populations were reported, and fields were scouted and treated. Crop tours were held in the South Texas region, along with local annual meetings.

West Texas-Kansas-Oklahoma

Spot cotton trading was slow. Supplies were light. Producer offerings were very light. Demand was light. Average local spot prices were lower. Producer interest in forward contracting was moderate. Trading of CCC-loan equities was inactive. Foreign mill inquiries were light to moderate. Interest was best from India, Pakistan, and Vietnam.

Daytime highs ranged from the low 80s to the low 100s, while overnight lows remained in the 60s and 70s across the region. Rainfall brought three-quarters of an inch to nearly four inches of precipitation to most cotton-growing areas, and additional showers were in the forecast. Some stands were failed in the Northern High Plains, but overall cotton stands progressed. Planting continued in the Southern High Plains and the Rolling Plains, often extending past sunset to meet insurance deadlines. Stands developed and varied from the cotyledon stage to pinhead squares, and fields were scouted for pests. Weeds were monitored. Ground rigs and aerial applicators were used to apply insecticide and herbicide.

In Kansas, daytime highs held steady in the low 80s to low 100s, with nighttime lows in the 60s and 70s. Cotton-growing areas received one-quarter of an inch to more than three inches of beneficial moisture. Stands emerged and progressed, and planting was completed. Scouting was conducted for thrips and other early-season pests on cotyledons and young cotton plants. The Kansas Cotton Association held a meeting for the industry.

Across Oklahoma, daytime temperatures ranged from the low 80s to the low 100s, and overnight lows held steady in the 60s and 70s. Thunderstorms brought roughly one-half of an inch to more than three inches of widespread, welcomed precipitation, improving industry sentiment. Partly cloudy and gusty conditions persisted through the period. Planting of dryland acres continued until the June 10 insurance deadline. Irrigated stands progressed, dryland stands emerged, and experts scouted fields for disease, insect pressure, and weeds.

Southwestern Markets Regional Summary

Bethany Lindgren ♦ Memphis, TN ♦ 901.384.3016 ♦ Bethany.Lindgren@usda.gov

Jane Byers-Angle ♦ Lubbock, TX ♦ 806.698.4648 ♦ Jane.Byers-Angle@usda.gov

Trading

East Texas/South Texas

- No trading activity was reported.

West Texas, Kansas, & Oklahoma

- In Texas, a lot containing a heavy volume of color 31 and better, leaf 3 and better, staple 36 and 37, mike 39-49, strength 29-33, and uniformity 78-83 sold for around 74.00 cents per pound, FOB car/truck, (compression charges not paid).
- In Oklahoma, lots containing a heavy volume of color 22 and better, leaf 4 and better, staple 35-40, mike 35-50, strength 27-33, and uniformity 79-83 traded for 70.50 to 72.00 cents, same terms as above.

Western Markets Regional Summary

Bethany Lindgren ♦ Memphis, TN ♦ 901.384.3016 ♦ Bethany.Lindgren@usda.gov

Desert Southwest (DSW)

Spot cotton trading was inactive. Supplies and producer offerings were light. Demand was light. No producer interest in forward contracting was reported. Average local spot prices were lower. No domestic mill activity was reported. Foreign mill inquiries were light.

Abundant sunshine and hot temperatures prevailed across the DSW this week. Daily temperatures were in the 100s. Nighttime lows were in the 60s to the 80s. No rainfall was recorded. Fields were irrigated in New Mexico. No immediate pest pressures or weed issues were reported. Local sources report the crop is looking good. Stands were putting on fruit and making good progress under the warm and dry temperatures. The crop advanced in Safford and Yuma, and blooming was expanding in Yuma. According to the National Agricultural Statistics Service's Crop Progress report, released on June 8, cotton squaring in the state of Arizona was at 35 percent, three percent above the five-year average.

San Joaquin Valley (SJV)

Spot cotton trading was inactive. Supplies and demand were light. No forward contracting was reported. Domestic mill activity was light. Average local spot prices were lower. Foreign mill inquiries were light.

Very warm temperatures and plentiful sunshine were observed in the SJV. Daytime highs were in the 90s to the 110s. Nighttime lows were in the 60s to the 80s. No moisture was reported. Heat units continued to build under the increasing summertime temperatures, providing optimal conditions for plant

development. Stands were squaring in the earliest-planted fields. Irrigation was applied. According to the National Agricultural Statistics Service's Crop Progress report, released on June 8, cotton condition in the state of California was rated as 5 percent good and 90 percent excellent.

American Pima (AP)

Spot cotton trading was slow. Supplies were moderate. Demand was light. Producer interest in forward contracting was good. Light domestic mill activity was reported. Average local spot prices were higher. Foreign mill inquiries were moderate.

Temperatures throughout the Far West ranged from daytime highs in the 90s to the 110s, with nightly lows in the 60s to the 80s. No rain was recorded during the period. Irrigation was applied in New Mexico. Pest and weed pressures were reported as light. In Arizona, stands were progressing well. Blooms were reported in fields in Yuma. The SJV crop is beginning to square. Increasing temperatures have been beneficial for pushing plant development. Fields were irrigated. Applications of pesticides were made to eliminate pests.

Save the Date: The Visalia Classing Office will host the annual American Pima Guide Box Matching on July 22, 2026.

Trading

Desert Southwest

- No trading activity was reported.

San Joaquin Valley

- No trading activity was reported.

American Pima

- A heavy volume of color 3 and better, leaf 1-3, and staple 46 and longer was sold.

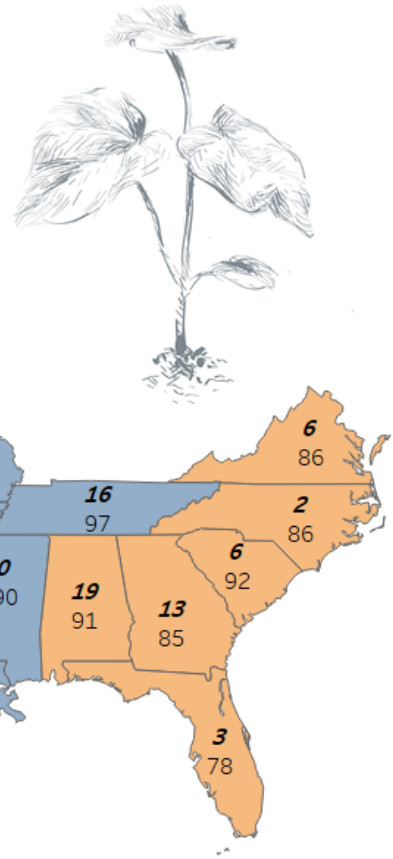
The USDA, National Agricultural Statistics Service’s Crop Progress report released on June 8, estimated that 77 percent of the U.S. upland cotton crop has been planted, 11 percent ahead of the previous week and equal to the five-year average. Additionally, 13 percent of the cotton crop was squaring, two percent ahead of the five-year average.

USDA NASS: Upland Cotton Crop Progress by State, June 8, 2026

Values in the Map:

Top Number = % Squaring

Bottom Number = % Planted



Total U.S. Upland Cotton Crop:

13 % Squaring

77 % Planted



USDA, AMS, Cotton and Tobacco Program, Market News, *Data Source: USDA, NASS, Crop Progress*

[For complete report click here.](#)

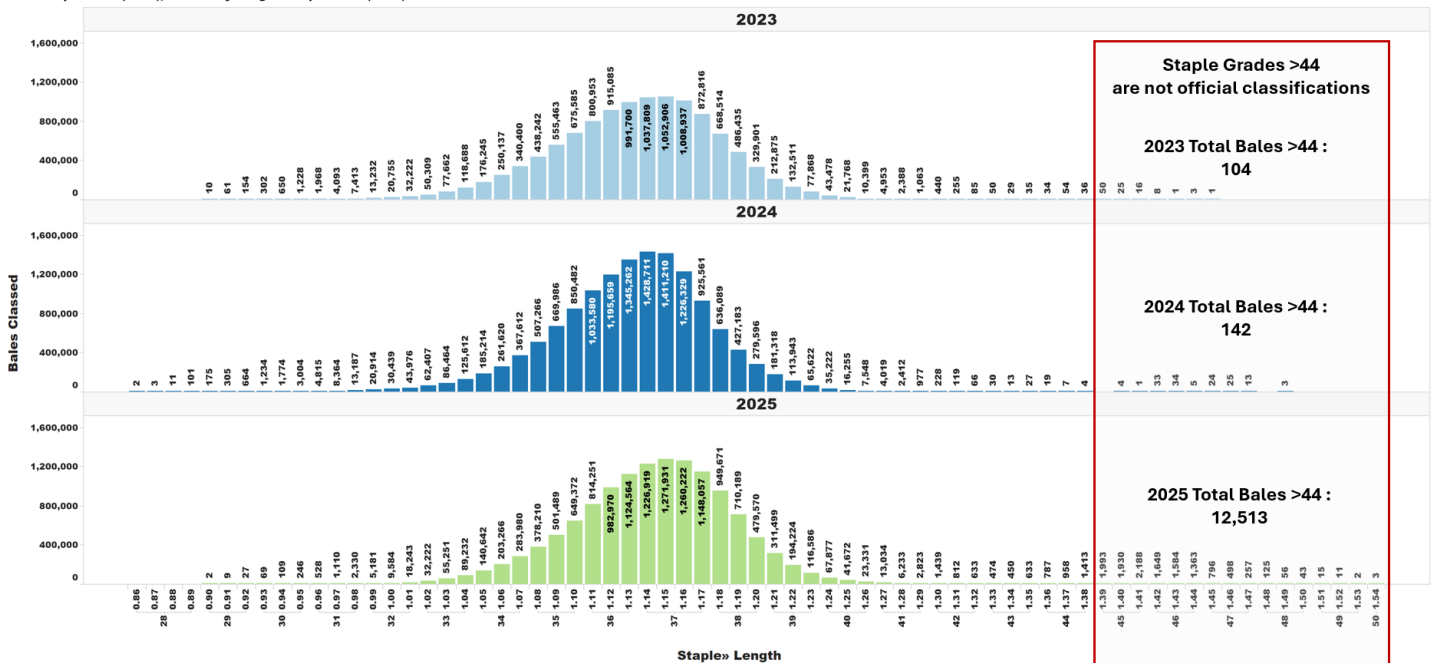
U.S. Upland Cotton Crop Staple Distribution

The official staple lengths for U.S. Upland Cotton, measured in 32nds of an inch, range from "24" to "44 & +". Currently, the longest staple included in the AMS Cotton Market News' weekly quality reports is the "40 & +" designation. Market News is in the process of updating its weekly reports to include all official staple length designations.

For more detailed information, AMS Cotton Market News posts daily per-bale quality data, which includes the instrument measurement for length in inches. You can find this data by office (<https://mymarketnews.ams.usda.gov/viewReport/3471>) and state (<https://mymarketnews.ams.usda.gov/viewReport/3472>). Using this data, Market News has calculated implied staple designations for lengths exceeding 1.35 inches. The accompanying chart shows the number of bales for each staple designation, with staples greater than "44" represented as implied staple lengths. Implied staple lengths are calculated and provided for informational purposes only and are not official designations.

Staple Distribution of U.S. Upland Cotton: 2023-2025 Crops (Classed through June 11, 2026)

Official Staple Grade (28-44), Unofficially Assigned Staple Grade (45-48)



Supply and Demand Report

The following information was excerpted from the World Agricultural Supply and Demand Estimates report, released on June 11, 2026.

June 2026

WASDE - 672 - 17

U.S. Cotton Supply and Use 1/

	2024/25	2025/26 Est.	2026/27 Proj.	2026/27 Proj.
				May Jun
Area	<i>Million Acres</i>			
Planted	11.18	9.28	9.64 *	9.64 *
Harvested	7.76	7.83	7.38 *	7.38 *
	<i>Pounds</i>			
Yield per Harvested Acre	892	852	866 *	866 *
	<i>Million 480 Pound Bales</i>			
Beginning Stocks	3.15	4.00	4.40	4.20
Production	14.41	13.90	13.30	13.30
Imports	0.00	0.01	0.01	0.01
Supply, Total	17.56	17.90	17.71	17.51
Domestic Use	1.70	1.55	1.60	1.60
Exports, Total	11.90	12.20	12.30	12.30
Use, Total	13.60	13.75	13.90	13.90
Unaccounted 2/	-0.04	-0.05	-0.10	-0.10
Ending Stocks	4.00	4.20	3.90	3.70
Avg. Farm Price 3/	63.2	63.0	73.0	73.0

Note: Reliability calculations at end of report. 1/ Upland and extra-long staple; marketing year beginning August 1. Totals may not add due to rounding. 2/ Reflects the difference between the previous season's supply less total use and ending stocks. 3/ Cents per pound for upland cotton. *Planted area as reported in March 31, 2026 Prospective Plantings. Harvested area based on 10-year average abandonment by region, with the Southwest adjusted to reflect moisture conditions. Yield based on 5-year average yields by region.

[For complete report click here.](#)

Number of Bales in Certificated Stocks

Delivery Points	Stocks as of 6-11-2026	Awaiting Review	Non-Rain Grown Cotton
Dallas/FT. Worth, TX	132,643	0	0
Galveston, TX	26,834	0	0
Greenville, SC	0	0	0
Houston, TX	33,210	0	0
Memphis, TN	12	0	0
Total	192,699	0	0

World market prices for upland cotton, in cents per pound, in effect from 12:01 a.m., EDT, Friday through midnight, EDT, Thursday

Description	2025-2026					
	May	May	May	May 29	Jun	Jun
	08-14	15-21	22-28	Jun 04	5-11	12-18
Adjusted world price 1/	69.59	71.87	68.68	63.49	63.20	61.26
Course count adjustment	0.00	0.00	0.00	0.00	0.00	0.00
Loan Deficiency Payment (LDP)	0.00	0.00	0.00	0.00	0.00	0.00
Fine count adjustment 2024	0.00	0.00	0.00	0.00	0.00	0.00
Fine count adjustment 2025	0.00	0.00	0.00	0.00	0.00	0.00

1/ Color 41, leaf 4, staple 34, mike 35-36 & 43-49, strength readings of 26.0-28.9 grams per tex, length uniformity of 80.0-81.9 percent.
Source: Farm Service Agency, USDA.

Description	2024-2025		2025-2026	
	Through June 5, 2025		Through June 4, 2026	
	Week	Mkt. Year	Week	Mkt. Year
Outstanding sales	-	2,034,800	-	2,357,500
Exports	236,300	9,550,700	300,100	9,182,800
Total export commitments	-	11,585,500	-	11,540,300
New sales	71,900	-	208,500	-
Buy-backs and cancellations	11,700	-	300	-
Net sales	60,200	-	207,000	-
Sales next marketing year	36,100	1,372,800	298,700	2,120,100

Net sales of Upland totaling 207,000 RB for 2025/2026 were up 12 percent from the previous week and 60 percent from the prior 4-week average. Increases primarily for Vietnam (83,300 RB, including 4,100 RB switched from China, 300 RB switched from Japan, and 300 RB switched from South Korea), Pakistan (57,300 RB, including 1,600 RB switched from Bahrain and decreases of 100 RB), India (35,300 RB), Indonesia (13,500 RB, including 400 RB switched from Japan and decreases of 100 RB), and Bangladesh (8,000 RB), were offset by reductions for China (5,500 RB), Bahrain (1,600 RB), South Korea (300 RB), and Japan (200 RB). Net sales of 298,700 RB for 2026/2027 were primarily for Vietnam (180,000 RB), Nicaragua (39,700 RB), Turkey (28,600 RB), Mexico (23,000 RB), and unknown destinations (13,200 RB). Exports of 300,100 RB were up 12 percent from the previous week and 3 percent from the prior 4-week average. The destinations were primarily to Vietnam (109,200 RB), Pakistan (49,400 RB), India (35,800 RB), Mexico (23,100 RB), and Bangladesh (22,300 RB). Net sales of Pima totaling 7,600 RB for 2025/2026 were up 40 percent from the previous week and 13 percent from the prior 4-week average. Increases were primarily for India (5,600 RB), Peru (1,100 RB), Djibouti (500 RB), Indonesia (200 RB), and Guatemala (200 RB). Total net sales of 100 RB for 2026/2027 were for Vietnam. Exports of 22,900 RB--a marketing-year high--were up 22 percent from the previous week and 90 percent from the prior 4-week average. The destinations were primarily to India (7,400 RB), Pakistan (5,700 RB), China (4,000 RB), Vietnam (2,300 RB), and Djibouti (1,300 RB).

Source: Export Sales Reporting Division, Foreign Agricultural Service, USDA.

June 11, 2026

NOTE: Data may not add due to rounding.

American Pima Spot Quotations

American Pima quotations are for cotton equal to the Official Standards, net weight, in mixed lots, UD Free, FOB warehouse. 1/

AMERICAN PIMA SPOT QUOTATIONS					
Color	Leaf	Staple			
		44	46	48	50
1	1	142.75	148.50	153.25	153.25
	2	142.50	148.25	153.00	153.00
	3	135.75	143.50	147.50	147.50
	4				
	5				
	6				
2	1	142.50	148.25	153.00	153.00
	2	142.25	148.00	152.75	152.75
	3	135.50	143.25	147.25	147.25
	4	125.50	133.75	137.75	137.75
	5				
	6				
3	1	134.25	142.00	146.00	146.00
	2	131.75	139.50	143.50	143.50
	3	129.50	137.25	141.25	141.25
	4	120.50	128.25	132.25	132.25
	5	104.50	111.75	115.75	115.75
	6				
4	1	115.50	123.25	128.00	128.00
	2	115.25	123.00	127.25	127.25
	3	114.00	121.75	125.75	125.75
	4	109.00	116.75	120.75	120.75
	5	97.75	105.50	109.50	109.50
	6				
5	1				
	2	92.25	102.25	105.25	105.25
	3	92.25	101.75	105.00	105.00
	4	92.25	96.25	99.25	99.25
	5	92.00	96.00	99.00	99.00
	6				
6	1				
	2	84.50	87.50	90.50	90.50
	3	84.50	87.50	90.50	90.50
	4	84.50	87.50	90.50	90.50
	5	84.25	87.25	90.25	90.25
	6	83.75	86.75	89.75	89.75

The current Pima spot quotations represent prices from local sales, export sales, and offerings last reported on June 8, 2026.

Mike	
Range	Diff.
26 & Below	-2000
27-29	-1500
30-32	-1000
33-34	-500
35 & Above	0

Strength	
(Grams per Tex)	
Range	Diff.
34.9 & Below	-1650
35.0 – 35.9	-1400
36.0 – 36.9	-1150
37.0 – 37.9	-800
38.0 – 38.9	0
39.0 – 39.9	0
40.0 & Above	0

Extraneous Matter	
Type - Level	Diff.
Prep - Level 1	-810
Prep - Level 2	-1095
Other - Level 1	-715
Other - Level 2	-1035
Plastic - Level 1	-4000
Plastic - Level 2	-4000

1/ Pima spot quotations for color-leaf-staple combinations not quoted will be included as sales of those qualities which are reported.