



# National Daily Cow and Boneless Beef Summary

Agricultural Marketing Service  
Livestock, Poultry, and Grain Market News

June 10, 2026

## Boneless Processing Beef and Beef Trimmings 100% Lean Items

LM_XB 401	National		Central		LM_XB 405	Loads	Wtd Avg	Change
	Loads	Wtd Avg	Loads	Wtd Avg				
Fresh 92-94%	0.00	0.00	0.0	0.00	Cutter Cow Carcass Cutout		360.08	(2.48)
Fresh 90%	16.8	458.25	16.0	458.28	Inside Rounds - Boxed	1.3	495.44	(3.40)
Fresh 85%	14.0	415.23	12.2	415.14	Outside Rounds	0.3	494.31	(1.31)
Fresh 81%	0.0	0.00	0.0	0.00	Eye of Rounds	1.2	504.28	(0.10)
Fresh 65%	8.7	246.89	7.6	247.95	Flats and Eyes - Combc	3.0	513.13	0.60
Fresh 50%	9.5	183.60			Striploins	3.5	681.15	6.15
					S.P.B. - Combo	2.9	557.89	(0.50)

## Ground Beef

LM_XB 403	Loads	Wtd Avg	Steer/Heifer/Cow Ground Beef	
Fresh 73%	1.1	368.76		
Fresh 81%	4.9	407.49		
Fresh 93%	1.1	539.51		
Ground Chuck	1.3	421.40		
Ground Round	0.1	467.47		
Ground Sirloin				

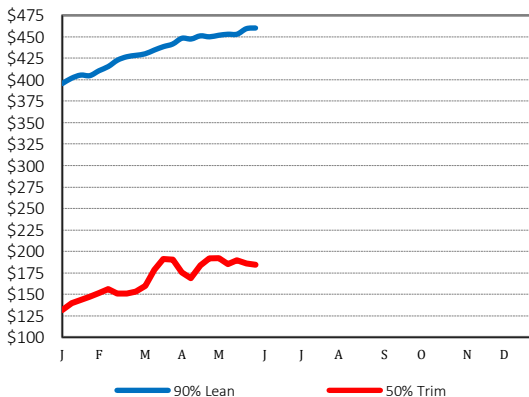
  

	Loads	Wtd Avg
Fresh 81%	0.0	0.00
Fresh 93%		
Ground Chuck		

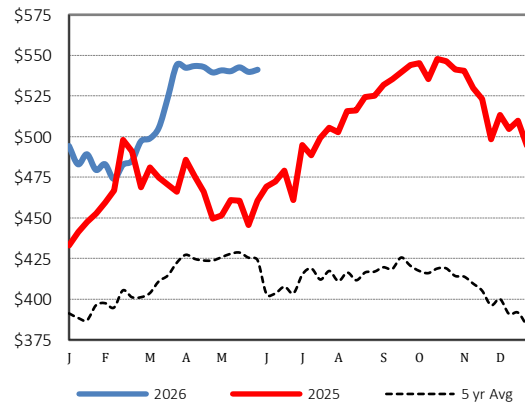
## Daily Estimated Slaughter Daily Cow and Bull Bids

SJ_LS 710	Daily Estimated Slaughter		LM_CT 138	Daily Cow and Bull Bids	
Today (est)		105,000	National	Low	High
Week Ago (est)		106,000	Breaker	291.00	319.00
Year Ago (act)		110,517	Boner	296.00	360.00
Week to Date (est)		316,000	Lean	287.00	365.00
Same Period Last Week (est)		320,000	Bulls	300.00	385.00
Same Period Last Year (act)		340,480	Northwest	Low	High
Previous Day Est	Steer and Heifer	89,000	Breaker	291.00	305.00
	Cow and Bull	20,000	Boner	296.00	323.00
			Lean	287.00	340.00
			Bulls	314.00	363.00

## 2026 90% Lean vs 50% Lean



## 100% Lean Inside Rounds



Des Moines, Iowa | 515-284-4460 | [dsm.lpgmn@ams.usda.gov](mailto:dsm.lpgmn@ams.usda.gov)

[www.ams.usda.gov/LPSMarketNewsPage](http://www.ams.usda.gov/LPSMarketNewsPage)