

DAIRY MARKET NEWS AT A GLANCE

CME GROUP CASH MARKETS (5/29)

BUTTER: Grade AA closed at \$1.6675. The weekly average for Grade AA is \$1.6206 (+0.0506).

CHEESE: Barrels closed at \$1.4400 and 40# blocks at \$1.4750. The weekly average for barrels is \$1.4475 (-0.0615) and blocks \$1.4881 (-0.0524).

NONFAT DRY MILK: Grade A closed at \$2.0900. The weekly average for Grade A is \$2.0775 (-0.1025).

DRY WHEY: Extra grade dry whey closed at \$0.7000. The weekly average for dry whey is \$0.6913 (+0.0053).

BUTTER HIGHLIGHTS: Stakeholders throughout the country report steady domestic butter demand. Demand from international buyers is mixed. Contractual cream obligations are being met. Spot loads continue to be available as well. Some butter manufacturers are bringing spot loads of cream into their production facilities. Butter production schedules are strong. Some butter makers are putting a heavy focus on 82 percent butterfat butter. Butter manufacturers indicate inventories vary from stable to building. Bulk butter overages range from 4 cents below to 5 cents above market across all regions.

CHEESE HIGHLIGHTS: Northeast cheese production is steady. Retail demand is stabilizing, bulk demand is mixed, inventories are balanced, and the market tone is steady, supported by consistent domestic buying. Central region cheese plants are running busy schedules. Spot cheese is available. Domestic demand is steady to higher, food service sales remain light, and exports are steady. Although spot milk is widely available, demand from Western cheesemakers is mixed. Post-holiday output is stronger, though some manufacturers remain tight on spot cheese loads. Domestic demand is steady, with retail outpacing food service. Strong international interest is facing slow negotiations.

FLUID MILK HIGHLIGHTS: Milk production varies throughout the country. In the Northeast, output is near peak levels for spring flush, but output is declining in the Southeast, California, and Colorado. Class I demand is declining as educational institutions head toward summer break. Contacts in the East region report some Class I milk is being diverted to Class III processors. Strong demand from ice cream makers is contributing to increased Class II demand. Cream production is strong in the Central region, and contacts in the West report steady demand. In the East, condensed skim milk demand is good, while inventories are limited. All Class cream multiples range from 1.05 – 1.40 in the East, 1.05 – 1.27 in the Midwest, and 1.00 – 1.20 in the West.

DRY PRODUCTS HIGHLIGHTS: Nonfat dry milk prices declined this week across all regions and heat levels, with the most significant decreases occurring at the lower end of the price ranges for all heat levels in the Central and East regions. Dry buttermilk prices were steady in the Central and East regions. In the West, the bottom of the price series was unchanged while the top moved slightly higher. Dry whey prices were mixed, as the lower end of the Central region price range inched up and the remainder held steady. The West region saw declines across the board, and the East region was unchanged. Lactose prices increased at both ends of the range, while the mostly range held steady. Whey protein concentrate (WPC) 34% prices were firm at the lower end and rose at the top of the price range, while the mostly range moved higher. Dry whole milk prices narrowed this week as the lower end of the range strengthened and the upper end eased. Acid and rennet casein prices posted significant gains, particularly at the upper ends of their respective ranges.

ORGANIC DAIRY MARKET NEWS: The Transition to Organic Partnership Program (TOPP) was formed through cooperative agreements between the USDA and non-profit organizations to provide technical assistance and support for transitioning and existing organic farmers. A calendar of events held by partner organizations can be found at the following link: <https://www.organictransition.org/events/>. European organic milk average pay prices for March 2026 decreased in Austria, France, Germany, and Bavaria compared to January. The average pay price in March 2026 was up from a year ago in France, Germany, and Bavaria, but was down in Austria. A large Dutch organic milk processor announced the guaranteed price for organic farm milk in June 2026 is 61.75 EUR/100kg (\$71.94 USD), unchanged from May 2026. A cooperative announced their June organic milk pay price is unchanged in the UK, 56.31 pence per liter (ppl), \$0.76 USD. The stated organic demand is strong in the UK, but supply is currently outpacing demand.

APRIL MILK PRODUCTION (NASS): Milk production in the 24 major States during April totaled 19.2 billion pounds, up 2.8 percent from April 2025. March revised production, at 19.7 billion pounds, was up 2.8 percent from March 2025. The March revision represented an increase of 71 million pounds or 0.4 percent from last month's preliminary production estimate.

CONTINUED ON PAGE 1A

TABLE OF CONTENTS

Product Highlights/CME/DMN at a Glance	1	Dry Whey/WPC 34%/Lactose/Casein	6	April Market Summary and Utilization	11
Weekly CME Cash Trading/Butter Markets	2	U.S Dairy Cow Slaughter/Class Milk Prices/NDPSR/Futures	7	Dairy Graphs	G1
Cheese Markets	3	Organic Dairy Market News	8	Weekly Grocery Store Activity	
Fluid Milk and Cream	4	April Milk Production	9	Dairy Market News Contacts	
Nonfat Dry Milk/Dry Buttermilk/Dry Whole Milk	5	April Cold Storage	10		

DAIRY MARKET NEWS PRICE SUMMARY FOR MAY 25 - 29, 2026
PRICES (\$/LB) & CHANGES FROM PREVIOUS PUBLISHED PRICES

Commodity	Range		Mostly		Commodity	Range		Mostly	
NDM					BUTTERMILK				
Central Low/Med. Heat	1.9500	2.3300	2.1000	2.2200	Central/East	1.7700	1.8900		
Change	-0.2700	-0.0700	-0.1500	-0.0800	Change	N.C.	N.C.		
Central High Heat	2.1000	2.4000			West	1.7800	1.9200	1.8000	1.9000
Change	-0.2700	-0.0300			Change	N.C.	0.0100	N.C.	0.0100
West Low/Med. Heat	2.1000	2.3000	2.1400	2.2400	WHEY				
Change	-0.0500	-0.0800	-0.0800	-0.0900	Central	0.5900	0.7100	0.6000	0.6800
West High Heat	2.3000	2.4000			Change	0.0100	N.C.	N.C.	N.C.
Change	-0.0400	-0.0325			West	0.6400	0.7800	0.6600	0.7200
DRY WHOLE MILK					Change	-0.0200	-0.0200	-0.0200	-0.0200
National	2.2500	2.6000			Northeast	0.6000	0.6800		
Change	0.1000	-0.0500			Change	N.C.	N.C.		
					LACTOSE				
					Central/West	0.4600	0.7200	0.5500	0.6300
					Change	0.0100	0.0200	N.C.	N.C.
					WPC 34%				
					Central/West	1.6300	2.0400	1.7500	1.8500
					Change	N.C.	0.0400	0.0500	0.0500
					CASEIN				
					Rennet	3.9000	4.9000		
					Change	0.0500	0.1500		
					Acid	4.0000	4.7500		
					Change	0.1000	0.1500		
					ANIMAL FEED WHEY				
					Central	0.3500	0.3800		
					Change	N.C.	0.0100		

CONTINUED FROM PAGE 1

APRIL COLD STORAGE (NASS): Total natural cheese stocks in refrigerated warehouses on April 30, 2026 were up 1 percent from the previous month and down 1 percent from April 30, 2025. Butter stocks were up 6 percent from last month and down 9 percent from a year ago.

APRIL MARKET SUMMARY AND UTILIZATION: During April, 12.6 billion pounds of milk were received from Federally pooled producers. This volume of milk is 13.4 percent lower than the 2025 volume. Regulated handlers pooled 3.3 billion pounds of producer milk as Class I products, up 1.0 percent when compared to the previous year. The all-market average Class utilization percentages were: Class I = 26%, Class II = 14%, Class III = 54%, Class IV = 6%. The weighted average statistical uniform price was \$19.11 per cwt, \$1.21 higher than last month and \$0.25 higher than last year.

WEEKLY GROCERY STORE ACTIVITY: Conventional dairy advertisements are up 16 percent, and organic dairy ads increased 30 percent in week 22. The only conventional dairy commodity that appeared in fewer ads this week is butter. The most advertised conventional commodity is cheese, and milk is the most advertised commodity in the organic aisle.

COMMODITY	MONDAY May 25	TUESDAY May 26	WEDNESDAY May 27	THURSDAY May 28	FRIDAY May 29	WEEKLY CHANGE	WEEKLY AVERAGE
CHEESE BARRELS	No Trading	1.4700 (-0.0100)	1.4400 (-0.0300)	1.4400 (N.C.)	1.4400 (N.C.)	(-0.0400)	1.4475 (-0.0615)
40 POUND BLOCKS	No Trading	1.4925 (-0.0125)	1.4975 (+0.0050)	1.4875 (-0.0100)	1.4750 (-0.0125)	(-0.0300)	1.4881 (-0.0524)
NONFAT DRY MILK GRADE A	No Trading	2.0425 (-0.0300)	2.0925 (+0.0500)	2.0850 (-0.0075)	2.0900 (+0.0050)	(+0.0175)	2.0775 (-0.1025)
BUTTER GRADE AA	No Trading	1.5600 (+0.0250)	1.6200 (+0.0600)	1.6350 (+0.0150)	1.6675 (+0.0325)	(+0.1325)	1.6206 (+0.0506)
DRY WHEY EXTRA GRADE	No Trading	0.6850 (+0.0050)	0.6900 (+0.0050)	0.6900 (N.C.)	0.7000 (+0.0100)	(+0.0200)	0.6913 (+0.0053)

Prices are USD per lb. in carlot quantities. Carlot unit weights: Cheese, 40,000-44,000 lbs.; Nonfat Dry Milk, 41,000-45,000 lbs.; Butter, 40,000-43,000 lbs.; Dry Whey, 41,000-45,000 lbs. Weekly Change is the sum of daily price changes. Weekly Average is the simple average of the daily close prices for the calendar week. Weekly Average Change is the difference between current and previous Weekly Average. Computed by Dairy Market News for informational purposes.

Five days of trading information can be found at <https://www.cmegroup.com/trading/agricultural/spot-call-data.html>

BUTTER

EAST

Butter churns remain operating seven days a week as cream supplies continue to support full production schedules. Cream is readily available in the region, and contacts report seeing cream multiples in the low 1.20s. The spring flush is peaking in the Eastern region, and the East Coast is entering the height of seasonal cream diversion into Class II ice cream production. Retail butter demand, which softened following a consumer demand shock in April, appears to be steady again according to contacts. Inventories and the market tone are steady.

All First Sales, F.O.B., Grade AA, Conventional, and Edible Butter
Bulk Basis Pricing - 80% Butterfat \$/LB: -0.0200 – +0.0500

WEST

Butter manufacturers in the West are receiving contract loads of cream. Spot loads of cream are available. Demand from butter manufacturers is mixed. Butter production schedules are strong for week 22. Some manufacturers are putting a heavy focus on 82 percent butterfat butter. Stakeholders indicate 82 percent butterfat butter prices are holding more price strength than 80 percent butterfat butter loads. Spot loads of butter are available. Butter manufacturers report inventories vary from stable to increasing. Demand from domestic and international buyers is steady.

All First Sales, F.O.B., Grade AA, Conventional, and Edible Butter
Bulk Basis Pricing - 80% Butterfat \$/LB: -0.0300 – +0.0350

CENTRAL

Milk output is strong in the Central region and cream production is steady. Class II processors continue to pull on cream inventories, keeping spot volumes available but somewhat snug. Some butter makers in the Southwest are bringing in cream from other regions to keep churns active. Some butter makers had downtime early in the week for the holiday but say they are running full schedules going forward. Domestic butter demand is steady. Export interest varies, as some contacts say they are having success moving loads to other countries, while others report softening demand. Spot loads of butter are available, but 82 percent and unsalted butter inventories are tighter than 80 percent salted.

All First Sales, F.O.B., Grade AA, Conventional, and Edible Butter
Bulk Basis Pricing - 80% Butterfat \$/LB: -0.0400 – +0.0200

CHEESE

EAST

Cheese production across the region remains steady, as Class III milk supplies are abundant during the Northeast spring flush. Plants are able to maintain consistent production schedules. Cheese demand in the retail sector is stabilizing following the demand shift in April. Retail movement is recovering, with grocers reporting purchasing patterns largely returning to typical levels. Bulk demand is mixed; fulfilling spot bulk orders is primarily done through the existing domestic customer base, leaving no excess product availability for export. Contacts describe inventories as balanced. Market participants characterize the overall tone as steady, supported by stable domestic demand.

CENTRAL

Milk output is strong in the Central region, but contacts say busy production schedules are keeping spot volumes from becoming excessive. Class III spot milk prices range from \$5-under to \$2-over as of report publication. Cheesemakers are running busy schedules following the long holiday weekend. Some plant managers say they bought Class III milk from processors with downtime this week, near the bottom of the range, while others say lighter spot availability is keeping prices steady. Spot purchasers say plenty of cheese is available in the region. Domestic demand is steady to higher, as some contacts report increased retail demand, but note that food service sales remain light. Export cheese demand is steady.

WEST

Cheese manufacturers in the West report contractual milk intake needs are being met. Spot milk availability varies throughout the region. Demand from cheese manufacturers for spot milk is mixed. Cheese production schedules are stronger following the holiday weekend, but some manufacturers remain tight on spot loads. Traders indicate spot cheese loads are available. Domestic demand is steady. The retail sector continues to outpace the food service sector. Demand from international buyers is strong, but some sellers report trades are not being negotiated quickly.

FOREIGN

Retail demand for foreign type cheese is strong. Food service demand for foreign type cheese is steady. Buyers in southern Europe continue to secure loads to meet increasing needs with summer travel approaching. Export demand is stable, but sellers note it is challenging to negotiate due to additional costs that are resulting from continuing global disruptions. European milk production varies from steady to lighter as summer temperatures take more of a hold, but is generally up year over year. European cheese production schedules are stable. Spot loads are available, but not in abundance. Industry sources report prices are stable. According to CLAL.it data, the price difference between European produced cheese and U.S. produced cheese is narrowing.

COLD STORAGE

Date/Change	Butter	Cheese
05/25/2026:	61,815	85,545
05/01/2026:	61,358	86,957
Change:	457	(1,412)
% Change:	1	(2)

FLUID MILK AND CREAM

Prices represent carlot/trucklot quantities for domestic and export sales packaged in 25 kg. or 50 lb. bags, or totes, spray process, dollars per pound.

EAST

Milk production in the Northeast remains near peak spring flush levels, while the Southeast flush season has concluded. Class I orders in the Northeast and New York are tapering off with the onset of summer break. The Midwest and Southeast have earlier summer break dates. Surplus Class I milk is being diverted to Class III cheese plants, Class IV butter and powder operations, and balancing facilities. Class II cream demand is strong as ice cream production peaks, with cream cheese and yogurt demand remaining steady. Industry contacts report Class III milk supplies are sufficient for ongoing cheese production. Contracted cream supplies are adequate for butter plants operating seven days a week, although few butter manufacturers are accepting spot cream. Offers for excess spot cream are slow.

Condensed skim demand is good, availability is limited and offers are above both Class II and Class III prices.

Northeastern U.S., F.O.B. Condensed Skim
 Price Range - Class II, \$/LB Solids: 1.79 – 2.02
 Price Range - Class III, \$/LB Solids: 1.38 – 1.68

Northeastern U.S., F.O.B. Cream
 Price Range - All Classes, \$/LB Butterfat: 1.6485 – 2.1980
 Multiples Range - All Classes: 1.0500 – 1.4000
 Price Range - Class II, \$/LB Butterfat: 2.0410 – 2.1980
 Multiples Range - Class II: 1.3000 – 1.4000

CENTRAL

Milk output is steady in the Central region. Class I demand is softening, as more educational institutions are heading to summer break. Class II demand is strong, and contacts say ice cream makers continue to ramp up schedules as summer grows near. Cheese production is lighter this week, due to Monday's holiday, but plant managers say they ran busy schedules the rest of the week. Class III spot milk prices are up slightly from last week, ranging from \$5-under to \$2-over Class. Some cheesemakers say they are purchasing additional spot milk to maintain full schedules, while others are securing loads from nearby plants with downtime at below Class prices. Demand is strong from Class IV processors. Cream production is steady in the region but remains strong compared to last year. Contacts say Class II processors continue to pull on cream inventories. Butter makers are running busy schedules, and some plant managers are securing cream from other regions to keep churns active.

Price Range - Class III Milk; \$/CWT; Spot Basis: -5.00 – 2.00
 Trade Activity: Moderate

Midwestern U.S., F.O.B. Cream
 Price Range - All Classes; \$/LB Butterfat: 1.6485 – 1.9939
 Multiples Range - All Classes: 1.0500 – 1.2700
 Price Range - Class II, \$/LB Butterfat: 1.7741 – 1.9939
 Multiples Range - Class II: 1.1300 – 1.2700

WEST

California handlers report steady or lighter milk production for week 22. Milk production is down from the previous month, but up year-over-year. Central Valley stakeholders report balanced milk volumes. Although some manufacturers indicate milk intakes below anticipated volumes, spot milk loads are available for buyers to secure. Arizona and New Mexico farm level milk output is steady. Spot milk loads are somewhat tight. Pacific Northwest milk production is steady. Manufacturers indicate milk volumes are tight. Handlers in the Mountain States of Idaho and Utah report close to ideal temperatures for cow comfort and steady farm level milk output. Handlers in Colorado indicate farm level milk output varies from steady to lighter. In many areas of the West region snowpacks were not heavy and stakeholders voiced nervousness about water resources for the remainder of this year. Some stakeholders throughout the region report increasing milk hauling rates. Class I demand is lighter with the start of summer breaks at educational institutions. Class II, III, and IV demands are steady. Cream demand and availability are steady. Cream multiples are unchanged for week 22. Condensed skim milk availability and demand are unchanged.

Western U.S., F.O.B. Cream
 Price Range - All Classes, \$/LB Butterfat: 1.5700 – 1.8840
 Multiples Range - All Classes: 1.0000 – 1.2000
 Price Range - Class II, \$/LB Butterfat: 1.7427 – 1.8840
 Multiples Range - Class II: 1.1100 – 1.2000

NONFAT DRY MILK, BUTTERMILK, & DRY WHOLE MILK

Prices represent carlot/trucklot quantities for domestic and export sales packaged in 25 kg. or 50 lb. bags, or totes, spray process, dollars per pound

NONFAT DRY MILK - CENTRAL AND EAST

Low/medium heat nonfat dry milk (NDM) prices decreased across the range and mostly price series in the Central and East regions this week. On the CME, daily spot prices for NDM fell from \$2.27 at the start of last week, to \$2.0850, as of report publication. Contacts say inventories are still somewhat snug, but they are growing and loads of NDM are available in the West region. Demand for low/medium heat NDM remains soft, as some domestic spot purchasers are only ordering loads to meet their immediate needs. Export demand is softening as contacts say purchasers in Mexico are buying fewer loads. Low/medium heat NDM production is strong, and plant managers say they are running busy schedules this week. High heat NDM prices also decreased this week, following low/medium heat. Despite lower prices, contacts say inventories remain tight and demand is unchanged.

Price Range - Low & Medium Heat: 1.9500 – 2.3300
 Mostly Range - Low & Medium Heat: 2.1000 – 2.2200
 Price Range - High Heat: 2.1000 – 2.4000

NONFAT DRY MILK - WEST

Low/medium heat nonfat dry milk (NDM) prices decreased at both ends of the range and mostly price series in the West. Stakeholder sentiments are somewhat bearish this week and buyers again pushed back on prices. Domestic demand varies from steady to lighter. Demand from international buyers is steady. Production schedules are steady. Many manufacturers continue to give open drying time to NDM production over dry buttermilk production. NDM spot load availability is somewhat tight. High heat NDM prices decreased as well. Demand is moderate. Production schedules are mixed.

Price Range - Low & Medium Heat: 2.1000 – 2.3000
 Mostly Range – Low & Medium Heat: 2.1400 – 2.2400
 Price Range - High Heat: 2.3000 – 2.4000

DRY BUTTERMILK - CENTRAL AND EAST

Buttermilk powder (BMP) inventories remain tight in the Central and East regions. Contacts report limited trading, resulting in no changes this week to the price range. Manufacturers have recently focused on nonfat dry milk production, with BMP output sufficient to meet contractual commitments. The recent correction in the nonfat dry milk price has significantly narrowed the gap between its price and BMP quotes. Butter churns remain active throughout the week, ensuring a steady supply of liquid buttermilk for drying and supporting market availability.

Price Range: 1.7700 – 1.8900

DRY BUTTERMILK - WEST

Dry buttermilk prices increased one cent at the top of the range and mostly price series in the West. The bottom of the range and mostly price series are unchanged. Domestic demand varies from steady to lighter. Demand from international buyers is steady. Liquid buttermilk is available for drying with butter churns strongly active. Dry buttermilk production schedules are steady. However, nonfat dry milk production continues to press against open drying time for liquid buttermilk volumes. Dry buttermilk availability is somewhat tight.

Price Range: 1.7800 – 1.9200
 Mostly Range: 1.8000 – 1.9000

DRY WHOLE MILK

Dry whole milk (DWM) prices narrowed this week as the lower end of the range strengthened and the upper end eased, with overall values remaining above year-ago levels. Demand is steady, supported by brand specific sales continuing to command premiums and confectioners beginning to ramp up activity. Other contacts note recent orders have been in smaller volumes. Inventories remain manageable, and the market tone is steady. A northwestern plant is expected to boost DWM production soon, which could influence availability in the weeks ahead.

Price Range – 26% Butterfat: 2.2500 – 2.6000

WHEY, WPC 34%, LACTOSE, & CASEIN

Prices represent carlot/trucklot quantities for domestic and export sales packaged in 25 kg. or 50 lb. bags, or totes, spray process, dollars per pound.

DRY WHEY– CENTRAL

Dry whey prices are unchanged at the top of the range and across the mostly price series in the Central region. The only movement with prices this week is a 1 cent increase at the bottom of the range. Contacts say domestic dry whey demand is unchanged from recent weeks. They note interest is strong for some brands with tight inventories, but demand is lighter for others with spot loads available. Export demand is strong, though international purchasers are primarily sticking to some preferred brands. Dry whey production is steady but remains limited as some manufacturers are focused on higher whey protein concentrates. The top of the animal feed whey price range increased this week, while the bottom is unchanged. Demand remains light, inventories are tight, and production is limited.

Price Range - Animal Feed:	0.3500 – 0.3800
Price Range – Non-Hygroscopic:	0.5900 – 0.7100
Mostly Range – Non-Hygroscopic:	0.6000 – 0.6800

DRY WHEY– EAST

Dry whey production in the East region remains stable. The price range is staying consistent, with CME and NDPSR values holding steady over recent weeks. NDPSR data show modest week-over-week declines in sales. Spot quantities are easily accessible. Producers continue making Extra Grade and Grade A whey but are focused on whey protein concentrate and whey protein isolate, which command premium prices. European interest remains steady due to U.S. price competitiveness.

Price Range – Non-Hygroscopic:	0.6000 – 0.6800
--------------------------------	-----------------

DRY WHEY– WEST

Dry whey prices decreased two cents at both ends of the range and mostly price series in the West. Demand from domestic and international buyers is steady. Spot load availability is not abundant and variable depending on manufacturer. Cheese production is providing sufficient liquid whey volumes for drying. Dry whey production schedules are stable, while higher whey protein commodities remain a bigger focus for many manufacturers.

Price Range – Non-Hygroscopic:	0.6400 – 0.7800
Mostly Range – Non-Hygroscopic:	0.6600 – 0.7200

WHEY PROTEIN CONCENTRATE

Whey protein concentrate (WPC) 34% prices were steady to stronger, with prices holding firm at the lower end and strengthening at the top of the price range, while the mostly range also moved higher. Production remains limited and inventories are extremely tight, leaving little spot trading available. Demand is strong domestically and improving in export channels, including solid interest from Argentina. Contacts report feed buyers paying about \$1.90. The market tone is firm given tight availability and robust demand, though softer nonfat dry milk prices could eventually pressure WPC 34% values. WPC 80% offers were reported near \$13.00.

Price Range - 34% Protein:	1.6300 – 2.0400
Mostly Range - 34% Protein:	1.7500 – 1.8500

LACTOSE

Lactose prices moved higher at both ends of the price range, while the mostly range held steady. Prices are supported by very strong demand and extremely tight spot availability. Contacts report receiving more inquiries than they have had in years and inventories remain difficult to source, particularly for 200-mesh. Some contacts note not receiving any spot offers for weeks. Production is generally steady, but most output is committed to contracts, keeping near-term supply constrained. Q3 contracts span from the upper \$0.50s to \$0.70. Overall, the market tone is firm.

Price Range - Non Pharmaceutical:	0.4600 – 0.7200
Mostly Range - Non Pharmaceutical:	0.5500 – 0.6300

CASEIN

Prices for acid casein increased across the range this week. Contacts in Oceania report steady demand within in the region and say interest from purchasers in other countries remains strong. Milk output is declining in Oceania, contributing to lighter acid casein production. Spot purchasers say inventories are tightening.

Rennet casein prices also increased across the range this week. Contacts in Europe report lighter production of rennet casein in recent weeks has contributed to some tightness in the spot markets. Plant managers say they are primarily focusing on fulfilling contractual obligations and bringing few loads to the spot market. Due to this, spot inventories remain tight in Europe. Demand for rennet casein is strong.

Acid Casein Price Range:	4.0000 – 4.7500
Rennet Casein Price Range:	3.9000 – 4.9000

U.S. Dairy Cow Slaughter (1000 head) under Federal Inspection

WEEK ENDING	2026 WEEKLY DAIRY COWS	2026 CUMULATIVE DAIRY COWS	2025 WEEKLY DAIRY COWS	2025 CUMULATIVE DAIRY COWS
5/16/2026	44.5	1,072.6	44.8	1,017.9

WEBSITE: http://www.ams.usda.gov/mnreports/ams_3658.pdf

SOURCE: The slaughter data are gathered and tabulated in a cooperative effort by the Agricultural Marketing Service, the Food Safety and Inspection Service, and the National Agricultural Statistics Service, all of USDA

FEDERAL MILK ORDER CLASS III MILK PRICES (3.5% Butterfat)

YEAR	JAN	FEB	MAR	APR	MAY	JUN	JUL	AUG	SEP	OCT	NOV	DEC
2021	16.04	15.75	16.15	17.67	18.96	17.21	16.49	15.95	16.53	17.83	18.03	18.36
2022	20.38	20.91	22.45	24.42	25.21	24.33	22.52	20.10	19.82	21.81	21.01	20.50
2023	19.43	17.78	18.10	18.52	16.11	14.91	13.77	17.19	18.39	16.84	17.15	16.04
2024	15.17	16.08	16.34	15.50	18.55	19.87	19.79	20.66	23.34	22.85	19.95	18.62
2025	20.34	20.18	18.62	17.48	18.57	18.82	17.32	17.24	17.59	16.91	17.18	15.86

FEDERAL MILK ORDER CLASS IV MILK PRICES (3.5% Butterfat)

YEAR	JAN	FEB	MAR	APR	MAY	JUN	JUL	AUG	SEP	OCT	NOV	DEC
2021	13.75	13.19	14.18	15.42	16.16	16.35	16.00	15.92	16.36	17.04	18.79	19.88
2022	23.09	24.00	24.82	25.31	24.99	25.83	25.79	24.81	24.63	24.96	23.30	22.12
2023	20.01	18.86	18.38	17.95	18.10	18.26	18.26	18.91	19.09	21.49	20.87	19.23
2024	19.39	19.85	20.09	20.11	20.50	21.08	21.31	21.58	22.29	20.90	21.12	20.74
2025	20.73	19.90	18.21	17.92	18.13	18.30	18.89	18.50	16.17	14.30	13.89	13.64

FEDERAL MILK ORDER CLASS PRICES FOR 2026 (3.5% Butterfat)

CLASS	JAN	FEB	MAR	APR	MAY	JUN	JUL	AUG	SEP	OCT	NOV	DEC
I (BASE)	16.35	14.70	15.47	18.66	20.15	22.18						
II	13.92	15.34	17.34	18.82								
III	14.59	14.94	16.16	16.82								
IV	13.55	16.29	18.94	20.22								

Further information may be found at: <https://www.ams.usda.gov/rules-regulations/mmr/dmr>

**NATIONAL DAIRY PRODUCTS SALES REPORT
U.S. AVERAGES AND TOTAL POUNDS**

WEEK ENDING	BUTTER	CHEESE – 40 LB BLOCKS	DRY WHEY	NDM
5/23/2026	1,6200 2,831,326	1,6662 9,208,026	0,6350 9,533,627	2,1281 19,182,349

Further data and revisions may be found on the internet at: <http://www.ams.usda.gov/rules-regulations/mmr/dmr>

**CME GROUP, INC FUTURES
Selected closing prices**

CLASS III MILK FUTURES (Pit-Traded) (\$/cwt)

DATE	5/22	5/25	5/26	5/27	5/28
MAY 26	16.92	Closed	16.91	16.90	16.90
JUN 26	16.57	No	16.60	16.52	16.35
JUL 26	16.65	Trading	16.61	16.69	16.71

NONFAT DRY MILK FUTURES (Pit-Traded) (¢/lb)

DATE	5/22	5/25	5/26	5/27	5/28
MAY 26	207.975	Closed	207.725	208.875	208.850
JUN 26	199.975	No	196.500	203.000	204.800
JUL 26	178.850	Trading	173.225	181.225	185.000

CLASS IV MILK FUTURES (Pit-Traded) (\$/cwt)

DATE	5/22	5/25	5/26	5/27	5/28
MAY 26	22.34	Closed	22.34	22.36	22.36
JUN 26	21.18	No	21.00	21.68	21.80
JUL 26	19.50	Trading	19.16	19.87	20.30

DRY WHEY FUTURES (Electronic-Traded) (¢/lb)

DATE	5/22	5/25	5/26	5/27	5/28
MAY 26	64.000	Closed	64.000	64.000	64.000
JUN 26	64.975	No	65.000	65.400	65.400
JUL 26	65.250	Trading	65.975	66.850	66.850

CASH SETTLED BUTTER FUTURES (Electronic-Traded) (¢/lb)

DATE	5/22	5/25	5/26	5/27	5/28
MAY 26	164.475	Closed	164.475	164.475	164.000
JUN 26	155.950	No	157.000	159.000	161.000
JUL 26	159.600	Trading	160.050	163.975	167.250

CASH-SETTLED CHEESE FUTURES (Electronic-Traded) (\$/lb)

DATE	5/22	5/25	5/26	5/27	5/28
MAY 26	1.658	Closed	1.656	1.655	1.655
JUN 26	1.617	No	1.622	1.607	1.595
JUL 26	1.627	Trading	1.618	1.621	1.622

Further information may be found at: <https://www.cmegroup.com/markets/agriculture/dairy.html>

ORGANIC DAIRY MARKET NEWS

Information gathered May 18 – 29, 2026.

ORGANIC DAIRY MARKET OVERVIEW

The Transition to Organic Partnership Program (TOPP) was formed through cooperative agreements between the USDA and non-profit organizations to provide technical assistance and support for transitioning and existing organic farmers. A calendar of events held by partner organizations can be found at the following link:

<https://www.organictransition.org/events/>

A selection of upcoming events is included below:

MGA's Integrating Organic Grains, Virtual - May 30
 NOFA-NJ's Farm Equipment, Pennington, NJ - Jun 1
 CFSA Weed Management Field Day, Greensboro, NC - Jun 2
 MGA's Grow Your Own Nitrogen with Rye, Virtual - Jun 3
 NOFA-NY CRAFT Tour, Riverhead, NY - Jun 3
 CBN's Winter Cereal & Cover Crops, Corvallis - Jun 5
 UMaine's Mid-Coast Field Day, Hope, ME
 NOFA-NJ's Organic Certification, Asbury, NJ - Jun 9
 Glynwood's Soil Science & Testing, Cold Spring, NY - Jun 10
 NOFA-NY Island Time Farm Potluck, Shelter Island, NY - Jun 10
 NOFA/Mass Building a Viable, Healthy Farm, Pepperell, MA - Jun 11
 ISU's Iowa Farm & Food Conference, Waterloo, IA - Jun 11-12
 Land Connection's Organic Certification, Virtual, Jun 12

The USDA AMS National Organic Program (NOP) provides an email notification service, the Organic Insider, to send out updates to the organic community. The NOP Organic Insider from May 27th announced a new Oversight and Enforcement Update which will release periodically to highlight the NOP's work. The Strengthening Organic Enforcement Final Rule was Implemented in March 2024 to protect organic integrity, and this rule required additional import certificates which help to identify organic fraud. This issue of the organic insider provides information regarding these certificates, including the exports and imports of organic products.

To read more from the Organic Insider, view archives, or register to receive updates by email visit:

<https://www.ams.gov/reports/organic-insider>

ORGANIC DAIRY FLUID OVERVIEW

Federal Milk Market Order 1, in the Northeast, reports utilization of types of organic milk by regulated plants. During April 2026, organic whole milk utilization totaled 18.96 million pounds, down from 20.26 million pounds the previous year. The butterfat content, 3.29 percent, is down from 3.32 a year ago. The utilization of organic reduced fat milk, 14.73 million pounds, decreased from 15.59 million pounds a year ago. The butterfat content, 1.54 percent, is up from 1.49 percent last year.

European organic milk average pay prices for March 2026 decreased in Austria, France, Germany, and Bavaria compared to January. The average pay price in March 2026 was up from a year ago in France, Germany, and Bavaria, but was down in Austria.

Organic Milk Pay Prices in Europe**March 2026**

Country	Euros/100KG	*(USD/100KG)	% Change	
			Feb 2026	Mar 2025
Austria (1)	53.78	\$61.39	-2.85	-10.41
Austria (2)	60.52	\$69.09	-2.07	-7.80
Germany	64.98	\$74.18	-0.63	+1.47
Bavaria	65.08	\$74.29	-0.66	+0.91
France	48.55	\$55.42	-5.44	+1.29

*Results are based on the exchange rate for March 15, 2026, exchange rate of 1 Euro/1.14156 \$USD.

Austria (1) prices exclude "haymilk," Austria (2) prices include "haymilk" which is produced by cows mainly fed grasses and dry hay, rather than silage.

A large Dutch organic milk processor announced the guaranteed price for organic farm milk in June 2026 is 61.75 EUR/100kg (\$71.94 USD), unchanged from May 2026. The processor stated reference companies are likely to lower prices this month, due to negative market pressures, but a correction for last month kept the organic pay price unchanged. The guaranteed organic price applies to 100kg of milk with standard component levels: 3.58 percent protein, 4.45 percent fat, and 4.53 percent lactose. The amounts apply to an average supply of 550,000 kg of milk annually.

A cooperative announced their June organic milk pay price is unchanged in the UK, 56.31 pence per liter (ppl), \$0.76 USD. The announcement stated organic demand is strong in the UK, but supply is currently outpacing demand, and the outlook is uncertain.

In a recent report from a Pacific Northwest livestock auction, the top 10 organic cull cows traded lower than the top 10 conventional cull cows, and the overall price for organic cull cows was higher than conventional cull cows. The average price for the top 10 organic cows auctioned was \$175.33 per hundredweight, compared to an average price of \$194.68 per hundredweight for the top 10 conventional cows auctioned. The average weight for the top 10 conventional cows was 1,303.5 pounds compared to 1,083.5 pounds for the top 10 organic cows. The overall price for organic cows auctioned was \$173.53 per hundredweight with an average weight of 1,060.5 pounds, while the overall price for conventional cows auctioned was \$161.25 per hundredweight with an average weight of 1,284.5 pounds.

NATIONAL ORGANIC GRAIN AND FEEDSTUFFS

The following was reported by USDA AMS Livestock, Poultry, and Grain Market News (LPGMN) in the National Organic Grain and Feedstuffs Report. Organic feed corn spot market prices continue to rally this period, trading \$1.59/bu higher delivered country elevator, and \$0.76/bu higher delivered feed mill. Old crop forward contracts delivering now through Q3 are \$0.10-\$0.28/bu higher than the current spot market weighted average price. Country elevators are procuring new crop feed corn for delivery Q4 2026-Q1 2027; feed mills are contracted for Q4 delivery. Organic feed soybean demand is good with moderate activity. Spot market trades are \$0.02 lower delivered crush facility.

CONTINUED ON PAGE 8A

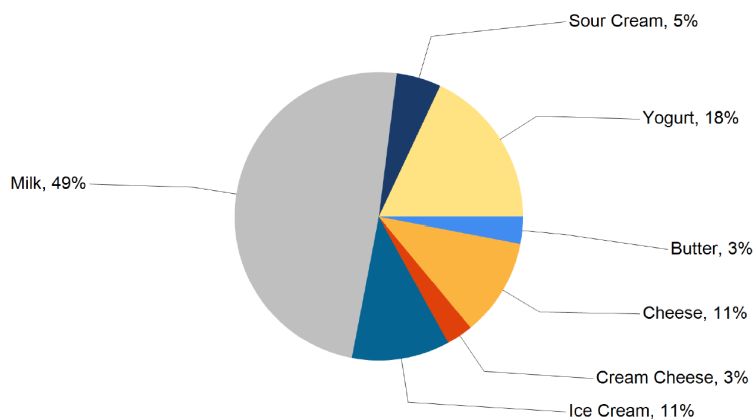
CONTINUED FROM PAGE 8

Few forward contracts procured for Q4 2026-Q3 2027 delivery. Organic feed soft red winter wheat sold \$1.67/bu higher delivered feed mill. New crop forward contracts were \$0.67/bu higher than in the last period. Organic soybean meal sold \$11.11/ton lower FOB the crush facility. Organic soybean oil sold \$0.06/lb higher FOB the crush facility. The next report will be published on Wednesday, June 10, 2026.

ORGANIC DAIRY RETAIL OVERVIEW

Organic dairy advertisements increased 30 percent in week 22. The most advertised organic commodity, milk, appeared in 40 percent more ads this week. Cottage cheese was absent from ads, after appearing in week 21. Yogurt jumped from the 7th most advertised commodity last week to the second most advertised this week.

Percentage of Total Organic Ads by Commodity



The most advertised organic milk product is half gallon milk, which appeared in 45 percent more ads this week. Ads for organic gallons decreased 59 percent from week 21. The weighted average advertised price (average price) for organic half gallon milk is \$4.42, up 21 cents. Conventional half gallon milk's average price is \$1.76, making the organic premium \$2.66 this week.

Organic yogurt ads increased 588 percent in week 22. Every organic yogurt product present in last week's survey appeared in more ads this week. The most advertised organic yogurt product is regular style in 32-ounce containers, which appeared in 1,371 percent more ads. The average price for this product is up 17 cents to \$4.88, while its conventional counterpart has an average price of \$2.85. The week 22 organic premium for 32-ounce regular style yogurt is \$2.03.

Total ads for organic cheese decreased by 10 percent this week. Packages of organic 6-8-ounce sliced cheese appeared in week 21 ads but is absent this week. Organic 6-8-ounce shred style cheese is the most advertised organic cheese product and appeared in 94 percent more ads this week. The average price for this product increased 57 cents to \$4.22. Conventional 6-8-ounce shred style cheese has an average price of \$2.65, leaving an organic premium of \$1.57 this week.

Both organic ice cream products appeared in fewer ads this week and total ads are down 10 percent. Ads for the most advertised organic ice cream product, 14-16-ounce packages, decreased 7 percent, and the average price is down 12 cents to \$6.24. Conventional 14-16-ounce ice cream's average price is \$3.46. The organic premium for this product is \$2.78.

NATIONAL RETAIL ORGANIC DAIRY WEIGHTED AVERAGE ADVERTISED PRICES

COMMODITY	This Week	Last Week	Last Year
Butter - 8 oz.	\$4.29	\$5.99	n.a.
Butter - 1 lb.	\$7.48	\$7.64	\$7.31
Cheese - 6-8 oz. Block	\$3.99	\$4.07	\$5.90
Cheese - 6-8 oz. Shred	\$4.22	\$3.65	\$4.71
Cheese - 6-8 oz. Sliced	n.a.	\$5.20	n.a.
Cheese - 1 lb. Shred	\$7.19	\$7.20	n.a.
Cottage Cheese - 16 oz.	n.a.	\$5.15	\$6.49
Cream Cheese - 8 oz.	\$4.31	\$4.90	\$4.24
Ice Cream - 14-16 oz.	\$6.24	\$6.36	\$9.99
Ice Cream - 48-64 oz.	\$9.93	\$9.05	\$7.99
Milk - Half Gal	\$4.42	\$4.21	\$4.93
Milk - Gallon	\$5.49	\$7.66	\$7.41
Sour Cream - 16 oz.	\$3.75	\$4.60	\$3.95
Yogurt - 4-6 oz. Yogurt	\$2.50	\$1.25	n.a.
Yogurt - 32 oz. Greek	\$5.87	\$6.99	\$7.10
Yogurt - 32 oz. Yogurt	\$4.88	\$4.71	\$4.38

April Milk Production

Milk production in the 24 major States during April totaled 19.2 billion pounds, up 2.8 percent from April 2025. March revised production, at 19.7 billion pounds, was up 2.8 percent from March 2025. The March revision represented an increase of 71 million pounds or 0.4 percent from last month's preliminary production estimate.

Production per cow in the 24 major States averaged 2,082 pounds for April, 13 pounds above April 2025.

The number of milk cows on farms in the 24 major States was 9.21 million head, 193,000 head more than April 2025, and 12,000 head more than April 2026.

April 2026 Milk Cows and Milk Production, by States

State	Milk Cows ¹		Milk per Cow ²		Milk Production ²		
	2025	2026	2025	2026	2025	2026	Change from 2025
	<i>(thousands)</i>		<i>(pounds)</i>		<i>(million pounds)</i>		<i>(percent)</i>
AZ	191	194	2,185	2,185	417	424	1.7
CA	1,710	1,715	2,030	2,070	3,471	3,550	2.3
CO	209	219	2,170	2,180	454	477	5.1
FL	95	97	1,895	1,900	180	184	2.2
GA	87	88	2,040	2,110	177	186	5.1
ID	704	727	2,130	2,125	1,500	1,545	3.0
IL	76	77	1,880	1,895	143	146	2.1
IN	189	199	2,000	2,005	378	399	5.6
IA	244	247	2,085	2,095	509	517	1.6
KS	196	240	2,020	2,040	396	490	23.7
MI	448	467	2,315	2,310	1,037	1,079	4.1
MN	442	452	1,995	1,995	882	902	2.3
NM	239	237	2,130	2,140	509	507	-0.4
NY	638	647	2,155	2,145	1,375	1,388	0.9
OH	254	256	1,890	1,910	480	489	1.9
OR	116	124	1,760	1,765	204	219	7.4
PA	464	452	1,810	1,820	840	823	-2.0
SD	230	243	1,925	1,940	443	471	6.3
TX	690	719	2,190	2,195	1,511	1,578	4.4
UT	97	100	1,940	1,955	188	196	4.3
VT	113	112	1,850	1,860	209	208	-0.5
VA	67	66	1,840	1,845	123	122	-0.8
WA	251	234	2,050	2,045	515	479	-7.0
WI	1,267	1,298	2,145	2,155	2,718	2,797	2.9
24 State Total	9,017	9,210	2,069	2,082	18,659	19,176	2.8

¹ Includes dry cows. Excludes heifers not yet fresh.

² Excludes milk sucked by calves.

Source: U.S. Department of Agriculture. National Agricultural Statistics Service. Agricultural Statistics Board. *Milk Production*, (May 2026)

Market Summary and Utilization Report, April 2026

Highlights. During April, 12.6 billion pounds of milk were received from Federally pooled producers. This volume of milk is 13.4 percent lower than the 2025 volume. Regulated handlers pooled 3.3 billion pounds of producer milk as Class I products, up 1.0 percent when compared to the previous year. The all-market average Class utilization percentages were: Class I = 26%, Class II = 14%, Class III = 54%, Class IV = 6%. The weighted average statistical uniform price was \$19.11 per cwt, \$1.21 higher than last month and \$0.25 higher than last year.

Federal Milk Order Marketing Area ¹	Order Number	Receipts of Producer Milk		Utilization of Producer Milk in Class I	
		Total	Change from Prev. Year	Total	Change from Prev. Year
		<i>(million lbs)</i>	<i>(percent)</i>	<i>(million lbs)</i>	<i>(percent)</i>
Northeast (Boston)	001	2,341.4	0.6	641.5	0.0
Appalachian (Charlotte)	005	408.5	-9.8	302.1	0.3
Florida (Tampa)	006	206.3	-3.7	169.8	0.6
Southeast (Atlanta)	007	306.8	-1.1	216.4	-1.6
Upper Midwest (Chicago)	030	2,495.5	-3.4	162.4	2.0
Central (Kansas City)	032	1,236.7	-9.5	349.0	2.3
Mideast (Cleveland)	033	1,681.4	10.0	572.0	11.8
California (Los Angeles)	051	1,841.4	-43.7	393.6	2.0
Pacific Northwest (Seattle)	124	383.4	-43.9	70.8	-40.3
Southwest (Dallas)	126	1,261.3	-9.7	331.7	2.5
Arizona (Phoenix)	131	420.6	8.4	106.1	-5.6
All Market Total or Average ²		12,583.3	-13.4	3,315.4	1.0

¹ Each name in parentheses is the major city in the principal pricing point of the market. ² Totals may not add due to rounding. Averages are the weighted average percent change.

Federal Milk Order Marketing Area ¹	Order Number	Utilization of Producer Milk in All Classes ²				Uniform Price ³
		Class I	Class II	Class III	Class IV	
		<i>(percent)</i> ²				<i>(\$ per cwt)</i>
Northeast (Boston)	001	27	30	29	14	20.25
Appalachian (Charlotte)	005	74	17	5	3	22.86
Florida (Tampa)	006	82	14	3	1	24.04
Southeast (Atlanta)	007	71	20	5	4	22.94
Upper Midwest (Chicago)	030	7	1	92	1	17.43
Central (Kansas City)	032	28	11	50	11	18.92
Mideast (Cleveland)	033	34	20	41	5	19.14
California (Los Angeles)	051	21	6	70	3	18.28
Pacific Northwest (Seattle)	124	18	5	75	1	18.08
Southwest (Dallas)	126	26	9	64	1	18.90
Arizona (Phoenix)	131	25	27	16	32	19.50
All Market Total or Average ³		26	14	54	6	19.11

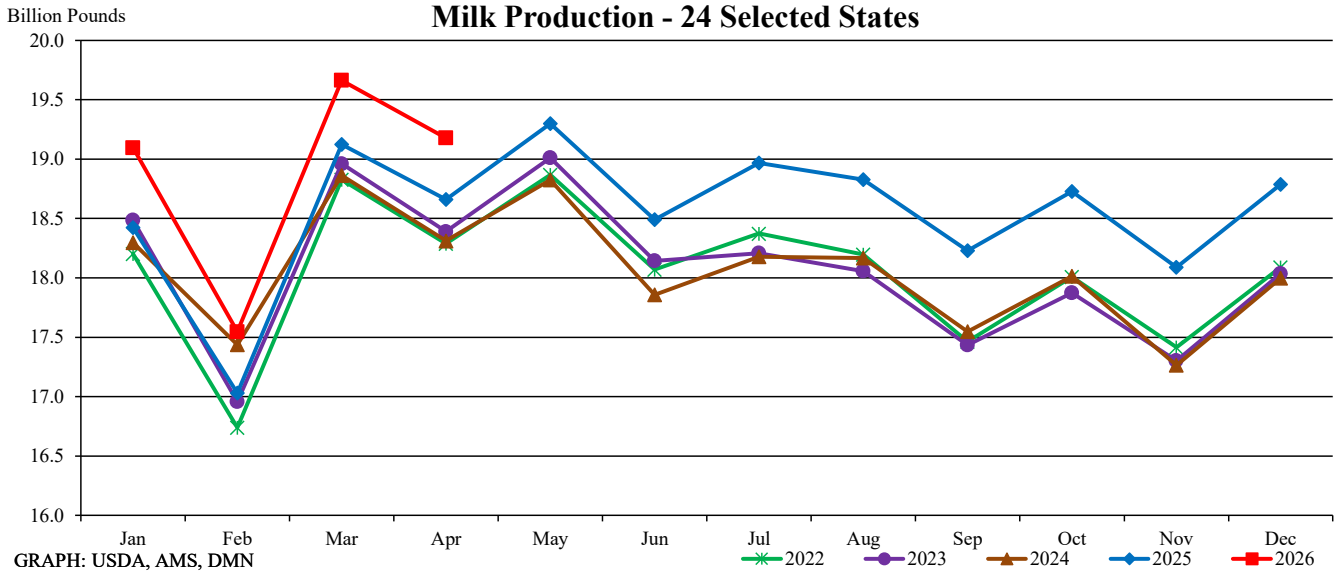
¹ Each name in parentheses is the major city in the principal pricing point of the market. ² Totals may not add to 100 percent due to rounding. Averages are weighted averages. ³ Statistical uniform prices for component pricing orders (Class III price plus producer price differential). For other orders, uniform skim milk price times 0.965 plus uniform butterfat price times 3.5.

U.S. Milk Production - 24 Selected States (Billion Pounds)

Year	Jan	Feb	Mar	Apr	May	Jun	Jul	Aug	Sep	Oct	Nov	Dec
2022	18.201	16.739	18.826	18.287	18.868	18.070	18.373	18.196	17.465	18.009	17.415	18.088
2023	18.485	16.958	18.960	18.389	19.011	18.142	18.207	18.056	17.435	17.872	17.302	18.034
2024	18.297	17.437	18.862	18.311	18.824	17.858	18.178	18.166	17.548	18.014	17.265	17.998
2025	18.423	17.030	19.124	18.659	19.298	18.489	18.967	18.827	18.230	18.726	18.088	18.787
2026	19.095	17.546	19.662	19.176	#N/A	#N/A	#N/A	#N/A	#N/A	#N/A	#N/A	#N/A

DATA SOURCE, USDA, NASS Milk Production, released 5/22/2026

NOTE: February data adjusted to 28 day equivalents.

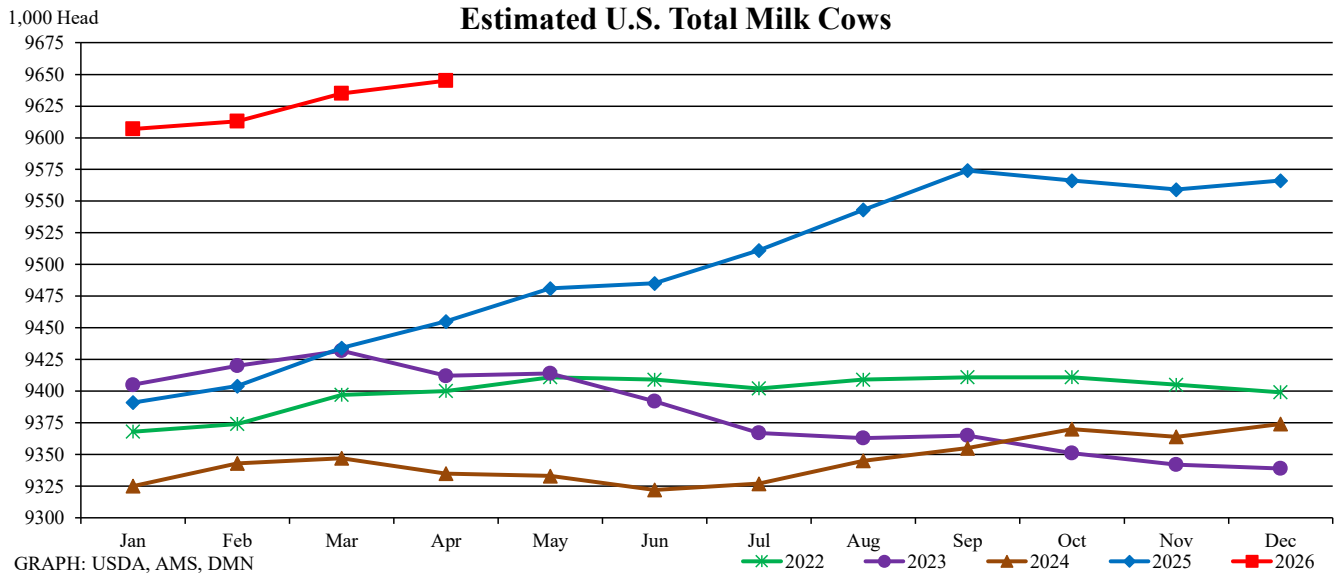


Estimated U.S. Total Milk Cows (1000 Head)

Year	Jan	Feb	Mar	Apr	May	Jun	Jul	Aug	Sep	Oct	Nov	Dec
2022	9368	9374	9397	9400	9411	9409	9402	9409	9411	9411	9405	9399
2023	9405	9420	9432	9412	9414	9392	9367	9363	9365	9351	9342	9339
2024	9325	9343	9347	9335	9333	9322	9327	9345	9355	9370	9364	9374
2025	9391	9404	9434	9455	9481	9485	9511	9543	9574	9566	9559	9566
2026	9607	9613	9635	9645	#N/A	#N/A	#N/A	#N/A	#N/A	#N/A	#N/A	#N/A

DATA SOURCE, USDA, NASS Milk Production, released 5/22/2026

Includes Dry Cows. Excludes heifers not yet fresh.





Email us with accessibility issues with this report.

Advertised Prices for Dairy Products at Major Grocery Store Outlets ending during the period of 5/23/2026 to 6/4/2026

The information contained in this report reflects prices advertised by major grocery retailers to consumers through circulars and digital promotions and gathered by USDA through a weekly survey.

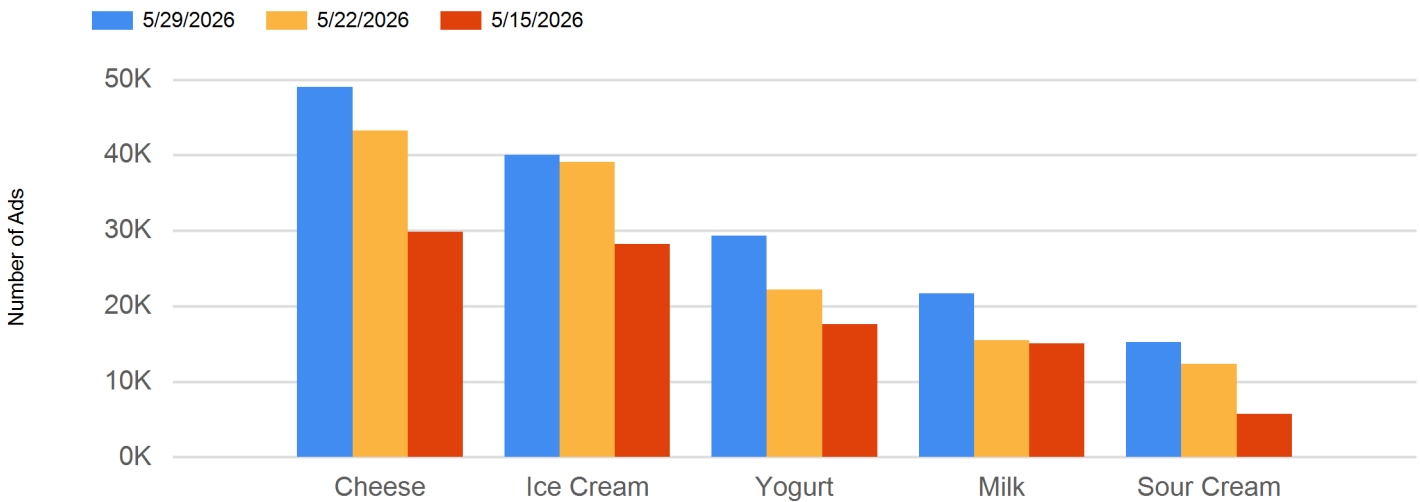
Conventional dairy advertisements are up 16 percent, and organic dairy ads increased 30 percent in week 22. The only conventional dairy commodity that appeared in fewer ads this week is butter. The most advertised conventional commodity is cheese, and milk is the most advertised commodity in the organic aisle.

Ads for conventional cheese increased 14 percent this week, and organic cheese ads declined 10 percent. The most advertised conventional cheese product, 6-8-ounce shreds, appeared in 31 percent more ads this week. The weighted average advertised price (average price) for this product increased 25 cents, to \$2.65. Organic 6-8-ounce shred style cheese ads are up 94 percent, and the average price is \$4.22, up 57 cents. The week 22 organic premium for 6-8-ounce shred style cheese is \$1.57

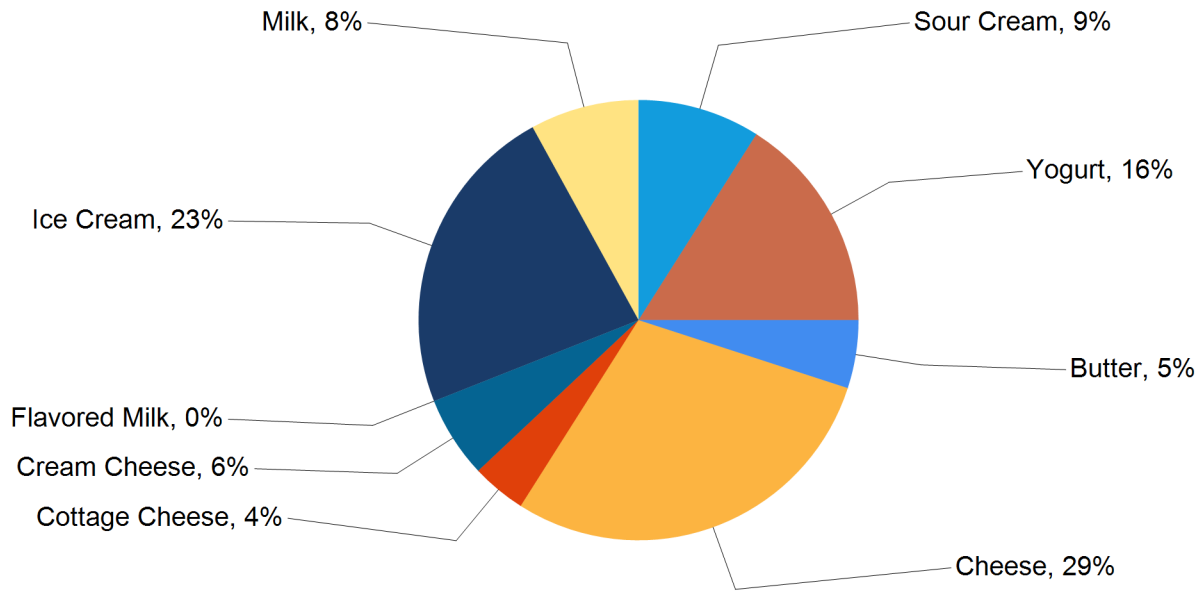
Ice cream is the second most advertised conventional commodity and appeared in 3 percent more ads this week. Organic ice cream ads decreased 10 percent. Conventional 48-64-ounce ice cream ads decreased 11 percent, and the average price is unchanged, \$3.69. Organic 48-64-ounce ice cream ads are down 18 percent, and the average price increased 88 cents to \$9.93. Ice cream sold in 48-64-ounce containers has an organic premium of \$6.27 this week.

Total ads for both conventional and organic milk increased 40 percent. Gallons are the most advertised package size for conventional milk, and ads are up 46 percent. The average price for conventional gallon milk is \$3.30. In the organic aisle, gallon milk ads fell 59 percent, and the average price decreased \$2.17, to \$5.49. The week 22 organic premium for this product is \$2.19.

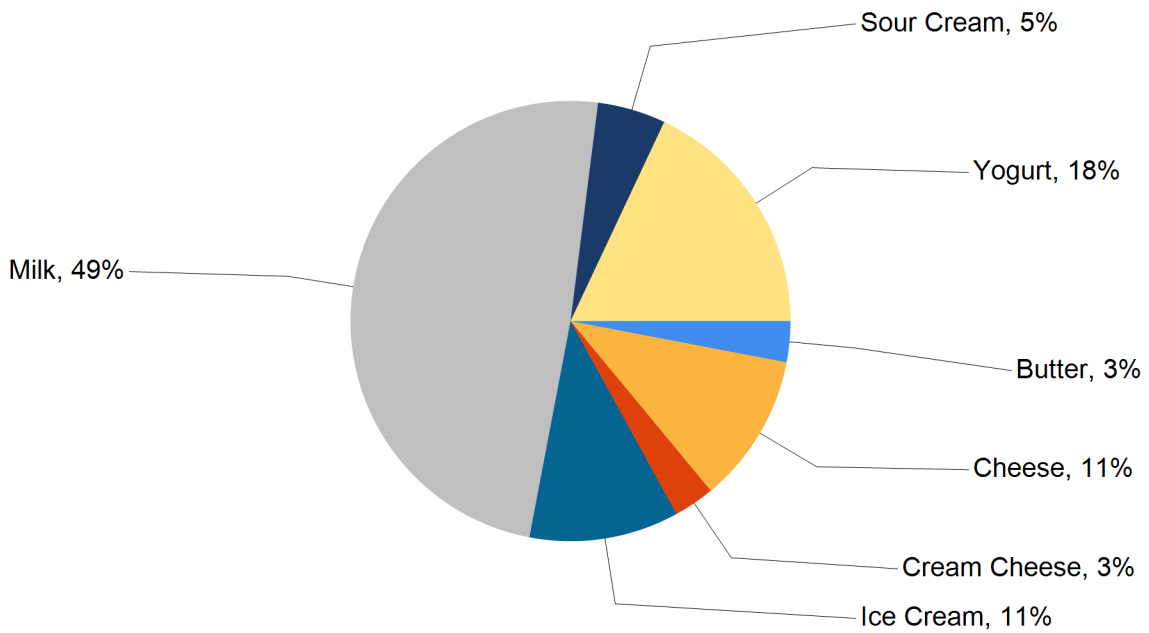
Top 5 Commodities Featured This Week



Percentage of Total Conventional Ads by Commodity



Percentage of Total Organic Ads by Commodity





NATIONAL -- CONVENTIONAL DAIRY PRODUCTS

Dairy								
Commodity	Type	Pack Size	THIS PERIOD		LAST WEEK		LAST YEAR	
			Stores With Ads	Wtd Avg Price	Stores With Ads	Wtd Avg Price	Stores With Ads	Wtd Avg Price
Butter		8 oz	4102	2.37	2708	2.31	205	3.55
Butter		1 lb	4239	3.53	6905	3.52	6293	4.36
Cheese	Natural Varieties	6-8 oz Block	8374	2.64	10520	2.78	3767	2.53
Cheese	Natural Varieties	6-8 oz Shred	18019	2.65	13805	2.40	7302	2.48
Cheese	Natural Varieties	6-8 oz Sliced	9191	2.41	14273	2.35	5384	2.90
Cheese	Natural Varieties	1 lb Block	888	4.53	552	5.88	1598	4.34
Cheese	Natural Varieties	1 lb Shred	6355	4.22	897	4.98	5438	3.73
Cheese	Natural Varieties	1 lb Sliced	333	4.16	190	6.99	1254	5.74
Cheese	Natural Varieties	2 lb Block	1669	6.54	443	8.54	1544	6.31
Cheese	Natural Varieties	2 lb Shred	2436	6.96	606	7.01	2523	6.70
Cottage Cheese		16 oz	3523	2.82	1703	3.18	2341	2.90
Cottage Cheese		24 oz	3275	2.93	1415	3.55	1723	3.23
Cream Cheese		8 oz	9428	2.37	8228	2.70	5280	3.09
Cream Cheese		12 oz	496	4.97				
Flavored Milk	All Fat Tests	Half Gallon	293	2.74	199	3.29	1953	1.40
Flavored Milk	All Fat Tests	Gallon	3	7.99	3	7.99	191	5.03
Ice Cream		14-16 oz	17295	3.46	13745	3.68	11277	4.12
Ice Cream		48-64 oz	21043	3.69	23533	3.69	17489	4.22
Milk	All Fat Tests	Half Gallon	5948	1.76	4455	1.90	3848	1.56
Milk	All Fat Tests	Gallon	8041	3.30	5521	3.05	6116	2.93
Sour Cream		16 oz	12648	2.22	10182	2.21	4522	2.19
Sour Cream		24 oz	1782	3.98	1215	3.66	2511	3.40
Yogurt	Greek	4-6 oz	17183	1.26	13084	1.30	6095	1.14
Yogurt	Yogurt	4-6 oz	3555	0.74	3276	0.90	4716	0.59
Yogurt	Greek	32 oz	1680	4.95	3483	5.54	800	5.49
Yogurt	Yogurt	32 oz	3959	2.85	1944	3.52	1260	3.08



REGIONAL -- CONVENTIONAL DAIRY PRODUCTS

Commodity	Type	Pack Size	NORTHEAST U.S.			SOUTHEAST U.S.			MIDWEST U.S.		
			Price Range	Stores with Ads	Wtd Avg Price	Price Range	Stores with Ads	Wtd Avg Price	Price Range	Stores with Ads	Wtd Avg Price
Butter		8 oz	2.50 - 2.99	665	2.86	1.94	1341	1.94	1.99 - 2.49	387	2.25
Butter		1 lb	2.49 - 4.49	1512	3.26	2.99	74	2.99	2.99 - 4.99	673	4.04
Cheese	Natural Varieties	6-8 oz Block	1.67 - 3.99	2068	2.35	1.66 - 4.22	1910	2.39	1.67 - 5.99	2035	3.06
Cheese	Natural Varieties	6-8 oz Shred	1.67 - 3.50	2050	2.29	1.66 - 3.99	5561	2.23	1.67 - 2.99	1581	2.09
Cheese	Natural Varieties	6-8 oz Sliced	1.99 - 3.99	1247	2.43	1.67 - 4.00	2043	2.27	1.67 - 4.85	2249	2.81
Cheese	Natural Varieties	1 lb Block	3.99	262	3.99	3.99	65	3.99			
Cheese	Natural Varieties	1 lb Shred	3.29 - 4.97	1317	4.07	3.29 - 7.19	1996	3.87	3.29	862	3.29
Cheese	Natural Varieties	1 lb Sliced	3.99	322	3.99						
Cheese	Natural Varieties	2 lb Block	5.99	74	5.99				6.49	245	6.49
Cheese	Natural Varieties	2 lb Shred	5.99 - 7.99	264	7.43				5.99 - 9.99	494	7.76
Cottage Cheese		16 oz	2.50 - 3.99	1114	2.98	3.00	1094	3.00	2.00 - 2.29	620	2.26
Cottage Cheese		24 oz	2.99 - 4.49	137	3.70	2.87	1341	2.87			
Cream Cheese		8 oz	0.89 - 3.47	1482	2.94	0.89 - 3.00	2919	2.24	1.50 - 3.49	521	2.15
Cream Cheese		12 oz	4.97	496	4.97						
Flavored Milk	All Fat Tests	Half Gallon							1.39 - 3.50	293	2.74
Ice Cream		14-16 oz	2.50 - 6.38	3651	3.75	2.12 - 7.99	4209	3.18	2.99 - 6.38	1873	3.62
Ice Cream		48-64 oz	2.49 - 6.99	3694	3.88	2.97 - 4.99	4805	3.50	1.99 - 5.99	2867	3.58
Milk	All Fat Tests	Half Gallon	1.99 - 3.29	642	2.59	1.39 - 1.63	1804	1.57	1.39 - 1.54	1556	1.51
Milk	All Fat Tests	Gallon	4.30	496	4.30	2.72	1341	2.72	2.58 - 3.49	988	2.67
Sour Cream		16 oz	1.69 - 2.99	1703	2.42	1.84 - 2.75	4439	2.17	1.89 - 1.99	1108	1.94
Sour Cream		24 oz	3.34 - 3.99	561	3.42						
Yogurt	Greek	4-6 oz	0.87 - 2.50	3024	1.16	0.89 - 3.00	7582	1.21	0.99 - 3.00	764	1.40
Yogurt	Yogurt	4-6 oz	0.70 - 1.50	708	1.13	0.70 - 2.33	1180	0.82	0.39 - 0.59	483	0.49
Yogurt	Greek	32 oz	3.99 - 6.49	954	5.10				4.00 - 5.49	212	4.75
Yogurt	Yogurt	32 oz	2.29 - 3.99	383	3.00	2.64	1341	2.64			



Commodity	Type	Pack Size	SOUTH CENTRAL U.S.			SOUTHWEST U.S.			NORTHWEST U.S.		
			Price Range	Stores with Ads	Wtd Avg Price	Price Range	Stores with Ads	Wtd Avg Price	Price Range	Stores with Ads	Wtd Avg Price
Butter		8 oz	1.79 - 4.99	1383	2.14				4.29	305	4.29
Butter		1 lb	2.99 - 4.99	571	3.61	2.99 - 4.99	872	3.64	2.99 - 3.49	489	3.30
Cheese	Natural Varieties	6-8 oz Block	0.99 - 3.32	2240	2.69	2.99	73	2.99			
Cheese	Natural Varieties	6-8 oz Shred	0.99 - 5.83	6374	3.39	1.97 - 2.99	2264	2.27	2.50	123	2.50
Cheese	Natural Varieties	6-8 oz Sliced	1.67 - 2.50	2533	2.07	1.99 - 2.99	895	2.61	2.50 - 3.00	184	2.67
Cheese	Natural Varieties	1 lb Block	2.99 - 5.99	167	4.07	3.99	177	3.99	5.99	184	5.99
Cheese	Natural Varieties	1 lb Shred	2.99 - 5.77	1669	5.09	3.29 - 3.99	305	3.70	5.99	184	5.99
Cheese	Natural Varieties	2 lb Block	4.99 - 8.99	177	6.57	5.99 - 6.99	500	6.28	5.97 - 8.98	619	6.73
Cheese	Natural Varieties	2 lb Shred	4.99 - 8.99	375	6.52	5.99 - 10.99	656	7.32	5.97 - 5.99	599	5.98
Cottage Cheese		16 oz	1.99 - 2.69	155	2.46	2.50 - 3.00	536	2.86			
Cottage Cheese		24 oz	2.87	1221	2.87	2.87	485	2.87	3.98	81	3.98
Cream Cheese		8 oz	1.39 - 3.50	3270	2.29	1.56 - 2.99	1212	2.27			
Ice Cream		14-16 oz	2.12 - 6.38	3940	3.29	2.12 - 6.38	2518	3.63	2.50 - 3.99	976	3.24
Ice Cream		48-64 oz	2.49 - 4.99	4968	3.75	2.50 - 5.99	4355	3.77	2.99 - 3.49	233	3.25
Milk	All Fat Tests	Half Gallon	1.39 - 2.99	600	1.82	1.78 - 2.50	1141	1.91	1.39	184	1.39
Milk	All Fat Tests	Gallon	1.99 - 4.00	3787	3.58	2.82 - 3.99	1279	3.10	2.99	110	2.99
Sour Cream		16 oz	1.84 - 2.99	3278	2.24	1.84 - 2.99	1801	2.31	1.98 - 1.99	252	1.99
Sour Cream		24 oz	4.24	1221	4.24						
Yogurt	Greek	4-6 oz	0.99 - 1.66	2110	1.45	1.00 - 1.66	3056	1.27	1.25 - 1.27	539	1.26
Yogurt	Yogurt	4-6 oz	0.50 - 0.59	210	0.55	0.29 - 0.79	409	0.36	0.59 - 0.80	509	0.63
Yogurt	Greek	32 oz	4.99 - 7.49	254	5.58	3.97 - 4.99	199	4.24	2.99	61	2.99
Yogurt	Yogurt	32 oz	2.48 - 5.49	1456	2.86	2.64 - 2.99	540	2.68	3.48 - 4.49	162	3.98



Commodity	Type	Pack Size	ALASKA U.S.			HAWAII U.S.		
			Price Range	Stores with Ads	Wtd Avg Price	Price Range	Stores with Ads	Wtd Avg Price
Butter		8 oz	4.49	11	4.49	2.33	10	2.33
Butter		1 lb	3.99 - 5.99	48	4.64			
Cheese	Natural Varieties	6-8 oz Block	3.99	4	3.99	3.86 - 4.89	44	4.65
Cheese	Natural Varieties	6-8 oz Shred	3.00 - 3.99	13	3.15	2.36 - 4.59	53	3.77
Cheese	Natural Varieties	6-8 oz Sliced	3.00 - 3.99	15	3.26	2.00 - 4.85	25	3.34
Cheese	Natural Varieties	1 lb Block	4.99 - 8.99	33	6.99			
Cheese	Natural Varieties	1 lb Shred	6.99 - 8.99	22	7.99			
Cheese	Natural Varieties	1 lb Sliced	8.99	11	8.99			
Cheese	Natural Varieties	2 lb Block	6.99 - 10.99	31	8.15	6.99	23	6.99
Cheese	Natural Varieties	2 lb Shred	6.99 - 9.28	25	7.26	6.99	23	6.99
Cottage Cheese		16 oz	2.99 - 3.49	4	3.24			
Cottage Cheese		24 oz				3.44	10	3.44
Cream Cheese		8 oz				2.00 - 3.58	24	2.70
Flavored Milk	All Fat Tests	Gallon				7.99	3	7.99
Ice Cream		14-16 oz	2.99 - 8.49	55	7.35	2.38 - 5.49	73	4.41
Ice Cream		48-64 oz	3.00 - 5.99	38	4.23	2.50 - 7.99	83	4.37
Milk	All Fat Tests	Half Gallon	4.50	11	4.50	3.78	10	3.78
Milk	All Fat Tests	Gallon	3.49 - 7.49	20	5.29	5.99 - 7.99	20	6.44
Sour Cream		16 oz	2.29 - 3.49	24	2.90	2.22 - 3.49	43	3.12
Yogurt	Greek	4-6 oz	1.25 - 2.66	71	2.06	1.66 - 2.33	37	1.82
Yogurt	Yogurt	4-6 oz	0.70 - 0.79	33	0.76	0.39	23	0.39
Yogurt	Yogurt	32 oz	3.29 - 5.49	44	4.39	3.17 - 5.29	33	4.65



NATIONAL -- ORGANIC DAIRY PRODUCTS

Dairy								
Commodity	Type	Pack Size	THIS PERIOD		LAST WEEK		LAST YEAR	
			Stores With Ads	Wtd Avg Price	Stores With Ads	Wtd Avg Price	Stores With Ads	Wtd Avg Price
Butter		8 oz	424	4.29	218	5.99		
Butter		1 lb	97	7.48	218	7.64	644	7.31
Cheese	Natural Varieties	6-8 oz Block	457	3.99	366	4.07	635	5.90
Cheese	Natural Varieties	6-8 oz Shred	1025	4.22	529	3.65	456	4.71
Cheese	Natural Varieties	6-8 oz Sliced			628	5.20		
Cheese	Natural Varieties	1 lb Shred	302	7.19	463	7.20		
Cottage Cheese		16 oz			312	5.15	60	6.49
Cream Cheese		8 oz	459	4.31	718	4.90	750	4.24
Flavored Milk	All Fat Tests	Half Gallon					188	5.49
Ice Cream		14-16 oz	1294	6.24	1396	6.36	107	9.99
Ice Cream		48-64 oz	381	9.93	463	9.05	343	7.99
Milk	All Fat Tests	Half Gallon	7605	4.42	5242	4.21	1003	4.93
Milk	All Fat Tests	Gallon	115	5.49	282	7.66	473	7.41
Sour Cream		16 oz	815	3.75	946	4.60	758	3.95
Yogurt	Yogurt	4-6 oz	219	2.50	117	1.25		
Yogurt	Greek	32 oz	305	5.87	146	6.99	244	7.10
Yogurt	Yogurt	32 oz	2412	4.88	164	4.71	772	4.38

REGIONAL -- ORGANIC DAIRY PRODUCTS

Commodity	Type	Pack Size	NORTHEAST U.S.			SOUTHEAST U.S.			MIDWEST U.S.		
			Price Range	Stores with Ads	Wtd Avg Price	Price Range	Stores with Ads	Wtd Avg Price	Price Range	Stores with Ads	Wtd Avg Price
Butter		8 oz	4.11 - 4.29	244	4.20				4.11	67	4.11
Butter		1 lb				7.48	86	7.48			
Cheese	Natural Varieties	6-8 oz Block	3.59	122	3.59	3.59	86	3.59	3.59	67	3.59
Cheese	Natural Varieties	6-8 oz Shred	3.59 - 4.49	244	4.04	3.68 - 4.94	172	4.31	3.14 - 4.94	134	4.04
Cheese	Natural Varieties	1 lb Shred	7.19	122	7.19				7.19	67	7.19
Cream Cheese		8 oz	4.49	122	4.49	4.11	86	4.11	3.74	67	3.74
Ice Cream		14-16 oz	5.98 - 6.73	657	6.13	5.98 - 6.73	172	6.36	5.98 - 6.73	134	6.36
Ice Cream		48-64 oz				8.99	94	8.99			
Milk	All Fat Tests	Half Gallon	3.97 - 5.99	1907	4.77	3.97 - 5.61	1599	4.14	3.97 - 5.83	1026	4.13
Sour Cream		16 oz	3.82	122	3.82	3.37 - 3.43	172	3.40	3.43 - 3.59	134	3.51
Yogurt	Greek	32 oz	4.19 - 7.99	244	6.09						
Yogurt	Yogurt	32 oz	5.69	122	5.69	4.19 - 5.49	1274	4.97	4.19 - 5.69	134	4.94



Commodity	Type	Pack Size	SOUTH CENTRAL U.S.			SOUTHWEST U.S.			NORTHWEST U.S.		
			Price Range	Stores with Ads	Wtd Avg Price	Price Range	Stores with Ads	Wtd Avg Price	Price Range	Stores with Ads	Wtd Avg Price
Butter		8 oz				4.57	109	4.57			
Cheese	Natural Varieties	6-8 oz Block	3.59 - 5.49	167	4.64						
Cheese	Natural Varieties	6-8 oz Shred	3.59 - 4.49	242	4.02	3.50 - 5.84	218	4.67			
Cheese	Natural Varieties	1 lb Shred				7.19	109	7.19			
Cream Cheese		8 oz	4.49	75	4.49	4.49	109	4.49			
Ice Cream		14-16 oz	5.98 - 6.99	210	6.54	5.98	109	5.98			
Ice Cream		48-64 oz	8.99	178	8.99	12.29	109	12.29			
Milk	All Fat Tests	Half Gallon	3.97 - 5.46	1612	4.10	3.97 - 6.49	1250	4.91	3.97	162	3.97
Milk	All Fat Tests	Gallon	5.49	115	5.49						
Sour Cream		16 oz	3.82 - 4.11	150	3.96	3.82 - 4.16	218	3.99			
Yogurt	Yogurt	4-6 oz				2.50	219	2.50			
Yogurt	Greek	32 oz							4.99	61	4.99
Yogurt	Yogurt	32 oz	4.19 - 5.49	227	4.66	4.54 - 5.69	437	5.30	2.99	184	2.99

Commodity	Type	Pack Size	ALASKA U.S.			HAWAII U.S.		
			Price Range	Stores with Ads	Wtd Avg Price	Price Range	Stores with Ads	Wtd Avg Price
Butter		8 oz				5.02	4	5.02
Butter		1 lb	7.49	11	7.49			
Cheese	Natural Varieties	6-8 oz Block	4.49	11	4.49	3.59	4	3.59
Cheese	Natural Varieties	6-8 oz Shred	4.49	11	4.49	4.94	4	4.94
Cheese	Natural Varieties	1 lb Shred				7.19	4	7.19
Ice Cream		14-16 oz				5.98 - 6.73	12	6.36
Milk	All Fat Tests	Half Gallon	5.00 - 5.99	31	5.70	4.49 - 5.83	18	4.94
Sour Cream		16 oz	3.79	11	3.79	3.43 - 3.59	8	3.51
Yogurt	Yogurt	32 oz	3.49 - 5.99	22	4.74	4.19 - 5.69	12	5.04



REGIONAL DEFINITIONS

As used in this report, regions include the following states:	
NORTHEAST U.S.	Connecticut, Delaware, Massachusetts, Maryland, Maine, New Hampshire, New Jersey, New York, Pennsylvania, Rhode Island and Vermont
SOUTHEAST U.S.	Alabama, Florida, Georgia, Mississippi, North Carolina, South Carolina, Tennessee, Virginia and West Virginia
MIDWEST U.S.	Iowa, Illinois, Indiana, Kentucky, Michigan, Minnesota, North Dakota, Nebraska, Ohio, South Dakota and Wisconsin
SOUTH CENTRAL U.S.	Arkansas, Colorado, Kansas, Louisiana, Missouri, New Mexico, Oklahoma, and Texas
SOUTHWEST U.S.	Arizona, California, Nevada and Utah
NORTHWEST U.S.	Idaho, Montana, Oregon, Washington, and Wyoming
ALASKA	Alaska
HAWAII	Hawaii
NATIONAL	Continental United States

1--Dairy Market News surveys nearly 130 retailers, comprising over 22,000 individual stores, with online weekly advertised features.

2--As of October 1, 2022, the previous year weighted average prices and store counts will be calculated using the date from the prior year that most closely matches the current report date.

Dairy Market News

United States Department of Agriculture

Volume 93, Report 22

May 25-29, 2026

MARKET NEWS REPORTERS

Roman Caraman
Roman.Caraman@USDA.GOV

Michael Corbin
Michael.Corbin@USDA.GOV

John Lahman
John.Lahman@USDA.GOV

Andrew Mattheis
Andrew.Mattheis@USDA.GOV

**NATIONAL SUPERVISOR,
DAIRY MARKET NEWS**
John Gelsthorpe
John.Gelsthorpe@USDA.GOV

USDA, Dairy Market News
4600 American Parkway, STE 106
Madison, WI 53718-8334

USDA MARKET NEWS MOBILE APP: The free USDA Market News app is available in both IOS and Android versions and may be downloaded through the Apple and Google Play stores. Search for “USDA Market News Mobile Application” to download the app and begin exploring its potential. The app allows the user to customize the commodity areas and market types they wish to see. All Dairy Market News reports that are available online are also available through the mobile app.



Available on Google Play

**Download the new
My Market News
Mobile App**

And on the App Store



Additional Dairy Market News Information:
DMN Website: <https://www.ams.usda.gov/market-news/dairy>
My Market News: <https://mymarketnews.ams.usda.gov/>