



# National Daily Cow and Boneless Beef Summary

Agricultural Marketing Service  
Livestock, Poultry, and Grain Market News

May 28, 2026

## Boneless Processing Beef and Beef Trimmings 100% Lean Items

LM_XB 401	National		Central		LM_XB 405	Loads	Wtd Avg	Change
	Loads	Wtd Avg	Loads	Wtd Avg				
Fresh 92-94%	0.00	0.00	0.0	0.00	Cutter Cow Carcass Cutout		359.63	-.13
Fresh 90%	0.0	0.00	0.0	0.00	Inside Rounds - Boxed	3.1	514.88	19.47
Fresh 85%	9.2	405.06	6.5	403.94	Outside Rounds	0.6	457.13	0.00
Fresh 81%	0.0	0.00	0.0	0.00	Eye of Rounds	1.9	502.63	(2.07)
Fresh 65%	4.7	245.29	4.3	244.95	Flats and Eyes - Combo	6.4	516.81	(0.18)
Fresh 50%	8.4	187.12			Striploins	3.6	657.63	(5.35)
					S.P.B. - Combo	10.8	545.62	(0.06)

## Ground Beef

LM_XB 403	Loads	Wtd Avg	Steer/Heifer/Cow Ground Beef	
Fresh 73%	0.6	361.36		
Fresh 81%	5.9	414.53		
Fresh 93%	1.5	529.83		
Ground Chuck	0.2	434.24	Loads	Wtd Avg
Ground Round	0.7	473.13	Fresh 81%	0.0
			Fresh 93%	0.00
			Ground Chuck	
			Ground Sirloin	

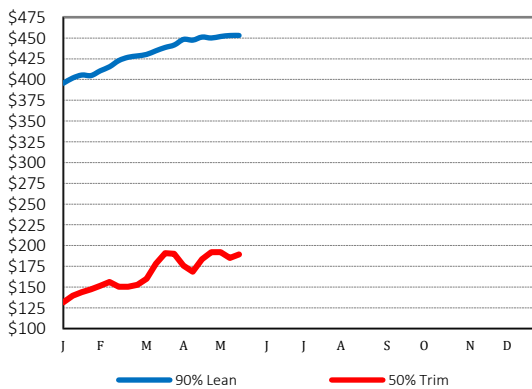
## Daily Estimated Slaughter

SJ_LS 710	
Today (est)	110,000
Week Ago (est)	109,000
Year Ago (act)	121,782
Week to Date (est)	329,000
Same Period Last Week (est)	427,000
Same Period Last Year (act)	364,066
Previous Day Est	Steer and Heifer 88,000
	Cow and Bull 19,000

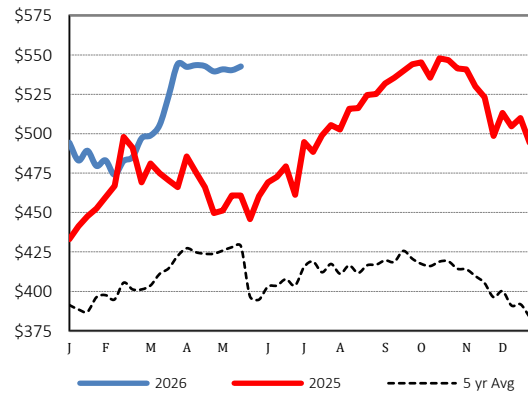
## Daily Cow and Bull Bids

LM_CT 138	Low	High
<b>National</b>		
Breaker	283.00	335.00
Boner	276.00	346.00
Lean	287.00	373.00
Bulls	300.00	393.00
<b>Northwest</b>		
Breaker	291.00	305.00
Boner	277.00	323.00
Lean	287.00	340.00
Bulls	314.00	363.00

## 2026 90% Lean vs 50% Lean



## 100% Lean Inside Rounds



Source: USDA Livestock, Poultry, and Grain Market News  
Des Moines, Iowa | 515-284-4460 | dsm.lpgmn@ams.usda.gov

[www.ams.usda.gov/LPSMarketNewsPage](http://www.ams.usda.gov/LPSMarketNewsPage)