

DAILY DIRECT HOGS PLANT DELIVERED as of 1:30 PM

Negotiated Barrow and Gilt:	Carcass Base Price		Live Price	
<u>NATIONAL - AMS 2675/LM_HG203:</u>				
Range:	\$90.00	\$95.00	\$61.50	\$74.05
Weighted Average:	\$93.23		\$69.09	
Change from Prior Day:	(-\$0.35)		(-\$1.18)	
Head Count:	1,452		1,179	

IOWA/MINNESOTA - AMS 2675/LM_HG206:

Weighted Average:	\$93.81		*	
Change from Prior Day:	\$0.83		*	

WESTERN CORNBELT - AMS 2675/LM_HG212:

Weighted Average:	\$93.48		*	
Change from Prior Day:	-\$0.10		*	

EASTERN CORNBELT - AMS 2675/LM_HG210:

Weighted Average:	*		\$71.57	
Change from Prior Day:	*		*	

*Price not reported due to confidentiality

NATIONAL DAILY PORK REPORT FOB PLANT- AMS 2498/LM_PK602:

Carcass Cutout Values	96.26	Change:	0.62
Primal Loin	95.13		2.67
Primal Butt	147.38		(-2.27)
Primal Picnic	76.10		(-0.83)
Primal Rib	188.04		5.16
Primal Ham	80.07		0.18
Primal Belly	104.89		0.49
Total Loads	326.17		
Pork Cuts	295.37	lds.	
Trim/Process Pork	30.80	lds.	

Weekly USDA By-Product Drop Value (Hog): 4.84 0.07

DAILY HOG SLAUGHTER UNDER FIS - AMS 3208/SJ_LS710

Today (est)	409,000	Saturday:	7,000
Week Ago (est)	438,000		30,000
Year Ago (act)	423,320		8,826
Week to Date (est)	2,314,000		2,321,000
Same Period Last Week (est)	2,329,000		2,359,000
Same Period Last Year (act)	2,347,664		2,356,490

National Daily Direct Hog Prior Day Report - Slaughtered Swine/LM_HG201

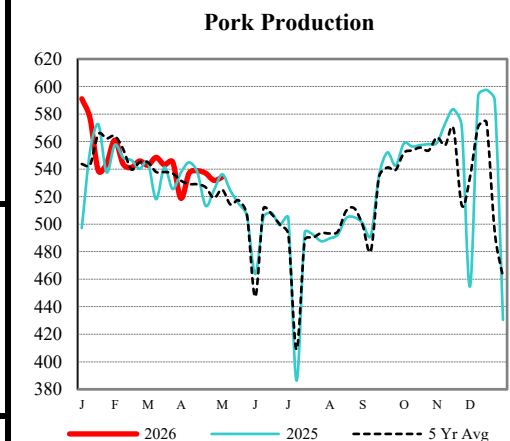
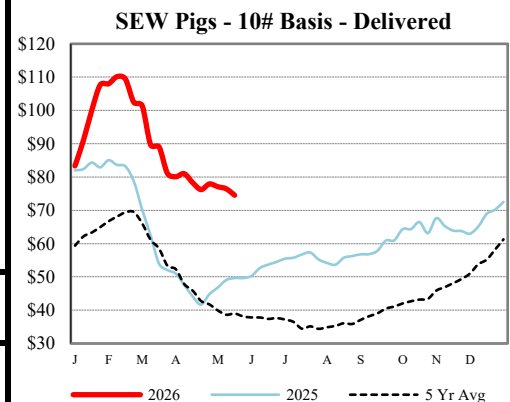
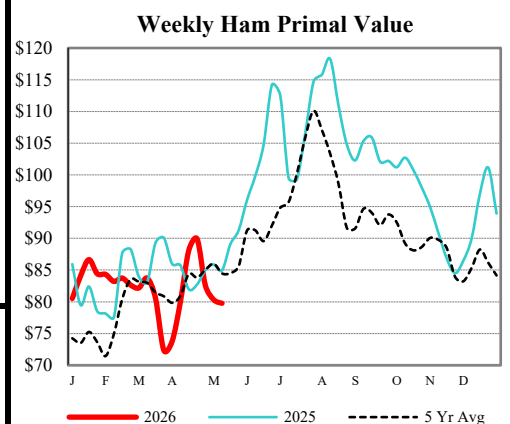
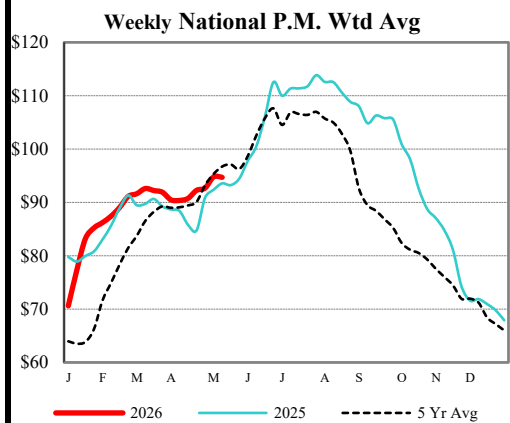
	NEG	OMF	SPMF	OPA	Total
Producer Sold:					
Head Count	5,437	30,666	125,669	78,876	241,730
Carcass Base Price	95.43	94.92	89.34	89.04	90.03
Average Net Price	94.90	97.86	90.68	90.90	91.71

Negotiated Formula included in total *Price not reported due to confidentiality.

US Direct Delivered Feeder Pig Summary for Weekending - AMS 2810

Formula, Cash, & Composite Wtd Avg Prices

		<u>Formula</u>	<u>Cash</u>	<u>Composite</u>
SEW	10-12 lb Basis	59.79	74.52	69.27
Feeder Pigs	40 lb Basis		105.59	105.59



USDA Livestock, Poultry & Grain Market News

Des Moines, Iowa | PH 515-284-4460

Email: Desm.LPGMN@usda.gov

<https://mymarketnews.ams.usda.gov/viewReport/2872>

USDA AMS Livestock, Poultry & Grain Market News