

**DAILY DIRECT HOGS PLANT DELIVERED as of 1:30 PM**

Negotiated Barrow and Gilt:	Carcass Base Price		Live Price	
<b><u>NATIONAL - AMS 2675/LM_HG203:</u></b>				
Range:	\$86.00	\$95.00	*	*
Weighted Average:	\$91.52		*	
Change from Prior Day:	<b>(-\$1.80)</b>		*	
Head Count:	1,633		1,437	

**IOWA/MINNESOTA - AMS 2675/LM\_HG206:**

Weighted Average:	*	*
Change from Prior Day:	*	*

**WESTERN CORNBELT - AMS 2675/LM\_HG212:**

Weighted Average:	\$91.65	*
Change from Prior Day:	-\$1.67	*

**EASTERN CORNBELT - AMS 2675/LM\_HG210:**

Weighted Average:	*	*
Change from Prior Day:	*	*

\*Price not reported due to confidentiality

**NATIONAL DAILY PORK REPORT FOB PLANT- AMS 2498/LM\_PK602:**

Carcass Cutout Values	97.56	Change:	1.01
Primal Loin	93.01		1.29
Primal Butt	144.11		2.20
Primal Picnic	74.08		2.26
Primal Rib	181.50		<b>(-1.75)</b>
Primal Ham	81.22		2.28
Primal Belly	120.67		<b>(-0.36)</b>
Total Loads	274.90		
Pork Cuts	242.62	lds.	
Trim/Process Pork	32.29	lds.	

**Weekly USDA By-Product Drop Value (Hog):** 4.77 0.02

**DAILY HOG SLAUGHTER UNDER FIS - AMS 3208/SJ\_LS710**

Today (est)	445,000	<b>Saturday:</b>	30,000
Week Ago (est)	479,000		43,000
Year Ago (act)	463,257		20,466
Week to Date (est)	2,336,000		2,366,000
Same Period Last Week (est)	2,407,000		2,450,000
Same Period Last Year (act)	2,371,726		2,392,192

**National Daily Direct Hog Prior Day Report - Slaughtered Swine/LM\_HG201**

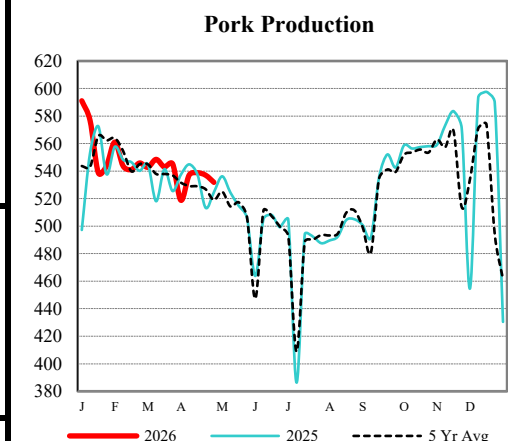
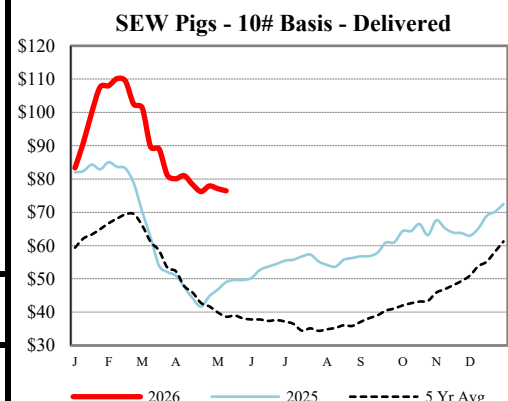
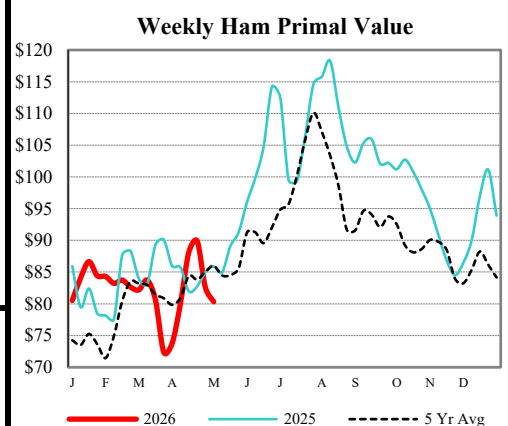
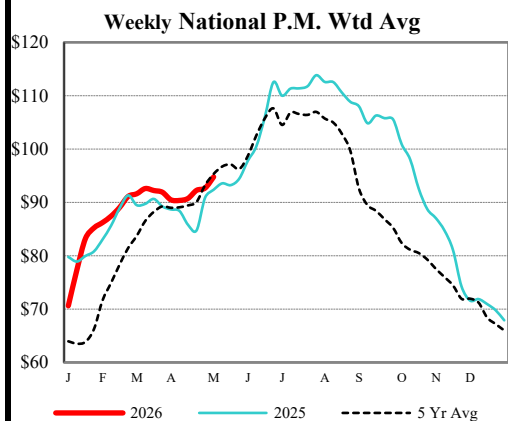
	NEG	OMF	SPMF	OPA	Total
Producer Sold:					
Head Count	4,538	20,196	121,641	71,424	218,849
Carcass Base Price	94.44	93.62	89.17	88.27	89.32
Average Net Price	93.84	95.40	90.52	90.17	90.87

\*\*\*Negotiated Formula included in total\*\*\* \*Price not reported due to confidentiality.

**US Direct Delivered Feeder Pig Summary for Weekending - AMS 2810**

Formula, Cash, & Composite Wtd Avg Prices

		<u>Formula</u>	<u>Cash</u>	<u>Composite</u>
SEW	10-12 lb Basis	59.16	76.45	69.46
Feeder Pigs	40 lb Basis		109.46	109.46



USDA Livestock, Poultry & Grain Market News

Des Moines, Iowa | PH 515-284-4460

Email: [Desm.LPGMN@usda.gov](mailto:Desm.LPGMN@usda.gov)

<https://mymarketnews.ams.usda.gov/viewReport/2872>

USDA AMS Livestock, Poultry & Grain Market News