



Weekly Cotton Market Review

Agricultural Marketing Service

Cotton and Tobacco Program ♦ Cotton Market News Division ♦ 3275 Appling Road ♦ Memphis, TN 38133 ♦ 901.384.3016

Mp_cn812

Vol. 107 No. 41
May 15, 2026

Inside this Issue

[Market Overview](#)

[Spot Quotations](#)

[ICE Futures](#)

[Southeastern](#)

[Textile Mill Report](#)

[South Central](#)

[Southwestern](#)

[Western](#)

[Cotton Ginnings](#)

[Supply & Demand](#)

[Crop Production](#)

[Pima Quotations](#)

Featured
[Staple Distribution](#)

[Cotton Market Reports](#)

[Subscribe to this report](#)

[Subscribe to all Cotton Market reports](#)

Spot quotations averaged 208 points higher than the previous week, according to the USDA, Agricultural Marketing Services Cotton and Tobacco Program. Quotations for the base quality of cotton (color 41, leaf 4, staple 34, mike 35-36 and 43-49, strength 27.0-28.9, and uniformity 81.0-81.9) in the seven designated markets, averaged 81.12 cents per pound for the week ending Thursday, May 14, 2026. The weekly average was up from 79.04 cents last week and from 63.21 cents reported in the corresponding period a year ago. Daily average quotations ranged from a season high of 82.98 cents on Monday, May 11 to a low of 79.15 cents on Thursday, May 14. Spot transactions reported in the Daily Spot Cotton Quotations for the week ended May 14 totaled 17,387 bales. This is compared to 18,774 reported last week and 4,612 bales reported the corresponding week a year ago. Total spot transactions for the season were 1,490,997 bales compared to 951,631 the corresponding week a year ago. The ICE July settlement price ended the week at 83.94 cents, compared to 83.00 cents last week.

41-4-34 Prices								
Date	SE	ND	SD	ETX-STX	WTX-KS-OK	DSW	SJV	7-MKT AVG
May 8	82.23	81.73	81.73	77.98	78.73	78.48	78.73	79.94
May 11	85.27	84.77	84.77	81.02	81.77	81.52	81.77	82.98
May 12	83.82	83.32	83.32	79.57	80.32	80.07	80.32	81.53
May 13	84.31	83.81	83.81	80.06	80.81	80.56	80.81	82.02
May 14	81.44	80.94	80.94	77.19	77.94	77.69	77.94	79.15
31-3-36 Prices								
Date	SE	ND	SD	ETX-STX	WTX-KS-OK	DSW	SJV	7-MKT AVG
May 8	87.98	86.48	85.98	84.73	82.73	84.48	91.13	86.22
May 11	91.02	89.52	89.02	87.77	85.77	87.52	94.17	89.26
May 12	89.57	88.07	87.57	86.32	84.32	86.07	92.72	87.81
May 13	90.06	88.56	88.06	86.81	84.81	86.56	93.21	88.30
May 14	87.19	85.69	85.19	83.94	81.94	83.69	90.34	85.43
Futures Settlement								Far Eastern A Index 1/
Date	Jul-26	Oct-26	Dec-26	Mar-27	May-27	Jul-27	Current	
May 8	84.73	85.79	85.46	86.13	86.40	85.49	92.80	
May 11	87.77	88.34	87.40	87.94	88.10	87.01	94.65	
May 12	86.32	87.03	86.28	86.78	86.93	85.96	97.65	
May 13	86.81	87.10	86.46	87.03	87.20	86.23	96.15	
May 14	83.94	84.67	84.48	85.06	85.30	84.48	96.65	
Spot Transactions								
Date	SE	ND	SD	ETX-STX	WTX-KS-OK	DSW	SJV	PIMA
May 8	0	0	0	0	0	0	0	256
May 11	0	0	0	0	0	0	0	0
May 12	0	0	0	0	15,049	0	0	0
May 13	0	0	0	0	1,110	0	0	0
May 14	0	0	0	0	1,228	0	0	0
Weekly Totals	0	0	0	0	17,387	0	0	256

Source: USDA, AMS, Cotton and Tobacco Program, 1/ Cotlook

Southeastern Markets Regional Summary

Danny Pino ♦ Macon, GA ♦ 478.752.3560 ♦ Danny.Pino@usda.gov

Spot cotton trading was inactive. Supplies were moderate. Demand was light. Producer offerings were light. Average local spot prices were higher. Trading of CCC-loan equities was inactive. Producers took advantage of higher ICE futures prices to forward contract a moderate volume of 2026-crop cotton.

Across the lower Southeast, overcast and windy conditions dominated the weather pattern early in the period with widespread thunderstorms prevalent. Partly cloudy to sunny conditions were observed later in the week. Below-normal daytime high temperatures were mostly in the 70s and 80s. Nighttime lows were in the 50s and 60s. Scattered shower activity brought beneficial moisture to areas throughout the region, with the heaviest accumulations recorded across south Alabama, the Florida Panhandle, and South Georgia. Precipitation totals measured one and one-half to three inches, with heavier localized accumulations of four to seven inches observed in some of these areas. Extreme drought improved across portions of Alabama, Georgia, and northern Florida, according to the U.S. Drought monitor. Despite the moisture, exceptional drought conditions persisted in areas of south and coastal Georgia. The wet weather delayed fieldwork in some areas but planting continued in areas where soil was firm enough to support equipment. According to the National Agricultural Statistics Service's (NASS) Crop Progress report released May 11, planting advanced to 38 percent in Alabama and 24 percent completed in Georgia.

Cloudy and breezy conditions prevailed across the upper Southeast over the weekend with a mix of clouds and sun observed as the week progressed. Daytime high temperatures were in the 70s and 80s. Nighttime lows were mostly in the 50s. Light, intermittent shower activity brought around one-quarter of an inch to one inch of precipitation to cotton growing areas of the eastern Carolinas and Virginia. Severe to extreme drought conditions persisted across Atlantic coastal areas with a pocket of exceptional drought remaining in South Carolina's Low Country region. According to NASS, planting made good progress and advanced to 25 percent completed in Virginia, 24 in South Carolina, and 21 percent completed in North Carolina.

[Textile Mill](#)

Domestic mill buyers inquired for a moderate volume of color 41, leaf 4, and staple 35 and longer for prompt through fourth quarter delivery. No sales and no additional inquiries were reported. Yarn demand was moderate. Mill buyers attempted to balance raw cotton purchases with yarn orders.

Demand through export channels was moderate. Demand from mills throughout the Far East remained steady, but resistance was noted for immediate raw cotton purchases as higher ICE futures prices squeezed profit margins on nearby yarn sales.

[Trading](#)

- No trading activity was reported.

South Central Markets Regional Summary

Aerielle McDaniel ♦ Memphis, TN ♦ 901.384.3016 ♦ Aerielle.McDaniel@usda.gov

North Delta

Trading of spot cotton and CCC-loan equities were inactive. Supplies of available cotton were light. Producer offerings were light. Demand was very light. Average local spot prices were higher. Interest in forward contracting has peaked because of thriving market prices. Business remained steady as contracts were being submitted into the loan.

Mostly sunny skies with occasional afternoon cloudiness dominated the weather pattern during the period. Daytime high temperatures were in the 70s and 80s. Overnight lows were in the 40s migrating into the 60s over the period. Thunderstorms moved through the region over the weekend. Rainfall over the weekend accumulated around one-quarter of an inch of precipitation. As reported by the drought monitor report, drought conditions remained the same in Arkansas and Tennessee with mostly severe to extreme dryness. More rain is needed to restore depleted underground moisture. Outdoor activities continued in the Mid-South. Planting is underway. Growers prepared to sow more seed. According to the Crop Progress report released on May 11, cotton planting in Arkansas and Tennessee was well above the five-year average, while Missouri remained below. In Arkansas, planting was 40 percent complete, and Tennessee had made strong progress at 49 percent. Cotton crops were reported to be 44 percent sowed in Missouri. Market activities peaked during the week, which persuaded forward contracting decisions. Virtual and in-person industry meetings were planned and attended by all interested parties.

South Delta

Trading of spot cotton and CCC-loan equities was inactive. Supplies of available cotton were light. Producer offerings were light. Demand was light. Average local spot prices were higher. Interest in forward contracting had begun to expand. Business remained steady as contracts were being submitted into the loan.

Partly sunny skies with intermittent afternoon cloudiness characterized the weather pattern. Daytime high temperatures were in the 70s and 80s, while overnight lows were in the 50s and 60s. Light rain showers over the weekend collected trace amounts to around four inches of rain. Precipitation slowed field activities. Although fields remained saturated, beneficial sunshine mid-week had begun to help topsoil firm enough to hold equipment. Fieldwork was expected to resume soon. More rain is needed in the nearby forecast to restore diminished aquifers underground. Creeks remained dry in spotted areas that receive less rain than other locales. As reported by the U.S. Drought Monitor report, drought conditions remained the same in Louisiana with mostly severe to extreme, and abnormal to severe in Mississippi. Cotton was placed in the loan as growers eagerly made forward contracting decisions in hopes that the market will remain steady. According to the Crop Progress report released on May 11, Louisiana is below the five-year average, but Mississippi is well above. In Louisiana cotton planted was at 25 percent completed, and at 47 percent in Mississippi. Virtual and in-person industry meetings were planned and attended by all interested parties.

Trading

North Delta

- No trading activity was reported.

South Delta

- No trading activity was reported.

Southwestern Markets Regional Summary

Bethany Lindgren ♦ Memphis, TN ♦ 901.384.3016 ♦ Bethany.Lindgren@usda.gov
Jane Byers-Angle ♦ Lubbock, TX ♦ 806.283.9389 ♦ Jane.Byers-Angle@usda.gov

East Texas-South Texas

Spot cotton trading was inactive. Supplies and producer offerings were light. Demand was light. Average local spot prices were higher. Producer interest in forward contracting was reported. Trading of CCC-loan equities was inactive. Foreign mill inquiries were light. Interest was best from Mexico and Vietnam.

Mostly sunny conditions prevailed throughout the week, with spotty thunderstorms entering the region late in the week in some areas. Daytime high temperatures were in the 70s to the 90s. Nighttime lows were in the 50s to the 70s. Precipitation totals ranged from one-half of an inch to over one and one-half inches of rain. Very wet field conditions persisted, leaving soil soggy in fields. A period of dry and clear weather will be needed to help dry fields and provide optimal sowing conditions. Later-planted cotton emerged, while some of the earliest-planted cotton was setting squares. Local experts reported that some fields were replanted after a cold snap left some holes in fields where some seedlings were not able to emerge. Overcast skies and showers early in the period were short-lived as sunshine and dry conditions returned to the South Texas region. Daytime high temperatures were in the 80s and 90s, with nighttime temperatures in the 60s to the 70s. Accumulated rainfall totals measured from one-quarter of an inch up to over one and one-quarter inches of precipitation. Stands developed under favorable weather conditions. Producers monitored pest populations and applied treatments as needed. Extension agents recommended pesticide applications for fleahoppers and whiteflies in the lower Rio Grande Valley. Industry participants attended district meetings in the region.

West Texas-Kansas-Oklahoma

Spot cotton trading was active. Supplies were light. Producer offerings were light. Demand was very light. Average local spot prices were higher. Producer interest in forward contracting was moderate. Trading of CCC-loan equities was active. Foreign mill inquiries were light. Interest was best from Mexico and Vietnam.

Sunny skies prevailed across Texas, with daytime temperatures ranging from the upper 50s to the mid-90s and overnight lows varying from the 40s to the 60s. Trace amounts of moisture were received intermittently. Rain chances were in the nearby forecast. Much of the High Plains remained dry, and additional moisture was needed. Planting activities expanded across the High Plains, and early sowing was reported in the Rolling Plains where moisture was available. Stands had begun to emerge. Wheat and corn acres were redirected to cotton, according to industry experts. Producers continued to manage planting challenges driven by persistent drought conditions and rising fertilizer and diesel costs.

Daytime highs in Kansas held steady in the low 70s to low 90s, while nighttime lows ranged from the 40s to the 60s. Conditions were mostly sunny, with slight rain chances in the nearby forecast. Scattered precipitation was reported, but not all cotton-growing areas received moisture, and amounts were light. Producers continued to monitor weather patterns and soil temperatures. Industry sources were encouraged by market prices, and some failed wheat acreage was expected to be reassigned to cotton. An overall increase in cotton acres was anticipated. Planting was underway.

Daytime temperatures across Oklahoma ranged from the low 70s to the upper 90s, while overnight lows dipped into the 40s and 60s. Sunny, windy conditions increased evaporation rates. Ginning was completed. Dry planting had begun, and producers were hopeful that the forecasted El Niño pattern would bring late-May rainfall to support germination. Cotton acreage was expected to increase as failed wheat stands were redirected to cotton.

Southwestern Markets Regional Summary

Bethany Lindgren ♦ Memphis, TN ♦ 901.384.3016 ♦ Bethany.Lindgren@usda.gov

Jane Byers-Angle ♦ Lubbock, TX ♦ 806.698.4648 ♦ Jane.Byers-Angle@usda.gov

Trading

East Texas/South Texas

- No trading activity was reported.

West Texas, Kansas, & Oklahoma

- In Texas, mixed lots containing a heavy volume of color 32 and better, leaf 3 and better, staple 33-38, mike 32-51, strength 26-33, and uniformity 78-82 sold for 76.75 to 77.00 cents per pound, FOB car/truck, (compression charged not paid).
- A light volume of cotton containing color 22-33, leaf 2-4, staple 32-34, mike averaging 46.4, strength averaging 29.4, and uniformity averaging 80.4 sold for around 70.50 cents, same terms as above.
- A heavy volume of CCC-loan equities traded for 16.75 to 25.75 cents.

Cotton Emerging in Gaines County



Photos Courtesy of Jimmy Banda, Oasis Gin

Western Markets Regional Summary

Bethany Lindgren ♦ Memphis, TN ♦ 901.384.3016 ♦ Bethany.Lindgren@usda.gov

[Desert Southwest \(DSW\)](#)

Spot cotton trading was inactive. Supplies and producer offerings were light. Demand was light. Producer interest in forward contracting was light. Average local prices were higher. No domestic mill activity was reported. Foreign mill inquiries were light.

Abundant sunshine was received in the DSW this week. Daily temperatures were in the 90s and climbed into the 110s. Nighttime lows were in the 50s to the 70s. No precipitation was reported. Planting progressed in Arizona and neared completion. According to the National Agricultural Statistics Service's (NASS) Crop Progress report, released on May 11, cotton planted was 81 percent complete in Arizona, 1 percent higher than the five-year average. Favorable weather conditions pushed plant development, and the first blooms reported in Yuma, AZ. Stands in Safford established a foundation for a good boll load, with the earliest-planted stands at the 5 true leaf stage. Irrigation was underway in Arizona. Growers picked up additional planting seed to cover final acres.

[San Joaquin Valley \(SJV\)](#)

Spot cotton trading was inactive. Supplies and demand were light. Light volumes of forward contracting were reported. Domestic mill activity was light. Average local prices were higher. Foreign mill inquiries were light.

Planting continued under wide-open skies in the SJV this week. Daytime highs were in the 90s to the 100s. Nighttime lows in the 50s to the 60s. A large portion of intended acreage has been planted, according to local sources. Ninety percent of the crop

had been sown in California, as reported in the May 11 NASS Crop Progress report, 7 percent higher than the five-year average. The crop made good progress. Developmental stages range, but later planted and replanted stands were emerging. Industry members prepared to attend upcoming meetings.

[American Pima \(AP\)](#)

Spot cotton trading was slow. Supplies were moderate. Demand was light. Light forward contracting was reported. Light domestic mill activity was reported. Average local spot prices were steady. Foreign mill inquiries were moderate.

Plenty of sunshine and dry conditions were observed in the DSW. No rain was recorded. Daily temperatures soared into the 90s and 110s. Nighttime low temperatures were in the 50s to the 70s. Stands developed well in the warm temperatures. Local sources mentioned that the first-planted fields were progressing well, with green, healthy stands reported as having up to five true leaves in Safford, AZ. The first blooms of the season were seen in Yuma, AZ. Arizona growers applied irrigation. Sunny and dry conditions persisted in California. No moisture was reported. Warm temperatures spurred plant growth.

[Trading](#)

Desert Southwest

- No trading activity was reported.

San Joaquin Valley

- No trading activity was reported.

American Pima

- No trading activity was reported.

Cotton Ginnings Report

The following information was excerpted from the Cotton Ginnings Annual Summary report, released on May 12, 2026

Running Bales Produced and Equivalent 480-pound Bales Ginned by Crop – States and United States: 2024 and 2025 Crop

Crop and State	Running bales produced		Equivalent 480-pound bales ginned	
	2024 Crop (number)	2025 Crop (number)	2024 Crop (number)	2025 Crop (number)
Upland				
Alabama	651,050	549,400	649,100	562,550
Arizona	248,700	246,150	244,950	241,050
Arkansas	1,754,250	1,294,900	1,985,950	1,457,450
California	75,100	80,150	89,300	95,700
Florida	115,000	106,600	116,100	91,950
Georgia	1,870,050	1,722,250	1,944,900	1,791,900
Kansas	197,050	150,950	179,100	165,200
Louisiana	324,050	219,250	336,550	229,050
Mississippi	1,216,400	771,250	1,178,550	730,850
Missouri	1,024,100	754,050	911,950	694,950
New Mexico	38,900	37,700	22,200	12,400
North Carolina	760,250	617,350	826,300	677,300
Oklahoma	263,850	649,500	168,750	534,050
South Carolina	381,650	333,150	337,700	291,250
Tennessee	535,950	342,500	545,550	350,550
Texas	3,953,850	5,109,500	4,156,550	5,356,400
Virginia	206,350	163,300	220,800	178,900
United States	13,616,550	13,147,950	13,914,300	13,461,500
American Pima				
Arizona	29,400	28,000	29,700	28,700
California	355,550	308,800	364,900	318,450
New Mexico	23,550	21,000	22,400	19,450
Texas	49,900	33,450	51,750	36,150
United States	458,400	391,250	468,750	402,750
All				
Alabama	651,050	549,400	649,100	562,550
Arizona	278,100	274,150	274,650	269,750
Arkansas	1,754,250	1,294,900	1,985,950	1,457,450
California	430,650	388,950	454,200	414,150
Florida	115,000	106,600	116,100	91,950
Georgia	1,870,050	1,722,250	1,944,900	1,791,900
Kansas	197,050	150,950	179,100	165,200
Louisiana	324,050	219,250	336,550	229,050
Mississippi	1,216,400	771,250	1,178,550	730,850
Missouri	1,024,100	754,050	911,950	694,950
New Mexico	62,450	58,700	44,600	31,850
North Carolina	760,250	617,350	826,300	677,300
Oklahoma	263,850	649,500	168,750	534,050
South Carolina	381,650	333,150	337,700	291,250
Tennessee	535,950	342,500	545,550	350,550
Texas	4,003,750	5,142,950	4,208,300	5,392,550
Virginia	206,350	163,300	220,800	178,900
United States	14,074,950	13,539,200	14,383,050	13,864,250

[For complete report click here.](#)

Supply and Demand Report

The following information was excerpted from the World Agricultural Supply and Demand Estimates report, released on May 12, 2026.

May 2026

WASDE - 671 - 17

U.S. Cotton Supply and Use 1/

	2024/25	2025/26 Est.	2026/27 Proj. Apr	2026/27 Proj. May
Area	<i>Million Acres</i>			
Planted	11.18	9.28	NA	9.64 **
Harvested	7.76	7.83	NA	7.38 **
Yield per Harvested Acre	<i>Pounds</i>			
	892	852	NA	866 **
	<i>Million 480 Pound Bales</i>			
Beginning Stocks	3.15	4.00	NA	4.40
Production	14.41	13.90	NA	13.30
Imports	0.00	0.01	NA	0.01
Supply, Total	17.56	17.90	NA	17.71
Domestic Use	1.70	1.60	NA	1.60
Exports, Total	11.90	12.00	NA	12.30
Use, Total	13.60	13.60	NA	13.90
Unaccounted 2/	-0.04	-0.10	NA	-0.10
Ending Stocks	4.00	4.40	NA	3.90
Avg. Farm Price 3/	63.2	63.0	NA	73.0

Note: Reliability calculations at end of report. 1/ Upland and extra-long staple; marketing year beginning August 1. Totals may not add due to rounding. 2/ Reflects the difference between the previous season's supply less total use and ending stocks. 3/ Cents per pound for upland cotton. **Planted area as reported in March 31, 2026 Prospective Plantings. Harvested area based on 10-year average abandonment by region, with the Southwest adjusted to reflect moisture conditions. Yield based on 5-year average yields by region.

[For complete report click here.](#)

Cotton Production

The following information was excerpted from the National Agricultural Statistics Services Crop Production report, released on May 12, 2026

Cotton Area Planted, Harvested, and Yield by Type – States and United States: 2024 and 2025

Type and State	Area planted		Area harvested		Yield per acre	
	2024	2025	2024	2025	2024	2025
	(1,000 acres)	(1,000 acres)	(1,000 acres)	(1,000 acres)	(pounds)	(pounds)
Upland						
Alabama	400.0	290.0	396.0	285.0	816	948
Arizona	96.0	87.0	95.0	86.0	1,299	1,429
Arkansas	650.0	520.0	640.0	515.0	1,341	1,239
California	22.0	18.0	21.7	17.9	1,659	2,199
Florida	85.0	61.0	82.0	60.0	697	880
Georgia	1,100.0	835.0	1,080.0	825.0	858	1,033
Kansas	131.0	102.0	124.0	77.0	778	966
Louisiana	155.0	90.0	148.0	80.0	1,070	1,350
Mississippi	520.0	330.0	515.0	325.0	1,157	1,167
Missouri	400.0	355.0	380.0	340.0	1,320	1,084
New Mexico	42.0	30.0	28.0	24.0	686	780
North Carolina	410.0	285.0	400.0	275.0	940	1,115
Oklahoma	435.0	390.0	185.0	350.0	701	912
South Carolina	225.0	170.0	221.0	167.0	860	992
Tennessee	265.0	205.0	250.0	190.0	1,052	889
Texas	5,950.0	5,300.0	2,900.0	4,000.0	667	628
Virginia	91.0	73.0	90.0	72.0	1,136	1,127
United States	10,977.0	9,141.0	7,555.7	7,688.9	886	842
American Pima						
Arizona	14.0	15.5	14.0	15.5	1,029	898
California	145.0	92.0	142.0	91.0	1,237	1,683
New Mexico	15.0	13.0	14.5	12.9	794	819
Texas	33.0	21.0	30.0	19.0	816	884
United States	207.0	141.5	200.5	138.4	1,128	1,405
All						
Alabama	400.0	290.0	396.0	285.0	816	948
Arizona	110.0	102.5	109.0	101.5	1,264	1,348
Arkansas	650.0	520.0	640.0	515.0	1,341	1,239
California	167.0	110.0	163.7	108.9	1,293	1,767
Florida	85.0	61.0	82.0	60.0	697	880
Georgia	1,100.0	835.0	1,080.0	825.0	858	1,033
Kansas	131.0	102.0	124.0	77.0	778	966
Louisiana	155.0	90.0	148.0	80.0	1,070	1,350
Mississippi	520.0	330.0	515.0	325.0	1,157	1,167
Missouri	400.0	355.0	380.0	340.0	1,320	1,084
New Mexico	57.0	43.0	42.5	36.9	723	793
North Carolina	410.0	285.0	400.0	275.0	940	1,115
Oklahoma	435.0	390.0	185.0	350.0	701	912
South Carolina	225.0	170.0	221.0	167.0	860	992
Tennessee	265.0	205.0	250.0	190.0	1,052	889
Texas	5,983.0	5,321.0	2,930.0	4,019.0	669	629
Virginia	91.0	73.0	90.0	72.0	1,136	1,127
United States	11,184.0	9,282.5	7,756.2	7,827.3	892	852

[For complete report click here.](#)

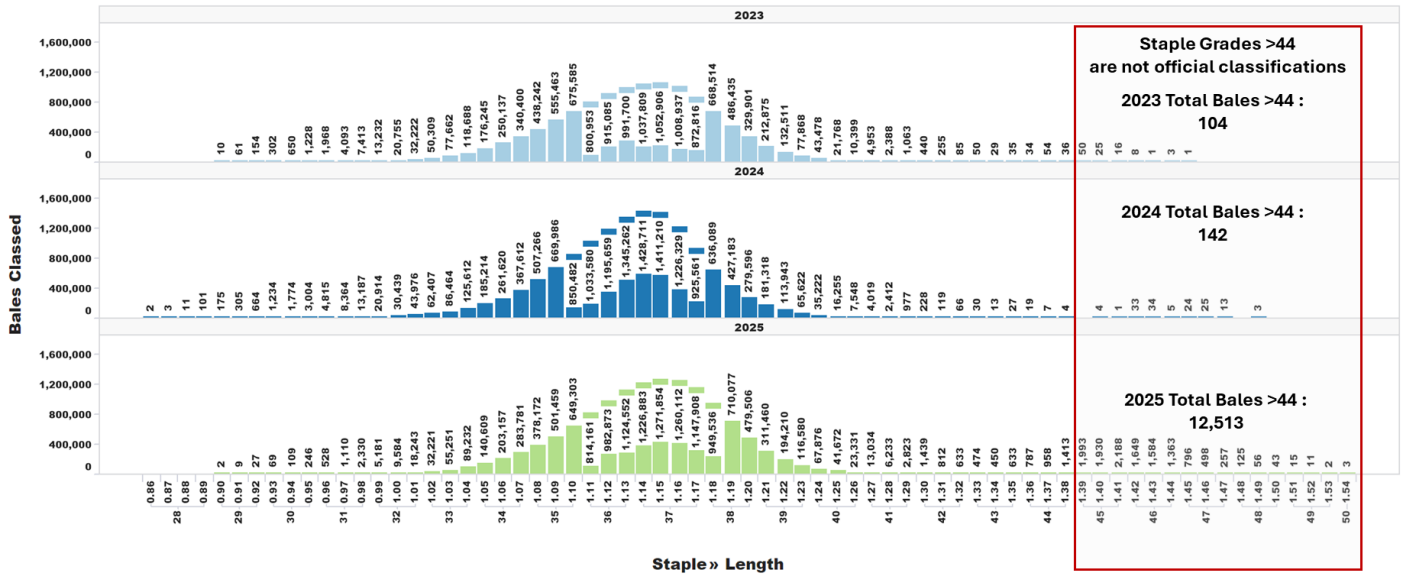
U.S. Upland Cotton Crop Staple Distribution

The official staple lengths for U.S. Upland Cotton, measured in 32nds of an inch, range from "24" to "44 & +". Currently, the longest staple included in the AMS Cotton Market News' weekly quality reports is the "40 & +" designation. Market News is in the process of updating its weekly reports to include all official staple length designations.

For more detailed information, AMS Cotton Market News posts daily per-bale quality data, which includes the instrument measurement for length in inches. You can find this data by office (<https://mymarketnews.ams.usda.gov/viewReport/3471>) and state (<https://mymarketnews.ams.usda.gov/viewReport/3472>). Using this data, Market News has calculated implied staple designations for lengths exceeding 1.35 inches. The accompanying chart shows the number of bales for each staple designation, with staples greater than "44" represented as implied staple lengths. Implied staple lengths are calculated and provided for informational purposes only and are not official designations.

Staple Distribution of U.S. Upland Cotton: 2023-2025 Crops (Classed through May 14, 2026)

Official Staple Grade (28-44), Unofficially Assigned Staple Grade (45-48)



Number of Bales in Certificated Stocks

Delivery Points	Stocks as of 5-14-2026	Awaiting Review	Non-Rain Grown Cotton
Dallas/FT. Worth, TX	160,083	0	0
Galveston, TX	12,044	0	0
Greenville, SC	0	0	0
Houston, TX	20,975	0	0
Memphis, TN	12	0	0
Total	193,114	0	0

World market prices for upland cotton, in cents per pound, in effect from 12:01 a.m., EDT, Friday through midnight, EDT, Thursday

Description	2025-2026					
	Apr	Apr	Apr	May	May	May
	10-16	17-23	24-30	01-07	08-14	15-21
Adjusted world price 1/	58.74	61.61	65.26	65.66	69.59	71.87
Course count adjustment	0.00	0.00	0.00	0.00	0.00	0.00
Loan Deficiency Payment (LDP)	0.00	0.00	0.00	0.00	0.00	0.00
Fine count adjustment 2024	0.00	0.00	0.00	0.00	0.00	0.00
Fine count adjustment 2025	0.00	0.00	0.00	0.00	0.00	0.00

1/ Color 41, leaf 4, staple 34, mike 35-36 & 43-49, strength readings of 26.0-28.9 grams per tex, length uniformity of 80.0-81.9 percent.

Source: Farm Service Agency, USDA.

Description	2024-2025		2025-2026	
	Through May 8, 2025		Through May 14, 2026	
	Week	Mkt. Year	Week	Mkt. Year
Outstanding sales	-	2,684,000	-	2,855,700
Exports	329,200	8,471,500	290,300	8,006,800
Total export commitments	-	11,155,500	-	10,862,500
New sales	154,000	-	50,100	-
Buy-backs and cancellations	31,800	-	2,200	-
Net sales	122,200	-	47,700	-
Sales next marketing year	34,200	1,276,500	29,700	1,416,200

Net sales of Upland totaling 47,700 RB for 2025/2026--a marketing-year low--were down 61 percent from the previous week and 66 percent from the prior 4-week average. Increases primarily for Vietnam (31,800 RB, including 500 RB switched from Japan and decreases of 1,200 RB), Indonesia (4,100 RB, including 1,300 RB switched from Japan), Turkey (2,700 RB), Pakistan (2,700 RB, including 700 RB switched from Vietnam and decreases of 800 RB), and Thailand (2,300 RB), were offset by reductions for Japan (1,900 RB). Net sales of 29,700 RB for 2026/2027 primarily for Vietnam (13,800 RB), Mexico (8,800 RB), Bangladesh (4,400 RB), Guatemala (2,200 RB), and Indonesia (1,500 RB), were offset by reductions for Pakistan (2,200 RB). Exports of 290,300 RB were down 11 percent from the previous week and 12 percent from the prior 4-week average. The destinations were primarily to Vietnam (84,100 RB), Turkey (37,600 RB), Bangladesh (27,100 RB), China (26,500 RB), and Pakistan (22,600 RB). Net sales of Pima totaling 9,300 RB for 2025/2026 were down 19 percent from the previous week and 51 percent from the prior 4-week average. Increases were primarily for India (5,900 RB), Peru (2,300 RB), Pakistan (400 RB), Thailand (300 RB), and Japan (200 RB). Net sales of 7,900 RB for 2026/2027 were reported for China (7,800 RB) and Japan (100 RB). Exports of 12,100 RB were down 18 percent from the previous week, but up 12 percent from the prior 4-week average. The destinations were primarily to India (5,400 RB), China (2,900 RB), Vietnam (2,300 RB), Pakistan (900 RB), and Japan (400 RB).

Source: Export Sales Reporting Division, Foreign Agricultural Service, USDA.

May 14, 2026

NOTE: Data may not add due to rounding.

American Pima Spot Quotations

American Pima quotations are for cotton equal to the Official Standards, net weight, in mixed lots, UD Free, FOB warehouse. 1/

<i>AMERICAN PIMA SPOT QUOTATIONS</i>					
Color	Leaf	Staple			
		44	46	48	50
1	1	140.75	146.50	148.25	148.25
	2	140.50	146.25	148.00	148.00
	3	133.75	141.50	142.50	142.50
	4				
	5				
	6				
2	1	140.50	146.25	148.00	148.00
	2	140.25	146.00	147.75	147.75
	3	133.50	141.25	142.25	142.25
	4	123.50	131.75	132.75	132.75
	5				
	6				
3	1	132.25	140.00	141.00	141.00
	2	129.75	137.50	138.50	138.50
	3	127.50	135.25	136.25	136.25
	4	118.50	126.25	127.25	127.25
	5	102.50	109.75	110.75	110.75
	6				
4	1	113.50	121.25	123.00	123.00
	2	113.25	121.00	122.25	122.25
	3	112.00	119.75	120.75	120.75
	4	107.00	114.75	115.75	115.75
	5	95.75	103.50	104.50	104.50
	6				
5	1				
	2	90.25	100.25	100.25	100.25
	3	90.25	99.75	100.00	100.00
	4	90.25	94.25	94.25	94.25
	5	90.00	94.00	94.00	94.00
	6				
6	1				
	2	82.50	85.50	85.50	85.50
	3	82.50	85.50	85.50	85.50
	4	82.50	85.50	85.50	85.50
	5	82.25	85.25	85.25	85.25
	6	81.75	84.75	84.75	84.75

The current Pima spot quotations represent prices from local sales, export sales, and offerings last reported on March 31, 2026.

Mike

Range	Diff.
26 & Below	-2000
27-29	-1500
30-32	-1000
33-34	-500
35 & Above	0

Strength

<i>(Grams per Tex)</i>	
Range	Diff.
34.9 & Below	-1650
35.0 – 35.9	-1400
36.0 – 36.9	-1150
37.0 – 37.9	-800
38.0 – 38.9	0
39.0 – 39.9	0
40.0 & Above	0

Extraneous Matter

Type - Level	Diff.
Prep - Level 1	-810
Prep - Level 2	-1095
Other - Level 1	-715
Other - Level 2	-1035
Plastic - Level 1	-4000
Plastic - Level 2	-4000

1/ Pima spot quotations for color-leaf-staple combinations not quoted will be included as sales of those qualities which are reported.