

DAILY DIRECT HOGS PLANT DELIVERED as of 1:30 PM

Negotiated Barrow and Gilt:	Carcass Base Price		Live Price	
<u>NATIONAL - AMS 2675/LM_HG203:</u>				
Range:	\$90.00	\$95.00	\$62.00	\$75.00
Weighted Average:	\$93.77		\$69.60	
Change from Prior Day:	\$3.07		(-\$1.43)	
Head Count:	636		1,397	

IOWA/MINNESOTA - AMS 2675/LM_HG206:

Weighted Average:	*	*
Change from Prior Day:	*	*

WESTERN CORNBELT - AMS 2675/LM_HG212:

Weighted Average:	*	*
Change from Prior Day:	*	*

EASTERN CORNBELT - AMS 2675/LM_HG210:

Weighted Average:	*	\$72.43
Change from Prior Day:	*	*

*Price not reported due to confidentiality

NATIONAL DAILY PORK REPORT FOB PLANT- AMS 2498/LM_PK602:

Carcass Cutout Values	97.56	Change:	1.96
Primal Loin	94.11		6.37
Primal Butt	136.65		1.98
Primal Picnic	70.22		(-4.36)
Primal Rib	178.06		3.62
Primal Ham	80.25		0.69
Primal Belly	127.73		2.80
Total Loads	353.19		
Pork Cuts	305.85	lds.	
Trim/Process Pork	47.34	lds.	

Weekly USDA By-Product Drop Value (Hog): 4.75 0.07

DAILY HOG SLAUGHTER UNDER FIS - AMS 3208/SJ_LS710

Today (est)	479,000	Saturday:	43,000
Week Ago (est)	461,000		45,000
Year Ago (act)	473,534		39,934
Week to Date (est)	2,407,000		2,450,000
Same Period Last Week (est)	2,401,000		2,446,000
Same Period Last Year (act)	2,391,651		2,431,585

National Daily Direct Hog Prior Day Report - Slaughtered Swine/LM_HG201

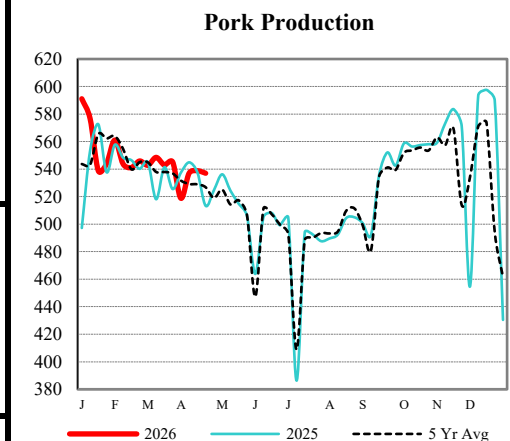
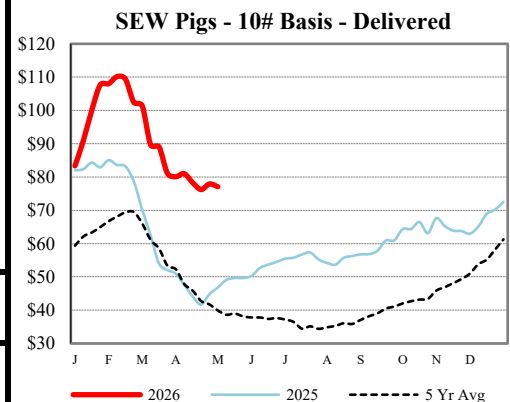
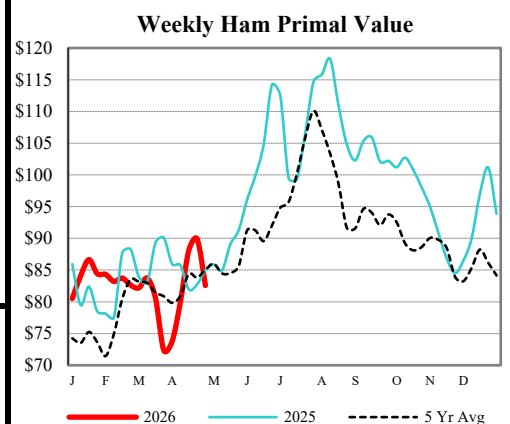
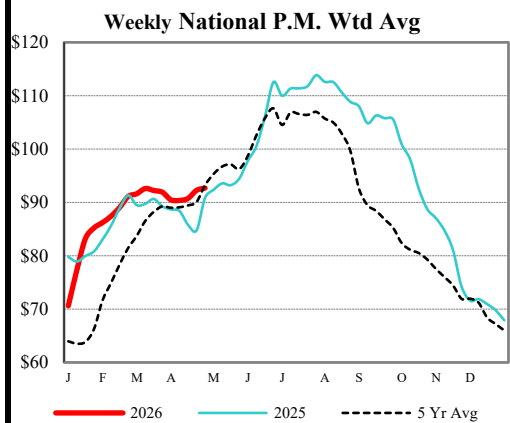
	NEG	OMF	SPMF	OPA	Total
Producer Sold:					
Head Count	3,627	23,243	126,273	80,550	234,692
Carcass Base Price	92.46	92.54	89.11	88.62	89.29
Average Net Price	92.01	95.05	90.60	90.39	90.97

Negotiated Formula included in total *Price not reported due to confidentiality.

US Direct Delivered Feeder Pig Summary for Weekending - AMS 2810

Formula, Cash, & Composite Wtd Avg Prices

		<u>Formula</u>	<u>Cash</u>	<u>Composite</u>
SEW	10-12 lb Basis	62.44	77.08	72.23
Feeder Pigs	40 lb Basis		108.55	108.55



USDA Livestock, Poultry & Grain Market News

Des Moines, Iowa | PH 515-284-4460

Email: Desm.LPGMN@usda.gov

<https://mymarketnews.ams.usda.gov/viewReport/2872>

USDA AMS Livestock, Poultry & Grain Market News