



Weekly Cotton Market Review

Agricultural Marketing Service

Cotton and Tobacco Program ♦ Cotton Market News Division ♦ 3275 Appling Road ♦ Memphis, TN 38133 ♦ 901.384.3016

Mp_cn812

Vol. 107 No. 40
May 8, 2026

Inside this Issue

[Market Overview](#)

[Spot Quotations](#)

[ICE Futures](#)

[Southeastern](#)

[Textile Mill Report](#)

[South Central](#)

[Southwestern](#)

[Western](#)

[Forward Contracting](#)

[Pima Quotations](#)

Featured

[Staple Distribution](#)

[Cotton Market Reports](#)

[Subscribe to this report](#)

[Subscribe to all Cotton Market reports](#)

Spot quotations averaged 375 points higher than the previous week, according to the USDA, Agricultural Marketing Services Cotton and Tobacco Program. Quotations for the base quality of cotton (color 41, leaf 4, staple 34, mike 35-36 and 43-49, strength 27.0-28.9, and uniformity 81.0-81.9) in the seven designated markets, averaged 79.04 cents per pound for the week ending Thursday, May 7, 2026. The weekly average was up from 75.29 cents last week and from 64.83 cents reported in the corresponding period a year ago. Daily average quotations ranged from a low of 78.17 cents on Monday, May 4 to a season high of 80.05 cents on Tuesday, May 5. Spot transactions reported in the Daily Spot Cotton Quotations for the week ended May 7 totaled 18,774 bales. This is compared to 12,050 reported last week and 8,945 bales reported the corresponding week a year ago. Total spot transactions for the season were 1,473,605 bales compared to 947,019 the corresponding week a year ago. The ICE July settlement price ended the week at 83.00 cents, compared to 82.20 cents last week.

41-4-34 Prices								
Date	SE	ND	SD	ETX-STX	WTX-KS-OK	DSW	SJV	7-MKT AVG
May 1	82.19	81.19	81.19	77.44	78.19	77.94	78.19	79.48
May 4	80.67	79.92	79.92	76.17	76.92	76.67	76.92	78.17
May 5	82.55	81.80	81.80	78.05	78.80	78.55	78.80	80.05
May 6	81.80	81.05	81.05	77.30	78.05	77.80	78.05	79.30
May 7	80.50	80.00	80.00	76.25	77.00	76.75	77.00	78.21
31-3-36 Prices								
Date	SE	ND	SD	ETX-STX	WTX-KS-OK	DSW	SJV	7-MKT AVG
May 1	87.94	85.94	85.44	84.19	82.19	83.94	90.59	85.75
May 4	86.42	84.67	84.17	82.92	80.92	82.67	89.32	84.44
May 5	88.30	86.55	86.05	84.80	82.80	84.55	91.20	86.32
May 6	87.55	85.80	85.30	84.05	82.05	83.80	90.45	85.57
May 7	86.25	84.75	84.25	83.00	81.00	82.75	89.40	84.49
Futures Settlement								Far Eastern A Index 1/
Date	May-26	Jul-26	Oct-26	Dec-26	Mar-27	May-27	Current	
May 1	81.85	84.19	85.04	84.56	85.26	85.42	92.05	
May 4	80.58	82.92	83.86	83.68	84.56	84.90	-	
May 5	82.46	84.80	85.59	85.27	86.10	86.37	92.80	
May 6	81.71	84.05	85.00	84.76	85.51	85.78	94.55	
May 7	Holiday	83.00	84.02	83.69	84.41	84.71	93.80	
Spot Transactions								
Date	SE	ND	SD	ETX-STX	WTX-KS-OK	DSW	SJV	PIMA
May 1	0	0	0	0	5,415	0	0	0
May 4	528	0	0	0	4,228	0	0	0
May 5	0	0	0	0	182	0	0	0
May 6	0	0	0	0	7,483	0	0	255
May 7	636	0	0	0	302	0	0	431
Weekly Totals	1,164	0	0	0	17,610	0	0	686

Source: USDA, AMS, Cotton and Tobacco Program, 1/ Cotlook

Southeastern Markets Regional Summary

Danny Pino ♦ Macon, GA ♦ 478.752.3560 ♦ Danny.Pino@usda.gov

Spot cotton trading was slow. Supplies were moderate. Demand was good. Producer offerings were moderate. Average local spot prices were higher. Trading of CCC-loan equities was inactive. Producers took advantage of higher ICE futures prices to forward contract a moderate volume of 2026-crop cotton.

Intermittent rainfall was received across the lower Southeast with periods of sunny weather observed. Daytime high temperatures were in the 70s and 80s. Nighttime lows were in the 50s and 60s. Moderate precipitation was received throughout Alabama, the Florida Panhandle, and west Georgia throughout the week. Rainfall totals measured from one to three inches, with locally heavier accumulations recorded in some areas. Though beneficial, rainfall did little more than to help stabilize drought conditions across much of Georgia and northern Florida, where soil moisture and stream flows remained very low, as stated in the U.S. Drought Monitor reported on May 7. According to the National Agricultural Statistical Service's (NASS) Crop Progress report, in Alabama, the crop was 28 percent planted and 11 percent planted in Georgia.

Thunderstorms over the weekend and later in the week brought light to moderate precipitation to areas

of the upper Southeast during the period. Daytime high temperatures varied from the 60s to the 80s. Nighttime lows were in the 40s and 50s. Widespread showers brought around one to two inches of moisture to cotton-growing areas across the eastern Carolinas and Virginia. Drought conditions remained stable in South Carolina, but drier conditions across North Carolina and Virginia resulted in some expansion of drought and abnormal dryness, as stated in the U.S. Drought Monitor released on May 7. According to the NASS Crop Progress report, in North Carolina and Virginia the crop was 12 percent planted and 11 percent planted in South Carolina.

[Textile Mill](#)

Domestic mill buyers inquired for a moderate volume of color 41, leaf 4, and staple 35 and longer for May through December delivery. No sales and no additional inquiries were reported. Yarn demand was moderate to good. Mill buyers maintained a cautious undertone as they balanced raw cotton orders with finished product demand.

Demand through export channels was moderate. Agents throughout the Far East inquired for any discounted styles of cotton.

[Trading](#)

- A moderate volume of color mostly 41, leaf 3 and 4, staple 35-37, mike 37-52, strength 28-32, and uniformity 81-83 sold for around 25 points off ICE July futures, FOB car/truck (Rule 5, compression charges paid).
- A moderate volume of color 31 and 41, leaf 5 and better, staple 34-37, strength 29-32, and uniformity 81-83 sold for around 100 points off ICE July futures, same terms as above.

South Central Markets Regional Summary

Aerielle McDaniel ♦ Memphis, TN ♦ 901.384.3016 ♦ Aerielle.McDaniel@usda.gov

North Delta

Spot cotton trading was inactive. Supplies of available cotton were light. Producer offerings were light. Demand was very light. Trading of CCC-loan equities were inactive. Average local spot prices were higher. A widespread interest in forward contracting was reported. According to local experts acreage is estimated to be down compared to last year.

Intervals of sunny and cloudy skies characterized the weather pattern during the period. Daytime high temperatures fluctuated from the 60s to the 80s. Warm temperatures plummeted into the 50s mid-week due to scattered thunderstorms. Nighttime lows were in the 40s and 50s. Growers hoped for warmer temperatures in the nearby forecast. Flood warnings were issued by the National Weather Service in areas of Arkansas and Tennessee. The area received trace amounts to around one-quarter and two inches of rain. Gusty winds helped dry saturated soils after storms. Fieldwork was hampered but is expected to resume soon. According to the Drought Monitor report, drought conditions have intensified to mostly severe to extreme in Arkansas and Tennessee. As reported in the Crop Progress Report released on Monday, May 4, cotton planted in Arkansas was at 25 percent, 17 in Missouri, and at 25 percent in Tennessee. All areas are well ahead of the five-year average. The Standardization & Engineering Division hosted the 2026 Guide Box Matching at the USDA Cotton & Tobacco Program headquarters, in Memphis, TN.

South Delta

Spot cotton trading was inactive. Supplies of available cotton were light. Producer offerings were light. Demand was light. Average local spot prices were higher. Trading of CCC-loan equities were inactive. A widespread interest in forward contracting was reported.

Partly cloudy skies prevailed during the reporting period. Daytime high temperatures were in the 70s and 80s. Nighttime lows were in the 50s and 60s. Scattered thunderstorms migrated through the region mid-week. Flood warnings were issued by the National Weather Service for parts of Mississippi. Accumulated precipitation totals measured from trace amounts to around two inches of rain. More rain is needed to replenish dry underground aquifers. No fieldwork was reported. Producers hoped that field conditions would improve to avoid replanting. According to the U.S. Drought Monitor report, drought has intensified to mostly severe to extreme in Louisiana. In Mississippi conditions remained mostly abnormal to severe. The Crop Progress Report, released on May 4, reported cotton planted in Louisiana at 15 percent and in Mississippi at 30 percent. Mississippi was above the five-year average but Louisiana was below the five-year average. Industry members attended the 2026 Guide Box Matching hosted by the USDA Cotton & Tobacco Program's Standardization & Engineering Division.

Trading

North Delta

- No trading activity was reported.

South Delta

- No trading activity was reported.

Southwestern Markets Regional Summary

Bethany Lindgren ♦ Memphis, TN ♦ 901.384.3016 ♦ Bethany.Lindgren@usda.gov
Jane Byers-Angle ♦ Lubbock, TX ♦ 806.283.9389 ♦ Jane.Byers-Angle@usda.gov

[East Texas-South Texas](#)

Spot cotton trading was inactive. Supplies and producer offerings were light. Demand was light. Average local spot prices were higher. Moderate levels of forward contracting activity were reported. Trading of CCC-loan equities was inactive. Foreign mill inquiries were light to moderate. Interest was best from Korea, India, and Vietnam.

Heavy rainfall, including thunder and lightning, was reported in East Texas. Daytime high temperatures were in the 70s to 80s. Nighttime lows were in the 50s to 70s. Total accumulated precipitation ranged from one-quarter of an inch to over one inch of moisture. Continuously water-logged fields and cooler nighttime temps are expected to slow plant growth, according to local experts. Stages of development in the central Blacklands range from emergence up to the fourth true leaf stage. Some damage was reported after hailstorms last week, but the severity of that damage is unknown at this time. Treatments were applied for pests as needed. Gusting winds and dry conditions were observed in the lower Rio Grande Valley (RGV), while areas of the Upper Coast and Coastal Bend received light showers in the period. Daytime high temperatures were in the 70s to 90s across the South Texas region. Nighttime temperatures were in the 50s to the 70s. Accumulated moisture totals ranged from trace amounts up to over one and one-half inches of rain. The crop made good progress. The first blooms were reported in fields in the lower RGV. Extension experts monitored populations of pests and recommended treatments as necessary.

[West Texas-Kansas-Oklahoma](#)

Spot cotton trading was moderate. Supplies were moderate. Producer offerings were light. Demand was light. Average local spot prices were higher. Producer interest in forward contracting was moderate. Trading of CCC-loan equities was active. Foreign mill inquiries were light to moderate. Interest was best from India, Korea, and Vietnam.

Daytime temperatures across Texas ranged from the mid-50s to the low 90s, while overnight lows varied from the 30s into the 70s, depending on location. A widespread rain event occurred early in the reporting period; however, many cotton-growing areas around Lubbock received little to no moisture. Heavier rainfall totals were reported in the Southern Rolling Plains. According to the National Weather Service, several locations recorded one of their top five to ten driest Aprils since 1911. A few fields were sprayed and pre-watered on the Southern High Plains. Planting activities expanded in the Northern High Plains on irrigated fields. Early planted fields had emerged. Producers continued managing planting challenges due to persistent drought conditions and rising fertilizer and diesel costs.

A cold front early in the period in Kansas dropped temperatures into the low 50s, but daytime highs rebounded into the upper 80s. Nightly lows were in the 30s to 50s. Cooler than normal temperatures ushered in some storms that brought a light amount of rainfall. Precipitation was scattered and not all cotton-growing areas received moisture. Amounts were heavier in southcentral Kansas. Producers monitored the weather patterns and soil temperatures ahead of planting, which was initiated. Industry was encouraged by market prices, and more acres were committed to cotton sowing. Reports indicated that some struggled to book planting seed.

Daytime temperatures across Oklahoma ranged from the low 70s to the mid-90s, while overnight lows fell into the 40s and 60s. Periods of variable cloud cover, sunshine, and windy conditions contributed to higher evaporation rates. Ginning operations continued and were expected to wrap up during the next reporting period. Dry planting had begun on a limited number of acres, and producers were hopeful that the forecasted El Niño rains would help with stand establishment. Discussions on the new Dicamba formulation restrictions continued, and sign-up for the mandatory training was underway.

Southwestern Markets Regional Summary

Bethany Lindgren ♦ Memphis, TN ♦ 901.384.3016 ♦ Bethany.Lindgren@usda.gov

Jane Byers-Angle ♦ Lubbock, TX ♦ 806.698.4648 ♦ Jane.Byers-Angle@usda.gov

Trading

East Texas/South Texas

- No trading activity was reported.

West Texas, Kansas, & Oklahoma

- In Texas, mixed lots containing a heavy volume of color 42 and better, leaf 4 and better, staple 35-37, mike 35-53, strength 26-33, and uniformity 78-83 sold for 77.75 cents per pound, FOB car/truck, (compression charged not paid).
- A light volume of 2022 to 2024 old-crop cotton containing color 21-41, leaf 2-5, staple 37-40, mike averaging 33.6, strength averaging 33.0, uniformity averaging 80.1, and 50 percent extraneous matter sold for around 66.50 cents, same terms as above.
- In Kansas, a lot containing a heavy volume of color 41 and better, leaf 4 and better, staple 35-39, mike 35-49, strength 26-35, and uniformity 78-83 traded for around 75.00 cents, same terms as above.
- In Oklahoma, lots containing a moderate volume of color 21-41, leaf 3-5, staple 37-41, mike 38-47, strength 28-33, and uniformity 79-84 sold for 77.00 to 79.75 cents, same terms as above.
- A heavy volume of CCC-loan equities traded for 15.00 to 20.75 cents.

Western Markets Regional Summary

Bethany Lindgren ♦ Memphis, TN ♦ 901.384.3016 ♦ Bethany.Lindgren@usda.gov

[Desert Southwest \(DSW\)](#)

Spot cotton trading was inactive. Supplies and producer offerings were light. Demand was light. Producer interest in forward contracting was light. Average local spot prices were higher. No domestic mill activity was reported. Foreign mill inquiries were light.

Light showers and dreary weather early in the period retreated to sunny and dry conditions in Arizona. Daily temperatures in the 70s and 80s are expected to rebound into the 90s next week. Nighttime lows were in the 50s to 60s. According to the National Agricultural Statistics Service's Crop Progress report, released on May 4, cotton planted was 67 percent complete in Arizona. Planting continued in central Arizona and Safford, AZ. The crop made good progress. Over one-half of an inch of precipitation was reported in El Paso, TX during the week, temporarily slowing planting activities. Planting continued in Las Cruces, NM.

[San Joaquin Valley \(SJV\)](#)

Spot cotton trading was inactive. Supplies and demand were light. Light volumes of forward contracting were reported. Domestic mill activity was light. Average local spot prices were higher. Foreign mill inquiries were light.

Dry and sunny conditions returned to the SJV this week. Daytime highs in the 70s climbed into the 90s, with nighttime lows in the 50s. Cotton acres are expected to be down this season, according to the California Cotton Ginners and Growers Association's Preliminary Planting Intentions survey, due to reduced water allocations and other critical determining factors. Acreage is predicted to see a five percent

decrease this season. Some fields were replanted in the Sacramento Valley due to cold and wet soil conditions. As the warmer and dry conditions returned this week, stands were developing well.

[American Pima \(AP\)](#)

Spot cotton trading was slow. Supplies were moderate. Demand was light. Light forward contracting was reported. Domestic mill activity was reported. Average local spot prices were steady. Foreign mill inquiries were light.

Light rain activity gave way to sunshine and dry conditions in Arizona. Daily temperatures were in the 70s and 80s. Nighttime low temperatures in the 50s warmed into the 60s. The crop made good progress. According to local experts, some issues have been reported with seed germination in specific varieties, resulting in empty patches in some fields. Due to reduced water allocations and other outside factors, planted cotton acres are expected to be down this season by five percent for Pima and Upland, according to the California Cotton Ginners and Growers Association's Preliminary Planting Intentions survey. Over one-half of an inch of precipitation was reported in El Paso, TX during the week, slowing planting activities temporarily. Planting continued in Las Cruces, NM.

[Trading](#)

Desert Southwest

- No trading activity was reported.

San Joaquin Valley

- No trading activity was reported.

American Pima

- A heavy volume was sold to mills.

Forward Contracting

Upland cotton growers in the United States had booked 9 percent of their expected acreage by the end of April this season. This was 8 percent above the percentage of acreage booked through the same period last year. Contracting has been most active in the South Central and Southwestern states, where 10 percent of the crop had been booked in both regions. In the Southeastern states, 5 percent was under contract. Western states' growers had less than one percent reported forward contracting this year and the previous year. These estimates were based on the National Agricultural Statistics Board's March Prospective Plantings report and information collected by the Cotton and Tobacco Program's Market News Division.



Cotton and Tobacco Program
3275 Appling Road, Memphis, TN 38133
(901) 384-3018

Email us with accessibility issues with this report.

Cotton Forward Contracting Report
Forward contracting of Upland cotton by growers
As of April 30, crops of 2017-2026
and prospective plantings, 2026 crop 1/

States	Cotton Crops										Prospective Plantings 2/ 1,000 acres
	2017	2018	2019	2020	2021	2022	2023	2024	2025	2026	
	Pct.	Pct.	Pct.	Pct.	Pct.	Pct.	Pct.	Pct.	Pct.	Pct.	
Alabama	7	4	2	-	4	11	*	8	-	6	290
Florida	4	2	-	-	4	22	-	8	-	5	65
Georgia	14	13	3	*	12	10	1	1	-	6	900
North Carolina	7	6	1	*	5	15	1	5	-	5	340
South Carolina	8	2	2	-	2	12	1	*	5	3	170
Virginia	16	15	3	1	13	18	1	1	-	5	70
Southeastern States	11	9	2	*	8	12	1	3	*	5	1,835
Arkansas	8	26	5	-	9	48	*	7	*	13	470
Louisiana	36	13	20	-	-	11	-	2	-	8	110
Mississippi	7	8	2	-	5	9	-	*	-	1	300
Missouri	4	3	-	-	*	22	*	6	-	18	360
Tennessee	7	3	2	-	3	20	-	2	-	2	250
South Central States	10	11	4	-	5	24	*	4	*	10	1,490
Kansas	-	-	*	-	-	-	-	1	-	*	100
Oklahoma /3	1	1	*	1	-	-	*	*	-	*	450
Texas	4	3	-	2	4	8	1	2	1	11	5,500
Southwestern States	4	3	*	1	4	7	1	2	1	10	6,050
Arizona	5	2	-	-	35	1	*	-	-	1	80
California	-	-	-	-	-	-	-	-	-	-	25
New Mexico	-	-	-	-	-	-	-	-	-	-	30
Western States	2	1	-	-	23	1	*	-	-	*	135
United States	6	5	1	1	5	11	1	3	1	9	9,510

1/ Contracting estimates do not include cotton consigned to marketing organizations but do include cotton contracted with marketing organizations.

2/ Agricultural Statistics Board, NASS, USDA. 3/ Includes Kansas, 2017-2017 crops. * Less than 0.5 percent.

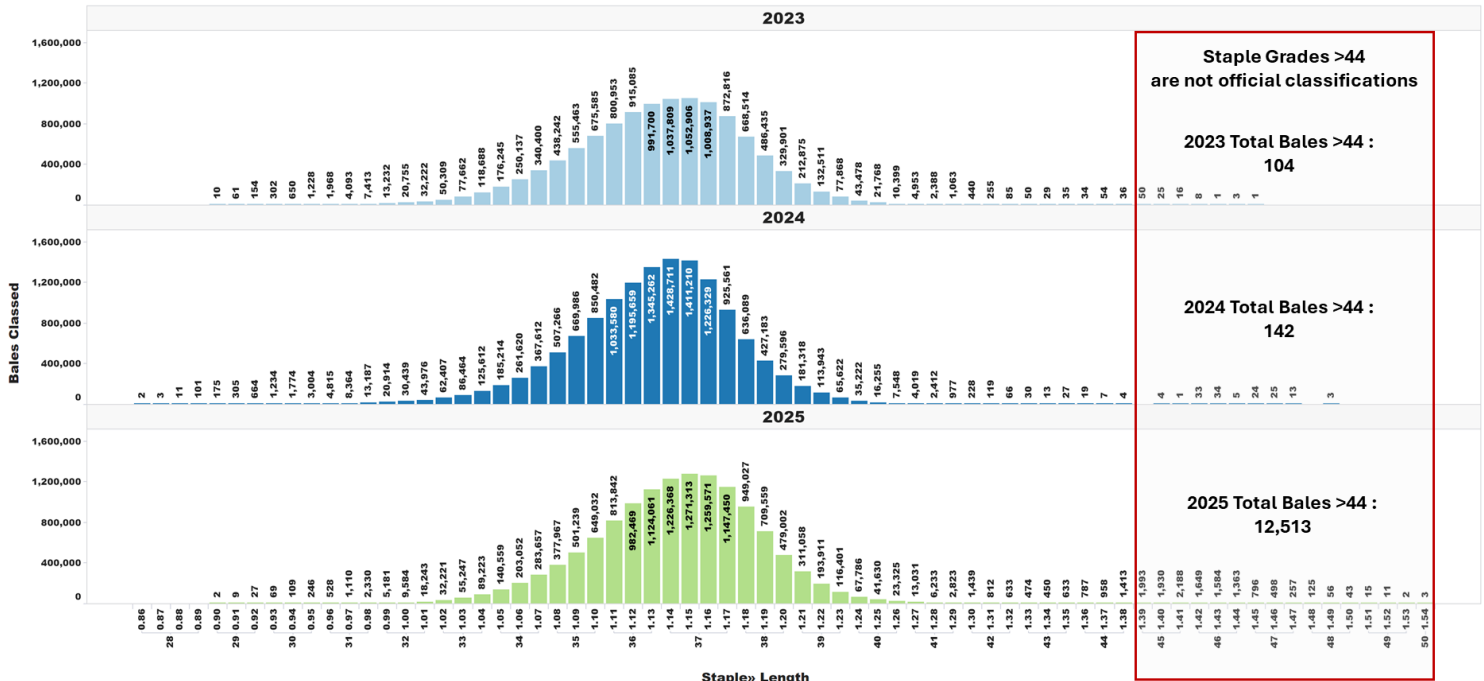
U.S. Upland Cotton Crop Staple Distribution

The official staple lengths for U.S. Upland Cotton, measured in 32nds of an inch, range from "24" to "44 & +". Currently, the longest staple included in the AMS Cotton Market News' weekly quality reports is the "40 & +" designation. Market News is in the process of updating its weekly reports to include all official staple length designations.

For more detailed information, AMS Cotton Market News posts daily per-bale quality data, which includes the instrument measurement for length in inches. You can find this data by office (<https://mymarketnews.ams.usda.gov/viewReport/3471>) and state (<https://mymarketnews.ams.usda.gov/viewReport/3472>). Using this data, Market News has calculated implied staple designations for lengths exceeding 1.35 inches. The accompanying chart shows the number of bales for each staple designation, with staples greater than "44" represented as implied staple lengths. Implied staple lengths are calculated and provided for informational purposes only and are not official designations.

Staple Distribution of U.S. Upland Cotton: 2023-2025 Crops (Classed through May 7, 2026)

Official Staple Grade (28-44), Unofficially Assigned Staple Grade (45-48)



Number of Bales in Certificated Stocks

Delivery Points	Stocks as of 5-7-2026	Awaiting Review	Non-Rain Grown Cotton
Dallas/FT. Worth, TX	151,979	0	0
Galveston, TX	10,758	0	0
Greenville, SC	0	0	0
Houston, TX	19,383	0	0
Memphis, TN	12	0	0
Total	182,132	0	0

World market prices for upland cotton, in cents per pound, in effect from 12:01 a.m., EDT, Friday through midnight, EDT, Thursday

Description	2025-2026					
	Apr	Apr	Apr	Apr	May	May
	03-09	10-16	17-23	24-30	01-07	08-14
Adjusted world price 1/	56.99	58.74	61.61	65.26	65.66	69.59
Course count adjustment	0.00	0.00	0.00	0.00	0.00	0.00
Loan Deficiency Payment (LDP)	0.00	0.00	0.00	0.00	0.00	0.00
Fine count adjustment 2024	0.00	0.00	0.00	0.00	0.00	0.00
Fine count adjustment 2025	0.00	0.00	0.00	0.00	0.00	0.00

1/ Color 41, leaf 4, staple 34, mike 35-36 & 43-49, strength readings of 26.0-28.9 grams per tex, length uniformity of 80.0-81.9 percent.
Source: Farm Service Agency, USDA.

Description	2024-2025		2025-2026	
	Through May 1, 2025		Through April 30, 2026	
	Week	Mkt. Year	Week	Mkt. Year
Outstanding sales	-	2,891,000	-	3,098,300
Exports	394,900	8,142,300	327,500	7,716,500
Total export commitments	-	11,033,300	-	10,814,800
New sales	87,300	-	126,200	-
Buy-backs and cancellations	21,600	-	2,500	-
Net sales	65,800	-	123,300	-
Sales next marketing year	37,400	1,242,200	48,400	1,386,500

Net sales of Upland totaling 123,300 RB for 2025/2026 were down 24 percent from the previous week and 35 percent from the prior 4-week average. Increases primarily for Pakistan (38,800 RB, including decreases of 100 RB), India (27,200 RB), Vietnam (18,800 RB, including 1,900 RB switched from South Korea and decreases of 1,200 RB), Indonesia (14,400 RB, including 9,700 RB switched from Vietnam), and Bangladesh (9,100 RB, including decreases of 1,000 RB), were offset by reductions for South Korea (1,900 RB). Net sales of 48,400 RB for 2026/2027 reported for Guatemala (35,200 RB) and Indonesia (19,000 RB), were offset by reductions for Vietnam (5,800 RB). Exports of 327,500 RB were down 15 percent from the previous week and 1 percent from the prior 4-week average. The destinations were primarily to Vietnam (135,000 RB), Bangladesh (29,600 RB), Pakistan (29,100 RB), Turkey (27,700 RB), and China (20,400 RB). Net sales of Pima totaling 11,500 RB for 2025/2026 were down 47 percent from the previous week and 35 percent from the prior 4-week average. Increases were primarily for India (6,700 RB), Egypt (1,800 RB), Italy (800 RB), Thailand (600 RB), and Pakistan (600 RB). Total net sales of 1,300 RB for 2026/2027 were for Egypt. Exports of 14,800 RB were down 17 percent from the previous week, but up 52 percent from the prior 4-week average. The destinations were primarily to Vietnam (8,400 RB), India (2,700 RB), China (2,200 RB), Bangladesh (500 RB), and Colombia (400 RB).

Source: Export Sales Reporting Division, Foreign Agricultural Service, USDA.

May 7, 2026

NOTE: Data may not add due to rounding.

American Pima Spot Quotations

American Pima quotations are for cotton equal to the Official Standards, net weight, in mixed lots, UD Free, FOB warehouse. 1/

AMERICAN PIMA SPOT QUOTATIONS

Color	Leaf	Staple			
		44	46	48	50
1	1	140.75	146.50	148.25	148.25
	2	140.50	146.25	148.00	148.00
	3	133.75	141.50	142.50	142.50
	4				
	5				
	6				
2	1	140.50	146.25	148.00	148.00
	2	140.25	146.00	147.75	147.75
	3	133.50	141.25	142.25	142.25
	4	123.50	131.75	132.75	132.75
	5				
	6				
3	1	132.25	140.00	141.00	141.00
	2	129.75	137.50	138.50	138.50
	3	127.50	135.25	136.25	136.25
	4	118.50	126.25	127.25	127.25
	5	102.50	109.75	110.75	110.75
	6				
4	1	113.50	121.25	123.00	123.00
	2	113.25	121.00	122.25	122.25
	3	112.00	119.75	120.75	120.75
	4	107.00	114.75	115.75	115.75
	5	95.75	103.50	104.50	104.50
	6				
5	1				
	2	90.25	100.25	100.25	100.25
	3	90.25	99.75	100.00	100.00
	4	90.25	94.25	94.25	94.25
	5	90.00	94.00	94.00	94.00
	6				
6	1				
	2	82.50	85.50	85.50	85.50
	3	82.50	85.50	85.50	85.50
	4	82.50	85.50	85.50	85.50
	5	82.25	85.25	85.25	85.25
	6	81.75	84.75	84.75	84.75

The current Pima spot quotations represent prices from local sales, export sales, and offerings last reported on March 31, 2026.

Mike

Range	Diff.
26 & Below	-2000
27-29	-1500
30-32	-1000
33-34	-500
35 & Above	0

Strength

(Grams per Tex)	
Range	Diff.
34.9 & Below	-1650
35.0 – 35.9	-1400
36.0 – 36.9	-1150
37.0 – 37.9	-800
38.0 – 38.9	0
39.0 – 39.9	0
40.0 & Above	0

Extraneous Matter

Type - Level	Diff.
Prep - Level 1	-810
Prep - Level 2	-1095
Other - Level 1	-715
Other - Level 2	-1035
Plastic - Level 1	-4000
Plastic - Level 2	-4000

1/ Pima spot quotations for color-leaf-staple combinations not quoted will be included as sales of those qualities which are reported.

May 7 2026