

AUCTION SUMMARY

AMS 1245		7,594		Monday	
Joplin Regional Stockyards					
Carthage, MO					
Feeder Steers	500-600 lbs	455.00-540.00	Feeder Heifers	400-500 lbs	465.00-550.00
Medium &	600-700 lbs	410.00-475.00	Medium &	500-600 lbs	402.00-485.00
Large #1	700-800 lbs	374.00-417.00	Large #1	600-700 lbs	370.00-422.50
	800-900 lbs	352.00-371.00		700-800 lbs	333.00-370.00
	900-1000 lbs	321.00-342.00		800-900 lbs	317.00-345.00

AMS 1280		6,500		Monday	
Oklahoma National Stockyards					
Oklahoma City, OK					
Feeder Steers	500-600 lbs	452.00-555.00	Feeder Heifers	400-500 lbs	432.50-532.50
Medium &	600-700 lbs	407.00-465.00	Medium &	500-600 lbs	408.00-462.50
Large #1	700-800 lbs	365.00-396.00	Large #1	600-700 lbs	364.50-417.00
	800-900 lbs	347.00-379.00		700-800 lbs	326.00-377.00
	900-1000 lbs	330.00-348.00		800-900 lbs	330.00-341.00

AMS 2159		4,343		Monday	
Russell Livestock					
Russell, IA					
Feeder Steers	400-500 lbs	532.50-605.00	Feeder Heifers	400-500 lbs	488.00-587.00
Medium &	500-600 lbs	473.00-539.00	Medium &	500-600 lbs	410.00-481.00
Large #1	600-700 lbs	421.00-485.00	Large #1	600-700 lbs	350.00-412.50
	700-800 lbs	377.00-423.75		700-800 lbs	330.00-357.00
	800-900 lbs	364.00-377.50		800-900 lbs	332.25-339.00

CHICAGO MERCANTILE EXCHANGE LIVESTOCK FUTURES SETTLEMENTS Monday

Live Cattle			Feeder Cattle		
		Change			Change
Apr	250.425	2.125	Apr	370.575	2.950
Jun	248.950	3.725	May	367.450	6.550
Aug	245.375	3.725	Aug	368.275	6.500

CHICAGO BOARD OF TRADE GRAIN FUTURES SETTLEMENTS Monday

Corn			Soybeans		
		Change			Change
May	4.6075	0.0575	May	11.7725	0.1350
Jul	4.6925	0.0575	Jul	11.9200	0.1350
Sep	4.7400	0.0550	Aug	11.8425	0.1275

KANSAS CITY BOARD OF TRADE			Wheat		
		Change			Change
			May	6.6725	0.0825
			Jul	6.7525	0.0550
			Sep	6.8675	0.0600

[AMS 2466](#) Monday

5 AREA WKLY ACCUMULATED WTD AVG SLAUGHTER CATTLE PRICE

	Head Count	Avg Weight	Avg Price
Live Steer	19,579	1,580	246.18
Live Heifer	12,291	1,401	246.07
Dressed Steer	6,704	1,021	386.00
Dressed Heifer	2,796	901	385.94

[AMS 2453](#) Monday

DAILY ESTIMATED BOXED BEEF CUTOUT VALUES

Choice	Select	Choice Cuts	70 loads
600-900#	600-900#	Select Cuts	6 loads
		Trimming	5 loads
		Grinds	13 loads
389.56	388.60		
2.56	2.53		

[AMS 3208](#) Monday

ESTD DAILY CATTLE SLAUGHTER

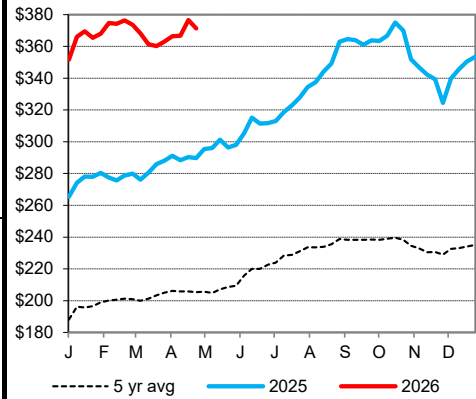
Monday	106,000
Week Ago (est)	97,000
Year Ago (act)	104,000
Wk to date (est)	106,000
Last Week (est)	97,000
Last Year (est)	104,000
Previous Day Estimated:	Steer and Heifer 74,000
	Cow and Bull 19,000

[AMS 1788](#) Monday

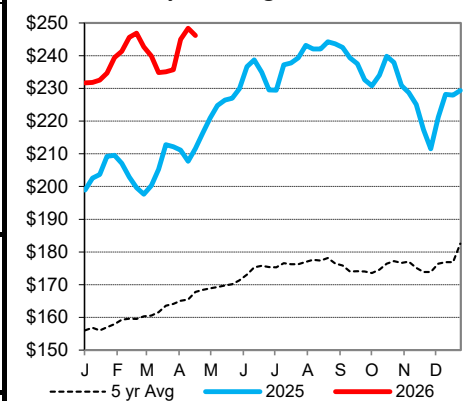
Springfield Livestock Mktg. Springfield, MO

	Pct Lean	Avg Dressing	Price
Breaking	75-80		167.00-180.00
Boning	80-85		167.00-180.00
Lean	85-90		151.00-168.00
Friday		Saturday	
			0

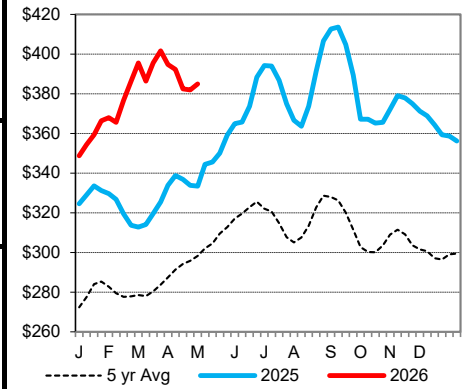
CME Feeder Cattle Index



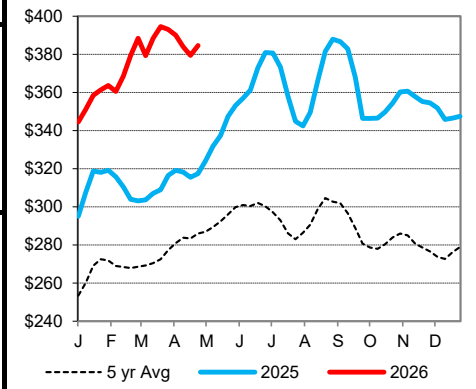
5 Area Wkly Wtd Avg Sltr Steer Price



Weekly Choice Cutout



Weekly Select Cutout



St. Joseph, Missouri

Phone: 816-676-7000

Email: stjoe.lpgmn@usda.gov

<http://www.ams.usda.gov/LSMarketNews>