



Weekly Cotton Market Review

Agricultural Marketing Service

Cotton and Tobacco Program ♦ Cotton Market News Division ♦ 3275 Appling Road ♦ Memphis, TN 38133 ♦ 901.384.3016

Mp_cn812

Vol. 107 No.38
April 24, 2026

Inside this Issue

Market Overview

Spot Quotations

ICE Futures

Southeastern

Textile Mill Report

South Central

Southwestern

Western

Pima Quotations

Featured

Staple Distribution

[Cotton Market Reports](#)

[Subscribe to this report](#)

[Subscribe to all Cotton Market reports](#)

Spot quotations averaged 379 points higher than the previous week, according to the USDA, Agricultural Marketing Services Cotton and Tobacco Program. Quotations for the base quality of cotton (color 41, leaf 4, staple 34, mike 35-36 and 43-49, strength 27.0-28.9, and uniformity 81.0-81.9) in the seven designated markets, averaged 75.05 cents per pound for the week ending Thursday, April 23, 2026. The weekly average was up from 71.26 cents last week and from 65.10 cents reported in the corresponding period a year ago. Daily average quotations ranged from a season high of 76.15 cents on Tuesday, April 21 to a low of 73.93 cents on Wednesday, April 22. Spot transactions reported in the Daily Spot Cotton Quotations for the week ended April 23 totaled 7,420 bales. This is compared to 36,055 reported last week and 38,748 bales reported the corresponding week a year ago. Total spot transactions for the season were 1,442,781 bales compared to 921,625 the corresponding week a year ago. The ICE July settlement price ended the week at 79.45 cents, compared to 79.82 cents last week.

41-4-34 Prices								
Date	SE	ND	SD	ETX-STX	WTX-KS-OK	DSW	SJV	7-MKT AVG
Apr 17	77.82	76.82	76.82	73.07	73.82	73.57	73.82	75.11
Apr 20	78.04	77.04	77.04	73.29	74.04	73.79	74.04	75.33
Apr 21	78.86	77.86	77.86	74.11	74.86	74.61	74.86	76.15
Apr 22	76.64	75.64	75.64	71.89	72.64	72.39	72.64	73.93
Apr 23	77.45	76.45	76.45	72.70	73.45	73.20	73.45	74.74
31-3-36 Prices								
Date	SE	ND	SD	ETX-STX	WTX-KS-OK	DSW	SJV	7-MKT AVG
Apr 17	83.57	81.57	81.07	79.82	77.82	79.57	86.22	81.38
Apr 20	83.79	81.79	81.29	80.04	78.04	79.79	86.44	81.60
Apr 21	84.61	82.61	82.11	80.86	78.86	80.61	87.26	82.42
Apr 22	82.39	80.39	79.89	78.64	76.64	78.39	85.04	80.20
Apr 23	83.20	81.20	80.70	79.45	77.45	79.20	85.85	81.01
Futures Settlement							Far Eastern A Index 1/	
Date	May-26	Jul-26	Oct-26	Dec-26	Mar-27	May-27	Current	
Apr 17	77.40	79.82	81.12	80.50	81.19	81.32	87.35	
Apr 20	77.60	80.04	81.32	80.76	81.54	81.68	89.10	
Apr 21	78.26	80.86	82.45	81.79	82.63	82.79	89.45	
Apr 22	76.33	78.64	80.20	80.16	81.03	81.24	90.55	
Apr 23	76.80	79.45	80.84	80.68	81.56	81.71	88.40	
Spot Transactions								
Date	SE	ND	SD	ETX-STX	WTX-KS-OK	DSW	SJV	PIMA
Apr 17	1,601	0	0	0	2,413	0	0	0
Apr 20	0	0	0	0	1,891	0	0	0
Apr 21	0	0	0	0	64	0	0	0
Apr 22	295	0	0	42	568	0	0	0
Apr 23	0	0	0	0	546	0	0	0
Weekly Totals	1,896	0	0	42	5,482	0	0	0

Source: USDA, AMS, Cotton and Tobacco Program, 1/ Cotlook

Southeastern Markets Regional Summary

Danny Pino ♦ Macon, GA ♦ 478.752.3560 ♦ Danny.Pino@usda.gov

Spot cotton trading was moderate. Supplies were moderate. Demand was good. Producer offerings were moderate. Average local spot prices were higher. Trading of CCC-loan equities was slow. No forward contracting activity was reported.

Mostly sunny and dry conditions prevailed across the lower Southeast during the period. Daytime high temperatures were in the 80s. Nighttime lows were in the 40s and 50s. Very light rainfall was received across portions of north Alabama and the Florida Panhandle. A massive wildfire has spread to nearly 30,000 acres near the Georgia-Florida line and remains just 10 percent contained, according to the Georgia Forestry Commission. Shifting winds have exacerbated the situation and caused the fire to move and spread. Droughty conditions expanded and intensified across the region, according to the U.S. Drought Monitor. Producers monitored the situation and hoped for a period of soaking rainfall.

Sunny and windy conditions were observed across the upper Southeast during the period. Daytime high temperatures in the 90s cooled into the 70s early in the week as a cold front moved across the region. Nighttime lows in the 60s dipped into the 40s.

Mostly dry conditions dominated the weather pattern with isolated pockets of light shower activity recorded across eastern North Carolina and Virginia. Very light precipitation was received in areas of coastal North Carolina and Virginia. Across the Carolinas, severe and extreme drought conditions expanded, according to the U.S. Drought Monitor. A period of soaking rainfall is needed to fortify sub-soil moisture.

[Textile Mill](#)

Domestic mill buyers inquired for a moderate volume of color 41, leaf 4, and staple 35 and longer for second quarter through fourth quarter 2026 delivery. No sales and no additional inquiries were reported. Yarn demand remained moderate to good. Mill buyers maintained a cautious undertone.

Demand through export channels was moderate. Agents for mills in Taiwan inquired for a moderate volume of color 43 and 52, leaf 5 and better, and staple 32 and longer for prompt to nearby shipment. No sales were reported.

[Trading](#)

- A moderate volume of color 31 and 41, leaf 3 and 4, staple mostly 36 and 37, mike 37-49, strength 30-37, and uniformity 80-83 sold for around 79.75 cents per pound, FOB car/truck, Georgia terms (Rule 5, compression charges paid, 30 days free storage).
- Mixed lots containing mostly color 41, leaf 3 and 4, staple 36 and longer, mike 37-52, strength 28-31, and uniformity 79-83 sold for around 79.50 cents, same terms as above.
- A heavy volume of 2023-crop cotton, color mostly 31 and 41, leaf 5 and better, staple 35 and longer, mike 37-49, strength 28-33, and uniformity 79-83 sold for around 72.00 cents, same terms as above.
- A light volume of CCC-loan equities traded for around 20.00 cents.

South Central Markets Regional Summary

Aerielle McDaniel ♦ Memphis, TN ♦ 901.384.3016 ♦ Aerielle.McDaniel@usda.gov

North Delta

Spot cotton trading was inactive. Supplies of available cotton were light. Producer offerings were light. Demand was very light. Average local spot prices were higher. Trading of CCC-loan equities was inactive. Though business remained quiet, industry participants monitored every high and low in the futures market's activity.

Daytime high temperatures were in the 80s. Nighttime lows were in the 70s. Steady rain showers caused a dip in temperatures over the weekend with highs in the 60s and 70s and lows in the 30s and 40s. Later, abundant sunshine allowed daytime temperatures to warm back into the 80s, while overnight lows rose into the 50s and 60s. Occasional cloudiness prevailed the remainder of the week. The North Delta territory received from trace amounts of moisture to around two and three-quarter inches of rain. More rain is needed to replenish dried aquifers and support topsoil moisture. No fieldwork was reported. According to the U.S. Drought Monitor report, released April 23, soil conditions remain depleted in Arkansas and Tennessee, with both states showing mostly severe to extreme drought. Producers continue to express concern regarding drought conditions, with the primary issue being how to determine the most optimal planting window in order to avoid replanting. As reported in the National Agricultural Statistics Service's Crop Progress report, released on April 20, cotton planted in Arkansas was at 5 percent, 1 in Missouri, and 16 percent in Tennessee. Seedlings were emerging in fields in Arkansas. According to industry experts, the elevated price of inputs and the shift in market prices have contributed to a decline in competitive commodity acreage, while cotton acreage has gained momentum.

South Delta

Spot cotton trading was inactive. Supplies of available cotton were light. Producer offerings were light. Demand was very light. Average local spot prices were higher. Trading of CCC-loan equities was inactive. No interest in forward contracting was reported. Though business remained quiet, industry participants monitored every high and low in the futures market's activity.

Daytime high temperatures began in the low 90s. Nighttime lows were in the 60s. Constant rainfall over the weekend brought cool weather to the South Delta territory, dropping daytime highs into the 70s. Overnight lows dropped into the 40s. Later in the week, plentiful sunshine helped daytime temperatures climb back into the 80s and nighttime lows back into the 60s. Precipitation totals measured from trace amounts to less than three-quarters of an inch of moisture. Growers patiently waited for heavy thunderstorms in the forecast, hoping rainfall would soak deep into soil that has been increasingly stressed by ongoing drought issues. The U.S. Drought Monitor report, released April 23, indicated that soil moisture across Louisiana and Mississippi remains heavily depleted, reflecting widespread severe to extreme drought conditions. No fieldwork was reported. According to the National Agricultural Statistics Service's Crop Progress report, released on April 20, cotton planting in Louisiana was at 2 percent, while Mississippi had reached 9 percent. The surge in fertilizer prices and other inputs has influenced producers' crop decisions.

Trading

North Delta

- No trading activity was reported.

South Delta

- No trading activity was reported.

Southwestern Markets Regional Summary

Bethany Lindgren ♦ Memphis, TN ♦ 901.384.3016 ♦ Bethany.Lindgren@usda.gov

Jane Byers-Angle ♦ Lubbock, TX ♦ 806.283.9389 ♦ Jane.Byers-Angle@usda.gov

East Texas-South Texas

Spot cotton trading was slow. Supplies and producer offerings were light. Demand was light. Average local spot prices were higher. Producer interest in forward contracting was reported. Trading of CCC-loan equities was inactive. Foreign mill inquiries were light. Interest was best from Korea, Mexico, and Pakistan.

Overcast conditions and periods of rainy weather dominated the weather pattern across East Texas for much of the week. Cooler daytime high temperatures in the 60s climbed back into the 80s by week's end. Nighttime lows were in the 50s to the 70s. Accumulated rainfall totals ranged from one-half of an inch to two and three-quarters of an inch. Very soggy and waterlogged field conditions made it difficult for planters to move through turnrows, slowing planting progression in central Texas. Some replanting is expected, according to local experts, due to the extremely wet field conditions that may prevent some seedlings from coming up. Heavy thunderstorm activity was reported early in the period and well into the middle of the week across much of the Coastal Bend and Upper Coast. Daytime high temperatures ranged from the 70s to 80s, with nighttime temperatures swinging from the 50s to the 70s. Accumulated moisture totals ranged from one-quarter of an inch up to two inches of rain during the period. After rainfall, producers applied herbicides to combat weeds and pesticides for thrips, fleahoppers, and aphids. While all moisture is welcomed by producers, the impact of the heavy rainfall varies from region to region. Storm activity has been spotty in some areas of the Coastal Bend, with lighter showers helping spur plant growth but being dried quickly by wind. Heavier accumulations in other areas resulted in soggy conditions and lower soil temperatures that have slowed stand development. Some producers are expected to replant or plant other commodities as cover crops if it is more feasible. However, consistent and timely rainfall will still be crucial to carry the crop to harvest. Industry participants attended the South Texas Cotton & Grain Association's Spring meeting during the week.

West Texas-Kansas-Oklahoma

Spot cotton trading was moderate. Supplies were light. Producer offerings were light. Demand was light. Average local spot prices were higher. Producer interest in forward contracting was light. Trading of CCC-loan equities was inactive. Foreign mill inquiries were light. Interest was best from Korea, Mexico, and Pakistan.

Daytime temperatures in Texas ranged from the 60s into the low 90s, while overnight lows varied from the 30s into the 60s. Most areas of the Northern and Southern High Plains remained dry and windy, with little to no moisture slowing ongoing evaporation. A few locations in the Rolling Plains received beneficial rainfall that helped ease parched soil, though precipitation was limited, and additional moisture was needed ahead of planting. Seed was booked. Ginning operations continued to make steady progress as they neared completion.

A cold front early in the week in Kansas dropped temperatures into the 60s, but daytime highs rebounded into the 80s. Nightly lows were unstable in the 30s and up into the low 60s. Outside conditions were breezy, with wind gusts ranging from 20 to 40 mph. Areas received less than three-quarters of an inch of rain. Thunderstorms were in the nearby forecast. With moisture levels depleted, producers were eager for heavy rain that could fully soak the fields and revive soil conditions. Fieldwork was limited. Field conditions were excessively firm, preventing any seed planting. Sowing is expected to begin within a one to three week span.

Daytime temperatures across Oklahoma ranged from the upper 60s into the low 90s, while overnight lows dipped into the 30s and later rebounded into the 60s. Wind gusts ranged from 20 to 30 mph, which caused fluctuations throughout the weather pattern. Variable cloud cover and isolated thunderstorms brought scattered precipitation. Ginning operations were ongoing, and producers prepared equipment in anticipation of planting, expected to begin within the next two to three weeks.

Southwestern Markets Regional Summary

Bethany Lindgren ♦ Memphis, TN ♦ 901.384.3016 ♦ Bethany.Lindgren@usda.gov

Jane Byers-Angle ♦ Lubbock, TX ♦ 806.698.4648 ♦ Jane.Byers-Angle@usda.gov

Trading

East Texas/South Texas

- A lot containing a light volume of color 44 and better, leaf 3 and 4, staple 36-39, mike averaging 45.2, strength averaging 30.2, and uniformity averaging 82.5 traded for around 63.00 cents per pound, FOB warehouse (compression charges not paid.)

West Texas, Kansas, & Oklahoma

- In Texas, mixed lots containing a moderate volume of color 33 and better, leaf 1-3, staple 34-39, mike 35-47, strength 26-33, uniformity 78-83, and 25 percent extraneous sold for 67.00 to 70.75 cents per pound, FOB car/truck, (compression charged not paid).
- In Kansas, a lot containing a light volume of mostly color 42 and better, leaf 3-5, staple 37 and 38, mike 36-40, strength 30-33, uniformity 79-81, and 50 percent extraneous traded for around 68.00 cents, same terms as above.
- In Oklahoma, a heavy volume of mixed lots containing mostly color 31 and better, leaf 1-4, staple 38-40, mike 33-46, strength 28-35, and uniformity 80-85 sold for 76.25 to 78.25 cents, same terms as above.

Western Markets Regional Summary

Bethany Lindgren ♦ Memphis, TN ♦ 901.384.3016 ♦ Bethany.Lindgren@usda.gov

[Desert Southwest \(DSW\)](#)

Spot cotton trading was inactive. Supplies and producer offerings were light. Demand was light. Producer interest in forward contracting was light. Average local prices were higher. No forward contracting or domestic mill activity was reported. Foreign mill inquiries were light.

Partly sunny skies dominated the weather pattern throughout Arizona during the period. Daily temperatures warmed into the upper 90s, and with no rain in the nearby forecast, dry conditions will persist. Nighttime lows were in the 50s and 60s. Planting progressed well under the dry conditions, and stands in emerged fields were making good progress. According to the National Agricultural Statistics Service's Crop Progress report, released on April 20, cotton planted in Arizona was at 47 percent completed as of April 20, up 15 percent from last week's report.

[San Joaquin Valley \(SJV\)](#)

Spot cotton trading was inactive. Supplies and demand were light. No forward contracting or domestic mill activity was reported. Average local prices were higher. Foreign mill inquiries were light.

Sunny skies across the San Joaquin Valley (SJV) early in the period gradually shifted to overcast conditions as a mid-week storm system moved into the region. The front delivered one-quarter of an inch to one inch of rainfall across cotton-growing areas, providing a beneficial boost to local reservoirs. Daytime highs were in the 70s and 80s, while nighttime lows dipped into the 40s and 50s. Producers worked quickly to plant as much seed as possible before wet weather entered the area. In the Sierra Nevada Mountains, a winter storm added light to

moderate snowfall, with heavier accumulations recorded at higher elevations. According to the National Agricultural Statistics Service's Crop Progress report released on April 20, California cotton planting reached 50 percent completion, a significant increase from the 25 percent reported the previous week.

[American Pima \(AP\)](#)

Spot cotton trading was active. Supplies were moderate. Demand was light. No forward contracting or domestic mill activity was reported. Average local spot prices were steady. Foreign mill inquiries were light.

In Arizona, daily temperatures warmed into the upper 90s with overnight lows in the 50s to the 60s. Planting expanded, and stands made good progress under warm and dry conditions. In the San Joaquin Valley, a storm front brought beneficial moisture to the area with up to one inch of rain accumulation being recorded in some locales. Planters were busy before the storm as producers worked to get as much seed in the ground as possible before the wet weather. In areas of West Texas, producers pre-irrigated fields, eliminated cover crops, and sprayed pre-plant herbicides.

[Trading](#)

Desert Southwest

- No trading activity was reported.

San Joaquin Valley

- No trading activity was reported.

American Pima

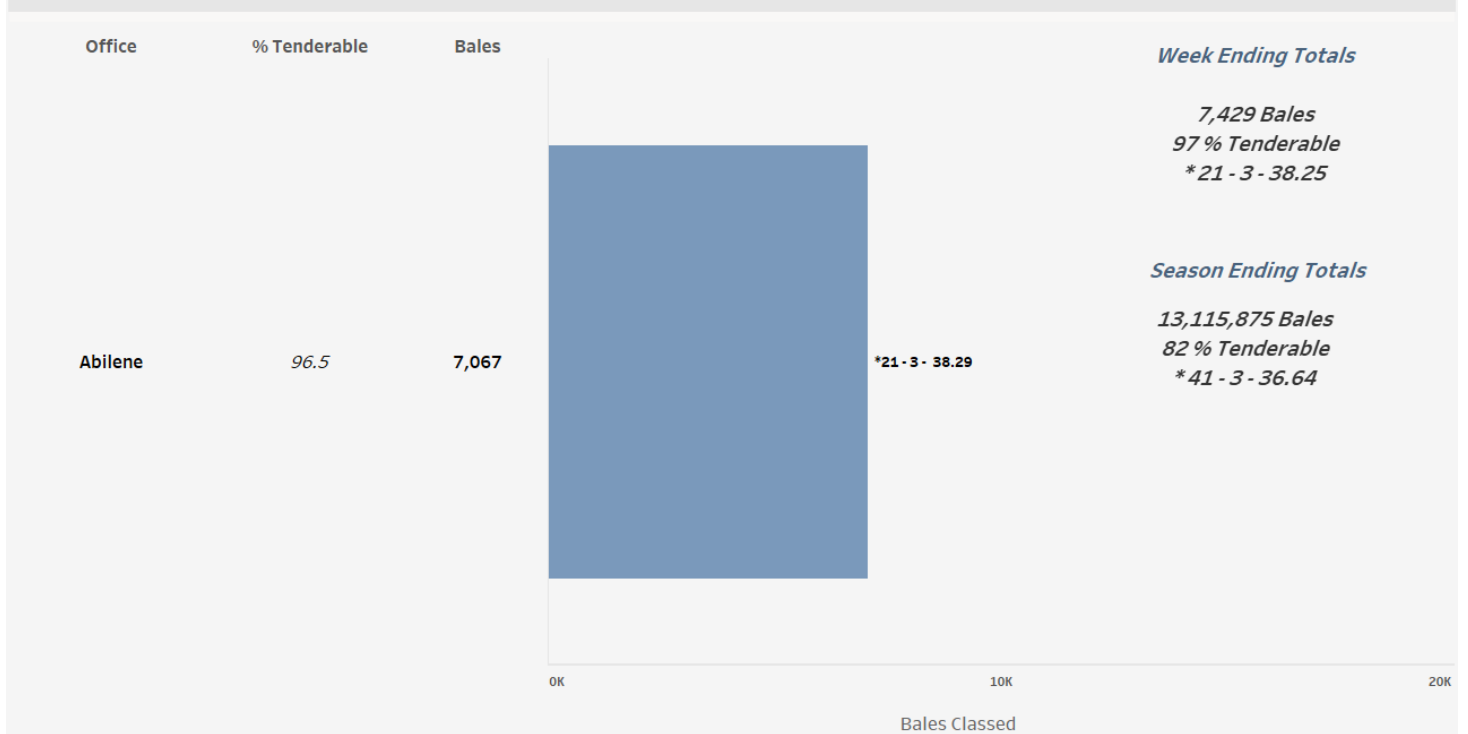
- No trading activity was reported.

Cotton Bales Classed by Office

For the week ending April 23, 7,429 upland cotton bales were classed. Offices not classing upland cotton included Dumas, Florence, Lamesa, Memphis, Macon, and Visalia. Classing data was withheld from Corpus Christi, Lubbock, and Rayville to avoid disclosure of information from one gin or less than 500 bales classed. Quality data across all offices for the week was 46.7 percent for color 21, 52.4 percent for leaf 3, staple averaging 38.25, mike averaging 4.03, strength averaging 30.50, and uniformity averaging 81.22. For the entire U.S. upland crop, total classed during the season was 13,115,875 bales. American Pima bales classed for the season was 390,584.

Bales of Upland Cotton Classed by Office, Week Ending April 23, 2026

* Predominate Color - Predominate Leaf - Avg. Staple



USDA, AMS, Cotton and Tobacco Program, Market News, *Data Source: USDA Cotton Quality Data*

[For complete report click here.](#)

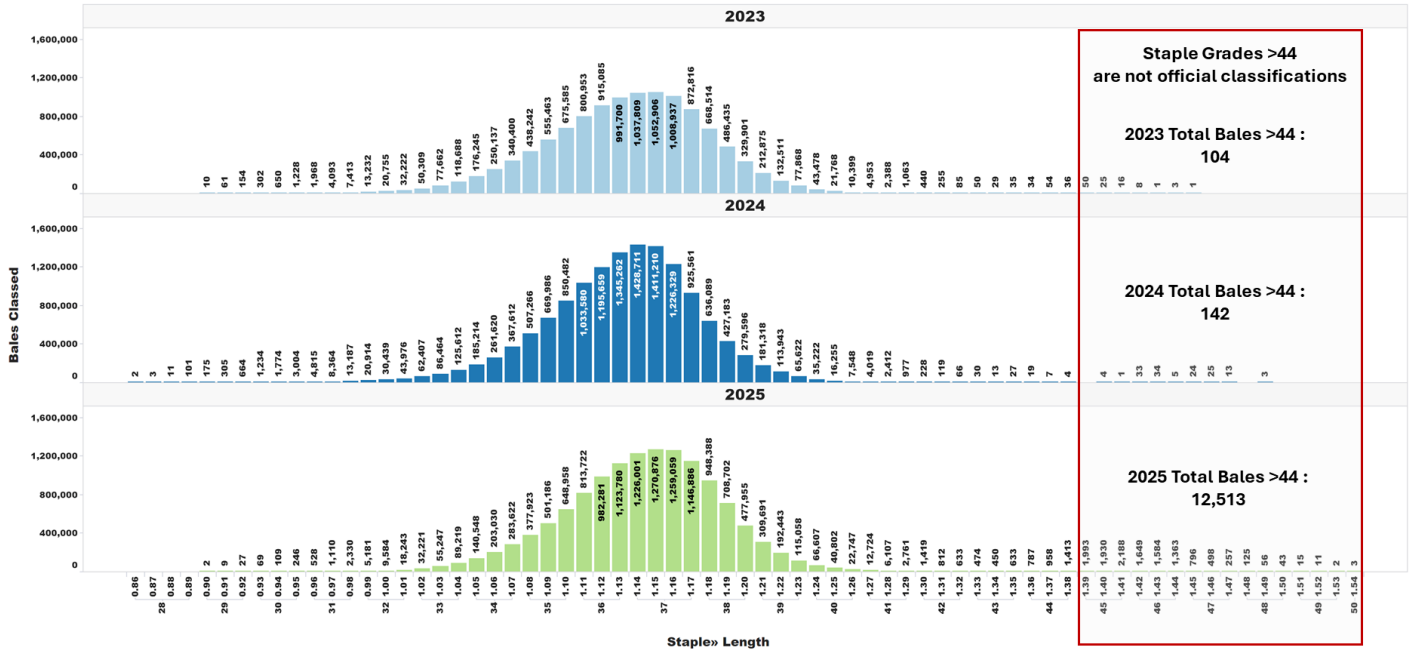
U.S. Upland Cotton Crop Staple Distribution

The official staple lengths for U.S. Upland Cotton, measured in 32nds of an inch, range from "24" to "44 & +". Currently, the longest staple included in the AMS Cotton Market News' weekly quality reports is the "40 & +" designation. Market News is in the process of updating its weekly reports to include all official staple length designations.

For more detailed information, AMS Cotton Market News posts daily per-bale quality data, which includes the instrument measurement for length in inches. You can find this data by office (<https://mymarketnews.ams.usda.gov/viewReport/3471>) and state (<https://mymarketnews.ams.usda.gov/viewReport/3472>). Using this data, Market News has calculated implied staple designations for lengths exceeding 1.35 inches. The accompanying chart shows the number of bales for each staple designation, with staples greater than "44" represented as implied staple lengths. Implied staple lengths are calculated and provided for informational purposes only and are not official designations.

Staple Distribution of U.S. Upland Cotton: 2023-2025 Crops (Classed through April 23, 2026)

Official Staple Grade (28-44), Unofficially Assigned Staple Grade (45-48)



Number of Bales in Certificated Stocks

Delivery Points	Stocks as of 4-23-2026	Awaiting Review	Non-Rain Grown Cotton
Dallas/FT. Worth, TX	137,149	0	0
Galveston, TX	10,683	0	0
Greenville, SC	0	0	0
Houston, TX	17,837	0	0
Memphis, TN	12	0	0
Total	165,681	0	0

World market prices for upland cotton, in cents per pound, in effect from 12:01 a.m., EDT, Friday through midnight, EDT, Thursday

Description	2025-2026					
	Mar	Mar 27	Apr	Apr	Apr	Apr
	20-26	Apr 02	03-09	10-16	17-23	24-30
Adjusted world price 1/	54.22	54.47	56.99	58.74	61.61	65.26
Course count adjustment	0.00	0.00	0.00	0.00	0.00	0.00
Loan Deficiency Payment (LDP)	0.00	0.00	0.00	0.00	0.00	0.00
Fine count adjustment 2024	0.00	0.00	0.00	0.00	0.00	0.00
Fine count adjustment 2025	0.00	0.00	0.00	0.00	0.00	0.00

1/ Color 41, leaf 4, staple 34, mike 35-36 & 43-49, strength readings of 26.0-28.9 grams per tex, length uniformity of 80.0-81.9 percent.
Source: Farm Service Agency, USDA.

Description	2024-2025		2025-2026	
	Through April 17, 2025		Through April 16, 2026	
	Week	Mkt. Year	Week	Mkt. Year
Outstanding sales	-	3,477,700	-	3,524,200
Exports	292,200	7,381,400	296,400	7,004,400
Total export commitments	-	10,859,100	-	10,528,600
New sales	108,900	-	127,300	-
Buy-backs and cancellations	4,900	-	7,400	-
Net sales	104,000	-	119,900	-
Sales next marketing year	38,000	1,171,900	57,100	1,232,400

Net sales of Upland totaling 119,900 RB for 2025/2026 were down 26 percent from the previous week and 55 percent from the prior 4-week average. Increases primarily for Vietnam (62,100 RB, including decreases of 3,900 RB), Turkey (22,400 RB, including decreases of 400 RB), Pakistan (15,900 RB, including decreases of 100 RB), India (10,900 RB), and Malaysia (7,100 RB switched from China), were offset by reductions for China (8,700 RB). Net sales of 57,100 RB for 2026/2027 reported for Vietnam (17,600 RB), Indonesia (17,600 RB), Pakistan (13,200 RB), and Malaysia (8,800 RB), were offset by reductions for South Korea (200 RB). Exports of 296,400 RB were down 3 percent from the previous week and 16 percent from the prior 4-week average. The destinations were primarily to Vietnam (89,000 RB), Pakistan (46,600 RB), India (25,100 RB), Bangladesh (22,000 RB), and Indonesia (21,300 RB). Net sales of Pima totaling 36,200 RB for 2025/2026--a marketing-year high--were up noticeably from the previous week and from the prior 4-week average. Increases primarily for India (22,900 RB), China (5,700 RB, including 1,800 RB switched from Vietnam), Vietnam (5,200 RB), Pakistan (1,400 RB), and Bangladesh (900 RB), were offset by reductions for Italy (300 RB). Net sales of 4,400 RB for 2026/2027 were primarily for Egypt (2,600 RB). Exports of 4,500 RB were down 26 percent from the previous week and 44 percent from the prior 4-week average. The destinations were to Pakistan (2,400 RB), India (1,200 RB), Thailand (500 RB), Peru (300 RB), and Vietnam (100 RB).

Source: Export Sales Reporting Division, Foreign Agricultural Service, USDA.

April 23, 2026

NOTE: Data may not add due to rounding.

American Pima Spot Quotations

American Pima quotations are for cotton equal to the Official Standards, net weight, in mixed lots, UD Free, FOB warehouse. 1/

AMERICAN PIMA SPOT QUOTATIONS					
Color	Leaf	Staple			
		44	46	48	50
1	1	140.75	146.50	148.25	148.25
	2	140.50	146.25	148.00	148.00
	3	133.75	141.50	142.50	142.50
	4				
	5				
	6				
2	1	140.50	146.25	148.00	148.00
	2	140.25	146.00	147.75	147.75
	3	133.50	141.25	142.25	142.25
	4	123.50	131.75	132.75	132.75
	5				
	6				
3	1	132.25	140.00	141.00	141.00
	2	129.75	137.50	138.50	138.50
	3	127.50	135.25	136.25	136.25
	4	118.50	126.25	127.25	127.25
	5	102.50	109.75	110.75	110.75
	6				
4	1	113.50	121.25	123.00	123.00
	2	113.25	121.00	122.25	122.25
	3	112.00	119.75	120.75	120.75
	4	107.00	114.75	115.75	115.75
	5	95.75	103.50	104.50	104.50
	6				
5	1				
	2	90.25	100.25	100.25	100.25
	3	90.25	99.75	100.00	100.00
	4	90.25	94.25	94.25	94.25
	5	90.00	94.00	94.00	94.00
	6				
6	1				
	2	82.50	85.50	85.50	85.50
	3	82.50	85.50	85.50	85.50
	4	82.50	85.50	85.50	85.50
	5	82.25	85.25	85.25	85.25
	6	81.75	84.75	84.75	84.75

The current Pima spot quotations represent prices from local sales, export sales, and offerings last reported on March 31, 2026.

Mike

Range	Diff.
26 & Below	-2000
27-29	-1500
30-32	-1000
33-34	-500
35 & Above	0

Strength

(Grams per Tex)	
Range	Diff.
34.9 & Below	-1650
35.0 – 35.9	-1400
36.0 – 36.9	-1150
37.0 – 37.9	-800
38.0 – 38.9	0
39.0 – 39.9	0
40.0 & Above	0

Extraneous Matter

Type - Level	Diff.
Prep - Level 1	-810
Prep - Level 2	-1095
Other - Level 1	-715
Other - Level 2	-1035
Plastic - Level 1	-4000
Plastic - Level 2	-4000

1/ Pima spot quotations for color-leaf-staple combinations not quoted will be included as sales of those qualities which are reported.

April 23 2026