

DAILY DIRECT HOGS PLANT DELIVERED as of 1:30 PM				
Negotiated Barrow and Gilt:		Carcass Base Price		Live Price
<u>NATIONAL - AMS 2675/LM_HG203:</u>				
Range:	\$88.00	\$94.00	\$64.25	\$73.35
Weighted Average:	\$92.27		\$70.32	
Change from Prior Day:	(-\$0.38)		(-\$1.59)	
Head Count:	2,860		1,323	
<u>IOWA/MINNESOTA - AMS 2675/LM_HG206:</u>				
Weighted Average:	\$92.67		*	
Change from Prior Day:	(-\$0.54)		*	
<u>WESTERN CORNBELT - AMS 2675/LM_HG212:</u>				
Weighted Average:	\$92.67		*	
Change from Prior Day:	(-\$0.36)		*	
<u>EASTERN CORNBELT - AMS 2675/LM_HG210:</u>				
Weighted Average:	*		\$72.16	
Change from Prior Day:	*		*	

*Price not reported due to confidentiality.

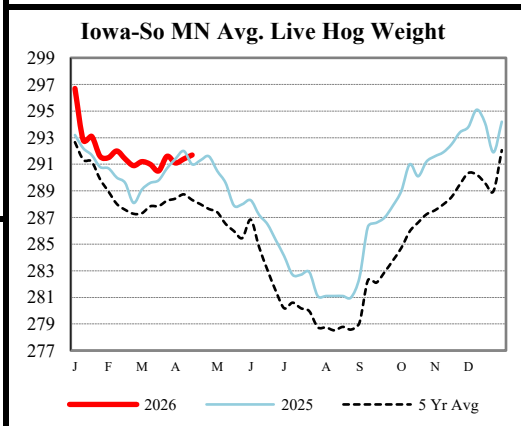
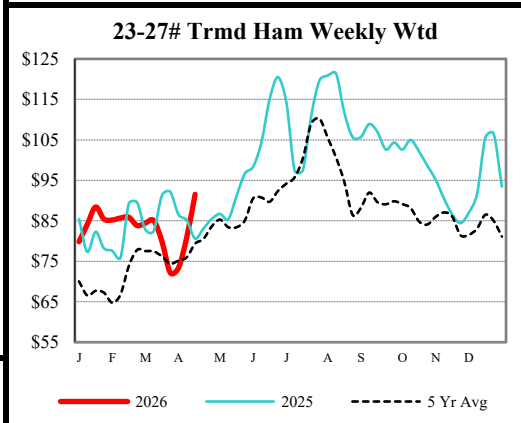
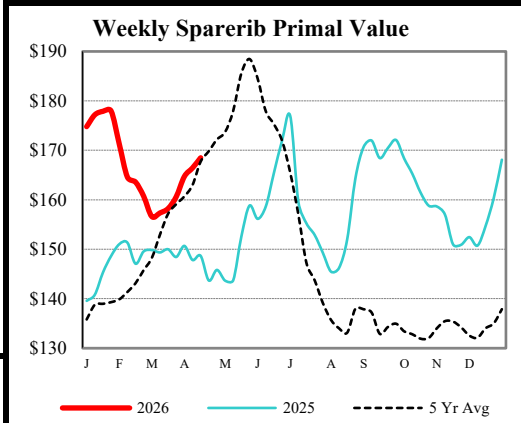
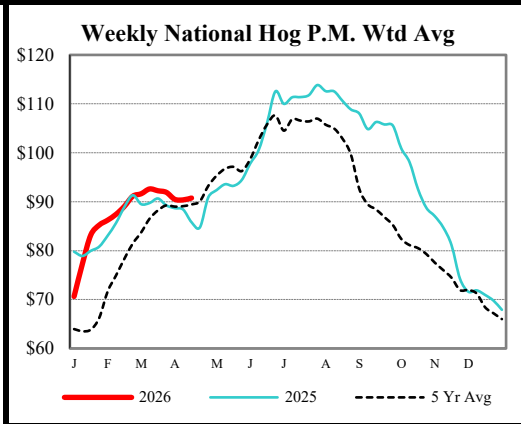
<u>NATIONAL DAILY PORK REPORT FOB PLANT - AMS 2498/LM_PK602:</u>				
Carcass Cutout Values	98.55	Change:	(-0.79)	
Primal Loin	88.75		(-1.44)	
Primal Butt	122.06		1.58	
Primal Picnic	69.73		(-3.58)	
Primal Rib	176.37		2.46	
Primal Ham	90.84		(-1.79)	
Primal Belly	133.65		(-1.41)	
Total Loads	300.32			
Pork Cuts	265.40	Lds		
Trim/Process Pork	34.93	Lds		

<u>DAILY HOG SLAUGHTER UNDER FIS - AMS 3208/SJ_LS710</u>	
Today (est)	495,000
Week Ago (est)	494,000
Year Ago (act)	474,770
Week to Date (est)	1,476,000
Same Period Last Week (est)	1,477,000
Same Period Last Year (act)	1,309,133

<u>National Daily Direct Hog Prior Day Report - Slaughtered Swine - AMS 2511/LM_HG201</u>					
Producer Sold:	NEG	OMF	SPMF	OPA	Total
Head Count	3,836	30,547	120,765	80,831	236,290
Carcass Base Price	91.44	92.01	90.03	89.31	90.03
Average Net Price	90.94	94.37	91.38	91.15	91.64

Negotiated Formula included in total *Price not reported due to confidentiality.

<u>IOWA-SOUTHERN MINNESOTA WEEKLY AVERAGE WEIGHT - AMS 2840/NW_LS720</u>				
For Week Ending Sat,				
Apr 18, 2026	Ending	Head Count	Average Weight	
	4/18/2026	807,000	291.7	
Week Ago:	4/11/2026	763,000	291.4	
Year Ago:	4/19/2025	749,000	291.3	



USDA Livestock, Poultry & Grain Market News
Des Moines, Iowa | PH 515-284-4460

Email: Desm.LPGMN@usda.gov

<https://mymarketnews.ams.usda.gov/viewReport/2872>

USDA AMS Livestock, Poultry & Grain Market News