



# Weekly Cotton Market Review

Agricultural Marketing Service

Cotton and Tobacco Program ♦ Cotton Market News Division ♦ 3275 Appling Road ♦ Memphis, TN 38133 ♦ 901.384.3016

Mp\_cn812

Vol. 107 No.36  
April 10, 2026

## Inside this Issue

[Market Overview](#)

[Spot Quotations](#)

[ICE Futures](#)

[Southeastern](#)

[Textile Mill Report](#)

[South Central](#)

[Southwestern](#)

[Western](#)

[Supply & Demand](#)

[Pima Quotations](#)

**\*Featured\***

**[Staple Distribution](#)**

[Cotton Market Reports](#)

[Subscribe to this report](#)

[Subscribe to all Cotton Market reports](#)

Spot quotations averaged 171 points higher than the previous week, according to the USDA, Agricultural Marketing Services Cotton and Tobacco Program. Quotations for the base quality of cotton (color 41, leaf 4, staple 34, mike 35-36 and 43-49, strength 27.0-28.9, and uniformity 81.0-81.9) in the seven designated markets, averaged 68.66 cents per pound for the week ending Thursday, April 9, 2026. The weekly average was up from 66.95 cents last week and from 62.03 cents reported in the corresponding period a year ago. Daily average quotations ranged from a low of 67.99 cents on Tuesday, April 7 to a season high of 69.94 cents on Thursday, April 9. Spot transactions reported in the Daily Spot Cotton Quotations for the week ended April 9 totaled 15,510 bales. This is compared to 40,550 reported last week and 1,317 bales reported the corresponding week a year ago. Total spot transactions for the season were 1,399,306 bales compared to 870,079 the corresponding week a year ago. The ICE May settlement price ended the week at 73.26 cents, compared to 70.92 cents last week.

41-4-34 Prices								
Date	SE	ND	SD	ETX-STX	WTX-KS-OK	DSW	SJV	7-MKT AVG
Apr 3	Holiday		Holiday		Holiday		Holiday	
Apr 6	70.92	69.67	69.67	66.42	67.67	66.92	67.17	68.35
Apr 7	70.56	69.31	69.31	66.06	67.31	66.56	66.81	67.99
Apr 8	70.92	69.67	69.67	66.42	67.67	66.92	67.17	68.35
Apr 9	72.51	71.26	71.26	68.01	69.26	68.51	68.76	69.94
31-3-36 Prices								
Date	SE	ND	SD	ETX-STX	WTX-KS-OK	DSW	SJV	7-MKT AVG
Apr 3	Holiday	Holiday	Holiday	Holiday	Holiday	Holiday	Holiday	Holiday
Apr 6	76.67	74.42	73.92	73.17	71.67	72.92	79.57	74.62
Apr 7	76.31	74.06	73.56	72.81	71.31	72.56	79.21	74.26
Apr 8	76.67	74.42	73.92	73.17	71.67	72.92	79.57	74.62
Apr 9	78.26	76.01	75.51	74.76	73.26	74.51	81.16	76.21
Futures Settlement							Far Eastern A Index 1/	
Date	May-26	Jul-26	Oct-26	Dec-26	Mar-27	May-27	Current	
Apr 3	0.00	0.00	0.00	0.00	0.00	0.00	-	
Apr 6	71.67	73.84	75.80	75.75	76.68	76.96	#VALUE!	
Apr 7	71.31	73.54	75.62	75.47	76.33	76.65	82.55	
Apr 8	71.67	73.58	75.42	75.47	76.30	76.57	82.25	
Apr 9	73.26	75.32	76.95	76.87	77.62	77.87	82.55	
Spot Transactions								
Date	SE	ND	SD	ETX-STX	WTX-KS-OK	DSW	SJV	PIMA
Apr 3	Holiday	Holiday	Holiday	Holiday	Holiday	Holiday	Holiday	0
Apr 6	0	0	0	0	849	0	0	0
Apr 7	0	0	0	1,430	4,043	0	0	0
Apr 8	1,502	0	0	0	4,433	0	0	0
Apr 9	1,937	0	0	0	1,316	0	0	0
<b>Weekly Totals</b>	<b>3,439</b>	<b>0</b>	<b>0</b>	<b>1,430</b>	<b>10,641</b>	<b>0</b>	<b>0</b>	<b>0</b>

Source: USDA, AMS, Cotton and Tobacco Program, 1/ Cotlook

## Southeastern Markets Regional Summary

Danny Pino ♦ Macon, GA ♦ 478.752.3560 ♦ [Danny.Pino@usda.gov](mailto:Danny.Pino@usda.gov)

Spot cotton trading was moderate. Supplies were moderate. Demand was good. Producer offerings were moderate. Average local spot prices were higher. Trading of CCC-loan equities was inactive. No forward contracting activity was reported.

Overcast conditions early in the period gave way to sunny skies as the week progressed across the lower Southeast. Daytime high temperatures were in the 70s to low 80s. Nighttime lows were mostly in the 50s. Weekly rainfall totals measured from trace amounts to around one-half of an inch of precipitation with light-to-moderate recordings observed in south Alabama, the Florida panhandle, and portions southwest Georgia. Despite the moisture, drought conditions expanded and intensified across Georgia and Florida, according to the U.S. Drought Monitor. Producers considered spring planting options.

Cloudy and overcast conditions over the weekend gave way to sunny and clear weather later in the week across the upper Southeast. Daytime high temperatures were in the 70s and 80s. Nighttime lows varied from the 40s to 50s. Scattered rainfall brought moisture to the cotton growing areas of the eastern Carolinas and Virginia early in the period. Precipitation totals measured from trace amounts to around one-inch of moisture, with locally heavier accumulations observed in pockets. Despite the moisture, drought conditions expanded in areas of the Carolinas and Virginia, according to the U.S. Drought Monitor. Producers considered spring planting options.

### Textile Mill

Domestic mill buyers inquired for a moderate volume of color 41, leaf 4, and staple 35 and longer for immediate through fourth quarter delivery. No sales and no additional inquiries were reported. Yarn demand remained moderate to good. Mill buyers maintained a cautious undertone.

Demand through export channels was moderate. Agents for mills in Costa Rica inquired for a moderate volume of color 31, leaf 3, and staple 36 and 37 for October shipment. Representatives for mills in Vietnam inquired for a moderate volume of color 31, leaf 3 and staple 37 for June shipment. No sales were reported.

### Trading

- A moderate volume of color mostly 31, leaf mostly 3, staple 34-37, mike 37-49, strength 28-31, and uniformity 80-83 sold for around 76.50 cents, FOB car/truck, Georgia terms (Rule 5, compression charges paid, 30 days free storage).
- A moderate volume of color mostly 21, leaf mostly 3, staple 33-42, mike 43-52, strength 28-31, and uniformity 80-83 sold for around 76.25 cents, same terms as above.
- A light volume of color mostly 31, leaf mostly 2, staple 37-42, mike 37-52, strength 29-32, and uniformity 79-81 sold for around 73.75 cents, same terms as above.
- A light volume of color mostly 51, leaf 3, staple 33-37, mike 37-49, strength 27-29, and uniformity 80-82 sold for around 64.75 cents, same terms as above.

## South Central Markets Regional Summary

Aerielle McDaniel ♦ Memphis, TN ♦ 901.384.3016 ♦ [Aerielle.McDaniel@usda.gov](mailto:Aerielle.McDaniel@usda.gov)

### North Delta

Spot cotton trading was inactive. Supplies of available cotton were light. Producer offerings were light. Demand was very light. Average local spot prices were higher. Trading of CCC-loan equities was inactive. A light interest in forward contracting was reported. Business remained slow as growers monitored the volatility of inputs to produce raw cotton.

Sunny and cloudy skies varied during the reporting period. Daytime highs were in the 60s over the weekend rising into the 70s and 80s throughout the week. Nighttime lows were in the 40s and gradually increased into the 50s and 60s. If temperatures hold steady across the Mid-South, cotton seed could be planted earlier than initially anticipated. Thunderstorms with steady rains were dominant over the weekend. Areas received precipitation ranging from trace amounts to approximately one and three-quarters inches. More rain is needed. No cotton production field activities were reported. The Bootheel has experienced extreme drought. According to the U.S. Drought Monitor report, moisture shortage remains a major factor in planting decisions with mostly extreme drought conditions in Arkansas, none to abnormal in Missouri, and mostly abnormal to moderate drought in Tennessee. The majority of 2025 Mid-South cotton has been sold, though some producers are holding onto their remaining supplies in hopes of securing higher market prices. Virtual and in-person industry meetings were planned and attended by all interested parties.

### South Delta

Spot cotton trading was inactive. Supplies of available cotton were light. Producer offerings were light. Demand was very light. Average local spot prices were higher. Trading of CCC-loan equities was inactive. No forward contracting was reported. Business activities remained light as producers observed all market factors as the planting season slowly approaches.

Sunny and partly cloudy skies prevailed during the period. After receiving light showers over the weekend pushing highs down into the 60s, daytime high temperatures climbed into the 70s and 80s. Although the area received precipitation ranging from trace amounts up to one and three-quarter inches, more soaking rainfall is still needed. This would help restore the underground aquifers and help with preparations before the upcoming season. No field activities were reported. According to the U.S. Drought Monitor report, prolonged dryness continued to spread through the region with mostly moderate to severe drought in Louisiana and mostly abnormal to moderate in Mississippi. Local experts are preparing to roll from May-26 to July-26 in the coming week. Most growers have high expectations. Virtual and in-person industry meetings were planned and attended by all interested parties.

### Trading

#### *North Delta*

- No trading activity was reported.

#### *South Delta*

- No trading activity was reported.

## Southwestern Markets Regional Summary

Bethany Lindgren ♦ Memphis, TN ♦ 901.384.3016 ♦ [Bethany.Lindgren@usda.gov](mailto:Bethany.Lindgren@usda.gov)  
Jane Byers-Angle ♦ Lubbock, TX ♦ 806.283.9389 ♦ [Jane.Byers-Angle@usda.gov](mailto:Jane.Byers-Angle@usda.gov)

### East Texas-South Texas

Spot cotton trading was moderate. Supplies and producer offerings were light. Demand was light. Average local spot prices were higher. Light forward contracting activity was reported. Trading of CCC-loan equities was inactive. Foreign mill inquiries were light to moderate. Interest was best from Pakistan, Turkey, and Vietnam.

Heavy thunderstorms were observed in the central Texas region throughout the Easter weekend before wet conditions gave way to sunshine and partly cloudy skies. Daytime high temperatures were in the 70s to 80s. Nighttime lows were in the 40s and 60s. Accumulated moisture from weekend rain events ranged from one inch to two and one-quarter inches, with multiple chances for additional precipitation and potentially severe storms in the forecast for the weekend and into the next week. In the Brazos River Bottoms, the commencement of planting was postponed due to cool soil temperatures and wet field conditions, but activity is expected to begin at full throttle once fields dry and soil reaches optimal temperatures for seedling development. Scattered showers brought much-needed moisture to droughted areas of South Texas this period. Daytime high temperatures were in the upper 70s to 80s, with nighttime temperatures in the 50s to 70s. Accumulated rainfall totals measured from three-quarters of an inch up to three and one-quarter inches across the region. Planting progress in the fields was slowed due to soggy field conditions that made it difficult for equipment to move through rows. Producers in the Coastal Bend prepared to finalize planting by the April 15 insurance deadline. According to local experts, timely rainfall has improved the industry outlook for the potential of this year's crop in the South Texas territory, but more precipitation will be crucial in order to carry the crop to harvest. Cotton in the lower Rio Grande Valley ranged from the four true leaf stage up to pinhead square stage, according to the Pest Cast Newsletter.

### West Texas-Kansas-Oklahoma

Spot cotton trading was slow. Supplies were light. Producer offerings were light. Demand was very light. Average local spot prices were higher. Producer interest in forward contracting was light. Trading of CCC-loan equities was inactive. Foreign mill inquiries were light to moderate. Interest was best from Pakistan, Turkey, and Vietnam.

Texas experienced a cold-front early in the period that caused variable temperatures and brought scattered rainfall and hail, with daytime highs ranging from the upper 60s to low 80s. Overnight lows were in the 40s to 60s. Precipitation totals measured one-half of an inch up to two inches and was not widespread. Gusty wind dried out already-parched fields at some locations. Additional rainfall was in the nearby weekend forecast. Cotton ginning continued at the few remaining facilities processing the end of the crop. The Texas Cotton Ginners Association hosted the annual gin show in Lubbock, Texas. In addition to the trade show, several organizations hosted meetings and events during the period.

Kansas moved from cold, windy weather to clearer, sunnier conditions, with daytime temperatures ranging from the mid-60s to low 80s and overnight lows fluctuating between the 30s and 50s. Fieldwork progress remained limited as persistent gusty winds made outdoor operations difficult. Planting seed was booked.

Rain was received on the southeastern side of Oklahoma that deposited trace amounts up to two and one-half inches of moisture. Precipitation was welcomed. Daytime highs ranged from the upper 60s to the mid-80s, while overnight lows held in the 40s to 60s. As weather and soil conditions allowed, modules were moved to gin yards, and ginning operations continued.

## Southwestern Markets Regional Summary

Bethany Lindgren ♦ Memphis, TN ♦ 901.384.3016 ♦ [Bethany.Lindgren@usda.gov](mailto:Bethany.Lindgren@usda.gov)

Jane Byers-Angle ♦ Lubbock, TX ♦ 806.698.4648 ♦ [Jane.Byers-Angle@usda.gov](mailto:Jane.Byers-Angle@usda.gov)

### Trading

#### *East Texas/South Texas*

- Mixed lots containing a moderate volume of color 31 and better, leaf 2-4, staple 37, mike 39-48, strength 29-31, and uniformity 81-83 sold for around 70.00 cents per pound, FOB warehouse (compression charges not paid).
- A moderate volume of 2024-crop cotton, color 41 and 42, leaf 3 and 4, staple 37, mike 47-50, strength 30-32, and uniformity 81-82 sold for 60.00 to 62.00 cents, same terms as above.

#### *West Texas, Kansas, & Oklahoma*

- In Texas, lots containing a light volume of color 31, 32, and 33, leaf 3, staple 33, mike averaging 44.2, strength 25-28, and uniformity 77-88 sold for 60.00 to 61.00 cents per pound, FOB car/truck, (compression charged not paid).
- In Kansas, a mixed lot containing a heavy volume of mostly color 32 and 33, leaf 2-4, staple 34-35, mike 33-44, strength 28-32, and uniformity 79-83 traded for around 61.00 cents, same terms as above.
- In Oklahoma, even-running lots containing a heavy volume of color 31 and better, leaf 3 and better, staple 38-41, mike 34-47, strength 29-37, and uniformity 78-85 sold for 72.50 to 72.75 cents, same terms as above.
- A light volume of CCC-loan equities traded for 7.25 to 7.75 cents.

## Western Markets Regional Summary

Bethany Lindgren ♦ Memphis, TN ♦ 901.384.3016 ♦ [Bethany.Lindgren@usda.gov](mailto:Bethany.Lindgren@usda.gov)

### [Desert Southwest \(DSW\)](#)

Spot cotton trading was inactive. Supplies and producer offerings were light. Demand was light. Producer interest in forward contracting was light. Average local prices were higher. No forward contracting or domestic mill activity was reported. Foreign mill inquiries were light.

A mix of sunshine and clouds prevailed in the DSW. Daytime highs were in the 70s and 90s. Nightly lows were in the 40s to 60s. Light showers brought trace amounts of moisture to areas of New Mexico. Planting continued in parts of Arizona, and warm temperatures pushed seedling and stand development. In Yuma County, stands in the earliest-planted fields have reached the pin-head square stage. In El Paso, TX, producers continued preparations for planting, pre-irrigating fields and readying equipment. According to local sources, planting could begin early next week.

### [San Joaquin Valley \(SJV\)](#)

Spot cotton trading was inactive. Supplies and demand were light. No forward contracting or domestic mill activity was reported. Average local prices were higher. Foreign mill inquiries were light.

Daytime temperatures ranged from the 70s to the 80s. Nighttime lows were in the 50s. No rainfall was recorded, but chances for showers were in the forecast for early next week. Planting continued under favorable conditions. Beds were reworked in some fields due to last week's rainfall. Due to the record-breaking temperatures that areas of the SJV have experienced this year, the California Department of Water Resources reported that the statewide snowpack is at just 18 percent of average.

### [American Pima \(AP\)](#)

Spot cotton trading was active. Supplies were moderate. Demand was light. No forward contracting or domestic mill activity was reported. Average local spot prices were steady. Foreign mill inquiries were light.

Warm temperatures continued in the region. Daytime highs remained in the 70s to the 90s. Overnight lows were in the 40s to the 60s. Small rain events resulted in moisture totals ranging from trace amounts up to one-tenth of an inch. Favorable planting conditions allowed producers to continue planting in Arizona, and pinhead squares were reported in the earliest-planted fields. In areas that received showers last week in the SJV, some producers are reworking beds. In El Paso, TX, pre-irrigation and other preparatory activities continued. Planting could begin as early as next week, according to local sources.

### [Trading](#)

#### *Desert Southwest*

- No trading activity was reported.

#### *San Joaquin Valley*

- No trading activity was reported.

#### *American Pima*

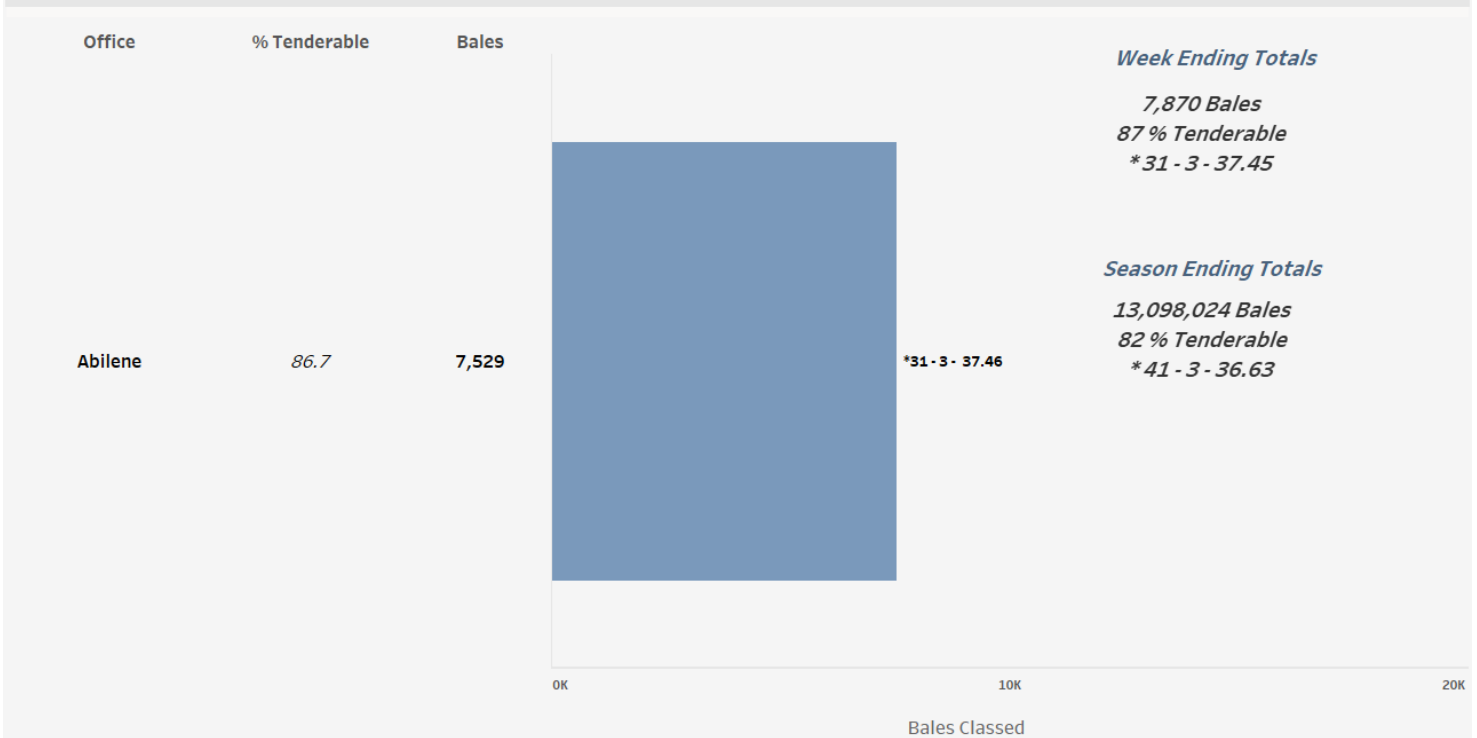
- No trading activity was reported.

## Cotton Bales Classed by Office

For the week ending April 9, 7,870 of upland cotton bales were classed. Offices not classing upland cotton included Dumas, Florence, Lubbock, Memphis, and Rayville. Classing data was withheld from Corpus Christi, Lamesa, Macon, and Visalia to avoid disclosure of information from one gin or less than 500 bales classed. Quality data across all offices for the week was 51.4 percent for color 31, 47.1 percent for leaf 3, staple averaging 37.45, mike averaging 4.15, strength averaging 29.88, and uniformity averaging 81.51. For the entire U.S. upland crop, total classed during the season was 13,098,024 bales. American Pima bales classed for the season was 390,584.

### Bales of Upland Cotton Classed by Office, Week Ending April 9, 2026

\* Predominate Color - Predominate Leaf - Avg. Staple



USDA, AMS, Cotton and Tobacco Program, Market News, *Data Source: USDA Cotton Quality Data*

[For complete report click here.](#)

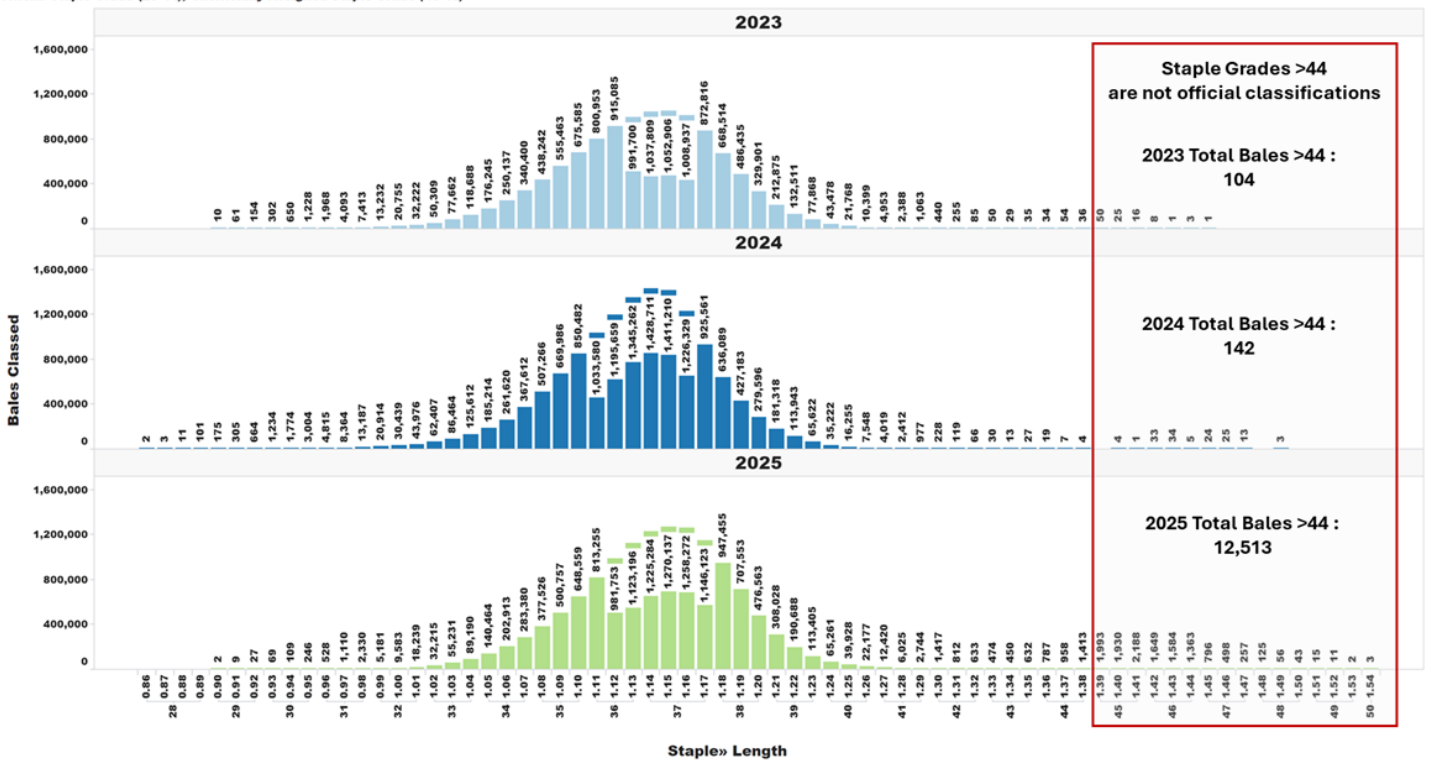
# U.S. Upland Cotton Crop Staple Distribution

The official staple lengths for U.S. Upland Cotton, measured in 32nds of an inch, range from "24" to "44 & +". Currently, the longest staple included in the AMS Cotton Market News' weekly quality reports is the "40 & +" designation. Market News is in the process of updating its weekly reports to include all official staple length designations.

For more detailed information, AMS Cotton Market News posts daily per-bale quality data, which includes the instrument measurement for length in inches. You can find this data by office ( <https://mymarketnews.ams.usda.gov/viewReport/3471> ) and state ( <https://mymarketnews.ams.usda.gov/viewReport/3472> ). Using this data, Market News has calculated implied staple designations for lengths exceeding 1.35 inches. The accompanying chart shows the number of bales for each staple designation, with staples greater than "44" represented as implied staple lengths. Implied staple lengths are calculated and provided for informational purposes only and are not official designations.

**Staple Distribution of U.S. Upland Cotton: 2023-2025 Crops (Classed through April 9, 2026)**

Official Staple Grade (28-44), Unofficially Assigned Staple Grade (45-48)



## Supply and Demand

*The following information was excerpted from the World Agricultural Supply and Demand Estimates, released on April 9, 2026.*

There are no changes to supply and demand categories in the 2025/26 U.S. cotton balance sheet this month. The season-average farm price forecast is raised 1 cent to 61 cents/lb.

**April 2026**

### WASDE - 670 - 17

#### U.S. Cotton Supply and Use 1/

	2023/24	2024/25 Est.	2025/26 Proj. Mar	2025/26 Proj. Apr
<b>Area</b>	<i>Million Acres</i>			
Planted	10.23	11.18	9.28	9.28
Harvested	6.44	7.81	7.80	7.80
	<i>Pounds</i>			
Yield per Harvested Acre	899	886	856	856
	<i>Million 480 Pound Bales</i>			
Beginning Stocks	4.65	3.15	4.00	4.00
Production	12.07	14.41	13.92	13.92
Imports	0.00	0.00	0.01	0.01
Supply, Total	16.72	17.57	17.92	17.92
Domestic Use	1.85	1.70	1.60	1.60
Exports, Total	11.75	11.90	12.00	12.00
Use, Total	13.60	13.60	13.60	13.60
Unaccounted 2/	-0.03	-0.03	-0.08	-0.08
Ending Stocks	3.15	4.00	4.40	4.40
Avg. Farm Price 3/	76.1	63.2	60.0	61.0

Note: Reliability calculations at end of report. 1/ Upland and extra-long staple; marketing year beginning August 1. Totals may not add due to rounding. 2/ Reflects the difference between the previous season's supply less total use and ending stocks. 3/ Cents per pound for upland cotton.

[For complete report click here.](#)

## Number of Bales in Certificated Stocks

Delivery Points	Stocks as of 4-9-2026	Awaiting Review	Non-Rain Grown Cotton
Dallas/FT. Worth, TX	101,307	0	0
Galveston, TX	10,658	0	0
Greenville, SC	0	0	0
Houston, TX	16,236	0	0
Memphis, TN	12	0	0
<b>Total</b>	<b>128,213</b>	<b>0</b>	<b>0</b>

World market prices for upland cotton, in cents per pound, in effect from 12:01 a.m., EDT, Friday through midnight, EDT, Thursday

Description	2025-2026					
	Mar	Mar	Mar	Mar 27	Apr	Apr
	06-12	13-19	20-26	Apr 02	03-09	10-16
Adjusted world price 1/	51.44	51.50	54.22	54.47	56.99	58.74
Course count adjustment	0.00	0.00	0.00	0.00	0.00	0.00
Loan Deficiency Payment (LDP)	0.56	0.50	0.00	0.00	0.00	0.00
Fine count adjustment 2024	0.00	0.00	0.00	0.00	0.00	0.00
Fine count adjustment 2025	0.00	0.00	0.00	0.00	0.00	0.00

1/ Color 41, leaf 4, staple 34, mike 35-36 & 43-49, strength readings of 26.0-28.9 grams per tex, length uniformity of 80.0-81.9 percent.  
Source: Farm Service Agency, USDA.

Description	2024-2025		2025-2026	
	Through April 3, 2025		Through April 2, 2026	
	Week	Mkt. Year	Week	Mkt. Year
Outstanding sales	-	3,792,100	-	3,844,600
Exports	377,200	6,761,100	342,700	6,403,000
Total export commitments	-	10,553,200	-	10,247,600
New sales	122,100	-	333,300	-
Buy-backs and cancellations	7,100	-	8,500	-
Net sales	115,100	-	319,600	-
Sales next marketing year	18,900	1,068,000	14,100	1,148,400

Net sales of Upland totaling 319,600 RB for 2025/2026 were down 14 percent from the previous week, but up 25 percent from the prior 4-week average. Increases primarily for Vietnam (132,500 RB, including decreases of 900 RB), Turkey (67,800 RB), Pakistan (36,000 RB), India (24,200 RB, including 400 RB switched from Sri Lanka), and Bangladesh (18,700 RB, including decreases of 200 RB), were offset by reductions for Switzerland (3,700 RB), Nicaragua (1,300 RB), and Sri Lanka (400 RB). Net sales of 14,100 RB for 2026/2027 primarily for Costa Rica (13,200 RB), Indonesia (9,300 RB), South Korea (6,500 RB), Bangladesh (5,300 RB), and Portugal (3,500 RB), were offset by reductions for Japan (25,000 RB). Exports of 342,700 RB were down 4 percent from the previous week and 2 percent from the prior 4-week average. The destinations were primarily to Vietnam (126,200 RB), China (39,000 RB), India (37,100 RB), Pakistan (32,900 RB), and Bangladesh (32,100 RB). Net sales of Pima totaling 6,500 RB for 2025/2026 were down 58 percent from the previous week and from the prior 4-week average. Increases were primarily for China (2,900 RB, including decreases of 100 RB), India (1,400 RB), Thailand (900 RB), Bangladesh (500 RB), and Japan (400 RB). Exports of 10,600 RB were up 40 percent from the previous week and 10 percent from the prior 4-week average. The destinations were primarily to India (4,300 RB), Pakistan (2,800 RB), Costa Rica (1,300 RB), Peru (1,200 RB), and Bangladesh (500 RB). Exports for Own Account: For 2025/2026, exports for own account totaling 4,500 MT to India were applied to new or outstanding sales.

Source: Export Sales Reporting Division, Foreign Agricultural Service, USDA.  
NOTE: Data may not add due to rounding.

April 9, 2026

## American Pima Spot Quotations

American Pima quotations are for cotton equal to the Official Standards, net weight, in mixed lots, UD Free, FOB warehouse. 1/

<i>AMERICAN PIMA SPOT QUOTATIONS</i>					
Color	Leaf	Staple			
		44	46	48	50
1	1	140.75	146.50	148.25	148.25
	2	140.50	146.25	148.00	148.00
	3	133.75	141.50	142.50	142.50
	4				
	5				
	6				
2	1	140.50	146.25	148.00	148.00
	2	140.25	146.00	147.75	147.75
	3	133.50	141.25	142.25	142.25
	4	123.50	131.75	132.75	132.75
	5				
	6				
3	1	132.25	140.00	141.00	141.00
	2	129.75	137.50	138.50	138.50
	3	127.50	135.25	136.25	136.25
	4	118.50	126.25	127.25	127.25
	5	102.50	109.75	110.75	110.75
	6				
4	1	113.50	121.25	123.00	123.00
	2	113.25	121.00	122.25	122.25
	3	112.00	119.75	120.75	120.75
	4	107.00	114.75	115.75	115.75
	5	95.75	103.50	104.50	104.50
	6				
5	1				
	2	90.25	100.25	100.25	100.25
	3	90.25	99.75	100.00	100.00
	4	90.25	94.25	94.25	94.25
	5	90.00	94.00	94.00	94.00
	6				
6	1				
	2	82.50	85.50	85.50	85.50
	3	82.50	85.50	85.50	85.50
	4	82.50	85.50	85.50	85.50
	5	82.25	85.25	85.25	85.25
	6	81.75	84.75	84.75	84.75

**The current Pima spot quotations represent prices from local sales, export sales, and offerings last reported on March 31, 2026.**

<b>Mike</b>	
Range	Diff.
26 & Below	-2000
27-29	-1500
30-32	-1000
33-34	-500
35 & Above	0

<b>Strength</b>	
<i>(Grams per Tex)</i>	
Range	Diff.
34.9 & Below	-1650
35.0 – 35.9	-1400
36.0 – 36.9	-1150
37.0 – 37.9	-800
38.0 – 38.9	0
39.0 – 39.9	0
40.0 & Above	0

<b>Extraneous Matter</b>	
Type - Level	Diff.
Prep - Level 1	-810
Prep - Level 2	-1095
Other - Level 1	-715
Other - Level 2	-1035
Plastic - Level 1	-4000
Plastic - Level 2	-4000

1/ Pima spot quotations for color-leaf-staple combinations not quoted will be included as sales of those qualities which are reported.