

DAILY DIRECT HOGS PLANT DELIVERED as of 1:30 PM				
Negotiated Barrow and Gilt:		Carcass Base Price		Live Price
<u>NATIONAL - AMS 2675/LM_HG203:</u>				
Range:	\$89.00	\$92.50	\$62.00	\$73.00
Weighted Average:	\$91.88		\$70.01	
Change from Prior Day:	\$1.11		(-\$0.23)	
Head Count:	3,545		1,136	
<u>IOWA/MINNESOTA - AMS 2675/LM_HG206:</u>				
Weighted Average:	\$91.80		*	
Change from Prior Day:	\$1.00		*	
<u>WESTERN CORNBELT - AMS 2675/LM_HG212:</u>				
Weighted Average:	\$91.88		*	
Change from Prior Day:	\$0.94		*	
<u>EASTERN CORNBELT - AMS 2675/LM_HG210:</u>				
Weighted Average:	*		\$72.47	
Change from Prior Day:	*		\$0.23	

*Price not reported due to confidentiality.

NATIONAL DAILY PORK REPORT FOB PLANT - AMS 2498/LM_PK602:

Carcass Cutout Values	95.14	Change:	(-3.46)
Primal Loin	87.14		(-2.59)
Primal Butt	116.95		3.90
Primal Picnic	71.58		(-2.92)
Primal Rib	165.19		(-6.39)
Primal Ham	86.43		(-1.82)
Primal Belly	128.07		(-14.48)
Total Loads	276.44		
Pork Cuts	238.83	Lds	
Trim/Process Pork	37.61	Lds	

DAILY HOG SLAUGHTER UNDER FIS - AMS 3208/SJ_LS710

Today (est)	494,000
Week Ago (est)	489,000
Year Ago (act)	490,629
Week to Date (est)	1,477,000
Same Period Last Week (est)	1,353,000
Same Period Last Year (act)	1,461,330

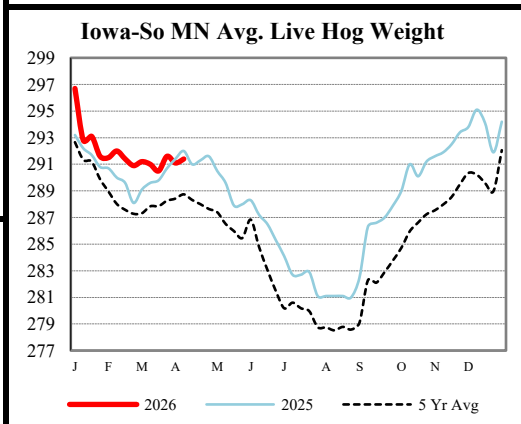
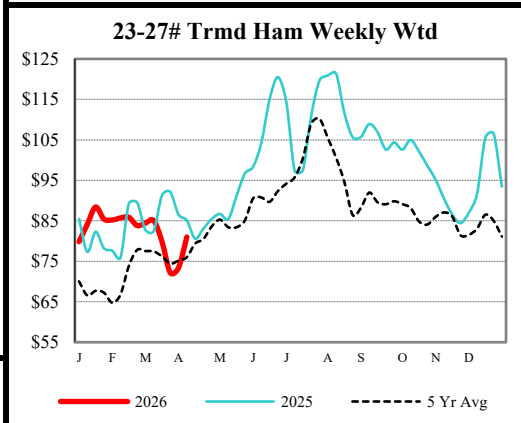
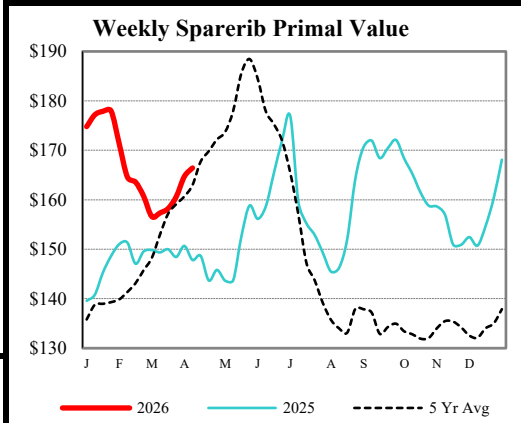
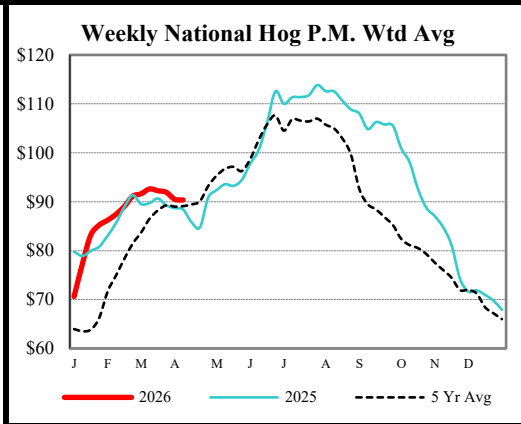
National Daily Direct Hog Prior Day Report - Slaughtered Swine - AMS 2511/LM_HG201

Producer Sold:	NEG	OMF	SPMF	OPA	Total
Head Count	4,250	25,326	126,710	76,948	234,178
Carcass Base Price	90.35	87.66	89.23	88.13	88.71
Average Net Price	91.75	90.09	90.73	90.09	90.46

Negotiated Formula included in total *Price not reported due to confidentiality.

IOWA-SOUTHERN MINNESOTA WEEKLY AVERAGE WEIGHT - AMS 2840/NW_LS720

For Week Ending Sat,	Head	Average
Apr 11, 2026	Ending Count	Weight
	4/11/2026	763,000 291.4
Week Ago:	4/4/2026	626,000 291.1
Year Ago:	4/12/2025	763,000 291.0



USDA Livestock, Poultry & Grain Market News
Des Moines, Iowa | PH 515-284-4460

Email: Desm.LPGMN@usda.gov

<https://mymarketnews.ams.usda.gov/viewReport/2872>

USDA AMS Livestock, Poultry & Grain Market News