

DAILY DIRECT HOGS PLANT DELIVERED as of 1:30 PM

Negotiated Barrow and Gilts:	Carcass Base Price		Live Price	
<u>NATIONAL - AMS 2675/LM HG203:</u>				
Range:	\$88.00	\$91.00	\$57.50	\$74.25
Weighted Average:	\$89.04		\$69.79	
Change from Prior Day:	(-\$0.32)		\$1.16	
Head Count	1,616		1,627	

IOWA/MINNESOTA - AMS 2675/LM HG206:

Weighted Average:	*	*
Change from Prior Day:	*	*

WESTERN CORNBELT - AMS 2675/LM HG212:

Weighted Average:	*	*
Change from Prior Day:	*	*

EASTERN CORNBELT - AMS 2675/LM HG210:

Weighted Average:	*	\$71.59
Change from Prior Day:	*	(-\$0.27)

*Price not reported due to confidentiality.

NATIONAL DAILY PORK REPORT FOB PLANT- AMS 2498/LM PK602:

Carcass Cutout Values		Chg:	
Primal Loin	99.14		0.44
Primal Butt	92.56		1.52
Primal Picnic	114.02		(-4.57)
Primal Rib	73.79		(-0.17)
Primal Ham	166.56		1.47
Primal Belly	84.96		0.97
Total Loads	148.78		1.88
Pork Cuts	279.30		
Trim/Process Pork	244.06	Lds	
	35.24	Lds	

DAILY HOG SLAUGHTER UNDER FIS - AMS 3208/SJ LS710

Today (est)	492,000
Week Ago (est)	367,000
Year Ago (act)	484,666

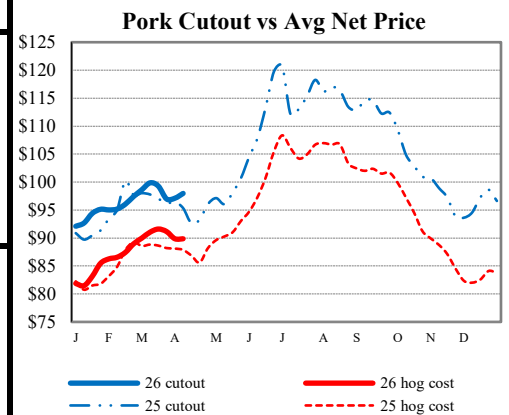
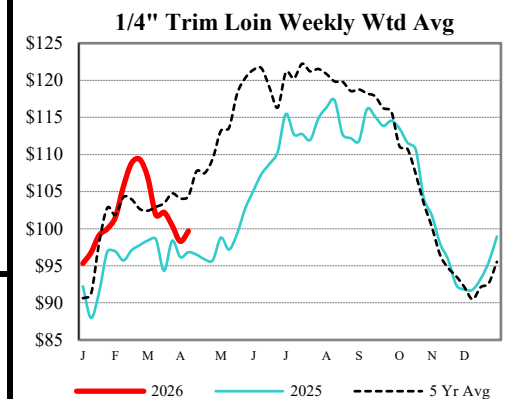
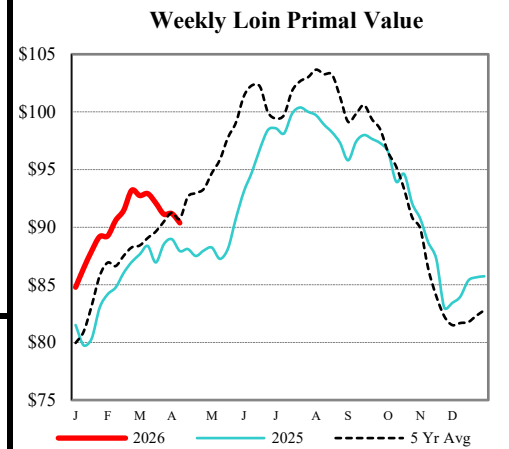
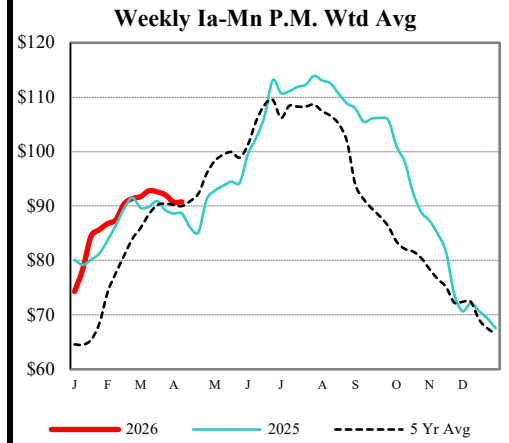
National Daily Direct Hog Prior Day Report - Slaughtered Swine - AMS 2511/LM HG201

Producer Sold:	NEG	OMF	SPMF	OPA	Total
Head Count	5,490	39,900	167,924	91,103	304,681
Carcass Base Price	90.36	86.37	88.74	87.95	88.23
Average Net Price	90.83	89.56	90.24	89.64	89.98

Negotiated Formula included in total *Price not reported due to confidentiality.

ESTIMATED WEEKLY PORK PRODUCTION UNDER FIS - AMS 3209/SJ LS712

Week Ending	Hog Slaughter	Million Pounds	Live Weight	Dressed Weight
04/11/26	2,472,000	539.4	292	218
04/04/26	2,396,000	523.0	292	218
2026 YTD	36,014,000	7875.2		
2025 YTD	36,427,000	7909.1		



USDA Livestock, Poultry & Grain Market News
 Des Moines, Iowa | PH 515-284-4460
 Email: Desm.LPGMN@usda.gov

<https://mymarketnews.ams.usda.gov/viewReport/2872>

USDA AMS Livestock, Poultry & Grain Market News