

| DAILY DIRECT HOGS PLANT DELIVERED as of 1:30 PM | | | | |
|--|-------|--------------------|---------|------------|
| Negotiated Barrow and Gilt: | | Carcass Base Price | | Live Price |
| <u>NATIONAL - AMS 2675/LM_HG203:</u> | | | | |
| Range: | * | * | \$62.25 | \$73.00 |
| Weighted Average: | * | | \$70.36 | |
| Change from Prior Day: | * | | \$2.79 | |
| Head Count: | 2,095 | | 1,558 | |
| <u>IOWA/MINNESOTA - AMS 2675/LM_HG206:</u> | | | | |
| Weighted Average: | * | | \$64.30 | |
| Change from Prior Day: | * | | * | |
| <u>WESTERN CORNBELT - AMS 2675/LM_HG212:</u> | | | | |
| Weighted Average: | * | | \$63.66 | |
| Change from Prior Day: | * | | * | |
| <u>EASTERN CORNBELT - AMS 2675/LM_HG210:</u> | | | | |
| Weighted Average: | * | | \$71.49 | |
| Change from Prior Day: | * | | \$3.61 | |

*Price not reported due to confidentiality.

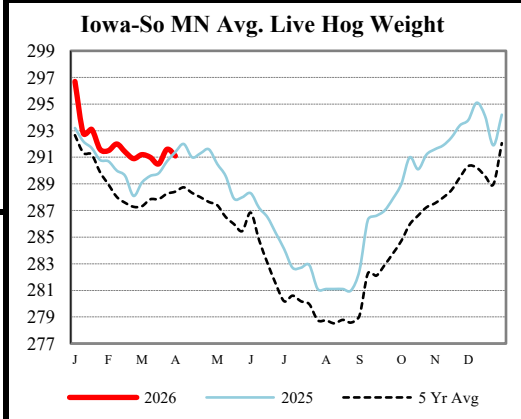
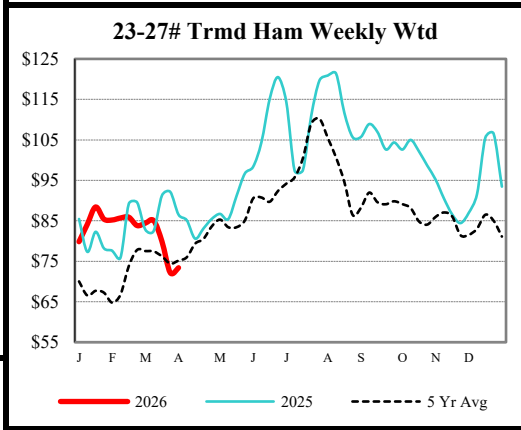
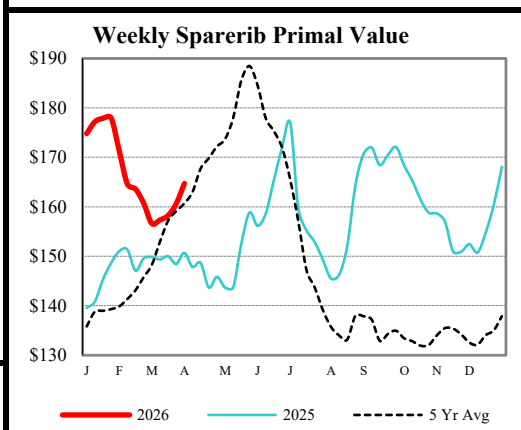
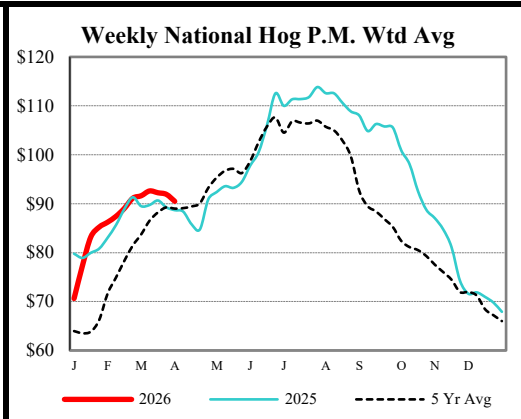
| <u>NATIONAL DAILY PORK REPORT FOB PLANT - AMS 2498/LM_PK602:</u> | | | | |
|--|--------|---------|---------|--|
| Carcass Cutout Values | 96.91 | Change: | (-0.91) | |
| Primal Loin | 90.34 | | 0.22 | |
| Primal Butt | 112.69 | | (-2.36) | |
| Primal Picnic | 74.76 | | (-1.62) | |
| Primal Rib | 165.23 | | (-3.00) | |
| Primal Ham | 79.84 | | 1.34 | |
| Primal Belly | 146.03 | | (-4.75) | |
| Total Loads | 298.52 | | | |
| Pork Cuts | 263.89 | Lds | | |
| Trim/Process Pork | 34.63 | Lds | | |

| <u>DAILY HOG SLAUGHTER UNDER FIS - AMS 3208/SJ_LS710</u> | |
|--|-----------|
| Today (est) | 489,000 |
| Week Ago (est) | 486,000 |
| Year Ago (act) | 486,109 |
| Week to Date (est) | 1,353,000 |
| Same Period Last Week (est) | 1,472,000 |
| Same Period Last Year (act) | 1,460,550 |

| <u>National Daily Direct Hog Prior Day Report - Slaughtered Swine - AMS 2511/LM_HG201</u> | | | | | |
|---|-------|--------|---------|--------|---------|
| Producer Sold: | NEG | OMF | SPMF | OPA | Total |
| Head Count | 4,395 | 27,169 | 126,035 | 74,686 | 232,449 |
| Carcass Base Price | 90.41 | 87.33 | 89.17 | 87.87 | 88.57 |
| Average Net Price | 90.38 | 89.77 | 90.31 | 89.78 | 90.08 |

Negotiated Formula included in total *Price not reported due to confidentiality.

| <u>IOWA-SOUTHERN MINNESOTA WEEKLY AVERAGE WEIGHT - AMS 2840/NW_LS720</u> | | | |
|--|---------------|--------------|---------------|
| For Week Ending Sat, | Head | Average | |
| Apr 04, 2026 | Ending | Count | Weight |
| | 4/4/2026 | 626,000 | 291.1 |
| Week Ago: | 3/28/2026 | 786,000 | 291.6 |
| Year Ago: | 4/5/2025 | 797,000 | 292.0 |



USDA Livestock, Poultry & Grain Market News
Des Moines, Iowa | PH 515-284-4460

Email: Desm.LPGMN@usda.gov

<https://mymarketnews.ams.usda.gov/viewReport/2872>

USDA AMS Livestock, Poultry & Grain Market News