

NATIONAL WEEKLY FEEDER & STOCKER CATTLE SUMMARY

USDA LIVESTOCK, POULTRY & GRAIN MARKET NEWS

St. Joseph, Missouri

Monday, April 6, 2026

for w/e Saturday, 04/04/26.

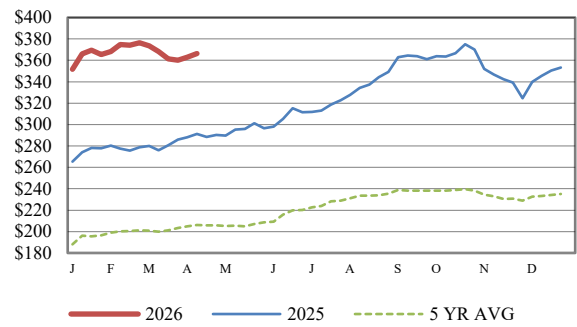
Email: stjoe.lpgmn@usda.gov

Receipts:	This Week	Last Week	Year Ago
SJ LS850	243,500	251,400	232,700

Compared to last week, steers and heifers sold 2.00 to 8.00 higher. Demand was good to very good nationwide as buyers were hungry to take on inventory as cash fed cattle moved higher again this week. As the cattle futures contracts continued to rise, so did cattle producers' optimism that the fat cattle market would improve. The CME Cattle Complex is nearing all-time highs for listed contracts after lower markets this winter. This Friday was Good Friday and some auctions in the North Plains didn't have sales on account of the holiday or a winter storm curtailed movement of stock in the Dakotas. Offerings are now including fall calves, old crop spring calves and yearling cattle as some of this week's offerings might have been slated for summer turnout but with the state in a drought some cattlemen have opted to sell their grass cattle to preserve their pastures for later use when the rains come along. There continues to be some variability especially with the fall calves coming to town now as health, fleshiness and weaning programs are playing a factor in where bidding ends. Ranchers are willing to pay up for those that they will get some compensatory gain from. In Kansas and TX/OK/NM, the negotiated sales finished the week 7.00 to mostly 8.00 higher at 245.00 to 246.00. Sales in Nebraska were 10.00 higher on a live basis at 245.00, while dressed sales were 13.00 higher at 385.00. Choice boxed beef closed on Friday at 387.78, 5.19 lower and Select closed at 386.19, 3.68 lower when compared to last week. Weekly Cattle Slaughter under federal inspection estimated at 533K, 10K more than last week and 53K less than a year ago. Auction volume this week included 56 percent weighing over 600 lbs and 42 percent heifers.

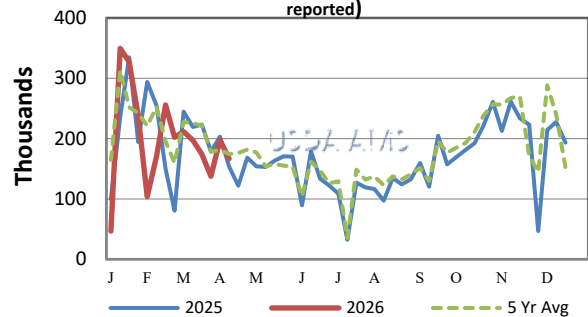
[More.....](#)

CME FEEDER CATTLE INDEX (\$/CWT)



NATIONWIDE REPORTED WEEKLY FEEDER CATTLE AUCTION RECEIPTS

(Receipts vary depending on the number of auctions reported)



REGIONAL WEIGHTED AVERAGE FEEDER STEER PRICES

NORTH CENTRAL REGION

Steers:	This Week	Last Week	Last Year
600-700 lbs	\$448.05	\$439.66	\$344.50
700-800 lbs	\$398.48	\$392.34	\$310.03
800-900 lbs	\$365.05	\$361.46	\$285.51

SOUTH CENTRAL REGION

Steers:	This Week	Last Week	Last Year
500-600 lbs	\$486.07	\$484.71	\$370.42
600-700 lbs	\$425.69	\$422.03	\$329.44
700-800 lbs	\$382.69	\$377.70	\$295.51

SOUTHEAST REGION

Steers:	This Week	Last Week	Last Year
400-500 lbs	\$521.33	\$517.74	\$387.72
500-600 lbs	\$470.85	\$464.08	\$347.86
600-700 lbs	\$408.42	\$410.38	\$314.96

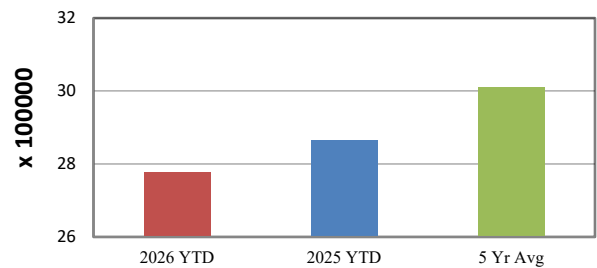
***Starting on April 13, 2026 this pdf report will be discontinued and a National Feeder & Stocker Cattle Dashboard will be available at:

https://mymarketnews.ams.usda.gov/National_Feeder_Stocker_Dashboard

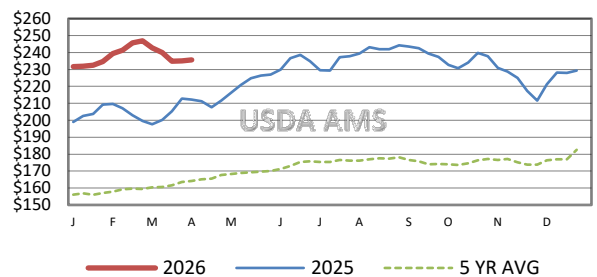
For detailed state-by-state feeder cattle quotes:

[State Feeder & Replacement Cattle Summaries](#)

YEAR TO DATE AUCTION RECEIPTS



5 AREA WEEKLY WEIGHTED AVERAGE SLTR STEER PRICE (\$/CWT)



USDA Livestock, Poultry, & Grain Market News

St. Joseph, Missouri

Phone: 202-720-1990



<http://www.ams.usda.gov/LSMarketNews>