



Weekly Cotton Market Review

Agricultural Marketing Service

Cotton and Tobacco Program ♦ Cotton Market News Division ♦ 3275 Appling Road ♦ Memphis, TN 38133 ♦ 901.384.3016

Mp_cn812

Vol. 107 No.35
April 3, 2026

Inside this Issue

[Market Overview](#)

[Spot Quotations](#)

[ICE Futures](#)

[Southeastern](#)

[Textile Mill Report](#)

[South Central](#)

[Southwestern](#)

[Western](#)

[Forward Contracting](#)

[Prospective Plantings](#)

[Pima Quotations](#)

Featured
[Staple Distribution](#)

[Cotton Market Reports](#)

[Subscribe to this report](#)

[Subscribe to all Cotton Market reports](#)

Spot quotations averaged 226 points higher than the previous week, according to the USDA, Agricultural Marketing Services Cotton and Tobacco Program. Quotations for the base quality of cotton (color 41, leaf 4, staple 34, mike 35-36 and 43-49, strength 27.0-28.9, and uniformity 81.0-81.9) in the seven designated markets, averaged 66.95 cents per pound for the week ending Thursday, April 2, 2026. The weekly average was up from 64.69 cents last week and from 63.30 cents reported in the corresponding period a year ago. Daily average quotations ranged from a low of 66.14 cents on Friday, March 27 to a season high of 67.60 cents on Thursday, April 2. Spot transactions reported in the Daily Spot Cotton Quotations for the week ended April 2 totaled 40,550 bales. This is compared to 15,336 reported last week and 39,900 bales reported the corresponding week a year ago. Total spot transactions for the season were 1,383,796 bales compared to 868,762 the corresponding week a year ago. The ICE May settlement price ended the week at 70.92 cents, compared to 69.41 cents last week.

41-4-34 Prices								
Date	SE	ND	SD	ETX-STX	WTX-KS-OK	DSW	SJV	7-MKT AVG
Mar 27	68.71	67.46	67.46	64.21	65.46	64.71	64.96	66.14
Mar 30	69.44	68.19	68.19	64.94	66.19	65.44	65.69	66.87
Mar 31	69.25	68.00	68.00	64.75	66.00	65.25	65.50	66.68
Apr 1	70.01	68.76	68.76	65.51	66.76	66.01	66.26	67.44
Apr 2	70.17	68.92	68.92	65.67	66.92	66.17	66.42	67.60
31-3-36 Prices								
Date	SE	ND	SD	ETX-STX	WTX-KS-OK	DSW	SJV	7-MKT AVG
Mar 27	74.46	72.21	71.71	70.96	69.46	70.71	77.36	72.41
Mar 30	75.19	72.94	72.44	71.69	70.19	71.44	78.09	73.14
Mar 31	75.00	72.75	72.25	71.50	70.00	71.25	77.90	72.95
Apr 1	75.76	73.51	73.01	72.26	70.76	72.01	78.66	73.71
Apr 2	75.92	73.67	73.17	72.42	70.92	72.17	78.82	73.87
Futures Settlement								Far Eastern A Index 1/
Date	May-26	Jul-26	Oct-26	Dec-26	Mar-27	May-27	Current	
Mar 27	69.46	71.70	73.78	74.02	74.94	75.19	80.10	
Mar 30	70.19	72.42	74.18	74.61	75.55	75.80	80.20	
Mar 31	70.00	72.13	74.16	74.34	75.31	75.57	80.95	
Apr 1	70.76	72.94	74.95	75.08	76.05	76.28	80.75	
Apr 2	70.92	73.05	75.02	74.98	75.84	76.10	81.50	
Spot Transactions								
Date	SE	ND	SD	ETX-STX	WTX-KS-OK	DSW	SJV	PIMA
Mar 27	525	0	0	0	6,553	2,541	0	0
Mar 30	0	0	0	0	5,391	0	0	0
Mar 31	1,036	0	0	0	2,566	0	0	500
Apr 1	12,630	0	0	0	6,701	0	0	500
Apr 2	0	0	0	299	2,308	0	0	175
Weekly Totals	14,191	0	0	299	23,519	2,541	0	1,175

Source: USDA, AMS, Cotton and Tobacco Program, 1/ Cotlook

Southeastern Markets Regional Summary

Danny Pino ♦ Macon, GA ♦ 478.752.3560 ♦ Danny.Pino@usda.gov

Spot cotton trading was active. Supplies were moderate. Demand was good. Producer offerings were moderate. Average local spot prices were higher. Trading of CCC-loan equities was inactive. Forward contracting has seen heightened interest.

Intervals of sunshine and cloudy skies were observed in the lower Southeast during the period. Daytime high temperatures were in the mid-60s to mid-80s. Evening scattered showers migrated through the region, pushing nighttime lows down into the low 40s, which rose back into the low 60s later in the week. The area received around one-half of an inch of precipitation. More rain is needed to replenish top-soil moisture. According to the U.S. Drought Monitor report, released on April 2, drought parameters remain strained in Georgia and intensified in Virginia. Cotton is expected to be planted mid-April. Growers continued to observe the price of inputs while considering planting intentions for the upcoming season. According to the National Agricultural Statistics Service's Annual Prospective Plantings report, released on March 31, 2026, cotton acreage is expected to increase by 65,000 acres in Georgia, but decline by 3,000 acres in Virginia. Producers attended local meetings on state and national levels.

A mixture of sunny and cloudy skies characterized the weather pattern across the upper Southeast. Daytime high temperatures in the low 60s warmed into the low 80s. Overnight lows were in the low 40s to low 60s. Accumulated precipitation totals

measured from trace amounts to around one-half of an inch. More rain is needed to rejuvenate soils to adequate moisture levels. According to the U.S. Drought Monitor report, released on April 2, drought conditions have intensified in North and South Carolina. Grower concern due to elevated input prices continued to rise as planting decisions are being considered. According to the National Agricultural Statistics Service's Annual Prospective Plantings report, released on March 31, 2026, cotton acreage is expected to increase by 55,000 acres in North Carolina, and is projected to be at 170,000 acres in South Carolina, in line with last year's total acreage.

[Textile Mill](#)

Domestic mill buyers inquired for a moderate volume of color 41, leaf 4, and staple 35 and longer for second quarter through fourth quarter delivery. No sales and no additional inquiries were reported. Yarn demand remained moderate to good. Mill buyers maintained a cautious undertone.

Demand through export channels was moderate. Agents for mills in Vietnam inquired for a moderate volume of color 31, leaf 3, and staple 36 and longer for second quarter through third quarter shipment. No sales were reported.

[Trading](#)

- A mixed lot containing a heavy volume of mostly color 41 and better, leaf 2-4, staple 37-39, mike 37-49, strength 30-33, and uniformity 80-84 sold for around 75.25 cents per pound, FOB car/truck, Georgia terms (Rule 5, compression charges paid, 30 days free storage).
- A moderate volume of color 31-51, leaf 2 and 3, staple 32-37, mike 37-49, strength 29-33, and uniformity 78-82 sold for around 70.75 cents, same terms as above.
- Mixed lots containing a heavy volume of color 41 and better, leaf 1-5, staple 37 and 38, mike 35-49, strength 27-33, and uniformity 80-83, sold for around 300 to 425 points on the ICE May futures, same terms as above.

South Central Markets Regional Summary

Aerielle McDaniel ♦ Memphis, TN ♦ 901.384.3016 ♦ Aerielle.McDaniel@usda.gov

North Delta

Trading of spot cotton and CCC-loan equities was inactive. Supplies of available cotton were light. Producer offerings were light. Demand was very light. Average local spot prices were higher. There was light producer interest in forward contracting. Industry continued to monitor ICE Futures settlement prices as they climbed above the 70.00 cent mark.

A mixture of sunny and cloudy skies characterized the weather pattern during most of the period. Daytime highs were in the 80s, and nighttime lows were in the 60s. Strong, gusty winds pushed through the region at 25 miles per hour, dipping daytime high temperatures into the 70s. Accumulated precipitation totals measured from trace amounts to around one-quarter of an inch. Additional moisture is needed to replenish soils ahead of planting. Fieldwork was active in Arkansas. According to the National Agricultural Statistic's Service's Annual Prospective Plantings report, released on March 31, 2026, cotton acreage is expected to decline by 50,000 acres in Arkansas, increase by 5,000 acres in Missouri, and by 45,000 acres in Tennessee. Total Upland cotton areas are projected to be up by 4 percent compared to last year. Planting is projected to begin near the end of April or the beginning of May. Virtual and in-person industry meetings were planned and attended by all interested parties.

South Delta

Spot cotton trading was inactive. Supplies of available cotton were light. Producer offerings were light. Demand was very light. Average local spot prices were higher. Trading of CCC-loan equities was inactive. There was no interest in forward contracting. Industry continued to monitor ICE Futures settlement numbers as they rose above the 70.00 cent mark.

Intervals of sunny to partly cloudy skies dominated the weather pattern in the South Delta during the week. Daytime highs were in the 80s, and overnight lows were in the 60s, remaining steady throughout the period. Spotty rain showers in the region dampened soils in mottled areas, but not enough to revitalize moisture levels in drought-stressed fields. The area received less than one-quarter of an inch of precipitation. Additional rain would be beneficial to ease drought conditions. Planters began to roll in the Mississippi Delta, although growers are becoming more concerned about the cost of inputs essential to the production of cotton. According to the National Agricultural Statistics Service's Annual Prospective Plantings report, released on March 31, 2026, acreage is predicted to increase in Louisiana by 20,000 acres, but decrease by 30,000 acres in Mississippi, compared to last year's totals. Total Upland cotton areas are projected to be up by 4 percent compared to last year. Virtual and in-person industry meetings were planned and attended by all interested parties.

Trading

North Delta

- No trading activity was reported.

South Delta

- No trading activity was reported.

Southwestern Markets Regional Summary

Bethany Lindgren ♦ Memphis, TN ♦ 901.384.3016 ♦ Bethany.Lindgren@usda.gov

Jane Byers-Angle ♦ Lubbock, TX ♦ 806.283.9389 ♦ Jane.Byers-Angle@usda.gov

East Texas-South Texas

Spot cotton trading was slow. Supplies and producer offerings were light. Demand was light. Average local spot prices were higher. Light forward contracting was reported. Trading of CCC-loan equities was inactive. Foreign mill inquiries were light to moderate. Interest was best from China, Pakistan, Turkey, and Vietnam.

Across central Texas, mostly sunny and partly cloudy conditions were observed during the period, until thunderstorms late in the week entered the region, producing light rain. Daytime high temperatures were in the 80s and 90s. Nighttime lows were in the 60s and 70s. Accumulated rainfall totals measured from trace amounts up to over one-quarter of an inch of moisture in some locales. Planting was underway in areas of central Texas, and progressing well under mostly favorable conditions. In South Texas, windy conditions with overcast skies prevailed during the period. Daytime high temperatures were in the 70s to 90s, with nighttime temperatures in 60s to 70s. No rainfall was reported, but chances for showers were in the forecast for the coming week, and any precipitation would be beneficial to improve parched soil conditions and kickstart seedling growth in planted fields. Producers continued outside activities, with planters working long days to finish ahead of forecast showers that could delay fieldwork in the Coastal Bend. Seedlings were emerging, and stands were progressing well. Planting is expected to increase in the Upper Coast after the anticipated rainfall. Producers in the lower Rio Grande Valley worked to wrap up planting before the insurance deadline of March 31. Overall producer sentiment remains lackluster due to ongoing dry conditions and the cost of production.

West Texas-Kansas-Oklahoma

Spot cotton trading was active. Supplies were moderate. Producer offerings were light. Demand was light. Average local spot prices were higher. Producer interest in forward contracting was light. Trading of CCC-loan equities was inactive. Foreign mill inquiries were light to moderate. Interest was best from China, Pakistan, Turkey, and Vietnam.

Texas saw a sharp cold front swing early in the period that pushed temperatures from early-summer warmth into much cooler conditions, with daytime highs ranging from the low 50s to low 90s and overnight lows dropping into the 30s to 60s. Wind gusts over 60 miles per hour dried out already-parched soils and significantly increased wildfire danger. A pop-up thunderstorm brought from trace amounts to more than one inch of moisture, and some hail at a few locations. The Rolling Plains received the heaviest amounts of rainfall. A slow, soaking rain would be a beneficial shift to restore top-soil moisture and reduce fire risk across the state. Cotton ginning continued at the few remaining facilities processing the end of the crop.

Kansas moved from cold, windy weather to clearer, sunnier conditions late in the reporting period, with daytime temperatures ranging from the upper 50s to upper 80s and overnight lows fluctuating between the 30s and 60s. Western parts of the state continued to struggle with a lack of moisture, while eastern cotton-growing counties benefited from a stronger soil-moisture profile from recent rainfall. Fieldwork progress remained limited as persistent gusty winds made outdoor operations difficult.

Oklahoma saw an early-period cold front that ushered in cooler temperatures and wind gusts exceeding 50 miles per hour, prompting Red Flag Warnings and Wind Advisories from the National Weather Service. Daytime highs ranged from the low 50s to the low 90s, while overnight lows held in the 40s and 50s. The strong winds intensified wildfire activity and worsened already drought-stressed conditions across much of the state. Moisture was welcomed late in the period which deposited from trace amounts up to three-quarters of an inch. As weather allowed, modules were moved to gin yards, and ginning operations continued.

Southwestern Markets Regional Summary

Bethany Lindgren ♦ Memphis, TN ♦ 901.384.3016 ♦ Bethany.Lindgren@usda.gov
Jane Byers-Angle ♦ Lubbock, TX ♦ 806.698.4648 ♦ Jane.Byers-Angle@usda.gov

Trading

East Texas/South Texas

- A light volume of 2024-crop cotton, color 11 and 21, leaf 2, staple 37 and 38, mike averaging 38.2, strength averaging 29.3, and uniformity averaging 80.6 sold for 68.00 cents per pound, FOB warehouse (compression charges not paid).
- A moderate volume of color 32 and better, leaf 3-5, staple 36-39, mike averaging 45.8, strength averaging 32.8, and uniformity averaging 82.9 sold for around 63.75 cents, same terms as above.

West Texas, Kansas, & Oklahoma

- In Texas, even-running lots containing a heavy volume of color 31 and better, leaf 3 and better, staple 36-39, mike 35-19, strength 28-33, and uniformity 77-82 sold for 68.50 to 70.00 cents per pound, FOB car/truck, (compression charged not paid).
- In Kansas, mixed lots containing a heavy volume of mostly color 42 and better, leaf 2-6, staple 35-38, mike 35-47, strength 27-33, uniformity 76-83, and 75 percent extraneous matter traded for 58.00 to 62.50 cents, same terms as above.
- In Oklahoma, an even-running lot containing a moderate volume of color 21 and 31, leaf 2 and 3, staple 39, mike 38-46, strength 31-35, and uniformity 80-84 sold for around 71.50 cents, same terms as above.
- A light volume of CCC-loan equities traded for around 6.00 cents.

Western Markets Regional Summary

Bethany Lindgren ♦ Memphis, TN ♦ 901.384.3016 ♦ Bethany.Lindgren@usda.gov

Desert Southwest (DSW)

Spot cotton trading was inactive. Supplies and producer offerings were light. Demand was light. Producer interest in forward contracting was light. Average local spot prices were higher. No forward contracting or domestic mill activity was reported. Foreign mill inquiries were light.

Sunny and mostly clear skies were observed in the DSW during the period. Daytime highs were slightly cooler, with highs in the 80s and 90s. Nightly lows were in the 50s to 60s. Infrequent showers produced from trace amounts up to less than one-quarter of an inch of moisture in areas of central Arizona. In the Safford Valley, ideal weather conditions allowed planting to progress without interruption. Seedlings were breaking through the ground, and cotton stands were developing well. In El Paso, TX, conditions remain very dry, but planting is expected to begin soon. According to the National Agricultural Statistics Service's Prospective Plantings report, released on March 31, Upland acreage was expected to be set at an estimated 80,000 acres in Arizona and 30,000 acres in New Mexico, a record low for the state if realized.

San Joaquin Valley (SJV)

Spot cotton trading was inactive. Supplies and demand were light. No forward contracting or domestic mill activity was reported. Average local prices were higher. Foreign mill inquiries were light.

Predominately sunny skies with some clouds were briefly overtaken by spotty showers mid-week in the SJV. Daytime temperatures cooled into the 70s and 80s. Nighttime lows were mostly in the 60s and 70s but dipped into the 40s and 50s in some areas of the region. Accumulated moisture totals were below

one-quarter of an inch. Planting was progressing in the SJV and was underway in the Sacramento Valley. According to the National Agricultural Statistics Service's Prospective Plantings report, released on March 31, Upland acreage in California is expected to increase to 25,000 acres.

American Pima (AP)

Spot cotton trading was active. Supplies were moderate. Demand was light. No forward contracting or domestic mill activity was reported. Average local spot prices were lower. Foreign mill inquiries were light.

Sunshine and clear skies continued across the Far West this week. Daytime highs were in the 70s to the 90s. Overnight lows ranged from the 40s to the 70s. Spotty rainfall produced from trace amounts up to one-quarter of an inch of precipitation. Planting continued uninterrupted in the SJV. Stands were advancing well under ideal weather conditions. In El Paso, TX, dry conditions continue, but planting is expected to commence soon. According to the National Agricultural Statistics Service's Prospective Plantings report, released on March 31, American Pima acreage is expected to be lower compared to last season at 130,000 acres. California is expected to plant up to 80,000 acres, followed by 20,000 in Texas, 15,000 in Arizona, and 15,000 acres in New Mexico.

Trading

Desert Southwest

- No trading activity was reported.

San Joaquin Valley

- No trading activity was reported.

American Pima

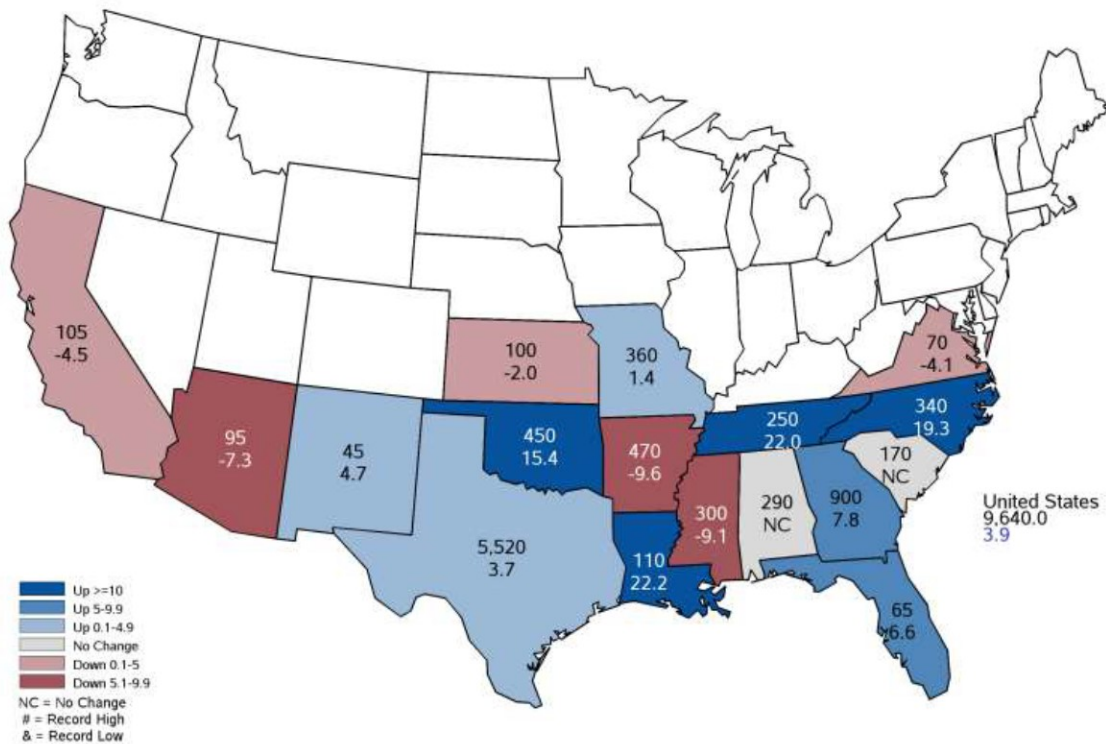
- A heavy volume of cotton color 2-4, leaf 1-4, staple 48 and 50 sold for around 1.42 cents per pound.

USDA NASS, March Prospective Plantings Report

The USDA National Agricultural Statistics Service (NASS) released the March Prospective Plantings report on March 31, 2026. According to the report, “Growers intend to plant an estimated 9.64 million acres, up 4 percent from last year. Upland area is estimated at 9.51 million acres, up 4 percent from 2025. American Pima area is estimated at 130,000 acres, down 8 percent from 2025. Texas and Georgia, the two largest cotton-producing States, are both expecting increases in area planted to all cotton. If realized, New Mexico is estimated to have record low upland cotton planted acres”.



2026 Cotton Planted Area (000) Acres and Percent Change from Previous Year



**United States Department of Agriculture
National Agricultural Statistics Service**

March 31, 2026

Source: https://www.nass.usda.gov/Charts_and_Maps/graphics/cotnacm.pdf
 For complete report click [here](#).

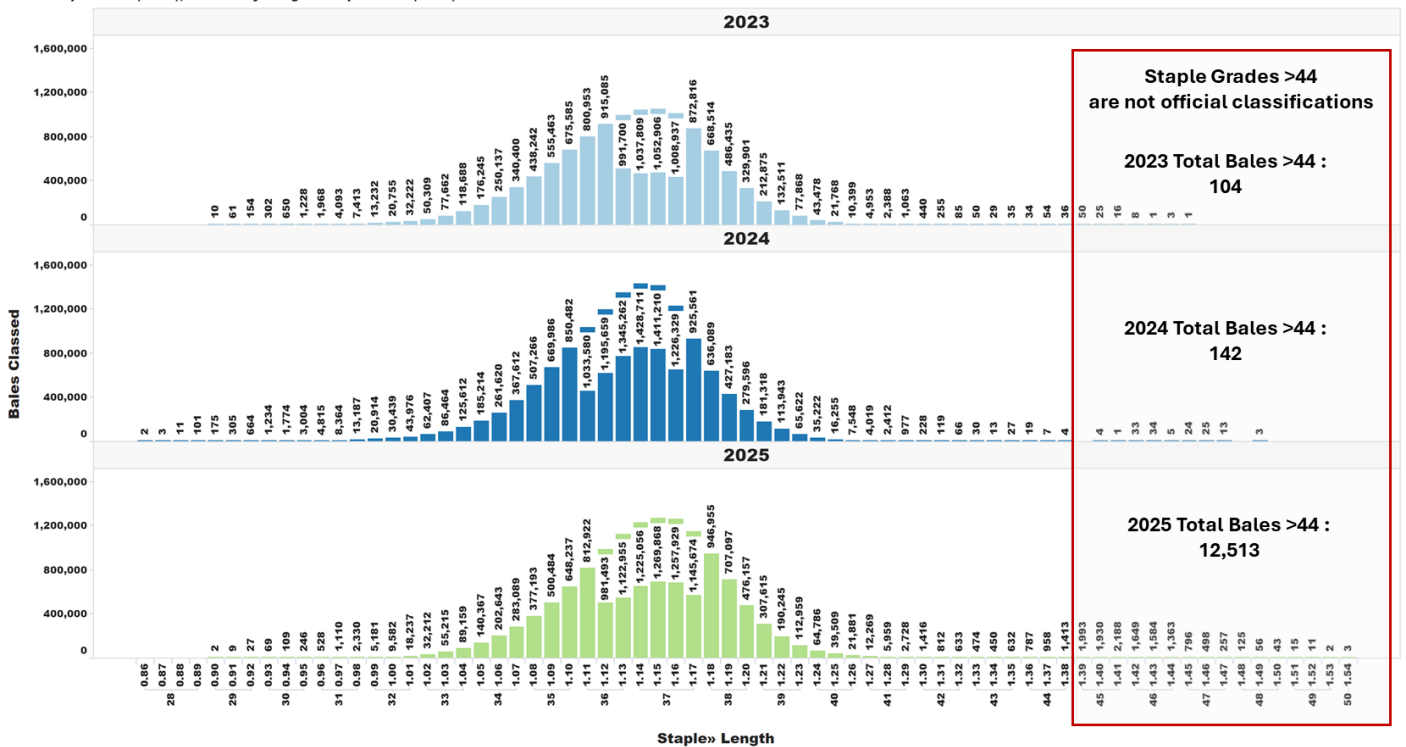
U.S. Upland Cotton Crop Staple Distribution

The official staple lengths for U.S. Upland Cotton, measured in 32nds of an inch, range from "24" to "44 & +". Currently, the longest staple included in the AMS Cotton Market News' weekly quality reports is the "40 & +" designation. Market News is in the process of updating its weekly reports to include all official staple length designations.

For more detailed information, AMS Cotton Market News posts daily per-bale quality data, which includes the instrument measurement for length in inches. You can find this data by office (<https://mymarketnews.ams.usda.gov/viewReport/3471>) and state (<https://mymarketnews.ams.usda.gov/viewReport/3472>). Using this data, Market News has calculated implied staple designations for lengths exceeding 1.35 inches. The accompanying chart shows the number of bales for each staple designation, with staples greater than "44" represented as implied staple lengths. Implied staple lengths are calculated and provided for informational purposes only and are not official designations.

Staple Distribution of U.S. Upland Cotton: 2023-2025 Crops (Classed through April 2, 2026)

Official Staple Grade (28-44), Unofficially Assigned Staple Grade (45-48)



Forward Contracting

Upland cotton growers in the United States had booked 1 percent of their expected acreage by the end of March this season. This was above the percentage of acreage booked through the same period last year. Contracting has been equally active in Southeastern and Southwestern states, where 1 percent of the crop had been booked, compared to less than one percent the previous year. In South Central states, less than one percent was under contract, the same as the previous year. Western states' growers had no reported forward contracting this year and the previous year. These estimates were based on the National Agricultural Statistics Board's March Prospective Plantings report and information collected by the Cotton and Tobacco Program's Market News Division.



Cotton and Tobacco Program
3275 Appling Road, Memphis, TN 38133
(901) 384-3016

Email us with accessibility issues with this report.

Cotton Forward Contracting Report
Forward contracting of Upland cotton by growers
As of March 31, crops of 2017-2026
and prospective plantings, 2026 crop 1/

States	Cotton Crops										Prospective Plantings 2/ 1,000 acres
	2017	2018	2019	2020	2021	2022	2023	2024	2025	2026	
	Pct.	Pct.	Pct.	Pct.	Pct.	Pct.	Pct.	Pct.	Pct.	Pct.	
Alabama	6	4	*	-	*	3	*	7	-	*	290
Florida	22	*	-	-	*	5	-	8	-	2	65
Georgia	5	8	2	*	*	5	1	1	-	*	900
North Carolina	4	1	1	*	4	5	*	4	-	1	340
South Carolina	7	1	*	-	1	2	1	*	1	*	170
Virginia	13	4	3	1	3	14	1	1	-	*	70
Southeastern States	6	5	1	*	1	5	1	3	*	1	1,835
Arkansas	6	22	5	-	8	15	-	6	*	1	470
Louisiana	35	13	14	-	-	-	-	2	-	-	110
Mississippi	7	8	1	-	5	4	-	*	-	-	300
Missouri	4	3	-	-	*	-	-	5	-	*	360
Tennessee	6	2	1	-	3	-	-	*	-	*	250
South Central States	9	10	4	-	4	6	-	3	*	*	1,490
Kansas	-	-	*	-	-	-	-	1	-	-	100
Oklahoma /3	-	-	*	-	-	-	-	*	-	-	450
Texas	4	3	*	-	4	7	*	2	*	1	5,500
Southwestern States	3	3	*	-	4	7	*	2	*	1	6,050
Arizona	4	1	-	-	35	1	-	-	-	-	80
California	-	-	-	-	-	-	-	-	-	-	25
New Mexico	-	-	-	-	-	-	-	-	-	-	30
Western States	2	*	-	-	23	1	-	-	-	-	135
United States	5	4	1	*	3	6	*	2	*	1	9,510

1/ Contracting estimates do not include cotton consigned to marketing organizations but do include cotton contracted with marketing organizations.

2/ Agricultural Statistics Board, NASS, USDA. 3/ Includes Kansas, 2017-2017 crops. * Less than 0.5 percent.

Prospective Plantings

All cotton planted area for 2026 is estimated at 9.64 million acres, up 4 percent from last year. Upland area is estimated at 9.51 million acres, up 4 percent from 2025. American Pima area is estimated at 130,000 acres, down 8 percent from 2025.

Cotton Area Planted by Type – States and United States: 2024-2026

Type and State	Area planted			Percent of previous year (percent)
	2024 (1,000 acres)	2025 (1,000 acres)	2026 ¹ (1,000 acres)	
Upland				
Alabama	400.0	290.0	290.0	100
Arizona	96.0	87.0	80.0	92
Arkansas	650.0	520.0	470.0	90
California	21.0	18.0	25.0	139
Florida	85.0	61.0	65.0	107
Georgia	1,100.0	835.0	900.0	108
Kansas	131.0	102.0	100.0	98
Louisiana	155.0	90.0	110.0	122
Mississippi	520.0	330.0	300.0	91
Missouri	400.0	355.0	360.0	101
New Mexico	42.0	30.0	30.0	100
North Carolina	410.0	285.0	340.0	119
Oklahoma	435.0	390.0	450.0	115
South Carolina	225.0	170.0	170.0	100
Tennessee	265.0	205.0	250.0	122
Texas	5,950.0	5,300.0	5,500.0	104
Virginia	91.0	73.0	70.0	96
United States	10,976.0	9,141.0	9,510.0	104
American Pima				
Arizona	14.0	15.5	15.0	97
California	145.0	92.0	80.0	87
New Mexico	15.0	13.0	15.0	115
Texas	33.0	21.0	20.0	95
United States	207.0	141.5	130.0	92
All				
Alabama	400.0	290.0	290.0	100
Arizona	110.0	102.5	95.0	93
Arkansas	650.0	520.0	470.0	90
California	166.0	110.0	105.0	95
Florida	85.0	61.0	65.0	107
Georgia	1,100.0	835.0	900.0	108
Kansas	131.0	102.0	100.0	98
Louisiana	155.0	90.0	110.0	122
Mississippi	520.0	330.0	300.0	91
Missouri	400.0	355.0	360.0	101
New Mexico	57.0	43.0	45.0	105
North Carolina	410.0	285.0	340.0	119
Oklahoma	435.0	390.0	450.0	115
South Carolina	225.0	170.0	170.0	100
Tennessee	265.0	205.0	250.0	122
Texas	5,983.0	5,321.0	5,520.0	104
Virginia	91.0	73.0	70.0	96
United States	11,183.0	9,282.5	9,640.0	104

¹ Intended plantings in 2026 as indicated by reports from farmers.

[For complete report click here.](#)

Number of Bales in Certificated Stocks

Delivery Points	Stocks as of 4-2-2026	Awaiting Review	Non-Rain Grown Cotton
Dallas/FT. Worth, TX	87,759	0	0
Galveston, TX	10,658	0	0
Greenville, SC	0	0	0
Houston, TX	16,236	0	0
Memphis, TN	12	0	0
Total	114,665	0	0

World market prices for upland cotton, in cents per pound, in effect from 12:01 a.m., EDT, Friday through midnight, EDT, Thursday

Description	2025-2026					
	Feb 27	Mar	Mar	Mar	Mar 27	Apr
	Mar 05	06-12	13-19	20-26	Apr 02	03-09
Adjusted world price 1/	51.84	51.44	51.50	54.22	54.47	56.99
Course count adjustment	0.00	0.00	0.00	0.00	0.00	0.00
Loan Deficiency Payment (LDP)	0.16	0.56	0.50	0.00	0.00	0.00
Fine count adjustment 2024	0.00	0.00	0.00	0.00	0.00	0.00
Fine count adjustment 2025	0.00	0.00	0.00	0.00	0.00	0.00

1/ Color 41, leaf 4, staple 34, mike 35-36 & 43-49, strength readings of 26.0-28.9 grams per tex, length uniformity of 80.0-81.9 percent.
Source: Farm Service Agency, USDA.

Description	2024-2025		2025-2026	
	Through March 28, 2025		Through March 26, 2026	
	Week	Mkt. Year	Week	Mkt. Year
Outstanding sales	-	4,054,200	-	3,867,700
Exports	383,800	6,383,800	356,700	6,060,200
Total export commitments	-	10,438,000	-	9,927,900
New sales	153,800	-	382,100	-
Buy-backs and cancellations	24,700	-	10,600	-
Net sales	129,100	-	371,500	-
Sales next marketing year	40,000	1,049,200	117,300	1,134,400

Net sales of Upland totaling 371,500 RB for 2025/2026 were up noticeably from the previous week and up 94 percent from the prior 4-week average. Increases primarily for Vietnam (170,500 RB, including 3,300 RB switched from China and decreases of 4,900 RB), Turkey (59,400 RB, including decreases of 100 RB), China (55,000 RB, including decreases of 100 RB), Pakistan (45,600 RB), and Bangladesh (9,200 RB), were offset by reductions for Indonesia (1,500 RB) and Honduras (300 RB). Net sales of 117,300 RB for 2026/2027 were primarily for Turkey (39,600 RB), Mexico (37,000 RB), Japan (32,100 RB), Thailand (3,800 RB), and Vietnam (3,500 RB). Exports of 356,700 RB were down 11 percent from the previous week, but up 8 percent from the prior 4-week average. The destinations were primarily to Vietnam (104,100 RB), Pakistan (38,600 RB), Bangladesh (36,100 RB), Turkey (32,000 RB), and India (28,600 RB). Net sales of Pima totaling 15,500 RB for 2025/2026 were down 50 percent from the previous week, but up 16 percent from the prior 4-week average. Increases were primarily for China (8,500 RB), India (3,500 RB), Peru (2,000 RB), Vietnam (500 RB), and Turkey (300 RB). Exports of 7,600 RB were down 3 percent from the previous week and 30 percent from the prior 4-week average. The destinations were primarily to India (3,200 RB), Pakistan (1,400 RB), Egypt (1,300 RB), China (500 RB), and Peru (300 RB). Exports for Own Account: For 2025/2026, new exports for own account totaling 1,600 RB were to Vietnam (1,200 RB) and Bangladesh (400 RB). Exports for own account totaling 700 MT to Vietnam were applied to new or outstanding sales. The current exports for own account outstanding balance of 8,800 RB were to India (5,300 RB), Vietnam (2,600 RB), Turkey (500 RB), and Bangladesh (400 RB).

Source: Export Sales Reporting Division, Foreign Agricultural Service, USDA.

April 2, 2026

NOTE: Data may not add due to rounding.

American Pima Spot Quotations

American Pima quotations are for cotton equal to the Official Standards, net weight, in mixed lots, UD Free, FOB warehouse. 1/

<i>AMERICAN PIMA SPOT QUOTATIONS</i>					
Color	Leaf	Staple			
		44	46	48	50
1	1	140.75	146.50	148.25	148.25
	2	140.50	146.25	148.00	148.00
	3	133.75	141.50	142.50	142.50
	4				
	5				
	6				
2	1	140.50	146.25	148.00	148.00
	2	140.25	146.00	147.75	147.75
	3	133.50	141.25	142.25	142.25
	4	123.50	131.75	132.75	132.75
	5				
	6				
3	1	132.25	140.00	141.00	141.00
	2	129.75	137.50	138.50	138.50
	3	127.50	135.25	136.25	136.25
	4	118.50	126.25	127.25	127.25
	5	102.50	109.75	110.75	110.75
	6				
4	1	113.50	121.25	123.00	123.00
	2	113.25	121.00	122.25	122.25
	3	112.00	119.75	120.75	120.75
	4	107.00	114.75	115.75	115.75
	5	95.75	103.50	104.50	104.50
	6				
5	1				
	2	90.25	100.25	100.25	100.25
	3	90.25	99.75	100.00	100.00
	4	90.25	94.25	94.25	94.25
	5	90.00	94.00	94.00	94.00
	6				
6	1				
	2	82.50	85.50	85.50	85.50
	3	82.50	85.50	85.50	85.50
	4	82.50	85.50	85.50	85.50
	5	82.25	85.25	85.25	85.25
	6	81.75	84.75	84.75	84.75

The current Pima spot quotations represent prices from local sales, export sales, and offerings last reported on March 31, 2026.

Mike	
Range	Diff.
26 & Below	-2000
27-29	-1500
30-32	-1000
33-34	-500
35 & Above	0

Strength	
<i>(Grams per Tex)</i>	
Range	Diff.
34.9 & Below	-1650
35.0 – 35.9	-1400
36.0 – 36.9	-1150
37.0 – 37.9	-800
38.0 – 38.9	0
39.0 – 39.9	0
40.0 & Above	0

Extraneous Matter	
Type - Level	Diff.
Prep - Level 1	-810
Prep - Level 2	-1095
Other - Level 1	-715
Other - Level 2	-1035
Plastic - Level 1	-4000
Plastic - Level 2	-4000

1/ Pima spot quotations for color-leaf-staple combinations not quoted will be included as sales of those qualities which are reported.