

DAILY DIRECT HOGS PLANT DELIVERED as of 1:30 PM

Negotiated Barrow and Gilt:	Carcass Base Price		Live Price	
<u>NATIONAL - AMS 2675/LM_HG203:</u>				
Range:	\$89.50	\$91.00	\$63.25	\$74.00
Weighted Average:	\$90.17		\$70.05	
Change from Prior Day:	(-\$0.41)		(-\$0.34)	
Head Count:	1,609		2,073	
<u>IOWA/MINNESOTA - AMS 2675/LM_HG206:</u>				
Weighted Average:	*		*	
Change from Prior Day:	*		*	
<u>WESTERN CORNBELT - AMS 2675/LM_HG212:</u>				
Weighted Average:	*		*	
Change from Prior Day:	*		*	
<u>EASTERN CORNBELT - AMS 2675/LM_HG210:</u>				
Weighted Average:	*		\$70.37	
Change from Prior Day:	*		(-\$2.19)	

*Price not reported due to confidentiality.

NATIONAL DAILY PORK REPORT FOB PLANT - AMS 2498/LM_PK602:

Carcass Cutout Values	95.58	Change:	(-0.67)
Primal Loin	88.70		(-0.13)
Primal Butt	113.18		(-2.73)
Primal Picnic	76.62		(-0.32)
Primal Rib	167.31		3.84
Primal Ham	72.43		(-0.62)
Primal Belly	147.84		(-3.28)
Total Loads	229.57		
Pork Cuts	206.04	Lds	
Trim/Process Pork	23.53	Lds	

DAILY HOG SLAUGHTER UNDER FIS - AMS 3208/SJ_LS710

Today (est)	491,000
Week Ago (est)	497,000
Year Ago (act)	485,627
Week to Date (est)	1,477,000
Same Period Last Week (est)	1,484,000
Same Period Last Year (act)	1,433,427

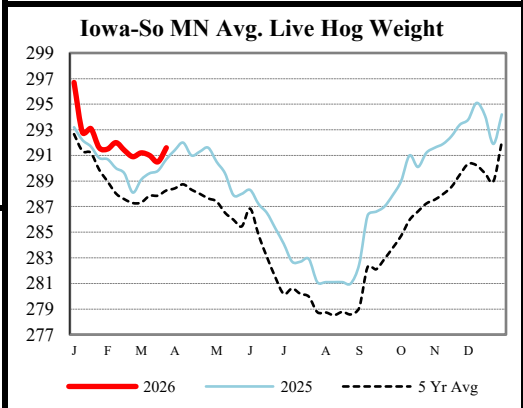
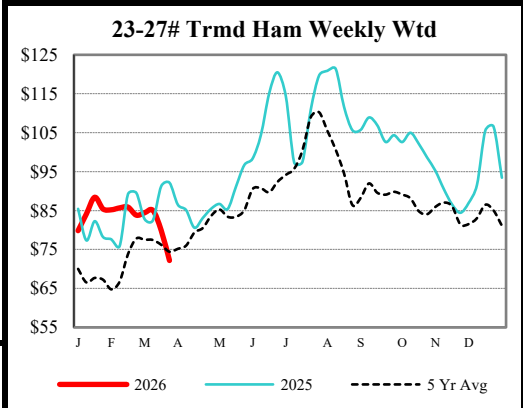
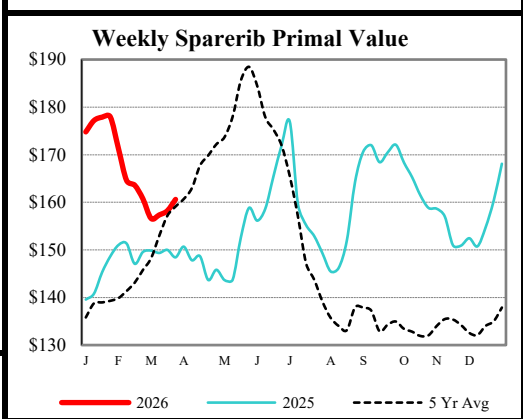
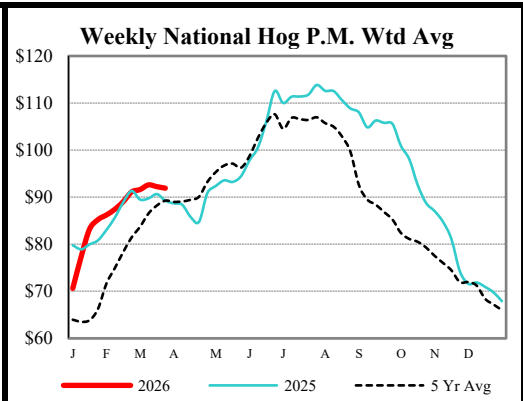
National Daily Direct Hog Prior Day Report - Slaughtered Swine - AMS 2511/LM_HG201

Producer Sold:	NEG	OMF	SPMF	OPA	Total
Head Count	6,278	28,291	131,580	79,652	245,851
Carcass Base Price	91.76	86.50	88.90	87.36	88.20
Average Net Price	93.06	89.47	90.21	89.46	89.93

Negotiated Formula included in total *Price not reported due to confidentiality.

IOWA-SOUTHERN MINNESOTA WEEKLY AVERAGE WEIGHT - AMS 2840/NW_LS720

For Week Ending Sat,	Head	Average
Mar 28, 2026	Ending Count	Weight
	3/28/2026	786,000 291.6
Week Ago:	3/21/2026	778,000 290.5
Year Ago:	3/29/2025	782,000 291.4



USDA Livestock, Poultry & Grain Market News
Des Moines, Iowa | PH 515-284-4460
Email: Desm.LPGMN@usda.gov
<https://mymarketnews.ams.usda.gov/viewReport/2872>
[USDA AMS Livestock, Poultry & Grain Market News](https://www.usda.gov/ams)